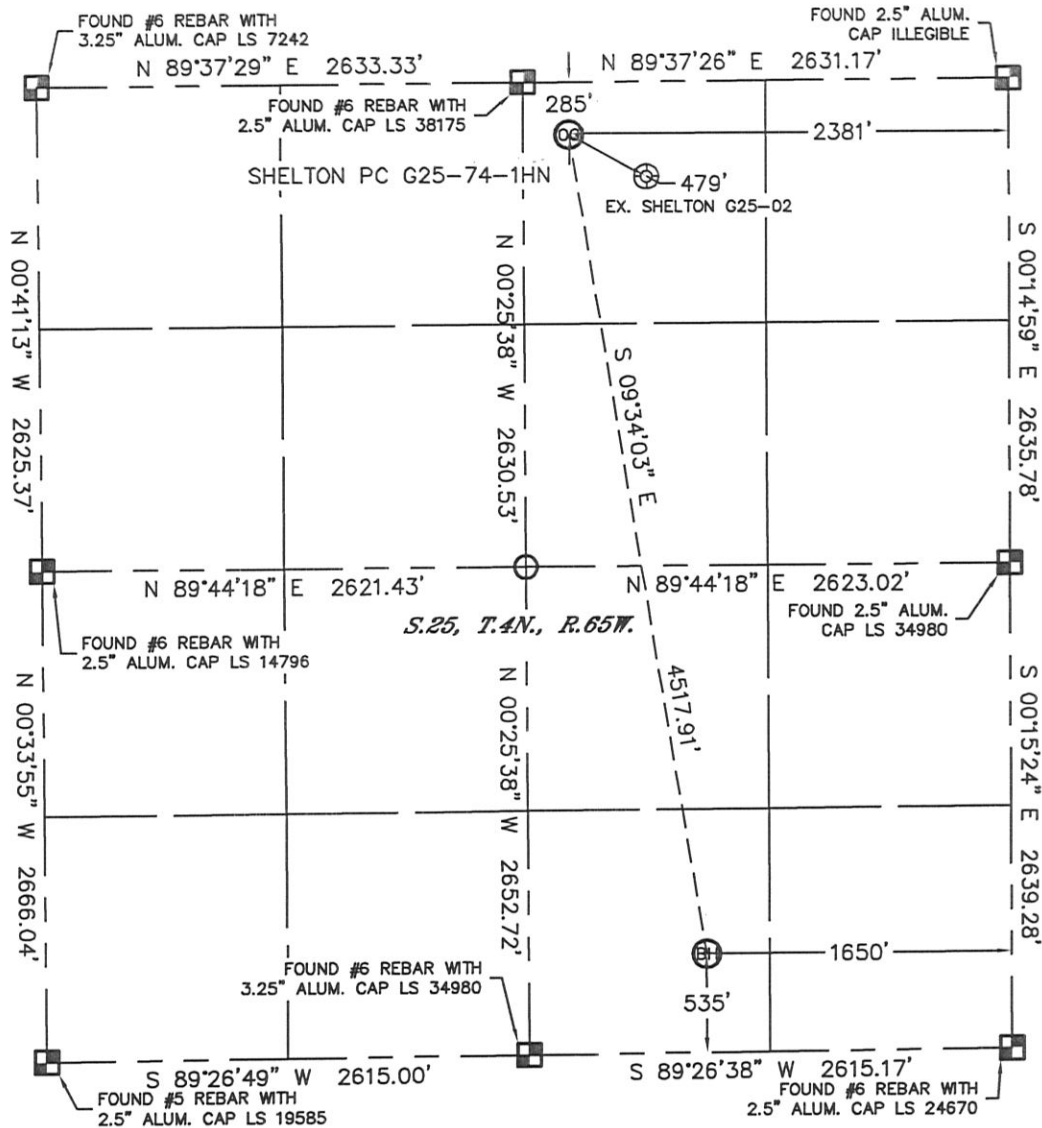


WELL LOCATION CERTIFICATE

THIS MAP DOES NOT REPRESENT A BOUNDARY SURVEY

SECTION: 25
TOWNSHIP: 4N
RANGE: 65W



In accordance with a request from Ryan Hawkins with Noble Energy Inc. Lat40°, Inc. has determined the surface location of the SHELTON PC G25-74-1HN to be 285' from the NORTH line and 2381' from the EAST line and the bottom hole to be 535' from the SOUTH line and 1650' from the EAST line as measured at right angles from the section lines of Section 25, Township 4 North, Range 65 West of the Sixth Principal Meridian, County of Weld, State of Colorado.

I hereby state that this Well Location Certificate was prepared by me, or under my direct supervision, that the fieldwork was completed on 11/4/11, for and on behalf of Noble Energy Inc. That this is not a Land Survey Plat or an Improvement Survey Plat, and that it is not to be relied upon for establishment of fence, building, or other future Improvement lines.

NOTE:

- 1) Bearings shown are Grid Bearings of the Colorado State Plane Coordinate System, North Zone, North American Datum 1983/2007. The lineal dimensions as contained herein are based upon the "U.S. Survey Foot."
- 2) Ground elevations are based on an observed GPS elevation (NAVD 1988 DATUM).
- 3) NEAREST EXISTING WELL: SHELTON G25-02, 479'
- 4) IMPROVEMENTS: See LOCATION DRAWING for all visible Improvements within 400' of disturbed area.
- 5) SURFACE USE: CROP FIELD
- 6) INSTRUMENT OPERATOR: ADAM KELLY

NOTE

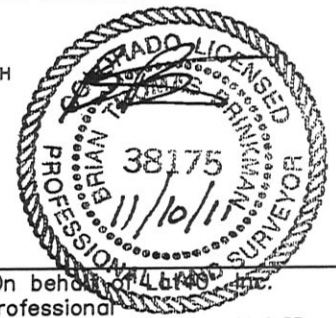
According to Colorado law, you must commence any legal action based upon any defect in this W.L.C. within three years after you discover such defect. In no event, may any action based upon any defect in this survey be commenced more than ten years after the date of the certificate shown hereon. (13-80-105 C.R.S.)

LEGEND

- = ALIQUOT MONUMENT AS DESCRIBED
- = CALCULATED POSITION

SURFACE LOCATION
LATITUDE: 40.28968°N
LONGITUDE: 104.61079°W
PDOP: 2.5
ELEV: 4795'
1/4, 1/4: NW1/4NE1/4
NEAREST PROPERTY LINE: 285' NORTH

BOTTOM HOLE
LATITUDE: 40.27744°N
LONGITUDE: 104.60825°W

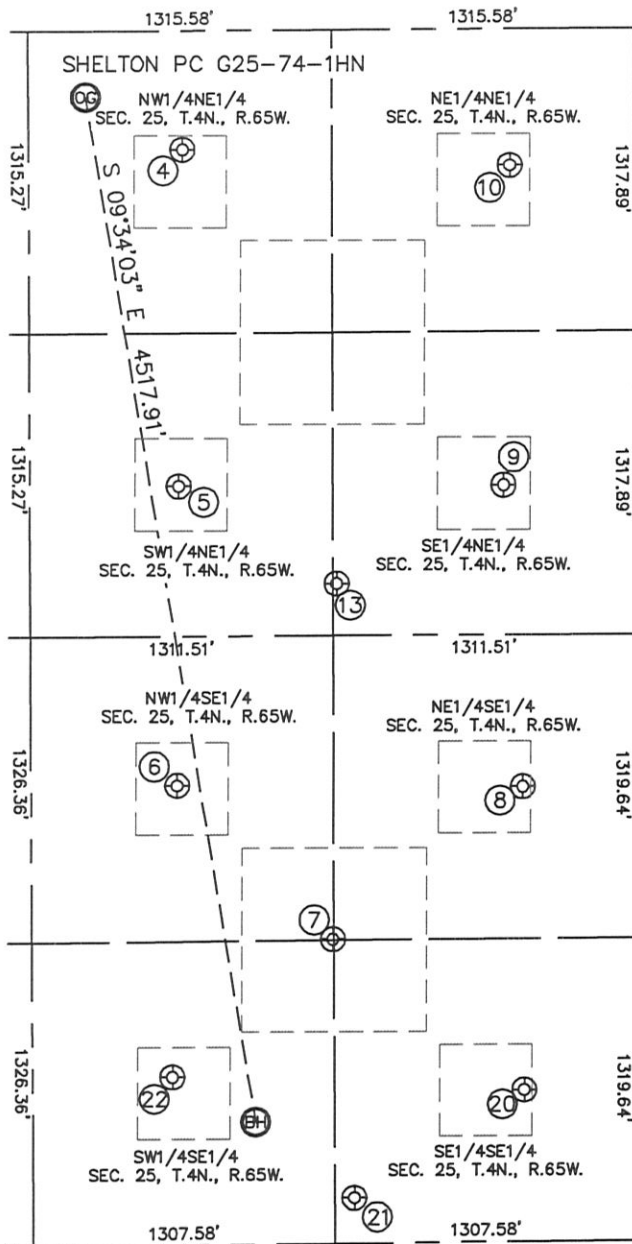


Brian T. Brinkman—On behalf of Lat40°, Inc.
Colorado Licensed Professional
Land Surveyor No. 38175
PROJECT#: 2010153

SITE SKETCH

SHELTON PC G25-74-1HN

SECTION: 25
TOWNSHIP: 4N
RANGE: 65W



④

SHELTON G25-02
NW1/4NE1/4
517' FNL
1962' FEL
LAT-40.28904°N
LONG-104.60929°W
PDOP: 2.2
ELEV: 4804

⑤

PLUSS G25-07
SW1/4NE1/4
1979' FNL
1980' FEL
LAT-40.28503°N
LONG-104.60938°W
PDOP: 3.2
ELEV: 4812

⑥

OCOMA G25-10
NW1/4SE1/4
2002' FSL
1988' FEL
LAT-40.28146°N
LONG-104.60944°W
PDOP: 2.1
ELEV: 4810

⑦

OCOMA G25-23
NW1/4SE1/4
1328' FSL
1314' FEL
LAT-40.27961°N
LONG-104.60703°W
PDOP: 2.0
ELEV: 4822

⑧

OCOMA G25-9
NE1/4SE1/4
1981' FSL
490' FEL
LAT-40.28140°N
LONG-104.60407°W
PDOP: 3.0
ELEV: 4840

⑨

PLUSS G25-8
SE1/4NE1/4
1984' FNL
571' FEL
LAT-40.28500°N
LONG-104.60433°W
PDOP: 1.9
ELEV: 4825

⑩

PLUSS 25-1
NE1/4NE1/4
594' FNL
543' FEL
LAT-40.28882°N
LONG-104.60421°W
PDOP: 1.5
ELEV: 4827

⑬

SHELTON G25-22
SE1/4NE1/4
2406' FNL
1294' FEL
LAT-40.28385°N
LONG-104.60694°W
PDOP: 3.5
ELEV: 4825'

⑳

OCOMA G25-16
SE1/4SE1/4
661' FSL
487' FEL
LAT-40.27778°N
LONG-104.60408°W
PDOP: 1.4
ELEV: 4843'

㉑

SHELTON G36-27
SE1/4SE1/4
200' FSL
1224' FEL
LAT-40.27652°N
LONG-104.60673°W
PDOP: 2.0
ELEV: 4830'

㉒

OCOMA G25-15
SW1/4SE1/4
735' FSL
2011' FEL
LAT-40.27799°N
LONG-104.60954°W
PDOP: 1.8
ELEV: 4821'

