

**HALLIBURTON**

---

**WILLIAMS PRODUCTION RMT INC - EBUS**

---

**GM 423-23  
GRAND VALLEY  
Garfield County , Colorado**

**Cement Surface Casing**

**22-Sep-2011**

**Post Job Report**

*The Road to Excellence Starts with Safety*

Sold To #: 300721		Ship To #: 2879086		Quote #:		Sales Order #: 8478416	
Customer: WILLIAMS PRODUCTION RMT INC - EBUS				Customer Rep: Klatt, Brian			
Well Name: GM		Well #: 423-23		API/UWI #: 05-045-20476			
Field: GRAND VALLEY		City (SAP): RIFLE		County/Parish: Garfield		State: Colorado	
Lat: N 39.506 deg. OR N 39 deg. 30 min. 22.54 secs.				Long: W 108.083 deg. OR W -109 deg. 55 min. 0.919 secs.			
Contractor: NABORS		Rig/Platform Name/Num: NABORS 576					
Job Purpose: Cement Surface Casing							
Well Type: Development Well				Job Type: Cement Surface Casing			
Sales Person: KOHL, KYLE		Srv Supervisor: SMITH, DUSTIN		MBU ID Emp #: 418015			
<b>Job Personnel</b>							
HES Emp Name	Exp Hrs	Emp #	HES Emp Name	Exp Hrs	Emp #	HES Emp Name	Exp Hrs
HAYES, JESSE Doug	5.5	403601	KUKUS, CRAIG A	5.5	369124	SMITH, DUSTIN Michael	5.5
WYCKOFF, RYAN Scott	5.5	476117					
<b>Equipment</b>							
HES Unit #	Distance-1 way	HES Unit #	Distance-1 way	HES Unit #	Distance-1 way	HES Unit #	Distance-1 way
10867531	60 mile	10872429	60 mile	10989685	60 mile	11259883	60 mile
11360883	60 mile						
<b>Job Hours</b>							
Date	On Location Hours	Operating Hours	Date	On Location Hours	Operating Hours	Date	On Location Hours
09/22/11	5.5	2					
TOTAL		Total is the sum of each column separately					
<b>Job</b>				<b>Job Times</b>			
Formation Name				Date	Time	Time Zone	
Formation Depth (MD)	Top	Bottom		Called Out	22 - Sep - 2011	01:00	MST
Form Type	BHST			On Location	22 - Sep - 2011	04:30	MST
Job depth MD	870. ft		Job Depth TVD	870. ft	Job Started	22 - Sep - 2011	07:53
Water Depth	Wk Ht Above Floor			5. ft	Job Completed	22 - Sep - 2011	08:37
Perforation Depth (MD)	From	To		Departed Loc	22 - Sep - 2011	10:00	MST
<b>Well Data</b>							
Description	New / Used	Max pressure psig	Size in	ID in	Weight lbm/ft	Thread	Grade
SURFACE CASING	New		9.625	9.001	32.3		H-40
<b>Sales/Rental/3<sup>rd</sup> Party (HES)</b>							
Description				Qty	Qty uom	Depth	Supplier
PLUG,CMTG,TOP,9 5/8,HWE,8.16 MIN/9.06 MA				1	EA		
<b>Tools and Accessories</b>							
Type	Size	Qty	Make	Depth	Type	Size	Qty
Guide Shoe					Packer		
Float Shoe					Bridge Plug		
Float Collar					Retainer		
Insert Float							
Stage Tool							
<b>Miscellaneous Materials</b>							
Gelling Agt		Conc		Surfactant		Conc	
Treatment Fld		Conc		Inhibitor		Conc	
				Acid Type		Qty	
				Sand Type		Size	
<b>Fluid Data</b>							
Stage/Plug #: 1							

Fluid #	Stage Type	Fluid Name	Qty	Qty uom	Mixing Density lbm/gal	Yield ft <sup>3</sup> /sk	Mix Fluid Gal/sk	Rate bbl/min	Total Mix Fluid Gal/sk
1	Water Spacer		20.00	bbl	8.34	.0	.0	4.0	
2	Tail Cement	VERSACEM (TM) SYSTEM (452010)	250.0	sacks	12.8	2.11	11.76	8.0	11.76
		11.76 Gal							
		FRESH WATER							
3	Displacement Fluid		63.8	bbl	8.34	.0	.0	10.0	
<b>Calculated Values</b>		<b>Pressures</b>		<b>Volumes</b>					
Displacement	63.8	Shut In: Instant		Lost Returns	0	Cement Slurry	93.9	Pad	
Top Of Cement	SURFACE	5 Min		Cement Returns	13	Actual Displacement	63.8	Treatment	
Frac Gradient		15 Min		Spacers	20	Load and Breakdown		Total Job	178
<b>Rates</b>									
Circulating		Mixing	8	Displacement	10	Avg. Job			9
Cement Left In Pipe	Amount	43.7 ft	Reason	Shoe Joint					
Frac Ring # 1 @	ID	Frac ring # 2 @	ID	Frac Ring # 3 @	ID	Frac Ring # 4 @	ID		
The Information Stated Herein Is Correct				Customer Representative Signature					

*The Road to Excellence Starts with Safety*

Sold To #: 300721	Ship To #: 2879086	Quote #:	Sales Order #: 8478416
Customer: WILLIAMS PRODUCTION RMT INC - EBUS	Customer Rep: Klatt, Brian		
Well Name: GM	Well #: 423-23	API/UWI #: 05-045-20476	
Field: GRAND VALLEY	City (SAP): RIFLE	County/Parish: Garfield	State: Colorado
Legal Description:			
Lat: N 39.506 deg. OR N 39 deg. 30 min. 22.54 secs.		Long: W 108.083 deg. OR W -109 deg. 55 min. 0.919 secs.	
Contractor: NABORS	Rig/Platform Name/Num: NABORS 576		
Job Purpose: Cement Surface Casing	Ticket Amount:		
Well Type: Development Well	Job Type: Cement Surface Casing		
Sales Person: KOHL, KYLE	Srvc Supervisor: SMITH, DUSTIN	MBU ID Emp #: 418015	

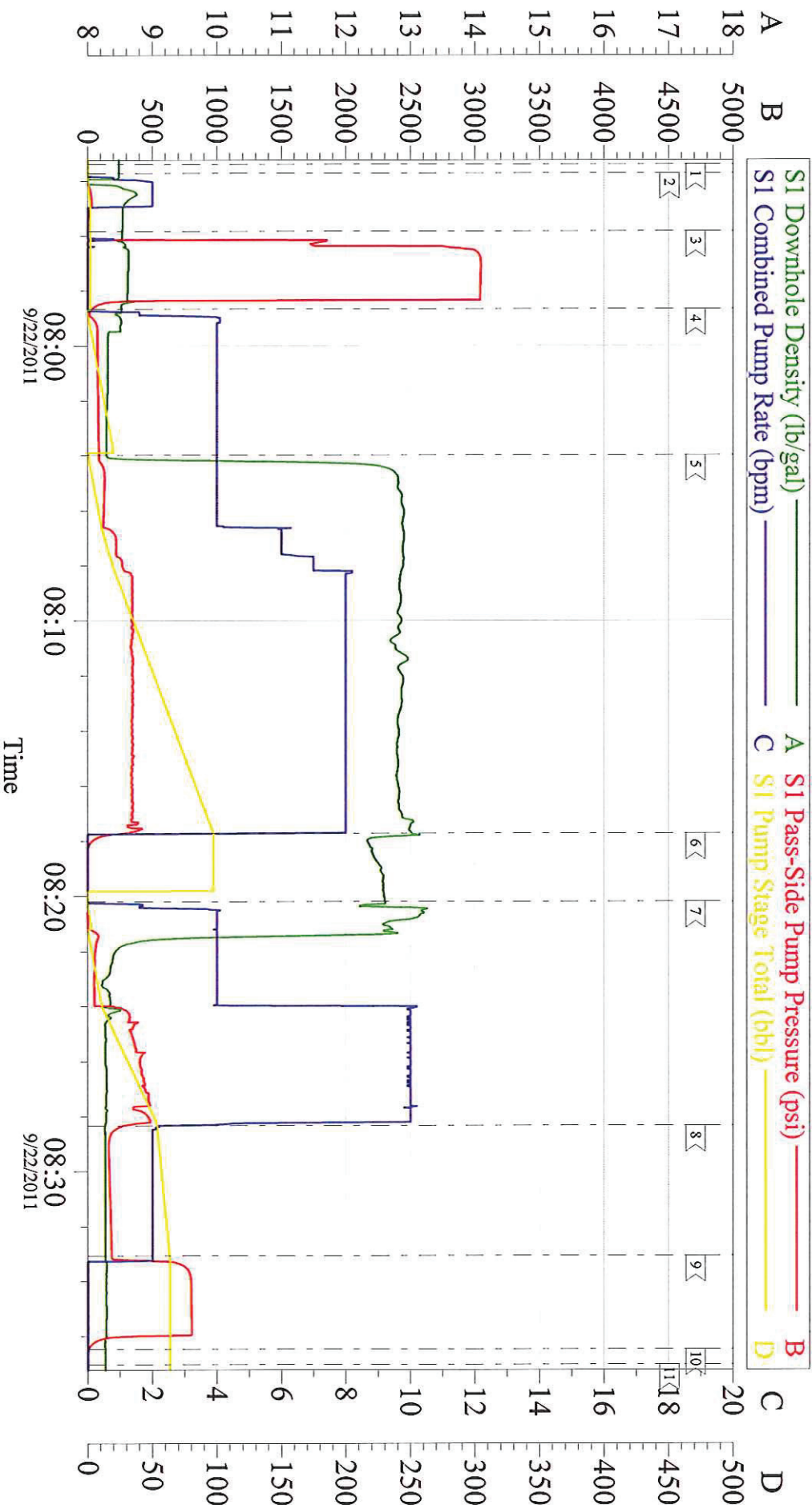
Activity Description	Date/Time	Cht #	Rate bbl/min	Volume bbl		Pressure psig		Comments
				Stage	Total	Tubing	Casing	
Call Out	09/22/2011 01:00							ELITE # 7
Depart Yard Safety Meeting	09/22/2011 03:00							ALL HES EMPLOYEES
Arrive At Loc	09/22/2011 04:30							ARRIVED ON LOCATION 2 HOURS EARLY DIDNT START CHARGING TIME UNTIL REQUESTED ON LOCATION TIME RIG GETTING CASERS RIGGED UP
Assessment Of Location Safety Meeting	09/22/2011 05:00							ALL HES EMPLOYEES
Pre-Rig Up Safety Meeting	09/22/2011 06:30							ALL HES EMPLOYEES
Rig-Up Equipment	09/22/2011 06:40							1 F-450 PICKUP 1 HT-400 PUMP TRUCK 1 660 BULK TRUCK
Pre-Job Safety Meeting	09/22/2011 07:30							ALL HES EMPLOYEES AND RIG CREW
Rig-Up Completed	09/22/2011 07:50							RIG CIRCULATED FOR 1 HOUR PRIOR TO JOB
Start Job	09/22/2011 07:53							TD: 870 TP: 855 SJ: 43.7 MUD WT: 9.7 PPG 9 5/8 32.3# CSG TOP JOINT OF CSG 36# 13 1/2 OH
Test Lines	09/22/2011 07:55					3000.0		PRESSURE TEST OK
Pump Spacer	09/22/2011 07:58		4	20	20		102.0	FRESH WATER
Pump Tail Cement	09/22/2011 08:03		8	93.9	93.9		361.0	250 SKS 12.8 PPG 2.11 YIELD 11.75 GAL/SK

## Cementing Job Log

Activity Description	Date/Time	Cht #	Rate bbl/min	Volume bbl		Pressure psig		Comments
				Stage	Total	Tubing	Casing	
Shutdown	09/22/2011 08:17							
Drop Plug	09/22/2011 08:17							PLUG AWAY NO PROBLEMS WASHED UP ON TOP OF PLUG
Pump Displacement	09/22/2011 08:20		10	63.8	63.8		488.0	FRESH WATER
Slow Rate	09/22/2011 08:28		2	53	53		189.0	SLOW RATE TO BUMP PLUG
Bump Plug	09/22/2011 08:33		2	63.8	63.8		818.0	BUMPED PLUG AT 200 PSI BUMPED PLUG UP TO 818 PSI
Check Floats	09/22/2011 08:36							FLOATS HELD 1/2 BBL BACK INTO DISPLACEMENT TANK
End Job	09/22/2011 08:37							GOOD CIRCULATION THROUGHOUT JOB NO PIPE MOVEMENT DURING JOB 13 BBLS CEMENT TO SURFACE
Pre-Rig Down Safety Meeting	09/22/2011 08:45							ALL HES EMPLOYEES
Rig-Down Equipment	09/22/2011 09:00							
Pre-Convoy Safety Meeting	09/22/2011 09:30							ALL HES EMPLOYEES
Crew Leave Location	09/22/2011 10:00							THANK YOU FOR USING HALLIBURTON CEMENT DUSTIN SMITH AND CREW

# WILLIAMS PRODUCTION

## GM 423-23 9 5/8 SURFACE



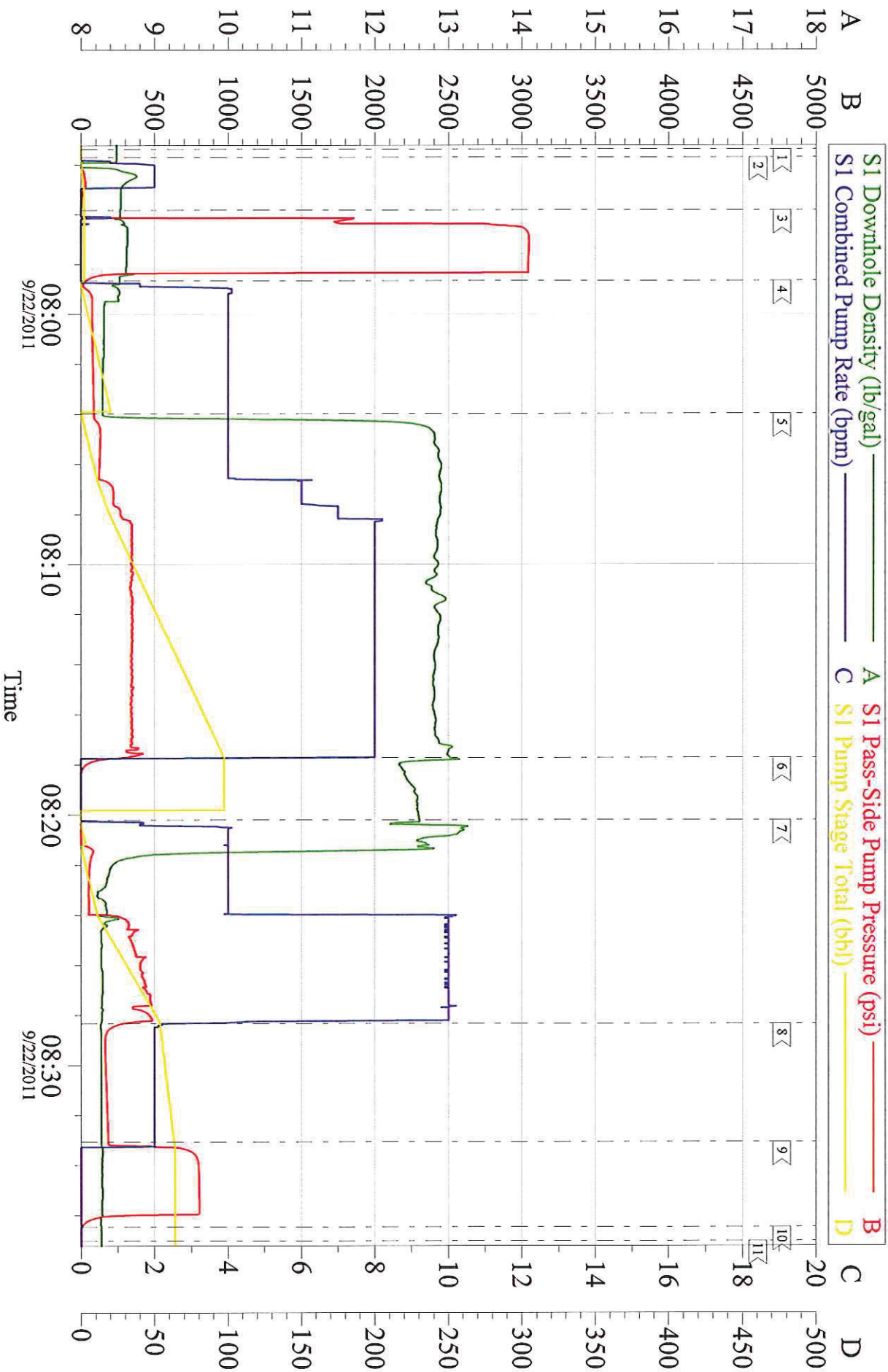
Customer: WILLIAMS PRODUCTION  
 Well Description: GM 423-23  
 Company Rep: BRYAN KLATT

Job Date: 22-Sep-2011  
 Job Type: 9 5/8 SURFACE  
 Cement Supervisor: DUSTIN SMITH

Sales Order #: 8478416  
 ADC Used: YES  
 Elite #: 7 RYAN WYCKOFF

# WILLIAMS PRODUCTION

## GM 423-23 9 5/8 SURFACE



Customer: WILLIAMS PRODUCTION  
Well Description: GM 423-23  
Company Rep: BRYAN KLATT

Job Date: 22-Sep-2011  
Job Type: 9 5/8 SURFACE  
Cement Supervisor: DUSTIN SMITH

Sales Order #: 8478416  
ADC Used: YES  
Elite #: 7 RYAN WYCKOFF

OptiCem v6.4.10  
22-Sep-11 08:50