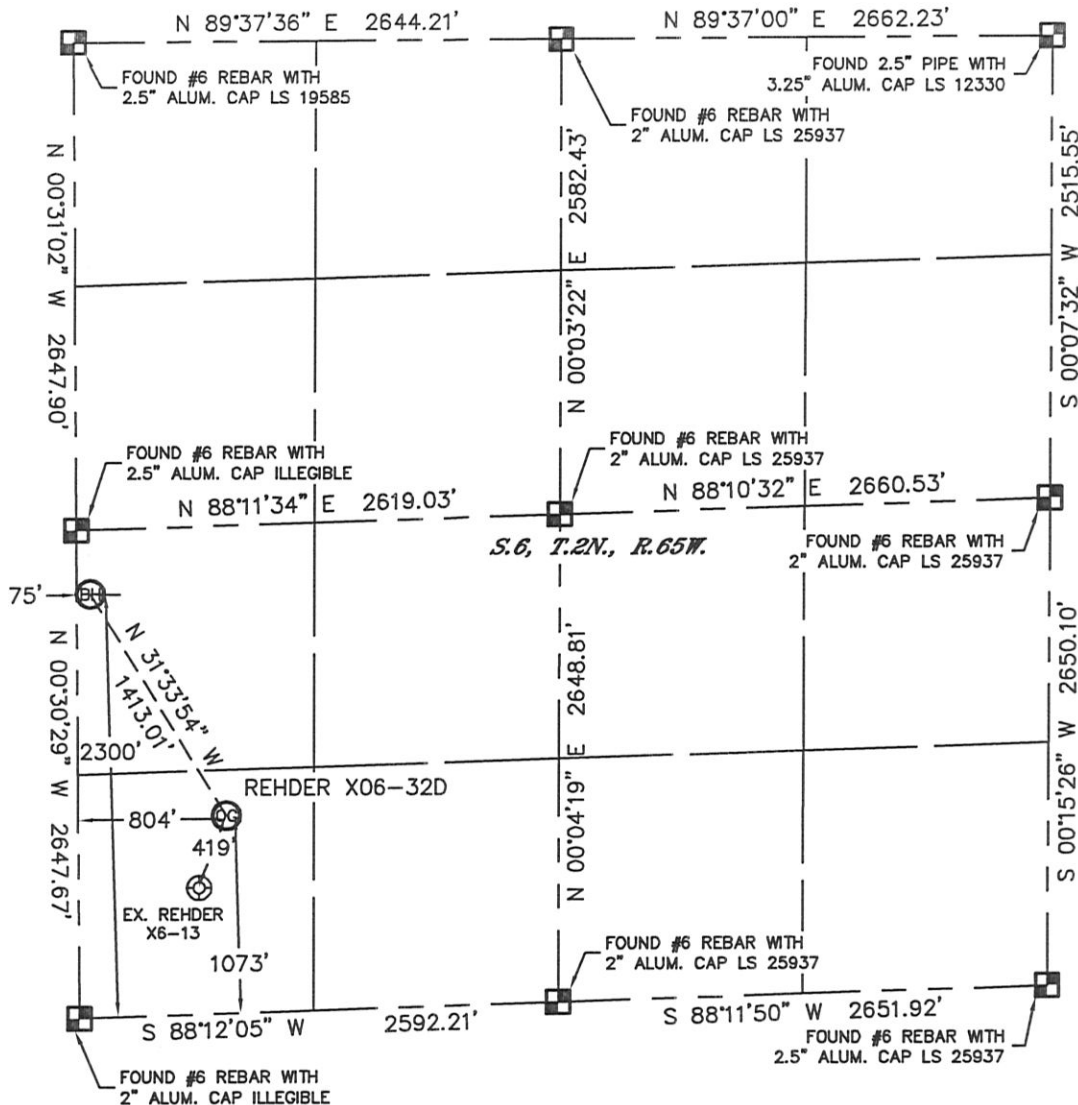


Lat40°, Inc. 1635 Foxtrail Drive, Suite 325 Loveland, CO 970-776-3321

WELL LOCATION CERTIFICATE

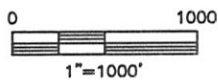
THIS MAP DOES NOT REPRESENT A BOUNDARY SURVEY

SECTION: 6
TOWNSHIP: 2N
RANGE: 65W



In accordance with a request from Ryan Hawkins with Noble Energy Inc. Lat40°, Inc. has determined the surface location of the REHDER X06-32D to be 1073' from the SOUTH line and 804' from the WEST line and the bottom hole to be 2300' from the SOUTH line and 75' from the WEST line as measured at right angles from the section lines of Section 6, Township 2 North, Range 65 West of the Sixth Principal Meridian, County of Weld, State of Colorado.

I hereby state that this Well Location Certificate was prepared by me, or under my direct supervision, that the fieldwork was completed on 12/9/11, for and on behalf of Noble Energy Inc. That this is not a Land Survey Plat or an Improvement Survey Plat, and that it is not to be relied upon for establishment of fence, building, or other future Improvement lines.



NOTE:

- 1) Bearings shown are Grid Bearings of the Colorado State Plane Coordinate System, North Zone, North American Datum 1983/2007. The lineal dimensions as contained herein are based upon the "U.S. Survey Foot."
- 2) Ground elevations are based on an observed GPS elevation (NAVD 1988 DATUM).
- 3) NEAREST EXISTING WELL: REHDER X6-13, 419'
- 4) IMPROVEMENTS: See LOCATION DRAWING for all visible Improvements within 400' of disturbed area.
- 5) SURFACE USE: RANGELAND
- 6) INSTRUMENT OPERATOR: WYATT HALL

SURFACE LOCATION
LATITUDE: 40.16317°N
LONGITUDE: 104.71297°W
PDOP: 1.1
ELEV: 4978'
1/4, 1/4: SW1/4SW1/4
NEAREST PROPERTY LINE: 250' N

BOTTOM HOLE
LATITUDE: 40.16649°N
LONGITUDE: 104.71558°W

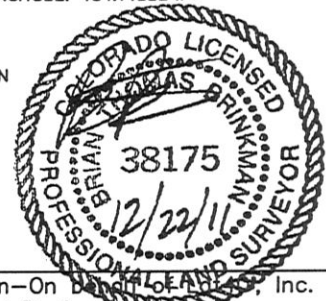
NOTE

According to Colorado law, you must commence any legal action based upon any defect in this W.L.C. within three years after you discover such defect. In no event, may any action based upon any defect in this survey be commenced more than ten years after the date of the certificate shown hereon. (13-80-105 C.R.S.)

LEGEND

- = ALIQUOT MONUMENT AS DESCRIBED
○ = CALCULATED POSITION

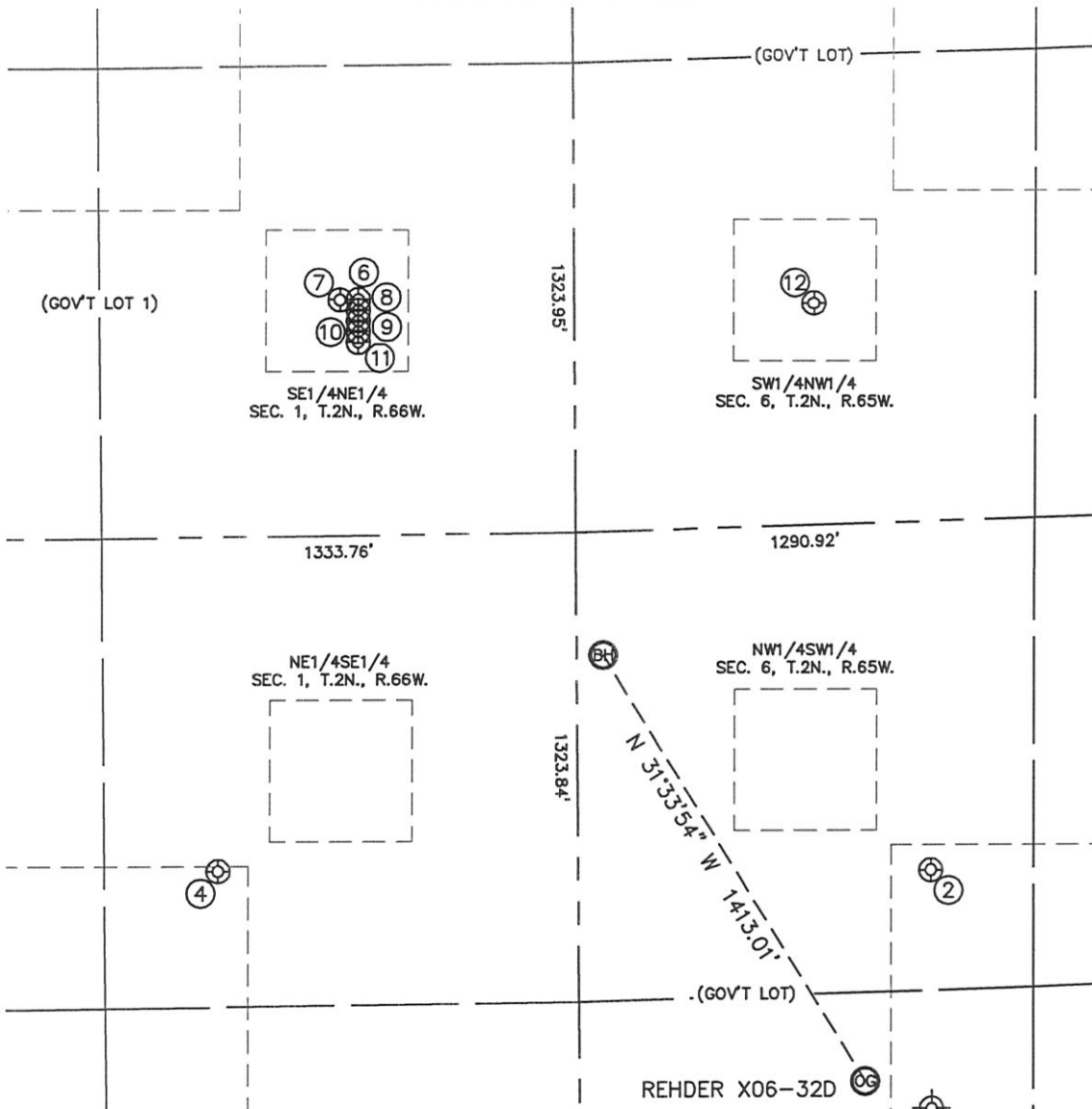
Brian T. Brinkman-On behalf of Lat40°, Inc.
Colorado Licensed Professional Land Surveyor No. 38175
DATE: 12/22/11
PROJECT#: 2011343



SITE SKETCH

REHDER X06-32D

SECTION: 6
TOWNSHIP: 2N
RANGE: 65W



②
REHDER X6-03D
NW1/4SW1/4 (GOV'T LOT)
1662' FSL
993' FWL
LAT-40.16480°N
LONG-104.71229°W
PDOP: 1.5
ELEV: 4978'

④
UPRR PAN AM
"D" TRUE 1
NE1/4SE1/4
1707' FSL
1013' FEL
LAT-40.16485°N
LONG-104.71947°W
PDOP: 1.5
ELEV: 5002'

⑥
DOLPH 26-1
SE1/4NE1/4
(GOV'T LOT 1)
1982' FNL
609' FEL
LAT-40.16926°N
LONG-104.71802°W
PDOP: 3.1
ELEV: 5021'

⑦
DOLPH UPRR 42-1
SE1/4NE1/4
(GOV'T LOT 1)
1982' FNL
660' FEL
LAT-40.16926°N
LONG-104.71821°W
PDOP: 4.4
ELEV: 5021'

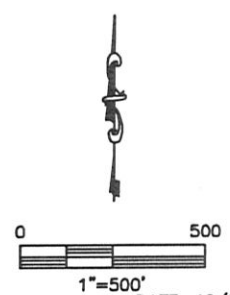
⑧
DOLPH 1-1
SE1/4NE1/4
(GOV'T LOT 1)
2012' FNL
609' FEL
LAT-40.16918°N
LONG-104.71802°W
PDOP: 2.1
ELEV: 5022'

⑨
DOLPH 41-1
SE1/4NE1/4
(GOV'T LOT 1)
2042' FNL
609' FEL
LAT-40.16910°N
LONG-104.71802°W
PDOP: 2.1
ELEV: 5021'

⑩
DOLPH 24-1
SE1/4NE1/4
(GOV'T LOT 1)
2072' FNL
609' FEL
LAT-40.16901°N
LONG-104.71802°W
PDOP: 2.1
ELEV: 5021'

⑪
DOLPH 9-1
SE1/4NE1/4
(GOV'T LOT 1)
2102' FNL
610' FEL
LAT-40.16893°N
LONG-104.71803°W
PDOP: 2.9
ELEV: 5021'

⑫
LEMONS X6-5
SW1/4NW1/4
2006' FNL
675' FWL
LAT-40.16920°N
LONG-104.71343°W
PDOP: 2.6
ELEV: 4997'



DATE: 12/22/11
PROJECT#: 2011343