

1625 Broadway  
Suite 2000  
Denver, CO 80202  
  
Tel: 303.228.4000  
Fax: 303.228.4280  
www.nobleenergyinc.com



April 9, 2012

Colorado Oil and Gas Conservation Commission  
The Chancery Building  
1120 Lincoln Street, Suite 801  
Denver, CO 80203  
Attn: Mr. Thom Kerr, Acting Director

RE: Rehder X06-20D  
Codell/Niobrara/J Sand New Drill  
Township 2 North, Range 65 West, 6th P.M.  
Section 6: SW/4SW/4: 1072' FSL & 849' FWL (Surface Location)  
Section 6: NW/4SW/4: 2500' FSL & 850' FWL (Bottom Hole Location)  
Weld County, Colorado

Mr. Kerr:

Noble Energy, Inc. ("NEI") is planning to drill the captioned boundary well in accordance with the provisions of COGCC Rule 318A.e.

NEI's proposed wellbore spacing unit consists of the S/2NW/4, N/2SW/4, Sec 6, T2N, R65W, creating a 160-acre wellbore spacing unit for the Codell/Niobrara formations and the W/2 of Section 6, T2N, R65W, creating a 320-acre wellbore spacing unit for the J Sand. NEI is the only owner within the proposed wellbore spacing unit, therefore NEI hereby attests that no notice letters are required under COGCC Rule 318A(l).e.(6).

Enclosed are copies of the following documents to assist you in your review and approval of NEI's proposed APD for the captioned well:

- Map & plat illustrating proposed wellbore spacing unit.

Thank you for your attention to the enclosed. NEI respectfully requests that the COGCC review the enclosed information and approve the Application for Permit to Drill the captioned well.

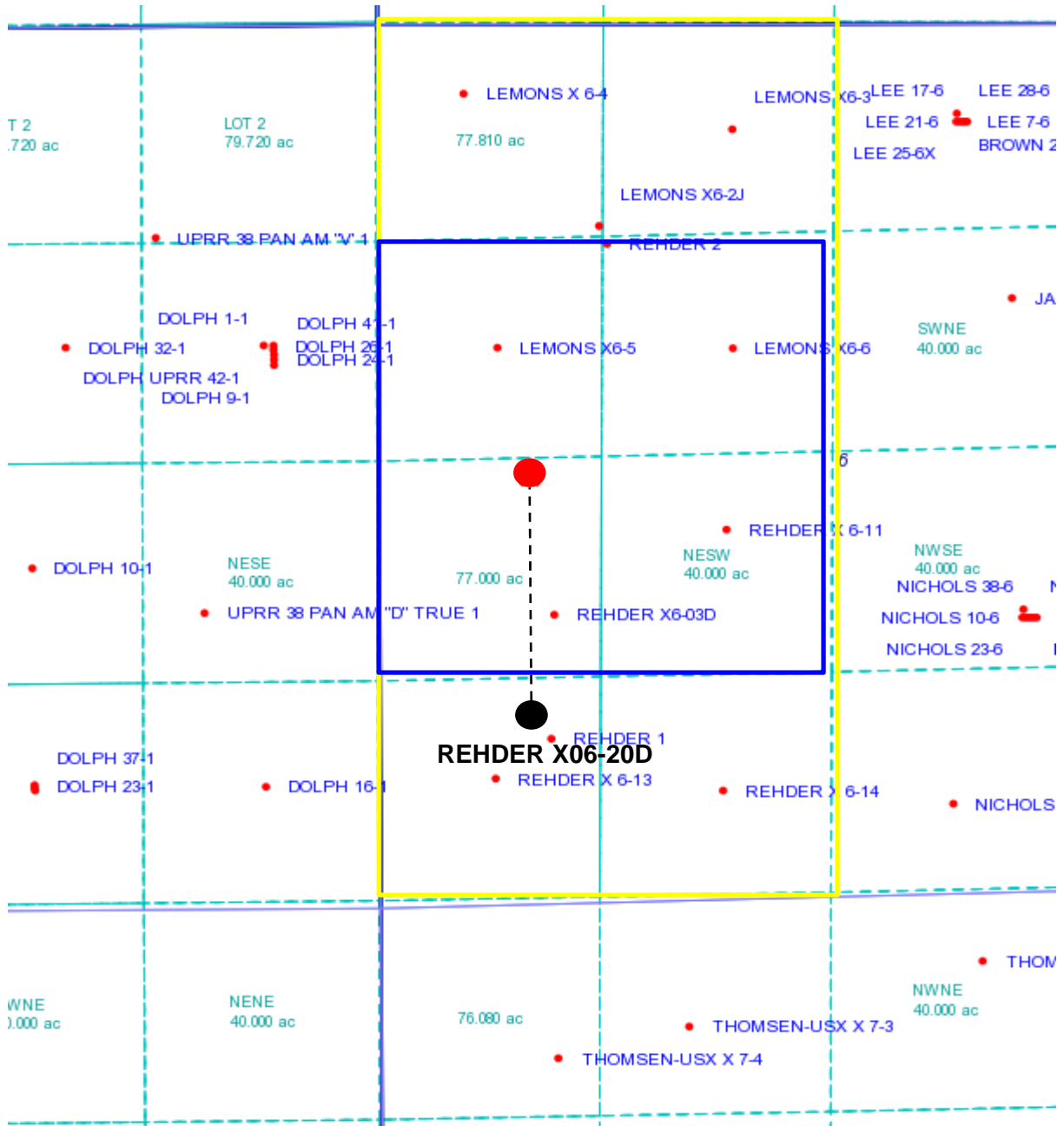
Sincerely,

Justin Garrett  
Regulatory Specialist  
Noble Energy Inc.

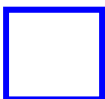
# REHDER X06-20D

Proposed Spacing Unit – Noble Energy, Inc

BHL: NW/4SW/4 Section 6, Township 2 North, Range 65 West



Legend



Proposed 160 acre C/N spacing unit



Proposed 320 acre J spacing unit

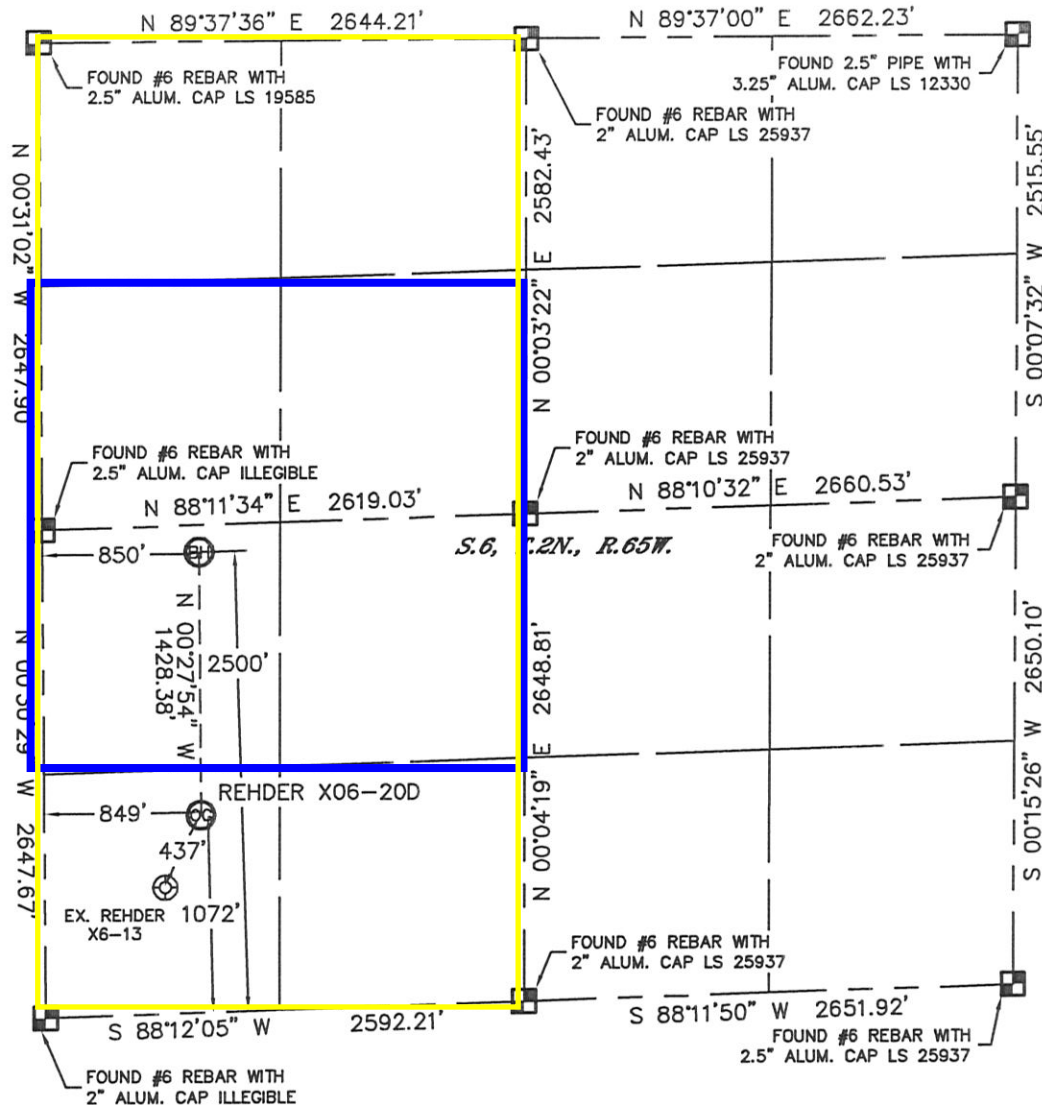


Bottom Hole Location

# WELL LOCATION CERTIFICATE

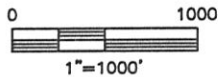
THIS MAP DOES NOT REPRESENT A BOUNDARY SURVEY

SECTION: 6  
TOWNSHIP: 2N  
RANGE: 65W



In accordance with a request from Ryan Hawkins with Noble Energy Inc. Lat40°, Inc. has determined the surface location of the REHDER X06-20D to be 1072' from the SOUTH line and 849' from the WEST line and the bottom hole to be 2500' from the SOUTH line and 850' from the WEST line as measured at right angles from the section lines of Section 6, Township 2 North, Range 65 West of the Sixth Principal Meridian, County of Weld, State of Colorado.

I hereby state that this Well Location Certificate was prepared by me, or under my direct supervision, that the fieldwork was completed on 12/9/11, for and on behalf of Noble Energy Inc. That this is not a Land Survey Plat or an Improvement Survey Plat, and that it is not to be relied upon for establishment of fence, building, or other future improvement lines.



## NOTE:

- 1) Bearings shown are Grid Bearings of the Colorado State Plane Coordinate System, North Zone, North American Datum 1983/2007. The lineal dimensions as contained herein are based upon the "U.S. Survey Foot."
- 2) Ground elevations are based on an observed GPS elevation (NAVD 1988 DATUM).
- 3) NEAREST EXISTING WELL: REHDER X6-13, 437'
- 4) IMPROVEMENTS: See LOCATION DRAWING for all visible improvements within 400' of disturbed area.
- 5) SURFACE USE: RANGELAND
- 6) INSTRUMENT OPERATOR: WYATT HALL

**SURFACE LOCATION**  
LATITUDE: 40.16317°N  
LONGITUDE: 104.71281°W  
PDOP: 1.3  
ELEV: 4977'  
1/4, 1/4: SW1/4SW1/4  
NEAREST PROPERTY LINE: 252' N

**BOTTOM HOLE**  
LATITUDE: 40.16709°N  
LONGITUDE: 104.71280°W

## NOTE

According to Colorado law, you must commence any legal action based upon any defect in this W.L.C. within three years after you discover such defect. In no event, may any action based upon any defect in this survey be commenced more than ten years after the date of the certificate shown hereon. (13-80-105 C.R.S.)

## LEGEND

- = ALIQUOT MONUMENT AS DESCRIBED
- = CALCULATED POSITION

Brian T. Brinkman—On Demand Land Survey, Inc.  
Colorado Licensed Professional Land Surveyor No. 38175  
DATE: 12/22/11  
PROJECT#: 2011343

