

Steil Surveying Services, LLC

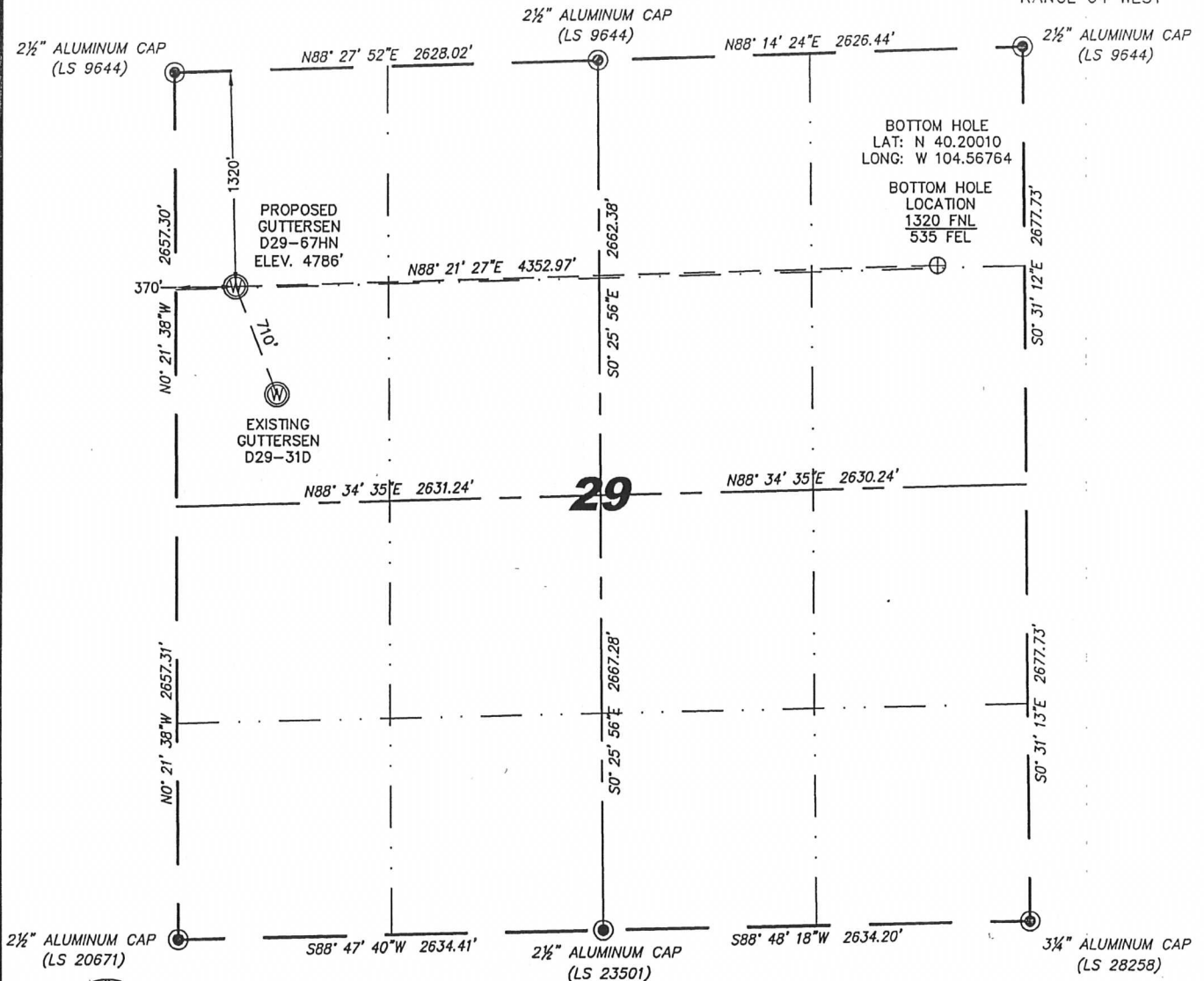
1102 West 19th Street P.O. BOX 2073

Cheyenne, Wyoming 82009

WELL LOCATION CERTIFICATE

THIS MAP DOES NOT REPRESENT A BOUNDARY SURVEY

SECTION 29
TOWNSHIP 3 NORTH
RANGE 64 WEST



IN ACCORDANCE WITH A REQUEST FROM BRIAN DEROSE - NOBLE ENERGY INC, STEIL SURVEYING SERVICES, LLC HAS DETERMINED THE LOCATION OF THE GUTTERSEN D29-67HN WELL TO BE 1320' FNL, 370' FNL, AS MEASURED AT NINETY (90) DEGREES FROM THE SECTION LINES, SECTION 29, TOWNSHIP 3 NORTH, RANGE 64 WEST, 6TH PRINCIPLE MERIDIAN, WELD COUNTY, COLORADO.

I HEREBY CERTIFY THAT THIS WELL LOCATION CERTIFICATE WAS PREPARED BY ME, OR UNDER MY DIRECT SUPERVISION, THAT THE FIELD WORK WAS COMPLETED ON 10/28/2011, FOR AND ON BEHALF OF NOBLE ENERGY INC, THAT IT IS NOT A LAND SURVEY PLAT OR AN IMPROVEMENT SURVEY PLAT, AND THAT IT IS NOT TO BE RELIED UPON FOR ESTABLISHMENT OF FENCE, BUILDING, OR OTHER FUTURE IMPROVEMENT LINES.

NOTES:

- 1) BASIS OF BEARINGS FOR THIS MAP ARE BASED UPON GPS OBSERVATIONS MADE ON 10/17/2011 BETWEEN MONUMENTS LOCATED AT THE SOUTHEAST SECTION CORNER AND THE NORTHEAST SECTION CORNER OF SAID SECTION AND WITH ALL BEARINGS SHOWN HEREON RELATIVE THERETO.
- 2) COORDINATES SHOWN ARE COLORADO STATE PLANE (NORTH ZONE) NAD 83.
- 3) ELEVATIONS ARE BASED UPON NGS OPUS SOLUTION NAVD 88 DATUM.
- 4) THE NEAREST EXISTING WELL IS: GUTTERSEN D29-31D, 710' SOUTHEAST.
- 5) SEE LOCATION DRAWING FOR ALL IMPROVEMENTS WITHIN VISIBLE IMPROVEMENTS LIMIT.
- 6) THE LOCATION FALLS IN PASTURE LAND.

LATITUDE & LONGITUDE (NAD 83 SURFACE HOLE):

LATITUDE: N 40.19988'
LONGITUDE: W 104.58323'
PDOP: 2.2
QUARTER-QUARTER: NW/4NW/4
NEAREST PROPERTY LINE: 370' TO THE WEST

LEGEND

- FOUND SURVEY MONUMENT PER MONUMENT RECORD - EXCEPTIONS NOTED.
- (C) CALCULATED DIMENSION

NOTICE: According to Colorado law you MUST commence any legal action based upon any defect in this W.L.C. within three years after you first discover such defect. In no event may any action based upon any defect in this W.L.C. be commenced more than ten years from this sold date of the certification shown hereon.

Jeffrey B. Jones
Professional Land Surveyor Registration No. 37920
State of Colorado

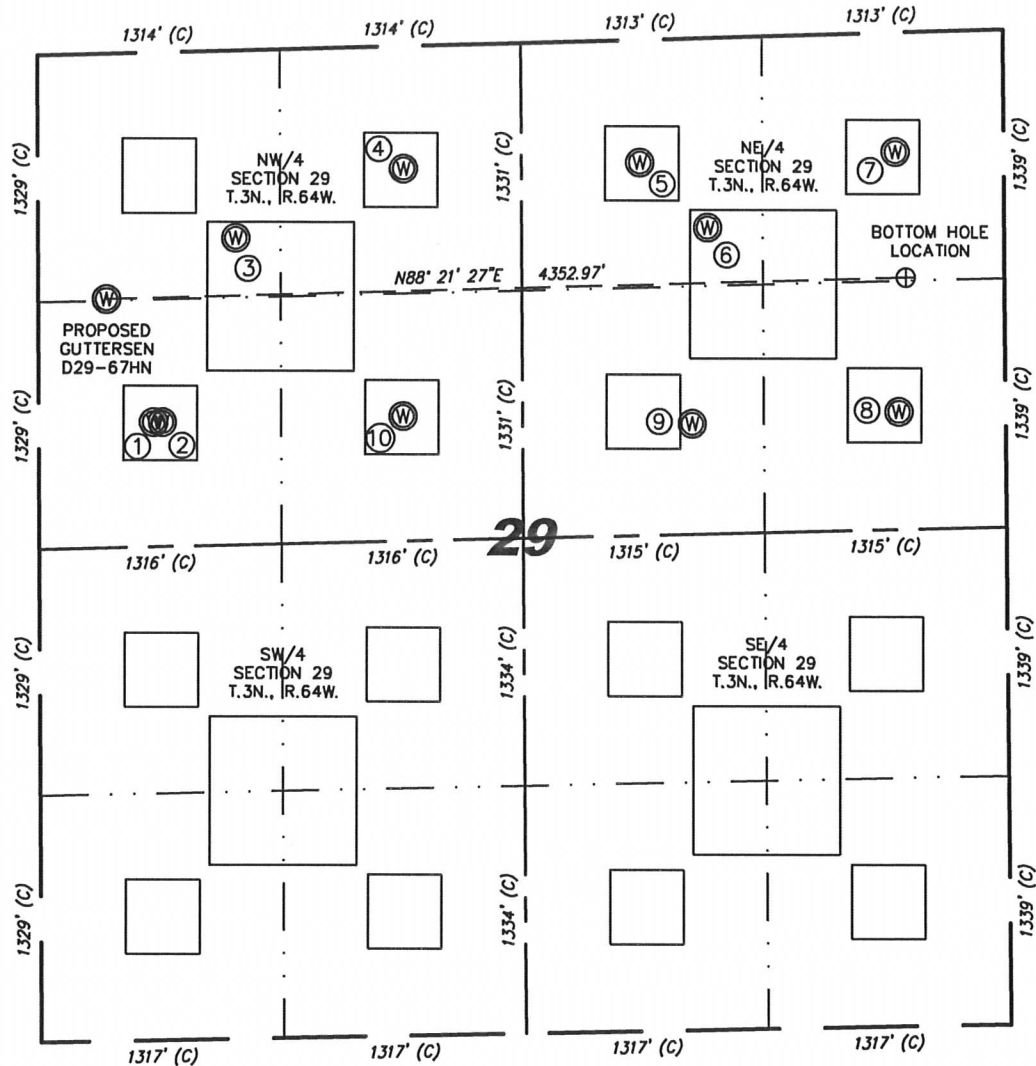
JOB #: 11086

Completed 12/08/2011



SKETCH — GUTTERSEN D29-67HN

SECTION 29
TOWNSHIP 3 NORTH
RANGE 64 WEST



| | | | | | | | |
|--|--|---|---|---|---|--|---|
| ① GUTTERSEN D29-31D SW/NW SEC. 29 1988' FNL 622' FWL EL 4784' N 40.19806 W 104.58233 PDOP 2.1 | ② KATE RED D29-5 SW/NW SEC. 29 1989' FNL 670' FWL EL 4783' N 40.19806 W 104.58216 PDOP 2.3 | ③ KATE RED D29-2J NW/NW SEC. 29 1008' FNL 1072' FWL EL 4778' N 40.20077 W 104.58071 PDOP 2.3 | ④ KATE RED D29-3 NE/NW SEC. 29 658' FNL 1986' FWL EL 4778' N 40.20177 W 104.57743 PDOP 2.3 | ⑤ JESSE D29-2 NW/NE SEC. 29 660' FNL 1980' FEL (RECORD LOCATION) (ABANDONED LOCATION) | ⑥ JESSE D29-1J NW/NE SEC. 29 1020' FNL 1615' FEL EL 4786' N 40.20086 W 104.57151 PDOP 2.2 | ⑦ KATE WHITE D29-1 NE/NE SEC. 29 644' FNL 588' FEL EL 4794' N 40.20195 W 104.56783 PDOP 2.0 | ⑧ KATE WHITE D29-8 SE/NE SEC. 29 2040' FNL 578' FEL EL 4793' N 40.19812 W 104.56780 PDOP 2.0 |
| ⑨ KATE WHITE D29-7 SW/NE SEC. 29 2072' FNL 1706' FEL EL 4795' N 40.19797 W 104.57184 PDOP 2.2 | ⑩ KATE RED D29-6 SE/NW SEC. 29 1989' FNL 1979' FWL EL 4779' N 40.19812 W 104.57747 PDOP 2.3 | | | | | | |

NOTES:

- THIS SKETCH DOES NOT REPRESENT A BOUNDARY SURVEY.
- THE DATUM FOR THE LATITUDES AND LONGITUDES ON THIS SKETCH IS NAD83.



0 1000
Scale: 1" = 1000'