

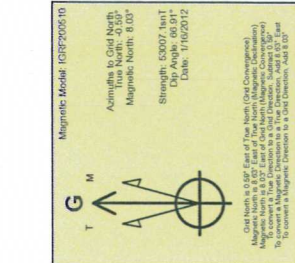
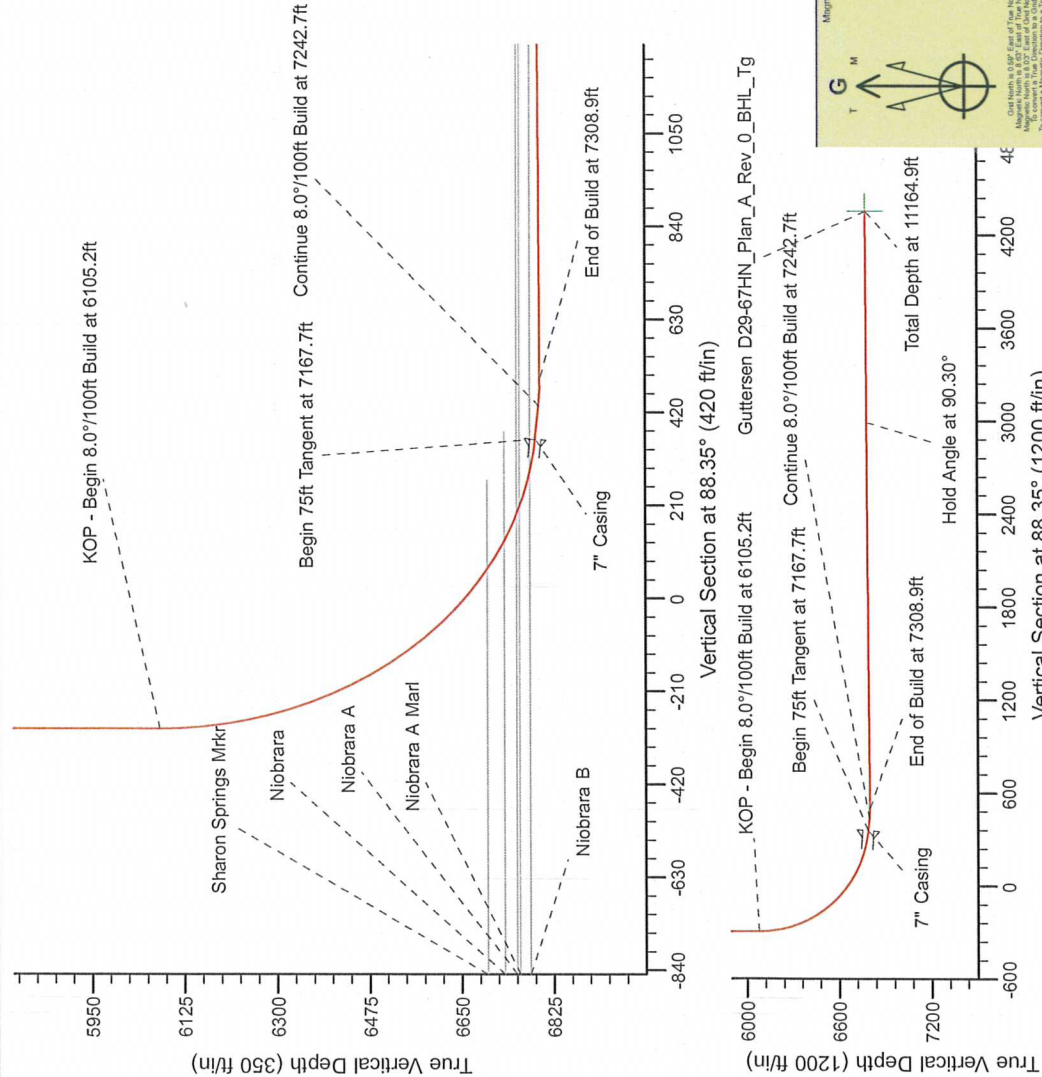
Noble Energy

Project: Weld County Colorado (NAD 83)
 Site: Sec. 29, T3N, R64W
 Well: Guttersen D29-67HN
 Wellbore: Plan A Rev 0 (PERMITTING PLAN ONLY)
 Design: Plan A Rev 0 Proposal

HALLIBURTON
 Sperry Drilling

SECTION DETAILS

Sec	MD	Inc	Azi	TVD	+N/-S	+E/-W	Dleg	TFace	VSec	Target
1	0.0	0.00	0.00	0.0	0.0	0.0	0.00	0.00	0.0	0.0
2	2500.0	0.00	0.00	2500.0	0.0	0.0	0.00	0.00	0.0	0.0
3	2980.0	12.00	270.00	2976.5	0.0	-50.1	2.50	270.00	-50.1	-50.1
4	43917.1	12.00	270.00	3893.1	0.0	-244.9	0.00	0.00	-244.8	-244.8
5	4397.1	0.00	0.00	4369.6	0.0	-295.0	2.50	180.00	-294.9	-294.9
6	6105.2	0.00	0.00	6077.7	0.0	-295.0	0.00	0.00	-294.9	-294.9
7	7167.7	85.00	88.45	6791.2	17.7	358.5	8.00	88.45	358.9	358.9
8	7242.7	85.00	88.45	6797.7	19.7	433.2	0.00	0.00	433.6	433.6
9	7308.9	90.30	88.45	6800.4	21.5	499.4	8.00	0.00	499.8	499.8
10	11164.9	90.30	88.46	6780.2	125.6	4353.9	0.00	79.36	4355.7	Guttersen D29-67HN_Plan_A_Rev_0_BHL_Tg



WELL DETAILS: Guttersen D29-67HN (NAD83 Geodetic System)			
North	407417.07	Ground Level:	4786.0
East	992454.89	Latitude	40° 11' 59.568 N
Long	104° 34' 59.628 W	Longitude	104° 34' 59.628 W
Plan: Plan A Rev 0 Proposal (Guttersen D29-67HN/Plan A Rev 0 (PERMITTING PLAN ONLY))			
Created By: Jose Palino		Date: 5:03, January 17 2012	