

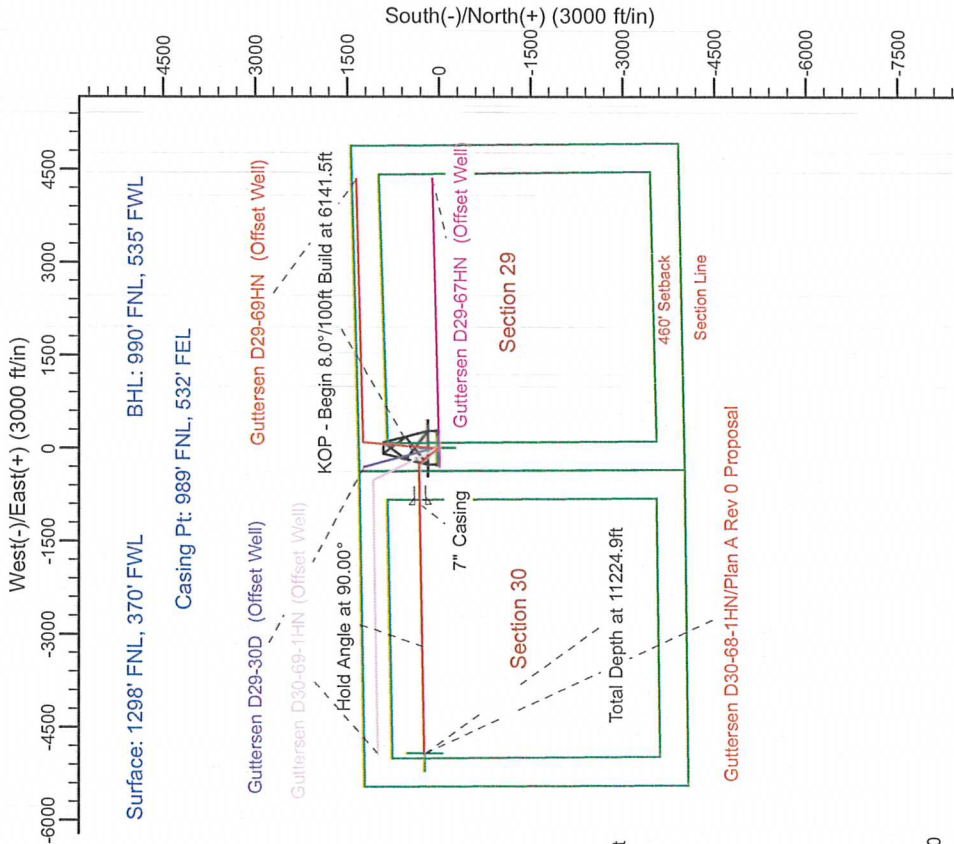
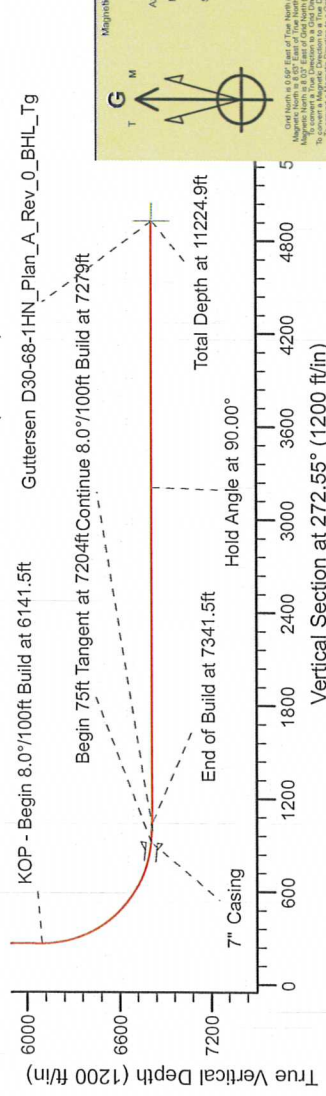
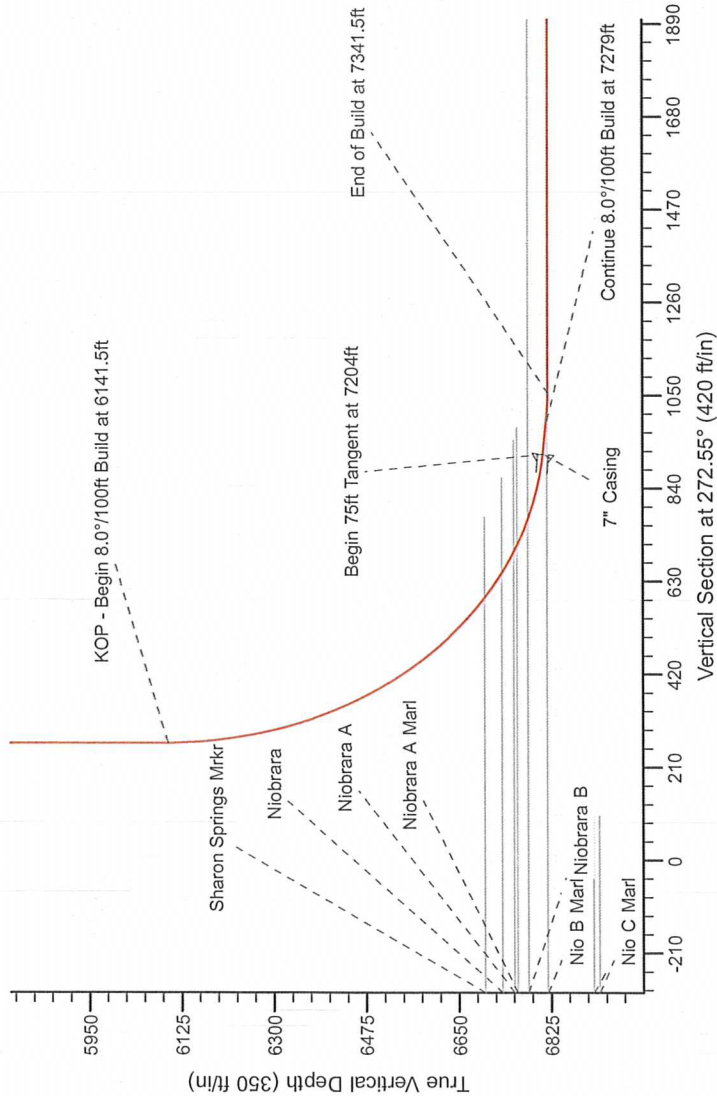
Noble Energy

HALLIBURTON
Sperry Drilling

Project: Weld County Colorado (NAD 83)
Site: Sec. 29, T3N, R64W
Well: Guttersen D30-68-1HN
Wellbore: Plan A Rev 0 (PERMITTING PLAN ONLY)
Design: Plan A Rev 0 Proposal

SECTION DETAILS

Sec	MD	Inc	Azi	TVD	+N/-S	+E/-W	Dleg	TFace	VSecl	Target
1	0.0	0.00	0.00	0.0	0.0	0.0	0.00	0.00	0.0	
2	2200.0	0.00	0.00	2200.0	0.0	0.0	0.00	0.00	0.0	
3	2760.0	14.00	320.82	2754.4	52.8	-43.0	2.50	320.82	45.3	
4	3839.6	14.00	320.82	3801.9	255.2	-208.0	0.00	0.00	219.1	
5	4399.6	0.00	0.00	4356.4	308.0	-251.0	2.50	180.00	284.4	
6	6141.5	0.00	0.00	6098.3	308.0	-251.0	0.00	0.00	284.4	
7	7204.0	85.00	268.91	6811.8	295.6	-904.7	8.00	268.91	916.9	
8	7279.0	85.00	268.91	6818.3	294.1	-979.4	0.00	0.00	981.5	
9	7341.5	90.00	268.91	6821.0	293.0	-1041.8	8.00	0.00	1053.8	
10	1224.9	90.00	268.91	6821.0	219.2	-4924.5	0.00	71.77	4929.4	Guttersen D30-68-1HN_Plan_A_Rev_0_BHL_Tg



WELL DETAILS: Guttersen D30-68-1HN (NAD83 Geodetic System)

Northing 401423.74 Easting 992455.67 Ground Level: 4787.0
Longitude 104° 34' 59.592 W

Plan: Plan A Rev 0 Proposal (Guttersen D30-68-1HN/Plan A Rev 0 (PERMITTING PLAN ONLY))

Created By: Jose Patino

Date: 5:32, January 17 2012

