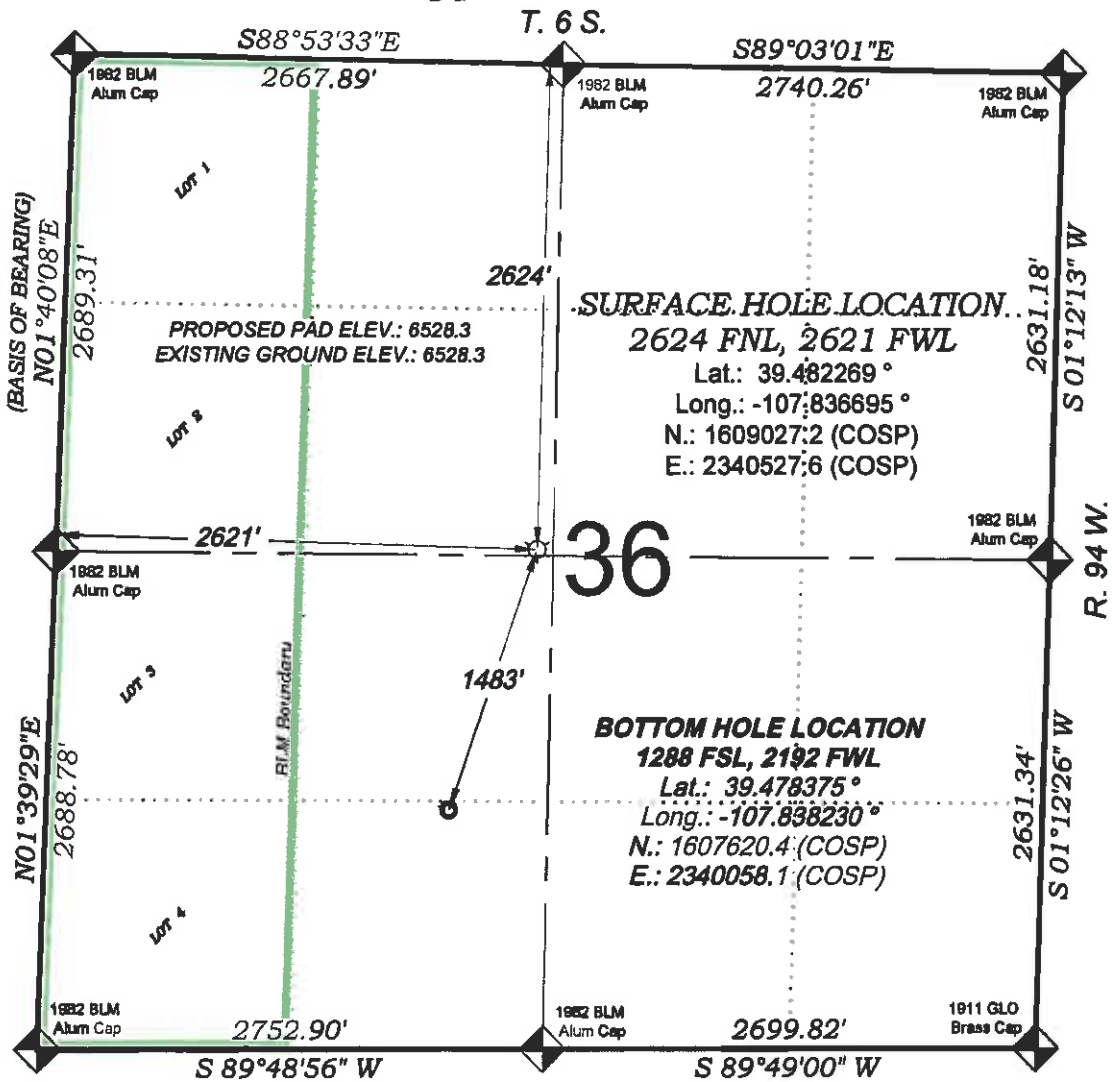
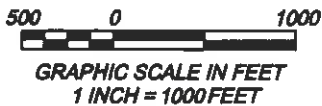


Hoeppli RWF 324-36



**THERE ARE NO VISIBLE
IMPROVEMENTS WITHIN 400'
OF THIS LOCATION**



SURVEYORS STATEMENT

I, MICHAEL J. LANGHORNE, A REGISTERED LAND SURVEYOR IN THE STATE OF COLORADO DO HEREBY CERTIFY THAT THE SURVEY SHOWN HEREON WAS PREPARED UNDER MY DIRECT SUPERVISION AND HAS BEEN STAKED ON THE GROUND AS SHOWN ON THE PLAT AND CHECKING THAT THIS MAP IS A TRUE REPRESENTATION THEREOF.

**MICHAEL J. LANGHORNE, COLORADO REGISTRATION NO. 36572
FOR AND ON BEHALF OF
BOOKCLIFF SURVEY SERVICES, INC.**

REFERENCES

- 1) DEPENDENT RESURVEY T. 6 S., R. 94 W., 6 1h P.M (GLO PLAT)
2) U.S.G.S. QUAD: NORTH MAMM PEAK, CO



SURVEY DATE: 2/7/11
MAP DATE: 3/31/11
SCALE: 1" = 1000'
PLAT: 1 of 1
PROJECT: Williams Valley

- LEGEND -

**FIELD LOCATED SECTION
MONUMENTS AS DESCRIBED**

**FIELD SURVEYED
WELL LOCATION**

CALCULATED BOTTOM HOLE LOCATION

CALCULATED SECTION CORNER LOCATION

NOTES

- 1) ELEVATIONS BASED ON N.A.V.D. 1988 PUBLISHED COORDINATES.
- 2) LATITUDES AND LONGITUDES ARE BASE ON NAD 83,
PUBLISHED COORDINATES
- 3) STATE PLANE COORDINATES ARE BASED ON COLORADO
CENTRAL ZONE, U.S. SURVEY FBRT.
- 4) ELEVATION MASK SET TO 15"
- 5) GPS OPERATOR J. KIRKPATRICK, OBSERVED A PDOP 2.0 ON
SURVEY POINT NUMBER 112198.
- 6) SURFACE AND BOTTOM HOLE LOCATIONS ARE MEASURED 90"
FROM SECTION LINES.

WELL LOCATION PLAT Prepared for:
***Williams* Williams Production, RMT**

SE1/4 NW1/4, SECTION 36
T. 6 S., R. 94 W. of the 6th. P.M.
GARFIELD COUNTY, COLORADO