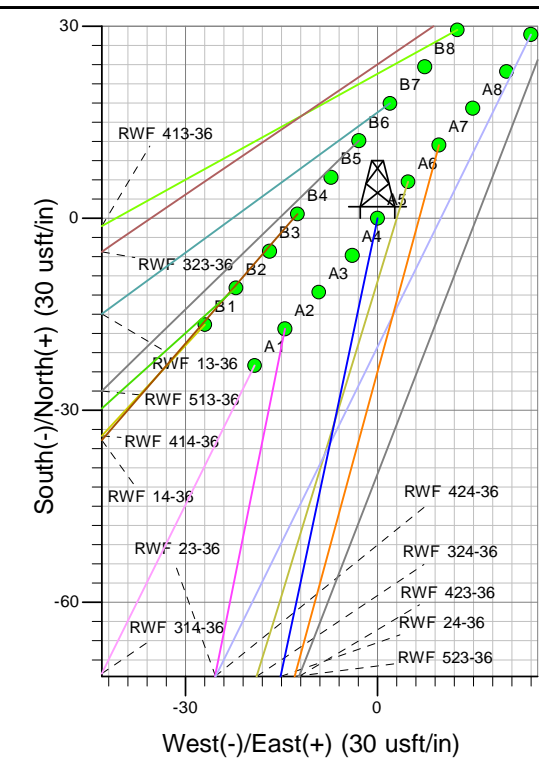
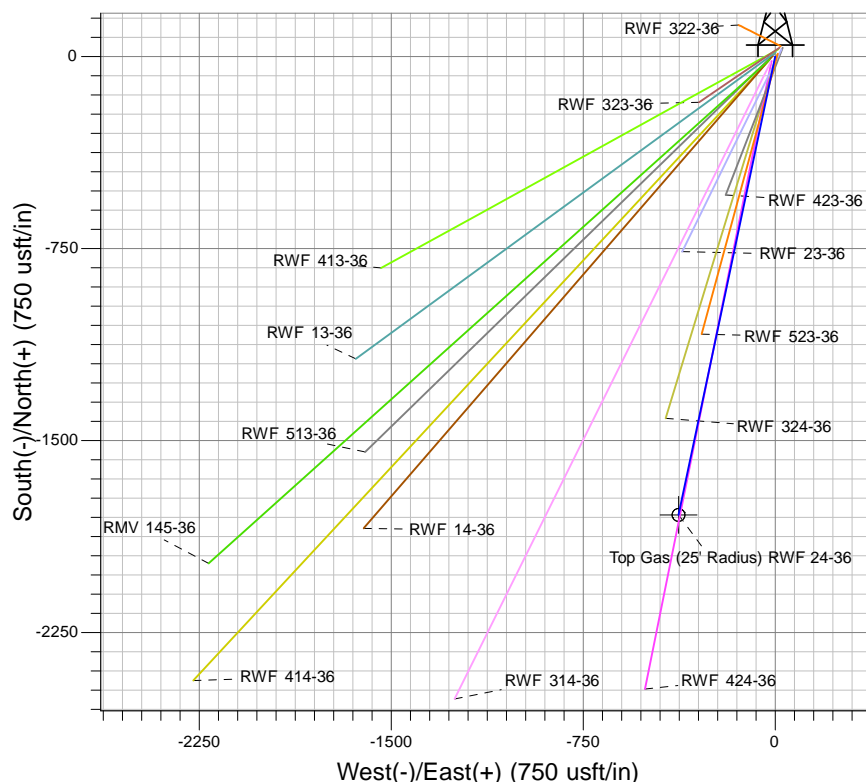
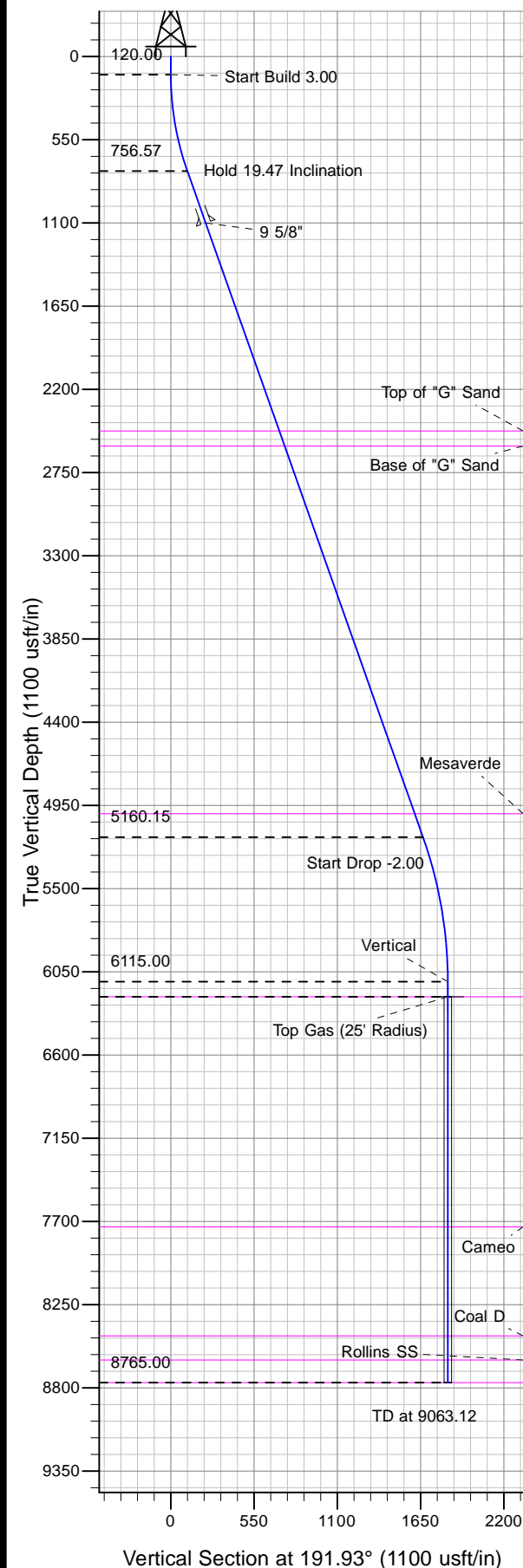




Well Name: RWF 24-36
Surface Location: RWF 33-36 Pad - west
North American Datum 1983 , US State Plane 1983 , Colorado Central Zone
Ground Elevation: 6528.00

+N/-S	+E/-W	Northing	Easting	Latitude	Longitude	Slot
0.00	0.00	1609021.60	2340522.70	39° 28' 56.112 N	107° 50' 12.163 W	A5

KELLY BUSHING @ 6554.00usft (SSD 576)



Project: RU 36-06S-094W
Site: RWF 33-36 Pad - west
Well: RWF 24-36
Plan #3 27Mar12 kjs

M Azimuths to True North
Magnetic North: 10.62°
Magnetic Field
Strength: 52563.1nT
Dip Angle: 65.84°
Date: 9/4/2008
Model: IGRF2005-10

ANNOTATIONS

MD	Inc	Azi	TVD	+N/-S	+E/-W	Vsect	Departure	Annotation
120.00	0.00	0.00	120.00	0.00	0.00	0.00	0.00	Start Build 3.00
768.99	19.47	191.93	756.57	-106.85	-22.57	109.21	109.21	Hold 19.47 Inclination
5439.64	19.47	191.93	5160.15	-1630.01	-344.25	1665.97	1665.97	Start Drop -2.00
6413.12	0.00	0.00	6115.00	-1790.29	-378.10	1829.78	1829.78	Vertical
6513.12	0.00	0.00	6215.00	-1790.29	-378.10	1829.78	1829.78	Top Gas
9063.12	0.00	0.00	8765.00	-1790.29	-378.10	1829.78	1829.78	TD at 9063.12