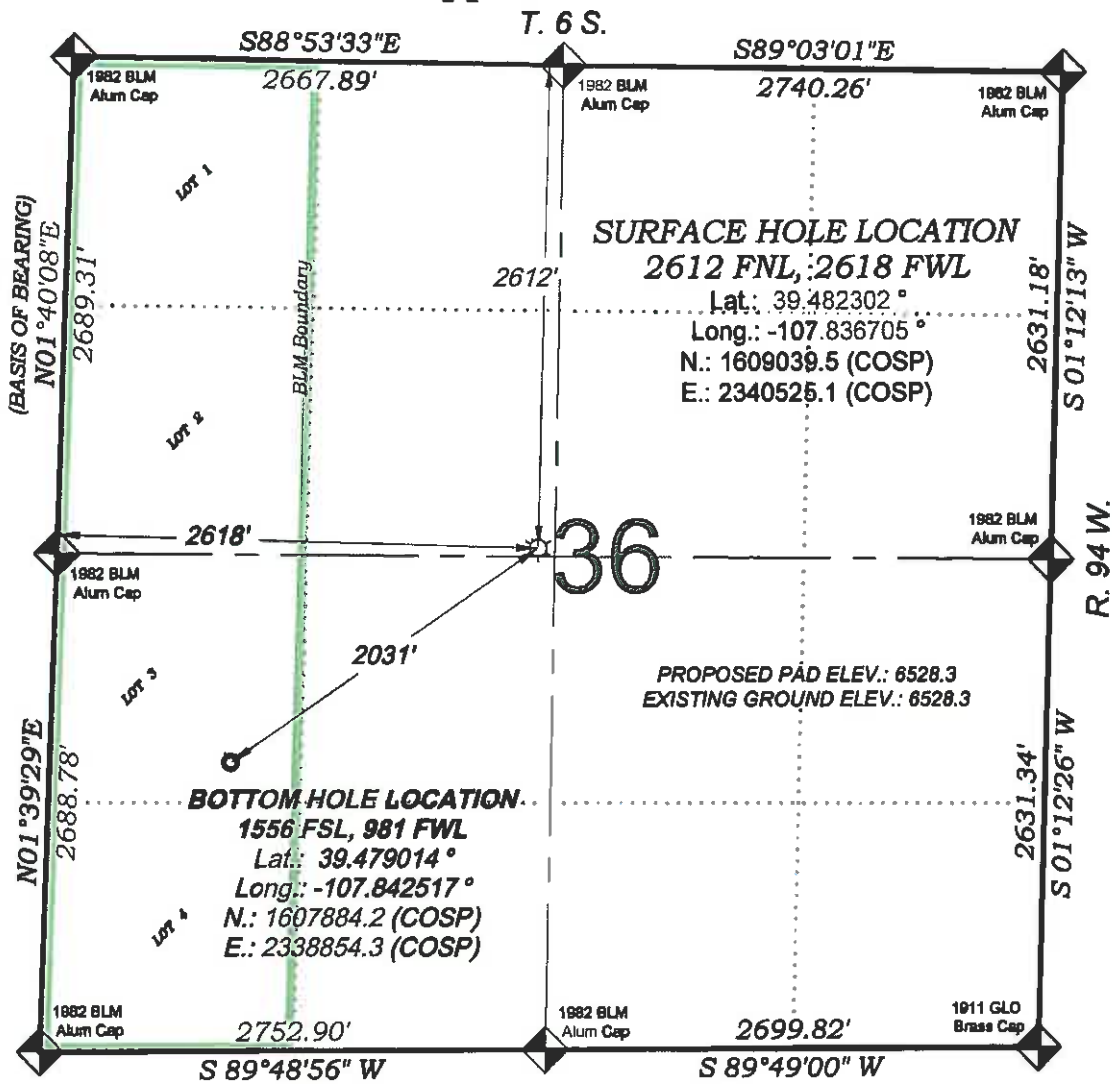


Hoeppli RWF 13-36



**THERE ARE NO VISIBLE
IMPROVEMENTS WITHIN 400'
OF THIS LOCATION**



GRAPHIC SCALE IN FEET
1 INCH = 1000 FEET

SURVEYORS STATEMENT

I, MICHAEL J. LANGHORNE, A REGISTERED LAND SURVEYOR IN THE STATE OF COLORADO DO HEREBY CERTIFY THAT THE SURVEY SHOWN HEREON WAS PREPARED UNDER MY DIRECT SUPERVISION AND HAS BEEN STAKED ON THE GROUND AS SHOWN ON THE PLAT AND CHECKING THAT THIS MAP IS A TRUE REPRESENTATION THEREOF.

**MICHAEL J. LANGHORNE, COLORADO REGISTRATION NO. 36572
FOR AND ON BEHALF OF
BOOKCLIFF SURVEY SERVICES, INC.**

REFERENCES

- 1) DEPENDENT RESURVEY T. 6 S., R. 94 W., 6 th P.M (GLO PLAT)
2) U.S.G.S. QUAD: NORTH MAMM PEAK, CO



SURVEY DATE: 2/7/11
MAP DATE: 3/31/11
SCALE: 1" = 1000'
PLAT: 1 of 1
PROJECT: Williams Valley

- LEGEND -

**FIELD LOCATED SECTION
MONUMENTS AS DESCRIBED**

FIELD SURVEYED
WELL LOCATION

CALCULATED BOTTOM HOLE LOCATION

**CALCULATED SECTION
CORNER LOCATION**

NOTES

- 1) ELEVATIONS BASED ON N.A.V.D. 1988 PUBLISHED COORDINATES.
- 2) LATITUDES AND LONGITUDES ARE BASE ON NAD 83, PUBLISHED COORDINATES
- 3) STATE PLANE COORDINATES ARE BASED ON COLORADO CENTRAL ZONE, U.S. SURVEY FEET.
- 4) ELEVATION MASK SET TO 15"
- 5) GPS OPERATOR J. KIRKPATRICK, OBSERVED A PDOP 2.0 ON SURVEY POINT NUMBER 112198.
- 6) SURFACE AND BOTTOM HOLE LOCATIONS ARE MEASURED 90° FROM SECTION LINES.

WELL LOCATION PLAT Prepared for:

Williams. Williams Production, RMT

SE1/4 NW1/4, SECTION 36
T. 6 S., R. 94 W. of the 6th. P.M.
GARFIELD COUNTY, COLORADO