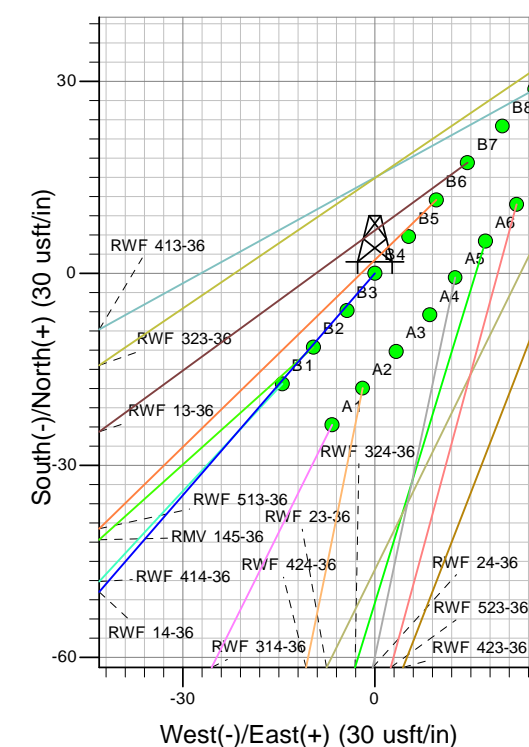
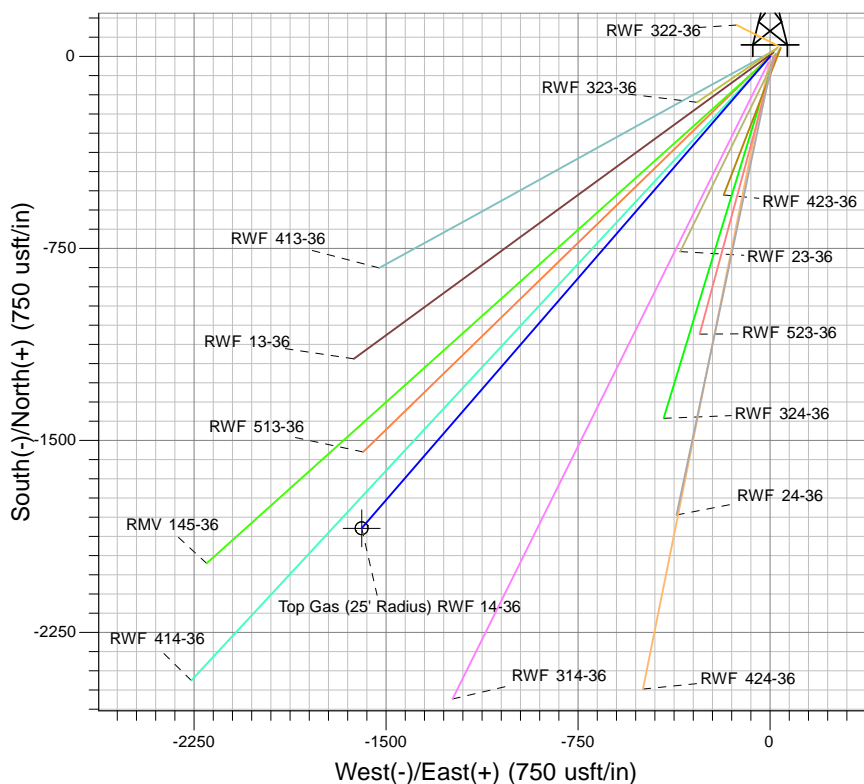
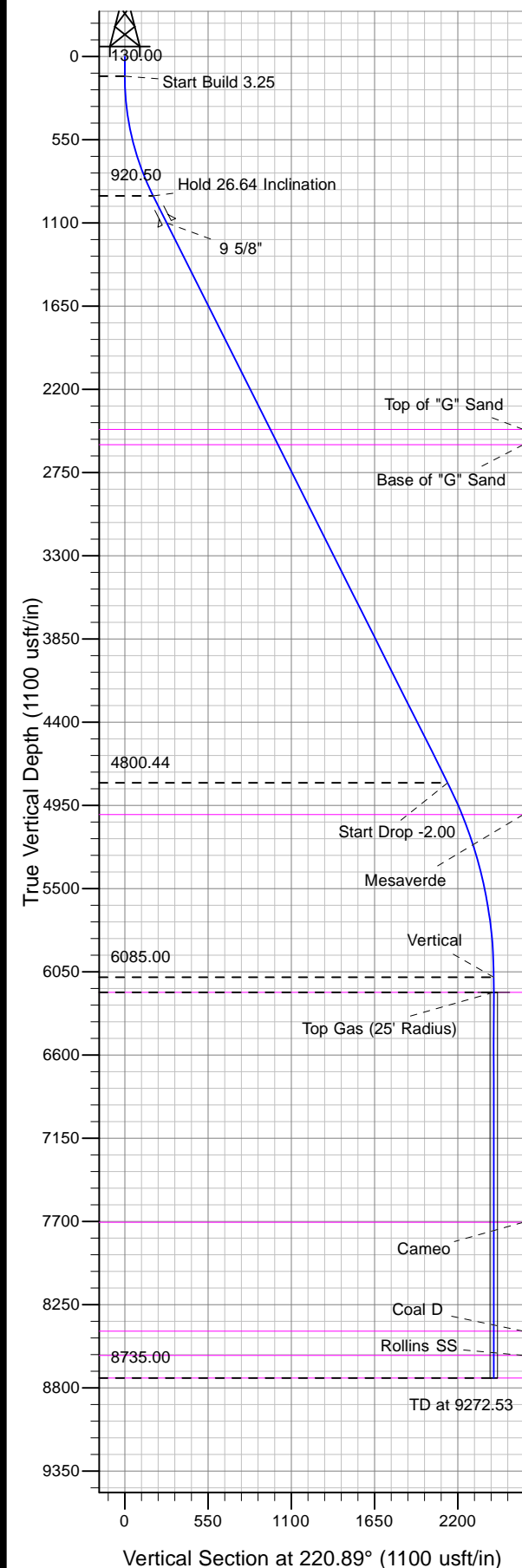




Well Name: RWF 14-36  
Surface Location: RWF 33-36 Pad - west  
North American Datum 1983 , US State Plane 1983 , Colorado Central Zone  
Ground Elevation: 6528.00

+N/-S	+E/-W	Northing	Easting	Latitude	Longitude	Slot
0.00	0.00	1609022.60	2340510.20	39° 28' 56.118 N	107° 50' 12.323 W	B4

KELLY BUSHING @ 6554.00usft (SSD 576)



Project: RU 36-06S-094W  
Site: RWF 33-36 Pad - west  
Well: RWF 14-36  
Plan #3 27Mar12 kjs

Azimuths to True North  
Magnetic North: 10.62°  
Magnetic Field  
Strength: 52563.1nT  
Dip Angle: 65.84°  
Date: 9/4/2008  
Model: IGRF2005-10

#### ANNOTATIONS

MD	Inc	Azi	TVD	+N/-S	+E/-W	Vsect	Departure	Annotation
130.00	0.00	0.00	130.00	0.00	0.00	0.00	0.00	Start Build 3.25
949.71	26.64	220.89	920.50	-141.50	-122.51	187.16	187.16	Hold 26.64 Inclination
5290.50	26.64	220.89	4800.44	-1612.99	-1396.52	2133.55	2133.55	Start Drop -2.00
6622.53	0.00	0.00	6085.00	-1842.92	-1595.60	2437.68	2437.68	Vertical
6722.53	0.00	0.00	6185.00	-1842.92	-1595.60	2437.68	2437.68	Top Gas
9272.53	0.00	0.00	8735.00	-1842.92	-1595.60	2437.68	2437.68	TD at 9272.53