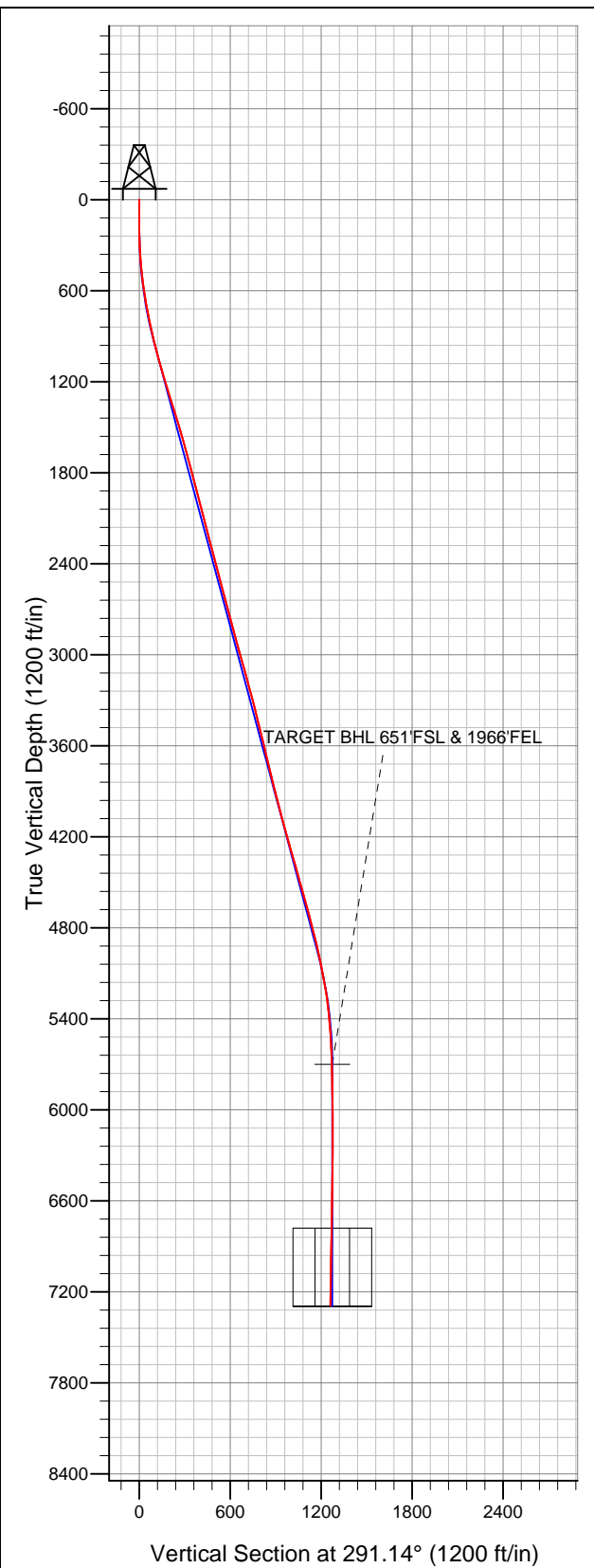


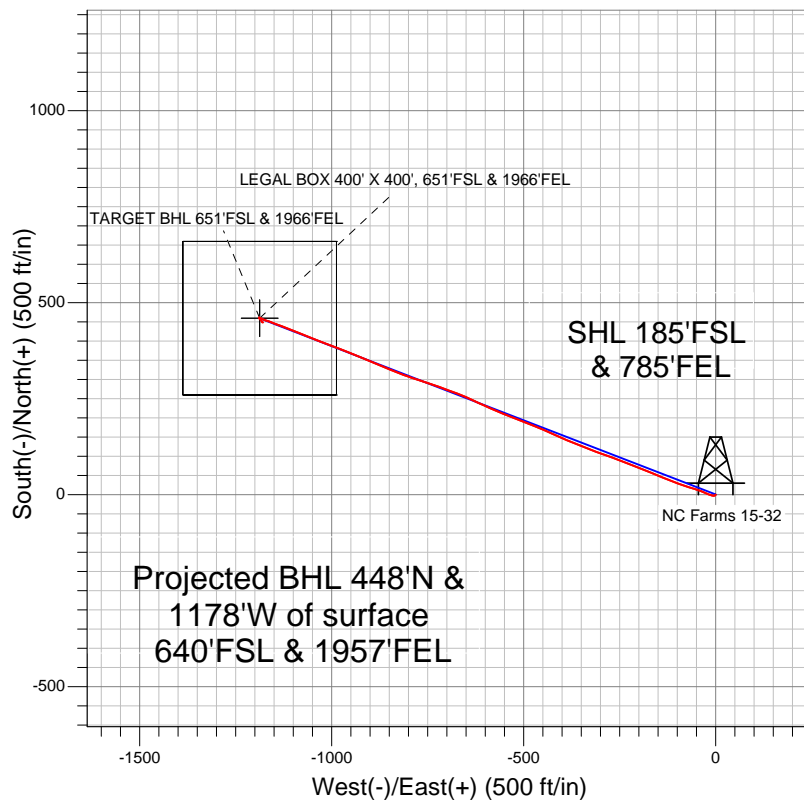
Well Name: NC Farms 15-32

Surface Location: NC Farms 16-32 Pad Sec.32-T7N-R64W
North American Datum 1983 US State Plane 1983Colorado Northern Zone
Ground Elevation: 4804.0

+N/-S	+E/-W	Northing	Easting	Latitude	Longitude	Slot
0.0	0.0	1434685.91	3259232.63	40.522872	-104.567510	
		Original Well Elev		WELL @ 4815.0ft (Original Well Elev)		



BAYSWATER EXPLORATION & PRODUCTION



LEGEND

- Survey #1
- ✕ NC Farms 15-32, Wellbore #1, Plan #1 (11-03-11) V0
- Wellbore #1

Final Survey Plot

Projected Final Survey -
7450'MD & 7291'TVD @ 1261'VS
0.50 deg Inc 60.50 deg AZ

Project: SEC.32-T7N-R64W
Site: NC Farms 16-32 Pad Sec.32-T7N-R64W
Well: NC Farms 15-32
Plan: Wellbore #1



BAYSWATER EXPLORATION & PRODUCTION

SEC.32-T7N-R64W

NC Farms 16-32 Pad Sec.32-T7N-R64W

NC Farms 15-32

Wellbore #1

Survey: Survey #1

Standard Survey Report

25 January, 2012

Company:	BAYSWATER EXPLORATION & PRODUCTION	Local Co-ordinate Reference:	Well NC Farms 15-32
Project:	SEC.32-T7N-R64W	TVD Reference:	WELL @ 4815.0ft (Original Well Elev)
Site:	NC Farms 16-32 Pad Sec.32-T7N-R64W	MD Reference:	WELL @ 4815.0ft (Original Well Elev)
Well:	NC Farms 15-32	North Reference:	True
Wellbore:	Wellbore #1	Survey Calculation Method:	Minimum Curvature
Design:	Wellbore #1	Database:	Landmark

Project	SEC.32-T7N-R64W, Weld County, CO		
Map System:	US State Plane 1983	System Datum:	Mean Sea Level
Geo Datum:	North American Datum 1983		Using Well Reference Point
Map Zone:	Colorado Northern Zone		Using geodetic scale factor

Site		NC Farms 16-32 Pad Sec.32-T7N-R64W			
Site Position:		Northing:	1,434,686.95 ft	Latitude:	40.522873
From:	Lat/Long	Easting:	3,259,292.67 ft	Longitude:	-104.567294
Position Uncertainty:	0.0 ft	Slot Radius:	"	Grid Convergence:	0.60 °

Well	NC Farms 15-32				
Well Position	+N-S	0.0 ft	Northing:	1,434,685.91 ft	Latitude: 40.522872
	+E-W	0.0 ft	Easting:	3,259,232.63 ft	Longitude: -104.567510
Position Uncertainty		0.0 ft	Wellhead Elevation:	ft	Ground Level: 4,804.0 ft

Wellbore	Wellbore #1				
Magnetics	Model Name	Sample Date	Declination (°)	Dip Angle (°)	Field Strength (nT)
	IGRF2010	11/3/2011	8.72	67.17	53,176

Design	Wellbore #1				
Audit Notes:					
Version:	1.0	Phase:	ACTUAL	Tie On Depth:	0.0
Vertical Section:	Depth From (TVD) (ft)	+N/-S (ft)	+E/-W (ft)	Direction (°)	
	0.0	0.0	0.0	291.14	

Survey Program		Date	1/24/2012	
From (ft)	To (ft)	Survey (Wellbore)	Tool Name	Description
161.0	7,450.0	Survey #1 (Wellbore #1)	MWD	MWD - Standard

Survey										
	Measured Depth (ft)	Inclination (°)	Azimuth (°)	Vertical Depth (ft)	+N/-S (ft)	+E/-W (ft)	Vertical Section (ft)	Dogleg Rate (°/100ft)	Build Rate (°/100ft)	Turn Rate (°/100ft)
	0.0	0.00	0.00	0.0	0.0	0.0	0.0	0.00	0.00	0.00
	161.0	0.60	196.10	161.0	-0.8	-0.2	-0.1	0.37	0.37	0.00
	250.0	1.70	232.50	250.0	-2.1	-1.4	0.6	1.42	1.24	40.90
	342.0	3.40	267.20	341.9	-3.0	-5.2	3.8	2.42	1.85	37.72
	434.0	5.40	290.40	433.6	-1.6	-12.0	10.6	2.87	2.17	25.22
	526.0	7.30	291.30	525.1	2.0	-21.5	20.8	2.07	2.07	0.98
	618.0	8.30	291.70	616.2	6.6	-33.1	33.3	1.09	1.09	0.43
	711.0	10.40	290.60	708.0	12.0	-47.2	48.4	2.27	2.26	-1.18
	782.0	12.10	288.40	777.6	16.6	-60.3	62.2	2.47	2.39	-3.10
	865.0	12.80	285.20	858.6	21.8	-77.4	80.0	1.18	0.84	-3.86
	959.0	13.70	291.30	950.1	28.5	-97.8	101.5	1.77	0.96	6.49
	1,053.0	15.10	292.00	1,041.2	37.2	-119.6	124.9	1.50	1.49	0.74

Company:	BAYSWATER EXPLORATION & PRODUCTION	Local Co-ordinate Reference:	Well NC Farms 15-32
Project:	SEC.32-T7N-R64W	TVD Reference:	WELL @ 4815.0ft (Original Well Elev)
Site:	NC Farms 16-32 Pad Sec.32-T7N-R64W	MD Reference:	WELL @ 4815.0ft (Original Well Elev)
Well:	NC Farms 15-32	North Reference:	True
Wellbore:	Wellbore #1	Survey Calculation Method:	Minimum Curvature
Design:	Wellbore #1	Database:	Landmark

Survey									
Measured Depth (ft)	Inclination (°)	Azimuth (°)	Vertical Depth (ft)	+N/-S (ft)	+E/-W (ft)	Vertical Section (ft)	Dogleg Rate (°/100ft)	Build Rate (°/100ft)	Turn Rate (°/100ft)
1,146.0	16.30	291.70	1,130.7	46.5	-142.9	150.1	1.29	1.29	-0.32
1,240.0	17.40	292.60	1,220.7	56.8	-168.1	177.3	1.20	1.17	0.96
1,334.0	17.30	292.40	1,310.4	67.5	-194.0	205.3	0.12	-0.11	-0.21
1,427.0	17.10	290.10	1,399.2	77.5	-219.7	232.8	0.76	-0.22	-2.47
1,521.0	16.90	291.20	1,489.1	87.2	-245.4	260.3	0.40	-0.21	1.17
1,615.0	16.00	291.00	1,579.3	96.8	-270.2	286.9	0.96	-0.96	-0.21
1,708.0	15.30	289.60	1,668.8	105.5	-293.7	312.0	0.86	-0.75	-1.51
1,802.0	15.40	289.70	1,759.5	113.9	-317.2	336.9	0.11	0.11	0.11
1,896.0	14.20	289.70	1,850.4	121.9	-339.8	360.9	1.28	-1.28	0.00
1,989.0	14.60	293.00	1,940.4	130.4	-361.3	384.0	0.98	0.43	3.55
2,083.0	15.10	294.80	2,031.3	140.1	-383.3	408.1	0.72	0.53	1.91
2,177.0	14.60	292.90	2,122.2	149.9	-405.4	432.1	0.74	-0.53	-2.02
2,271.0	13.90	293.50	2,213.3	159.0	-426.6	455.3	0.76	-0.74	0.64
2,363.0	15.40	293.80	2,302.3	168.3	-447.9	478.5	1.63	1.63	0.33
2,458.0	14.70	291.40	2,394.0	177.8	-470.7	503.2	0.99	-0.74	-2.53
2,552.0	14.90	292.30	2,484.9	186.8	-493.0	527.2	0.32	0.21	0.96
2,645.0	14.30	289.10	2,574.9	195.1	-514.9	550.6	1.08	-0.65	-3.44
2,739.0	15.10	292.00	2,665.8	203.4	-537.2	574.4	1.16	0.85	3.09
2,833.0	15.30	294.30	2,756.5	213.1	-559.9	599.1	0.68	0.21	2.45
2,926.0	15.40	293.00	2,846.2	223.0	-582.4	623.7	0.39	0.11	-1.40
3,020.0	15.00	292.80	2,936.9	232.6	-605.1	648.3	0.43	-0.43	-0.21
3,114.0	16.00	296.60	3,027.5	243.1	-627.9	673.4	1.52	1.06	4.04
3,207.0	14.90	293.70	3,117.2	253.7	-650.3	698.1	1.45	-1.18	-3.12
3,301.0	14.90	289.90	3,208.0	262.6	-672.8	722.2	1.04	0.00	-4.04
3,395.0	15.50	291.30	3,298.7	271.3	-695.8	746.9	0.75	0.64	1.49
3,489.0	13.90	289.80	3,389.6	279.7	-718.2	770.7	1.75	-1.70	-1.60
3,582.0	13.80	286.60	3,479.9	286.6	-739.3	792.9	0.83	-0.11	-3.44
3,676.0	14.00	290.70	3,571.2	293.9	-760.7	815.5	1.07	0.21	4.36
3,770.0	13.80	286.70	3,662.4	301.1	-782.1	838.0	1.04	-0.21	-4.26
3,863.0	12.90	289.10	3,752.9	307.7	-802.5	859.5	1.14	-0.97	2.58
3,957.0	13.90	293.30	3,844.4	315.6	-822.8	881.2	1.48	1.06	4.47
4,051.0	14.10	290.60	3,935.6	324.1	-843.9	904.0	0.73	0.21	-2.87
4,144.0	14.70	291.70	4,025.6	332.4	-865.4	927.1	0.71	0.65	1.18
4,238.0	15.80	294.30	4,116.3	342.1	-888.2	951.8	1.38	1.17	2.77
4,332.0	15.70	292.00	4,206.8	352.1	-911.6	977.3	0.67	-0.11	-2.45
4,425.0	15.70	292.10	4,296.3	361.6	-935.0	1,002.5	0.03	0.00	0.11
4,519.0	15.80	291.50	4,386.8	371.1	-958.7	1,028.0	0.20	0.11	-0.64
4,613.0	15.40	291.40	4,477.3	380.3	-982.2	1,053.2	0.43	-0.43	-0.11
4,706.0	15.60	290.60	4,567.0	389.2	-1,005.4	1,078.1	0.31	0.22	-0.86
4,800.0	16.00	291.00	4,657.4	398.3	-1,029.3	1,103.7	0.44	0.43	0.43
4,894.0	14.90	292.60	4,748.0	407.6	-1,052.6	1,128.7	1.25	-1.17	1.70
4,988.0	13.80	291.00	4,839.1	416.3	-1,074.2	1,152.0	1.24	-1.17	-1.70
5,081.0	13.20	291.70	4,929.5	424.2	-1,094.4	1,173.7	0.67	-0.65	0.75
5,175.0	11.70	292.10	5,021.3	431.7	-1,113.2	1,194.0	1.60	-1.60	0.43
5,269.0	10.50	290.10	5,113.5	438.2	-1,130.1	1,212.1	1.34	-1.28	-2.13
5,362.0	9.50	290.60	5,205.1	443.8	-1,145.2	1,228.2	1.08	-1.08	0.54
5,456.0	7.20	290.50	5,298.1	448.6	-1,158.0	1,241.9	2.45	-2.45	-0.11
5,550.0	5.30	289.30	5,391.6	452.1	-1,167.6	1,252.1	2.03	-2.02	-1.28
5,643.0	4.00	291.00	5,484.2	454.7	-1,174.7	1,259.6	1.41	-1.40	1.83
5,737.0	2.90	293.10	5,578.1	456.8	-1,180.0	1,265.3	1.18	-1.17	2.23
5,831.0	1.80	297.70	5,672.0	458.4	-1,183.5	1,269.1	1.19	-1.17	4.89
5,859.1	1.65	299.20	5,700.1	458.9	-1,184.2	1,270.0	0.57	-0.54	5.34
TARGET BHL 651'FSL & 1966'FEL									

Company:	BAYSWATER EXPLORATION & PRODUCTION	Local Co-ordinate Reference:	Well NC Farms 15-32
Project:	SEC.32-T7N-R64W	TVD Reference:	WELL @ 4815.0ft (Original Well Elev)
Site:	NC Farms 16-32 Pad Sec.32-T7N-R64W	MD Reference:	WELL @ 4815.0ft (Original Well Elev)
Well:	NC Farms 15-32	North Reference:	True
Wellbore:	Wellbore #1	Survey Calculation Method:	Minimum Curvature
Design:	Wellbore #1	Database:	Landmark

Survey									
Measured Depth (ft)	Inclination (°)	Azimuth (°)	Vertical Depth (ft)	+N/-S (ft)	+E/-W (ft)	Vertical Section (ft)	Dogleg Rate (°/100ft)	Build Rate (°/100ft)	Turn Rate (°/100ft)
5,924.0	1.30	304.00	5,765.0	459.7	-1,185.6	1,271.6	0.57	-0.53	7.40
6,018.0	1.10	276.80	5,858.9	460.4	-1,187.4	1,273.5	0.63	-0.21	-28.94
6,112.0	0.30	282.20	5,952.9	460.6	-1,188.5	1,274.7	0.85	-0.85	5.74
6,206.0	0.10	256.50	6,046.9	460.6	-1,188.9	1,275.0	0.23	-0.21	-27.34
6,299.0	0.30	228.90	6,139.9	460.4	-1,189.1	1,275.1	0.23	0.22	-29.68
6,393.0	0.30	167.00	6,233.9	460.0	-1,189.2	1,275.1	0.33	0.00	-65.85
6,487.0	0.60	147.90	6,327.9	459.4	-1,188.9	1,274.6	0.35	0.32	-20.32
6,580.0	0.60	142.40	6,420.9	458.6	-1,188.4	1,273.8	0.06	0.00	-5.91
6,674.0	0.70	136.00	6,514.9	457.8	-1,187.7	1,272.8	0.13	0.11	-6.81
6,768.0	1.10	133.20	6,608.9	456.7	-1,186.6	1,271.5	0.43	0.43	-2.98
6,861.0	1.30	141.30	6,701.9	455.3	-1,185.3	1,269.7	0.28	0.22	8.71
6,938.0	1.38	140.89	6,778.9	453.9	-1,184.2	1,268.2	0.11	0.11	-0.54
LEGAL BOX 400' X 400', 651'FSL & 1966'FEL									
6,955.0	1.40	140.80	6,795.9	453.6	-1,183.9	1,267.8	0.11	0.11	-0.50
7,049.0	1.20	148.90	6,889.8	451.9	-1,182.7	1,266.1	0.29	-0.21	8.62
7,142.0	1.10	147.60	6,982.8	450.3	-1,181.7	1,264.6	0.11	-0.11	-1.40
7,236.0	0.90	136.00	7,076.8	449.0	-1,180.7	1,263.2	0.30	-0.21	-12.34
7,330.0	0.80	105.50	7,170.8	448.3	-1,179.6	1,261.8	0.49	-0.11	-32.45
7,408.0	0.60	73.50	7,248.8	448.2	-1,178.6	1,261.0	0.55	-0.26	-41.03
7,450.0	0.50	60.50	7,290.8	448.4	-1,178.3	1,260.7	0.38	-0.24	-30.95

Checked By: _____	Approved By: _____	Date: _____
-------------------	--------------------	-------------