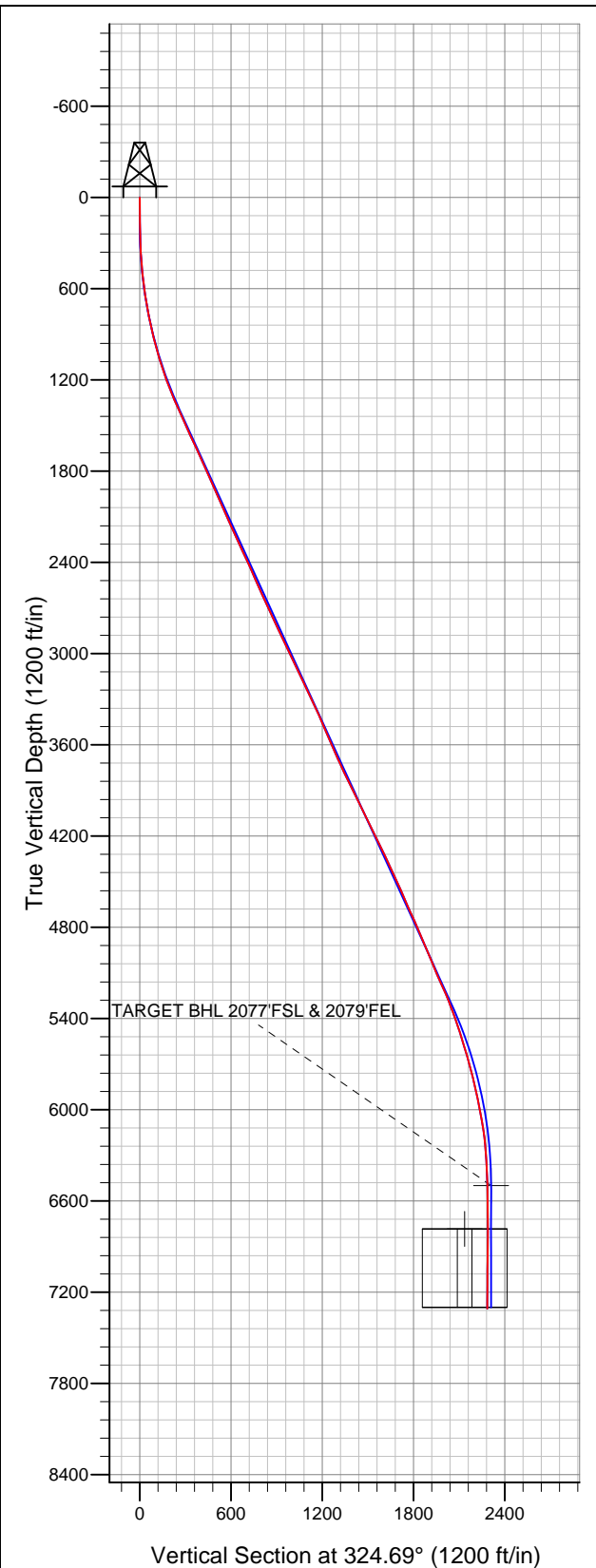


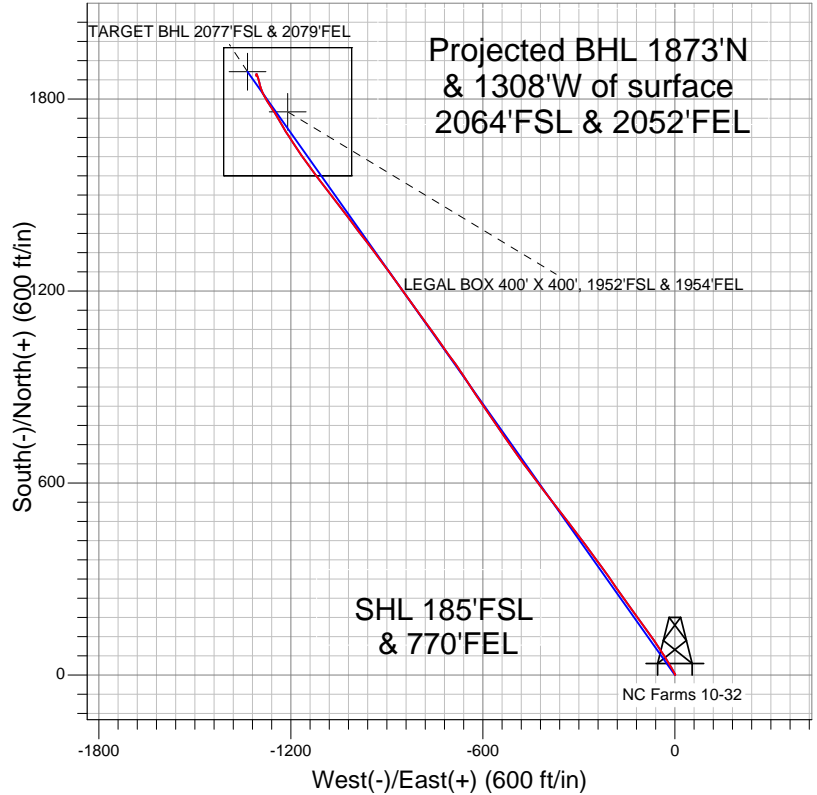
**Well Name: NC Farms 10-32**

Surface Location: NC Farms 16-32 Pad Sec.32-T7N-R64W  
North American Datum 1983 US State Plane 1983 Colorado Northern Zone  
Ground Elevation: 4804.0

+N/-S	+E/-W	Northing	Easting	Latitude	Longitude	Slot
0.0	0.0	1434686.08	3259247.64	40.522872	-104.567456	
Original Well Elev WELL @ 4815.0ft (Original Well Elev)						



**BAYSWATER EXPLORATION & PRODUCTION**



**LEGEND**

- Survey #1
- △ NC Farms 10-32, Wellbore #1, Plan #2 (1-23-12) R V0
- Wellbore #1

**Final Survey Plot**

Projected Final Survey -  
7765'MD & 7309'TVD @ 2284'VS  
0.60 deg Inc 144.00 deg AZ

Project: SEC.32-T7N-R64W  
Site: NC Farms 16-32 Pad Sec.32-T7N-R64W  
Well: NC Farms 10-32  
Plan: Wellbore #1



# **BAYSWATER EXPLORATION & PRODUCTION**

**SEC.32-T7N-R64W**

**NC Farms 16-32 Pad Sec.32-T7N-R64W**

**NC Farms 10-32**

**Wellbore #1**

**Survey: Survey #1**

## **Standard Survey Report**

**30 January, 2012**

<b>Company:</b>	BAYSWATER EXPLORATION & PRODUCTION	<b>Local Co-ordinate Reference:</b>	Well NC Farms 10-32
<b>Project:</b>	SEC.32-T7N-R64W	<b>TVD Reference:</b>	WELL @ 4815.0ft (Original Well Elev)
<b>Site:</b>	NC Farms 16-32 Pad Sec.32-T7N-R64W	<b>MD Reference:</b>	WELL @ 4815.0ft (Original Well Elev)
<b>Well:</b>	NC Farms 10-32	<b>North Reference:</b>	True
<b>Wellbore:</b>	Wellbore #1	<b>Survey Calculation Method:</b>	Minimum Curvature
<b>Design:</b>	Wellbore #1	<b>Database:</b>	Landmark

<b>Project</b>	SEC.32-T7N-R64W, Weld County, CO		
<b>Map System:</b>	US State Plane 1983	<b>System Datum:</b>	Mean Sea Level
<b>Geo Datum:</b>	North American Datum 1983		Using Well Reference Point
<b>Map Zone:</b>	Colorado Northern Zone		Using geodetic scale factor

Site		NC Farms 16-32 Pad Sec.32-T7N-R64W			
Site Position:		Northing:	1,434,686.95 ft	Latitude:	40.522873
From:	Lat/Long	Easting:	3,259,292.67 ft	Longitude:	-104.567294
Position Uncertainty:	0.0 ft	Slot Radius:	"	Grid Convergence:	0.60 °

<b>Well</b>	NC Farms 10-32				
<b>Well Position</b>	<b>+N-S</b>	0.0 ft	<b>Northing:</b>	1,434,686.08 ft	<b>Latitude:</b> 40.522872
	<b>+E-W</b>	0.0 ft	<b>Easting:</b>	3,259,247.64 ft	<b>Longitude:</b> -104.567456
<b>Position Uncertainty</b>		0.0 ft	<b>Wellhead Elevation:</b>	ft	<b>Ground Level:</b> 4,804.0 ft

Wellbore	Wellbore #1				
Magnetics	Model Name	Sample Date	Declination (°)	Dip Angle (°)	Field Strength (nT)
	IGRF2010	1/23/2012	8.69	67.16	53,153

Design	Wellbore #1				
Audit Notes:					
Version:	1.0	Phase:	ACTUAL	Tie On Depth:	0.0
Vertical Section:	Depth From (TVD) (ft)	+N/-S (ft)	+E/-W (ft)	Direction (°)	
	6,500.0	0.0	0.0	324.69	

Survey Program		Date	1/30/2012	
From (ft)	To (ft)	Survey (Wellbore)	Tool Name	Description
161.0	7,765.0	Survey #1 (Wellbore #1)	MWD	MWD - Standard

Survey	Wellbore Data									
	Measured Depth (ft)	Inclination (°)	Azimuth (°)	Vertical Depth (ft)	+N/-S (ft)	+E/-W (ft)	Vertical Section (ft)	Dogleg Rate (°/100ft)	Build Rate (°/100ft)	Turn Rate (°/100ft)
Main Survey	0.0	0.00	0.00	0.0	0.0	0.0	0.0	0.00	0.00	0.00
	161.0	0.80	28.40	161.0	1.0	0.5	0.5	0.50	0.50	0.00
	250.0	1.20	343.10	250.0	2.4	0.6	1.7	0.96	0.45	-50.90
	342.0	3.00	327.30	341.9	5.4	-1.0	5.0	2.04	1.96	-17.17
	434.0	4.60	332.70	433.7	10.7	-4.0	11.0	1.78	1.74	5.87
	526.0	6.40	327.40	525.3	18.3	-8.5	19.8	2.03	1.96	-5.76
	618.0	8.00	328.00	616.6	28.0	-14.6	31.3	1.74	1.74	0.65
	711.0	10.20	329.80	708.4	40.6	-22.2	46.0	2.39	2.37	1.94
	786.0	12.00	329.70	782.0	53.1	-29.5	60.4	2.40	2.40	-0.13
	865.0	12.50	327.90	859.2	67.4	-38.2	77.1	0.80	0.63	-2.28
	959.0	14.30	325.80	950.6	85.7	-50.1	98.9	1.98	1.91	-2.23
	1,053.0	16.00	324.90	1,041.3	105.9	-64.1	123.4	1.83	1.81	-0.96

<b>Company:</b>	BAYSWATER EXPLORATION & PRODUCTION	<b>Local Co-ordinate Reference:</b>	Well NC Farms 10-32
<b>Project:</b>	SEC.32-T7N-R64W	<b>TVD Reference:</b>	WELL @ 4815.0ft (Original Well Elev)
<b>Site:</b>	NC Farms 16-32 Pad Sec.32-T7N-R64W	<b>MD Reference:</b>	WELL @ 4815.0ft (Original Well Elev)
<b>Well:</b>	NC Farms 10-32	<b>North Reference:</b>	True
<b>Wellbore:</b>	Wellbore #1	<b>Survey Calculation Method:</b>	Minimum Curvature
<b>Design:</b>	Wellbore #1	<b>Database:</b>	Landmark

Survey									
Measured Depth (ft)	Inclination (°)	Azimuth (°)	Vertical Depth (ft)	+N/-S (ft)	+E/-W (ft)	Vertical Section (ft)	Dogleg Rate (°/100ft)	Build Rate (°/100ft)	Turn Rate (°/100ft)
1,146.0	18.30	325.80	1,130.2	128.4	-79.6	150.8	2.49	2.47	0.97
1,240.0	20.30	322.80	1,218.9	153.6	-97.8	181.9	2.37	2.13	-3.19
1,334.0	22.50	323.80	1,306.4	181.1	-118.3	216.2	2.37	2.34	1.06
1,428.0	24.50	324.60	1,392.6	211.5	-140.2	253.7	2.15	2.13	0.85
1,521.0	24.60	324.40	1,477.2	243.0	-162.6	292.3	0.14	0.11	-0.22
1,615.0	24.60	325.70	1,562.7	275.1	-185.1	331.4	0.58	0.00	1.38
1,708.0	24.60	325.40	1,647.3	307.0	-207.0	370.1	0.13	0.00	-0.32
1,802.0	24.30	323.20	1,732.8	338.6	-229.7	409.0	1.02	-0.32	-2.34
1,896.0	24.60	323.80	1,818.4	369.9	-252.8	447.9	0.41	0.32	0.64
1,989.0	23.40	323.70	1,903.4	400.4	-275.2	485.8	1.29	-1.29	-0.11
2,083.0	23.80	323.00	1,989.5	430.6	-297.6	523.4	0.52	0.43	-0.74
2,177.0	24.00	321.90	2,075.4	460.7	-320.8	561.4	0.52	0.21	-1.17
2,271.0	24.80	322.90	2,161.0	491.5	-344.5	600.2	0.96	0.85	1.06
2,364.0	23.70	322.00	2,245.8	521.8	-367.8	638.4	1.25	-1.18	-0.97
2,458.0	25.30	322.00	2,331.4	552.5	-391.8	677.3	1.70	1.70	0.00
2,552.0	24.70	323.80	2,416.6	584.2	-415.8	717.0	1.03	-0.64	1.91
2,645.0	23.70	323.10	2,501.4	614.8	-438.5	755.1	1.12	-1.08	-0.75
2,739.0	24.10	322.40	2,587.3	645.1	-461.5	793.2	0.52	0.43	-0.74
2,833.0	25.00	324.70	2,672.8	676.5	-484.7	832.2	1.40	0.96	2.45
2,926.0	24.50	325.40	2,757.3	708.5	-507.0	871.2	0.62	-0.54	0.75
3,020.0	25.50	325.00	2,842.5	741.1	-529.7	910.9	1.08	1.06	-0.43
3,114.0	25.00	324.70	2,927.5	773.9	-552.8	951.0	0.55	-0.53	-0.32
3,208.0	25.90	325.50	3,012.4	807.0	-575.9	991.4	1.02	0.96	0.85
3,301.0	25.00	327.20	3,096.3	840.3	-598.0	1,031.3	1.25	-0.97	1.83
3,395.0	25.40	325.90	3,181.4	873.6	-620.1	1,071.3	0.73	0.43	-1.38
3,489.0	25.80	326.30	3,266.2	907.4	-642.7	1,111.9	0.46	0.43	0.43
3,582.0	25.10	326.70	3,350.1	940.7	-664.8	1,151.9	0.78	-0.75	0.43
3,676.0	23.30	324.30	3,435.9	972.4	-686.6	1,190.4	2.18	-1.91	-2.55
3,770.0	23.60	324.20	3,522.1	1,002.8	-708.4	1,227.8	0.32	0.32	-0.11
3,863.0	23.60	324.90	3,607.3	1,033.1	-730.0	1,265.0	0.30	0.00	0.75
3,957.0	23.80	324.50	3,693.4	1,064.0	-751.9	1,302.8	0.27	0.21	-0.43
4,051.0	25.10	324.60	3,779.0	1,095.7	-774.4	1,341.7	1.38	1.38	0.11
4,144.0	25.90	324.00	3,862.9	1,128.2	-797.8	1,381.8	0.90	0.86	-0.65
4,238.0	26.50	324.10	3,947.3	1,161.8	-822.2	1,423.3	0.64	0.64	0.11
4,332.0	26.90	324.30	4,031.2	1,196.0	-846.9	1,465.5	0.44	0.43	0.21
4,425.0	26.80	323.10	4,114.2	1,229.9	-871.7	1,507.5	0.59	-0.11	-1.29
4,519.0	26.30	324.60	4,198.3	1,263.8	-896.5	1,549.5	0.89	-0.53	1.60
4,614.0	24.80	323.60	4,284.0	1,297.0	-920.5	1,590.5	1.64	-1.58	-1.05
4,706.0	25.00	323.40	4,367.5	1,328.1	-943.6	1,629.2	0.24	0.22	-0.22
4,800.0	24.10	322.50	4,453.0	1,359.3	-967.1	1,668.2	1.04	-0.96	-0.96
4,894.0	23.50	322.20	4,539.0	1,389.3	-990.3	1,706.1	0.65	-0.64	-0.32
4,988.0	24.20	322.80	4,624.9	1,419.5	-1,013.4	1,744.1	0.79	0.74	0.64
5,081.0	25.40	323.00	4,709.4	1,450.6	-1,036.9	1,783.1	1.29	1.29	0.22
5,175.0	23.10	322.20	4,795.1	1,481.3	-1,060.4	1,821.7	2.47	-2.45	-0.85
5,269.0	23.20	321.60	4,881.5	1,510.4	-1,083.2	1,858.6	0.27	0.11	-0.64
5,362.0	22.60	322.60	4,967.2	1,538.9	-1,105.4	1,894.7	0.77	-0.65	1.08
5,456.0	22.20	324.00	5,054.1	1,567.6	-1,126.8	1,930.5	0.71	-0.43	1.49
5,550.0	24.30	324.80	5,140.4	1,597.8	-1,148.4	1,967.7	2.26	2.23	0.85
5,643.0	23.70	325.40	5,225.4	1,628.8	-1,170.1	2,005.5	0.70	-0.65	0.65
5,737.0	21.10	326.40	5,312.3	1,658.5	-1,190.2	2,041.3	2.80	-2.77	1.06
5,831.0	19.30	327.10	5,400.5	1,685.6	-1,208.0	2,073.7	1.93	-1.91	0.74
5,924.0	17.60	330.00	5,488.7	1,710.7	-1,223.3	2,103.1	2.08	-1.83	3.12
6,018.0	16.80	329.40	5,578.5	1,734.7	-1,237.4	2,130.8	0.87	-0.85	-0.64

<b>Company:</b>	BAYSWATER EXPLORATION & PRODUCTION	<b>Local Co-ordinate Reference:</b>	Well NC Farms 10-32
<b>Project:</b>	SEC.32-T7N-R64W	<b>TVD Reference:</b>	WELL @ 4815.0ft (Original Well Elev)
<b>Site:</b>	NC Farms 16-32 Pad Sec.32-T7N-R64W	<b>MD Reference:</b>	WELL @ 4815.0ft (Original Well Elev)
<b>Well:</b>	NC Farms 10-32	<b>North Reference:</b>	True
<b>Wellbore:</b>	Wellbore #1	<b>Survey Calculation Method:</b>	Minimum Curvature
<b>Design:</b>	Wellbore #1	<b>Database:</b>	Landmark

Survey									
Measured Depth (ft)	Inclination (°)	Azimuth (°)	Vertical Depth (ft)	+N/-S (ft)	+E/-W (ft)	Vertical Section (ft)	Dogleg Rate (°/100ft)	Build Rate (°/100ft)	Turn Rate (°/100ft)
6,112.0	15.80	328.80	5,668.7	1,757.3	-1,250.9	2,157.1	1.08	-1.06	-0.64
6,206.0	15.10	325.60	5,759.3	1,778.4	-1,264.4	2,182.1	1.17	-0.74	-3.40
6,300.0	12.70	330.20	5,850.6	1,797.5	-1,276.5	2,204.6	2.81	-2.55	4.89
6,393.0	11.40	334.70	5,941.5	1,814.6	-1,285.5	2,223.8	1.72	-1.40	4.84
6,487.0	10.90	338.80	6,033.8	1,831.3	-1,292.7	2,241.6	1.00	-0.53	4.36
6,580.0	9.60	347.50	6,125.3	1,847.1	-1,297.6	2,257.3	2.17	-1.40	9.35
6,674.0	5.60	344.60	6,218.4	1,859.2	-1,300.5	2,268.8	4.27	-4.26	-3.09
6,768.0	4.20	341.70	6,312.1	1,866.9	-1,302.8	2,276.4	1.51	-1.49	-3.09
6,861.0	3.20	341.40	6,404.9	1,872.6	-1,304.7	2,282.2	1.08	-1.08	-0.32
6,955.0	1.50	336.50	6,498.8	1,876.2	-1,306.0	2,285.9	1.82	-1.81	-5.21
6,956.6	1.48	336.35	6,500.4	1,876.2	-1,306.0	2,285.9	1.04	-1.01	-9.59
TARGET BHL 2077'FSL & 2079'FEL									
7,049.0	0.60	313.60	6,592.8	1,877.6	-1,306.8	2,287.6	1.04	-0.96	-24.61
7,142.0	0.30	256.00	6,685.8	1,877.9	-1,307.4	2,288.1	0.55	-0.32	-61.94
7,236.0	0.50	207.90	6,779.8	1,877.5	-1,307.9	2,288.0	0.40	0.21	-51.17
7,240.8	0.51	207.79	6,784.6	1,877.5	-1,307.9	2,288.0	0.21	0.21	-2.19
LEGAL BOX 400' X 400', 1952'FSL & 1954'FEL									
7,330.0	0.70	206.40	6,873.8	1,876.6	-1,308.3	2,287.6	0.21	0.21	-1.56
7,454.0	0.50	183.20	6,997.8	1,875.4	-1,308.7	2,286.8	0.25	-0.16	-18.71
7,517.0	0.60	173.80	7,060.8	1,874.8	-1,308.7	2,286.3	0.21	0.16	-14.92
7,611.0	0.50	164.80	7,154.8	1,873.9	-1,308.5	2,285.5	0.14	-0.11	-9.57
7,723.0	0.60	149.30	7,266.8	1,872.9	-1,308.1	2,284.4	0.16	0.09	-13.84
7,765.0	0.60	144.00	7,308.8	1,872.6	-1,307.8	2,284.0	0.13	0.00	-12.62

Checked By: \_\_\_\_\_ Approved By: \_\_\_\_\_ Date: \_\_\_\_\_