
OXY GRAND JUNCTION EBUSINESS

CC 697-09-04B

Garfield County , Colorado

Cement Surface Casing

20-Dec-2011

Post Job Summary

The Road to Excellence Starts with Safety

Sold To #: 344034	Ship To #: 2897790	Quote #:	Sales Order #: 8561202
Customer: OXY GRAND JUNCTION EBUSINESS	Customer Rep: Adams, Derick		
Well Name: CC	Well #: 697-09-04B	API/UWI #: 05-045-70710	
Field:	City (SAP):	County/Parish: Garfield	State: Colorado
Lat: N 39.549 deg. OR N 39 deg. 32 min. 55.536 secs.	Long: W 108.23 deg. OR W -109 deg. 46 min. 11.352 secs.		
Contractor: H&P Drilling	Rig/Platform Name/Num: H&P 330		
Job Purpose: Cement Surface Casing			
Well Type: Development Well	Job Type: Cement Surface Casing		
Sales Person: HIMES, JEFFREY	Srv Supervisor: TRIPLETT, MICHEAL	MBU ID Emp #: 447908	

Job Personnel

HES Emp Name	Exp Hrs	Emp #	HES Emp Name	Exp Hrs	Emp #	HES Emp Name	Exp Hrs	Emp #
HAYES, JESSE Doug	18.5	403601	ROMKEE, DALE Alan	18.5	488215	STILLSON, ERIC W	18.5	393789
TRIPLETT, MICHEAL Anthony	18.5	447908						

Equipment

HES Unit #	Distance-1 way	HES Unit #	Distance-1 way	HES Unit #	Distance-1 way	HES Unit #	Distance-1 way
10567589C	120 mile	10867094	120 mile	10897925	120 mile	10951246	120 mile
10995025	120 mile	11021972	120 mile	11027039	120 mile		

Job Hours

Date	On Location Hours	Operating Hours	Date	On Location Hours	Operating Hours	Date	On Location Hours	Operating Hours
12/19/2011	4	0	12/20/2011	14.5	4			

TOTAL Total is the sum of each column separately

Job

Formation Name	Formation Depth (MD)	Top	Bottom	Form Type	Job depth MD	Job Depth TVD	Water Depth	Perforation Depth (MD)	From	To
				BHST	2720. ft	2720. ft				
							Wk Ht Above Floor			. ft

Job Times

Date	Time	Time Zone
19 - Dec - 2011	15:00	MST
19 - Dec - 2011	20:00	MST
20 - Dec - 2011	06:50	MST
20 - Dec - 2011	13:55	MST
20 - Dec - 2011	14:30	MST

Well Data

Description	New / Used	Max pressure psig	Size in	ID in	Weight lbm/ft	Thread	Grade	Top MD ft	Bottom MD ft	Top TVD ft	Bottom TVD ft
-------------	------------	-------------------	---------	-------	---------------	--------	-------	-----------	--------------	------------	---------------

Sales/Rental/3rd Party (HES)

Description	Qty	Qty uom	Depth	Supplier
PLUG,CMTG,TOP,9 5/8,HWE,8.16 MIN/9.06 MA	1	EA		

Tools and Accessories

Type	Size	Qty	Make	Depth	Type	Size	Qty	Make	Depth	Type	Size	Qty	Make
Guide Shoe					Packer					Top Plug			
Float Shoe					Bridge Plug					Bottom Plug			
Float Collar					Retainer					SSR plug set			
Insert Float										Plug Container			
Stage Tool										Centralizers			

Miscellaneous Materials

Gelling Agt	Conc	Surfactant	Conc	Acid Type	Qty	Conc	%
Treatment Fld	Conc	Inhibitor	Conc	Sand Type	Size	Qty	

Fluid Data										
Stage/Plug #: 1										
Fluid #	Stage Type	Fluid Name	Qty	Qty uom	Mixing Density lbm/gal	Yield ft ³ /sk	Mix Fluid Gal/sk	Rate bbl/min	Total Mix Fluid Gal/sk	
1	Water Spacer		20.00	bbl	8.33			4.0		
2	Gel Spacer		20.00	bbl				4.0		
3	Water Spacer		20.00	bbl	8.33			4.0		
4	VersaCem Lead Cement	VERSACEM (TM) SYSTEM (452010)	1070.0	sacks	12.3	2.33	12.62	6.5	12.62	
12.62 Gal		FRESH WATER								
5	VersaCem Tail Cement	VERSACEM (TM) SYSTEM (452010)	170.0	sacks	12.8	2.07	10.67	6.5	10.67	
10.67 Gal		FRESH WATER								
6	Displacement		202.00	bbl	.	.0	.0	10.0		
7	Topout Cement	HALCEM (TM) SYSTEM (452986)	100	sacks	12.5	1.97	10.96	4.0	10.96	
10.96 Gal		FRESH WATER								
Calculated Values		Pressures		Volumes						
Displacement	202.1	Shut In: Instant		Lost Returns		Cement Slurry		Pad		
Top Of Cement	SURFACE	5 Min		Cement Returns	0	Actual Displacement	202.1	Treatment		
Frac Gradient		15 Min		Spacers	0	Load and Breakdown		Total Job	769	
Rates										
Circulating	0	Mixing		6.5	Displacement	10	Avg. Job			
Cement Left In Pipe	Amount	46.1 ft	Reason	Shoe Joint						
Frac Ring # 1 @	ID		Frac ring # 2 @	ID		Frac Ring # 3 @	ID		Frac Ring # 4 @	ID
The Information Stated Herein Is Correct				Customer Representative Signature						

The Road to Excellence Starts with Safety

Sold To #: 344034	Ship To #: 2897790	Quote #:	Sales Order #: 8561202
Customer: OXY GRAND JUNCTION EBUSINESS		Customer Rep: Adams, Derick	
Well Name: CC	Well #: 697-09-04B	API/UWI #: 05-045-70710	
Field:	City (SAP):	County/Parish: Garfield	State: Colorado
Legal Description:			
Lat: N 39.549 deg. OR N 39 deg. 32 min. 55.536 secs.		Long: W 108.23 deg. OR W -109 deg. 46 min. 11.352 secs.	
Contractor: H&P Drilling		Rig/Platform Name/Num: H&P 330	
Job Purpose: Cement Surface Casing			Ticket Amount:
Well Type: Development Well		Job Type: Cement Surface Casing	
Sales Person: HIMES, JEFFREY		Srvc Supervisor: TRIPLETT, MICHEAL	MBU ID Emp #: 447908

Activity Description	Date/Time	Cht #	Rate bbl/min	Volume bbl		Pressure psig		Comments
				Stage	Total	Tubing	Casing	
Call Out	12/19/2011 15:00							
Pre-Convoy Safety Meeting	12/19/2011 17:30							ENTIRE CREW, OBSERVE ALL SAFE DRIVING PROCEDURES
Arrive At Loc	12/19/2011 20:00							RIG RUNNING CASING.
Assessment Of Location Safety Meeting	12/19/2011 20:15							REVIEWED EMERGENCY PLAN, ASSESSED WORK AREA AND SPOTTED EQUIPMENT.
Pre-Rig Up Safety Meeting	12/20/2011 00:00							ENTIRE CREW, WALKED THROUGH RIG UP LOOKING FOR HAZARDS.
Rig-Up Equipment	12/20/2011 00:15							1 PICK UP, 1 HT400 PUMP TRUCK, 2 660 BULK CEMENT TRUCKS, 2 BULK CEMENT SILOS, 1 QUICK LATCH HEAD WITH PLUG.
Pre-Job Safety Meeting	12/20/2011 06:30							ENTIRE CREW, CO REP AND RIG CREW.

Activity Description	Date/Time	Cht #	Rate bbl/ min	Volume bbl		Pressure psig		Comments
				Stage	Total	Tubing	Casing	
Start Job	12/20/2011 06:50							TD 2720' TP 2660' SJ 46.1' FC 2613.9' MW 8.9 PPG, 9 5/8 36# CASING IN 14 3/4 HOLE, PARASITE SET AT 2516. PUMP CEMENT JOB THOROUGH TOP DRIVE DUE TO CASING STUCK 30 FT UP. VERIFIED WITH LARRY COOKSEY AND SAID IT WAS OKAY.
Pump Water	12/20/2011 06:53		2	2			30.0	FILL LINES BEFORE TESTING
Pressure Test	12/20/2011 07:03						2500	HELD PRESSURE FOR 2 MIN, PRESSURE HELD, NO LEAKS. PRESSURE TESTED KELLY LINE TO TOPDRIVE.
Pump Spacer 1	12/20/2011 07:16		4	20			180.0	FRESH WATER, PREMIXED CEMENT TUB AND WEIGHED WITH SCALES.
Pump Spacer 2	12/20/2011 07:30		4	20			86.0	GEL SPACER, 20 BBLs WATER WITH 5 GAL LGC.
Pump Spacer 3	12/20/2011 07:37		4	20			110.0	FRESH WATER
Pump Lead Cement	12/20/2011 07:43		6	444			320.0	1024 SKS VERSACEM, 12.3 PPG, 2.33 CUFT/SK, 12.62 GAL/SK, 7 BOXES TUFF FIBER MIXED IN DOWNHOLE SIDE OF TUB ON THE FLY.
Comment	12/20/2011 07:44							DOWNHOLE DENSOMETER WAS READING INCORRECT ENTIRE JOB, THE DENSITY WOULD NOT CHANGE WITHOUT HAVING TO AUTOCAL IT, ON CEMENT WE WEIGHED WITH SCALES NUMEROUS TIMES TO VERIFY RECIRC DENSITY.

Activity Description	Date/Time	Cht #	Rate bbl/ min	Volume bbl		Pressure psig		Comments
				Stage	Total	Tubing	Casing	
Pump Tail Cement	12/20/2011 09:20		6	62.6			330.0	180 SKS VERSACEM, 12.8 PPG, 2.07 CUFT/SK, 10.67 GAL/SK,
Shutdown	12/20/2011 09:32							NEVER HAD RETURNS BEFORE THE JOB. CASING GOT STUCK 35' BEFORE LANDING. 35' OF PIPE WAS ABOVE THE RIG FLOOR.
Drop Top Plug	12/20/2011 09:35							VARIFIED PLUG LEFT CONTAINER.
Pump Displacement	12/20/2011 09:37		10	202.1			820.0	FRESH WATER
Slow Rate	12/20/2011 09:56		2	192.1			35.0	SLOWED RATE TO 1 BPM TO BUMP PLUG.
Bump Plug	12/20/2011 10:02							PLUG LANDED AT 202.1BBLs GONE AT 50 PSI, BUMPED UP TO 550 PSI AND HELD FOR MIN PER CO REP.
Check Floats	12/20/2011 10:04							FLOATS HELD, WHEN RELEASED PRESSURE GOT 1 BBL OF WATER BACK TO TRUCK.
Safety Huddle	12/20/2011 10:05							RIG UP IRON TO TEST CASING.
Pressure Up	12/20/2011 10:07						1425	PRESSURE UP TO 1425 PSI TO TEST CASING.
Release Casing Pressure	12/20/2011 10:10							RELEASED PRESSURE AT 1419 PSI, GOOD TEST.
Safety Huddle	12/20/2011 10:12							RIG UP TO TOPOUT. USED TOPOUT IN SILO WITH 600 SKS REMAINING FROM PREVIOUS WELL, IT WAS CHARGED ON THAT TICKET.
Safety Huddle	12/20/2011 10:15							RIG UP IRON TO CELLAR TO PUMP THROUGH PARASITE.

Activity Description	Date/Time	Cht #	Rate bbl/ min	Volume bbl		Pressure psig		Comments
				Stage	Total	Tubing	Casing	
Pump Water	12/20/2011 10:17		2	10			160.0	10 BBLS WATER WITH 10 LBS SUGAR PUMPED TO CLEAR PARASITE, CAUGHT PRESSURE AT 6 BBLS GONE.
Shutdown	12/20/2011 10:22							PARASITE CLEAR.
Pump Water	12/20/2011 11:36		2	2			50	PUMP WATER TO ENSURE LINES ARE CLEAR BEFORE MIXING CEMENT.
Pump Cement	12/20/2011 11:37		4	35			160.0	TOPOUT CEMENT 100 SACKS USED, 12.5 PPG, 1.97 CUFT/SK, 10.96 GAL/SK. PUMPED 27 BBLS AND SHUTDOWN DUE TO GETTING CEMENT RETURNS. WAITED 6 MINUTES THEN PUMPED THE REST OF TUB OUT FOR A TOTAL OF 35 BBLS OF TOPOUT.
Pump Water	12/20/2011 11:54		4	1			160.0	PUMP WATER TO CLEAR IRON OF CEMENT.
Shutdown	12/20/2011 11:55							GOT CEMENT TO SURFACE WITH 27 BBLS AWAY, GOT 8 BBLS BACK TO SURFACE. LET CEMENT SET FOR 2 HOURS TO SEE HOW FAR IT WOULD FALL, ONLY FELL 11'. TIME STOPPED AT 13:55 ON 12/20/2011 FOR ADDITIONAL HOURS, 6 HOURS CHARGED.

Activity Description	Date/Time	Cht #	Rate bbl/ min	Volume bbl		Pressure psig		Comments
				Stage	Total	Tubing	Casing	
End Job	12/20/2011 13:55							DID NOT RECIPROCATATE PIPE DURING JOB. 520 SACKS TOPOUT CHARGED ON THIS TICKET AND WILL BE BROUGHT UP ON NEXT JOB.
Post-Job Safety Meeting (Pre Rig-Down)	12/20/2011 14:00							ENTIRE CREW
Rig-Down Equipment	12/20/2011 14:05							
Pre-Convoy Safety Meeting	12/20/2011 14:25							ENTIRE CREW, OBSERVE ALL SAFE DRIVING PROCEDURES.
Crew Leave Location	12/20/2011 14:30							THANK YOU FOR USING HALLIBURTON, MIKE TRIPLETT AND CREW.

HALLIBURTON

Water Analysis Report

Company: OXY
Submitted by: MIKE TRIPLETT
Attention: LAB
Lease: CC
Well #: 697-09-04B

Date: 12/20/2011
Date Rec.: 12/20/2011
S.O.#: 8961202
Job Type: SURFACE

Specific Gravity	<i>MAX</i>	<i>1</i>
pH	<i>8</i>	<i>7</i>
Potassium (K)	<i>5000</i>	<i>250</i> Mg / L
Calcium (Ca)	<i>500</i>	<i>120</i> Mg / L
Iron (FE2)	<i>300</i>	<i>0</i> Mg / L
Chlorides (Cl)	<i>3000</i>	<i>0</i> Mg / L
Sulfates (SO ₄)	<i>1500</i>	<i><200</i> Mg / L
Chlorine (Cl ₂)		<i>0</i> Mg / L
Temp	<i>40-80</i>	<i>80</i> Deg
Total Dissolved Solids		<i>120</i> Mg / L

Respectfully: MIKE TRIPLETT

Title: CEMENTING SUPERVISOR

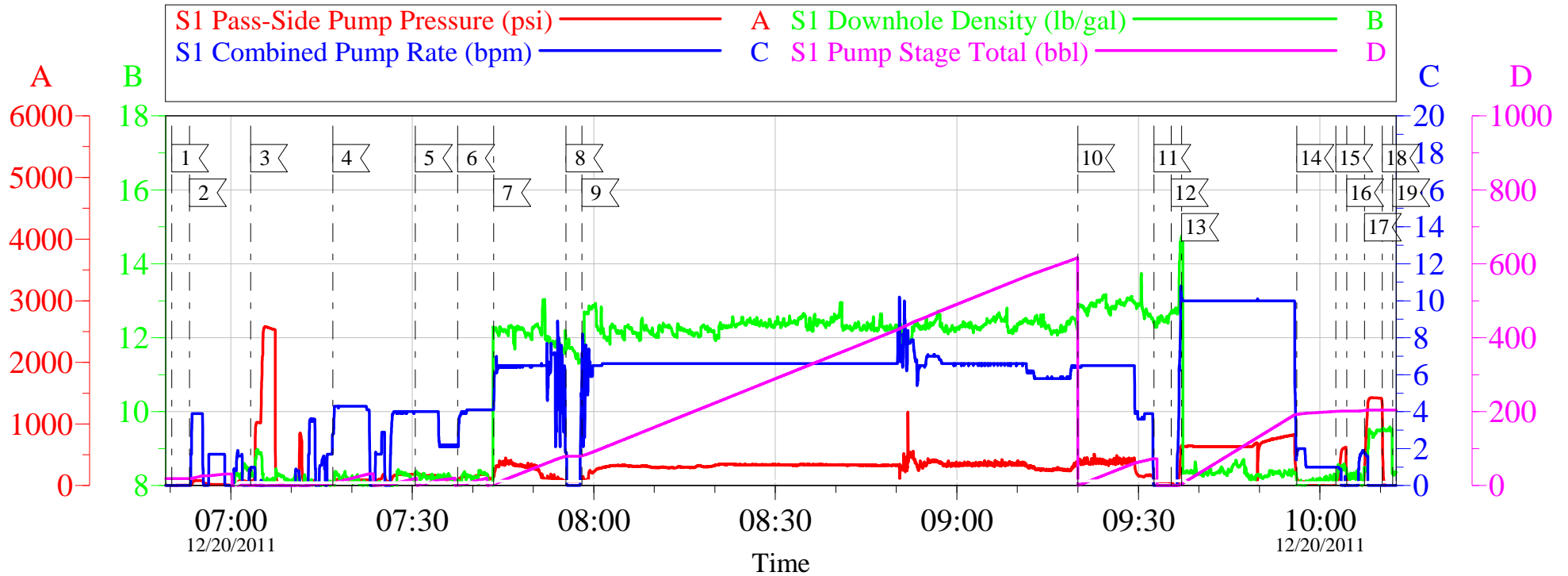
Location: Grand Junction, CO

NOTICE:

This report is limited to the described sample tested. Any person using or relying on this report agrees that Halliburton shall not be liable for any loss or damage whether due to act or omission resulting from such report c

OXY - CC-697-09-04B

9 5/8" SURFACE



Local Event Log		
1 START JOB	06:50:14	2 FILL LINES 06:53:10
3 PRESSURE TEST	07:03:18	4 START FRESH WATER SPACER 07:16:51
5 START GEL SPACER	07:30:29	6 START FRESHWATER SPACER 07:37:30
7 START LEAD CEMENT	07:43:28	8 SHUTDOWN 07:55:25
9 RESUME LEAD CEMENT	07:58:04	10 START TAIL CEEMENT 09:20:00
11 SHUTDOWN	09:32:35	12 DROP PLUG 09:35:26
13 START DISPLACEMENT	09:37:09	14 SLOWRATE 09:56:11
15 BUMP PLUG	10:02:36	16 CHECK FLOATS 10:04:25
17 PRESSURE TEST CASING	10:07:21	18 RELEASE PRESSURE 10:10:18
19 END JOB	10:12:02	

Customer: OXY
Well Description: CC 697-09-04B
Company Rep:

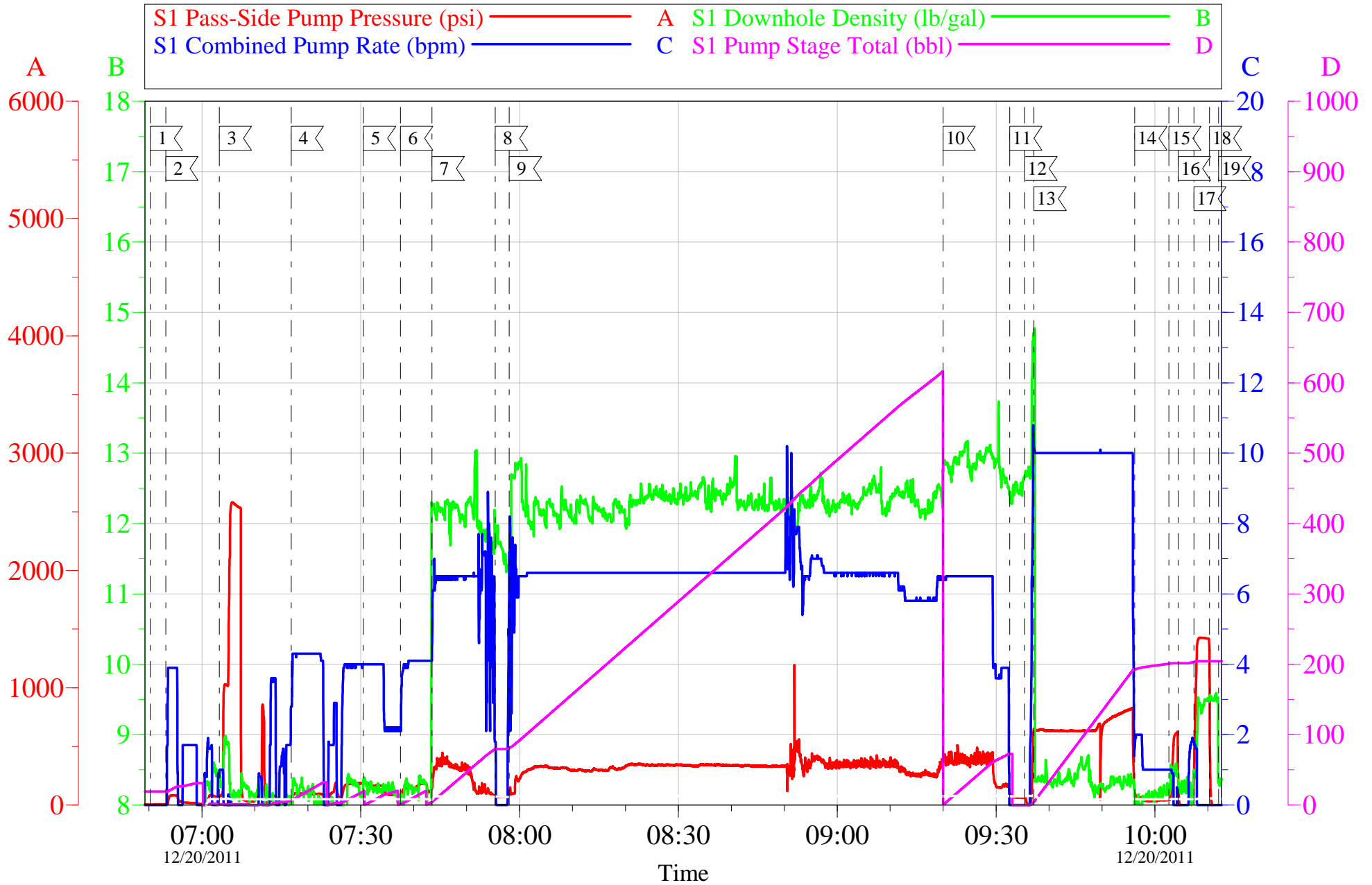
Job Date: 20-Dec-2011
Job Type: SURFACE
Cement Supervisor: MIKE TRIPLETT

Sales Order #: 8561202
ADC Used: YES
Elite #3: ERIC STILLSON

OptiCem v6.4.10
20-Dec-11 12:07

OXY - CC-697-09-04B

9 5/8" SURFACE

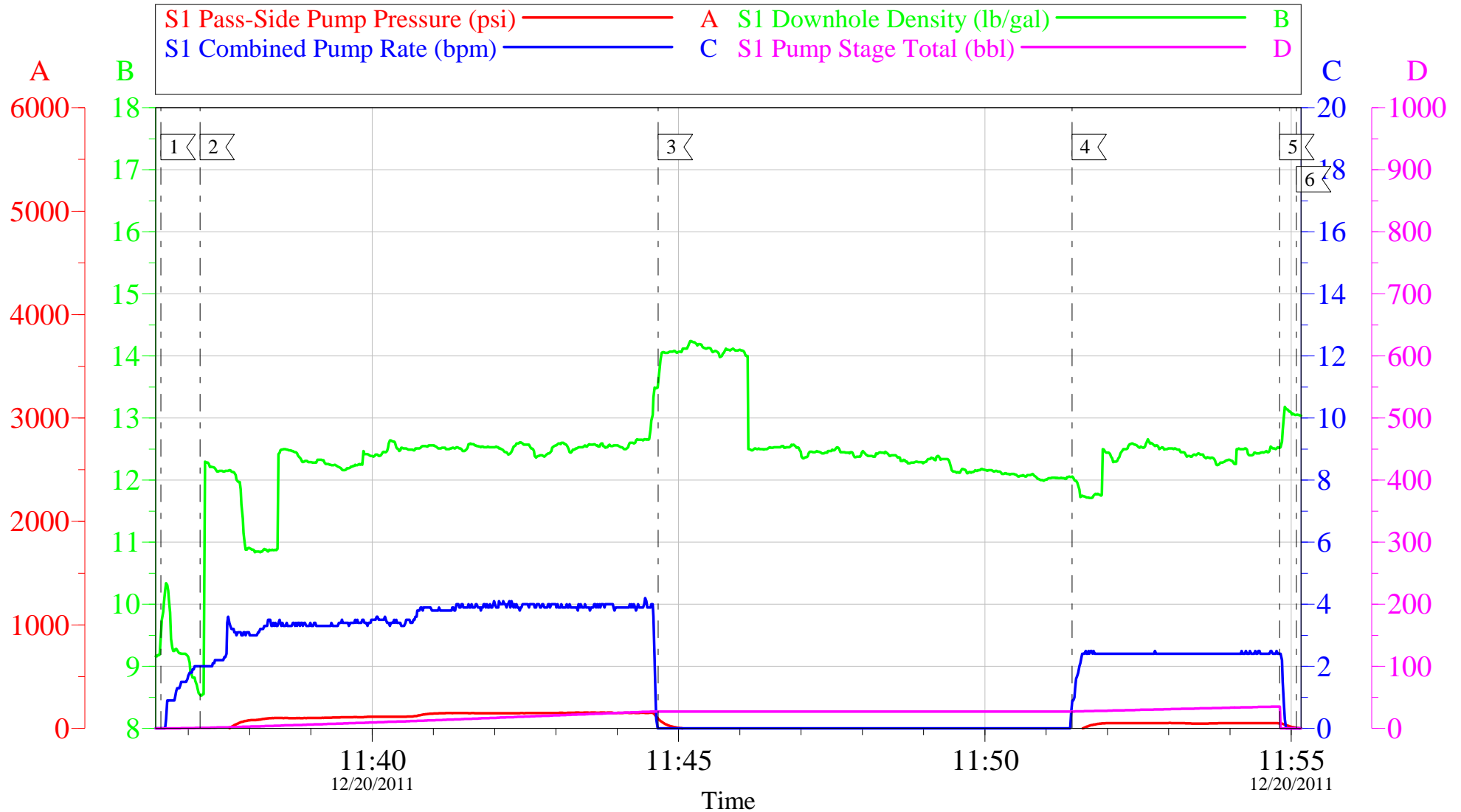


Customer: OXY	Job Date: 20-Dec-2011	Sales Order #: 8561202
Well Description: CC 697-09-04B	Job Type: SURFACE	ADC Used: YES
Company Rep:	Cement Supervisor: MIKE TRIPLETT	Elite #3: ERIC STILLSON

OptiCem v6.4.10
20-Dec-11 12:08

OXY - CC-697-09-04B

TOPOUT #1



Local Event Log

1 START TOPOUT 11:36:33	2 PUMP CEMENT 11:37:11	3 SHUTDOWN 11:44:40
4 PUMP TOPOUT 11:51:25	5 SHUTDOWN 11:54:49	6 END JOB 11:55:05

Customer: OXY
Well Description: CC 697-09-04B
Company Rep: VICTOR VENAVIDES

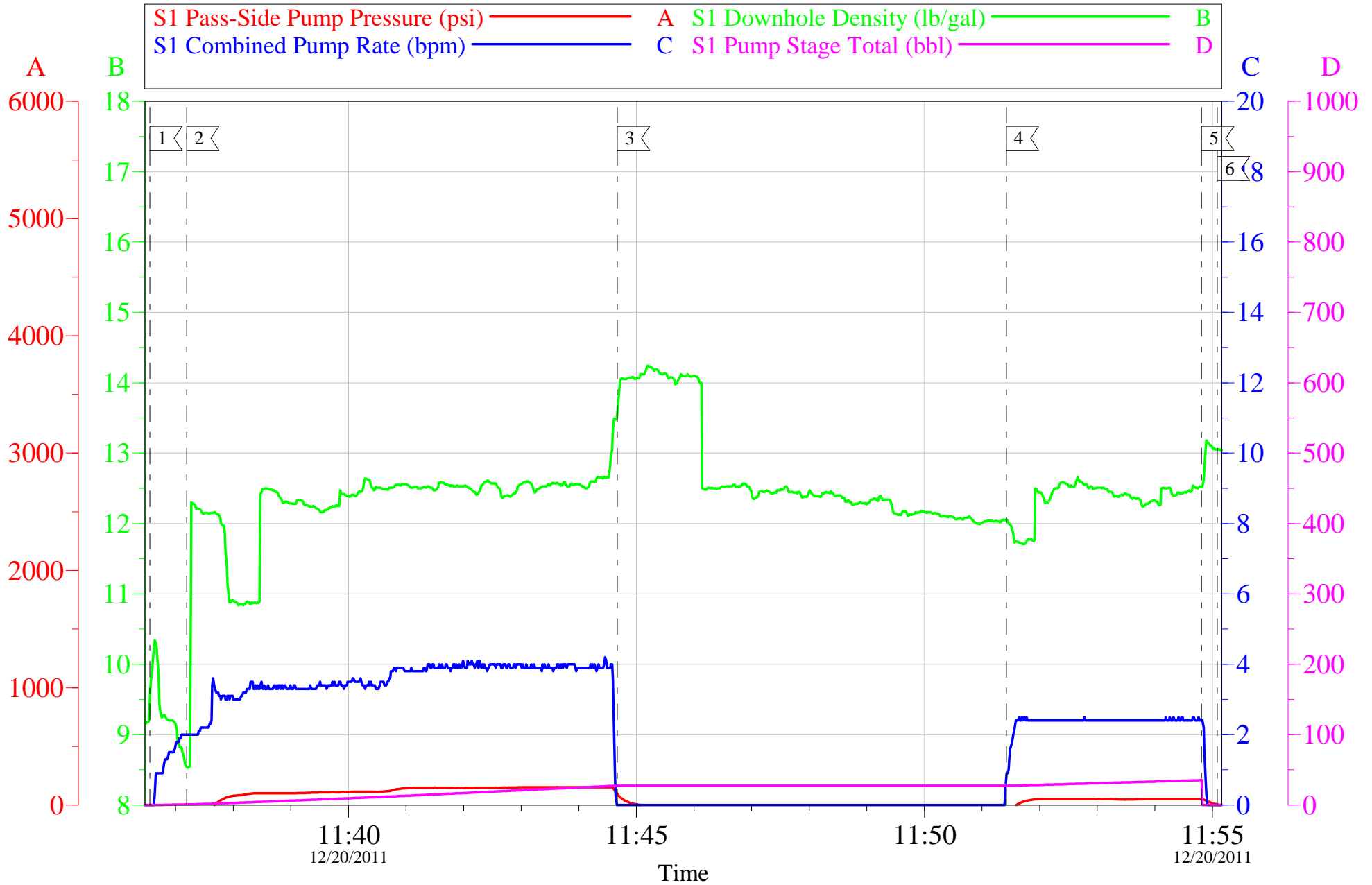
Job Date: 20-Dec-2011
Job Type: SURFACE
Cement Supervisor: MIKE TRIPLETT

Sales Order #: 8561202
ADC Used: YES
Elite #3: ERIC STILLSON

OptiCem v6.4.10
20-Dec-11 12:23

OXY - CC-697-09-04B

TOPOUT #1



Customer: OXY
Well Description: CC 697-09-04B
Company Rep: VICTOR VENA VITES

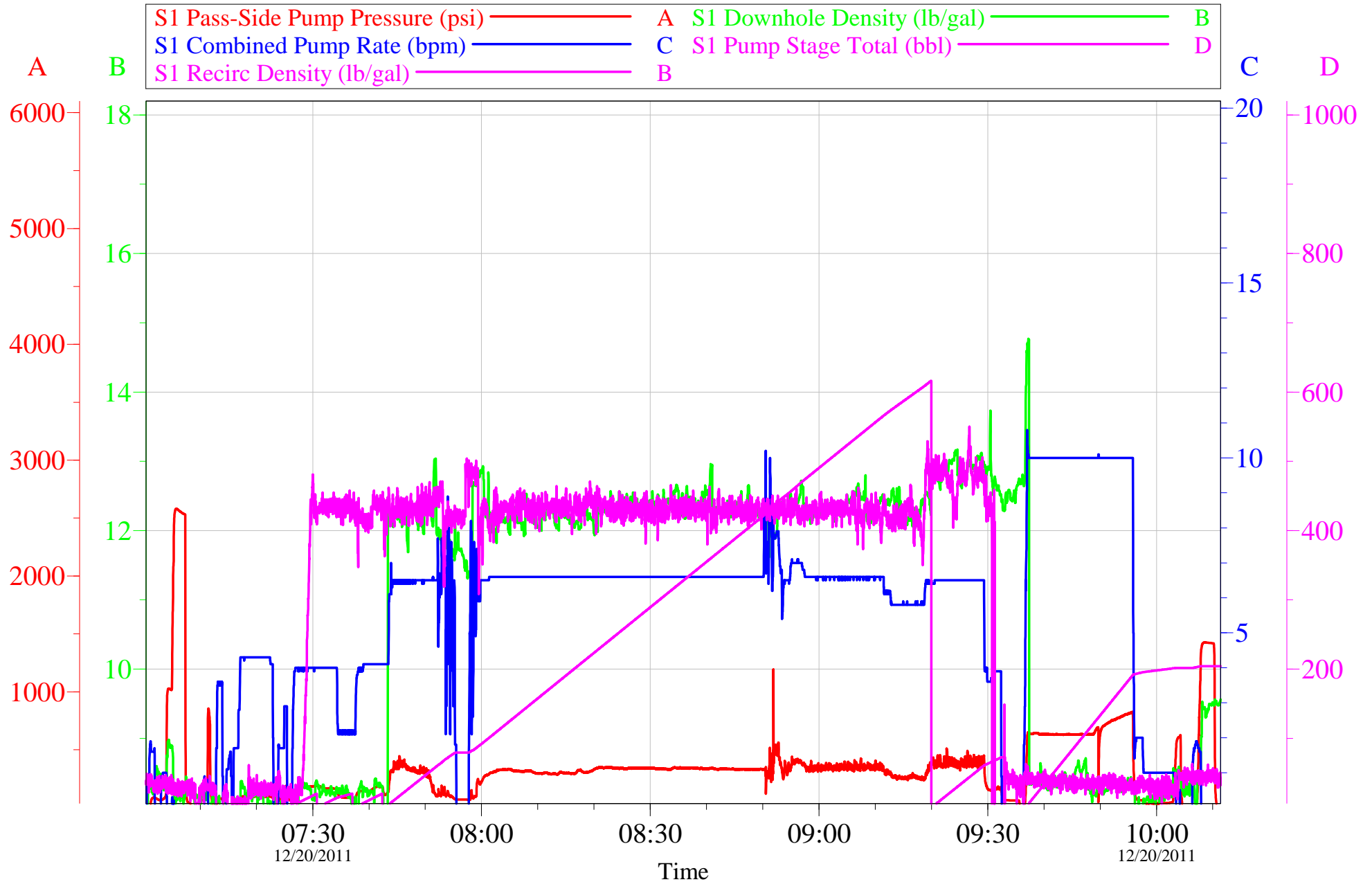
Job Date: 20-Dec-2011
Job Type: SURFACE
Cement Supervisor: MIKE TRIPLETT

Sales Order #: 8561202
ADC Used: YES
Elite #3: ERIC STILLSON

OptiCem v6.4.10
20-Dec-11 12:23

OXY - CC 697-09-04B

9 5/8 SURFACE



Customer:	OXY	Job Date:	20-Dec-2011	Sales Order #:	8561202
Well Description:	CC 697-09-04B	Job Type:	SURFACE	ADC Used:	YES
Company Rep:	VICTOR BENAVIDES	Cement Supervisor:	MIKE TRIPLETT	Elite #3:	ERIC STILLSON

OptiCem v6.4.10
20-Dec-11 13:36

Sales Order #: 8561202	Line Item: 10	Survey Conducted Date: 12/20/2011
Customer: OXY GRAND JUNCTION EBUSINESS		Job Type (BOM): CMT SURFACE CASING BOM
Customer Representative: VICTOR BENAVIDES		API / UWI: (leave blank if unknown) 05-045-70710
Well Name: CC		Well Number: 697-09-04B
Well Type: Development Well	Well Country: United States of America	
H2S Present:	Well State: Colorado	Well County: Garfield

Dear Customer,

We hope that you were satisfied with the service quality of this job performed by Halliburton. It is the aim of our management and service personnel to deliver equipment and service of a standard unmatched in the service sector of the energy industry.

Please take the time to let us know if our performance met with your satisfaction. Please be as critical as possible to ensure we constantly improve our service. Your comments are of great value to us and are intended for the exclusive use of Halliburton.

CUSTOMER SATISFACTION SURVEY

CATEGORY	CUSTOMER SATISFACTION RESPONSE	
Survey Conducted Date	The date the survey was conducted	12/20/2011
Survey Interviewer	The survey interviewer is the person who initiated the survey.	MICHEAL TRIPLETT (HB15721)
Customer Participation	Did the customer participate in this survey? (Y/N)	Yes
Customer Representative	Enter the Customer representative name	VICTOR BENAVIDES
HSE	Was our HSE performance satisfactory? Circle Y or N	Yes
Equipment	Were you satisfied with our Equipment? Circle Y or N	Yes
Personnel	Were you satisfied with our people? Circle Y or N	Yes
Customer Comment	Customer's Comment	

CUSTOMER SIGNATURE

Sales Order #: 8561202	Line Item: 10	Survey Conducted Date: 12/20/2011
Customer: OXY GRAND JUNCTION EBUSINESS		Job Type (BOM): CMT SURFACE CASING BOM
Customer Representative: VICTOR BENAVIDES		API / UWI: (leave blank if unknown) 05-045-70710
Well Name: CC		Well Number: 697-09-04B
Well Type: Development Well	Well Country: United States of America	
H2S Present:	Well State: Colorado	Well County: Garfield

KEY PERFORMANCE INDICATORS

General	
Survey Conducted Date	12/20/2011
The date the survey was conducted	

Cementing KPI Survey	
Type of Job	0
Select the type of job. (Cementing or Non-Cementing)	
Select the Maximum Deviation range for this Job	Vertical
What is the highest deviation for the job you just completed? This may not be the maximum well deviation.	
Total Operating Time (hours)	7
Total Operating Hours Including Rig-up, Pumping, Rig-down. Enter in decimal format.	
HSE Incident, Accident, Injury	No
HSE Incident, Accident, Injury. This should be recordable incidents only.	
Was the job purpose achieved?	Yes
Was the job delivered correctly as per customer agreed design?	
Operating Hours (Pumping Hours)	4
Total number of hours pumping fluid on this job. Enter in decimal format.	
Customer Non-Productive Rig Time (hrs)	0
Lost time due to Halliburton in the start, execution, or completion of an ordered service or product, or delays in a follow-on service. Enter in decimal format. 0 if none.	
Type of Rig Classification Job Was Performed	Drilling Rig (Portable)
Type Of Rig (classification) Job Was Performed On	
Number Of JSAs Performed	7
Number Of Jsas Performed	
Number of Unplanned Shutdowns	0
Unplanned shutdown is when injection stops for any period of time.	
Was this a Primary Cement Job (Yes / No)	Yes

Sales Order #: 8561202	Line Item: 10	Survey Conducted Date: 12/20/2011
Customer: OXY GRAND JUNCTION EBUSINESS		Job Type (BOM): CMT SURFACE CASING BOM
Customer Representative: VICTOR BENAVIDES		API / UWI: (leave blank if unknown) 05-045-70710
Well Name: CC		Well Number: 697-09-04B
Well Type: Development Well	Well Country: United States of America	
H2S Present:	Well State: Colorado	Well County: Garfield

Primary Cement Job= Casing job, Liner job, or Tie-back job.	
Did We Run Wiper Plugs? Did We Run Top And Bottom Casing Wiper Plugs?	Top
Mixing Density of Job Stayed in Designed Density Range (0-100%) Density Range defined as +/- .20 ppg. Calculation: Total BBLs cement mixed at designed density divided by total BBLs of cement multiplied by 100	95
Was Automated Density Control Used? Was Automated Density Control (ADC) Used ?	Yes
Pump Rate (percent) of Job Stayed At Designed Pump Rate Pump Rate range defined as +/- 1bbl/min. Calculation: Total BBLs of fluid pumped at the designed rate divided by Total BBLs of fluid pumped, multiplied by 100	95
Nbr of Remedial Sqz Jobs Rqd - Competition Number Of Remedial Squeeze Jobs Required After Primary Job Performed By Competition	0
Nbr of Remedial Plug Jobs Rqd - HES Number Of Remedial Plug Jobs Needed After Primary Plug Pumped By HES	0
Nbr of Remedial Sqz Jobs Rqd - HES Number Of Remedial Squeeze Jobs Required After Primary Job Performed By HES	0