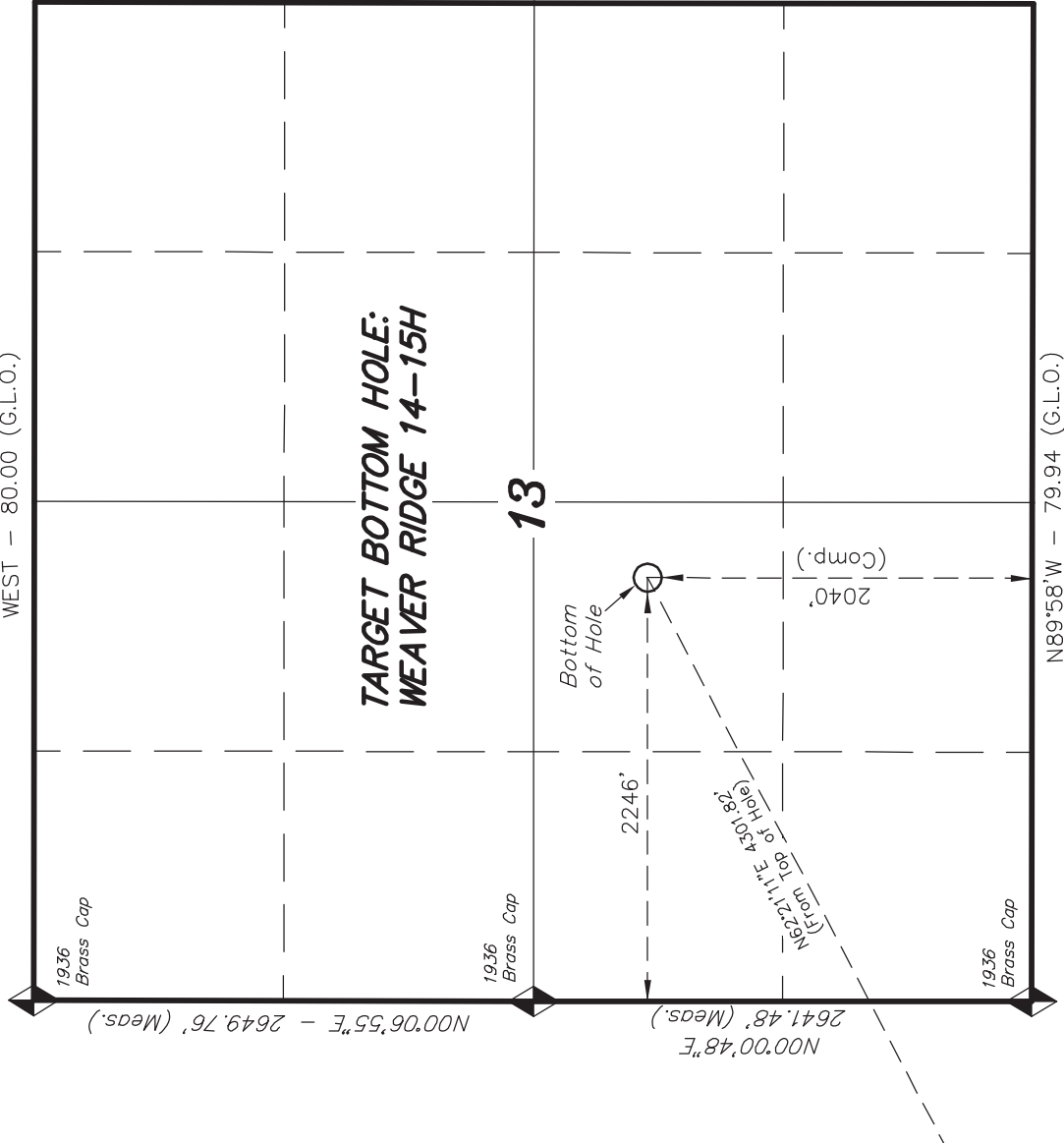


BASIS OF ELEV; U.S.G.S. 7-1/2
min QUAD (WEAVER RIDGE)

T1S, R104W, 6th P.M.

ROBERT L. BAYLESS PRODUCER LLC

WEST — 80.00 (G.L.O.)

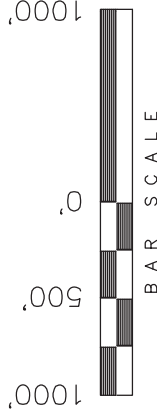


◆ = SECTION CORNERS LOCATED

BASIS OF ELEV; U.S.G.S. 7-1/2 min QUAD (WEAVER RIDGE)

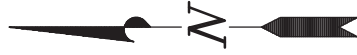
NAD 83 (BOTTOM HOLE LOCATION)	
LATITUDE	= 39°57'34.39" (39.959552)
LONGITUDE	= 109°01'06.82" (109.018562)

TARGET BOTTOM HOLE, WEAVER RIDGE 14-15H, LOCATED AS SHOWN IN THE NE 1/4 SW 1/4 OF SECTION 13, T1S, R104W, 6th P.M. RIO BLANCO COUNTY, COLORADO.



NOTES:

1. Well footages are measured at right angles to the Section Lines.
2. Bearings are based on Global Positioning Satellite observations.
3. The Bottom of Hole Bears S74°54'02"E 2326.17' from the West 1/4 Corner of Section 13.



THIS IS TO CERTIFY THAT THE ABOVE PLAT WAS PREPARED FROM FIELD NOTES OF ACTUAL SURVEYS MADE BY ME OR UNDER MY SUPERVISION AND THAT THE SAME ARE TRUE AND CORRECT TO THE BEST OF MY KNOWLEDGE AND BELIEF.

STACY W. STEWART
REGISTERED LAND SURVEYOR
REGISTRATION NO. 18883
STATE OF UTAH
03-29-12
BIN 6.189377

TRI STATE LAND SURVEYING & CONSULTING

180 NORTH VERNAL AVE. — VERNAL, UTAH 84078
(435) 781-2501

DATE SURVEYED: 12-15-11	SURVEYED BY: K.S.
DATE DRAWN: 12-29-11	DRAWN BY: M.W.
REVISED: L.C.S. 03-29-12	SCALE: 1" = 1000'