



Robert L. Bayless, Producer LLC.

Weaver Ridge 14-15H
Sec14 T01S R104W
Rio Blanco Co., CO

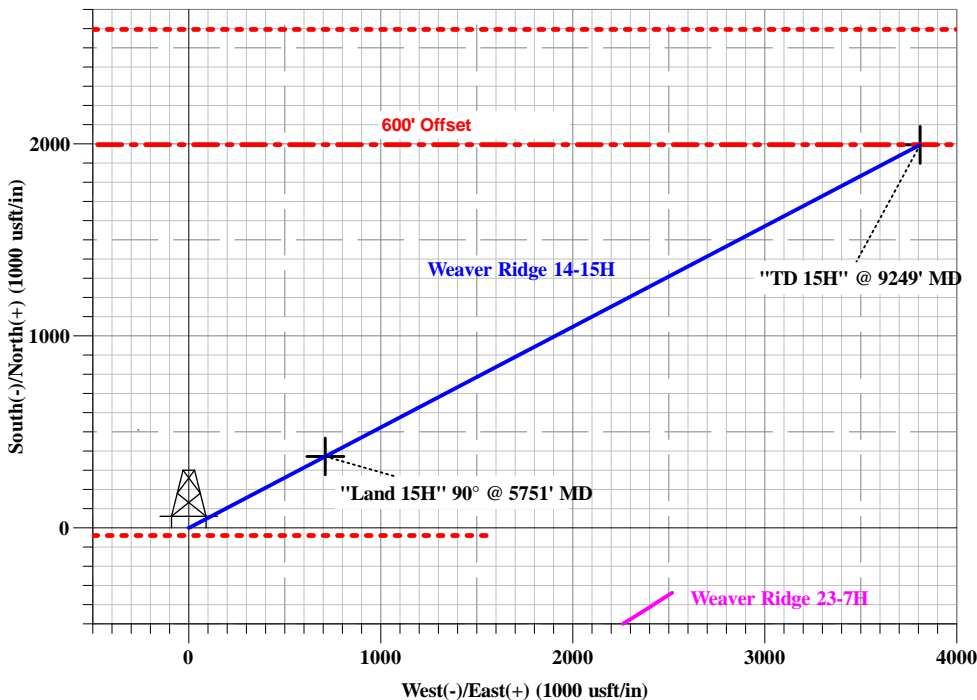
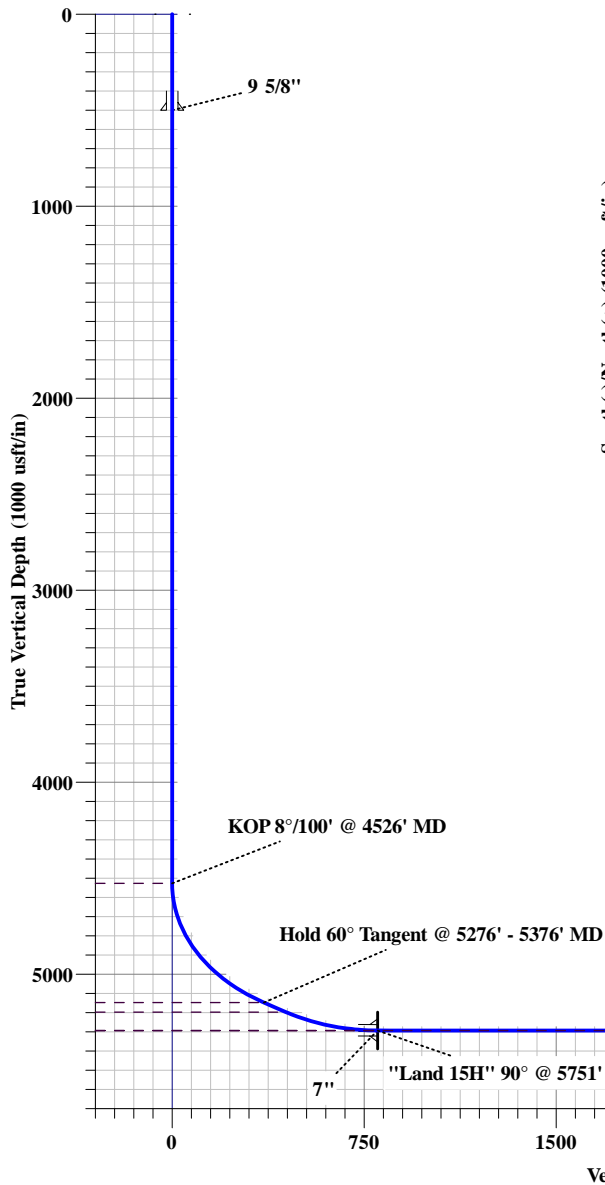
PATHFINDER
A Schlumberger Company

GE: 6703' / KB: 12'

CASING DETAILS		
TVD	MD	Name
500.0	500.0	9 5/8"
5293.0	5751.8	7"

DESIGN TARGET DETAILS

Name	TVD	+N/-S	+E/-W	Shape
BHL - 15H	5293.0	1995.4	3809.3	Point
Land - 15H	5293.0	372.5	711.1	Point



WELL DETAILS: Weaver Ridge 14-15H

Ground Level: 6703.0			
Northing	Easting	Latitude	Longitude
1245836.33	2010050.68	39° 57' 14.670 N	109° 1' 55.744 W

SECTION DETAILS									
MD	Inc	Azi	TVD	+N/-S	+E/-W	Dleg	TFace	VSect	Target
0.0	0.00	0.00	0.0	0.0	0.0	0.00	0.00	0.0	
4526.8	0.00	0.00	4526.8	0.0	0.0	0.00	0.00	0.0	
5276.8	60.00	62.35	5147.0	166.2	317.2	8.00	62.35	358.1	
5376.8	60.00	62.35	5197.0	206.4	393.9	0.00	0.00	444.7	
5751.8	90.00	62.35	5293.0	372.5	711.1	8.00	0.00	802.8	
9249.3	90.00	62.35	5293.0	1995.4	3809.3	0.00	0.00	4300.3	BHL - 15H

Plan: Design #5 (Weaver Ridge 14-15H/Wellbore #1)

Created By: Breck Enoch

Date: 28-Mar-2012



Robert L. Bayless, Producer LLC.

Rio Blanco Co., CO

Sec14 T01S R104W

Weaver Ridge 14-15H

Wellbore #1

Plan: Design #5

Standard Planning Report

28 March, 2012



Database:	EDM 5000.1 Single User Db	Local Co-ordinate Reference:	Well Weaver Ridge 14-15H
Company:	Robert L. Bayless, Producer LLC.	TVD Reference:	WELL @ 6715.0usft (Original Well Elev)
Project:	Rio Blanco Co., CO	MD Reference:	WELL @ 6715.0usft (Original Well Elev)
Site:	Sec14 T01S R104W	North Reference:	True
Well:	Weaver Ridge 14-15H	Survey Calculation Method:	Minimum Curvature
Wellbore:	Wellbore #1		
Design:	Design #5		

Project	Rio Blanco Co., CO		
Map System:	US State Plane 1983	System Datum:	Mean Sea Level
Geo Datum:	North American Datum 1983		
Map Zone:	Colorado Northern Zone		

Site		Sec14 T01S R104W			
Site Position:		Northing:	1,245,836.33 usft	Latitude:	39° 57' 14.670 N
From:	Lat/Long	Easting:	2,010,050.68 usft	Longitude:	109° 1' 55.744 W
Position Uncertainty:	0.0 usft	Slot Radius:	13-3/16 "	Grid Convergence:	-2.28

Well	Weaver Ridge 14-15H					
Well Position	+N/-S	0.0 usft	Northing:	1,245,836.33 usft	Latitude:	39° 57' 14.670 N
	+E/-W	0.0 usft	Easting:	2,010,050.68 usft	Longitude:	109° 1' 55.744 W
Position Uncertainty		0.0 usft	Wellhead Elevation:		Ground Level:	6,703.0 usft

Wellbore	Wellbore #1				
Magnetics	Model Name	Sample Date	Declination (°)	Dip Angle (°)	Field Strength (nT)
	IGRF2010	2012/02/01	10.79	65.90	52,291

Design	Design #5			
Audit Notes:				
Version:	Phase:	PROTOTYPE	Tie On Depth:	0.0
Vertical Section:	Depth From (TVD) (usft)	+N/-S (usft)	+E/-W (usft)	Direction (°)
	0.0	0.0	0.0	62.35

Plan Sections										
Measured Depth (usft)	Inclination (°)	Azimuth (°)	Vertical Depth (usft)	+N/-S (usft)	+E/-W (usft)	Dogleg Rate (°/100usft)	Build Rate (°/100usft)	Turn Rate (°/100usft)	TFO (°)	Target
0.0	0.00	0.00	0.0	0.0	0.0	0.00	0.00	0.00	0.00	
4,526.8	0.00	0.00	4,526.8	0.0	0.0	0.00	0.00	0.00	0.00	
5,276.8	60.00	62.35	5,147.0	166.2	317.2	8.00	8.00	0.00	62.35	
5,376.8	60.00	62.35	5,197.0	206.4	393.9	0.00	0.00	0.00	0.00	
5,751.8	90.00	62.35	5,293.0	372.5	711.1	8.00	8.00	0.00	0.00	
9,249.3	90.00	62.35	5,293.0	1,995.4	3,809.3	0.00	0.00	0.00	0.00	BHL - 15H



Database:	EDM 5000.1 Single User Db	Local Co-ordinate Reference:	Well Weaver Ridge 14-15H
Company:	Robert L. Bayless, Producer LLC.	TVD Reference:	WELL @ 6715.0usft (Original Well Elev)
Project:	Rio Blanco Co., CO	MD Reference:	WELL @ 6715.0usft (Original Well Elev)
Site:	Sec14 T01S R104W	North Reference:	True
Well:	Weaver Ridge 14-15H	Survey Calculation Method:	Minimum Curvature
Wellbore:	Wellbore #1		
Design:	Design #5		

Planned Survey									
Measured Depth (usft)	Inclination (°)	Azimuth (°)	Vertical Depth (usft)	+N/-S (usft)	+E/-W (usft)	Vertical Section (usft)	Dogleg Rate (°/100usft)	Build Rate (°/100usft)	Turn Rate (°/100usft)
0.0	0.00	0.00	0.0	0.0	0.0	0.0	0.00	0.00	0.00
12.0	0.00	0.00	12.0	0.0	0.0	0.0	0.00	0.00	0.00
Green River									
100.0	0.00	0.00	100.0	0.0	0.0	0.0	0.00	0.00	0.00
200.0	0.00	0.00	200.0	0.0	0.0	0.0	0.00	0.00	0.00
300.0	0.00	0.00	300.0	0.0	0.0	0.0	0.00	0.00	0.00
400.0	0.00	0.00	400.0	0.0	0.0	0.0	0.00	0.00	0.00
500.0	0.00	0.00	500.0	0.0	0.0	0.0	0.00	0.00	0.00
9 5/8"									
600.0	0.00	0.00	600.0	0.0	0.0	0.0	0.00	0.00	0.00
700.0	0.00	0.00	700.0	0.0	0.0	0.0	0.00	0.00	0.00
800.0	0.00	0.00	800.0	0.0	0.0	0.0	0.00	0.00	0.00
900.0	0.00	0.00	900.0	0.0	0.0	0.0	0.00	0.00	0.00
1,000.0	0.00	0.00	1,000.0	0.0	0.0	0.0	0.00	0.00	0.00
1,100.0	0.00	0.00	1,100.0	0.0	0.0	0.0	0.00	0.00	0.00
1,200.0	0.00	0.00	1,200.0	0.0	0.0	0.0	0.00	0.00	0.00
1,300.0	0.00	0.00	1,300.0	0.0	0.0	0.0	0.00	0.00	0.00
1,400.0	0.00	0.00	1,400.0	0.0	0.0	0.0	0.00	0.00	0.00
1,500.0	0.00	0.00	1,500.0	0.0	0.0	0.0	0.00	0.00	0.00
1,600.0	0.00	0.00	1,600.0	0.0	0.0	0.0	0.00	0.00	0.00
1,700.0	0.00	0.00	1,700.0	0.0	0.0	0.0	0.00	0.00	0.00
1,800.0	0.00	0.00	1,800.0	0.0	0.0	0.0	0.00	0.00	0.00
1,900.0	0.00	0.00	1,900.0	0.0	0.0	0.0	0.00	0.00	0.00
2,000.0	0.00	0.00	2,000.0	0.0	0.0	0.0	0.00	0.00	0.00
2,001.0	0.00	0.00	2,001.0	0.0	0.0	0.0	0.00	0.00	0.00
Wasatch									
2,100.0	0.00	0.00	2,100.0	0.0	0.0	0.0	0.00	0.00	0.00
2,200.0	0.00	0.00	2,200.0	0.0	0.0	0.0	0.00	0.00	0.00
2,300.0	0.00	0.00	2,300.0	0.0	0.0	0.0	0.00	0.00	0.00
2,400.0	0.00	0.00	2,400.0	0.0	0.0	0.0	0.00	0.00	0.00
2,418.0	0.00	0.00	2,418.0	0.0	0.0	0.0	0.00	0.00	0.00
MesaVerde									
2,500.0	0.00	0.00	2,500.0	0.0	0.0	0.0	0.00	0.00	0.00
2,600.0	0.00	0.00	2,600.0	0.0	0.0	0.0	0.00	0.00	0.00
2,700.0	0.00	0.00	2,700.0	0.0	0.0	0.0	0.00	0.00	0.00
2,800.0	0.00	0.00	2,800.0	0.0	0.0	0.0	0.00	0.00	0.00
2,900.0	0.00	0.00	2,900.0	0.0	0.0	0.0	0.00	0.00	0.00
3,000.0	0.00	0.00	3,000.0	0.0	0.0	0.0	0.00	0.00	0.00
3,100.0	0.00	0.00	3,100.0	0.0	0.0	0.0	0.00	0.00	0.00
3,200.0	0.00	0.00	3,200.0	0.0	0.0	0.0	0.00	0.00	0.00
3,300.0	0.00	0.00	3,300.0	0.0	0.0	0.0	0.00	0.00	0.00
3,400.0	0.00	0.00	3,400.0	0.0	0.0	0.0	0.00	0.00	0.00
3,500.0	0.00	0.00	3,500.0	0.0	0.0	0.0	0.00	0.00	0.00
3,509.0	0.00	0.00	3,509.0	0.0	0.0	0.0	0.00	0.00	0.00
Upper Sego									
3,600.0	0.00	0.00	3,600.0	0.0	0.0	0.0	0.00	0.00	0.00
3,700.0	0.00	0.00	3,700.0	0.0	0.0	0.0	0.00	0.00	0.00
3,713.0	0.00	0.00	3,713.0	0.0	0.0	0.0	0.00	0.00	0.00
Lower Sego									
3,782.0	0.00	0.00	3,782.0	0.0	0.0	0.0	0.00	0.00	0.00
Buck Tongue									
3,800.0	0.00	0.00	3,800.0	0.0	0.0	0.0	0.00	0.00	0.00
3,900.0	0.00	0.00	3,900.0	0.0	0.0	0.0	0.00	0.00	0.00



Database:	EDM 5000.1 Single User Db	Local Co-ordinate Reference:	Well Weaver Ridge 14-15H
Company:	Robert L. Bayless, Producer LLC.	TVD Reference:	WELL @ 6715.0usft (Original Well Elev)
Project:	Rio Blanco Co., CO	MD Reference:	WELL @ 6715.0usft (Original Well Elev)
Site:	Sec14 T01S R104W	North Reference:	True
Well:	Weaver Ridge 14-15H	Survey Calculation Method:	Minimum Curvature
Wellbore:	Wellbore #1		
Design:	Design #5		

Planned Survey									
Measured Depth (usft)	Inclination (°)	Azimuth (°)	Vertical Depth (usft)	+N/-S (usft)	+E/-W (usft)	Vertical Section (usft)	Dogleg Rate (°/100usft)	Build Rate (°/100usft)	Turn Rate (°/100usft)
4,000.0	0.00	0.00	4,000.0	0.0	0.0	0.0	0.00	0.00	0.00
4,007.0	0.00	0.00	4,007.0	0.0	0.0	0.0	0.00	0.00	0.00
Castlegate									
4,100.0	0.00	0.00	4,100.0	0.0	0.0	0.0	0.00	0.00	0.00
4,137.0	0.00	0.00	4,137.0	0.0	0.0	0.0	0.00	0.00	0.00
Mancos									
4,200.0	0.00	0.00	4,200.0	0.0	0.0	0.0	0.00	0.00	0.00
4,300.0	0.00	0.00	4,300.0	0.0	0.0	0.0	0.00	0.00	0.00
4,400.0	0.00	0.00	4,400.0	0.0	0.0	0.0	0.00	0.00	0.00
4,500.0	0.00	0.00	4,500.0	0.0	0.0	0.0	0.00	0.00	0.00
4,526.8	0.00	0.00	4,526.8	0.0	0.0	0.0	0.00	0.00	0.00
KOP 8°/100' @ 4526' MD									
4,550.0	1.86	62.35	4,550.0	0.2	0.3	0.4	8.00	8.00	0.00
4,600.0	5.86	62.35	4,599.9	1.7	3.3	3.7	8.00	8.00	0.00
4,650.0	9.86	62.35	4,649.4	4.9	9.4	10.6	8.00	8.00	0.00
4,700.0	13.86	62.35	4,698.3	9.7	18.5	20.8	8.00	8.00	0.00
4,750.0	17.86	62.35	4,746.4	16.0	30.6	34.5	8.00	8.00	0.00
4,800.0	21.86	62.35	4,793.4	23.9	45.6	51.5	8.00	8.00	0.00
4,850.0	25.86	62.35	4,839.1	33.3	63.5	71.7	8.00	8.00	0.00
4,900.0	29.86	62.35	4,883.3	44.1	84.2	95.1	8.00	8.00	0.00
4,940.6	33.11	62.35	4,918.0	54.0	103.0	116.3	8.00	8.00	0.00
Mancos A									
4,950.0	33.86	62.35	4,925.8	56.3	107.6	121.4	8.00	8.00	0.00
5,000.0	37.86	62.35	4,966.3	69.9	133.5	150.7	8.00	8.00	0.00
5,050.0	41.86	62.35	5,004.7	84.8	161.9	182.8	8.00	8.00	0.00
5,100.0	45.86	62.35	5,040.7	100.9	192.6	217.4	8.00	8.00	0.00
5,150.0	49.86	62.35	5,074.3	118.1	225.4	254.5	8.00	8.00	0.00
5,200.0	53.86	62.35	5,105.2	136.3	260.2	293.8	8.00	8.00	0.00
5,250.0	57.86	62.35	5,133.2	155.5	296.9	335.1	8.00	8.00	0.00
5,276.8	60.00	62.35	5,147.0	166.2	317.2	358.1	8.00	8.00	0.00
Hold 60° Tangent @ 5276' - 5376' MD									
5,284.7	60.00	62.35	5,151.0	169.3	323.3	364.9	0.00	0.00	0.00
Mancos B									
5,300.0	60.00	62.35	5,158.6	175.5	335.0	378.2	0.00	0.00	0.00
5,376.8	60.00	62.35	5,197.0	206.4	393.9	444.7	0.00	0.00	0.00
Build 8°/100' @ 5376' MD									
5,400.0	61.86	62.35	5,208.3	215.8	411.9	465.0	8.00	8.00	0.00
5,450.0	65.86	62.35	5,230.3	236.6	451.6	509.9	8.00	8.00	0.00
5,500.0	69.86	62.35	5,249.2	258.1	492.7	556.2	8.00	8.00	0.00
5,550.0	73.86	62.35	5,264.8	280.1	534.7	603.7	8.00	8.00	0.00
5,565.9	75.13	62.35	5,269.0	287.2	548.3	618.9	8.00	8.00	0.00
MnB Basal SS									
5,600.0	77.86	62.35	5,277.0	302.6	577.7	652.1	8.00	8.00	0.00
5,650.0	81.86	62.35	5,285.8	325.4	621.3	701.3	8.00	8.00	0.00
5,700.0	85.86	62.35	5,291.1	348.5	665.3	751.0	8.00	8.00	0.00
5,714.0	86.97	62.35	5,292.0	355.0	677.6	765.0	8.00	8.00	0.00
Target									
5,751.8	90.00	62.35	5,293.0	372.5	711.1	802.8	8.00	8.00	0.00
"Land 15H" 90° @ 5751' MD - 7"									
5,800.0	90.00	62.35	5,293.0	394.9	753.8	851.0	0.00	0.00	0.00
5,900.0	90.00	62.35	5,293.0	441.3	842.4	951.0	0.00	0.00	0.00
6,000.0	90.00	62.35	5,293.0	487.7	931.0	1,051.0	0.00	0.00	0.00
6,100.0	90.00	62.35	5,293.0	534.1	1,019.6	1,151.0	0.00	0.00	0.00



Database:	EDM 5000.1 Single User Db	Local Co-ordinate Reference:	Well Weaver Ridge 14-15H
Company:	Robert L. Bayless, Producer LLC.	TVD Reference:	WELL @ 6715.0usft (Original Well Elev)
Project:	Rio Blanco Co., CO	MD Reference:	WELL @ 6715.0usft (Original Well Elev)
Site:	Sec14 T01S R104W	North Reference:	True
Well:	Weaver Ridge 14-15H	Survey Calculation Method:	Minimum Curvature
Wellbore:	Wellbore #1		
Design:	Design #5		

Planned Survey										
Measured Depth (usft)	Inclination (°)	Azimuth (°)	Vertical Depth (usft)	+N/-S (usft)	+E/-W (usft)	Vertical Section (usft)	Dogleg Rate (°/100usft)	Build Rate (°/100usft)	Turn Rate (°/100usft)	
6,200.0	90.00	62.35	5,293.0	580.5	1,108.2	1,251.0	0.00	0.00	0.00	
6,300.0	90.00	62.35	5,293.0	626.9	1,196.7	1,351.0	0.00	0.00	0.00	
6,400.0	90.00	62.35	5,293.0	673.3	1,285.3	1,451.0	0.00	0.00	0.00	
6,500.0	90.00	62.35	5,293.0	719.7	1,373.9	1,551.0	0.00	0.00	0.00	
6,600.0	90.00	62.35	5,293.0	766.1	1,462.5	1,651.0	0.00	0.00	0.00	
6,700.0	90.00	62.35	5,293.0	812.5	1,551.1	1,751.0	0.00	0.00	0.00	
6,800.0	90.00	62.35	5,293.0	858.9	1,639.7	1,851.0	0.00	0.00	0.00	
6,900.0	90.00	62.35	5,293.0	905.3	1,728.2	1,951.0	0.00	0.00	0.00	
7,000.0	90.00	62.35	5,293.0	951.7	1,816.8	2,051.0	0.00	0.00	0.00	
7,100.0	90.00	62.35	5,293.0	998.1	1,905.4	2,151.0	0.00	0.00	0.00	
7,200.0	90.00	62.35	5,293.0	1,044.5	1,994.0	2,251.0	0.00	0.00	0.00	
7,300.0	90.00	62.35	5,293.0	1,090.9	2,082.6	2,351.0	0.00	0.00	0.00	
7,400.0	90.00	62.35	5,293.0	1,137.3	2,171.2	2,451.0	0.00	0.00	0.00	
7,500.0	90.00	62.35	5,293.0	1,183.7	2,259.7	2,551.0	0.00	0.00	0.00	
7,600.0	90.00	62.35	5,293.0	1,230.1	2,348.3	2,651.0	0.00	0.00	0.00	
7,700.0	90.00	62.35	5,293.0	1,276.5	2,436.9	2,751.0	0.00	0.00	0.00	
7,800.0	90.00	62.35	5,293.0	1,322.9	2,525.5	2,851.0	0.00	0.00	0.00	
7,900.0	90.00	62.35	5,293.0	1,369.3	2,614.1	2,951.0	0.00	0.00	0.00	
8,000.0	90.00	62.35	5,293.0	1,415.7	2,702.6	3,051.0	0.00	0.00	0.00	
8,100.0	90.00	62.35	5,293.0	1,462.1	2,791.2	3,151.0	0.00	0.00	0.00	
8,200.0	90.00	62.35	5,293.0	1,508.5	2,879.8	3,251.0	0.00	0.00	0.00	
8,300.0	90.00	62.35	5,293.0	1,554.9	2,968.4	3,351.0	0.00	0.00	0.00	
8,400.0	90.00	62.35	5,293.0	1,601.3	3,057.0	3,451.0	0.00	0.00	0.00	
8,500.0	90.00	62.35	5,293.0	1,647.7	3,145.6	3,551.0	0.00	0.00	0.00	
8,600.0	90.00	62.35	5,293.0	1,694.1	3,234.1	3,651.0	0.00	0.00	0.00	
8,700.0	90.00	62.35	5,293.0	1,740.5	3,322.7	3,751.0	0.00	0.00	0.00	
8,800.0	90.00	62.35	5,293.0	1,786.9	3,411.3	3,851.0	0.00	0.00	0.00	
8,900.0	90.00	62.35	5,293.0	1,833.3	3,499.9	3,951.0	0.00	0.00	0.00	
9,000.0	90.00	62.35	5,293.0	1,879.8	3,588.5	4,051.0	0.00	0.00	0.00	
9,100.0	90.00	62.35	5,293.0	1,926.2	3,677.1	4,151.0	0.00	0.00	0.00	
9,200.0	90.00	62.35	5,293.0	1,972.6	3,765.6	4,251.0	0.00	0.00	0.00	
9,249.3	90.00	62.35	5,293.0	1,995.4	3,809.3	4,300.3	0.00	0.00	0.00	

Design Targets										
Target Name - hit/miss target - Shape	Dip Angle (°)	Dip Dir. (°)	TVD (usft)	+N/-S (usft)	+E/-W (usft)	Northing (usft)	Easting (usft)	Latitude Longitude		
BHL - 15H - plan hits target center - Point	0.00	0.00	5,293.0	1,995.4	3,809.3	1,247,678.47	2,013,936.38	39° 57' 34.387 N		109° 1' 6.823 W
Land - 15H - plan hits target center - Point	0.00	0.00	5,293.0	372.5	711.1	1,246,180.22	2,010,776.05	39° 57' 18.351 N		109° 1' 46.612 W



Database:	EDM 5000.1 Single User Db	Local Co-ordinate Reference:	Well Weaver Ridge 14-15H
Company:	Robert L. Bayless, Producer LLC.	TVD Reference:	WELL @ 6715.0usft (Original Well Elev)
Project:	Rio Blanco Co., CO	MD Reference:	WELL @ 6715.0usft (Original Well Elev)
Site:	Sec14 T01S R104W	North Reference:	True
Well:	Weaver Ridge 14-15H	Survey Calculation Method:	Minimum Curvature
Wellbore:	Wellbore #1		
Design:	Design #5		

Casing Points					
Measured Depth (usft)	Vertical Depth (usft)	Name	Casing Diameter (")	Hole Diameter (")	
500.0	500.0	9 5/8"	9-5/8	12-1/4	
5,751.8	5,293.0	7"	7	8-3/4	

Formations						
Measured Depth (usft)	Vertical Depth (usft)	Name	Lithology	Dip (°)	Dip Direction (°)	
12.0	12.0	Green River		0.00		
2,001.0	2,001.0	Wasatch		0.00		
2,418.0	2,418.0	MesaVerde		0.00		
3,509.0	3,509.0	Upper Sego		0.00		
3,713.0	3,713.0	Lower Sego		0.00		
3,782.0	3,782.0	Buck Tongue		0.00		
4,007.0	4,007.0	Castlegate		0.00		
4,137.0	4,137.0	Mancos		0.00		
4,940.6	4,918.0	Mancos A		0.00		
5,284.7	5,151.0	Mancos B		0.00		
5,565.9	5,269.0	MnB Basal SS		0.00		
5,714.0	5,292.0	Target		0.00		

Plan Annotations					
Measured Depth (usft)	Vertical Depth (usft)	Local Coordinates			
		+N/-S (usft)	+E/-W (usft)	Comment	
4,526.8	4,526.8	0.0	0.0	KOP 8°/100' @ 4526' MD	
5,276.8	5,147.0	166.2	317.2	Hold 60° Tangent @ 5276' - 5376' MD	
5,376.8	5,197.0	206.4	393.9	Build 8°/100' @ 5376' MD	
5,751.8	5,293.0	372.5	711.1	"Land 15H" 90° @ 5751' MD	
9,249.3	5,293.0	1,995.4	3,809.3	"TD 15H" @ 9249' MD	