

## The Road to Excellence Starts with Safety

Sold To #: 304535	Ship To #: 2314229	Quote #:	Sales Order #: 9334253
Customer: PDC ENERGY EBUS		Customer Rep: SAILORS, CHAD	
Well Name: Kreps Trust	Well #: 34-6	API/UWI #: 05-123-21723	
Field: WATTENBERG	City (SAP): KERSEY	County/Parish: Weld	State: Colorado
Lat: N 40.509 deg. OR N 40 deg. 30 min. 32.4 secs.	Long: W 104.59 deg. OR W -105 deg. 24 min. 36.792 secs.		
Job Purpose: Recement Service			
Well Type: Development Well	Job Type: Recement Service		
Sales Person: FLING, MATTHEW	Srv Supervisor: SNYDER, JONATHAN	MBU ID Emp #: 435616	

## Job Personnel

HES Emp Name	Exp Hrs	Emp #	HES Emp Name	Exp Hrs	Emp #	HES Emp Name	Exp Hrs	Emp #
MARKOVICH, STEVEN Michael	5.0	502964	MEADOWS, DANIEL Graham	5.0	500668	SNYDER, JONATHAN Leroy	5.0	435616
WILEY, JAMES A	5.0	440080						

## Equipment

HES Unit #	Distance-1 way	HES Unit #	Distance-1 way	HES Unit #	Distance-1 way	HES Unit #	Distance-1 way
10867419C	48 mile	11036301	48 mile	11362287C	48 mile	11518548	48 mile
11562562	48 mile						

## Job Hours

Date	On Location Hours	Operating Hours	Date	On Location Hours	Operating Hours	Date	On Location Hours	Operating Hours
3/5/2012	5	2						
TOTAL			Total is the sum of each column separately					

## Job

Formation Name	Formation Depth (MD)	Top	Bottom	Form Type	Job depth MD	Job Depth TVD	Wk Ht Above Floor	Perforation Depth (MD)	From	To	Called Out	Date	Time	Time Zone
				BHST	3150. ft	3096. ft	4. ft				On Location	05 - Mar - 2012	07:00	MST
											Job Started	05 - Mar - 2012	08:51	MST
											Job Completed	05 - Mar - 2012	11:10	MST
											Departed Loc	05 - Mar - 2012	12:00	MST

## Well Data

Description	New / Used	Max pressure psig	Size in	ID in	Weight lbm/ft	Thread	Grade	Top MD ft	Bottom MD ft	Top TVD ft	Bottom TVD ft
Open Hole				12.				449.	2500.		
Production Casing	Used		4.5	4.052	10.5		J-55	.	8450.		
Surface Casing	Used		8.625	8.097	24.		J-55	.	449.		
TUBING	Unknown		1.25	.671	3.02			.	3150.		

## Tools and Accessories

Type	Size	Qty	Make	Depth	Type	Size	Qty	Make	Depth	Type	Size	Qty	Make
Guide Shoe					Packer					Top Plug			
Float Shoe					Bridge Plug					Bottom Plug			
Float Collar					Retainer					SSR plug set			
Insert Float										Plug Container			
Stage Tool										Centralizers			

## Miscellaneous Materials

Gelling Agt	Conc	Surfactant	Conc	Acid Type	Qty	Conc	%
Treatment Fld	Conc	Inhibitor	Conc	Sand Type	Size	Qty	

## Fluid Data

Stage/Plug #: 1	Fluid #	Stage Type	Fluid Name	Qty	Qty uom	Mixing Density lbm/gal	Yield ft <sup>3</sup> /sk	Mix Fluid Gal/sk	Rate bbl/min	Total Mix Fluid Gal/sk
-----------------	---------	------------	------------	-----	---------	------------------------	---------------------------	------------------	--------------	------------------------

**HALLIBURTON****Cementing Job Summary**

	ClayWeb Water Spacer			bbl	8.33	.0	.0	2.0	
2	MUD FLUSH III	MUD FLUSH III - SBM (528788)		bbl	8.4	.0	.0	2.0	
3	ClayWeb Water Spacer			bbl	8.33	.0	.0	2.0	
	59.525 gal/Mgal	CLA-WEB - TOTE (101985045)							
4	Varicem 12#	VARICEM (TM) CEMENT (452009)		sacks	12.	2.18	12.34	2.0	12.34
	12.34 Gal	FRESH WATER							
<b>Calculated Values</b>		<b>Pressures</b>		<b>Volumes</b>					
Displacement	3	Shut In: Instant		Lost Returns		Cement Slurry	180	Pad	
Top Of Cement	0	5 Min		Cement Returns	17	Actual Displacement	3	Treatment	
Frac Gradient		15 Min		Spacers	32	Load and Breakdown		Total Job	
<b>Rates</b>									
Circulating	2	Mixing	2	Displacement	2	Avg. Job	2		
Cement Left In Pipe	Amount 0 ft	Reason	Shoe Joint						
Frac Ring # 1 @	ID	Frac ring # 2 @	ID	Frac Ring # 3 @	ID	Frac Ring # 4 @	ID		
The Information Stated Herein Is Correct				Customer Representative Signature					

**The Road to Excellence Starts with Safety**

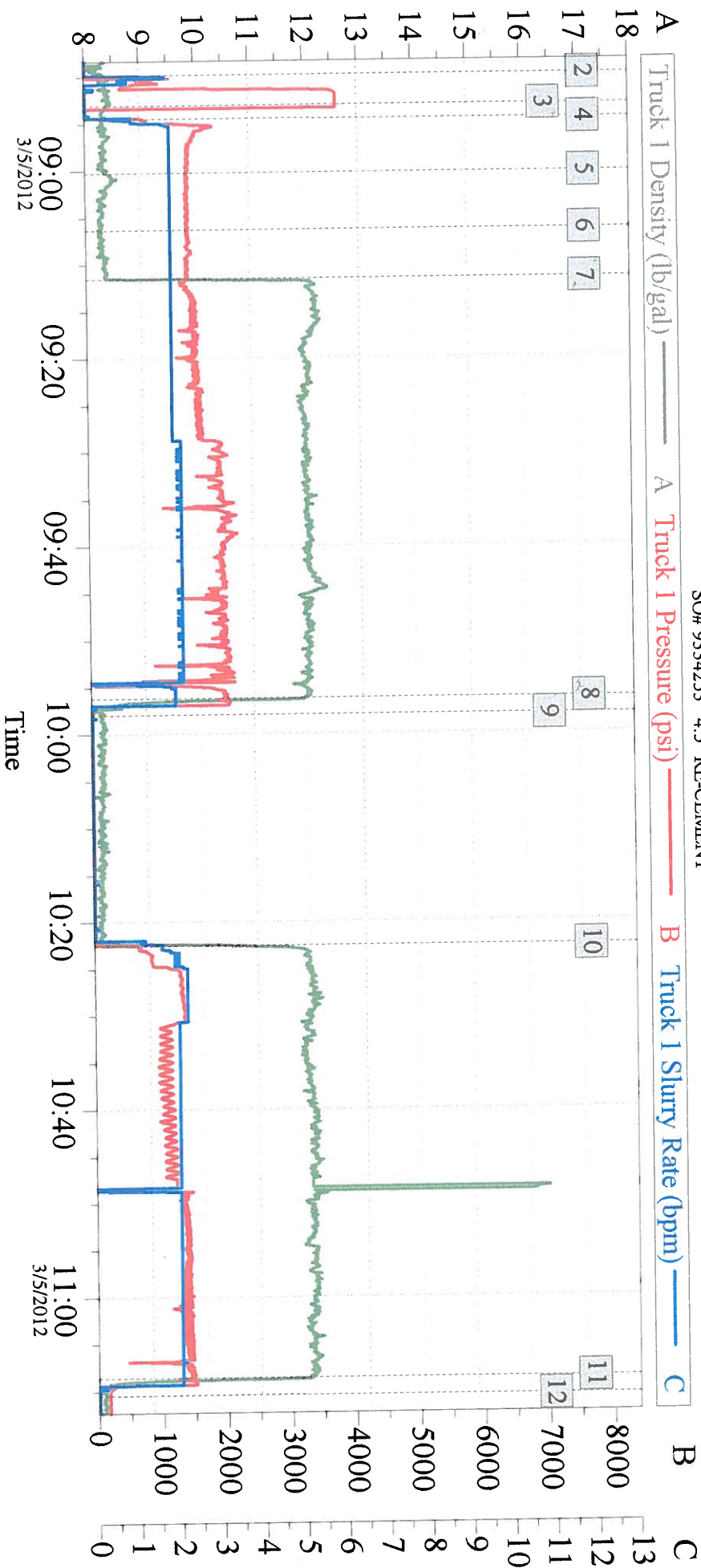
Sold To #: 304535	Ship To #: 2314229	Quote #:	Sales Order #: 9334253
Customer: PDC ENERGY EBUS		Customer Rep: SAILORS, CHAD	
Well Name: Kreps Trust	Well #: 34-6	API/UWI #: 05-123-21723	
Field: WATTENBERG	City (SAP): KERSEY	County/Parish: Weld	State: Colorado
<b>Legal Description:</b>			
Lat: N 40.509 deg. OR N 40 deg. 30 min. 32.4 secs.		Long: W 104.59 deg. OR W -105 deg. 24 min. 36.792 secs.	
Contractor:		Rig/Platform Name/Num:	
Job Purpose: Recement Service		Ticket Amount:	
Well Type: Development Well		Job Type: Recement Service	
Sales Person: FLING, MATTHEW		Srv Supervisor: SNYDER, JONATHAN MBU ID Emp #: 435616	

Activity Description	Date/Time	Cht #	Rate bbl/min	Volume bbl		Pressure psig		Comments
				Stage	Total	Tubing	Casing	
Arrive at Location from Service Center	03/05/2012 07:00							ARRIVED AND CONDUCTED A HAZARD HUNT AND FOUND NO HAZARDS THAT CONFLICT WITH US RIGGING UP EQUIPMENT.
Pre-Job Safety Meeting	03/05/2012 08:30							HELD SAFETY MEETING WITH ALL EMPLOYEES AND ALL THIRD PARTY PERSONEL PRIOR TO PUMPING THE CEMENT JOB.
Start Job	03/05/2012 08:51							
Test Lines	03/05/2012 08:53							PRESSURE TEST LINES TO 3860 PSI
Pump Spacer 1	03/05/2012 08:54		2	10			1762.0	W/ RIG WATER
Pump Spacer 2	03/05/2012 09:00		2	12			1540.0	RIG WATER MIXED W/ MUDFLUSH III
Pump Spacer 1	03/05/2012 09:06		2	10			1558.0	W/ RIG WATER
Pump Cement	03/05/2012 09:11		2.2	90			1979.0	233 SKS SURFACE VARICEM CEMENT MIXED @ 12 PPG W/ RIG WATER
Pump Displacement	03/05/2012 09:56		2	1.5			1895.0	RIG WATER MIXED W/ MUDFLUSH III
Shutdown	03/05/2012 09:57							
Pump Cement	03/05/2012 10:22		2	90			1435.0	232 SKS SURFACE VARICEM CEMENT MIXED @ 12 PPG W/ RIG WATER



Activity Description	Date/Time	Cht #	Rate bbl/ min	Volume bbl		Pressure psig		Comments
				Stage	Total	Tubing	Casing	
Pump Displacement	03/05/2012 11:08		2	1.5			1497. 0	W/ RIG WATER
End Job	03/05/2012 11:10							GOOD RETURNS THROUGHOUT THE JOB, GOT CEMENT BACK TO SURFACE AT 79 BBLS OF CEMENT AWAY IN THE 2ND STAGE. 17 BBLS OF CEMENT TO THE PITS TOTAL.
Pre-Rig Down Safety Meeting	03/05/2012 11:15							HELD SAFETY MEETING WITH ALL EMPLOYEES PRIOR TO RIGGING DOWN AND DISCUSSED ALL HAZARDS WHILE RIGGING DOWN EQUIPMENT.
Depart Location for Service Center or Other Site	03/05/2012 12:00							HELD SAFETY MEETING PRIOR TO LEAVING LOCATION AND DISCUSSED ALL POTENTIAL HAZARDS WHILE DRIVING BACK TO THE SERVICE CENTER.

PDC KREPS TRUST 34-6  
SO# 9334253 4.5" RE-CEMENT



Global Event Log

Intersection		T1D	T1P	Intersection		T1D	T1P
2	Start Job	08:49:47	8.310	1.000	3	Test Lines	08:53:03 8.385 3861
4	Pump Water Spacer	08:54:30	8.310	888.0	5	Pump MudFlush III Spacer	09:00:15 8.369 1537
6	Pump Water Spacer	09:06:18	8.230	1561	7	Pump Cement @ 12#	09:11:29 8.460 1557
8	Pump Displacement	09:56:13	11.91	2100	9	Shutdown	09:57:57 8.150 14.00
10	Pump Cement @ 12#	10:22:33	10.44	618.9	11	Pump Displacement	11:08:35 11.92 1451
12	End Job	11:10:25	8.144	160.0			

Customer: PDC  
Well Description: KREPS TRUST 34-6  
SERVICE SUPERVISOR JONATHAN SNYDER

Job Date: 05-Mar-2012  
UWI: 05-123-21723-00  
SERVICE OPERATOR JAMES WILEY

Sales Order #: 9334253