

HALLIBURTON

WPX ENERGY ROCKY MOUNTAIN LLC-EBUS

SG 13-23
GRAND VALLEY
Garfield County , Colorado

Cement Surface Casing

24-Jan-2012

Post Job Summary

The Road to Excellence Starts with Safety

Sold To #: 300721		Ship To #: 2903424		Quote #:		Sales Order #: 9217960	
Customer: WPX ENERGY ROCKY MOUNTAIN LLC-EBUS				Customer Rep: Wilson, W.C			
Well Name: SG		Well #: 13-23		API/UWI #: 05-045-20493			
Field: GRAND VALLEY		City (SAP): PARACHUTE		County/Parish: Garfield		State: Colorado	
Lat: N 39.422 deg. OR N 39 deg. 25 min. 17.954 secs.				Long: W 108.082 deg. OR W -109 deg. 55 min. 4.451 secs.			
Contractor: H&P 280		Rig/Platform Name/Num: H&P 280					
Job Purpose: Cement Surface Casing							
Well Type: Development Well				Job Type: Cement Surface Casing			
Sales Person: SCOTT, KYLE		Srvc Supervisor: DANIEL, EVERETT		MBU ID Emp #: 337325			
Job Personnel							
HES Emp Name	Exp Hrs	Emp #	HES Emp Name	Exp Hrs	Emp #	HES Emp Name	Exp Hrs
ARNOLD, EDWARD John	0.0	439784	DANIEL, EVERETT Dean	0.0	337325	LYNGSTAD, FREDRICK D	0.0
SIMINEO, JEROD M	0.0	479954					
Equipment							
HES Unit #	Distance-1 way	HES Unit #	Distance-1 way	HES Unit #	Distance-1 way	HES Unit #	Distance-1 way
10867304	60 mile	10998054	60 mile	11560046	60 mile	11562538	60 mile
11583932	60 mile						
Job Hours							
Date	On Location Hours	Operating Hours	Date	On Location Hours	Operating Hours	Date	On Location Hours
TOTAL		Total is the sum of each column separately					
Job				Job Times			
Formation Name				Date	Time	Time Zone	
Formation Depth (MD)		Top	Bottom	Called Out	24 - Jan - 2012	09:00	MST
Form Type		BHST		On Location	24 - Jan - 2012	13:45	MST
Job depth MD		620. m	Job Depth TVD	620. m	Job Started	24 - Jan - 2012	18:49
Water Depth		Wk Ht Above Floor		4. m	Job Completed	24 - Jan - 2012	19:32
Perforation Depth (MD)		From	To	Departed Loc	24 - Jan - 2012	21:00	MST
Well Data							
Description	New / Used	Max pressure MPa	Size mm	ID mm	Weight kg/m	Thread	Grade
							Top MD m
							Bottom MD m
							Top TVD m
							Bottom TVD m
Sales/Rental/3 rd Party (HES)							
Description				Qty	Qty uom	Depth	Supplier
PLUG,CMTG,TOP,9 5/8,HWE,8.16 MIN/9.06 MA				1	EA		
Tools and Accessories							
Type	Size	Qty	Make	Depth	Type	Size	Qty
Guide Shoe					Packer		
Float Shoe					Bridge Plug		
Float Collar					Retainer		
Insert Float							
Stage Tool							
Miscellaneous Materials							
Gelling Agt		Conc		Surfactant		Conc	Acid Type
Treatment Fld		Conc		Inhibitor		Conc	Sand Type
							Qty
							Conc %
							Size
							Qty

Fluid Data										
Stage/Plug #: 1										
Fluid #	Stage Type	Fluid Name	Qty	Qty uom	Mixing Density kg/m3	Yield m3/sk	Mix Fluid m3/tonne	Rate m3/min	Total Mix Fluid m3/tonne	
1	Fresh Water			bbl	8.33	.0	.0	.0		
2	VersaCem Tail	VERSACEM (TM) SYSTEM (452010)		sacks	12.8	2.11	11.75		11.75	
11.75 Gal		FRESH WATER								
3	Displacement Fluid			bbl	8.34	.0	.0	.0		
Calculated Values		Pressures		Volumes						
Displacement		Shut In: Instant		Lost Returns		Cement Slurry		Pad		
Top Of Cement		5 Min		Cement Returns		Actual Displacement		Treatment		
Frac Gradient		15 Min		Spacers		Load and Breakdown		Total Job		
Rates										
Circulating		Mixing		Displacement		Avg. Job				
Cement Left In Pipe		Amount	0 ft	Reason	Shoe Joint					
Frac Ring # 1 @	ID	Frac ring # 2 @	ID	Frac Ring # 3 @	ID	Frac Ring # 4 @	ID			
The Information Stated Herein Is Correct				Customer Representative Signature						

The Road to Excellence Starts with Safety

Sold To #: 300721	Ship To #: 2903424	Quote #:	Sales Order #: 9217960
Customer: WPX ENERGY ROCKY MOUNTAIN LLC-EBUS	Customer Rep: Wilson, W.C		
Well Name: SG	Well #: 13-23	API/UWI #: 05-045-20493	
Field: GRAND VALLEY	City (SAP): PARACHUTE	County/Parish: Garfield	State: Colorado
Legal Description:			
Lat: N 39.422 deg. OR N 39 deg. 25 min. 17.954 secs.		Long: W 108.082 deg. OR W -109 deg. 55 min. 4.451 secs.	
Contractor: H&P 280	Rig/Platform Name/Num: H&P 280		
Job Purpose: Cement Surface Casing		Ticket Amount:	
Well Type: Development Well	Job Type: Cement Surface Casing		
Sales Person: SCOTT, KYLE	Srv Supervisor: DANIEL, EVERETT	MBU ID Emp #: 337325	

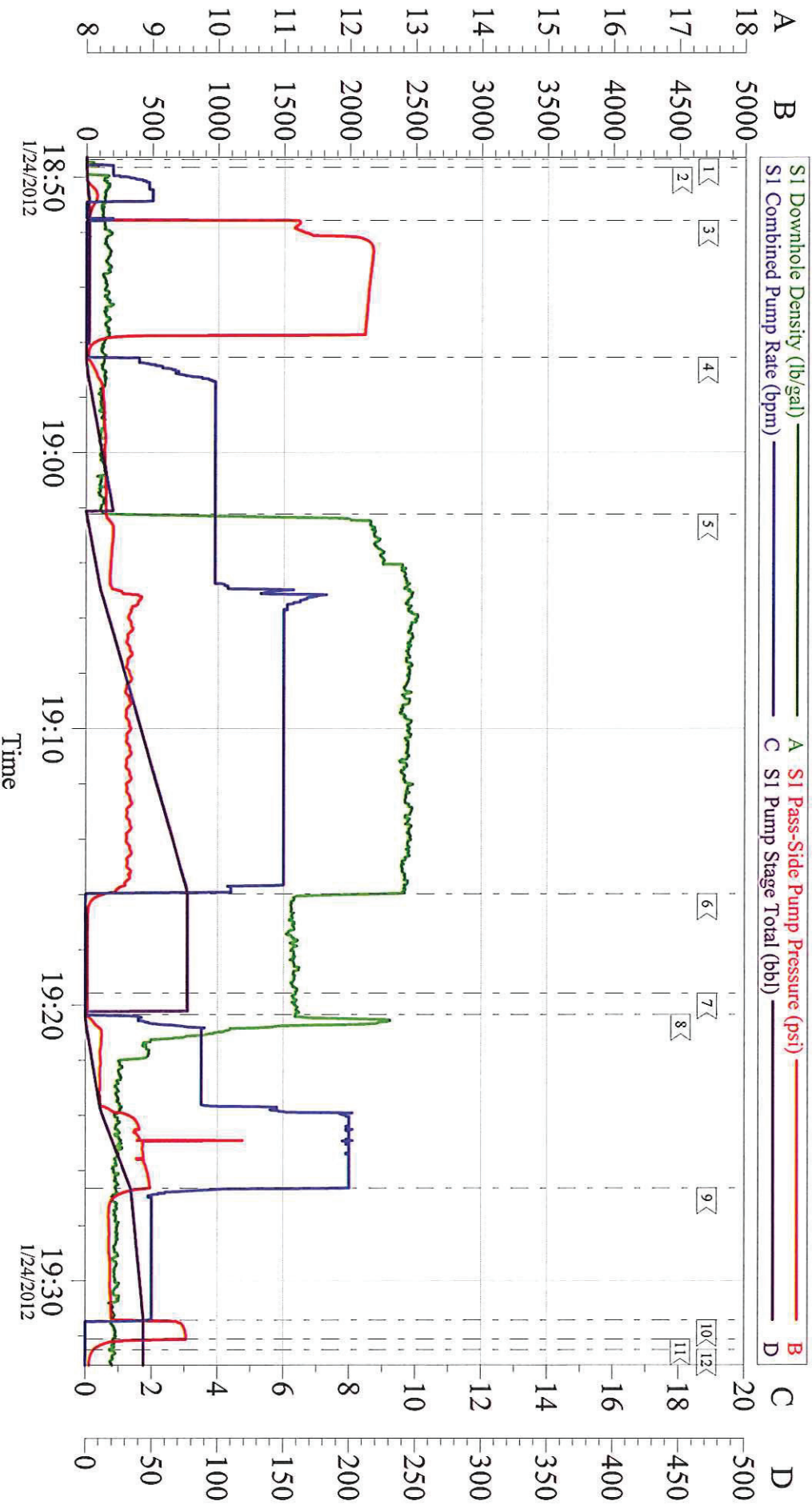
Activity Description	Date/Time	Cht #	Rate m3/ min	Volume m3		Pressure MPa		Comments
				Stage	Total	Tubing	Casing	
Call Out	01/24/2012 11:00							
Depart Yard Safety Meeting	01/24/2012 12:30							
Depart from Service Center or Other Site	01/24/2012 12:45							Checked out HES pump (Elite 9), Body load, Compressor Trailer
Arrive at Location from Service Center	01/24/2012 13:45							Arrived 1 hr. early. Did not start charging time until 1300
Assessment Of Location Safety Meeting	01/24/2012 13:46							
Comment	01/24/2012 13:50							Verified calculations and materials on location including H2O and Cement totals
Safety Meeting - Pre Rig-Up	01/24/2012 14:00							Discussed job procedures and safety issues
Rig-Up Equipment	01/24/2012 14:15							
Rig-Up Completed	01/24/2012 14:45							
Safety Meeting - Pre Job	01/24/2012 18:30							Discussed job procedures and safety issues
Start Job	01/24/2012 18:49							
Prime Pumps	01/24/2012 18:49		2	2			86.0	Fresh Water
Test Lines	01/24/2012 18:51		0.5	0.1			2100.0	Fresh Water
Pump Spacer 1	01/24/2012 18:56		4	20			148.0	Fresh Water

Cementing Job Log

Activity Description	Date/Time	Cht #	Rate m3/min	Volume m3		Pressure MPa		Comments
				Stage	Total	Tubing	Casing	
Pump Tail Cement	01/24/2012 19:02		6	75.1			344.0	200 sks of VersaCem @ 12.8#-2.11 Yield-11.75 H2O Requirement
Shutdown	01/24/2012 19:15							
Drop Top Plug	01/24/2012 19:19							
Pump Displacement	01/24/2012 19:20		8	44			475.0	Fresh Water
Slow Rate	01/24/2012 19:26		2	34			187.0	Slowed to 2 bpm
Bump Plug	01/24/2012 19:31		2	44			745.0	Bumped Plug @ calculated displacement and 500 psi over
Check Floats	01/24/2012 19:32							Floats Held
End Job	01/24/2012 19:32							
Safety Meeting - Pre Rig-Down	01/24/2012 19:35							Discussed job procedures and safety issues
Rig-Down Equipment	01/24/2012 20:15							
Rig-Down Completed	01/24/2012 20:45							
Safety Meeting - Departing Location	01/24/2012 20:50							
Depart Location for Service Center or Other Site	01/24/2012 21:00							

WILLIAMS-SG-13-23

9 5/8 SURFACE



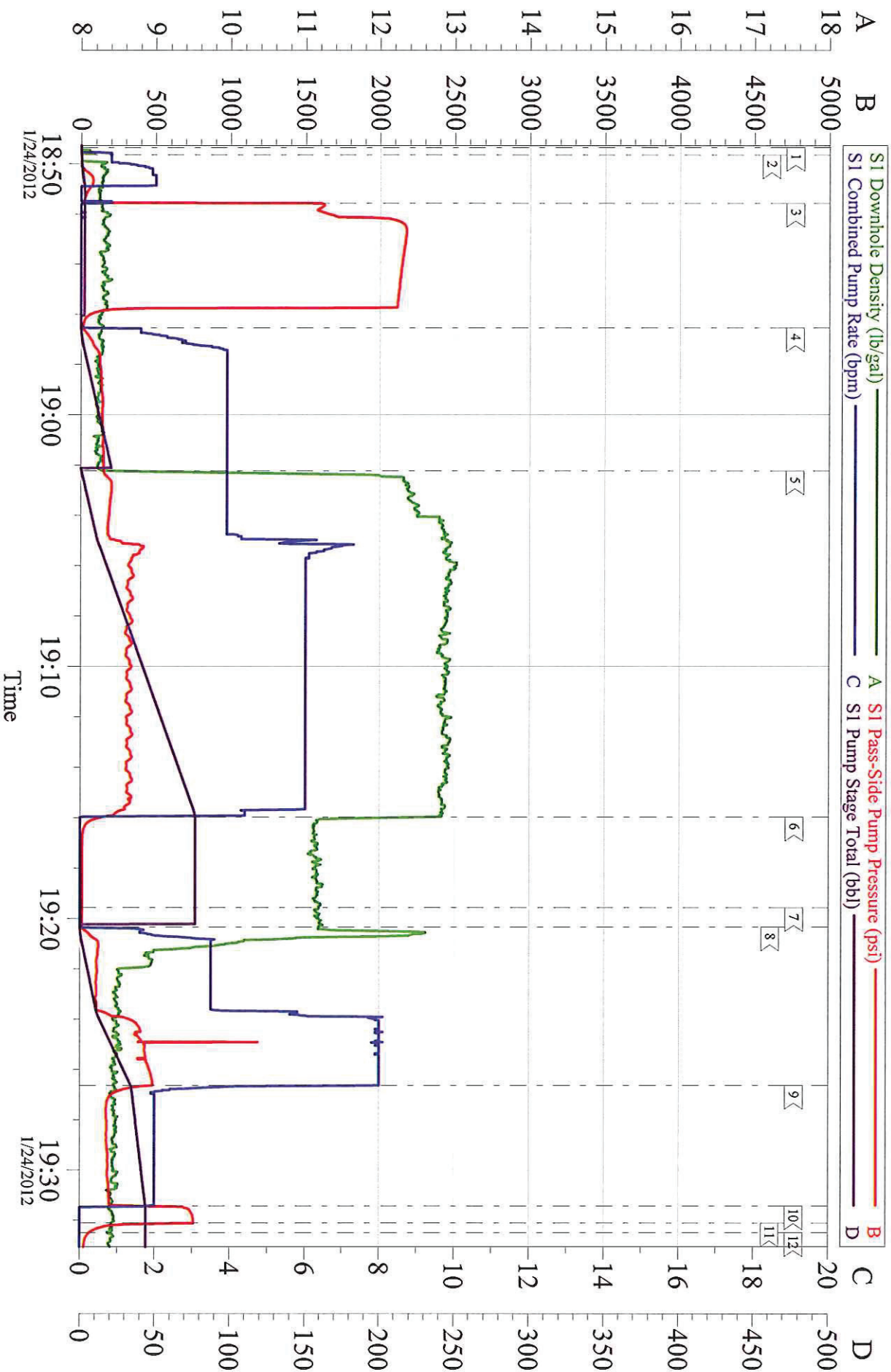
Customer: WILLIAMS
Well Description: SG-13-23
Company Rep: LARRY NICHOLS

Job Date: 24-Jan-2012
Job Type: SURFACE
Cement Supervisor: DEAN DANIEL

Sales Order #: 9217960
ADC Used: YES
Elite #/Operator: 5/JEROD SIMINEO

WILLIAMS-SG-13-23

9 5/8 SURFACE



Customer: WILLIAMS
Well Description: SG-13-23
Company Rep: LARRY NICHOLS

Job Date: 24-Jan-2012
Job Type: SURFACE
Cement Supervisor: DEAN DANIEL

Sales Order #: 9217960
ADC Used: YES
Elite #/Operator: 5/IEROD SIMINEO