

HALLIBURTON**Cementing Job Summary***The Road to Excellence Starts with Safety*

Sold To #: 304535	Ship To #: 2911884	Quote #:	Sales Order #: 9318557
Customer: PDC ENERGY EBUS	Customer Rep: Sailors, Chad		
Well Name: Erickson	Well #: 14-4		
Field: WATTENBERG	City (SAP): EATON	County/Parish: Weld	API/UWI #: 05-123-23099
Lat: N 40.509 deg. OR N 40 deg. 30 min. 33.278 secs.	Long: W 104.561 deg. OR W -105 deg. 26 min. 19.212 secs.	State: Colorado	
Contractor: BWS	Rig/Platform Name/Num: 6#		
Job Purpose: Recement Service			
Well Type: Development Well	Job Type: Recement Service		
Sales Person: FLING, MATTHEW	Srv Supervisor: LAVALLEY, LARRY	MBU ID Emp #:	419296

Job Personnel

HES Emp Name	Exp Hrs	Emp #	HES Emp Name	Exp Hrs	Emp #	HES Emp Name	Exp Hrs	Emp #
DIRKS, RICHARD E	3.5	485940	FLYNN, SHAD Michael	3.5	476484	LAVALLEY, LARRY P	3.5	419296

Equipment

HES Unit #	Distance-1 way	HES Unit #	Distance-1 way	HES Unit #	Distance-1 way	HES Unit #	Distance-1 way
10246780C	45 mile	10857012C	45 mile	11488570C	45 mile	11518549	45 mile

Job Hours

Date	On Location Hours	Operating Hours	Date	On Location Hours	Operating Hours	Date	On Location Hours	Operating Hours
2/28/12	4	2						
TOTAL								

Total is the sum of each column separately

Job

Formation Name	Formation Depth (MD)	Top	Bottom	Form Type	Job depth MD	Water Depth	Perforation Depth (MD)	From	To	Job Times	Date	Time	Time Zone
				BHST	2408. ft					Called Out	28 - Feb - 2012	02:00	MST
					Job Depth TVD	2408. ft				On Location	28 - Feb - 2012	05:30	MST
					Wk Ht Above Floor	6. ft				Job Started	28 - Feb - 2012	07:05	MST
										Job Completed	28 - Feb - 2012	08:50	MST
										Departed Loc	28 - Feb - 2012	09:45	MST

Well Data

Description	New / Used	Max pressure psig	Size in	ID in	Weight lbm/ft	Thread	Grade	Top MD ft	Bottom MD ft	Top TVD ft	Bottom TVD ft
Open Hole				9.							
Production Casing	Used		4.5	4.052	10.5		J-55	449.	2500.		
Surface Casing	Used		8.625	8.097	24.		J-55		8450.		
TUBING	Unknown		1.25	.671	3.02				449.		
									2408.		

Tools and Accessories

Type	Size	Qty	Make	Depth	Type	Size	Qty	Make	Depth	Type	Size	Qty	Make
Guide Shoe					Packer					Top Plug			
Float Shoe					Bridge Plug					Bottom Plug			
Float Collar					Retainer					SSR plug set			
Insert Float										Plug Container			
Stage Tool										Centralizers			

Miscellaneous Materials

Gelling Agt	Conc	Surfactant	Conc	Acid Type	Qty	Conc	%
Treatment Fld	Conc	Inhibitor	Conc	Sand Type	Size	Qty	

Fluid Data

Stage/Plug #: 1	Fluid #	Stage Type	Fluid Name	Qty	Qty uom	Mixing Density lbm/gal	Yield ft ³ /sk	Mix Fluid Gal/sk	Rate bbl/min	Total Mix Fluid Gal/sk
-----------------	---------	------------	------------	-----	---------	------------------------	---------------------------	------------------	--------------	------------------------

HALLIBURTON**Cementing Job Summary**

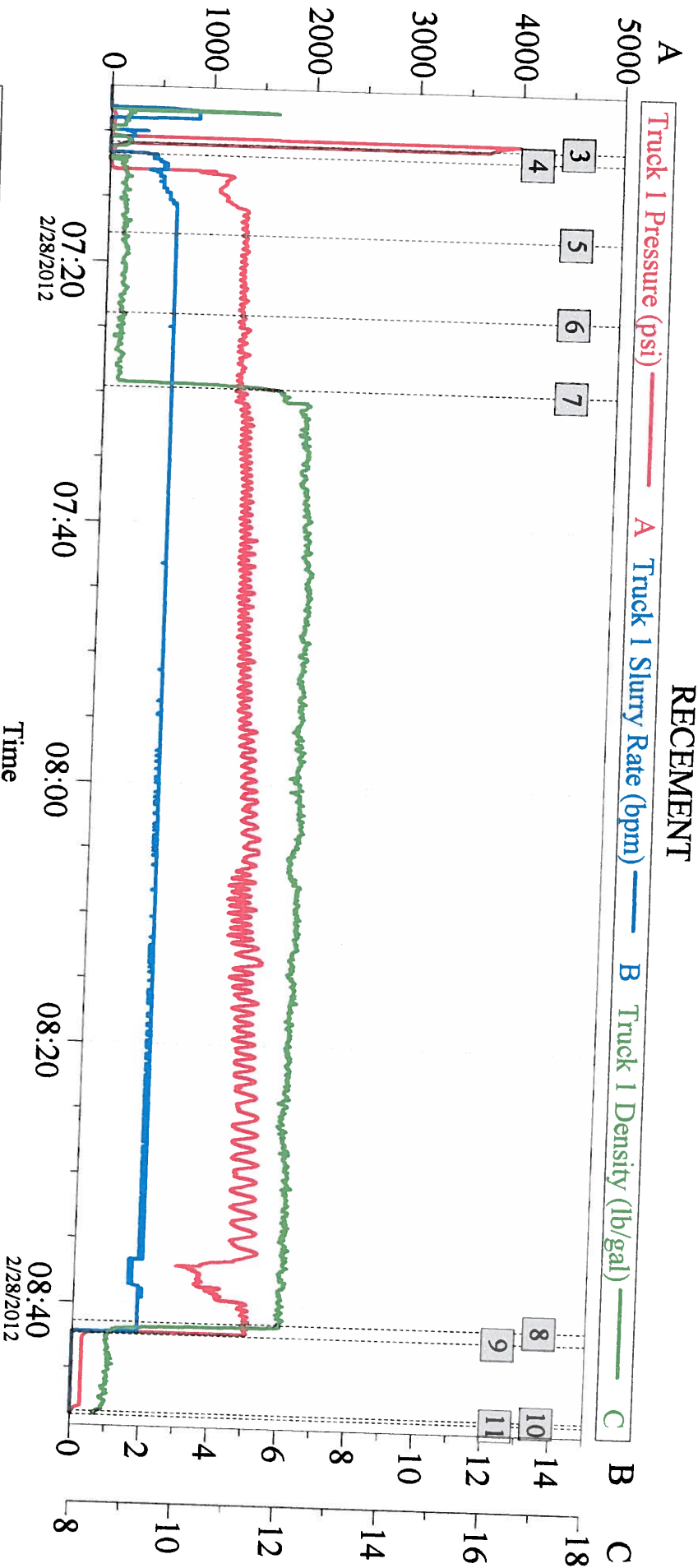
1	ClayWeb Water Spacer		10.00	bbl	8.33	.0	42.0	2.0	
2	MUD FLUSH III	MUD FLUSH III - SBM (528788)	12.00	bbl	8.4	.0	42.0	2.0	
3	ClayWeb Water Spacer		10.00	bbl	8.33	.0	42.0	2.0	
59.525 gal/Mgal		CLA-WEB - TOTE (101985045)							
4	Varicem 12#	VARICEM (TM) CEMENT (452009)	360.0	sacks	12.	2.18	12.34	2.0	12.34
12.34 Gal		FRESH WATER							
Calculated Values		Pressures		Volumes					
Displacement	1.5	Shut In: Instant		Lost Returns	0	Cement Slurry	140	Pad	
Top Of Cement		5 Min		Cement Returns	22	Actual Displacement	1.5	Treatment	
Frac Gradient		15 Min		Spacers	32	Load and Breakdown		Total Job	173.5
Rates									
Circulating		Mixing	2	Displacement	2	Avg. Job			2
Cement Left In Pipe	Amount	0 ft	Reason	Shoe Joint					
Frac Ring # 1 @	ID	Frac ring # 2 @	ID	Frac Ring # 3 @	ID	Frac Ring # 4 @	ID		
The Information Stated Herein Is Correct				Customer Representative Signature					

The Road to Excellence Starts with Safety

Sold To #: 304535	Ship To #: 2911884	Quote #:	Sales Order #: 9318557
Customer: PDC ENERGY EBUS		Customer Rep: Sailors, Chad	
Well Name: Erickson	Well #: 14-4	API/UWI #: 05-123-23099	
Field: WATTENBERG	City (SAP): EATON	County/Parish: Weld	State: Colorado
Legal Description:			
Lat: N 40.509 deg. OR N 40 deg. 30 min. 33.278 secs.		Long: W 104.561 deg. OR W -105 deg. 26 min. 19.212 secs.	
Contractor: BWS		Rig/Platform Name/Num: 6#	
Job Purpose: Recement Service		Ticket Amount:	
Well Type: Development Well		Job Type: Recement Service	
Sales Person: FLING, MATTHEW		Srv Supervisor: LAVALLEY, LARRY	
		MBU ID Emp #: 419296	

Activity Description	Date/Time	Cht #	Rate bbl/min	Volume bbl		Pressure psig		Comments
				Stage	Total	Tubing	Casing	
Start Job	02/28/2012 07:04							
Test Lines	02/28/2012 07:10					3718.0		TESTED WITH FRESH WATER
Pump Spacer 1	02/28/2012 07:11		2	10	10	1250.0		FRESH WATER WITH CLAY-WEBB ADDED. ESTABLISHED A INJECTION RATE
Pump Spacer 2	02/28/2012 07:17		2	12	22	1324.0		FRESH WATER WITH MUDFLUSH III ADDED
Pump Spacer 1	02/28/2012 07:23		2	10	32	1337.0		FRESH WATER WITH CLAY-WEBB ADDED
Pump Cement	02/28/2012 07:29		2	140	172	1337.0		360 SKS VARICEM MIXED @ 12.0 PPG
Pump Displacement	02/28/2012 08:41		2	1.5	173.5	1653.0		FRESH WATER
End Job	02/28/2012 08:48							RIG DOWN TO GO TO NEXT LOCATION

PDC ENERGY ERICKSON 14-4 RECEMENT



Global Event Log											
Intersection			TIP	TISR	T1D	Intersection			TIP	TISR	T1D
1	Starting Job	06:38:06	0.000	0.000	2.540	2	Start Job	07:04:34	-1.000	0.000	2.578
3	Test Lines	07:10:53	3718	0.000	8.397	4	Pump Spacer 1	07:11:47	26.53	1.100	0.291
5	Pump Spacer 2	07:17:51	1324	2.000	8.320	6	Pump Spacer 1	07:23:57	1337	2.000	8.320
7	Pump Cement	07:29:36	1337	2.000	11.22	8	Pump Displacement	08:41:24	1653	1.900	12.00
9	Shutdown	08:42:20	136.0	0.000	8.705	10	End Job	08:48:19	17.75	0.000	8.501
11	Ending Job	08:48:34	11.00	0.000	8.500						