
WILLIAMS PRODUCTION RMT INC

**SG 413-23
GRAND VALLEY
Garfield County , Colorado**

Cement Surface Casing **14-Jan-2012**

Post Job Report

The Road to Excellence Starts with Safety

Sold To #: 300721		Ship To #: 2900630		Quote #:		Sales Order #: 9185910	
Customer: WILLIAMS PRODUCTION RMT INC - EBUS				Customer Rep: Wilson, W.C.			
Well Name: SG			Well #: 413-23			API/UWI #: 05-045-20509	
Field: GRAND VALLEY		City (SAP): PARACHUTE		County/Parish: Garfield		State: Colorado	
Lat: N 39.422 deg. OR N 39 deg. 25 min. 18.239 secs.				Long: W 108.082 deg. OR W -109 deg. 55 min. 4.544 secs.			
Contractor: H&P 280			Rig/Platform Name/Num: H&P 280				
Job Purpose: Cement Surface Casing							
Well Type: Development Well			Job Type: Cement Surface Casing				
Sales Person: SCOTT, KYLE			Srvc Supervisor: STILLSON, ERIC			MBU ID Emp #: 393789	

Job Personnel

HES Emp Name	Exp Hrs	Emp #	HES Emp Name	Exp Hrs	Emp #	HES Emp Name	Exp Hrs	Emp #
HARDRICK, RAYMOND Frank	3	391324	STILLSON, ERIC W	3	393789	TRIPLETT, MICHEAL Anthony	3	447908
WEAVER, CARLTON Russell	3	457698						

Equipment

HES Unit #	Distance-1 way	HES Unit #	Distance-1 way	HES Unit #	Distance-1 way	HES Unit #	Distance-1 way
10567589C	60 mile	10713212	60 mile	10897849	60 mile	10951246	60 mile
10973565	60 mile						

Job Hours

Date	On Location Hours	Operating Hours	Date	On Location Hours	Operating Hours	Date	On Location Hours	Operating Hours
01-14-12	6	1						

TOTAL	Total is the sum of each column separately							
--------------	--	--	--	--	--	--	--	--

Job

Formation Name	Top	Bottom	Called Out	Date	Time	Time Zone
Formation Depth (MD)			On Location	13 - Jan - 2012	23:00	MST
Form Type	BHST		Job Started	14 - Jan - 2012	02:00	MST
Job depth MD	565. ft	Job Depth TVD	Job Started	14 - Jan - 2012	06:49	MST
Water Depth		Wk Ht Above Floor	Job Completed	14 - Jan - 2012	07:34	MST
Perforation Depth (MD)	From	To	Departed Loc	14 - Jan - 2012	09:00	MST

Well Data

Description	New / Used	Max pressure psig	Size in	ID in	Weight lbm/ft	Thread	Grade	Top MD ft	Bottom MD ft	Top TVD ft	Bottom TVD ft
OPEN HOLE SECTION				13.5				.	565.		
SURFACE CASING	Unknown		9.625	9.001	32.3			.	555.6		

Sales/Rental/3rd Party (HES)

Description	Qty	Qty uom	Depth	Supplier
PLUG,CMTG,TOP,9 5/8,HWE,8.16 MIN/9.06 MA	1	EA		

Tools and Accessories

Type	Size	Qty	Make	Depth	Type	Size	Qty	Make	Depth	Type	Size	Qty	Make
Guide Shoe					Packer					Top Plug	9.625	1	
Float Shoe					Bridge Plug					Bottom Plug			
Float Collar					Retainer					SSR plug set			
Insert Float										Plug Container	9.625	1	
Stage Tool										Centralizers			

Miscellaneous Materials

Gelling Agt	Conc	Surfactant	Conc	Acid Type	Qty	Conc	%
Treatment Fld	Conc	Inhibitor	Conc	Sand Type	Size	Qty	

Fluid Data										
Stage/Plug #: 1										
Fluid #	Stage Type	Fluid Name	Qty	Qty uom	Mixing Density lbm/gal	Yield ft ³ /sk	Mix Fluid Gal/sk	Rate bbl/min	Total Mix Fluid Gal/sk	
1	Fresh Water		20.00	bbl	8.33	.0	.0	4		
2	Tail Cement	VERSACEM (TM) SYSTEM (452010)	175.0	sacks	12.8	2.11	11.75	8	11.75	
3	Displacement Fluid		41.00	bbl	8.33	.0	.0	10		
Calculated Values		Pressures		Volumes						
Displacement	40.3	Shut In: Instant		Lost Returns	0	Cement Slurry	63	Pad		
Top Of Cement	SURFACE	5 Min		Cement Returns	10	Actual Displacement	41	Treatment		
Frac Gradient		15 Min		Spacers	20	Load and Breakdown		Total Job		
Rates										
Circulating	RIG	Mixing	8	Displacement	10	Avg. Job	8			
Cement Left In Pipe	Amount	43.4 ft	Reason	Shoe Joint						
Frac Ring # 1 @	ID	Frac ring # 2 @	ID	Frac Ring # 3 @	ID	Frac Ring # 4 @	ID			
The Information Stated Herein Is Correct				Customer Representative Signature						

The Road to Excellence Starts with Safety

Sold To #: 300721	Ship To #: 2900630	Quote #:	Sales Order #: 9185910
Customer: WILLIAMS PRODUCTION RMT INC - EBUS		Customer Rep: Wilson, W.C.	
Well Name: SG	Well #: 413-23	API/UWI #: 05-045-20509	
Field: GRAND VALLEY	City (SAP): PARACHUTE	County/Parish: Garfield	State: Colorado
Legal Description:			
Lat: N 39.422 deg. OR N 39 deg. 25 min. 18.239 secs.		Long: W 108.082 deg. OR W -109 deg. 55 min. 4.544 secs.	
Contractor: H&P 280		Rig/Platform Name/Num: H&P 280	
Job Purpose: Cement Surface Casing			Ticket Amount:
Well Type: Development Well		Job Type: Cement Surface Casing	
Sales Person: SCOTT, KYLE		Srv Supervisor: STILLSON, ERIC	MBU ID Emp #: 393789

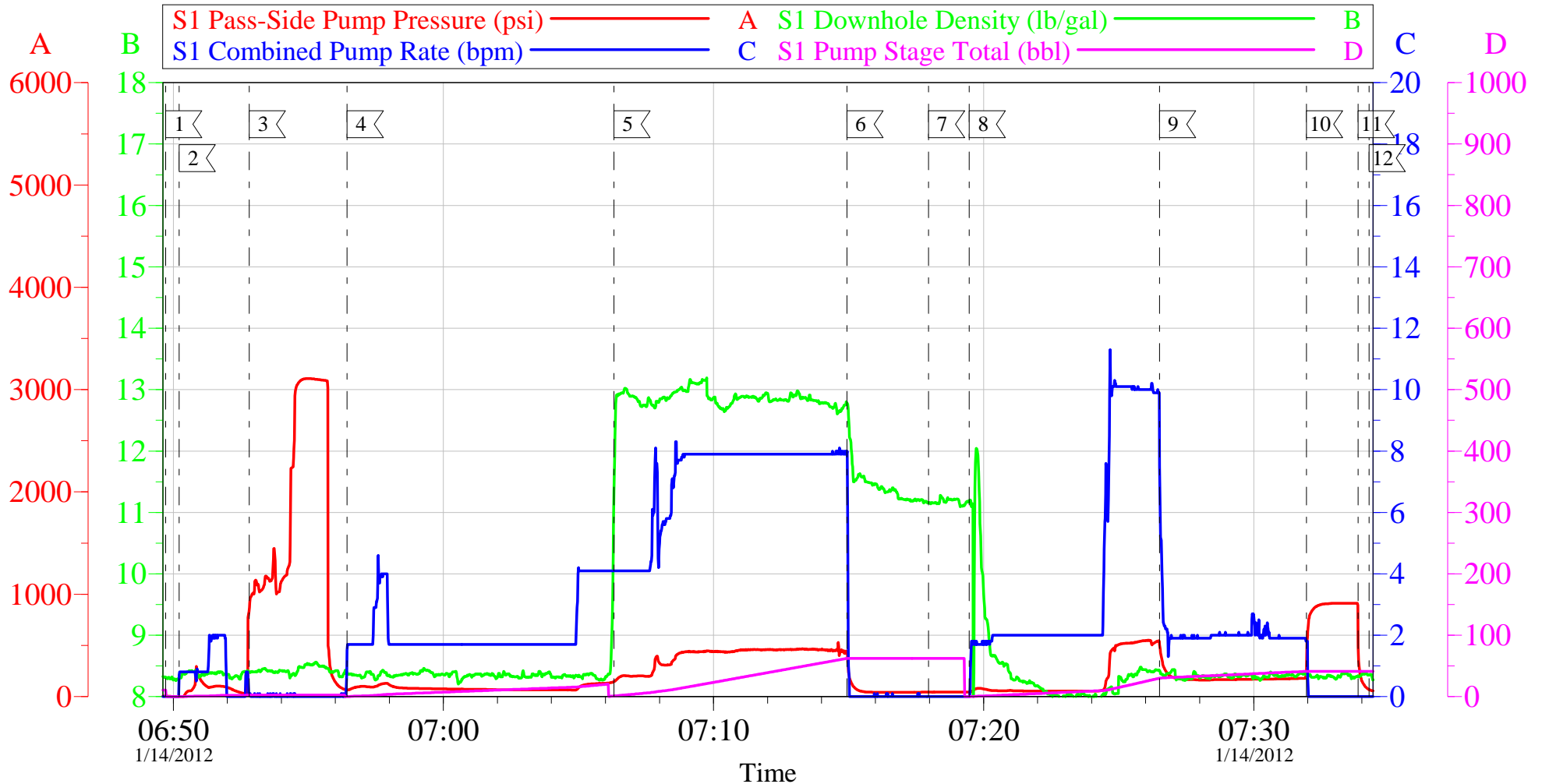
Activity Description	Date/Time	Cht #	Rate bbl/min	Volume bbl		Pressure psig		Comments
				Stage	Total	Tubing	Casing	
Call Out	01/13/2012 23:00							9 5/8 SURFACE, WILLIAMS, H&P 280, SG 413-23.
Arrive At Loc	01/14/2012 02:00							ARRIVED EARLY. RIG PULLING DRILL PIPE
Assessment Of Location Safety Meeting	01/14/2012 02:10							REVIEWED EMERGENCY PLAN, ASSESSED WORK AREA AND SPOTTED EQUIPMENT.
Pre-Rig Up Safety Meeting	01/14/2012 02:20							ENTIRE CREW, WALKED THROUGH RIG UP LOOKING FOR HAZARDS.
Rig-Up Equipment	01/14/2012 02:30							1 PICK UP, 1 HT400 PUMP TRUCK, 1 660 BULK CEMENT TRUCK, 1 QUICK LATCH HEAD WITH PLUG,
Pre-Job Safety Meeting	01/14/2012 06:15							ENTIRE CREW, CO REP AND RIG CREW.
Start Job	01/14/2012 06:49							TD 565 TP 555.6 SJ 43.35 FC 512.25 MW 9.6 PPG, 9 5/8 32.3# CASING IN 13 1/2 HOLE. RIG CIRC APPROX 1 HR, NO GAS UNITS AT SHUTDOWN.
Pump Water	01/14/2012 06:50		2	2			102.0	FILL LINES BEFORE TESTING
Pressure Test	01/14/2012 06:52		0.5	0.1			3108.0	HELD PRESSURE FOR 2 MIN, PRESSURE HELD, NO LEAKS.

Activity Description	Date/Time	Cht #	Rate bbl/min	Volume bbl		Pressure psig		Comments
				Stage	Total	Tubing	Casing	
Pump Spacer 1	01/14/2012 06:56		4	20			125.0	FRESH WATER, PUMPED AT 2 BPM UNTIL CEMENT TUB UP TO WEIGHT AND WEIGHED WITH SCALES, SPED RATE TO 4 BPM AT 15 BBLS GONE.
Pump Tail Cement	01/14/2012 07:06		8	63			460.0	175 SKS VERSACEM, 12.8 PPG, 2.11 CUFT/SK, 11.75 GAL/SK.
Shutdown	01/14/2012 07:14							
Drop Top Plug	01/14/2012 07:17							VARIFIED PLUG LEFT CONTAINER.
Pump Displacement	01/14/2012 07:19		10	40.3			540.0	FRESH WATER, WASH UP ON TOP OF PLUG, FIRST 10 BBLS AT 2 BPM THROUGH TUB, THEN SPED TO 10 BPM, CEMENT TO SURFACE AT 30 BBLS GONE, 10 BBLS OF CEMENT TO SURFACE. NO SUGAR USED.
Slow Rate	01/14/2012 07:26		2	30			180.0	SLOWED RATE TO 2 BPM TO BUMP PLUG.
Bump Plug	01/14/2012 07:31		2	41			890.0	PLUG LANDED AT 180 PSI AT 41 BBLS GONE, BUMPED UP TO 890 PSI AND HELD FOR 2 MIN PER CO REP.
Check Floats	01/14/2012 07:33							FLOATS HELD, WHEN RELEASED PRESSURE GOT 1/2 BBL OF WATER BACK TO TRUCK.
End Job	01/14/2012 07:34							GOOD RETURNS THROUGHOUT, DID NOT RECIPROCATATE PIPE.
Post-Job Safety Meeting (Pre Rig-Down)	01/14/2012 07:35							ENTIRE CREW
Rig-Down Equipment	01/14/2012 08:00							

Activity Description	Date/Time	Cht #	Rate bbl/ min	Volume bbl		Pressure psig		Comments
				Stage	Total	Tubing	Casing	
Pre-Convoy Safety Meeting	01/14/2012 08:55							ENTIRE CREW, OBSERVE ALL SAFE DRIVING PROCEDURES
Crew Leave Location	01/14/2012 09:00							THANK YOU FOR USING HALLIBURTON, ERIC STILLSON AND CREW.
Pre-Convoy Safety Meeting	01/14/2012 12:30							ENTIRE CREW, OBSERVE ALL SAFE DRIVING PROCEDURES

WILLIAMS - SG 413-23

9 5/8 SURFACE

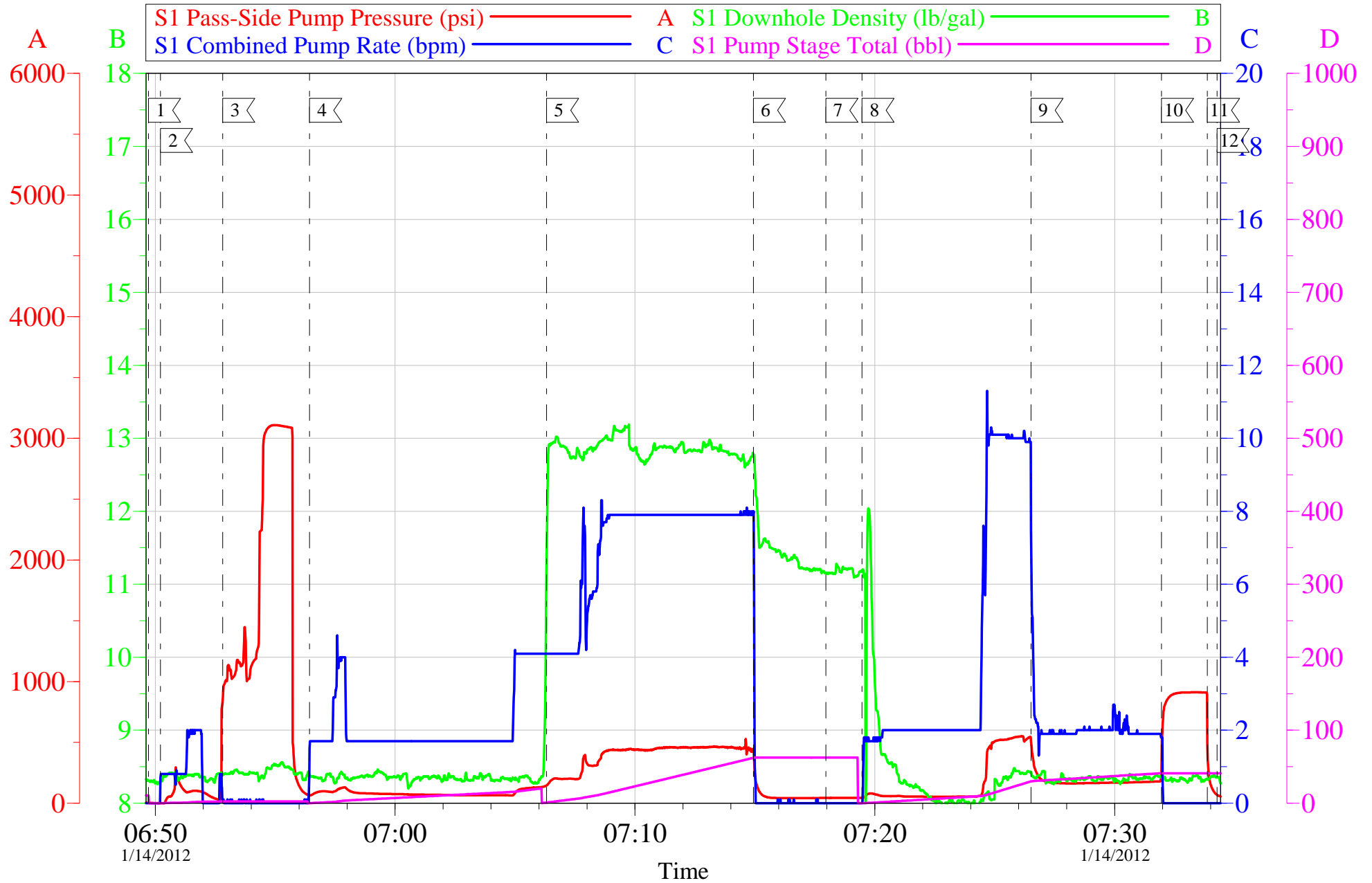


Customer: WILLIAMS	Job Date: 14-Jan-2012	Sales Order #: 9185910
Well Description: SG 413-23	Job Type: SURFACE	ADC Used: YES
Company Rep: W.C. WILSON	Cement Supervisor: ERIC STILLSON	Elite #3: RUSTY WEAVER

OptiCem v6.4.10
14-Jan-12 07:41

WILLIAMS - SG 413-23

9 5/8 SURFACE



Customer:	WILLIAMS	Job Date:	14-Jan-2012	Sales Order #:	9185910
Well Description:	SG 413-23	Job Type:	SURFACE	ADC Used:	YES
Company Rep:	W.C. WILSON	Cement Supervisor:	ERIC STILLSON	Elite #3:	RUSTY WEAVER

OptiCem v6.4.10
14-Jan-12 07:41

Sales Order #: 9185910	Line Item: 10	Survey Conducted Date: 1/14/2012
Customer: WILLIAMS PRODUCTION RMT INC - EBUS		Job Type (BOM): CMT SURFACE CASING BOM
Customer Representative: W.C. WILSON		API / UWI: (leave blank if unknown) 05-045-20509
Well Name: SG		Well Number: 413-23
Well Type: Development Well	Well Country: United States of America	
H2S Present:	Well State: Colorado	Well County: Garfield

Dear Customer,

We hope that you were satisfied with the service quality of this job performed by Halliburton. It is the aim of our management and service personnel to deliver equipment and service of a standard unmatched in the service sector of the energy industry.

Please take the time to let us know if our performance met with your satisfaction. Please be as critical as possible to ensure we constantly improve our service. Your comments are of great value to us and are intended for the exclusive use of Halliburton.

CUSTOMER SATISFACTION SURVEY

CATEGORY	CUSTOMER SATISFACTION RESPONSE	
Survey Conducted Date	The date the survey was conducted	1/14/2012
Survey Interviewer	The survey interviewer is the person who initiated the survey.	ERIC STILLSON (HX26907)
Customer Participation	Did the customer participate in this survey? (Y/N)	Yes
Customer Representative	Enter the Customer representative name	W.C. WILSON
HSE	Was our HSE performance satisfactory? Circle Y or N	Yes
Equipment	Were you satisfied with our Equipment? Circle Y or N	Yes
Personnel	Were you satisfied with our people? Circle Y or N	Yes
Customer Comment	Customer's Comment	

CUSTOMER SIGNATURE

Sales Order #: 9185910	Line Item: 10	Survey Conducted Date: 1/14/2012
Customer: WILLIAMS PRODUCTION RMT INC - EBUS		Job Type (BOM): CMT SURFACE CASING BOM
Customer Representative: W.C. WILSON		API / UWI: (leave blank if unknown) 05-045-20509
Well Name: SG		Well Number: 413-23
Well Type: Development Well	Well Country: United States of America	
H2S Present:	Well State: Colorado	Well County: Garfield

KEY PERFORMANCE INDICATORS

General	
Survey Conducted Date The date the survey was conducted	1/14/2012

Cementing KPI Survey	
Type of Job Select the type of job. (Cementing or Non-Cementing)	0
Select the Maximum Deviation range for this Job What is the highest deviation for the job you just completed? This may not be the maximum well deviation.	Vertical
Total Operating Time (hours) Total Operating Hours Including Rig-up, Pumping, Rig-down. Enter in decimal format.	3
HSE Incident, Accident, Injury HSE Incident, Accident, Injury. This should be recordable incidents only.	No
Was the job purpose achieved? Was the job delivered correctly as per customer agreed design?	Yes
Operating Hours (Pumping Hours) Total number of hours pumping fluid on this job. Enter in decimal format.	1
Customer Non-Productive Rig Time (hrs) Lost time due to Halliburton in the start, execution, or completion of an ordered service or product, or delays in a follow-on service. Enter in decimal format. 0 if none.	0
Type of Rig Classification Job Was Performed Type Of Rig (classification) Job Was Performed On	Drilling Rig (Portable)
Number Of JSAs Performed Number Of Jsas Performed	7
Number of Unplanned Shutdowns Unplanned shutdown is when injection stops for any period of time.	0
Was this a Primary Cement Job (Yes / No)	Yes

Sales Order #: 9185910	Line Item: 10	Survey Conducted Date: 1/14/2012
Customer: WILLIAMS PRODUCTION RMT INC - EBUS		Job Type (BOM): CMT SURFACE CASING BOM
Customer Representative: W.C. WILSON		API / UWI: (leave blank if unknown) 05-045-20509
Well Name: SG		Well Number: 413-23
Well Type: Development Well	Well Country: United States of America	
H2S Present:	Well State: Colorado	Well County: Garfield

Primary Cement Job= Casing job, Liner job, or Tie-back job.	
Did We Run Wiper Plugs? Did We Run Top And Bottom Casing Wiper Plugs?	Top
Mixing Density of Job Stayed in Designed Density Range (0-100%) Density Range defined as +/- .20 ppg. Calculation: Total BBLs cement mixed at designed density divided by total BBLs of cement multiplied by 100	95
Was Automated Density Control Used? Was Automated Density Control (ADC) Used ?	Yes
Pump Rate (percent) of Job Stayed At Designed Pump Rate Pump Rate range defined as +/- 1bbl/min. Calculation: Total BBLs of fluid pumped at the designed rate divided by Total BBLs of fluid pumped, multiplied by 100	100
Nbr of Remedial Sqz Jobs Rqd - Competition Number Of Remedial Squeeze Jobs Required After Primary Job Performed By Competition	0
Nbr of Remedial Plug Jobs Rqd - HES Number Of Remedial Plug Jobs Needed After Primary Plug Pumped By HES	0
Nbr of Remedial Sqz Jobs Rqd - HES Number Of Remedial Squeeze Jobs Required After Primary Job Performed By HES	0