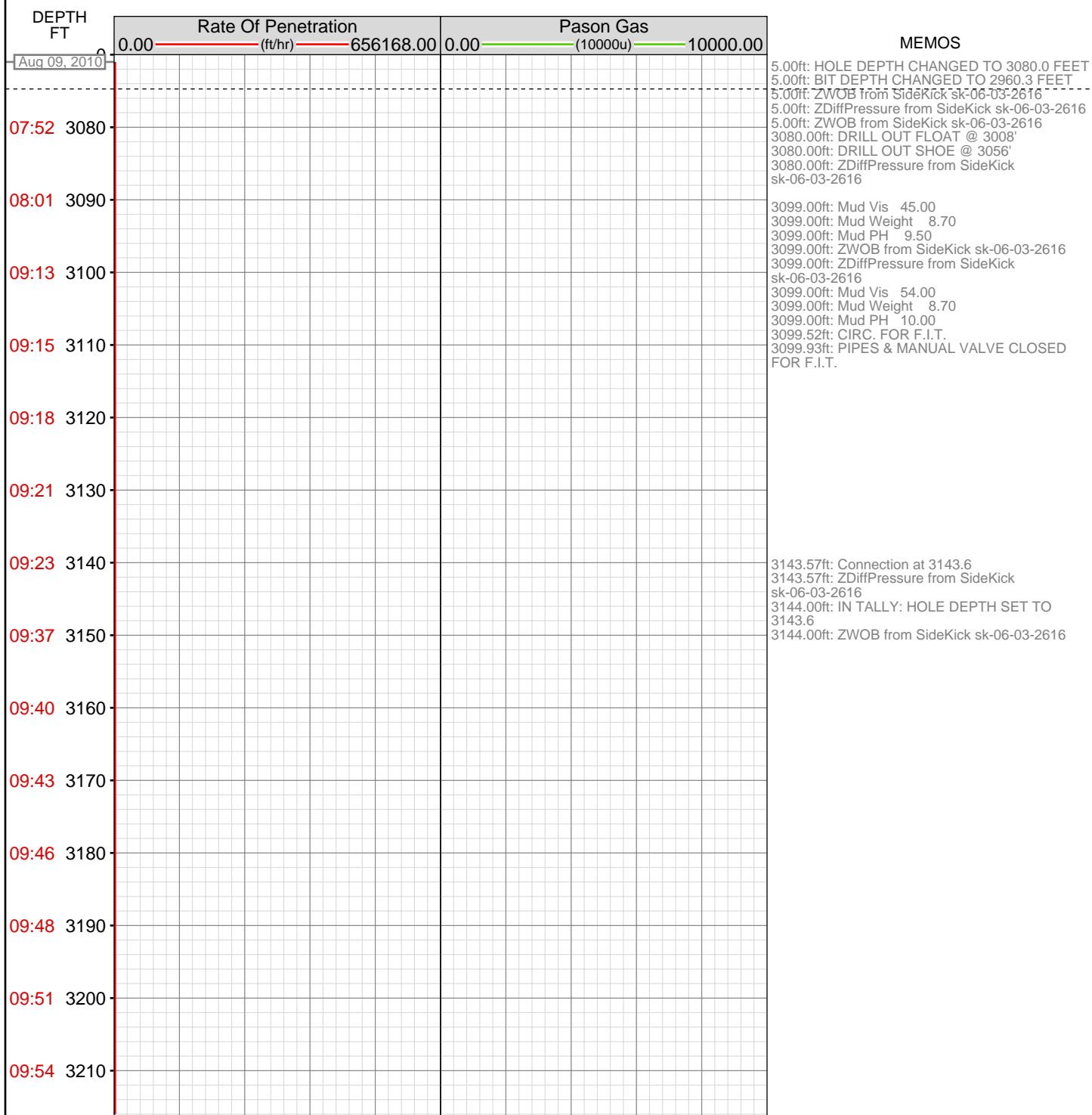


DataHub EDR Log

Mon Aug 23, 2010 08:52:29
Well Dossier 1281359581
Marilyn Tucker

OPERATOR: EnCana Oil & Gas (USA), Inc.
WELL: SGU 8507D-36 B36 496
FIELD:
LOCATION: T4S,R96W,6THP.M.,SEC 36 L
COUNTRY: USA
RIG: Pat-UT1 308

CONTRACTOR: Patterson-UTI Drilling Company
UNIQUE WELL ID: 05 045 19118 00
SPUD DATE: Aug 09, 2010 09:00
RELEASE DATE: Aug 16, 2010 00:00



[illegible]

12:11 3440

12:13 3450

12:15 3460

12:17 3470

12:19 3480

3479.13ft: PUMPED SWEEP

12:21 3490

12:23 3500

12:25 3510

3508.14ft: Connection at 3510.6

3512.01ft: ZWOB from SideKick sk-06-03-2616
3512.76ft: SURVEY Depth 3450' Inc. 14.6 Az.
196.2

12:36 3520

12:39 3530

12:42 3540

12:43 3550

12:45 3560

12:47 3570

3566.01ft: Mud Vis 58.00
3566.99ft: Mud Weight 8.90
3568.01ft: Mud PH 10.10

12:50 3580

12:53 3590

12:55 3600

13:11 3610

3604.99ft: ZDiffPressure from SideKick
sk-06-03-2616
3605.97ft: Connection at 3602.3
3605.97ft: SURVEY Depth 3542' Inc. 14.0 Az.
196.0

13:14 3620

13:16 3630

13:18 3640

13:19 3650

13:21 3660

13:23 3670

13:25 3680

13:27 3690

13:44 3700

13:51 3710

13:57 3720

14:02 3730

14:03 3740

14:05 3750

14:07 3760

14:09 3770

14:11 3780

14:23 3790

14:24 3800

14:26 3810

14:31 3820

14:36 3830

14:42 3840

14:49 3850

14:51 3860

14:53 3870

3693.96ft: SURVEY Depth 3633' Inc. 13.8 Az.
196.7
3698.00ft: IN TALLY: HOLE DEPTH SET TO
3694.0
3698.00ft: ZDiffPressure from SideKick
sk-06-03-2616
3698.13ft: Connection at 3694.0

3712.01ft: ZDiffPressure from SideKick
sk-06-03-2616
3712.01ft: ZWOB from SideKick sk-06-03-2616
3712.99ft: ZERO ALL PUMPS from SideKick
sk-06-03-1992

3737.01ft: Mud Weight 9.10
3737.47ft: Mud Vis 56.00
3737.99ft: Mud PH 9.70

3782.32ft: Connection at 3785.7
3785.99ft: ZWOB from SideKick sk-06-03-2616
3785.99ft: ZDiffPressure from SideKick
sk-06-03-2616
3786.71ft: SURVEY Depth 3725' Inc. 14.2 Az.
189.2

3841.99ft: ZWOB from SideKick sk-06-03-2616
3841.99ft: ZDiffPressure from SideKick
sk-06-03-2616
3841.99ft: ZERO ALL PUMPS from SideKick
sk-06-03-1992
3842.22ft: PUMPED SWEEP

3875.85ft: Connection at 3877.4

[illegible]

17:05 4100-

17:07 4110-

17:09 4120-

17:11 4130-

17:14 4140-

17:16 4150-

4154.46ft: Connection at 4152.6
4155.32ft: SURVEY @ 4092 INC. 11.8 AZ. 193.2

17:33 4160-

17:40 4170-

4177.00ft: ZWOB from SideKick sk-06-03-2616
4177.00ft: ZDiffPressure from SideKick
sk-06-03-2616

17:47 4180-

17:49 4190-

17:51 4200-

17:53 4210-

17:55 4220-

17:59 4230-

18:01 4240-

4247.87ft: Connection at 4244.5
4247.87ft: SURVEY @ 4184 INC. 13.9 AZ. 194.7
4248.00ft: IN TALLY: HOLE DEPTH SET TO
4244.5

18:16 4250-

18:18 4260-

18:19 4270-

4276.28ft: 20 BBL HI VIS SWEEP

18:21 4280-

18:23 4290-

18:25 4300-

18:27 4310-

18:30 4320

18:32 4330

18:47 4340

18:50 4350

18:52 4360

18:55 4370

18:58 4380

19:00 4390

19:03 4400

19:07 4410

19:09 4420

19:27 4430

19:30 4440

19:32 4450

19:34 4460

19:36 4470

19:40 4480

19:42 4490

19:45 4500

19:49 4510

20:06 4520

20:13 4530

4335.99ft: ZWOB from SideKick sk-06-03-2616
4335.99ft: ZDiffPressure from SideKick
sk-06-03-2616
4336.52ft: Connection at 4336.1
4336.52ft: SURVEY @ 4276 INC. 13.3 AZ. 192.9

4356.00ft: Mud Weight 9.00
4356.59ft: Mud Vis 56.00
4356.99ft: Mud PH 10.00

4416.99ft: Mud Vis 50.00
4418.01ft: Mud Weight 9.00
4419.00ft: Mud PH 9.50

4429.00ft: ZDiffPressure from SideKick
sk-06-03-2616
4429.46ft: Connection at 4427.7
4429.46ft: SURVEY @ 4367 INC. 13.3 AZ. 192.3

4519.49ft: Connection at 4519.5
4519.49ft: SURVEY @ 4459 INC. 12.0 AZ. 190.9
4522.01ft: IN TALLY: HOLE DEPTH SET TO
4519.5
4522.01ft: Mud Vis 58.00
4522.01ft: Mud Weight 9.00
4522.01ft: Mud PH 9.10

[illegible]

21:47 4760

21:49 4770

21:52 4780

21:54 4790

4794.59ft: IN TALLY: HOLE DEPTH SET TO
4794.6
4794.59ft: Connection at 4794.6
4794.59ft: SURVEY @ 4734 INC. 11.2 AZ. 193.4
4795.01ft: Mud Weight 8.99
4795.01ft: Mud PH 10.00
4798.00ft: Mud Vis 54.00

22:11 4800

22:17 4810

22:21 4820

4822.11ft: HI VIS SWEEP
4827.00ft: ZDiffPressure from SideKick
sk-06-03-2616
4827.00ft: ZWOB from SideKick sk-06-03-2616

22:27 4830

22:30 4840

22:32 4850

22:34 4860

22:35 4870

22:38 4880

4887.01ft: Mud Vis 52.00
4887.01ft: Mud PH 9.70
4887.01ft: Mud Weight 8.95
4887.01ft: ZWOB from SideKick sk-06-03-2616
4887.01ft: ZDiffPressure from SideKick
sk-06-03-2616
4887.34ft: Connection at 4886.3
4887.34ft: SURVEY @ 4826 INC. 13.6 AZ. 196.3

23:27 4890

23:29 4900

23:31 4910

23:33 4920

4921.88ft: PARAITE AIR 1000 CFM

23:35 4930

23:37 4940

23:39 4950

23:40 4960

23:42 4970

4977.99ft: IN TALLY: HOLE DEPTH SET TO
4978.0

23:59 4980-

Aug 10, 2010

00:01 4990-

00:04 5000-

00:11 5010-

00:16 5020-

00:18 5030-

00:20 5040-

00:22 5050-

00:25 5060-

00:28 5070-

00:49 5080-

00:53 5090-

00:59 5100-

01:01 5110-

01:03 5120-

01:05 5130-

01:07 5140-

01:09 5150-

01:11 5160-

01:26 5170-

01:30 5180-

01:32 5190-

4977.99ft: ZWOB from SideKick sk-06-03-2616
4977.99ft: ZDiffPressure from SideKick
sk-06-03-2616
4978.02ft: Connection at 4978.0
4978.02ft: SURVEY @ 4918 INC. 13.4 AZ. 198.0

4987.99ft: Mud Vis 53.00
4989.01ft: Mud Weight 9.00
4990.26ft: Mud PH 9.50

5067.68ft: Connection at 5069.7
5070.96ft: SURVEY @ 5009 INC. 13.1 AZ. 200.3
5074.74ft: 1200 CFM PARASITE

5095.01ft: ZWOB from SideKick sk-06-03-2616
5095.01ft: ZDiffPressure from SideKick
sk-06-03-2616

5159.74ft: Connection at 5161.5
5160.99ft: IN TALLY: HOLE DEPTH SET TO
5161.5
5160.99ft: ZDiffPressure from SideKick
sk-06-03-2616
5160.99ft: Mud Vis 55.00
5160.99ft: Mud Weight 9.01
5160.99ft: Mud PH 9.40
5160.99ft: ZWOB from SideKick sk-06-03-2616
5161.45ft: SURVEY @ 5101 INC. 13.3 AZ. 193.0

01:34 5200-

01:36 5210-

01:39 5220-

01:42 5230-

01:45 5240-

01:48 5250-

5254.00ft: Mud Vis 54.00
5254.36ft: Connection at 5253.3
5254.36ft: SURVEY @ 5193 INC. 12.6 AZ. 193.6
5254.99ft: Mud Weight 9.10
5254.99ft: Mud Weight 9.01
5254.99ft: Mud PH 10.01

02:09 5260-

02:15 5270-

02:22 5280-

5279.99ft: ZDiffPressure from SideKick
sk-06-03-2616
5280.02ft: ZWOB from SideKick sk-06-03-2616

02:24 5290-

02:25 5300-

5296.49ft: HI VIS SWEEP

02:27 5310-

02:28 5320-

02:30 5330-

02:32 5340-

5345.01ft: IN TALLY: HOLE DEPTH SET TO
5345.0
5345.01ft: Connection at 5345.0
5345.01ft: SURVEY @ 5285 INC. 14.2 AZ. 189.9
5350.43ft: 1300 CFM PARAITE

02:54 5350-

02:57 5360-

02:58 5370-

03:00 5380-

5375.98ft: Mud Vis 52.00
5377.00ft: Mud Weight 9.01
5379.00ft: Mud PH 9.06

03:01 5390-

03:03 5400-

03:04 5410-

[illegible]

05:17	5640	
05:24	5650	5647.01ft: ZWOB from SideKick sk-06-03-2616
05:28	5660	
05:31	5670	
05:33	5680	
05:35	5690	
05:37	5700	
05:38	5710	5710.30ft: Connection at 5711.2 5712.89ft: SURVEY Depth 5651' Inc. 12.8 Az. 190.2 5712.89ft: Air PAR 1800
05:50	5720	
05:52	5730	
05:53	5740	
05:55	5750	
05:57	5760	
06:00	5770	5766.01ft: ZERO ALL PUMPS from SideKick sk-06-03-1992 5766.01ft: ZERO ALL PUMPS from SideKick sk-06-03-1992
06:04	5780	5781.17ft: PUMPED SWEEP
06:08	5790	
06:10	5800	5800.16ft: Connection at 5802.9 5802.89ft: Mud Vis 60.00 5802.89ft: Mud PH 10.10 5804.99ft: IN TALLY: HOLE DEPTH SET TO 5802.9 5804.99ft: Mud Weight 9.10 5804.99ft: ZWOB from SideKick sk-06-03-2616
06:27	5810	
06:31	5820	5820.87ft: SURVEY Depth 5742' Inc. 12.3 Az. 191.6
06:35	5830	
06:37	5840	
06:39	5850	

06:42 5860

06:44 5870

06:46 5880

06:49 5890

5895.01ft: Connection at 5894.6

07:07 5900

07:14 5910

5906.86ft: Air PAR 1800
5909.74ft: SURVEY Depth 5834' Inc. 11.3 Az.
191.1
5912.20ft: PUMPED SWEEP
5912.99ft: ZERO ALL PUMPS from SideKick
sk-06-03-1992

07:16 5920

07:18 5930

07:20 5940

07:23 5950

07:25 5960

07:27 5970

07:30 5980

5986.12ft: Connection at 5986.2
5987.99ft: Transferred 75.00 BARRELS
5988.71ft: SURVEY Depth 5926' Inc. 10.7 Az.
193.0
5989.11ft: ZDiffPressure from SideKick
sk-06-03-2616
5989.99ft: Mud Vis 55.00
5989.99ft: Mud PH 9.50
5990.32ft: Mud Weight 9.00

07:53 5990

08:04 6000

08:12 6010

6014.01ft: ZWOB from SideKick sk-06-03-2616
6014.47ft: ZDiffPressure from SideKick
sk-06-03-2616

08:21 6020

08:23 6030

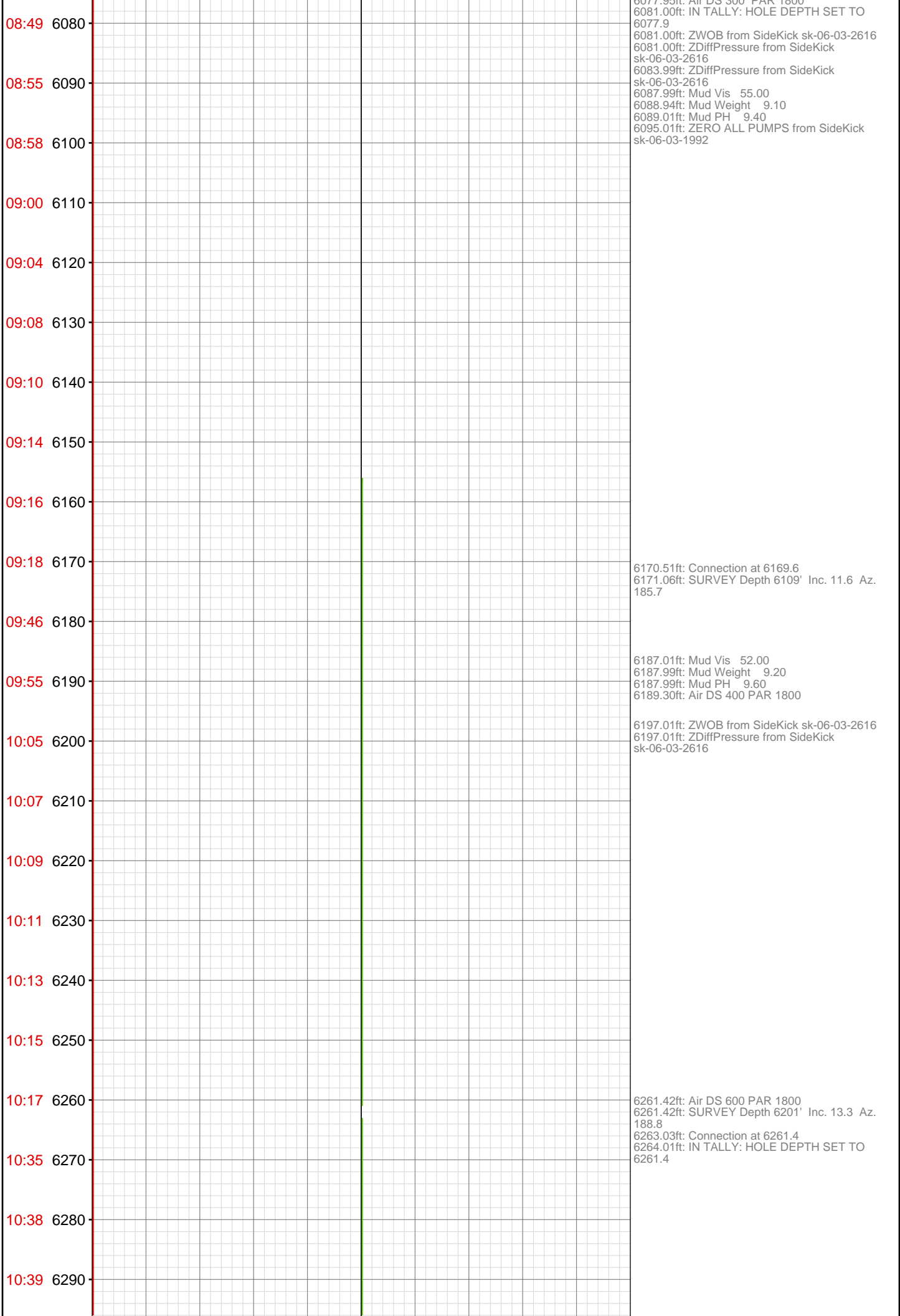
08:25 6040

08:27 6050

08:30 6060

08:33 6070

6076.87ft: Connection at 6077.9
6077.95ft: SURVEY Depth 6017' Inc. 12.5 Az.
188.7
6077.95ft: Initiating DS Air
6077.95ft: Air DS 200, PAR 1800



10:41 6300
10:43 6310
10:46 6320
10:48 6330
10:50 6340
10:52 6350
11:06 6360
11:08 6370
11:12 6380
11:16 6390
11:19 6400
11:24 6410
11:27 6420
11:29 6430
11:31 6440
12:01 6450
12:15 6460
12:34 6470
12:50 6480
12:55 6490
12:57 6500
13:00 6510

6353.08ft: Connection at 6353.1
6353.08ft: SURVEY Depth 6293' Inc. 12.0 Az.
189.6
6354.00ft: IN TALLY: HOLE DEPTH SET TO
6353.1
6354.00ft: Mud Vis 55.00
6354.00ft: Mud Weight 9.20
6354.00ft: Mud PH 9.50
6354.00ft: ZWOB from SideKick sk-06-03-2616

6376.64ft: Air DS 800 PAR 1800

6436.65ft: Air DS 1200 PAR 1800

6444.36ft: Connection at 6444.8
6446.00ft: SURVEY Depth 6384' Inc. 11.1 Az.
190.0
6448.00ft: Mud Weight 9.20
6448.00ft: Mud PH 9.40
6448.66ft: Mud Vis 53.00
6451.54ft: Air DS 1400 PAR 1800

6456.76ft: Transferring Mud

6460.99ft: Transferred 100.00 BARRELS

6475.00ft: ZDiffPressure from SideKick
sk-06-03-2616
6475.00ft: ZWOB from SideKick sk-06-03-2616

6512.99ft: Mud Vis 50.00
6512.99ft: Mud Weight 9.10

[illegible]

18:11 6960
18:14 6970
18:17 6980
18:19 6990
18:47 7000
18:50 7010
18:52 7020
18:56 7030
19:00 7040
19:03 7050
19:10 7060
19:19 7070
19:28 7080
19:58 7090
20:12 7100
20:23 7110
20:39 7120
20:44 7130
20:47 7140
20:50 7150
20:52 7160
20:56 7170

6995.44ft: Connection at 6995.4
6995.44ft: SURVEY @ 6935' inc 12.9 az 198.8
6995.44ft: ZWOB from SideKick sk-06-03-2616
6998.00ft: IN TALLY: HOLE DEPTH SET TO 6995.5

7054.99ft: Transferred 200.00 BARRELS

7081.30ft: AIR 1800 PARA

7087.99ft: ZWOB from SideKick sk-06-03-2616
7088.45ft: Connection at 7087.2
7088.45ft: SURVEY @ 7027' inc 12.5 az 200.1

7097.01ft: Mud Vis 55.00
7097.01ft: Mud Weight 9.05
7098.00ft: Mud PH 9.50

7118.01ft: HI VIS SWEEP
7118.01ft: ZWOB from SideKick sk-06-03-2616
7118.01ft: ZDiffPressure from SideKick sk-06-03-2616

7141.34ft: AIR PARA 1800 / DS 700

7178.64ft: Connection at 7178.6
7178.64ft: SURVEY @ 7118 inc 14.9 az 195.1
7179.00ft: ZDiffPressure from SideKick sk-06-03-2616

21:26 7180-

21:30 7190 -

21:33 7200 -

21:36 7210-

21:39 7220 -

21:41 7230 -

21:44 7240 -

21:46 7250 -

21:48 7260 -

21:50 7270-

22:11 7280 -

22:15 7290 -

22:17 7300 -

22:21 7310-

22:24 7320 -

22:28 7330 -

22:32 7340 -

22:35 7350 -

22:39 7360 -

23:10 7370 -

23:14 7380 -

23:18 7390 -

7179.00ft: ZDMPressure from SideKick
sk-06-03-2616
7181.00ft: IN TALLY: HOLE DEPTH SET TO
7178.7
7181.00ft: Mud Vis 56.00
7181.00ft: Mud Weight 9.00
7181.00ft: Mud PH 9.90
7181.00ft: ZWOB from SideKick sk-06-03-2616

7212.01ft: Mud Vis	56.00
7212.99ft: Mud Weight	9.00
7212.99ft: Mud PH	9.90

7271.62ft: Connection at 7270.3
7271.62ft: SURVEY @ 7210' inc 14.4 az 195.6

7301.41ft: AIR PARA 1800 / DS 800

7339.99ft: Mud Vis	63.00
7339.99ft: Mud Weight	9.05
7339.99ft: Mud PH	9.60

7364.01ft: ZWOB from SideKick sk-06-03-2616
7364.63ft: SURVEY @ 7306 inc 13.9 az 194.7
7364.63ft: Connection at 7362.1

7393.44ft: HI VIS SWEEP

23:20 7400-

23:23 7410-

23:27 7420-

23:31 7430-

23:36 7440-

23:40 7450-

Aug 11, 2010

00:01 7460-

00:03 7470-

00:06 7480-

00:10 7490-

00:12 7500-

00:16 7510-

00:18 7520-

00:21 7530-

00:25 7540-

00:46 7550-

00:48 7560-

00:51 7570-

00:53 7580-

00:55 7590-

00:57 7600-

01:00 7610-

7435.01ft: Mud Vis 62.66
7435.99ft: Mud Vis 62.00
7435.99ft: Mud Weight 9.00
7435.99ft: Mud PH 9.60

7453.87ft: Connection at 7453.9
7453.87ft: SURVEY @ 7393' inc 13.8 az 194.7
7456.99ft: IN TALLY: HOLE DEPTH SET TO 7453.9

7546.00ft: ZWOB from SideKick sk-06-03-2616
7546.00ft: Mud Vis 62.00
7546.00ft: Mud Weight 9.20
7546.79ft: Connection at 7545.6
7546.79ft: SURVEY @ 7485' inc 13.0 az 194.2
7546.79ft: AIR PARA 1800 / DS 800
7546.79ft: Mud PH 9.40

01:02 7620

01:04 7630

01:25 7640

01:28 7650

01:31 7660

01:35 7670

01:38 7680

01:41 7690

01:43 7700

01:46 7710

01:51 7720

02:14 7730

02:17 7740

02:20 7750

02:24 7760

02:27 7770

02:29 7780

02:32 7790

02:35 7800

02:38 7810

03:09 7820

03:25 7830

7637.01ft: ZWOB from SideKick sk-06-03-2616
7637.04ft: IN TALLY: HOLE DEPTH SET TO
7637.1
7637.04ft: ZDiffPressure from SideKick
sk-06-03-2616
7637.04ft: Connection at 7637.1
7637.04ft: SURVEY @ 7577' inc 12.9 az 193.2
7637.04ft: HI VIS SWEEP

7729.00ft: Mud Vis 61.00
7729.00ft: Mud PH 9.70
7729.92ft: Connection at 7728.6
7729.92ft: SURVEY @ 7668' inc 12.2 az 192.2
7729.92ft: Mud Weight 9.10

7819.95ft: Connection at 7819.9
7819.95ft: SURVEY @ 7759' onc 11.9 az 192.4
7819.95ft: AIR PARA 1800 / DS 800
7820.01ft: Mud Weight 9.15
7820.24ft: Mud PH 9.40
7823.00ft: IN TALLY: HOLE DEPTH SET TO
7819.9
7823.00ft: ZWOB from SideKick sk-06-03-2616
7823.00ft: Mud Vis 63.00
7826.97ft: Transferred 100.00 BARRELS

03:37	7840	7839.99ft: ZDiffPressure from SideKick sk-06-03-2616 7839.99ft: ZWOB from SideKick sk-06-03-2616
03:40	7850	7848.66ft: HI VIS SWEEP
03:43	7860	
03:45	7870	
03:47	7880	
03:50	7890	
03:53	7900	
03:55	7910	7912.01ft: Mud Vis 62.00 7912.01ft: Mud Weight 9.10 7912.01ft: Mud PH 9.40 7912.01ft: ZWOB from SideKick sk-06-03-2616 7912.86ft: Connection at 7911.6 7912.86ft: SURVEY @ 7851' inc 12.7 az 194.8
04:16	7920	
04:19	7930	
04:23	7940	
04:27	7950	
04:32	7960	
04:35	7970	
04:39	7980	
04:43	7990	
04:46	8000	8002.99ft: IN TALLY: HOLE DEPTH SET TO 8003.1 8002.99ft: ZWOB from SideKick sk-06-03-2616 8002.99ft: ZDiffPressure from SideKick sk-06-03-2616 8002.99ft: Mud Vis 61.00 8002.99ft: Mud Weight 9.05 8002.99ft: Mud PH 9.90 8003.08ft: Connection at 8003.1 8003.08ft: SURVEY @ 7943' inc 12.1 az 192.6 8003.08ft: AIR PARA 1800 / DS 700
05:08	8010	
05:10	8020	
05:12	8030	
05:14	8040	
05:16	8050	

05:18 8060

05:20 8070

05:24 8080

05:26 8090

05:43 8100

05:44 8110

05:46 8120

05:47 8130

05:49 8140

05:51 8150

05:52 8160

05:54 8170

05:56 8180

06:10 8190

06:12 8200

06:13 8210

06:15 8220

06:17 8230

06:19 8240

06:21 8250

06:24 8260

06:27 8270

8096.03ft: Connection at 8094.7
8096.03ft: SURVEY @ 8034 INC. 11.1 AZ. 192.2

8172.01ft: Mud Vis 52.00
8173.00ft: Mud Weight 9.10
8174.18ft: Mud PH 9.40

8188.78ft: Connection at 8186.4
8188.78ft: SURVEY @ 8126 INC. 10.2 AZ. 192.6

8223.36ft: TRANSFERING MUD F/PREMIX TO
ACTIVE
8228.25ft: PUMP SWEEP

06:32 8280

8281.00ft: ZWOB from SideKick sk-06-03-2616
8281.76ft: Connection at 8278.1
8281.76ft: SURVEY @ 8218 INC. 9.1 AZ. 193.0
8282.12ft: Air DS 700 PAR1800

07:11 8290

07:18 8300

07:30 8310

07:35 8320

8317.06ft: PUMP SWEEP
8322.01ft: Mud Vis 52.00
8322.01ft: Mud Weight 9.20
8322.01ft: Mud PH 9.10

07:39 8330

07:40 8340

07:44 8350

07:48 8360

07:50 8370

8374.41ft: Connection at 8369.7
8374.41ft: SURVEY @ 8309 INC. 10.9 AZ. 191.6

08:05 8380

08:07 8390

08:10 8400

08:14 8410

08:17 8420

08:19 8430

08:22 8440

08:25 8450

08:28 8460

08:44 8470

8467.29ft: Connection at 8461.4
8467.29ft: SURVEY @ 8401 INC. 10.5 AZ. 193.4
8469.00ft: IN TALLY: HOLE DEPTH SET TO
8461.4

08:47 8480

08:49 8490

08:51 8500-

08:53 8510-

08:55 8520-

08:57 8530-

08:59 8540-

09:02 8550-

8552.00ft: Mud Vis 57.00
8552.00ft: Mud Weight 9.20
8552.00ft: Mud PH 9.40
8552.30ft: Connection at 8553.0
8552.30ft: Air DS 900 PAR 1800
8552.30ft: SURVEY @ 8492 INC. 9.6 AZ. 192.1

09:37 8560-

09:39 8570-

09:41 8580-

09:43 8590-

09:46 8600-

09:48 8610-

09:51 8620-

09:55 8630-

09:58 8640-

8645.11ft: Connection at 8644.7
8646.98ft: SURVEY @ 8584 INC. 9.2 AZ. 191.1

10:14 8650-

10:17 8660-

10:19 8670-

10:23 8680-

10:27 8690-

10:30 8700-

10:34 8710-

10:38	8720	
10:42	8730	
11:07	8740	8737.01ft: ZWOB from SideKick sk-06-03-2616 8737.01ft: Mud Vis 52.00 8737.01ft: Mud Weight 9.25 8737.01ft: Mud PH 9.20 8737.86ft: Connection at 8736.5 8737.86ft: SURVEY @ 8676 INC. 8.7 AZ. 189.3
11:22	8750	
11:33	8760	
11:43	8770	8761.25ft: TRANSFERING MUD F/PREMIX TO ACTIVE 8765.55ft: PUMP 20BBL. SWEEP
11:51	8780	
11:55	8790	8787.50ft: Air DS 800 PAR 1800
12:00	8800	
12:05	8810	8819.00ft: Mud Vis 52.00 8819.00ft: Mud Weight 9.15 8820.01ft: Mud PH 0.92 8820.34ft: Air DS 700 PAR 1800 8830.94ft: Connection at 8828.1 8830.94ft: SURVEY @ 8768 INC. 6.4 AZ. 192.7 8835.01ft: BIT DEPTH CHANGED TO 2225.4 FEET
12:11	8820	8835.01ft: BIT DEPTH CHANGED TO 3417.1 FEET 8835.01ft: BIT DEPTH CHANGED TO 4242.7 FEET
12:32	8830	8835.01ft: Mud Vis 60.00 8835.01ft: Mud Weight 9.00 8835.01ft: Mud PH 9.80 8835.01ft: Mud Vis 69.00 8835.01ft: Mud Weight 9.40 8835.01ft: Mud PH 9.50
Aug 12, 2010		
03:22	8840	8835.01ft: ZWOB from SideKick sk-06-03-2616 8835.01ft: BIT DEPTH CHANGED TO 8835.0 FEET
05:35	8850	8835.53ft: PUMP OUT CELLAR 8835.53ft: PUMP OUT CELLAR 8835.53ft: TRANSFER MUD FROM PRE-MIX 8835.53ft: FLOW CHECK 8835.53ft: PUMP AIR PILLS PARA 800 8835.53ft: DS 800 PARA 800 8835.53ft: PARA 1200 DS 800 8835.53ft: PARA 1800 DS 800 8835.53ft: BIT DEPTH CHANGED TO 8734.4 FEET
05:51	8860	8835.53ft: AIR BYPASSED 8835.53ft: START AIR PILLS 800 PARA 600 DS 8835.53ft: AIR DS 800 /PARA 1200 8835.53ft: AIR PARA 1800 / DS 800 8835.53ft: ZDiffPressure from SideKick sk-06-03-2616
06:06	8870	8845.05ft: AIR 1800 PARA / DS BYPASSED 8846.88ft: ZWOB from SideKick sk-06-03-2616 8849.02ft: Mud Vis 59.00 8849.02ft: Mud Weight 9.45 8849.02ft: Mud PH 9.70 8849.08ft: AIR PARA 1800 8877.00ft: Mud Vis 55.00 8877.00ft: Mud Weight 9.45 8877.79ft: Mud PH 9.40 8877.99ft: ZDiffPressure from SideKick sk-06-03-2616
06:20	8880	8877.99ft: ZWOB from SideKick sk-06-03-2616
06:28	8890	
06:36	8900	
06:47	8910	8910.99ft: Mud Weight 9.50
07:16	8920	8918.73ft: Connection at 8917.8 8918.73ft: SURVEY @ 8862 INC. 3.4 AZ. 188.3
07:42	8930	8929.07ft: TRANSFERING MUD F/PREMIX

8939.01ft: ZWOB from SideKick sk-06-03-2616

Age Group	Percentage
18-24	10%
25-34	15%
35-44	20%
45-54	25%
55-64	30%
65-74	35%
75-84	40%
85+	45%

8956.00ft: Mud Vis	53.00
8956.99ft: Mud Weight	9.50
8956.99ft: Mud PH	9.40

8964.27ft: Air PAR 1800

A large grid of squares, approximately 20 squares wide and 10 squares high, intended for drawing a diagram.

[illegible]

9011.78ft: Connection at 9009.6
9011.78ft: SURVEY @ 8954 INC. 1.3 AZ. 72.6

A blank grid for drawing a diagram, consisting of 20 columns and 10 rows of squares. A vertical red line is drawn at the 1st column, and a vertical green line is drawn at the 11th column.

9087.01ft: Mud Vis 52.00
9087.01ft: Mud Weight 9.50
9087.99ft: Mud PH 9.20

9104.79ft: Connection at 9101.2
9104.79ft: SURVEY @ 9046 INC. 1.5 AZ. 83.0

10:02	9160	9158.99ft: Mud Vis 54.00 9160.01ft: Mud Weight 9.50 9160.01ft: Mud PH 9.10
10:05	9170	
10:09	9180	9175.69ft: Air PAR 1800
10:12	9190	
10:29	9200	9197.74ft: Connection at 9192.9 9197.74ft: SURVEY @ 9137 INC. 1.2 AZ. 98.2
10:32	9210	
10:35	9220	
10:38	9230	
10:42	9240	
10:45	9250	
10:49	9260	
10:53	9270	
10:57	9280	
11:15	9290	9289.99ft: Mud Vis 65.00 9289.99ft: Mud Weight 9.50 9290.72ft: Connection at 9284.5 9290.72ft: Mud PH 9.30 9290.72ft: SURVEY @ 9229 INC. 0.7 AZ. 86.7 9291.01ft: ZWOB from SideKick sk-06-03-2616
11:18	9300	
11:21	9310	
11:24	9320	9315.45ft: PUMP SWEEP
11:27	9330	
11:32	9340	
11:35	9350	
11:38	9360	
11:42	9370	

11:46 9380-

9383.86ft: Connection at 9376.2
9383.86ft: SURVEY @ 9321 INC. 0.6 AZ. 96.8

12:06 9390-

12:10 9400-

9403.38ft: PUMP SWEEP

12:13 9410-

9414.34ft: Air PAR 1800

12:16 9420-

12:20 9430-

12:23 9440-

12:26 9450-

12:30 9460-

12:33 9470-

9476.67ft: Connection at 9467.8
9476.67ft: SURVEY @ 9412 INC. 0.5 AZ. 134.9

12:55 9480-

9487.99ft: Mud Vis 65.00
9487.99ft: Mud Weight 9.55
9487.99ft: Mud PH 0.95
9492.00ft: ZWOB from SideKick sk-06-03-2616

13:10 9490-

13:15 9500-

13:19 9510-

13:22 9520-

13:26 9530-

13:29 9540-

13:32 9550-

13:35 9560-

9569.49ft: Connection at 9559.6
9569.49ft: SURVEY @ 9504 INC. 2.2 AZ. 68.0

13:53 9570-

13:56 9580-

13:59 9590-

14:02 9600
14:05 9610
14:09 9620
14:13 9630
14:17 9640
14:20 9650
14:23 9660
14:42 9670
14:45 9680
14:48 9690
14:51 9700
14:58 9710
15:02 9720
15:06 9730
15:10 9740
15:28 9750
15:31 9760
15:34 9770
15:38 9780
15:41 9790
15:44 9800
15:47 9810

9622.01ft: Mud Weight 9.60
9622.57ft: Mud Vis 95.00
9623.00ft: Mud PH 9.10

9662.37ft: Connection at 9651.3
9662.37ft: SURVEY @ 9596 INC. 1.4 AZ. 84.5

9688.29ft: Air PAR 1800
9691.57ft: PUMP SWEEP

9708.99ft: IN TALLY: HOLE DEPTH SET TO
9697.2

9735.70ft: Mud Vis 57.00
9735.99ft: Mud Weight 9.65
9735.99ft: Mud PH 9.20
9743.01ft: Connection at 9743.1
9743.01ft: SURVEY @ 9688 INC. 0.8 AZ. 120.8
9743.01ft: ZWOB from SideKick sk-06-03-2616

9777.82ft: PUMP SWEEP

15:51 9820-

15:55 9830-

16:20 9840-

16:35 9850-

16:55 9860-

16:58 9870-

17:00 9880-

17:03 9890-

17:06 9900-

17:09 9910-

17:12 9920-

17:48 9930-

17:53 9940-

17:56 9950-

18:00 9960-

18:04 9970-

18:11 9980-

18:16 9990-

18:19 10000-

18:23 10010-

18:44 10020-

18:50 10030-

9835.01ft: Mud Vis 58.00
9835.01ft: Mud Weight 9.50
9835.01ft: Mud PH 9.00
9835.96ft: Connection at 9834.8
9835.96ft: SURVEY @ 9779 INC. 1.2 AZ. 148.2

9883.01ft: Mud Vis 64.00
9883.01ft: Mud Weight 9.65
9883.99ft: Mud PH 9.40

9927.99ft: ZWOB from SideKick sk-06-03-2616
9928.87ft: RIG SERVICE
9928.87ft: Connection at 9926.6
9928.87ft: SURVEY @ 9871' inc 1.1 az 31.6

9945.08ft: AIR PARA 1800

10018.18ft: Connection at 10018.2
10018.18ft: SURVEY @ 9963' inc 1.0 az 15.0
10021.00ft: IN TALLY: HOLE DEPTH SET TO 10018.2

10029.00ft: Mud Vis 58.00
10029.99ft: Mud Weight 8.60
10029.99ft: Mud PH 9.60

18:54 10040

18:58 10050

19:03 10060

19:08 10070

19:13 10080

19:18 10090

19:22 10100

19:26 10110

10111.06ft: SURVEY @ 10, 049' inc 1.0 az 339.2
Connection at 10109.8

19:48 10120

19:53 10130

10133.99ft: Mud Vis 60.00
10133.99ft: Mud Weight 9.55
10135.01ft: Mud PH 9.70

19:56 10140

19:59 10150

20:03 10160

20:06 10170

20:10 10180

20:15 10190

20:19 10200

10204.04ft: Connection at 10201.1
10204.04ft: SURVEY @ 10,147' inc 0.7 az 280.5

20:39 10210

20:42 10220

20:47 10230

20:51 10240

10242.75ft: AIR 1800 PARA

20:56 10250

21:00 10260

21:04 10270

21:08 10280

21:12 10290

21:32 10300

21:36 10310

21:40 10320

21:45 10330

21:48 10340

21:52 10350

21:56 10360

22:00 10370

22:03 10380

22:46 10390

23:01 10400

23:17 10410

23:21 10420

23:26 10430

23:31 10440

23:34 10450

23:38 10460

23:40 10470

10296.00ft: Mud Vis 57.00
10296.00ft: Mud Weight 9.55
10296.00ft: Mud PH 9.80
10296.98ft: Connection at 10292.8
10296.98ft: SURVEY @ 10,237' inc 1.0 az 269.2

10384.51ft: Connection at 10384.5
10384.51ft: SURVEY @ 10,329' inc 1.3 az 259.4
10389.99ft: IN TALLY: HOLE DEPTH SET TO
10384.5
10389.99ft: Mud Vis 60.00
10389.99ft: Mud Weight 9.50
10389.99ft: Mud PH 9.80
10389.99ft: ZWOB from SideKick sk-06-03-2616
10389.99ft: ZDiffPressure from SideKick
sk-06-03-2616

10406.00ft: ZDiffPressure from SideKick
sk-06-03-2616
10406.00ft: ZWOB from SideKick sk-06-03-2616
10411.55ft: AIR PARA 1800

10450.98ft: Mud Vis 61.00
10451.74ft: Mud Weight 9.50
10452.00ft: Mud PH 9.70

10476.25ft: Connection at 10476.3

Aug 13, 2010

00:03 10490

00:06 10500

00:10 10510

00:14 10520

00:18 10530

00:21 10540

00:24 10550

00:28 10560

00:53 10570

01:32 10580

01:44 10590

01:48 10600

01:52 10610

01:56 10620

02:02 10630

02:06 10640

02:10 10650

02:35 10660

02:54 10670

03:11 10680

03:14 10690

10476.25ft: Connection at 10476.3
10476.25ft: SURVEY @ 10,421' inc 0.3 az 74.0
10477.00ft: IN TALLY: HOLE DEPTH SET TO
10476.3

10569.00ft: Mud Vis 60.00
10569.00ft: Mud Weight 9.50
10569.00ft: Mud PH 9.70
10569.00ft: ZDiffPressure from SideKick
sk-06-03-2616
10569.36ft: Connection at 10567.9
10569.36ft: SURVEY @ 10,512' inc 0.3 az 230.4
10569.36ft: ZWOB from SideKick sk-06-03-2616
10577.99ft: Mud Vis 56.00
10577.99ft: Mud Weight 9.55
10577.99ft: Mud PH 9.60
10581.99ft: ZDiffPressure from SideKick
sk-06-03-2616
10582.19ft: ZWOB from SideKick sk-06-03-2616

10633.14ft: AIR PARA 1800

10659.51ft: Connection at 10659.5
10659.51ft: SURVEY @ 10, 604' inc 0.8 az 26.2
10659.51ft: Mud PH 9.80
10662.01ft: IN TALLY: HOLE DEPTH SET TO
10659.5
10662.01ft: Mud Vis 62.00
10662.01ft: Mud Weight 9.50
10662.01ft: ZWOB from SideKick sk-06-03-2616
10662.01ft: ZDiffPressure from SideKick
sk-06-03-2616
10674.02ft: ZDiffPressure from SideKick
sk-06-03-2616
10674.02ft: ZWOB from SideKick sk-06-03-2616

03:18 10700-

03:22 10710-

03:27 10720-

03:31 10730-

10731.99ft: Mud Vis 61.00
10731.99ft: Mud Weight 9.50
10731.99ft: Mud PH 9.80

03:36 10740-

03:40 10750-

10752.76ft: Connection at 10751.2
10752.76ft: SURVEY @ 10,696' inc 1.9 az 37.3

03:59 10760-

04:02 10770-

04:05 10780-

04:09 10790-

04:12 10800-

04:16 10810-

04:19 10820-

04:23 10830-

04:27 10840-

10839.99ft: Mud Vis 65.00
10839.99ft: Mud Weight 9.50
10839.99ft: Mud PH 9.70

04:42 10850-

10845.67ft: SURVEY @ 10,787' inc 1.1 az 58.5
Connection at 10842.9

04:46 10860-

04:49 10870-

04:53 10880-

10885.24ft: AIR 1800 PARA PUMPING CELLAR

04:59 10890-

05:02 10900-

05:07 10910-

05:11 10920-

05:15 10930-

05:35 10940-

05:38 10950-

05:44 10960-

05:50 10970-

05:54 10980-

05:58 10990-

06:01 11000-

06:04 11010-

06:07 11020-

06:25 11030-

06:29 11040-

06:31 11050-

06:35 11060-

06:40 11070-

06:44 11080-

06:47 11090-

06:51 11100-

06:55 11110-

06:58 11120-

07:16 11130-

10934.65ft: Mud Vis 60.00
10934.65ft: Connection at 10934.6
10934.65ft: SURVEY @ 10879 INC. 0.3 AZ. 36.9
10937.99ft: IN TALLY: HOLE DEPTH SET TO
10934.6
10937.99ft: Mud Weight 9.55
10937.99ft: Mud PH 9.70

10981.00ft: Mud Vis 61.00
10981.99ft: Mud PH 9.55
10983.99ft: Mud PH 9.50

11027.72ft: Connection at 11026.2
11027.72ft: SURVEY @ 10971 INC. 0.1 AZ. 100.5

11120.01ft: Mud Vis 60.00
11120.01ft: Mud Weight 9.60
11120.01ft: Mud PH 9.50
11120.70ft: Connection at 11117.8
11120.70ft: SURVEY @ 11062 INC. 0.6 AZ. 243.4

07:20 11140

07:23 11150

07:26 11160

11164.63ft: PUMP SWEEP

07:29 11170

07:32 11180

07:37 11190

07:40 11200

07:44 11210

11213.62ft: Connection at 11209.5
11213.62ft: Air PAR 1800 SURVEY @ 11154 INC.
1.7 AZ. 224.6

08:12 11220

08:27 11230

08:38 11240

08:42 11250

08:45 11260

08:49 11270

08:52 11280

08:58 11290

11294.00ft: Mud Vis 65.00
11294.00ft: Mud Weight 9.55
11295.01ft: Mud PH 9.40

09:01 11300

09:20 11310

11306.89ft: Connection at 11301.0
11306.89ft: SURVEY @ 11246 INC. 1.0 AZ. 268.8

09:23 11320

09:28 11330

09:32 11340

09:35 11350

09:39 11360

09:42 11370

09:46 11380

09:49 11390

10:08 11400

10:12 11410

10:15 11420

10:19 11430

10:22 11440

10:25 11450

10:28 11460

10:31 11470

10:34 11480

10:56 11490

10:58 11500

11:01 11510

11:04 11520

11:07 11530

11:10 11540

11:13 11550

11:16 11560

11:20 11570

11399.02ft: Mud Vis 58.00
11399.02ft: Mud Weight 9.55
11399.02ft: Mud PH 9.40
11399.64ft: Connection at 11392.7
11399.64ft: Air PAR 1800
11399.64ft: SURVEY @ 11337 INC. 1.1 AZ. 270.0
11400.98ft: IN TALLY: HOLE DEPTH SET TO
11392.7

11418.96ft: PUMP SWEEP

11484.29ft: Connection at 11484.4

11577.00ft: Mud Vis 66.00
11577.00ft: Mud Weight 9.55
11577.00ft: Mud PH 9.40

```
11669.88ft: Connection at 11667.3
11669.88ft: SURVEY @ 11612 INC. 3.6 AZ. 250.0
11670.01ft: Mud Vis 67.00
11670.01ft: Mud PH 9.50
11670.80ft: Mud Weight 9.55
```

11760.96ft: Mud Vis 62.00
11760.99ft: Mud Weight 9.55
11760.99ft: Mud PH 9.50
11762.01ft: ZWOB from SideKick sk-06-03-2616
11762.76ft: Connection at 11758.9
11762.76ft: SURVEY @ 11703 INC. 2.8 AZ. 246.4

11782.64ft: PUMP SWEEP Air PAR 1800

14:35 11800

14:38 11810

14:41 11820

14:48 11830

14:52 11840

14:57 11850

15:14 11860

15:18 11870

15:22 11880

15:24 11890

15:27 11900

15:32 11910

15:35 11920

15:38 11930

15:40 11940

16:00 11950

16:02 11960

16:05 11970

16:10 11980

16:15 11990

16:19 12000

16:23 12010

11854.99ft: Mud Vis 67.00
11854.99ft: Mud Weight 9.50
11855.48ft: Connection at 11850.7
11855.48ft: SURVEY @ 11795 INC. 3.3 AZ. 245.6
11855.48ft: Mud PH 9.50

11948.26ft: Connection at 11942.3
11948.26ft: SURVEY @ 11887 INC. 3.4 AZ. 248.4

12037.01ft: Mud Vis 55.00
12037.01ft: Mud Weight 9.50
12037.99ft: Mud PH 9.00
12041.11ft: RIG SERVICE
12041.11ft: Connection at 12034.0
12041.11ft: SURVEY @ 11,979' inc 3.7 az 242.3
12041.11ft: Air PAR 1800
12133.99ft: ZWOB from SideKick sk-06-03-2616
12133.99ft: ZDiffPressure from SideKick
sk-06-03-2616
12134.06ft: Connection at 12125.8
12134.06ft: SURVEY @ 12,070' inc 3.5 az 244.6
12139.11ft: AIR PARA 1800
12147.01ft: Mud Vis 69.00
12147.01ft: Mud Weight 9.55
12147.01ft: Mud PH 9.50
12183.01ft: Mud Vis 69.00
12183.01ft: Mud Weight 9.55
12183.99ft: Mud PH 9.80
12217.62ft: Connection at 12217.6
12217.62ft: SURVEY @ 12,162' inc 3.4 az 245.4
12221.00ft: Mud Vis 71.00
12221.00ft: Mud Weight 9.55
12222.01ft: Mud PH 9.50
12225.98ft: IN TALLY: HOLE DEPTH SET TO
12217.6
12257.38ft: PUMP SWEEP
12272.01ft: Mud Vis 72.00
12272.01ft: Mud PH 9.60
12272.67ft: Mud Weight 9.55

[illegible]

20:28 12240

20:36 12250

20:48 12260

21:01 12270

21:09 12280

21:15 12290

12300

12295.01ft: Mud Weight 9.45
12295.01ft: Mud PH 9.30
12295.01ft: Mud Vis 75.00
12295.01ft: Mud Weight 9.45
12295.01ft: Mud PH 9.70
12295.01ft: BIT DEPTH CHANGED TO 11976.0
FEET
12295.01ft: BIT DEPTH CHANGED TO 12056.0
FEET
12295.01ft: BIT DEPTH CHANGED TO 12056.0
FEET
12295.01ft: Air PAR 1800
12295.01ft: Mud Vis 70.00
12295.01ft: Mud Weight 9.45
12295.01ft: Mud PH 10.00
12295.01ft: Mud Vis 60.00
12295.01ft: Mud Weight 9.45
12295.01ft: Mud PH 9.50
12295.01ft: AIR PARA 1800
12295.01ft: Mud Vis 51.00
12295.01ft: Mud Weight 9.45
12295.01ft: Mud PH 9.50
12295.01ft: AIR PARA 1600
12295.01ft: AIR PARASITE 1400
12295.01ft: BYASS AIR
12295.01ft: Mud Vis 46.00
12295.01ft: Mud Weight 9.45
12295.01ft: Mud PH 9.40
12295.01ft: PARA 1400
12295.01ft: PARA 1600
12295.01ft: PUMPING CELLAR
12295.01ft: PARA 800
12295.01ft: PARA 1200
12295.01ft: PARA 800
12295.01ft: AIR BYPASSED
12295.01ft: PARA 600
12295.08ft: SURVEY @ 12,240' inc 3.3 az 244.2
12295.08ft: AIR PARA 1800