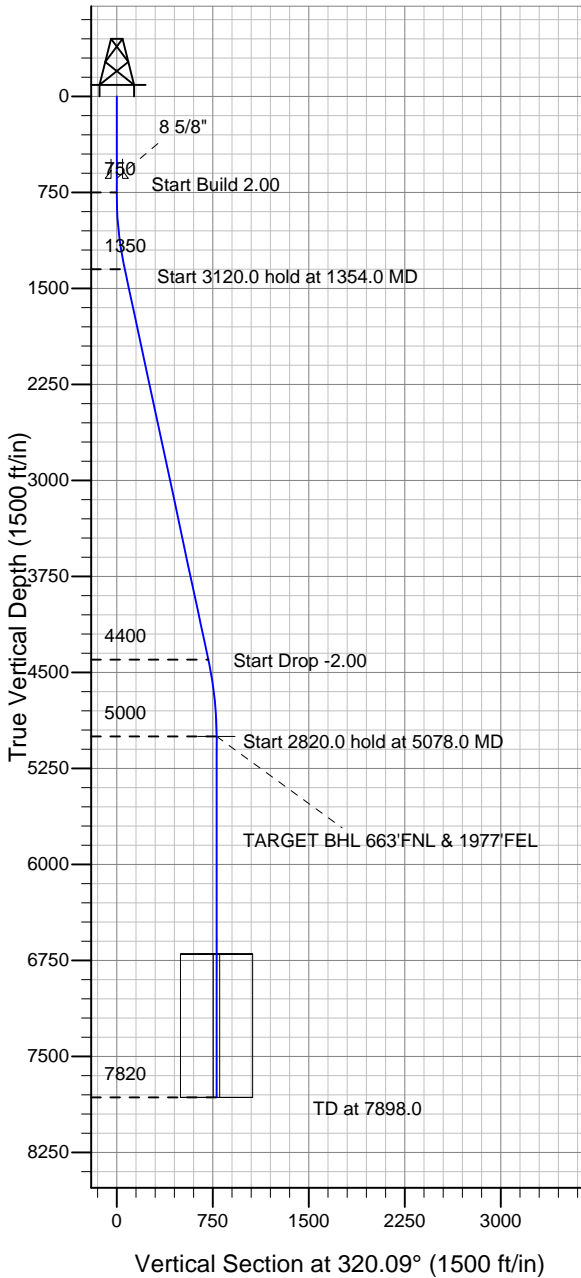
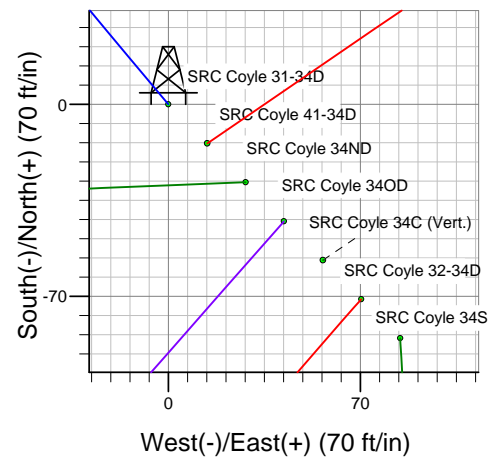
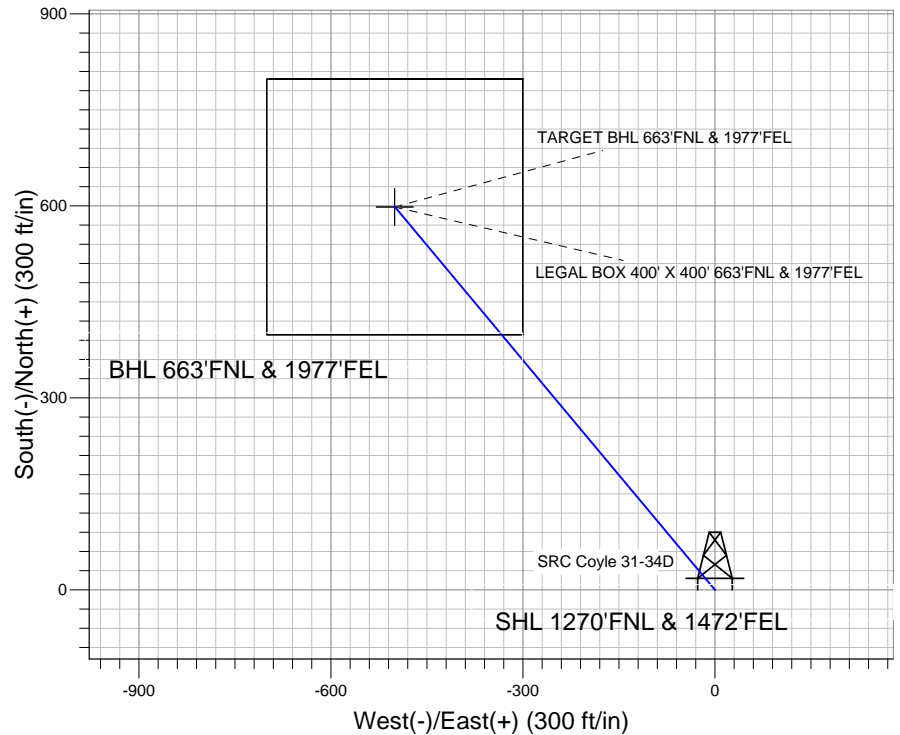


Well Name: SRC Coyle 31-34D

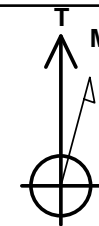
Surface Location: SRC Coyle 31-34D Pad Sec.34-T4N-R68W
 North American Datum 1983 US State Plane 1983 Colorado Northern Zone
 Ground Elevation: 5109.0
 +N/-S +E/-W Northing Easting Latitude Longitude Slot
 0.0 0.0 1342971.11 3143684.15 40.273710 -104.985054
 Original Well Elev WELL @ 5122.0ft (Original Well Elev)



Synergy Resources



SRC Coyle 31-34D Pad Sec.34-T4N-R68W
 SRC Coyle 31-34D
 Plan #1 (8-23-11)
 7:39, August 25 2011



Azimuths to True North
 Magnetic North: 8.94°

Magnetic Field
 Strength: 53018.8nT
 Dip Angle: 66.91°
 Date: 8/23/2011
 Model: IGRF2010

WELLBORE TARGET DETAILS (LAT/LONG)

Name	TVD	+N/-S	+E/-W	Latitude	Longitude	Shape
TARGET BHL 663'FNL & 1977'FEL	5000.0	598.2	-500.3	40.275352	-104.986847	Point
LEGAL BOX 400' X 400' 663'FNL & 1977'FEL	6700.0	598.2	-500.3	40.275352	-104.986847	Rectangle (Sides: L400.0 W400.0)

SECTION DETAILS

Sec	MD	Inc	Azi	TVD	+N/-S	+E/-W	DLeg	TFace	VSec	Target
1	0.0	0.00	0.00	0.0	0.0	0.0	0.00	0.00	0.0	
2	750.0	0.00	0.00	750.0	0.0	0.0	0.00	0.00	0.0	
3	1354.0	12.08	320.09	1349.6	48.7	-40.7	2.00	320.09	63.4	
4	4474.0	12.08	320.09	4400.4	549.5	-459.6	0.00	0.00	716.4	
5	5078.0	0.00	0.00	5000.0	598.2	-500.3	2.00	180.00	779.9	TARGET BHL 663'FNL & 1977'FEL
6	7898.0	0.00	0.00	7820.0	598.2	-500.3	0.00	0.00	779.9	



Directional

Synergy Resources

SEC.34-T4N-R68W

SRC Coyle 31-34D Pad Sec.34-T4N-R68W

SRC Coyle 31-34D

Wellbore #1

Plan: Plan #1 (8-23-11)

Standard Planning Report

25 August, 2011

Plan Sections										
Measured Depth (ft)	Inclination (°)	Azimuth (°)	Vertical Depth (ft)	+N/-S (ft)	+E/-W (ft)	Dogleg Rate (°/100ft)	Build Rate (°/100ft)	Turn Rate (°/100ft)	TFO (°)	Target
0.0	0.00	0.00	0.0	0.0	0.0	0.00	0.00	0.00	0.00	
750.0	0.00	0.00	750.0	0.0	0.0	0.00	0.00	0.00	0.00	
1,354.0	12.08	320.09	1,349.6	48.7	-40.7	2.00	2.00	0.00	320.09	
4,474.0	12.08	320.09	4,400.4	549.5	-459.6	0.00	0.00	0.00	0.00	
5,078.0	0.00	0.00	5,000.0	598.2	-500.3	2.00	-2.00	0.00	180.00	TARGET BHL 663°
7,898.0	0.00	0.00	7,820.0	598.2	-500.3	0.00	0.00	0.00	0.00	

Database:	Landmark	Local Co-ordinate Reference:	Well SRC Coyle 31-34D
Company:	Synergy Resources	TVD Reference:	WELL @ 5122.0ft (Original Well Elev)
Project:	SEC.34-T4N-R68W	MD Reference:	WELL @ 5122.0ft (Original Well Elev)
Site:	SRC Coyle 31-34D Pad Sec.34-T4N-R68W	North Reference:	True
Well:	SRC Coyle 31-34D	Survey Calculation Method:	Minimum Curvature
Wellbore:	Wellbore #1		
Design:	Plan #1 (8-23-11)		

Planned Survey									
Measured Depth (ft)	Inclination (°)	Azimuth (°)	Vertical Depth (ft)	+N/-S (ft)	+E/-W (ft)	Vertical Section (ft)	Dogleg Rate (°/100ft)	Build Rate (°/100ft)	Turn Rate (°/100ft)
0.0	0.00	0.00	0.0	0.0	0.0	0.0	0.00	0.00	0.00
40.0	0.00	0.00	40.0	0.0	0.0	0.0	0.00	0.00	0.00
80.0	0.00	0.00	80.0	0.0	0.0	0.0	0.00	0.00	0.00
120.0	0.00	0.00	120.0	0.0	0.0	0.0	0.00	0.00	0.00
160.0	0.00	0.00	160.0	0.0	0.0	0.0	0.00	0.00	0.00
200.0	0.00	0.00	200.0	0.0	0.0	0.0	0.00	0.00	0.00
240.0	0.00	0.00	240.0	0.0	0.0	0.0	0.00	0.00	0.00
280.0	0.00	0.00	280.0	0.0	0.0	0.0	0.00	0.00	0.00
320.0	0.00	0.00	320.0	0.0	0.0	0.0	0.00	0.00	0.00
360.0	0.00	0.00	360.0	0.0	0.0	0.0	0.00	0.00	0.00
400.0	0.00	0.00	400.0	0.0	0.0	0.0	0.00	0.00	0.00
440.0	0.00	0.00	440.0	0.0	0.0	0.0	0.00	0.00	0.00
480.0	0.00	0.00	480.0	0.0	0.0	0.0	0.00	0.00	0.00
520.0	0.00	0.00	520.0	0.0	0.0	0.0	0.00	0.00	0.00
560.0	0.00	0.00	560.0	0.0	0.0	0.0	0.00	0.00	0.00
600.0	0.00	0.00	600.0	0.0	0.0	0.0	0.00	0.00	0.00
640.0	0.00	0.00	640.0	0.0	0.0	0.0	0.00	0.00	0.00
8 5/8"									
680.0	0.00	0.00	680.0	0.0	0.0	0.0	0.00	0.00	0.00
720.0	0.00	0.00	720.0	0.0	0.0	0.0	0.00	0.00	0.00
750.0	0.00	0.00	750.0	0.0	0.0	0.0	0.00	0.00	0.00
760.0	0.20	320.09	760.0	0.0	0.0	0.0	2.00	2.00	0.00
800.0	1.00	320.09	800.0	0.3	-0.3	0.4	2.00	2.00	0.00
840.0	1.80	320.09	840.0	1.1	-0.9	1.4	2.00	2.00	0.00
880.0	2.60	320.09	880.0	2.3	-1.9	2.9	2.00	2.00	0.00
920.0	3.40	320.09	919.9	3.9	-3.2	5.0	2.00	2.00	0.00
960.0	4.20	320.09	959.8	5.9	-4.9	7.7	2.00	2.00	0.00
1,000.0	5.00	320.09	999.7	8.4	-7.0	10.9	2.00	2.00	0.00
1,040.0	5.80	320.09	1,039.5	11.2	-9.4	14.7	2.00	2.00	0.00
1,080.0	6.60	320.09	1,079.3	14.6	-12.2	19.0	2.00	2.00	0.00
1,120.0	7.40	320.09	1,119.0	18.3	-15.3	23.9	2.00	2.00	0.00
1,160.0	8.20	320.09	1,158.6	22.5	-18.8	29.3	2.00	2.00	0.00
1,200.0	9.00	320.09	1,198.2	27.1	-22.6	35.3	2.00	2.00	0.00
1,240.0	9.80	320.09	1,237.6	32.1	-26.8	41.8	2.00	2.00	0.00
1,280.0	10.60	320.09	1,277.0	37.5	-31.4	48.9	2.00	2.00	0.00
1,320.0	11.40	320.09	1,316.2	43.4	-36.3	56.5	2.00	2.00	0.00
1,354.0	12.08	320.09	1,349.6	48.7	-40.7	63.4	2.00	2.00	0.00
1,360.0	12.08	320.09	1,355.4	49.6	-41.5	64.7	0.00	0.00	0.00
1,400.0	12.08	320.09	1,394.5	56.0	-46.9	73.1	0.00	0.00	0.00
1,440.0	12.08	320.09	1,433.6	62.5	-52.2	81.4	0.00	0.00	0.00
1,480.0	12.08	320.09	1,472.7	68.9	-57.6	89.8	0.00	0.00	0.00
1,520.0	12.08	320.09	1,511.9	75.3	-63.0	98.2	0.00	0.00	0.00
1,560.0	12.08	320.09	1,551.0	81.7	-68.4	106.5	0.00	0.00	0.00
1,600.0	12.08	320.09	1,590.1	88.2	-73.7	114.9	0.00	0.00	0.00
1,640.0	12.08	320.09	1,629.2	94.6	-79.1	123.3	0.00	0.00	0.00
1,680.0	12.08	320.09	1,668.3	101.0	-84.5	131.7	0.00	0.00	0.00
1,720.0	12.08	320.09	1,707.4	107.4	-89.8	140.0	0.00	0.00	0.00
1,760.0	12.08	320.09	1,746.5	113.8	-95.2	148.4	0.00	0.00	0.00
1,800.0	12.08	320.09	1,785.7	120.3	-100.6	156.8	0.00	0.00	0.00
1,840.0	12.08	320.09	1,824.8	126.7	-106.0	165.1	0.00	0.00	0.00
1,880.0	12.08	320.09	1,863.9	133.1	-111.3	173.5	0.00	0.00	0.00
1,920.0	12.08	320.09	1,903.0	139.5	-116.7	181.9	0.00	0.00	0.00
1,960.0	12.08	320.09	1,942.1	145.9	-122.1	190.3	0.00	0.00	0.00
2,000.0	12.08	320.09	1,981.2	152.4	-127.4	198.6	0.00	0.00	0.00

Database:	Landmark	Local Co-ordinate Reference:	Well SRC Coyle 31-34D
Company:	Synergy Resources	TVD Reference:	WELL @ 5122.0ft (Original Well Elev)
Project:	SEC.34-T4N-R68W	MD Reference:	WELL @ 5122.0ft (Original Well Elev)
Site:	SRC Coyle 31-34D Pad Sec.34-T4N-R68W	North Reference:	True
Well:	SRC Coyle 31-34D	Survey Calculation Method:	Minimum Curvature
Wellbore:	Wellbore #1		
Design:	Plan #1 (8-23-11)		

Planned Survey									
Measured Depth (ft)	Inclination (°)	Azimuth (°)	Vertical Depth (ft)	+N/-S (ft)	+E/-W (ft)	Vertical Section (ft)	Dogleg Rate (°/100ft)	Build Rate (°/100ft)	Turn Rate (°/100ft)
2,040.0	12.08	320.09	2,020.3	158.8	-132.8	207.0	0.00	0.00	0.00
2,080.0	12.08	320.09	2,059.5	165.2	-138.2	215.4	0.00	0.00	0.00
2,120.0	12.08	320.09	2,098.6	171.6	-143.5	223.8	0.00	0.00	0.00
2,160.0	12.08	320.09	2,137.7	178.1	-148.9	232.1	0.00	0.00	0.00
2,200.0	12.08	320.09	2,176.8	184.5	-154.3	240.5	0.00	0.00	0.00
2,240.0	12.08	320.09	2,215.9	190.9	-159.7	248.9	0.00	0.00	0.00
2,280.0	12.08	320.09	2,255.0	197.3	-165.0	257.2	0.00	0.00	0.00
2,320.0	12.08	320.09	2,294.1	203.7	-170.4	265.6	0.00	0.00	0.00
2,360.0	12.08	320.09	2,333.3	210.2	-175.8	274.0	0.00	0.00	0.00
2,400.0	12.08	320.09	2,372.4	216.6	-181.1	282.4	0.00	0.00	0.00
2,440.0	12.08	320.09	2,411.5	223.0	-186.5	290.7	0.00	0.00	0.00
2,480.0	12.08	320.09	2,450.6	229.4	-191.9	299.1	0.00	0.00	0.00
2,520.0	12.08	320.09	2,489.7	235.9	-197.3	307.5	0.00	0.00	0.00
2,560.0	12.08	320.09	2,528.8	242.3	-202.6	315.8	0.00	0.00	0.00
2,600.0	12.08	320.09	2,567.9	248.7	-208.0	324.2	0.00	0.00	0.00
2,640.0	12.08	320.09	2,607.1	255.1	-213.4	332.6	0.00	0.00	0.00
2,680.0	12.08	320.09	2,646.2	261.5	-218.7	341.0	0.00	0.00	0.00
2,720.0	12.08	320.09	2,685.3	268.0	-224.1	349.3	0.00	0.00	0.00
2,760.0	12.08	320.09	2,724.4	274.4	-229.5	357.7	0.00	0.00	0.00
2,800.0	12.08	320.09	2,763.5	280.8	-234.8	366.1	0.00	0.00	0.00
2,840.0	12.08	320.09	2,802.6	287.2	-240.2	374.4	0.00	0.00	0.00
2,880.0	12.08	320.09	2,841.7	293.6	-245.6	382.8	0.00	0.00	0.00
2,920.0	12.08	320.09	2,880.9	300.1	-251.0	391.2	0.00	0.00	0.00
2,960.0	12.08	320.09	2,920.0	306.5	-256.3	399.6	0.00	0.00	0.00
3,000.0	12.08	320.09	2,959.1	312.9	-261.7	407.9	0.00	0.00	0.00
3,040.0	12.08	320.09	2,998.2	319.3	-267.1	416.3	0.00	0.00	0.00
3,080.0	12.08	320.09	3,037.3	325.8	-272.4	424.7	0.00	0.00	0.00
3,120.0	12.08	320.09	3,076.4	332.2	-277.8	433.0	0.00	0.00	0.00
3,160.0	12.08	320.09	3,115.5	338.6	-283.2	441.4	0.00	0.00	0.00
3,200.0	12.08	320.09	3,154.7	345.0	-288.6	449.8	0.00	0.00	0.00
3,240.0	12.08	320.09	3,193.8	351.4	-293.9	458.2	0.00	0.00	0.00
3,280.0	12.08	320.09	3,232.9	357.9	-299.3	466.5	0.00	0.00	0.00
3,320.0	12.08	320.09	3,272.0	364.3	-304.7	474.9	0.00	0.00	0.00
3,360.0	12.08	320.09	3,311.1	370.7	-310.0	483.3	0.00	0.00	0.00
3,400.0	12.08	320.09	3,350.2	377.1	-315.4	491.6	0.00	0.00	0.00
3,440.0	12.08	320.09	3,389.3	383.5	-320.8	500.0	0.00	0.00	0.00
3,480.0	12.08	320.09	3,428.5	390.0	-326.1	508.4	0.00	0.00	0.00
3,520.0	12.08	320.09	3,467.6	396.4	-331.5	516.8	0.00	0.00	0.00
3,560.0	12.08	320.09	3,506.7	402.8	-336.9	525.1	0.00	0.00	0.00
3,600.0	12.08	320.09	3,545.8	409.2	-342.3	533.5	0.00	0.00	0.00
3,640.0	12.08	320.09	3,584.9	415.7	-347.6	541.9	0.00	0.00	0.00
3,680.0	12.08	320.09	3,624.0	422.1	-353.0	550.2	0.00	0.00	0.00
3,720.0	12.08	320.09	3,663.1	428.5	-358.4	558.6	0.00	0.00	0.00
3,760.0	12.08	320.09	3,702.3	434.9	-363.7	567.0	0.00	0.00	0.00
3,800.0	12.08	320.09	3,741.4	441.3	-369.1	575.4	0.00	0.00	0.00
3,840.0	12.08	320.09	3,780.5	447.8	-374.5	583.7	0.00	0.00	0.00
3,880.0	12.08	320.09	3,819.6	454.2	-379.9	592.1	0.00	0.00	0.00
3,920.0	12.08	320.09	3,858.7	460.6	-385.2	600.5	0.00	0.00	0.00
3,960.0	12.08	320.09	3,897.8	467.0	-390.6	608.8	0.00	0.00	0.00
4,000.0	12.08	320.09	3,936.9	473.5	-396.0	617.2	0.00	0.00	0.00
4,040.0	12.08	320.09	3,976.1	479.9	-401.3	625.6	0.00	0.00	0.00
4,080.0	12.08	320.09	4,015.2	486.3	-406.7	634.0	0.00	0.00	0.00
4,120.0	12.08	320.09	4,054.3	492.7	-412.1	642.3	0.00	0.00	0.00
4,160.0	12.08	320.09	4,093.4	499.1	-417.4	650.7	0.00	0.00	0.00

Database:	Landmark	Local Co-ordinate Reference:	Well SRC Coyle 31-34D
Company:	Synergy Resources	TVD Reference:	WELL @ 5122.0ft (Original Well Elev)
Project:	SEC.34-T4N-R68W	MD Reference:	WELL @ 5122.0ft (Original Well Elev)
Site:	SRC Coyle 31-34D Pad Sec.34-T4N-R68W	North Reference:	True
Well:	SRC Coyle 31-34D	Survey Calculation Method:	Minimum Curvature
Wellbore:	Wellbore #1		
Design:	Plan #1 (8-23-11)		

Planned Survey									
Measured Depth (ft)	Inclination (°)	Azimuth (°)	Vertical Depth (ft)	+N/-S (ft)	+E/-W (ft)	Vertical Section (ft)	Dogleg Rate (°/100ft)	Build Rate (°/100ft)	Turn Rate (°/100ft)
4,200.0	12.08	320.09	4,132.5	505.6	-422.8	659.1	0.00	0.00	0.00
4,240.0	12.08	320.09	4,171.6	512.0	-428.2	667.4	0.00	0.00	0.00
4,280.0	12.08	320.09	4,210.7	518.4	-433.6	675.8	0.00	0.00	0.00
4,320.0	12.08	320.09	4,249.9	524.8	-438.9	684.2	0.00	0.00	0.00
4,360.0	12.08	320.09	4,289.0	531.2	-444.3	692.6	0.00	0.00	0.00
4,400.0	12.08	320.09	4,328.1	537.7	-449.7	700.9	0.00	0.00	0.00
4,440.0	12.08	320.09	4,367.2	544.1	-455.0	709.3	0.00	0.00	0.00
4,474.0	12.08	320.09	4,400.4	549.5	-459.6	716.4	0.00	0.00	0.00
4,480.0	11.96	320.09	4,406.3	550.5	-460.4	717.7	2.00	-2.00	0.00
4,520.0	11.16	320.09	4,445.5	556.7	-465.6	725.7	2.00	-2.00	0.00
4,560.0	10.36	320.09	4,484.8	562.4	-470.3	733.1	2.00	-2.00	0.00
4,600.0	9.56	320.09	4,524.2	567.7	-474.8	740.1	2.00	-2.00	0.00
4,640.0	8.76	320.09	4,563.7	572.6	-478.9	746.4	2.00	-2.00	0.00
4,680.0	7.96	320.09	4,603.3	577.0	-482.6	752.2	2.00	-2.00	0.00
4,720.0	7.16	320.09	4,642.9	581.1	-486.0	757.5	2.00	-2.00	0.00
4,760.0	6.36	320.09	4,682.6	584.7	-489.0	762.2	2.00	-2.00	0.00
4,800.0	5.56	320.09	4,722.4	587.9	-491.7	766.4	2.00	-2.00	0.00
4,840.0	4.76	320.09	4,762.2	590.6	-494.0	770.0	2.00	-2.00	0.00
4,880.0	3.96	320.09	4,802.1	593.0	-495.9	773.0	2.00	-2.00	0.00
4,920.0	3.16	320.09	4,842.1	594.9	-497.5	775.5	2.00	-2.00	0.00
4,960.0	2.36	320.09	4,882.0	596.3	-498.8	777.4	2.00	-2.00	0.00
5,000.0	1.56	320.09	4,922.0	597.4	-499.6	778.8	2.00	-2.00	0.00
5,040.0	0.76	320.09	4,962.0	598.0	-500.1	779.6	2.00	-2.00	0.00
5,078.0	0.00	0.00	5,000.0	598.2	-500.3	779.9	2.00	-2.00	0.00
TARGET BHL 663'FNL & 1977'FEL									
5,080.0	0.00	0.00	5,002.0	598.2	-500.3	779.9	0.00	0.00	0.00
5,120.0	0.00	0.00	5,042.0	598.2	-500.3	779.9	0.00	0.00	0.00
5,160.0	0.00	0.00	5,082.0	598.2	-500.3	779.9	0.00	0.00	0.00
5,200.0	0.00	0.00	5,122.0	598.2	-500.3	779.9	0.00	0.00	0.00
5,240.0	0.00	0.00	5,162.0	598.2	-500.3	779.9	0.00	0.00	0.00
5,280.0	0.00	0.00	5,202.0	598.2	-500.3	779.9	0.00	0.00	0.00
5,320.0	0.00	0.00	5,242.0	598.2	-500.3	779.9	0.00	0.00	0.00
5,360.0	0.00	0.00	5,282.0	598.2	-500.3	779.9	0.00	0.00	0.00
5,400.0	0.00	0.00	5,322.0	598.2	-500.3	779.9	0.00	0.00	0.00
5,440.0	0.00	0.00	5,362.0	598.2	-500.3	779.9	0.00	0.00	0.00
5,480.0	0.00	0.00	5,402.0	598.2	-500.3	779.9	0.00	0.00	0.00
5,520.0	0.00	0.00	5,442.0	598.2	-500.3	779.9	0.00	0.00	0.00
5,560.0	0.00	0.00	5,482.0	598.2	-500.3	779.9	0.00	0.00	0.00
5,600.0	0.00	0.00	5,522.0	598.2	-500.3	779.9	0.00	0.00	0.00
5,640.0	0.00	0.00	5,562.0	598.2	-500.3	779.9	0.00	0.00	0.00
5,680.0	0.00	0.00	5,602.0	598.2	-500.3	779.9	0.00	0.00	0.00
5,720.0	0.00	0.00	5,642.0	598.2	-500.3	779.9	0.00	0.00	0.00
5,760.0	0.00	0.00	5,682.0	598.2	-500.3	779.9	0.00	0.00	0.00
5,800.0	0.00	0.00	5,722.0	598.2	-500.3	779.9	0.00	0.00	0.00
5,840.0	0.00	0.00	5,762.0	598.2	-500.3	779.9	0.00	0.00	0.00
5,880.0	0.00	0.00	5,802.0	598.2	-500.3	779.9	0.00	0.00	0.00
5,920.0	0.00	0.00	5,842.0	598.2	-500.3	779.9	0.00	0.00	0.00
5,960.0	0.00	0.00	5,882.0	598.2	-500.3	779.9	0.00	0.00	0.00
6,000.0	0.00	0.00	5,922.0	598.2	-500.3	779.9	0.00	0.00	0.00
6,040.0	0.00	0.00	5,962.0	598.2	-500.3	779.9	0.00	0.00	0.00
6,080.0	0.00	0.00	6,002.0	598.2	-500.3	779.9	0.00	0.00	0.00
6,120.0	0.00	0.00	6,042.0	598.2	-500.3	779.9	0.00	0.00	0.00
6,160.0	0.00	0.00	6,082.0	598.2	-500.3	779.9	0.00	0.00	0.00
6,200.0	0.00	0.00	6,122.0	598.2	-500.3	779.9	0.00	0.00	0.00

Database:	Landmark	Local Co-ordinate Reference:	Well SRC Coyle 31-34D
Company:	Synergy Resources	TVD Reference:	WELL @ 5122.0ft (Original Well Elev)
Project:	SEC.34-T4N-R68W	MD Reference:	WELL @ 5122.0ft (Original Well Elev)
Site:	SRC Coyle 31-34D Pad Sec.34-T4N-R68W	North Reference:	True
Well:	SRC Coyle 31-34D	Survey Calculation Method:	Minimum Curvature
Wellbore:	Wellbore #1		
Design:	Plan #1 (8-23-11)		

Planned Survey									
Measured Depth (ft)	Inclination (°)	Azimuth (°)	Vertical Depth (ft)	+N/-S (ft)	+E/-W (ft)	Vertical Section (ft)	Dogleg Rate (°/100ft)	Build Rate (°/100ft)	Turn Rate (°/100ft)
6,240.0	0.00	0.00	6,162.0	598.2	-500.3	779.9	0.00	0.00	0.00
6,280.0	0.00	0.00	6,202.0	598.2	-500.3	779.9	0.00	0.00	0.00
6,320.0	0.00	0.00	6,242.0	598.2	-500.3	779.9	0.00	0.00	0.00
6,360.0	0.00	0.00	6,282.0	598.2	-500.3	779.9	0.00	0.00	0.00
6,400.0	0.00	0.00	6,322.0	598.2	-500.3	779.9	0.00	0.00	0.00
6,440.0	0.00	0.00	6,362.0	598.2	-500.3	779.9	0.00	0.00	0.00
6,480.0	0.00	0.00	6,402.0	598.2	-500.3	779.9	0.00	0.00	0.00
6,520.0	0.00	0.00	6,442.0	598.2	-500.3	779.9	0.00	0.00	0.00
6,560.0	0.00	0.00	6,482.0	598.2	-500.3	779.9	0.00	0.00	0.00
6,600.0	0.00	0.00	6,522.0	598.2	-500.3	779.9	0.00	0.00	0.00
6,640.0	0.00	0.00	6,562.0	598.2	-500.3	779.9	0.00	0.00	0.00
6,680.0	0.00	0.00	6,602.0	598.2	-500.3	779.9	0.00	0.00	0.00
6,720.0	0.00	0.00	6,642.0	598.2	-500.3	779.9	0.00	0.00	0.00
6,760.0	0.00	0.00	6,682.0	598.2	-500.3	779.9	0.00	0.00	0.00
6,778.0	0.00	0.00	6,700.0	598.2	-500.3	779.9	0.00	0.00	0.00
LEGAL BOX 400' X 400' 663'FNL & 1977'FEL									
6,800.0	0.00	0.00	6,722.0	598.2	-500.3	779.9	0.00	0.00	0.00
6,840.0	0.00	0.00	6,762.0	598.2	-500.3	779.9	0.00	0.00	0.00
6,880.0	0.00	0.00	6,802.0	598.2	-500.3	779.9	0.00	0.00	0.00
6,920.0	0.00	0.00	6,842.0	598.2	-500.3	779.9	0.00	0.00	0.00
6,960.0	0.00	0.00	6,882.0	598.2	-500.3	779.9	0.00	0.00	0.00
7,000.0	0.00	0.00	6,922.0	598.2	-500.3	779.9	0.00	0.00	0.00
7,040.0	0.00	0.00	6,962.0	598.2	-500.3	779.9	0.00	0.00	0.00
7,080.0	0.00	0.00	7,002.0	598.2	-500.3	779.9	0.00	0.00	0.00
7,120.0	0.00	0.00	7,042.0	598.2	-500.3	779.9	0.00	0.00	0.00
7,160.0	0.00	0.00	7,082.0	598.2	-500.3	779.9	0.00	0.00	0.00
7,200.0	0.00	0.00	7,122.0	598.2	-500.3	779.9	0.00	0.00	0.00
7,240.0	0.00	0.00	7,162.0	598.2	-500.3	779.9	0.00	0.00	0.00
7,280.0	0.00	0.00	7,202.0	598.2	-500.3	779.9	0.00	0.00	0.00
7,320.0	0.00	0.00	7,242.0	598.2	-500.3	779.9	0.00	0.00	0.00
7,360.0	0.00	0.00	7,282.0	598.2	-500.3	779.9	0.00	0.00	0.00
7,400.0	0.00	0.00	7,322.0	598.2	-500.3	779.9	0.00	0.00	0.00
7,440.0	0.00	0.00	7,362.0	598.2	-500.3	779.9	0.00	0.00	0.00
7,480.0	0.00	0.00	7,402.0	598.2	-500.3	779.9	0.00	0.00	0.00
7,520.0	0.00	0.00	7,442.0	598.2	-500.3	779.9	0.00	0.00	0.00
7,560.0	0.00	0.00	7,482.0	598.2	-500.3	779.9	0.00	0.00	0.00
7,600.0	0.00	0.00	7,522.0	598.2	-500.3	779.9	0.00	0.00	0.00
7,640.0	0.00	0.00	7,562.0	598.2	-500.3	779.9	0.00	0.00	0.00
7,680.0	0.00	0.00	7,602.0	598.2	-500.3	779.9	0.00	0.00	0.00
7,720.0	0.00	0.00	7,642.0	598.2	-500.3	779.9	0.00	0.00	0.00
7,760.0	0.00	0.00	7,682.0	598.2	-500.3	779.9	0.00	0.00	0.00
7,800.0	0.00	0.00	7,722.0	598.2	-500.3	779.9	0.00	0.00	0.00
7,840.0	0.00	0.00	7,762.0	598.2	-500.3	779.9	0.00	0.00	0.00
7,880.0	0.00	0.00	7,802.0	598.2	-500.3	779.9	0.00	0.00	0.00
7,898.0	0.00	0.00	7,820.0	598.2	-500.3	779.9	0.00	0.00	0.00
J-SAND									

Database:	Landmark	Local Co-ordinate Reference:	Well SRC Coyle 31-34D
Company:	Synergy Resources	TVD Reference:	WELL @ 5122.0ft (Original Well Elev)
Project:	SEC.34-T4N-R68W	MD Reference:	WELL @ 5122.0ft (Original Well Elev)
Site:	SRC Coyle 31-34D Pad Sec.34-T4N-R68W	North Reference:	True
Well:	SRC Coyle 31-34D	Survey Calculation Method:	Minimum Curvature
Wellbore:	Wellbore #1		
Design:	Plan #1 (8-23-11)		

Targets									
Target Name									
- hit/miss target	Dip Angle (°)	Dip Dir. (°)	TVD (ft)	+N/-S (ft)	+E/-W (ft)	Northing (ft)	Easting (ft)	Latitude	Longitude
- Shape									
TARGET BHL 663'FN	0.00	0.00	5,000.0	598.2	-500.3	1,343,566.38	3,143,180.40	40.275352	-104.986847
- plan hits target center									
- Point									
LEGAL BOX 400' X 400'	0.00	0.00	6,700.0	598.2	-500.3	1,343,566.39	3,143,180.41	40.275352	-104.986847
- plan hits target center									
- Rectangle (sides W400.0 H400.0 D1,120.0)									

Casing Points					
Measured Depth (ft)	Vertical Depth (ft)	Name	Casing Diameter (")	Hole Diameter (")	
640.0	640.0	8 5/8"	8-5/8	12-1/4	

Formations					
Measured Depth (ft)	Vertical Depth (ft)	Name	Lithology	Dip (°)	Dip Direction (°)
7,898.0	7,820.0	J-SAND		0.00	



Directional

Synergy Resources

SEC.34-T4N-R68W

SRC Coyle 31-34D Pad Sec.34-T4N-R68W

SRC Coyle 31-34D

Wellbore #1

Plan #1 (8-23-11)

Anticollision Report

25 August, 2011

Company:	Synergy Resources	Local Co-ordinate Reference:	Well SRC Coyle 31-34D
Project:	SEC.34-T4N-R68W	TVD Reference:	WELL @ 5122.0ft (Original Well Elev)
Reference Site:	SRC Coyle 31-34D Pad Sec.34-T4N-R68W	MD Reference:	WELL @ 5122.0ft (Original Well Elev)
Site Error:	0.0ft	North Reference:	True
Reference Well:	SRC Coyle 31-34D	Survey Calculation Method:	Minimum Curvature
Well Error:	0.0ft	Output errors are at	2.00 sigma
Reference Wellbore	Wellbore #1	Database:	Landmark
Reference Design:	Plan #1 (8-23-11)	Offset TVD Reference:	Offset Datum

Reference	Plan #1 (8-23-11)		
Filter type:	NO GLOBAL FILTER: Using user defined selection & filtering criteria		
Interpolation Method:	Stations	Error Model:	ISCWSA
Depth Range:	Unlimited	Scan Method:	Closest Approach 3D
Results Limited by:	Maximum center-center distance of 10,000.0ft	Error Surface:	Elliptical Conic
Warning Levels Evaluated at:	2.00 Sigma		

Survey Tool Program	Date 8/25/2011			
From (ft)	To (ft)	Survey (Wellbore)	Tool Name	Description
0.0	7,898.0	Plan #1 (8-23-11) (Wellbore #1)	MWD	MWD - Standard

Summary						
Site Name	Reference Measured Depth (ft)	Offset Measured Depth (ft)	Distance Between Centres (ft)	Distance Between Ellipses (ft)	Separation Factor	Warning
Offset Well - Wellbore - Design						
SRC Coyle 31-34D Pad Sec.34-T4N-R68W						
SRC Coyle 41-34D - Wellbore #1 - Plan #1 (8-23-11)	750.0	751.0	20.1	17.0	6.387 CC, ES	
SRC Coyle 41-34D - Wellbore #1 - Plan #1 (8-23-11)	800.0	801.0	20.5	17.2	6.093 SF	

Offset Design												Offset Site Error:		0.0 ft
Survey Program: 0-MWD												Offset Well Error:		0.0 ft
Reference		Offset		Semi Major Axis			Distance						Warning	
Measured Depth (ft)	Vertical Depth (ft)	Measured Depth (ft)	Vertical Depth (ft)	Reference (ft)	Offset (ft)	Highside Toolface (°)	Offset Wellbore Centre +N/-S (ft)	+E/-W (ft)	Between Centres (ft)	Between Ellipses (ft)	Minimum Separation (ft)	Separation Factor		
0.0	0.0	1.0	1.0	0.0	0.0	134.96	-14.2	14.2	20.1	20.1	0.00	N/A		
100.0	100.0	101.0	101.0	0.1	0.1	134.96	-14.2	14.2	20.1	19.9	0.23	88.595		
200.0	200.0	201.0	201.0	0.3	0.3	134.96	-14.2	14.2	20.1	19.4	0.68	29.728		
300.0	300.0	301.0	301.0	0.6	0.6	134.96	-14.2	14.2	20.1	19.0	1.13	17.861		
400.0	400.0	401.0	401.0	0.8	0.8	134.96	-14.2	14.2	20.1	18.5	1.58	12.765		
500.0	500.0	501.0	501.0	1.0	1.0	134.96	-14.2	14.2	20.1	18.1	2.03	9.931		
600.0	600.0	601.0	601.0	1.2	1.2	134.96	-14.2	14.2	20.1	17.6	2.47	8.127		
700.0	700.0	701.0	701.0	1.5	1.5	134.96	-14.2	14.2	20.1	17.2	2.92	6.878		
750.0	750.0	751.0	751.0	1.6	1.6	134.96	-14.2	14.2	20.1	17.0	3.15	6.387 CC, ES		
800.0	800.0	801.0	801.0	1.7	1.7	174.98	-14.2	14.2	20.5	17.2	3.37	6.093 SF		
900.0	899.9	900.9	900.9	1.9	1.9	175.70	-14.2	14.2	24.0	20.2	3.82	6.296		
1,000.0	999.7	1,000.6	1,000.6	2.1	2.1	175.84	-14.0	14.6	31.1	26.8	4.26	7.298		
1,100.0	1,099.1	1,099.7	1,099.6	2.4	2.3	172.17	-12.0	17.5	42.2	37.5	4.69	8.996		
1,200.0	1,198.2	1,197.9	1,197.6	2.6	2.6	167.32	-8.2	23.1	57.7	52.6	5.12	11.270		
1,300.0	1,296.6	1,294.9	1,294.1	2.9	2.8	162.83	-2.5	31.3	78.0	72.5	5.57	14.011		
1,354.0	1,349.6	1,346.6	1,345.4	3.1	2.9	160.72	1.3	36.9	91.0	85.2	5.82	15.635		
1,400.0	1,394.5	1,390.3	1,388.6	3.3	3.0	159.11	4.9	42.1	102.9	96.8	6.05	17.006		
1,500.0	1,492.3	1,484.6	1,481.5	3.7	3.3	155.72	13.9	55.3	130.0	123.4	6.57	19.776		
1,600.0	1,590.1	1,577.6	1,572.5	4.1	3.6	152.53	24.4	70.7	159.0	151.9	7.13	22.301		
1,700.0	1,687.9	1,669.1	1,661.5	4.5	4.0	149.57	36.5	88.3	190.1	182.4	7.72	24.617		
1,800.0	1,785.7	1,759.0	1,748.3	4.9	4.3	146.84	49.8	107.9	223.4	215.0	8.35	26.761		
1,900.0	1,883.4	1,850.2	1,835.6	5.3	4.8	144.33	64.7	129.6	258.6	249.6	9.00	28.715		
2,000.0	1,981.2	1,943.2	1,924.6	5.7	5.2	142.35	80.0	151.9	294.3	284.6	9.69	30.383		
2,100.0	2,079.0	2,036.1	2,013.5	6.1	5.7	140.79	95.2	174.2	330.3	319.9	10.37	31.846		
2,200.0	2,176.8	2,129.1	2,102.5	6.6	6.2	139.53	110.5	196.6	366.4	355.3	11.07	33.109		

CC - Min centre to center distance or convergent point, SF - min separation factor, ES - min ellipse separation

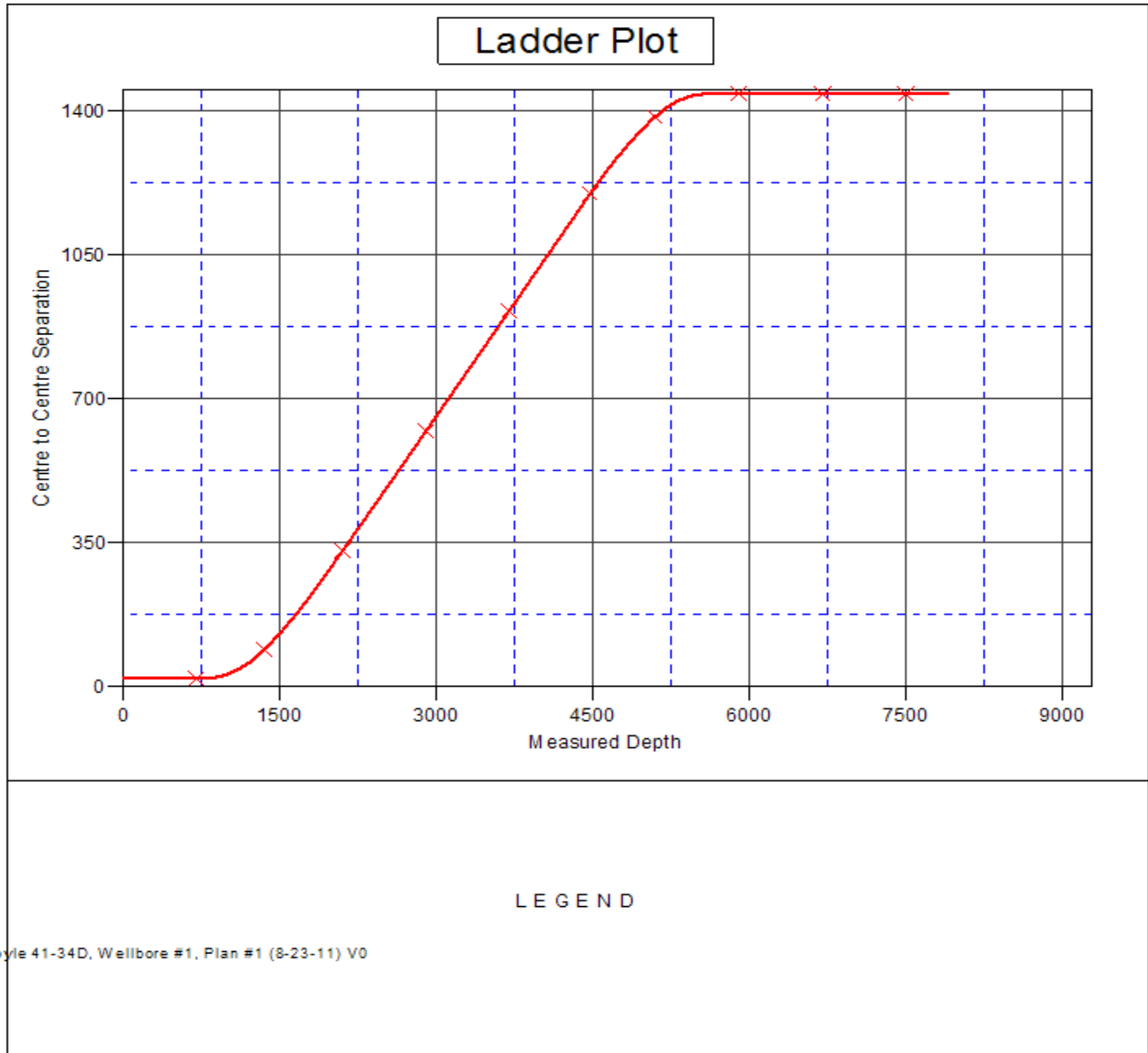
Offset Design		SRC Coyle 31-34D Pad Sec.34-T4N-R68W - SRC Coyle 41-34D - Wellbore #1 - Plan #1 (8-23-11)											Offset Site Error:		0.0 ft
Survey Program: 0-MWD													Offset Well Error:		0.0 ft
Reference		Offset		Semi Major Axis			Distance								
Measured Depth	Vertical Depth	Measured Depth	Vertical Depth	Reference	Offset	Highside Toolface	Offset Wellbore Centre		Between Centres	Between Ellipses	Minimum Separation	Separation Factor	Warning		
(ft)	(ft)	(ft)	(ft)	(ft)	(ft)	(°)	+N/-S (ft)	+E/-W (ft)	(ft)	(ft)	(ft)				
2,300.0	2,274.6	2,222.1	2,191.4	7.0	6.7	138.50	125.7	218.9	402.7	390.9	11.77	34.211			
2,400.0	2,372.4	2,315.0	2,280.4	7.5	7.2	137.65	141.0	241.2	439.0	426.5	12.48	35.180			
2,500.0	2,470.2	2,408.0	2,369.3	7.9	7.8	136.92	156.3	263.5	475.5	462.3	13.19	36.036			
2,600.0	2,567.9	2,501.0	2,458.3	8.3	8.3	136.29	171.5	285.9	511.9	498.0	13.91	36.797			
2,700.0	2,665.7	2,593.9	2,547.2	8.8	8.8	135.75	186.8	308.2	548.5	533.8	14.64	37.477			
2,800.0	2,763.5	2,686.9	2,636.2	9.2	9.3	135.28	202.1	330.5	585.1	569.7	15.36	38.087			
2,900.0	2,861.3	2,779.9	2,725.1	9.7	9.9	134.86	217.3	352.8	621.7	605.6	16.09	38.637			
3,000.0	2,959.1	2,872.9	2,814.1	10.1	10.4	134.48	232.6	375.1	658.3	641.5	16.82	39.136			
3,100.0	3,056.9	2,965.8	2,903.0	10.6	11.0	134.15	247.9	397.5	694.9	677.4	17.55	39.589			
3,200.0	3,154.7	3,058.8	2,992.0	11.0	11.5	133.85	263.1	419.8	731.6	713.3	18.29	40.004			
3,300.0	3,252.4	3,151.8	3,080.9	11.5	12.1	133.58	278.4	442.1	768.3	749.3	19.03	40.383			
3,400.0	3,350.2	3,244.7	3,169.9	11.9	12.6	133.33	293.7	464.4	805.0	785.2	19.76	40.732			
3,500.0	3,448.0	3,337.7	3,258.8	12.4	13.1	133.11	308.9	486.7	841.7	821.2	20.50	41.054			
3,600.0	3,545.8	3,430.7	3,347.8	12.8	13.7	132.90	324.2	509.1	878.4	857.2	21.24	41.351			
3,700.0	3,643.6	3,523.6	3,436.7	13.3	14.2	132.71	339.4	531.4	915.1	893.2	21.98	41.627			
3,800.0	3,741.4	3,616.6	3,525.7	13.7	14.8	132.54	354.7	553.7	951.9	929.2	22.73	41.883			
3,900.0	3,839.2	3,709.6	3,614.6	14.2	15.4	132.38	370.0	576.0	988.6	965.2	23.47	42.122			
4,000.0	3,936.9	3,802.6	3,703.6	14.6	15.9	132.23	385.2	598.4	1,025.4	1,001.2	24.21	42.345			
4,100.0	4,034.7	3,895.5	3,792.5	15.1	16.5	132.09	400.5	620.7	1,062.1	1,037.2	24.96	42.554			
4,200.0	4,132.5	3,988.5	3,881.5	15.5	17.0	131.96	415.8	643.0	1,098.9	1,073.2	25.71	42.749			
4,300.0	4,230.3	4,081.5	3,970.4	16.0	17.6	131.83	431.0	665.3	1,135.7	1,109.2	26.45	42.932			
4,400.0	4,328.1	4,174.4	4,059.4	16.4	18.1	131.72	446.3	687.6	1,172.4	1,145.2	27.20	43.105			
4,474.0	4,400.4	4,243.2	4,125.2	16.8	18.5	131.64	457.6	704.2	1,199.6	1,171.9	27.75	43.226			
4,500.0	4,425.9	4,267.4	4,148.3	16.9	18.7	131.76	461.6	710.0	1,209.1	1,181.2	27.97	43.232			
4,600.0	4,524.2	4,361.0	4,237.8	17.2	19.2	132.12	476.9	732.4	1,244.3	1,215.5	28.74	43.290			
4,700.0	4,623.1	4,455.2	4,327.9	17.5	19.8	132.33	492.4	755.0	1,277.2	1,247.7	29.48	43.331			
4,800.0	4,722.4	4,549.9	4,418.6	17.7	20.4	132.39	507.9	777.8	1,308.0	1,277.8	30.16	43.361			
4,900.0	4,822.1	4,645.0	4,509.6	17.9	20.9	132.32	523.6	800.6	1,336.6	1,305.8	30.81	43.388			
5,000.0	4,922.0	4,740.5	4,600.9	18.1	21.5	132.13	539.2	823.5	1,363.0	1,331.7	31.40	43.415			
5,078.0	5,000.0	4,818.9	4,675.9	18.2	22.0	91.97	552.1	842.4	1,382.2	1,350.4	31.83	43.427			
5,100.0	5,022.0	4,853.8	4,709.4	18.2	22.1	91.72	557.6	850.5	1,387.3	1,355.3	31.97	43.390			
5,200.0	5,122.0	5,015.5	4,866.0	18.3	22.8	90.74	580.3	883.7	1,407.7	1,375.2	32.58	43.212			
5,300.0	5,222.0	5,181.4	5,028.8	18.5	23.4	89.99	598.4	910.1	1,423.7	1,390.6	33.12	42.988			
5,400.0	5,322.0	5,350.7	5,196.5	18.6	23.9	89.47	611.3	929.0	1,434.9	1,401.3	33.61	42.696			
5,500.0	5,422.0	5,522.0	5,367.3	18.7	24.2	89.18	618.7	939.8	1,441.3	1,407.2	34.05	42.333			
5,600.0	5,522.0	5,677.7	5,523.0	18.9	24.4	89.12	620.4	942.3	1,442.8	1,408.4	34.41	41.923			
5,700.0	5,622.0	5,777.7	5,623.0	19.0	24.5	89.12	620.4	942.3	1,442.8	1,408.1	34.71	41.569			
5,800.0	5,722.0	5,877.7	5,723.0	19.1	24.6	89.12	620.4	942.3	1,442.8	1,407.8	35.01	41.214			
5,900.0	5,822.0	5,977.7	5,823.0	19.3	24.7	89.12	620.4	942.3	1,442.8	1,407.5	35.31	40.862			
6,000.0	5,922.0	6,077.7	5,923.0	19.4	24.8	89.12	620.4	942.3	1,442.8	1,407.2	35.61	40.512			
6,100.0	6,022.0	6,177.7	6,023.0	19.6	24.9	89.12	620.4	942.3	1,442.8	1,406.9	35.92	40.165			
6,200.0	6,122.0	6,277.7	6,123.0	19.7	25.0	89.12	620.4	942.3	1,442.8	1,406.5	36.23	39.821			
6,300.0	6,222.0	6,377.7	6,223.0	19.9	25.1	89.12	620.4	942.3	1,442.8	1,406.2	36.55	39.479			
6,400.0	6,322.0	6,477.7	6,323.0	20.0	25.3	89.12	620.4	942.3	1,442.8	1,405.9	36.86	39.140			
6,500.0	6,422.0	6,577.7	6,423.0	20.2	25.4	89.12	620.4	942.3	1,442.8	1,405.6	37.18	38.804			
6,600.0	6,522.0	6,677.7	6,523.0	20.3	25.5	89.12	620.4	942.3	1,442.8	1,405.3	37.50	38.471			
6,700.0	6,622.0	6,777.7	6,623.0	20.5	25.6	89.12	620.4	942.3	1,442.8	1,405.0	37.83	38.141			
6,800.0	6,722.0	6,877.7	6,723.0	20.7	25.8	89.12	620.4	942.3	1,442.8	1,404.6	38.15	37.814			
6,900.0	6,822.0	6,977.7	6,823.0	20.8	25.9	89.12	620.4	942.3	1,442.8	1,404.3	38.48	37.491			
7,000.0	6,922.0	7,077.7	6,923.0	21.0	26.0	89.12	620.4	942.3	1,442.8	1,404.0	38.82	37.170			
7,100.0	7,022.0	7,177.7	7,023.0	21.1	26.1	89.12	620.4	942.3	1,442.8	1,403.6	39.15	36.853			
7,200.0	7,122.0	7,277.7	7,123.0	21.3	26.3	89.12	620.4	942.3	1,442.8	1,403.3	39.49	36.539			

Company:	Synergy Resources	Local Co-ordinate Reference:	Well SRC Coyle 31-34D
Project:	SEC.34-T4N-R68W	TVD Reference:	WELL @ 5122.0ft (Original Well Elev)
Reference Site:	SRC Coyle 31-34D Pad Sec.34-T4N-R68W	MD Reference:	WELL @ 5122.0ft (Original Well Elev)
Site Error:	0.0ft	North Reference:	True
Reference Well:	SRC Coyle 31-34D	Survey Calculation Method:	Minimum Curvature
Well Error:	0.0ft	Output errors are at	2.00 sigma
Reference Wellbore	Wellbore #1	Database:	Landmark
Reference Design:	Plan #1 (8-23-11)	Offset TVD Reference:	Offset Datum

Offset Design												Offset Site Error:	0.0 ft
SRC Coyle 31-34D Pad Sec.34-T4N-R68W - SRC Coyle 41-34D - Wellbore #1 - Plan #1 (8-23-11)												Offset Well Error:	0.0 ft
Survey Program: 0-MWD													
Reference		Offset		Semi Major Axis			Distance						
Measured Depth (ft)	Vertical Depth (ft)	Measured Depth (ft)	Vertical Depth (ft)	Reference (ft)	Offset (ft)	Highside Toolface (°)	Offset Wellbore Centre +N/-S (ft)	+E/-W (ft)	Between Centres (ft)	Between Ellipses (ft)	Minimum Separation (ft)	Separation Factor	Warning
7,300.0	7,222.0	7,377.7	7,223.0	21.5	26.4	89.12	620.4	942.3	1,442.8	1,403.0	39.82	36.228	
7,400.0	7,322.0	7,477.7	7,323.0	21.6	26.5	89.12	620.4	942.3	1,442.8	1,402.6	40.17	35.921	
7,500.0	7,422.0	7,577.7	7,423.0	21.8	26.7	89.12	620.4	942.3	1,442.8	1,402.3	40.51	35.617	
7,600.0	7,522.0	7,677.7	7,523.0	21.9	26.8	89.12	620.4	942.3	1,442.8	1,401.9	40.85	35.316	
7,700.0	7,622.0	7,777.7	7,623.0	22.1	26.9	89.12	620.4	942.3	1,442.8	1,401.6	41.20	35.019	
7,800.0	7,722.0	7,877.7	7,723.0	22.3	27.1	89.12	620.4	942.3	1,442.8	1,401.2	41.55	34.724	
7,865.0	7,787.0	7,942.7	7,788.0	22.4	27.2	89.12	620.4	942.3	1,442.8	1,401.0	41.78	34.535	
7,898.0	7,820.0	7,974.7	7,820.0	22.4	27.2	89.12	620.4	942.3	1,442.8	1,400.9	41.89	34.441	

Company:	Synergy Resources	Local Co-ordinate Reference:	Well SRC Coyle 31-34D
Project:	SEC.34-T4N-R68W	TVD Reference:	WELL @ 5122.0ft (Original Well Elev)
Reference Site:	SRC Coyle 31-34D Pad Sec.34-T4N-R68W	MD Reference:	WELL @ 5122.0ft (Original Well Elev)
Site Error:	0.0ft	North Reference:	True
Reference Well:	SRC Coyle 31-34D	Survey Calculation Method:	Minimum Curvature
Well Error:	0.0ft	Output errors are at	2.00 sigma
Reference Wellbore	Wellbore #1	Database:	Landmark
Reference Design:	Plan #1 (8-23-11)	Offset TVD Reference:	Offset Datum

Reference Depths are relative to WELL @ 5122.0ft (Original Well Elev) Coordinates are relative to: SRC Coyle 31-34D
 Offset Depths are relative to Offset Datum Coordinate System is US State Plane 1983, Colorado Northern Zone
 Central Meridian is -105.500000 ° Grid Convergence at Surface is: 0.33°



Company:	Synergy Resources	Local Co-ordinate Reference:	Well SRC Coyle 31-34D
Project:	SEC.34-T4N-R68W	TVD Reference:	WELL @ 5122.0ft (Original Well Elev)
Reference Site:	SRC Coyle 31-34D Pad Sec.34-T4N-R68W	MD Reference:	WELL @ 5122.0ft (Original Well Elev)
Site Error:	0.0ft	North Reference:	True
Reference Well:	SRC Coyle 31-34D	Survey Calculation Method:	Minimum Curvature
Well Error:	0.0ft	Output errors are at	2.00 sigma
Reference Wellbore	Wellbore #1	Database:	Landmark
Reference Design:	Plan #1 (8-23-11)	Offset TVD Reference:	Offset Datum

Reference Depths are relative to WELL @ 5122.0ft (Original Well Elev) Coordinates are relative to: SRC Coyle 31-34D
Offset Depths are relative to Offset Datum Coordinate System is US State Plane 1983, Colorado Northern Zone
Central Meridian is -105.500000 ° Grid Convergence at Surface is: 0.33°

