

# ENSIGN

## Directional

### Well Name: SRC Coyle 34ND

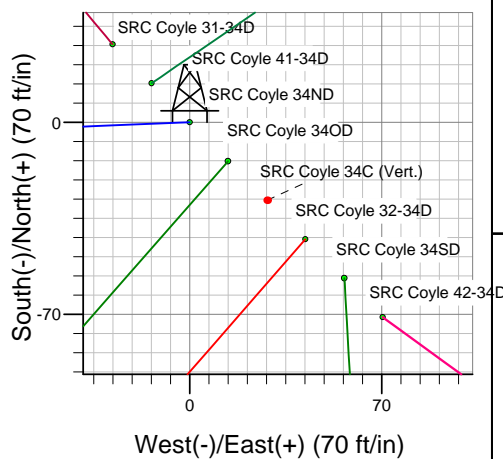
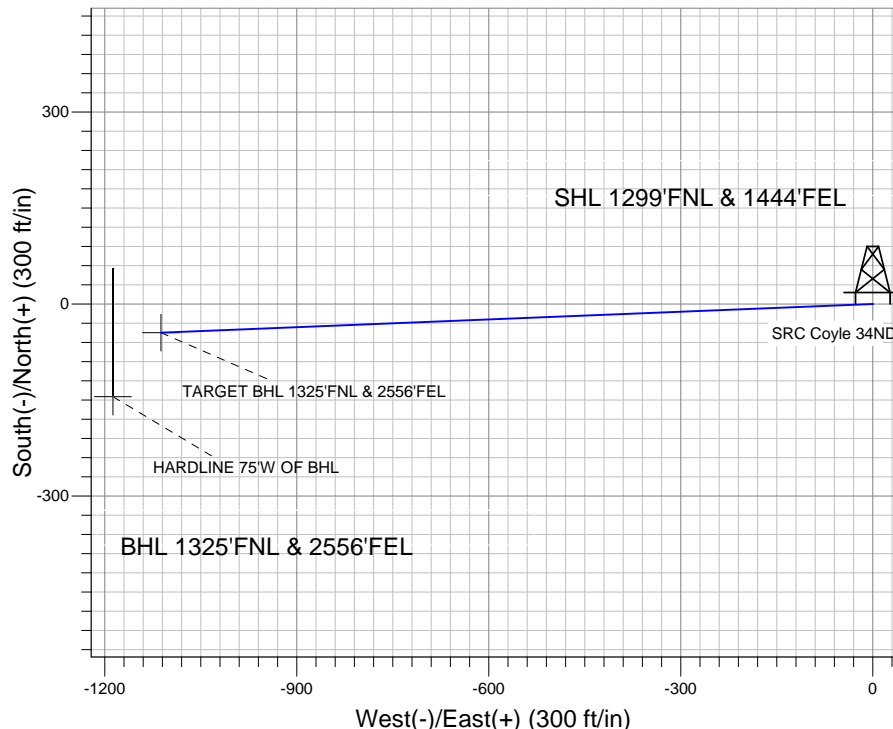
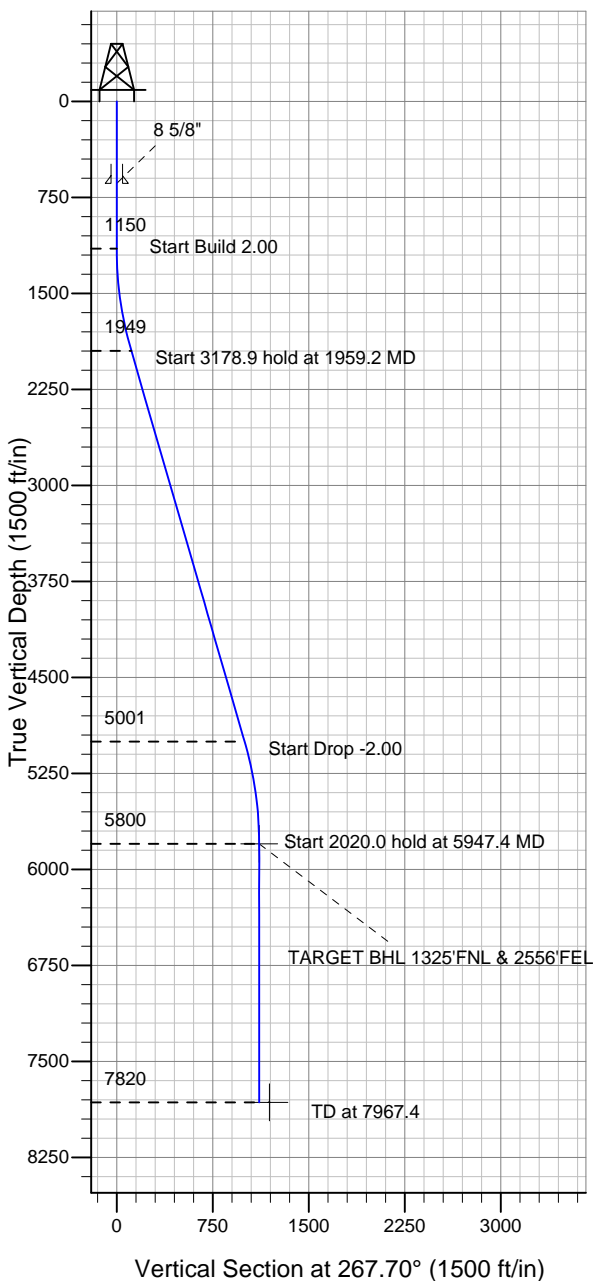
Surface Location: SRC Coyle 31-34D Pad Sec.34-T4N-R68W  
 North American Datum 1983 US State Plane 1983 Colorado Northern Zone

Ground Elevation: 5110.0

+N/-S	+E/-W	Northing	Easting	Latitude	Longitude	Slot
0.0	0.0	1342942.87	3143712.50	40.273632	-104.984953	

Original Well Elev WELL @ 5123.0ft (Original Well Elev)

### Synergy Resources



SRC Coyle 31-34D Pad Sec.34-T4N-R68W  
 SRC Coyle 34ND  
 Plan #1 (8-23-11)  
 8:01, August 25 2011



Azimuths to True North  
 Magnetic North: 8.94°

Magnetic Field  
 Strength: 53018.8snT  
 Dip Angle: 66.91°  
 Date: 8/23/2011  
 Model: IGRF2010

### WELLBORE TARGET DETAILS (LAT/LONG)

Name	TVD	+N/-S	+E/-W	Latitude	Longitude	Shape
TARGET BHL 1325'FNL & 2556'FEL	5800.0	-44.8	-1112.3	40.273509	-104.988939	Point
HARDLINE 75°W OF BHL	7820.0	-144.8	-1187.3	40.273234	-104.989208	Polygon

### SECTION DETAILS

Sec	MD	Inc	Azi	TVD	+N/-S	+E/-W	DLeg	TFace	VSec	Target
1	0.0	0.00	0.00	0.0	0.0	0.0	0.00	0.00	0.0	
2	1150.0	0.00	0.00	1150.0	0.0	0.0	0.00	0.00	0.0	
3	1959.2	16.18	267.70	1948.5	-4.6	-113.4	2.00	267.70	113.5	
4	5138.2	16.18	267.70	5001.5	-40.2	-998.8	0.00	0.00	999.6	
5	5947.4	0.00	0.00	5800.0	-44.8	-1112.3	2.00	180.00	1113.2	TARGET BHL 1325'FNL & 2556'FEL
6	7967.4	0.00	0.00	7820.0	-44.8	-1112.3	0.00	0.00	1113.2	



## **Directional**

### **Synergy Resources**

**SEC.34-T4N-R68W**

**SRC Coyle 31-34D Pad Sec.34-T4N-R68W**

**SRC Coyle 34ND**

**Wellbore #1**

**Plan: Plan #1 (8-23-11)**

### **Standard Planning Report**

**25 August, 2011**

Plan Sections										
Measured Depth (ft)	Inclination (°)	Azimuth (°)	Vertical Depth (ft)	+N/-S (ft)	+E/-W (ft)	Dogleg Rate (°/100ft)	Build Rate (°/100ft)	Turn Rate (°/100ft)	TFO (°)	Target
0.0	0.00	0.00	0.0	0.0	0.0	0.00	0.00	0.00	0.00	
1,150.0	0.00	0.00	1,150.0	0.0	0.0	0.00	0.00	0.00	0.00	
1,959.2	16.18	267.70	1,948.5	-4.6	-113.4	2.00	2.00	0.00	267.70	
5,138.2	16.18	267.70	5,001.5	-40.2	-998.8	0.00	0.00	0.00	0.00	
5,947.4	0.00	0.00	5,800.0	-44.8	-1,112.3	2.00	-2.00	0.00	180.00	TARGET BHL 1325
7,967.4	0.00	0.00	7,820.0	-44.8	-1,112.3	0.00	0.00	0.00	0.00	

<b>Database:</b>	Landmark	<b>Local Co-ordinate Reference:</b>	Well SRC Coyle 34ND
<b>Company:</b>	Synergy Resources	<b>TVD Reference:</b>	WELL @ 5123.0ft (Original Well Elev)
<b>Project:</b>	SEC.34-T4N-R68W	<b>MD Reference:</b>	WELL @ 5123.0ft (Original Well Elev)
<b>Site:</b>	SRC Coyle 31-34D Pad Sec.34-T4N-R68W	<b>North Reference:</b>	True
<b>Well:</b>	SRC Coyle 34ND	<b>Survey Calculation Method:</b>	Minimum Curvature
<b>Wellbore:</b>	Wellbore #1		
<b>Design:</b>	Plan #1 (8-23-11)		

Planned Survey									
Measured Depth (ft)	Inclination (°)	Azimuth (°)	Vertical Depth (ft)	+N/-S (ft)	+E/-W (ft)	Vertical Section (ft)	Dogleg Rate (°/100ft)	Build Rate (°/100ft)	Turn Rate (°/100ft)
0.0	0.00	0.00	0.0	0.0	0.0	0.0	0.00	0.00	0.00
40.0	0.00	0.00	40.0	0.0	0.0	0.0	0.00	0.00	0.00
80.0	0.00	0.00	80.0	0.0	0.0	0.0	0.00	0.00	0.00
120.0	0.00	0.00	120.0	0.0	0.0	0.0	0.00	0.00	0.00
160.0	0.00	0.00	160.0	0.0	0.0	0.0	0.00	0.00	0.00
200.0	0.00	0.00	200.0	0.0	0.0	0.0	0.00	0.00	0.00
240.0	0.00	0.00	240.0	0.0	0.0	0.0	0.00	0.00	0.00
280.0	0.00	0.00	280.0	0.0	0.0	0.0	0.00	0.00	0.00
320.0	0.00	0.00	320.0	0.0	0.0	0.0	0.00	0.00	0.00
360.0	0.00	0.00	360.0	0.0	0.0	0.0	0.00	0.00	0.00
400.0	0.00	0.00	400.0	0.0	0.0	0.0	0.00	0.00	0.00
440.0	0.00	0.00	440.0	0.0	0.0	0.0	0.00	0.00	0.00
480.0	0.00	0.00	480.0	0.0	0.0	0.0	0.00	0.00	0.00
520.0	0.00	0.00	520.0	0.0	0.0	0.0	0.00	0.00	0.00
560.0	0.00	0.00	560.0	0.0	0.0	0.0	0.00	0.00	0.00
600.0	0.00	0.00	600.0	0.0	0.0	0.0	0.00	0.00	0.00
640.0	0.00	0.00	640.0	0.0	0.0	0.0	0.00	0.00	0.00
8 5/8"									
680.0	0.00	0.00	680.0	0.0	0.0	0.0	0.00	0.00	0.00
720.0	0.00	0.00	720.0	0.0	0.0	0.0	0.00	0.00	0.00
760.0	0.00	0.00	760.0	0.0	0.0	0.0	0.00	0.00	0.00
800.0	0.00	0.00	800.0	0.0	0.0	0.0	0.00	0.00	0.00
840.0	0.00	0.00	840.0	0.0	0.0	0.0	0.00	0.00	0.00
880.0	0.00	0.00	880.0	0.0	0.0	0.0	0.00	0.00	0.00
920.0	0.00	0.00	920.0	0.0	0.0	0.0	0.00	0.00	0.00
960.0	0.00	0.00	960.0	0.0	0.0	0.0	0.00	0.00	0.00
1,000.0	0.00	0.00	1,000.0	0.0	0.0	0.0	0.00	0.00	0.00
1,040.0	0.00	0.00	1,040.0	0.0	0.0	0.0	0.00	0.00	0.00
1,080.0	0.00	0.00	1,080.0	0.0	0.0	0.0	0.00	0.00	0.00
1,120.0	0.00	0.00	1,120.0	0.0	0.0	0.0	0.00	0.00	0.00
1,150.0	0.00	0.00	1,150.0	0.0	0.0	0.0	0.00	0.00	0.00
1,160.0	0.20	267.70	1,160.0	0.0	0.0	0.0	2.00	2.00	0.00
1,200.0	1.00	267.70	1,200.0	0.0	-0.4	0.4	2.00	2.00	0.00
1,240.0	1.80	267.70	1,240.0	-0.1	-1.4	1.4	2.00	2.00	0.00
1,280.0	2.60	267.70	1,280.0	-0.1	-2.9	2.9	2.00	2.00	0.00
1,320.0	3.40	267.70	1,319.9	-0.2	-5.0	5.0	2.00	2.00	0.00
1,360.0	4.20	267.70	1,359.8	-0.3	-7.7	7.7	2.00	2.00	0.00
1,400.0	5.00	267.70	1,399.7	-0.4	-10.9	10.9	2.00	2.00	0.00
1,440.0	5.80	267.70	1,439.5	-0.6	-14.7	14.7	2.00	2.00	0.00
1,480.0	6.60	267.70	1,479.3	-0.8	-19.0	19.0	2.00	2.00	0.00
1,520.0	7.40	267.70	1,519.0	-1.0	-23.8	23.9	2.00	2.00	0.00
1,560.0	8.20	267.70	1,558.6	-1.2	-29.3	29.3	2.00	2.00	0.00
1,600.0	9.00	267.70	1,598.2	-1.4	-35.2	35.3	2.00	2.00	0.00
1,640.0	9.80	267.70	1,637.6	-1.7	-41.8	41.8	2.00	2.00	0.00
1,680.0	10.60	267.70	1,677.0	-2.0	-48.8	48.9	2.00	2.00	0.00
1,720.0	11.40	267.70	1,716.2	-2.3	-56.5	56.5	2.00	2.00	0.00
1,760.0	12.20	267.70	1,755.4	-2.6	-64.6	64.7	2.00	2.00	0.00
1,800.0	13.00	267.70	1,794.4	-3.0	-73.4	73.4	2.00	2.00	0.00
1,840.0	13.80	267.70	1,833.3	-3.3	-82.6	82.7	2.00	2.00	0.00
1,880.0	14.60	267.70	1,872.1	-3.7	-92.4	92.5	2.00	2.00	0.00
1,920.0	15.40	267.70	1,910.8	-4.1	-102.8	102.9	2.00	2.00	0.00
1,959.2	16.18	267.70	1,948.5	-4.6	-113.4	113.5	2.00	2.00	0.00
1,960.0	16.18	267.70	1,949.3	-4.6	-113.7	113.7	0.00	0.00	0.00
2,000.0	16.18	267.70	1,987.7	-5.0	-124.8	124.9	0.00	0.00	0.00

<b>Database:</b>	Landmark	<b>Local Co-ordinate Reference:</b>	Well SRC Coyle 34ND
<b>Company:</b>	Synergy Resources	<b>TVD Reference:</b>	WELL @ 5123.0ft (Original Well Elev)
<b>Project:</b>	SEC.34-T4N-R68W	<b>MD Reference:</b>	WELL @ 5123.0ft (Original Well Elev)
<b>Site:</b>	SRC Coyle 31-34D Pad Sec.34-T4N-R68W	<b>North Reference:</b>	True
<b>Well:</b>	SRC Coyle 34ND	<b>Survey Calculation Method:</b>	Minimum Curvature
<b>Wellbore:</b>	Wellbore #1		
<b>Design:</b>	Plan #1 (8-23-11)		

Planned Survey										
Measured Depth (ft)	Inclination (°)	Azimuth (°)	Vertical Depth (ft)	+N/-S (ft)	+E/-W (ft)	Vertical Section (ft)	Dogleg Rate (°/100ft)	Build Rate (°/100ft)	Turn Rate (°/100ft)	
2,040.0	16.18	267.70	2,026.1	-5.5	-135.9	136.0	0.00	0.00	0.00	
2,080.0	16.18	267.70	2,064.5	-5.9	-147.1	147.2	0.00	0.00	0.00	
2,120.0	16.18	267.70	2,102.9	-6.4	-158.2	158.3	0.00	0.00	0.00	
2,160.0	16.18	267.70	2,141.3	-6.8	-169.4	169.5	0.00	0.00	0.00	
2,200.0	16.18	267.70	2,179.7	-7.3	-180.5	180.6	0.00	0.00	0.00	
2,240.0	16.18	267.70	2,218.2	-7.7	-191.6	191.8	0.00	0.00	0.00	
2,280.0	16.18	267.70	2,256.6	-8.2	-202.8	202.9	0.00	0.00	0.00	
2,320.0	16.18	267.70	2,295.0	-8.6	-213.9	214.1	0.00	0.00	0.00	
2,360.0	16.18	267.70	2,333.4	-9.1	-225.1	225.2	0.00	0.00	0.00	
2,400.0	16.18	267.70	2,371.8	-9.5	-236.2	236.4	0.00	0.00	0.00	
2,440.0	16.18	267.70	2,410.2	-10.0	-247.3	247.5	0.00	0.00	0.00	
2,480.0	16.18	267.70	2,448.6	-10.4	-258.5	258.7	0.00	0.00	0.00	
2,520.0	16.18	267.70	2,487.1	-10.9	-269.6	269.8	0.00	0.00	0.00	
2,560.0	16.18	267.70	2,525.5	-11.3	-280.8	281.0	0.00	0.00	0.00	
2,600.0	16.18	267.70	2,563.9	-11.7	-291.9	292.1	0.00	0.00	0.00	
2,640.0	16.18	267.70	2,602.3	-12.2	-303.0	303.3	0.00	0.00	0.00	
2,680.0	16.18	267.70	2,640.7	-12.6	-314.2	314.4	0.00	0.00	0.00	
2,720.0	16.18	267.70	2,679.1	-13.1	-325.3	325.6	0.00	0.00	0.00	
2,760.0	16.18	267.70	2,717.5	-13.5	-336.5	336.7	0.00	0.00	0.00	
2,800.0	16.18	267.70	2,756.0	-14.0	-347.6	347.9	0.00	0.00	0.00	
2,840.0	16.18	267.70	2,794.4	-14.4	-358.7	359.0	0.00	0.00	0.00	
2,880.0	16.18	267.70	2,832.8	-14.9	-369.9	370.2	0.00	0.00	0.00	
2,920.0	16.18	267.70	2,871.2	-15.3	-381.0	381.3	0.00	0.00	0.00	
2,960.0	16.18	267.70	2,909.6	-15.8	-392.2	392.5	0.00	0.00	0.00	
3,000.0	16.18	267.70	2,948.0	-16.2	-403.3	403.6	0.00	0.00	0.00	
3,040.0	16.18	267.70	2,986.4	-16.7	-414.4	414.8	0.00	0.00	0.00	
3,080.0	16.18	267.70	3,024.9	-17.1	-425.6	425.9	0.00	0.00	0.00	
3,120.0	16.18	267.70	3,063.3	-17.6	-436.7	437.1	0.00	0.00	0.00	
3,160.0	16.18	267.70	3,101.7	-18.0	-447.9	448.2	0.00	0.00	0.00	
3,200.0	16.18	267.70	3,140.1	-18.5	-459.0	459.4	0.00	0.00	0.00	
3,240.0	16.18	267.70	3,178.5	-18.9	-470.2	470.5	0.00	0.00	0.00	
3,280.0	16.18	267.70	3,216.9	-19.4	-481.3	481.7	0.00	0.00	0.00	
3,320.0	16.18	267.70	3,255.4	-19.8	-492.4	492.8	0.00	0.00	0.00	
3,360.0	16.18	267.70	3,293.8	-20.3	-503.6	504.0	0.00	0.00	0.00	
3,400.0	16.18	267.70	3,332.2	-20.7	-514.7	515.1	0.00	0.00	0.00	
3,440.0	16.18	267.70	3,370.6	-21.2	-525.9	526.3	0.00	0.00	0.00	
3,480.0	16.18	267.70	3,409.0	-21.6	-537.0	537.4	0.00	0.00	0.00	
3,520.0	16.18	267.70	3,447.4	-22.1	-548.1	548.6	0.00	0.00	0.00	
3,560.0	16.18	267.70	3,485.8	-22.5	-559.3	559.7	0.00	0.00	0.00	
3,600.0	16.18	267.70	3,524.3	-23.0	-570.4	570.9	0.00	0.00	0.00	
3,640.0	16.18	267.70	3,562.7	-23.4	-581.6	582.0	0.00	0.00	0.00	
3,680.0	16.18	267.70	3,601.1	-23.9	-592.7	593.2	0.00	0.00	0.00	
3,720.0	16.18	267.70	3,639.5	-24.3	-603.8	604.3	0.00	0.00	0.00	
3,760.0	16.18	267.70	3,677.9	-24.8	-615.0	615.5	0.00	0.00	0.00	
3,800.0	16.18	267.70	3,716.3	-25.2	-626.1	626.6	0.00	0.00	0.00	
3,840.0	16.18	267.70	3,754.7	-25.6	-637.3	637.8	0.00	0.00	0.00	
3,880.0	16.18	267.70	3,793.2	-26.1	-648.4	648.9	0.00	0.00	0.00	
3,920.0	16.18	267.70	3,831.6	-26.5	-659.5	660.1	0.00	0.00	0.00	
3,960.0	16.18	267.70	3,870.0	-27.0	-670.7	671.2	0.00	0.00	0.00	
4,000.0	16.18	267.70	3,908.4	-27.4	-681.8	682.4	0.00	0.00	0.00	
4,040.0	16.18	267.70	3,946.8	-27.9	-693.0	693.5	0.00	0.00	0.00	
4,080.0	16.18	267.70	3,985.2	-28.3	-704.1	704.7	0.00	0.00	0.00	
4,120.0	16.18	267.70	4,023.6	-28.8	-715.2	715.8	0.00	0.00	0.00	
4,160.0	16.18	267.70	4,062.1	-29.2	-726.4	727.0	0.00	0.00	0.00	

<b>Database:</b>	Landmark	<b>Local Co-ordinate Reference:</b>	Well SRC Coyle 34ND
<b>Company:</b>	Synergy Resources	<b>TVD Reference:</b>	WELL @ 5123.0ft (Original Well Elev)
<b>Project:</b>	SEC.34-T4N-R68W	<b>MD Reference:</b>	WELL @ 5123.0ft (Original Well Elev)
<b>Site:</b>	SRC Coyle 31-34D Pad Sec.34-T4N-R68W	<b>North Reference:</b>	True
<b>Well:</b>	SRC Coyle 34ND	<b>Survey Calculation Method:</b>	Minimum Curvature
<b>Wellbore:</b>	Wellbore #1		
<b>Design:</b>	Plan #1 (8-23-11)		

Planned Survey									
Measured Depth (ft)	Inclination (°)	Azimuth (°)	Vertical Depth (ft)	+N/-S (ft)	+E/-W (ft)	Vertical Section (ft)	Dogleg Rate (°/100ft)	Build Rate (°/100ft)	Turn Rate (°/100ft)
4,200.0	16.18	267.70	4,100.5	-29.7	-737.5	738.1	0.00	0.00	0.00
4,240.0	16.18	267.70	4,138.9	-30.1	-748.7	749.3	0.00	0.00	0.00
4,280.0	16.18	267.70	4,177.3	-30.6	-759.8	760.4	0.00	0.00	0.00
4,320.0	16.18	267.70	4,215.7	-31.0	-770.9	771.6	0.00	0.00	0.00
4,360.0	16.18	267.70	4,254.1	-31.5	-782.1	782.7	0.00	0.00	0.00
4,400.0	16.18	267.70	4,292.5	-31.9	-793.2	793.9	0.00	0.00	0.00
4,440.0	16.18	267.70	4,331.0	-32.4	-804.4	805.0	0.00	0.00	0.00
4,480.0	16.18	267.70	4,369.4	-32.8	-815.5	816.2	0.00	0.00	0.00
4,520.0	16.18	267.70	4,407.8	-33.3	-826.6	827.3	0.00	0.00	0.00
4,560.0	16.18	267.70	4,446.2	-33.7	-837.8	838.5	0.00	0.00	0.00
4,600.0	16.18	267.70	4,484.6	-34.2	-848.9	849.6	0.00	0.00	0.00
4,640.0	16.18	267.70	4,523.0	-34.6	-860.1	860.8	0.00	0.00	0.00
4,680.0	16.18	267.70	4,561.5	-35.1	-871.2	871.9	0.00	0.00	0.00
4,720.0	16.18	267.70	4,599.9	-35.5	-882.3	883.1	0.00	0.00	0.00
4,760.0	16.18	267.70	4,638.3	-36.0	-893.5	894.2	0.00	0.00	0.00
4,800.0	16.18	267.70	4,676.7	-36.4	-904.6	905.4	0.00	0.00	0.00
4,840.0	16.18	267.70	4,715.1	-36.9	-915.8	916.5	0.00	0.00	0.00
4,880.0	16.18	267.70	4,753.5	-37.3	-926.9	927.7	0.00	0.00	0.00
4,920.0	16.18	267.70	4,791.9	-37.8	-938.0	938.8	0.00	0.00	0.00
4,960.0	16.18	267.70	4,830.4	-38.2	-949.2	950.0	0.00	0.00	0.00
5,000.0	16.18	267.70	4,868.8	-38.7	-960.3	961.1	0.00	0.00	0.00
5,040.0	16.18	267.70	4,907.2	-39.1	-971.5	972.3	0.00	0.00	0.00
5,080.0	16.18	267.70	4,945.6	-39.5	-982.6	983.4	0.00	0.00	0.00
5,120.0	16.18	267.70	4,984.0	-40.0	-993.8	994.6	0.00	0.00	0.00
5,138.2	16.18	267.70	5,001.5	-40.2	-998.8	999.6	0.00	0.00	0.00
5,160.0	15.75	267.70	5,022.5	-40.4	-1,004.8	1,005.6	2.00	-2.00	0.00
5,200.0	14.95	267.70	5,061.0	-40.9	-1,015.4	1,016.2	2.00	-2.00	0.00
5,240.0	14.15	267.70	5,099.7	-41.3	-1,025.4	1,026.3	2.00	-2.00	0.00
5,280.0	13.35	267.70	5,138.6	-41.7	-1,034.9	1,035.8	2.00	-2.00	0.00
5,320.0	12.55	267.70	5,177.6	-42.0	-1,043.9	1,044.7	2.00	-2.00	0.00
5,360.0	11.75	267.70	5,216.7	-42.4	-1,052.3	1,053.1	2.00	-2.00	0.00
5,400.0	10.95	267.70	5,255.9	-42.7	-1,060.2	1,061.0	2.00	-2.00	0.00
5,440.0	10.15	267.70	5,295.2	-43.0	-1,067.5	1,068.3	2.00	-2.00	0.00
5,480.0	9.35	267.70	5,334.6	-43.2	-1,074.2	1,075.1	2.00	-2.00	0.00
5,520.0	8.55	267.70	5,374.2	-43.5	-1,080.5	1,081.3	2.00	-2.00	0.00
5,560.0	7.75	267.70	5,413.8	-43.7	-1,086.1	1,087.0	2.00	-2.00	0.00
5,600.0	6.95	267.70	5,453.4	-43.9	-1,091.2	1,092.1	2.00	-2.00	0.00
5,640.0	6.15	267.70	5,493.2	-44.1	-1,095.8	1,096.7	2.00	-2.00	0.00
5,680.0	5.35	267.70	5,533.0	-44.3	-1,099.8	1,100.7	2.00	-2.00	0.00
5,720.0	4.55	267.70	5,572.8	-44.4	-1,103.2	1,104.1	2.00	-2.00	0.00
5,760.0	3.75	267.70	5,612.7	-44.5	-1,106.1	1,107.0	2.00	-2.00	0.00
5,800.0	2.95	267.70	5,652.6	-44.6	-1,108.5	1,109.4	2.00	-2.00	0.00
5,840.0	2.15	267.70	5,692.6	-44.7	-1,110.3	1,111.2	2.00	-2.00	0.00
5,880.0	1.35	267.70	5,732.6	-44.7	-1,111.5	1,112.4	2.00	-2.00	0.00
5,920.0	0.55	267.70	5,772.6	-44.8	-1,112.1	1,113.0	2.00	-2.00	0.00
5,947.4	0.00	0.00	5,800.0	-44.8	-1,112.3	1,113.2	2.00	-2.00	0.00
TARGET BHL 1325'FNL & 2556'FEL									
5,960.0	0.00	0.00	5,812.6	-44.8	-1,112.3	1,113.2	0.00	0.00	0.00
6,000.0	0.00	0.00	5,852.6	-44.8	-1,112.3	1,113.2	0.00	0.00	0.00
6,040.0	0.00	0.00	5,892.6	-44.8	-1,112.3	1,113.2	0.00	0.00	0.00
6,080.0	0.00	0.00	5,932.6	-44.8	-1,112.3	1,113.2	0.00	0.00	0.00
6,120.0	0.00	0.00	5,972.6	-44.8	-1,112.3	1,113.2	0.00	0.00	0.00
6,160.0	0.00	0.00	6,012.6	-44.8	-1,112.3	1,113.2	0.00	0.00	0.00
6,200.0	0.00	0.00	6,052.6	-44.8	-1,112.3	1,113.2	0.00	0.00	0.00

<b>Database:</b>	Landmark	<b>Local Co-ordinate Reference:</b>	Well SRC Coyle 34ND
<b>Company:</b>	Synergy Resources	<b>TVD Reference:</b>	WELL @ 5123.0ft (Original Well Elev)
<b>Project:</b>	SEC.34-T4N-R68W	<b>MD Reference:</b>	WELL @ 5123.0ft (Original Well Elev)
<b>Site:</b>	SRC Coyle 31-34D Pad Sec.34-T4N-R68W	<b>North Reference:</b>	True
<b>Well:</b>	SRC Coyle 34ND	<b>Survey Calculation Method:</b>	Minimum Curvature
<b>Wellbore:</b>	Wellbore #1		
<b>Design:</b>	Plan #1 (8-23-11)		

Planned Survey									
Measured Depth (ft)	Inclination (°)	Azimuth (°)	Vertical Depth (ft)	+N/-S (ft)	+E/-W (ft)	Vertical Section (ft)	Dogleg Rate (°/100ft)	Build Rate (°/100ft)	Turn Rate (°/100ft)
6,240.0	0.00	0.00	6,092.6	-44.8	-1,112.3	1,113.2	0.00	0.00	0.00
6,280.0	0.00	0.00	6,132.6	-44.8	-1,112.3	1,113.2	0.00	0.00	0.00
6,320.0	0.00	0.00	6,172.6	-44.8	-1,112.3	1,113.2	0.00	0.00	0.00
6,360.0	0.00	0.00	6,212.6	-44.8	-1,112.3	1,113.2	0.00	0.00	0.00
6,400.0	0.00	0.00	6,252.6	-44.8	-1,112.3	1,113.2	0.00	0.00	0.00
6,440.0	0.00	0.00	6,292.6	-44.8	-1,112.3	1,113.2	0.00	0.00	0.00
6,480.0	0.00	0.00	6,332.6	-44.8	-1,112.3	1,113.2	0.00	0.00	0.00
6,520.0	0.00	0.00	6,372.6	-44.8	-1,112.3	1,113.2	0.00	0.00	0.00
6,560.0	0.00	0.00	6,412.6	-44.8	-1,112.3	1,113.2	0.00	0.00	0.00
6,600.0	0.00	0.00	6,452.6	-44.8	-1,112.3	1,113.2	0.00	0.00	0.00
6,640.0	0.00	0.00	6,492.6	-44.8	-1,112.3	1,113.2	0.00	0.00	0.00
6,680.0	0.00	0.00	6,532.6	-44.8	-1,112.3	1,113.2	0.00	0.00	0.00
6,720.0	0.00	0.00	6,572.6	-44.8	-1,112.3	1,113.2	0.00	0.00	0.00
6,760.0	0.00	0.00	6,612.6	-44.8	-1,112.3	1,113.2	0.00	0.00	0.00
6,800.0	0.00	0.00	6,652.6	-44.8	-1,112.3	1,113.2	0.00	0.00	0.00
6,840.0	0.00	0.00	6,692.6	-44.8	-1,112.3	1,113.2	0.00	0.00	0.00
6,880.0	0.00	0.00	6,732.6	-44.8	-1,112.3	1,113.2	0.00	0.00	0.00
6,920.0	0.00	0.00	6,772.6	-44.8	-1,112.3	1,113.2	0.00	0.00	0.00
6,960.0	0.00	0.00	6,812.6	-44.8	-1,112.3	1,113.2	0.00	0.00	0.00
7,000.0	0.00	0.00	6,852.6	-44.8	-1,112.3	1,113.2	0.00	0.00	0.00
7,040.0	0.00	0.00	6,892.6	-44.8	-1,112.3	1,113.2	0.00	0.00	0.00
7,080.0	0.00	0.00	6,932.6	-44.8	-1,112.3	1,113.2	0.00	0.00	0.00
7,120.0	0.00	0.00	6,972.6	-44.8	-1,112.3	1,113.2	0.00	0.00	0.00
7,160.0	0.00	0.00	7,012.6	-44.8	-1,112.3	1,113.2	0.00	0.00	0.00
7,200.0	0.00	0.00	7,052.6	-44.8	-1,112.3	1,113.2	0.00	0.00	0.00
7,240.0	0.00	0.00	7,092.6	-44.8	-1,112.3	1,113.2	0.00	0.00	0.00
7,280.0	0.00	0.00	7,132.6	-44.8	-1,112.3	1,113.2	0.00	0.00	0.00
7,320.0	0.00	0.00	7,172.6	-44.8	-1,112.3	1,113.2	0.00	0.00	0.00
7,360.0	0.00	0.00	7,212.6	-44.8	-1,112.3	1,113.2	0.00	0.00	0.00
7,400.0	0.00	0.00	7,252.6	-44.8	-1,112.3	1,113.2	0.00	0.00	0.00
7,440.0	0.00	0.00	7,292.6	-44.8	-1,112.3	1,113.2	0.00	0.00	0.00
7,480.0	0.00	0.00	7,332.6	-44.8	-1,112.3	1,113.2	0.00	0.00	0.00
7,520.0	0.00	0.00	7,372.6	-44.8	-1,112.3	1,113.2	0.00	0.00	0.00
7,560.0	0.00	0.00	7,412.6	-44.8	-1,112.3	1,113.2	0.00	0.00	0.00
7,600.0	0.00	0.00	7,452.6	-44.8	-1,112.3	1,113.2	0.00	0.00	0.00
7,640.0	0.00	0.00	7,492.6	-44.8	-1,112.3	1,113.2	0.00	0.00	0.00
7,680.0	0.00	0.00	7,532.6	-44.8	-1,112.3	1,113.2	0.00	0.00	0.00
7,720.0	0.00	0.00	7,572.6	-44.8	-1,112.3	1,113.2	0.00	0.00	0.00
7,760.0	0.00	0.00	7,612.6	-44.8	-1,112.3	1,113.2	0.00	0.00	0.00
7,800.0	0.00	0.00	7,652.6	-44.8	-1,112.3	1,113.2	0.00	0.00	0.00
7,840.0	0.00	0.00	7,692.6	-44.8	-1,112.3	1,113.2	0.00	0.00	0.00
7,880.0	0.00	0.00	7,732.6	-44.8	-1,112.3	1,113.2	0.00	0.00	0.00
7,920.0	0.00	0.00	7,772.6	-44.8	-1,112.3	1,113.2	0.00	0.00	0.00
7,960.0	0.00	0.00	7,812.6	-44.8	-1,112.3	1,113.2	0.00	0.00	0.00
7,967.4	0.00	0.00	7,820.0	-44.8	-1,112.3	1,113.2	0.00	0.00	0.00
J-SAND - HARDLINE 75'W OF BHL									

<b>Database:</b>	Landmark	<b>Local Co-ordinate Reference:</b>	Well SRC Coyle 34ND
<b>Company:</b>	Synergy Resources	<b>TVD Reference:</b>	WELL @ 5123.0ft (Original Well Elev)
<b>Project:</b>	SEC.34-T4N-R68W	<b>MD Reference:</b>	WELL @ 5123.0ft (Original Well Elev)
<b>Site:</b>	SRC Coyle 31-34D Pad Sec.34-T4N-R68W	<b>North Reference:</b>	True
<b>Well:</b>	SRC Coyle 34ND	<b>Survey Calculation Method:</b>	Minimum Curvature
<b>Wellbore:</b>	Wellbore #1		
<b>Design:</b>	Plan #1 (8-23-11)		

Targets									
Target Name									
- hit/miss target	Dip Angle (°)	Dip Dir. (°)	TVD (ft)	+N/-S (ft)	+E/-W (ft)	Northing (ft)	Easting (ft)	Latitude	Longitude
- Shape									
HARDLINE 75'W OF I	0.00	0.00	7,820.0	-144.8	-1,187.3	1,342,791.19	3,142,526.11	40.273234	-104.989208
- plan misses target center by 125.0ft at 7967.4ft MD (7820.0 TVD, -44.8 N, -1112.3 E)									
- Polygon									
Point 1			7,820.0	0.0	0.0	1,342,791.19	3,142,526.11		
Point 2			7,820.0	200.0	0.0	1,342,991.18	3,142,524.95		
Point 3			7,820.0	0.0	0.0	1,342,791.19	3,142,526.11		
TARGET BHL 1325'F	0.00	0.00	5,800.0	-44.8	-1,112.3	1,342,891.64	3,142,600.56	40.273509	-104.988939
- plan hits target center									
- Point									

Casing Points					
Measured Depth (ft)	Vertical Depth (ft)	Name	Casing Diameter (")	Hole Diameter (")	
640.0	640.0	8 5/8"	8-5/8	12-1/4	

Formations					
Measured Depth (ft)	Vertical Depth (ft)	Name	Lithology	Dip (°)	Dip Direction (°)
7,967.4	7,820.0	J-SAND		0.00	





# **Directional**

## **Synergy Resources**

**SEC.34-T4N-R68W**

**SRC Coyle 31-34D Pad Sec.34-T4N-R68W**

**SRC Coyle 34ND**

**Wellbore #1**

**Plan #1 (8-23-11)**

## **Anticollision Report**

**25 August, 2011**



SRC Coyle 31-34D Pad Sec.34-T4N-R68W - SRC Coyle 34OD - Wellbore #1 - Plan #1 (8-23-11)													Offset Site Error:	0.0 ft
Survey Program: 0-MWD													Offset Well Error:	0.0 ft
Reference		Offset		Semi Major Axis			Distance							
Measured Depth (ft)	Vertical Depth (ft)	Measured Depth (ft)	Vertical Depth (ft)	Reference (ft)	Offset (ft)	Highside Toolface (°)	Offset Wellbore Centre +N/-S (ft)	Offset Wellbore Centre +E/-W (ft)	Between Centres (ft)	Between Ellipses (ft)	Minimum Separation (ft)	Separation Factor	Warning	
1,959.2	1,948.5	1,889.7	1,828.1	4.7	8.9	-59.59	-320.9	-255.6	367.1	357.4	9.78	37.548		
2,000.0	1,987.7	1,929.2	1,865.2	4.9	9.2	-60.55	-331.1	-264.5	375.2	365.1	10.13	37.040		
2,100.0	2,083.7	2,026.0	1,956.2	5.4	9.9	-62.74	-355.9	-286.3	395.5	384.5	11.04	35.842		
2,200.0	2,179.7	2,122.9	2,047.2	5.9	10.6	-64.72	-380.7	-308.1	416.3	404.4	11.99	34.729		
2,300.0	2,275.8	2,219.7	2,138.2	6.4	11.2	-66.51	-405.6	-329.9	437.6	424.6	12.98	33.712		
2,400.0	2,371.8	2,316.5	2,229.2	6.9	11.9	-68.14	-430.4	-351.8	459.2	445.2	14.00	32.972		
2,500.0	2,467.8	2,413.3	2,320.2	7.5	12.6	-69.62	-455.3	-373.6	481.1	466.1	15.05	31.966		
2,600.0	2,563.9	2,510.2	2,411.2	8.0	13.3	-70.97	-480.1	-395.4	503.4	487.2	16.12	31.225		
2,700.0	2,659.9	2,607.0	2,502.2	8.6	14.0	-72.21	-504.9	-417.3	525.8	508.6	17.21	30.561		
2,800.0	2,756.0	2,703.8	2,593.2	9.1	14.6	-73.35	-529.8	-439.1	548.5	530.2	18.31	29.966		
2,900.0	2,852.0	2,800.7	2,684.2	9.7	15.3	-74.40	-554.6	-460.9	571.4	552.0	19.42	29.431		
3,000.0	2,948.0	2,897.5	2,775.3	10.3	16.0	-75.36	-579.5	-482.7	594.5	573.9	20.53	28.950		
3,100.0	3,044.1	2,994.3	2,866.3	10.9	16.7	-76.26	-604.3	-504.6	617.7	596.0	21.66	28.516		
3,200.0	3,140.1	3,091.1	2,957.3	11.4	17.4	-77.09	-629.1	-526.4	641.0	618.2	22.79	28.122		
3,300.0	3,236.1	3,188.0	3,048.3	12.0	18.1	-77.87	-654.0	-548.2	664.5	640.5	23.93	27.766		
3,400.0	3,332.2	3,284.8	3,139.3	12.6	18.7	-78.59	-678.8	-570.0	688.0	662.9	25.07	27.441		
3,500.0	3,428.2	3,381.6	3,230.3	13.2	19.4	-79.26	-703.7	-591.9	711.7	685.5	26.22	27.145		
3,600.0	3,524.3	3,478.5	3,321.3	13.8	20.1	-79.89	-728.5	-613.7	735.4	708.1	27.37	26.874		
3,700.0	3,620.3	3,575.3	3,412.3	14.3	20.8	-80.48	-753.3	-635.5	759.3	730.7	28.52	26.625		
3,800.0	3,716.3	3,672.1	3,503.3	14.9	21.5	-81.04	-778.2	-657.3	783.2	753.5	29.67	26.396		
3,900.0	3,812.4	3,768.9	3,594.3	15.5	22.2	-81.56	-803.0	-679.2	807.1	776.3	30.82	26.185		
4,000.0	3,908.4	3,865.8	3,685.3	16.1	22.8	-82.06	-827.9	-701.0	831.1	799.2	31.98	25.989		
4,100.0	4,004.4	3,962.6	3,776.3	16.7	23.5	-82.52	-852.7	-722.8	855.2	822.1	33.14	25.808		
4,200.0	4,100.5	4,059.4	3,867.3	17.3	24.2	-82.96	-877.5	-744.7	879.4	845.1	34.30	25.640		
4,300.0	4,196.5	4,156.3	3,958.4	17.9	24.9	-83.38	-902.4	-766.5	903.5	868.1	35.46	25.484		
4,400.0	4,292.5	4,253.1	4,049.4	18.5	25.6	-83.77	-927.2	-788.3	927.8	891.1	36.62	25.338		
4,500.0	4,388.6	4,349.9	4,140.4	19.1	26.3	-84.15	-952.1	-810.1	952.0	914.2	37.78	25.202		
4,600.0	4,484.6	4,446.8	4,231.4	19.7	26.9	-84.50	-976.9	-832.0	976.3	937.4	38.94	25.074		
4,700.0	4,580.7	4,543.6	4,322.4	20.2	27.6	-84.84	-1,001.7	-853.8	1,000.6	960.5	40.10	24.954		
4,800.0	4,676.7	4,640.4	4,413.4	20.8	28.3	-85.16	-1,026.6	-875.6	1,025.0	983.7	41.26	24.842		
4,900.0	4,772.7	4,737.2	4,504.4	21.4	29.0	-85.47	-1,051.4	-897.4	1,049.4	1,007.0	42.42	24.736		
5,000.0	4,868.8	4,834.1	4,595.4	22.0	29.7	-85.77	-1,076.3	-919.3	1,073.8	1,030.2	43.59	24.636		
5,100.0	4,964.8	4,930.9	4,686.4	22.6	30.4	-86.05	-1,101.1	-941.1	1,098.2	1,053.5	44.75	24.542		
5,138.2	5,001.5	4,967.9	4,721.2	22.8	30.6	-86.15	-1,110.6	-949.4	1,107.6	1,062.4	45.19	24.508		
5,200.0	5,061.0	5,027.7	4,777.4	23.2	31.0	-86.59	-1,125.9	-962.9	1,122.8	1,076.8	45.93	24.444		
5,300.0	5,158.1	5,124.6	4,868.5	23.6	31.7	-87.16	-1,150.8	-984.8	1,147.5	1,100.5	46.99	24.422		
5,400.0	5,255.9	5,238.9	4,976.1	23.9	32.4	-87.54	-1,179.7	-1,010.2	1,172.0	1,124.1	47.97	24.433		
5,500.0	5,354.4	5,379.5	5,110.3	24.2	33.1	-87.78	-1,211.3	-1,037.9	1,193.8	1,145.0	48.86	24.436		
5,600.0	5,453.4	5,522.3	5,248.4	24.5	33.6	-87.93	-1,238.3	-1,061.6	1,212.2	1,162.6	49.62	24.429		
5,700.0	5,552.9	5,667.0	5,390.1	24.7	34.1	-88.01	-1,260.3	-1,081.0	1,227.0	1,176.8	50.26	24.415		
5,800.0	5,652.6	5,813.3	5,534.7	24.9	34.5	-88.01	-1,277.1	-1,095.8	1,238.2	1,187.4	50.76	24.391		
5,900.0	5,752.6	5,960.8	5,681.4	25.0	34.8	-87.93	-1,288.4	-1,105.7	1,245.7	1,194.6	51.13	24.363		
5,947.4	5,800.0	6,031.1	5,751.5	25.1	34.9	179.83	-1,291.8	-1,108.7	1,248.0	1,196.7	51.26	24.346		
6,000.0	5,852.6	6,109.1	5,829.5	25.1	35.0	179.93	-1,294.0	-1,110.6	1,249.5	1,198.1	51.38	24.318		
6,100.0	5,952.6	6,232.2	5,952.6	25.2	35.1	179.95	-1,294.7	-1,111.2	1,249.9	1,198.3	51.61	24.221		
6,200.0	6,052.6	6,332.2	6,052.6	25.3	35.1	179.95	-1,294.7	-1,111.2	1,249.9	1,198.1	51.81	24.125		
6,300.0	6,152.6	6,432.2	6,152.6	25.5	35.2	179.95	-1,294.7	-1,111.2	1,249.9	1,197.9	52.02	24.029		
6,400.0	6,252.6	6,532.2	6,252.6	25.6	35.3	179.95	-1,294.7	-1,111.2	1,249.9	1,197.7	52.23	23.932		
6,500.0	6,352.6	6,632.2	6,352.6	25.7	35.4	179.95	-1,294.7	-1,111.2	1,249.9	1,197.5	52.44	23.835		
6,600.0	6,452.6	6,732.2	6,452.6	25.8	35.4	179.95	-1,294.7	-1,111.2	1,249.9	1,197.3	52.66	23.737		
6,700.0	6,552.6	6,832.2	6,552.6	25.9	35.5	179.95	-1,294.7	-1,111.2	1,249.9	1,197.0	52.88	23.638		
6,800.0	6,652.6	6,932.2	6,652.6	26.0	35.6	179.95	-1,294.7	-1,111.2	1,249.9	1,196.8	53.10	23.539		

<b>Company:</b>	Synergy Resources	<b>Local Co-ordinate Reference:</b>	Well SRC Coyle 34ND
<b>Project:</b>	SEC.34-T4N-R68W	<b>TVD Reference:</b>	WELL @ 5123.0ft (Original Well Elev)
<b>Reference Site:</b>	SRC Coyle 31-34D Pad Sec.34-T4N-R68W	<b>MD Reference:</b>	WELL @ 5123.0ft (Original Well Elev)
<b>Site Error:</b>	0.0ft	<b>North Reference:</b>	True
<b>Reference Well:</b>	SRC Coyle 34ND	<b>Survey Calculation Method:</b>	Minimum Curvature
<b>Well Error:</b>	0.0ft	<b>Output errors are at</b>	2.00 sigma
<b>Reference Wellbore</b>	Wellbore #1	<b>Database:</b>	Landmark
<b>Reference Design:</b>	Plan #1 (8-23-11)	<b>Offset TVD Reference:</b>	Offset Datum

<b>Offset Design</b>												<b>Offset Site Error:</b>	0.0 ft
SRC Coyle 31-34D Pad Sec.34-T4N-R68W - SRC Coyle 34OD - Wellbore #1 - Plan #1 (8-23-11)												<b>Offset Well Error:</b>	0.0 ft
Survey Program: 0-MWD													
Reference		Offset		Semi Major Axis			Distance						
Measured Depth (ft)	Vertical Depth (ft)	Measured Depth (ft)	Vertical Depth (ft)	Reference (ft)	Offset (ft)	Highside Toolface (°)	Offset Wellbore Centre +N/-S (ft)	+E/-W (ft)	Between Centres (ft)	Between Ellipses (ft)	Minimum Separation (ft)	Separation Factor	Warning
6,900.0	6,752.6	7,032.2	6,752.6	26.2	35.7	179.95	-1,294.7	-1,111.2	1,249.9	1,196.6	53.33	23.440	
7,000.0	6,852.6	7,132.2	6,852.6	26.3	35.7	179.95	-1,294.7	-1,111.2	1,249.9	1,196.4	53.55	23.340	
7,100.0	6,952.6	7,232.2	6,952.6	26.4	35.8	179.95	-1,294.7	-1,111.2	1,249.9	1,196.1	53.78	23.240	
7,200.0	7,052.6	7,332.2	7,052.6	26.5	35.9	179.95	-1,294.7	-1,111.2	1,249.9	1,195.9	54.02	23.139	
7,300.0	7,152.6	7,432.2	7,152.6	26.7	36.0	179.95	-1,294.7	-1,111.2	1,249.9	1,195.7	54.25	23.038	
7,400.0	7,252.6	7,532.2	7,252.6	26.8	36.1	179.95	-1,294.7	-1,111.2	1,249.9	1,195.4	54.49	22.937	
7,500.0	7,352.6	7,632.2	7,352.6	26.9	36.1	179.95	-1,294.7	-1,111.2	1,249.9	1,195.2	54.73	22.836	
7,600.0	7,452.6	7,732.2	7,452.6	27.0	36.2	179.95	-1,294.7	-1,111.2	1,249.9	1,194.9	54.98	22.735	
7,700.0	7,552.6	7,832.2	7,552.6	27.2	36.3	179.95	-1,294.7	-1,111.2	1,249.9	1,194.7	55.23	22.633	
7,800.0	7,652.6	7,932.2	7,652.6	27.3	36.4	179.95	-1,294.7	-1,111.2	1,249.9	1,194.5	55.47	22.531	
7,900.0	7,752.6	8,032.2	7,752.6	27.4	36.5	179.95	-1,294.7	-1,111.2	1,249.9	1,194.2	55.73	22.430	
7,967.4	7,820.0	8,099.6	7,820.0	27.5	36.5	179.95	-1,294.7	-1,111.2	1,249.9	1,194.0	55.90	22.361	

SRC Coyle 31-34D Pad Sec.34-T4N-R68W - SRC Coyle 41-34D - Wellbore #1 - Plan #1 (8-23-11)													Offset Site Error: 0.0 ft	
Survey Program: 0-MWD													Offset Well Error: 0.0 ft	
Reference		Offset		Semi Major Axis			Distance							
Measured Depth (ft)	Vertical Depth (ft)	Measured Depth (ft)	Vertical Depth (ft)	Reference (ft)	Offset (ft)	Highside Toolface (°)	Offset Wellbore Centre +N/-S (ft)	+E/-W (ft)	Between Centres (ft)	Between Ellipses (ft)	Minimum Separation (ft)	Separation Factor	Warning	
0.0	0.0	0.0	0.0	0.0	0.0	-44.50	14.2	-14.0	19.9	19.9	0.00	N/A		
100.0	100.0	100.0	100.0	0.1	0.1	-44.50	14.2	-14.0	19.9	19.7	0.22	88.568		
200.0	200.0	200.0	200.0	0.3	0.3	-44.50	14.2	-14.0	19.9	19.2	0.67	29.523		
300.0	300.0	300.0	300.0	0.6	0.6	-44.50	14.2	-14.0	19.9	18.8	1.12	17.714		
400.0	400.0	400.0	400.0	0.8	0.8	-44.50	14.2	-14.0	19.9	18.3	1.57	12.653		
500.0	500.0	500.0	500.0	1.0	1.0	-44.50	14.2	-14.0	19.9	17.9	2.02	9.841		
600.0	600.0	600.0	600.0	1.2	1.2	-44.50	14.2	-14.0	19.9	17.4	2.47	8.052		
700.0	700.0	700.0	700.0	1.5	1.5	-44.50	14.2	-14.0	19.9	17.0	2.92	6.813		
800.0	800.0	800.0	800.0	1.7	1.7	-44.50	14.2	-14.0	19.9	16.5	3.37	5.905		
900.0	900.0	900.0	900.0	1.9	1.9	-44.50	14.2	-14.0	19.9	16.1	3.82	5.210		
1,000.0	1,000.0	1,000.1	1,000.1	2.1	2.1	-43.25	14.4	-13.6	19.8	15.6	4.27	4.648		
1,091.6	1,091.6	1,091.7	1,091.6	2.3	2.3	-34.37	16.2	-11.1	19.6	14.9	4.67	4.195 CC		
1,100.0	1,100.0	1,100.0	1,100.0	2.4	2.3	-33.12	16.4	-10.7	19.6	14.9	4.71	4.164 ES		
1,150.0	1,150.0	1,149.9	1,149.8	2.5	2.5	-24.32	18.1	-8.2	19.9	15.0	4.93	4.038 SF		
1,200.0	1,200.0	1,199.6	1,199.3	2.6	2.6	79.69	20.3	-5.0	20.9	15.7	5.15	4.053		
1,300.0	1,299.9	1,298.2	1,297.4	2.8	2.8	107.77	26.1	3.5	27.4	21.9	5.58	4.917		
1,400.0	1,399.7	1,395.2	1,393.4	3.0	3.1	128.32	33.7	14.5	43.0	37.0	6.01	7.159		
1,500.0	1,499.1	1,489.9	1,486.7	3.2	3.3	139.66	42.8	27.9	67.0	60.6	6.43	10.416		
1,600.0	1,598.2	1,581.8	1,576.7	3.5	3.6	145.96	53.4	43.3	98.2	91.3	6.85	14.325		
1,700.0	1,696.6	1,670.5	1,662.9	3.8	4.0	149.69	65.1	60.4	135.7	128.5	7.27	18.677		
1,800.0	1,794.4	1,755.6	1,745.0	4.1	4.3	152.04	77.7	78.9	179.3	171.6	7.68	23.341		
1,900.0	1,891.5	1,839.9	1,825.8	4.5	4.7	153.65	91.4	99.0	228.1	220.0	8.10	28.164		
1,959.2	1,948.5	1,890.6	1,874.3	4.7	5.0	154.42	99.7	111.1	258.5	250.2	8.34	30.993		
2,000.0	1,987.7	1,925.3	1,907.4	4.9	5.1	155.07	105.4	119.4	279.8	271.3	8.53	32.800		
2,100.0	2,083.7	2,010.3	1,988.8	5.4	5.6	156.31	119.4	139.9	332.2	323.2	8.99	36.944		
2,200.0	2,179.7	2,095.3	2,070.1	5.9	6.0	157.22	133.3	160.3	384.6	375.1	9.47	40.620		
2,300.0	2,275.8	2,180.3	2,151.4	6.4	6.5	157.91	147.3	180.7	437.1	427.1	9.96	43.897		
2,400.0	2,371.8	2,265.3	2,232.8	6.9	7.0	158.45	161.3	201.1	489.6	479.2	10.45	46.830		
2,500.0	2,467.8	2,350.3	2,314.1	7.5	7.4	158.88	175.2	221.5	542.2	531.2	10.96	49.465		
2,600.0	2,563.9	2,435.3	2,395.4	8.0	7.9	159.24	189.2	241.9	594.7	583.3	11.47	51.838		
2,700.0	2,659.9	2,520.3	2,476.8	8.6	8.4	159.54	203.1	262.3	647.3	635.3	11.99	53.984		
2,800.0	2,756.0	2,605.4	2,558.1	9.1	8.9	159.80	217.1	282.7	699.9	687.4	12.51	55.929		
2,900.0	2,852.0	2,690.4	2,639.5	9.7	9.4	160.02	231.0	303.1	752.5	739.5	13.04	57.697		
3,000.0	2,948.0	2,775.4	2,720.8	10.3	9.9	160.21	245.0	323.6	805.1	791.5	13.57	59.309		
3,100.0	3,044.1	2,860.4	2,802.1	10.9	10.4	160.38	259.0	344.0	857.7	843.6	14.11	60.785		
3,200.0	3,140.1	2,945.4	2,883.5	11.4	10.8	160.53	272.9	364.4	910.4	895.7	14.65	62.141		
3,300.0	3,236.1	3,030.4	2,964.8	12.0	11.3	160.66	286.9	384.8	963.0	947.8	15.19	63.388		
3,400.0	3,332.2	3,115.4	3,046.2	12.6	11.8	160.78	300.8	405.2	1,015.6	999.9	15.74	64.539		
3,500.0	3,428.2	3,200.5	3,127.5	13.2	12.3	160.89	314.8	425.6	1,068.2	1,052.0	16.28	65.604		
3,600.0	3,524.3	3,285.5	3,208.8	13.8	12.8	160.98	328.8	446.0	1,120.9	1,104.0	16.83	66.590		
3,700.0	3,620.3	3,370.5	3,290.2	14.3	13.3	161.07	342.7	466.4	1,173.5	1,156.1	17.38	67.507		
3,800.0	3,716.3	3,455.5	3,371.5	14.9	13.8	161.15	356.7	486.8	1,226.1	1,208.2	17.94	68.360		
3,900.0	3,812.4	3,540.5	3,452.8	15.5	14.3	161.23	370.6	507.3	1,278.8	1,260.3	18.49	69.157		
4,000.0	3,908.4	3,625.5	3,534.2	16.1	14.9	161.29	384.6	527.7	1,331.4	1,312.4	19.05	69.902		
4,100.0	4,004.4	3,710.5	3,615.5	16.7	15.4	161.36	398.5	548.1	1,384.1	1,364.5	19.60	70.600		
4,200.0	4,100.5	3,795.6	3,696.9	17.3	15.9	161.42	412.5	568.5	1,436.7	1,416.5	20.16	71.254		
4,300.0	4,196.5	3,880.6	3,778.2	17.9	16.4	161.47	426.5	588.9	1,489.3	1,468.6	20.72	71.869		
4,400.0	4,292.5	3,965.6	3,859.5	18.5	16.9	161.52	440.4	609.3	1,542.0	1,520.7	21.28	72.448		
4,500.0	4,388.6	4,050.6	3,940.9	19.1	17.4	161.57	454.4	629.7	1,594.6	1,572.8	21.85	72.993		
4,600.0	4,484.6	4,135.6	4,022.2	19.7	17.9	161.61	468.3	650.1	1,647.3	1,624.9	22.41	73.508		
4,700.0	4,580.7	4,220.6	4,103.5	20.2	18.4	161.65	482.3	670.5	1,699.9	1,677.0	22.97	73.995		
4,800.0	4,676.7	4,305.6	4,184.9	20.8	18.9	161.69	496.2	691.0	1,752.6	1,729.0	23.54	74.456		

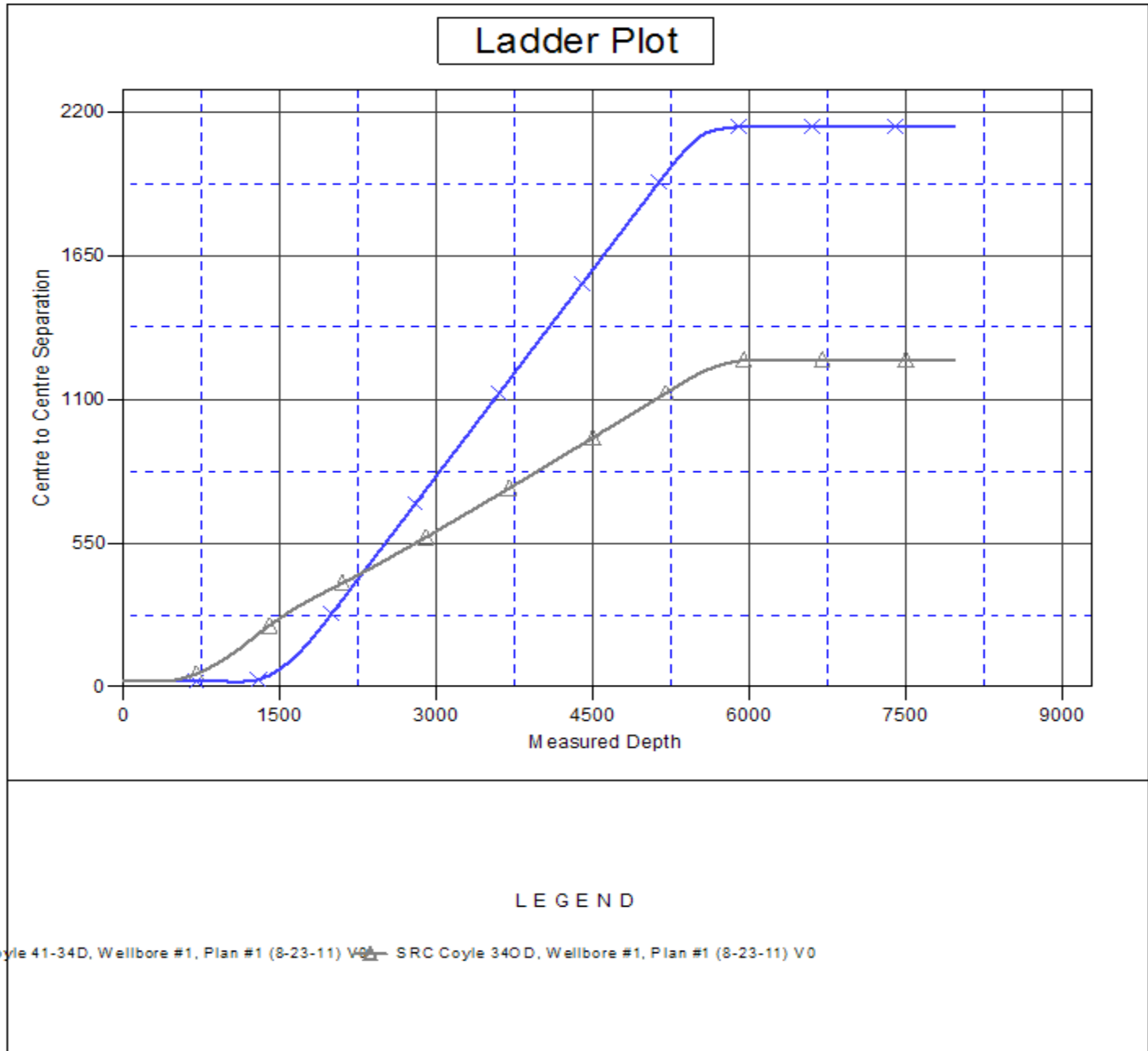
COMPASS 2003.21 Build 46

<b>Company:</b>	Synergy Resources	<b>Local Co-ordinate Reference:</b>	Well SRC Coyle 34ND
<b>Project:</b>	SEC.34-T4N-R68W	<b>TVD Reference:</b>	WELL @ 5123.0ft (Original Well Elev)
<b>Reference Site:</b>	SRC Coyle 31-34D Pad Sec.34-T4N-R68W	<b>MD Reference:</b>	WELL @ 5123.0ft (Original Well Elev)
<b>Site Error:</b>	0.0ft	<b>North Reference:</b>	True
<b>Reference Well:</b>	SRC Coyle 34ND	<b>Survey Calculation Method:</b>	Minimum Curvature
<b>Well Error:</b>	0.0ft	<b>Output errors are at</b>	2.00 sigma
<b>Reference Wellbore</b>	Wellbore #1	<b>Database:</b>	Landmark
<b>Reference Design:</b>	Plan #1 (8-23-11)	<b>Offset TVD Reference:</b>	Offset Datum

Offset Design SRC Coyle 31-34D Pad Sec.34-T4N-R68W - SRC Coyle 41-34D - Wellbore #1 - Plan #1 (8-23-11)													Offset Site Error: 0.0 ft	
Survey Program: 0-MWD													Offset Well Error: 0.0 ft	
Reference		Offset		Semi Major Axis			Distance						Warning	
Measured Depth (ft)	Vertical Depth (ft)	Measured Depth (ft)	Vertical Depth (ft)	Reference (ft)	Offset (ft)	Highside Toolface (°)	Offset Wellbore Centre		Between Centres (ft)	Between Ellipses (ft)	Minimum Separation (ft)	Separation Factor		
							+N/-S (ft)	+E/-W (ft)						
4,900.0	4,772.7	4,390.6	4,266.2	21.4	19.4	161.73	510.2	711.4	1,805.2	1,781.1	24.10	74.892		
5,000.0	4,868.8	4,475.7	4,347.6	22.0	19.9	161.76	524.2	731.8	1,857.9	1,833.2	24.67	75.306		
5,100.0	4,964.8	4,560.7	4,428.9	22.6	20.4	161.80	538.1	752.2	1,910.5	1,885.3	25.24	75.699		
5,138.2	5,001.5	4,593.1	4,460.0	22.8	20.6	161.81	543.5	760.0	1,930.6	1,905.2	25.46	75.844		
5,200.0	5,061.0	4,646.0	4,510.6	23.2	20.9	162.05	552.1	772.7	1,962.6	1,936.7	25.90	75.769		
5,300.0	5,158.1	4,732.9	4,593.7	23.6	21.5	162.39	566.4	793.6	2,012.1	1,985.5	26.59	75.675		
5,400.0	5,255.9	4,848.9	4,704.7	23.9	22.1	162.65	585.3	821.2	2,058.5	2,031.2	27.32	75.348		
5,500.0	5,354.4	5,157.3	5,005.1	24.2	23.3	162.81	624.5	878.6	2,096.2	2,067.8	28.42	73.757		
5,600.0	5,453.4	5,491.9	5,337.2	24.5	24.1	163.05	646.2	910.3	2,120.4	2,091.0	29.40	72.130		
5,700.0	5,552.9	5,707.6	5,552.9	24.7	24.4	163.27	648.9	914.1	2,131.6	2,101.6	30.02	70.999		
5,800.0	5,652.6	5,807.4	5,652.6	24.9	24.5	163.36	648.9	914.1	2,138.2	2,107.7	30.43	70.260		
5,900.0	5,752.6	5,907.3	5,752.6	25.0	24.6	163.40	648.9	914.1	2,141.4	2,110.6	30.80	69.531		
5,947.4	5,800.0	5,954.7	5,800.0	25.1	24.7	71.10	648.9	914.1	2,141.8	2,110.8	30.96	69.185		
6,000.0	5,852.6	6,007.3	5,852.6	25.1	24.7	71.10	648.9	914.1	2,141.8	2,110.7	31.13	68.801		
6,100.0	5,952.6	6,107.3	5,952.6	25.2	24.8	71.10	648.9	914.1	2,141.8	2,110.3	31.47	68.066		
6,200.0	6,052.6	6,207.3	6,052.6	25.3	25.0	71.10	648.9	914.1	2,141.8	2,110.0	31.81	67.339		
6,300.0	6,152.6	6,307.3	6,152.6	25.5	25.1	71.10	648.9	914.1	2,141.8	2,109.7	32.15	66.623		
6,400.0	6,252.6	6,407.3	6,252.6	25.6	25.2	71.10	648.9	914.1	2,141.8	2,109.3	32.49	65.916		
6,500.0	6,352.6	6,507.3	6,352.6	25.7	25.3	71.10	648.9	914.1	2,141.8	2,109.0	32.84	65.219		
6,600.0	6,452.6	6,607.3	6,452.6	25.8	25.4	71.10	648.9	914.1	2,141.8	2,108.6	33.19	64.532		
6,700.0	6,552.6	6,707.3	6,552.6	25.9	25.5	71.10	648.9	914.1	2,141.8	2,108.3	33.54	63.855		
6,800.0	6,652.6	6,807.3	6,652.6	26.0	25.7	71.10	648.9	914.1	2,141.8	2,107.9	33.90	63.187		
6,900.0	6,752.6	6,907.3	6,752.6	26.2	25.8	71.10	648.9	914.1	2,141.8	2,107.6	34.25	62.529		
7,000.0	6,852.6	7,007.3	6,852.6	26.3	25.9	71.10	648.9	914.1	2,141.8	2,107.2	34.61	61.881		
7,100.0	6,952.6	7,107.3	6,952.6	26.4	26.0	71.10	648.9	914.1	2,141.8	2,106.8	34.97	61.243		
7,200.0	7,052.6	7,207.3	7,052.6	26.5	26.2	71.10	648.9	914.1	2,141.8	2,106.5	35.34	60.614		
7,300.0	7,152.6	7,307.3	7,152.6	26.7	26.3	71.10	648.9	914.1	2,141.8	2,106.1	35.70	59.994		
7,400.0	7,252.6	7,407.3	7,252.6	26.8	26.4	71.10	648.9	914.1	2,141.8	2,105.7	36.07	59.384		
7,500.0	7,352.6	7,507.3	7,352.6	26.9	26.6	71.10	648.9	914.1	2,141.8	2,105.4	36.44	58.784		
7,600.0	7,452.6	7,607.3	7,452.6	27.0	26.7	71.10	648.9	914.1	2,141.8	2,105.0	36.81	58.192		
7,700.0	7,552.6	7,707.3	7,552.6	27.2	26.8	71.10	648.9	914.1	2,141.8	2,104.6	37.18	57.610		
7,800.0	7,652.6	7,807.3	7,652.6	27.3	27.0	71.10	648.9	914.1	2,141.8	2,104.3	37.55	57.036		
7,900.0	7,752.6	7,907.3	7,752.6	27.4	27.1	71.10	648.9	914.1	2,141.8	2,103.9	37.93	56.471		
7,967.4	7,820.0	7,974.7	7,820.0	27.5	27.2	71.10	648.9	914.1	2,141.8	2,103.6	38.18	56.096		

<b>Company:</b>	Synergy Resources	<b>Local Co-ordinate Reference:</b>	Well SRC Coyle 34ND
<b>Project:</b>	SEC.34-T4N-R68W	<b>TVD Reference:</b>	WELL @ 5123.0ft (Original Well Elev)
<b>Reference Site:</b>	SRC Coyle 31-34D Pad Sec.34-T4N-R68W	<b>MD Reference:</b>	WELL @ 5123.0ft (Original Well Elev)
<b>Site Error:</b>	0.0ft	<b>North Reference:</b>	True
<b>Reference Well:</b>	SRC Coyle 34ND	<b>Survey Calculation Method:</b>	Minimum Curvature
<b>Well Error:</b>	0.0ft	<b>Output errors are at</b>	2.00 sigma
<b>Reference Wellbore</b>	Wellbore #1	<b>Database:</b>	Landmark
<b>Reference Design:</b>	Plan #1 (8-23-11)	<b>Offset TVD Reference:</b>	Offset Datum

Reference Depths are relative to WELL @ 5123.0ft (Original Well Elev) Coordinates are relative to: SRC Coyle 34ND  
 Offset Depths are relative to Offset Datum Coordinate System is US State Plane 1983, Colorado Northern Zone  
 Central Meridian is -105.500000 ° Grid Convergence at Surface is: 0.33°



<b>Company:</b>	Synergy Resources	<b>Local Co-ordinate Reference:</b>	Well SRC Coyle 34ND
<b>Project:</b>	SEC.34-T4N-R68W	<b>TVD Reference:</b>	WELL @ 5123.0ft (Original Well Elev)
<b>Reference Site:</b>	SRC Coyle 31-34D Pad Sec.34-T4N-R68W	<b>MD Reference:</b>	WELL @ 5123.0ft (Original Well Elev)
<b>Site Error:</b>	0.0ft	<b>North Reference:</b>	True
<b>Reference Well:</b>	SRC Coyle 34ND	<b>Survey Calculation Method:</b>	Minimum Curvature
<b>Well Error:</b>	0.0ft	<b>Output errors are at</b>	2.00 sigma
<b>Reference Wellbore</b>	Wellbore #1	<b>Database:</b>	Landmark
<b>Reference Design:</b>	Plan #1 (8-23-11)	<b>Offset TVD Reference:</b>	Offset Datum

Reference Depths are relative to WELL @ 5123.0ft (Original Well Elev) Coordinates are relative to: SRC Coyle 34ND  
Offset Depths are relative to Offset Datum Coordinate System is US State Plane 1983, Colorado Northern Zone  
Central Meridian is -105.500000 ° Grid Convergence at Surface is: 0.33°

