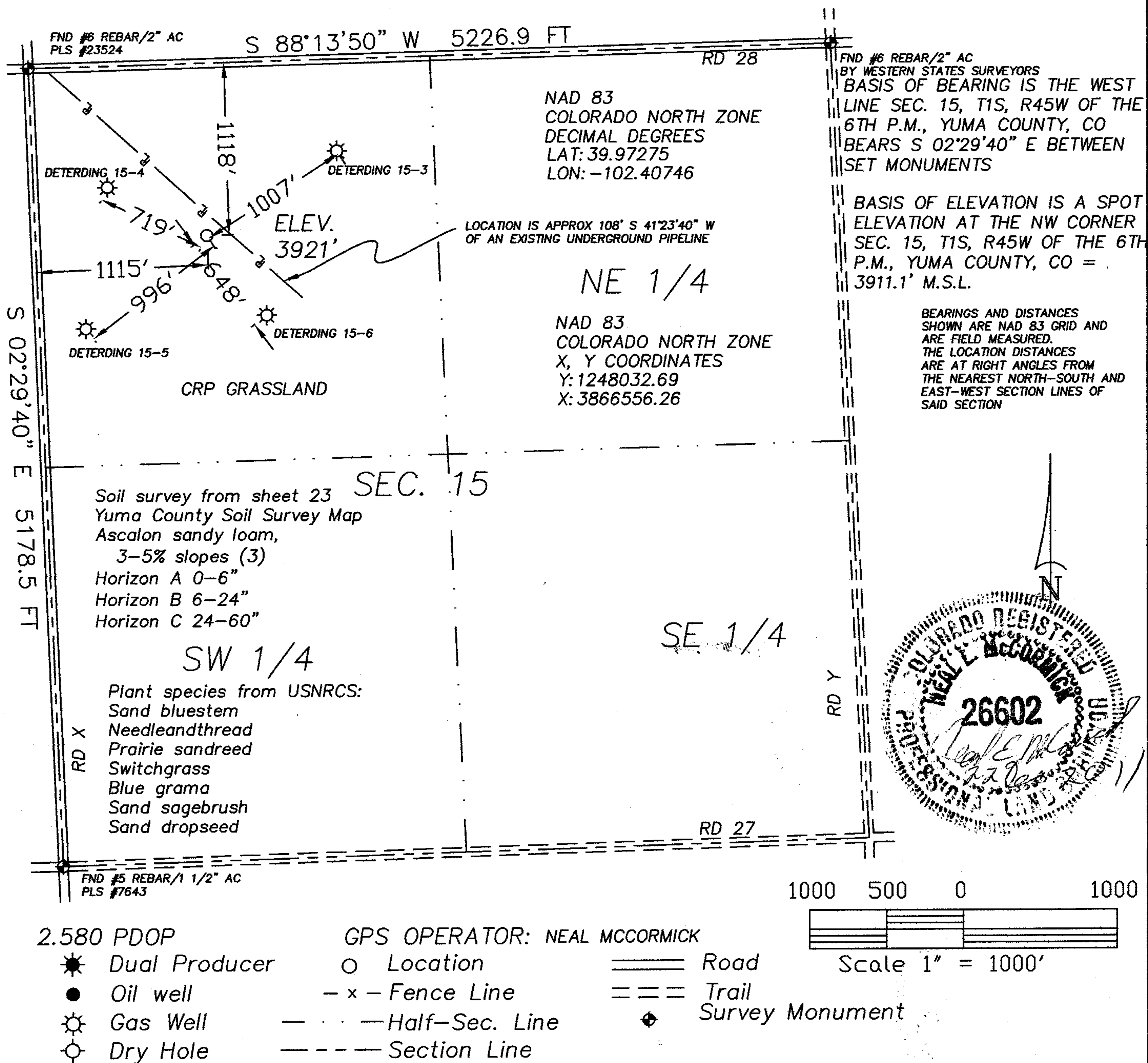


The accompanying plat is an accurate representation showing the location of a proposed well. This location may be described as a point 1118 feet South of the North line, and 1115 feet East of the West line of Section 15, Township 1 South, Range 45 West of the 6th P.M., Yuma County, Colorado.

The surface elevation at this point is 3921 feet m.s.l.

Note: This is not a land survey plat.

There are no visible improvements within 400 feet of the location, except an existing underground pipeline.



20575 C.R. 21
Haxtun, CO 80731

Phone 970-774-3602
Email gps@pctelcom.coop

DATE OF FIELD WORK:

20 DECEMBER 2011

DATE OF DRAWING:

22 DECEMBER 2011

DETERDING BB-15 1S45W

NW 1/4 NW 1/4 SEC. 15, T1S, R45W

AUGUSTUS ENERGY PARTNERS, LLC.

YUMA COUNTY, COLORADO