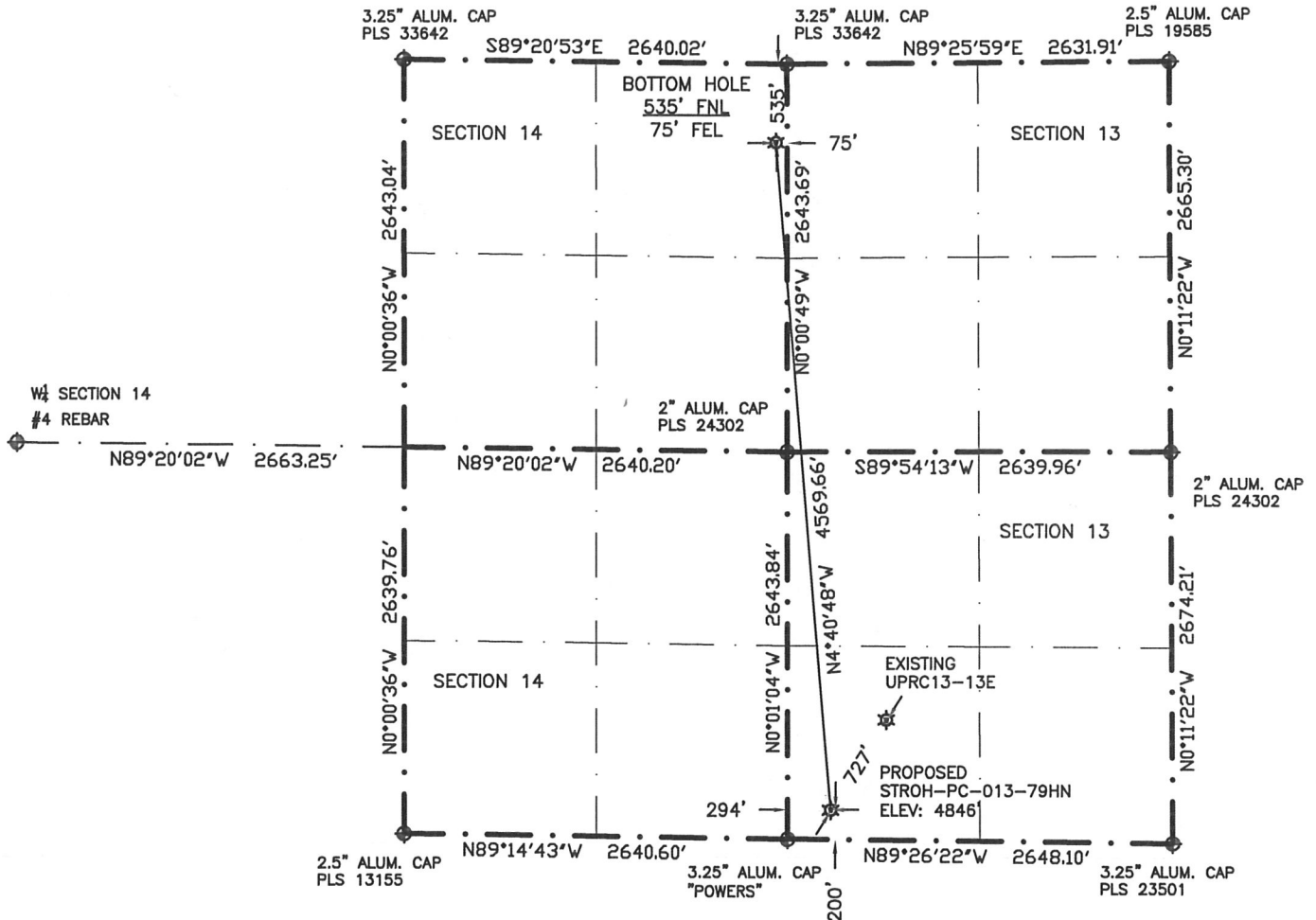


# WELL LOCATION CERTIFICATE

THIS MAP DOES NOT REPRESENT A BOUNDARY SURVEY

SECTIONS 13&14  
TOWNSHIP 4N  
RANGE 67W



LATITUDE & LONGITUDE (NAD83 SURFACE HOLE)

LATITUDE: N 40.30519

LONGITUDE: W 104.84765

PDOP: 1.2

QUARTER-QUARTER: SW $\frac{1}{4}$ SW $\frac{1}{4}$ , SECTION 13

NEAREST PROPERTY LINE: 200' SOUTH

IN ACCORDANCE WITH A REQUEST BY ERIK VAN DECAR-NOBLE ENERGY INC., BOUNDARY BOYS, LLC... HAS DETERMINED THE LOCATION OF THE STROH-PC-013-79HN WELL TO BE 200' FSL, 294' FWL, AS MEASURED AT NINETY (90) DEGREES FROM THE SECTION LINES, AND THE BOTTOM HOLE TO BE 535' FNL, 75' FEL, SECTIONS 13 AND 14, TOWNSHIP 4 NORTH, RANGE 67 WEST, 6TH PRINCIPLE MERIDIAN, WELD COUNTY, COLORADO

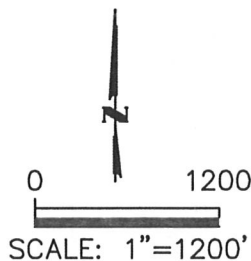
I HEREBY CERTIFY THAT THIS WELL LOCATION CERTIFICATE WAS PREPARED BY ME, OR UNDER MY DIRECT SUPERVISION, THAT THE FIELD WORK WAS COMPLETED ON MAY 10, 2011 FOR AND ON BEHALF OF NOBLE ENERGY INC., THAT IT IS NOT A LAND SURVEY PLAT OR AN IMPROVEMENT SURVEY PLAT, AND THAT IT IS NOT TO BE RELIED UPON FOR ESTABLISHMENT OF FENCE, BUILDING, OR OTHER FUTURE IMPROVEMENT LINES.

LATITUDE & LONGITUDE (NAD83 BOTTOM HOLE)

LATITUDE: N 40.31770

LONGITUDE: W 104.84887

QUARTER-QUARTER: NE $\frac{1}{4}$ NE $\frac{1}{4}$ , SECTION 14



- 1) BASIS OF BEARINGS FOR THIS MAP ARE BASED UPON GPS OBSERVATIONS MADE ON MAY 10, 2011 BETWEEN MONUMENTS LOCATED AT THE NORTHWEST CORNER AND THE NE $\frac{1}{4}$  CORNER OF SAID SECTION 13 AND WITH ALL OTHER BEARINGS SHOWN HEREON RELATIVE THERETO.
- 2) ELEVATIONS ARE BASED UPON NGS OPUS SOLUTION, NAVD 88 DATUM
- 3) THE NEAREST EXISTING WELL IS UPRC13-13E, 727' NORTHEAST
- 4) SEE VISIBLE IMPROVEMENTS EXHIBIT FOR ALL IMPROVEMENTS WITH 400' IMPROVEMENT BUFFER
- 5) THE LOCATION FALLS IN PASTURE LAND

NOTICE: According to Colorado law you MUST commence any legal action based upon any defect in this W.L.C. within three years after you first discover such defect. In no event may any action based upon any defect in this W.L.C. be commenced more than ten years from this said date of the certification shown hereon.

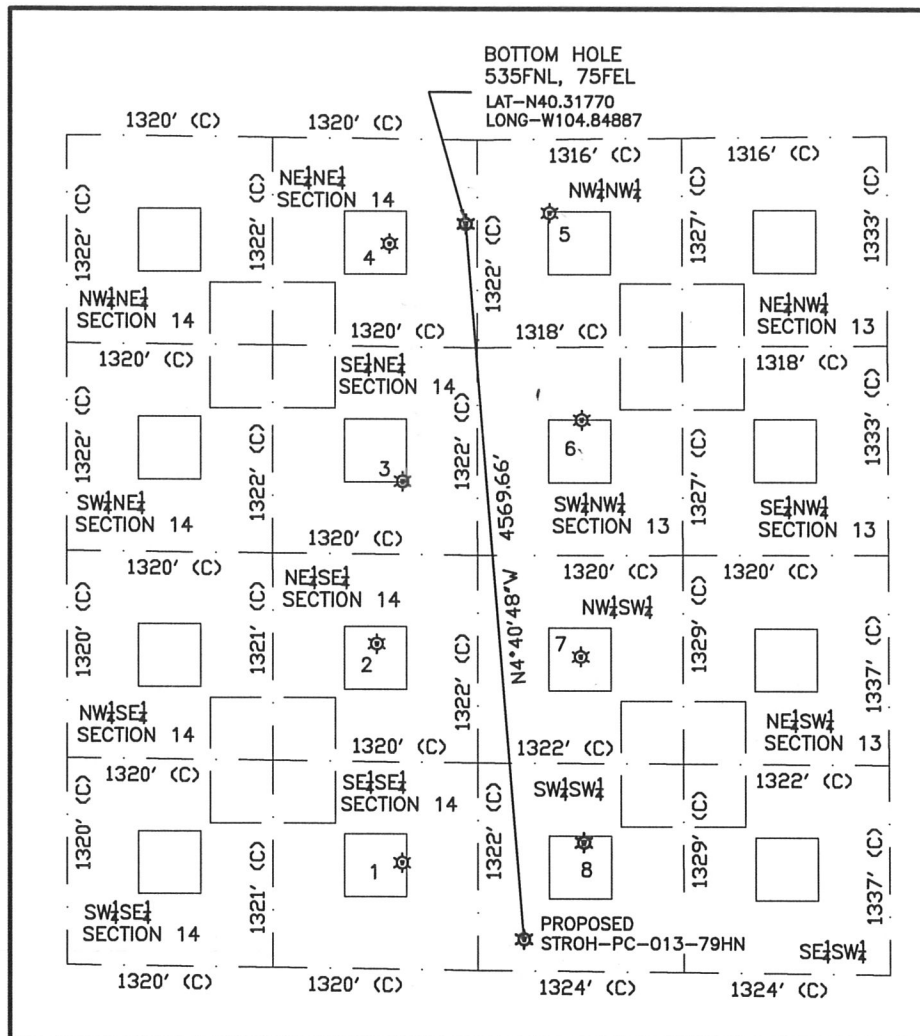
## LEGEND

- FOUND SURVEY MONUMENT PER MONUMENT RECORD-EXCEPTIONS NOTED
- (C) CALCULATED
- EXISTING WELL HEAD (UNLESS OTHERWISE NOTED)



Gregory A. Clark  
Professional Land Surveyor Registration No. 32430  
State of Colorado

Job No. 1N0B0106



①

LHI 14-44  
SE $\frac{1}{4}$ SE $\frac{1}{4}$  (SECTION 14)  
679' FSL  
489' FEL  
LAT- 40.30654N  
LONG- 104.85046W  
PDOP 2.1  
ELEV. 4839'

②

LHI 14-41  
NE $\frac{1}{4}$ SE $\frac{1}{4}$  (SECTION 14)  
2073' FSL  
651' FEL  
LAT- 40.31038N  
LONG- 104.85101W  
PDOP 1.9  
ELEV. 4814'

③

LHI 14-14  
SE $\frac{1}{4}$ NE $\frac{1}{4}$  (SECTION 14)  
2178' FNL  
485' FEL  
LAT- 40.31321N  
LONG- 104.85038W  
PDOP 3.4  
ELEV. 4792'

④

LHI 14-11  
NE $\frac{1}{4}$ NE $\frac{1}{4}$  (SECTION 14)  
667' FNL  
569' FEL  
LAT- 40.31736N  
LONG- 104.85065W  
PDOP 3.2  
ELEV. 4772'

⑤

EHRlich 13-22  
NW $\frac{1}{4}$ NW $\frac{1}{4}$  (SECTION 13)  
469' FNL  
464' FWL  
LAT- 40.31788N  
LONG- 104.84694W  
PDOP 2.6  
ELEV. 4764'

⑥

EHRlich 13-23  
SW $\frac{1}{4}$ NW $\frac{1}{4}$  (SECTION 13)  
1788' FNL  
642' FWL  
LAT- 40.31426N  
LONG- 104.84623W  
PDOP 2.1  
ELEV. 4795'

⑦

UPRC 13-12E  
NW $\frac{1}{4}$ SW $\frac{1}{4}$  (SECTION 13)  
2006' FSL  
663' FWL  
LAT- 40.31013N  
LONG- 104.84630W  
PDOP 1.8  
ELEV. 4816'

⑧

UPRC 13-13E  
SW $\frac{1}{4}$ SW $\frac{1}{4}$  (SECTION 13)  
822' FSL  
682' FWL  
LAT- 40.30688N  
LONG- 104.84626W  
PDOP 1.8  
ELEV. 4836'



SCALE: 1"=1200'

- 1) THIS SKETCH DOES NOT REPRESENT A BOUNDARY SURVEY  
2) THE DATUM FOR THE LATITUDES AND LONGITUDES ON THIS SKETCH IS NAD83