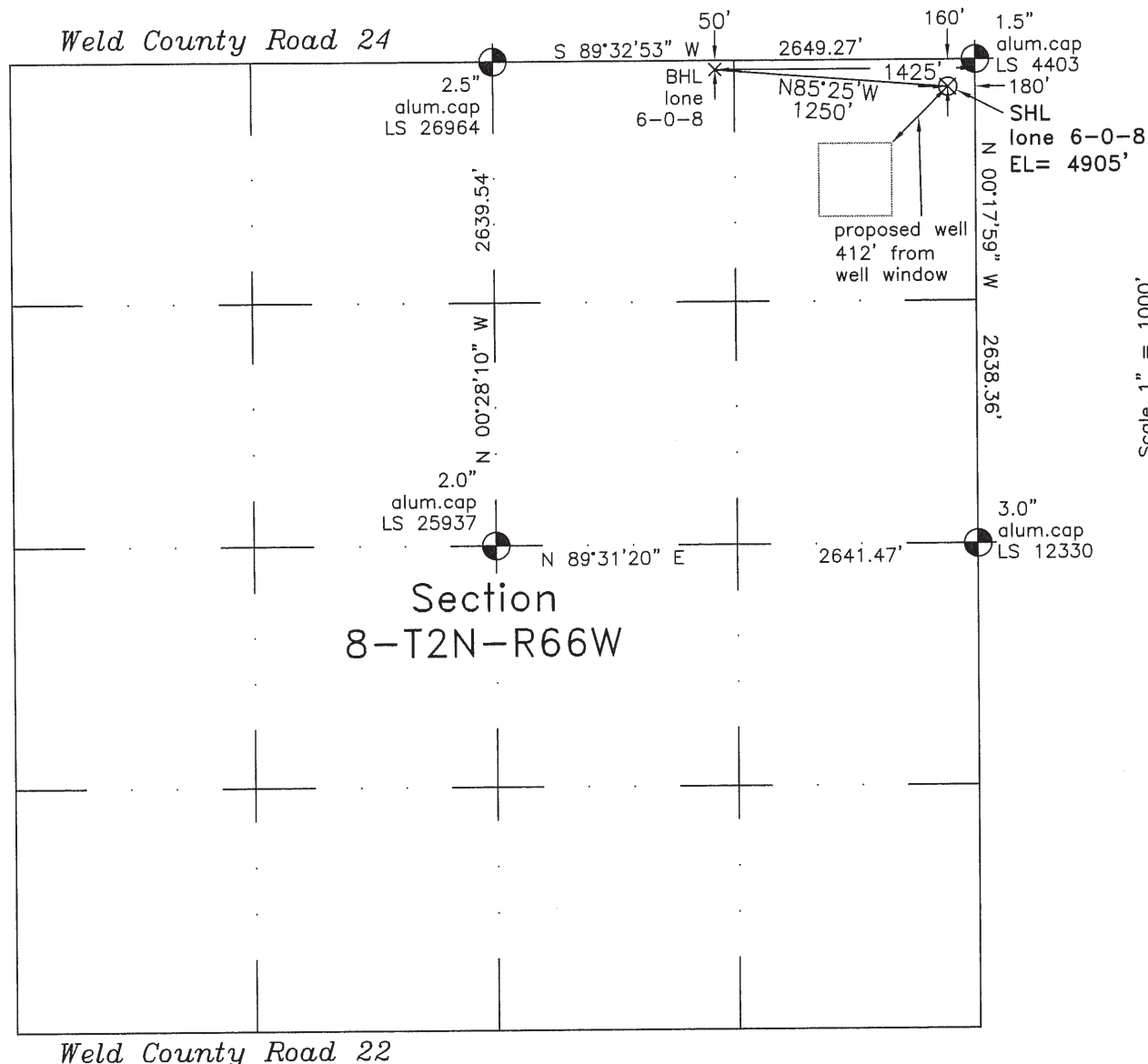


WELL LOCATION CERTIFICATE

THIS MAP DOES NOT REPRESENT A BOUNDARY SURVEY



Scale 1" = 1000'
1000'
approximate scale

LEGEND
— found survey monument
— calculated dimension
(c)

In accordance with a request from Dave Bale of EnCana Oil & Gas (USA) Inc., Frederick Land Surveying, Inc. has determined the location of the **lone 6-0-8** well site to be SHL 160' FNL and 180' FEL, BHL(50' FNL and 1425' FEL), as measured at ninety (90) degrees from the section lines of Section 8, Township 2 North, Range 66 West of the 6th Principal Meridian, Weld County, Colorado.

Proposed Surface Hole Data:

Latitude: N 40.15941° (BHL 40.15971°)

Longitude: W 104.79231° (BHL 104.79676°)

Nearest: Building 2915' northeast Above Ground Utility 277' northeast
Public Road 3079' northwest Railroad 5800' west
Property Line 160' north

PDOP: 1.1

Notes:

- 1) Bearings and distances based on NAD 83 Colorado North State Plane Coordinates using RTK GPS observations taken 2/4/10 by operator Craig Burke.
- 2) Conversion factor to ground (1.000275398).
- 3) Elevations based on NAVD 88 GPS heights and Geoid 2003 corrections.
- 4) See improvement map for visible improvements within 400 feet.
- 5) The location falls on agricultural land.

NOTICE: According to Colorado law you must commence any legal action based upon any defect in this W.L.C. within three years after you first discover such defect. In no event may any action based upon any defect in this W.L.C. be commenced more than ten years from this said date of the certification shown hereon.

I hereby certify that this Well Location Certificate was prepared by me or under my direct supervision on 2/12/10 for and on behalf of EnCana Oil & Gas (USA) Inc. and that it is a true and correct copy of the original Survey plat and that it is not to be relied upon for establishment of angles, bearings, or other future improvement lines.

Alex Rondal
ALEX RONDAL
REGISTERED LAND SURVEYOR
NO. 34176
STATE OF COLORADO

Alex Rondal Perkins #34176

Job #: 09034.066 2-22-2010