

DJ/Paradox/WTX

**Wattenberg
New Drills
Ione 6-0-8**

Wellbore #1

Plan: Design #1

Standard Planning Report

22 March, 2010

EnCana Corporation

Planning Report

Database:	EDM	Local Co-ordinate Reference:	Well lone 6-0-8
Company:	DJ/Paradox/WTX	TVD Reference:	RKB @ 4918.0ft (TBD)
Project:	Wattenberg	MD Reference:	RKB @ 4918.0ft (TBD)
Site:	New Drills	North Reference:	True
Well:	lone 6-0-8	Survey Calculation Method:	Minimum Curvature
Wellbore:	Wellbore #1		
Design:	Design #1		

Project	Wattenberg,		
Map System:	US State Plane 1983	System Datum:	Mean Sea Level
Geo Datum:	North American Datum 1983		
Map Zone:	Colorado Northern Zone		

Site		New Drills				
Site Position:		Northing:	1,252,450.66ft	Latitude:	40° 1' 32.016 N	
From:	Lat/Long	Easting:	3,120,627.66ft	Longitude:	105° 4' 9.336 W	
Position Uncertainty:		ft	Slot Radius:	in	Grid Convergence:	0.28 °

Well	lone 6-0-8					
Well Position	+N-S	48,637.5 ft	Northing:	1,301,705.53 ft	Latitude:	40° 9' 33.876 N
	+E-W	77,559.5 ft	Easting:	3,197,796.36 ft	Longitude:	104° 47' 32.316 W
Position Uncertainty		ft	Wellhead Elevation:	ft	Ground Level:	4,905.0 ft

Wellbore	Wellbore #1				
Magnetics	Model Name	Sample Date	Declination (°)	Dip Angle (°)	Field Strength (nT)
	IGRF200510	12/31/2009	9.02	66.91	53,174

Design	Design #1				
Audit Notes:					
Version:	Phase:	PROTOTYPE		Tie On Depth:	0.0
Vertical Section:	Depth From (TVD) (ft)	+N/-S (ft)	+E/-W (ft)	Direction (°)	
	0.0	0.0	0.0	275.02	

Plan Sections										
Measured Depth (ft)	Inclination (°)	Azimuth (°)	Vertical Depth (ft)	+N/-S (ft)	+E/-W (ft)	Dogleg Rate (°/100ft)	Build Rate (°/100ft)	Turn Rate (°/100ft)	TFO (°)	Target
0.0	0.00	0.00	0.0	0.0	0.0	0.00	0.00	0.00	0.00	
850.0	0.00	0.00	850.0	0.0	0.0	0.00	0.00	0.00	0.00	
1,491.1	12.82	275.02	1,485.7	6.3	-71.2	2.00	2.00	0.00	275.02	
6,473.9	12.82	275.02	6,344.3	103.1	-1,172.6	0.00	0.00	0.00	0.00	
7,114.9	0.00	0.00	6,980.0	109.3	-1,243.8	2.00	-2.00	0.00	180.00	
8,114.9	0.00	0.00	7,980.0	109.3	-1,243.8	0.00	0.00	0.00	0.00	lone 6-0-8 PBHL

EnCana Corporation

Planning Report

Database:	EDM	Local Co-ordinate Reference:	Well lone 6-0-8
Company:	DJ/Paradox/WTX	TVD Reference:	RKB @ 4918.0ft (TBD)
Project:	Wattenberg	MD Reference:	RKB @ 4918.0ft (TBD)
Site:	New Drills	North Reference:	True
Well:	lone 6-0-8	Survey Calculation Method:	Minimum Curvature
Wellbore:	Wellbore #1		
Design:	Design #1		

Planned Survey									
Measured Depth (ft)	Inclination (°)	Azimuth (°)	Vertical Depth (ft)	+N/-S (ft)	+E/-W (ft)	Vertical Section (ft)	Dogleg Rate (°/100ft)	Build Rate (°/100ft)	Turn Rate (°/100ft)
0.0	0.00	0.00	0.0	0.0	0.0	0.0	0.00	0.00	0.00
100.0	0.00	0.00	100.0	0.0	0.0	0.0	0.00	0.00	0.00
200.0	0.00	0.00	200.0	0.0	0.0	0.0	0.00	0.00	0.00
300.0	0.00	0.00	300.0	0.0	0.0	0.0	0.00	0.00	0.00
400.0	0.00	0.00	400.0	0.0	0.0	0.0	0.00	0.00	0.00
500.0	0.00	0.00	500.0	0.0	0.0	0.0	0.00	0.00	0.00
600.0	0.00	0.00	600.0	0.0	0.0	0.0	0.00	0.00	0.00
700.0	0.00	0.00	700.0	0.0	0.0	0.0	0.00	0.00	0.00
800.0	0.00	0.00	800.0	0.0	0.0	0.0	0.00	0.00	0.00
Surface									
850.0	0.00	0.00	850.0	0.0	0.0	0.0	0.00	0.00	0.00
900.0	1.00	275.02	900.0	0.0	-0.4	0.4	2.00	2.00	0.00
1,000.0	3.00	275.02	999.9	0.3	-3.9	3.9	2.00	2.00	0.00
1,100.0	5.00	275.02	1,099.7	1.0	-10.9	10.9	2.00	2.00	0.00
1,200.0	7.00	275.02	1,199.1	1.9	-21.3	21.4	2.00	2.00	0.00
1,300.0	9.00	275.02	1,298.2	3.1	-35.1	35.3	2.00	2.00	0.00
1,400.0	11.00	275.02	1,396.6	4.6	-52.4	52.6	2.00	2.00	0.00
1,491.1	12.82	275.02	1,485.7	6.3	-71.2	71.4	2.00	2.00	0.00
1,500.0	12.82	275.02	1,494.4	6.4	-73.1	73.4	0.00	0.00	0.00
1,600.0	12.82	275.02	1,591.9	8.4	-95.2	95.6	0.00	0.00	0.00
1,700.0	12.82	275.02	1,689.5	10.3	-117.3	117.8	0.00	0.00	0.00
1,800.0	12.82	275.02	1,787.0	12.3	-139.4	140.0	0.00	0.00	0.00
1,900.0	12.82	275.02	1,884.5	14.2	-161.6	162.2	0.00	0.00	0.00
2,000.0	12.82	275.02	1,982.0	16.1	-183.7	184.4	0.00	0.00	0.00
2,100.0	12.82	275.02	2,079.5	18.1	-205.8	206.6	0.00	0.00	0.00
2,200.0	12.82	275.02	2,177.0	20.0	-227.9	228.7	0.00	0.00	0.00
2,300.0	12.82	275.02	2,274.5	22.0	-250.0	250.9	0.00	0.00	0.00
2,400.0	12.82	275.02	2,372.0	23.9	-272.1	273.1	0.00	0.00	0.00
2,500.0	12.82	275.02	2,469.5	25.9	-294.2	295.3	0.00	0.00	0.00
2,600.0	12.82	275.02	2,567.0	27.8	-316.3	317.5	0.00	0.00	0.00
2,700.0	12.82	275.02	2,664.5	29.7	-338.4	339.7	0.00	0.00	0.00
2,800.0	12.82	275.02	2,762.0	31.7	-360.5	361.9	0.00	0.00	0.00
2,900.0	12.82	275.02	2,859.5	33.6	-382.6	384.1	0.00	0.00	0.00
3,000.0	12.82	275.02	2,957.0	35.6	-404.7	406.3	0.00	0.00	0.00
3,100.0	12.82	275.02	3,054.5	37.5	-426.8	428.5	0.00	0.00	0.00
3,200.0	12.82	275.02	3,152.1	39.5	-448.9	450.7	0.00	0.00	0.00
3,300.0	12.82	275.02	3,249.6	41.4	-471.0	472.8	0.00	0.00	0.00
3,400.0	12.82	275.02	3,347.1	43.3	-493.1	495.0	0.00	0.00	0.00
3,500.0	12.82	275.02	3,444.6	45.3	-515.2	517.2	0.00	0.00	0.00
3,600.0	12.82	275.02	3,542.1	47.2	-537.3	539.4	0.00	0.00	0.00
3,700.0	12.82	275.02	3,639.6	49.2	-559.4	561.6	0.00	0.00	0.00
3,800.0	12.82	275.02	3,737.1	51.1	-581.6	583.8	0.00	0.00	0.00
3,900.0	12.82	275.02	3,834.6	53.1	-603.7	606.0	0.00	0.00	0.00
4,000.0	12.82	275.02	3,932.1	55.0	-625.8	628.2	0.00	0.00	0.00
4,100.0	12.82	275.02	4,029.6	56.9	-647.9	650.4	0.00	0.00	0.00
4,200.0	12.82	275.02	4,127.1	58.9	-670.0	672.6	0.00	0.00	0.00
4,300.0	12.82	275.02	4,224.6	60.8	-692.1	694.7	0.00	0.00	0.00
4,400.0	12.82	275.02	4,322.1	62.8	-714.2	716.9	0.00	0.00	0.00
4,498.3	12.82	275.02	4,418.0	64.7	-735.9	738.8	0.00	0.00	0.00
Sussex									
4,500.0	12.82	275.02	4,419.6	64.7	-736.3	739.1	0.00	0.00	0.00
4,600.0	12.82	275.02	4,517.2	66.7	-758.4	761.3	0.00	0.00	0.00
4,700.0	12.82	275.02	4,614.7	68.6	-780.5	783.5	0.00	0.00	0.00
4,800.0	12.82	275.02	4,712.2	70.5	-802.6	805.7	0.00	0.00	0.00

EnCana Corporation

Planning Report

Database:	EDM	Local Co-ordinate Reference:	Well lone 6-0-8
Company:	DJ/Paradox/WTX	TVD Reference:	RKB @ 4918.0ft (TBD)
Project:	Wattenberg	MD Reference:	RKB @ 4918.0ft (TBD)
Site:	New Drills	North Reference:	True
Well:	lone 6-0-8	Survey Calculation Method:	Minimum Curvature
Wellbore:	Wellbore #1		
Design:	Design #1		

Planned Survey									
Measured Depth (ft)	Inclination (°)	Azimuth (°)	Vertical Depth (ft)	+N/-S (ft)	+E/-W (ft)	Vertical Section (ft)	Dogleg Rate (°/100ft)	Build Rate (°/100ft)	Turn Rate (°/100ft)
4,900.0	12.82	275.02	4,809.7	72.5	-824.7	827.9	0.00	0.00	0.00
5,000.0	12.82	275.02	4,907.2	74.4	-846.8	850.1	0.00	0.00	0.00
5,067.5	12.82	275.02	4,973.0	75.7	-861.7	865.1	0.00	0.00	0.00
Shannon									
5,100.0	12.82	275.02	5,004.7	76.4	-868.9	872.3	0.00	0.00	0.00
5,200.0	12.82	275.02	5,102.2	78.3	-891.0	894.5	0.00	0.00	0.00
5,300.0	12.82	275.02	5,199.7	80.3	-913.1	916.7	0.00	0.00	0.00
5,400.0	12.82	275.02	5,297.2	82.2	-935.2	938.8	0.00	0.00	0.00
5,500.0	12.82	275.02	5,394.7	84.1	-957.3	961.0	0.00	0.00	0.00
5,600.0	12.82	275.02	5,492.2	86.1	-979.4	983.2	0.00	0.00	0.00
5,700.0	12.82	275.02	5,589.7	88.0	-1,001.6	1,005.4	0.00	0.00	0.00
5,800.0	12.82	275.02	5,687.2	90.0	-1,023.7	1,027.6	0.00	0.00	0.00
5,900.0	12.82	275.02	5,784.7	91.9	-1,045.8	1,049.8	0.00	0.00	0.00
6,000.0	12.82	275.02	5,882.2	93.9	-1,067.9	1,072.0	0.00	0.00	0.00
6,100.0	12.82	275.02	5,979.8	95.8	-1,090.0	1,094.2	0.00	0.00	0.00
6,200.0	12.82	275.02	6,077.3	97.7	-1,112.1	1,116.4	0.00	0.00	0.00
6,300.0	12.82	275.02	6,174.8	99.7	-1,134.2	1,138.6	0.00	0.00	0.00
6,400.0	12.82	275.02	6,272.3	101.6	-1,156.3	1,160.7	0.00	0.00	0.00
6,473.9	12.82	275.02	6,344.3	103.1	-1,172.6	1,177.1	0.00	0.00	0.00
6,500.0	12.30	275.02	6,369.8	103.6	-1,178.3	1,182.8	2.00	-2.00	0.00
6,600.0	10.30	275.02	6,467.9	105.3	-1,197.8	1,202.4	2.00	-2.00	0.00
6,700.0	8.30	275.02	6,566.5	106.7	-1,213.9	1,218.6	2.00	-2.00	0.00
6,800.0	6.30	275.02	6,665.7	107.8	-1,226.5	1,231.3	2.00	-2.00	0.00
6,900.0	4.30	275.02	6,765.3	108.6	-1,235.7	1,240.5	2.00	-2.00	0.00
7,000.0	2.30	275.02	6,865.1	109.1	-1,241.5	1,246.3	2.00	-2.00	0.00
7,100.0	0.30	275.02	6,965.1	109.3	-1,243.7	1,248.5	2.00	-2.00	0.00
7,114.9	0.00	0.00	6,980.0	109.3	-1,243.8	1,248.6	2.00	-2.00	0.00
7,200.0	0.00	0.00	7,065.1	109.3	-1,243.8	1,248.6	0.00	0.00	0.00
7,252.9	0.00	0.00	7,118.0	109.3	-1,243.8	1,248.6	0.00	0.00	0.00
Niobrara									
7,300.0	0.00	0.00	7,165.1	109.3	-1,243.8	1,248.6	0.00	0.00	0.00
7,400.0	0.00	0.00	7,265.1	109.3	-1,243.8	1,248.6	0.00	0.00	0.00
7,500.0	0.00	0.00	7,365.1	109.3	-1,243.8	1,248.6	0.00	0.00	0.00
7,523.9	0.00	0.00	7,389.0	109.3	-1,243.8	1,248.6	0.00	0.00	0.00
Codell									
7,600.0	0.00	0.00	7,465.1	109.3	-1,243.8	1,248.6	0.00	0.00	0.00
7,700.0	0.00	0.00	7,565.1	109.3	-1,243.8	1,248.6	0.00	0.00	0.00
7,800.0	0.00	0.00	7,665.1	109.3	-1,243.8	1,248.6	0.00	0.00	0.00
7,900.0	0.00	0.00	7,765.1	109.3	-1,243.8	1,248.6	0.00	0.00	0.00
7,964.9	0.00	0.00	7,830.0	109.3	-1,243.8	1,248.6	0.00	0.00	0.00
J Sand									
8,000.0	0.00	0.00	7,865.1	109.3	-1,243.8	1,248.6	0.00	0.00	0.00
8,024.9	0.00	0.00	7,890.0	109.3	-1,243.8	1,248.6	0.00	0.00	0.00
A Marker									
8,100.0	0.00	0.00	7,965.1	109.3	-1,243.8	1,248.6	0.00	0.00	0.00
8,114.9	0.00	0.00	7,980.0	109.3	-1,243.8	1,248.6	0.00	0.00	0.00
Production									

EnCana Corporation

Planning Report

Database:	EDM	Local Co-ordinate Reference:	Well lone 6-0-8
Company:	DJ/Paradox/WTX	TVD Reference:	RKB @ 4918.0ft (TBD)
Project:	Wattenberg	MD Reference:	RKB @ 4918.0ft (TBD)
Site:	New Drills	North Reference:	True
Well:	lone 6-0-8	Survey Calculation Method:	Minimum Curvature
Wellbore:	Wellbore #1		
Design:	Design #1		

Design Targets

Target Name

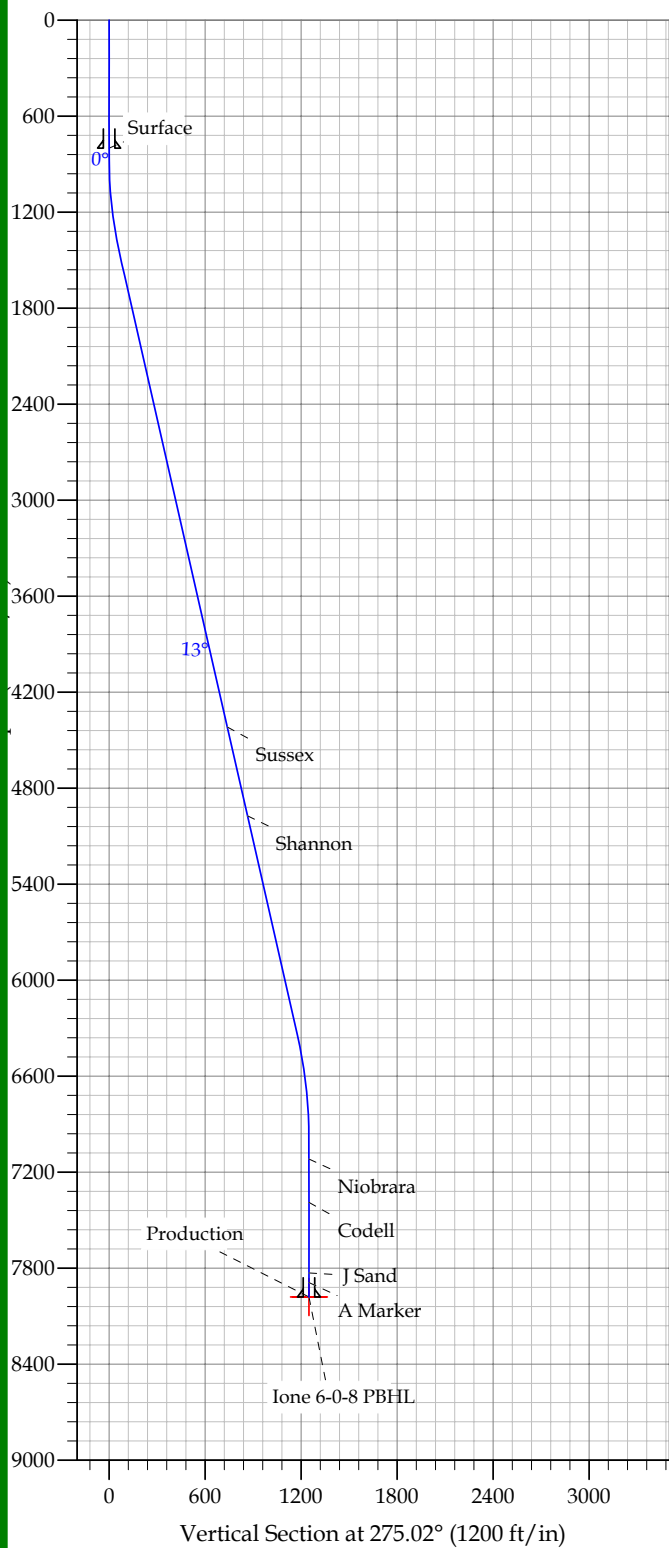
- hit/miss target	Dip Angle (°)	Dip Dir. (°)	TVD (ft)	+N/-S (ft)	+E/-W (ft)	Northing (ft)	Easting (ft)	Latitude	Longitude
- Shape									
lone 6-0-8 PBHL	0.00	0.00	7,980.0	109.3	-1,243.8	1,301,804.92	3,196,551.76	40° 9' 34.956 N	104° 47' 48.336 W
- plan hits target									
- Circle (radius 100.0)									

Casing Points

Measured Depth (ft)	Vertical Depth (ft)	Name	Casing Diameter (in)	Hole Diameter (in)
800.0	800.0	Surface	8.625	12.250
8,114.9	7,980.0	Production	4.500	7.875

Formations

Measured Depth (ft)	Vertical Depth (ft)	Name	Lithology	Dip (°)	Dip Direction (°)
4,498.3	4,418.0	Sussex		0.00	
5,067.5	4,973.0	Shannon		0.00	
7,252.9	7,118.0	Niobrara		0.00	
7,523.9	7,389.0	Codell		0.00	
7,964.9	7,830.0	J Sand		0.00	
8,024.9	7,890.0	A Marker		0.00	



REFERENCE INFORMATION

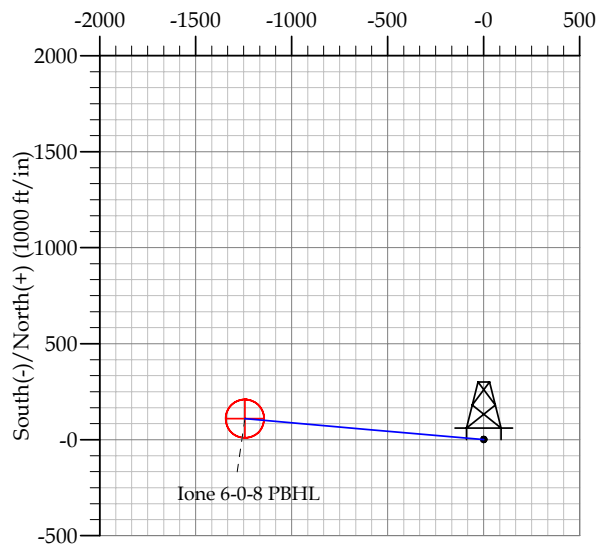
Co-ordinate (N/E) Reference: Well Ione 6-0-8, True North
 Vertical (TVD) Reference: RKB @ 4918.0ft (TBD)
 Section (VS) Reference: Slot - (0.0N, 0.0E)
 Measured Depth Reference: RKB @ 4918.0ft (TBD)
 Calculation Method:

WELL DETAILS: Ione 6-0-8

+N/-S	+E/-W	Northing	Easting	Ground Level:	Latitude	Longitude	Slot
0.0	0.0	1301705.53	3197796.36	4905.0	40° 9' 33.876 N	47° 32.316 W	

SECTION DETAILS

Sec	MD	Inc	Azi	TVD	+N/-S	+E/-W	DLeg	TFace	VSec	Target
1	0.0	0.00	0.00	0.0	0.0	0.0	0.00	0.00	0.0	
2	850.0	0.00	0.00	850.0	0.0	0.0	0.00	0.00	0.0	
3	1491.1	12.82	275.02	1485.7	6.3	-71.2	2.00	275.02	71.4	
4	6473.9	12.82	275.02	6344.3	103.1	-1172.6	0.00	0.00	1177.1	
5	7114.9	0.00	0.00	6980.0	109.3	-1243.8	2.00	180.00	1248.6	
6	8114.9	0.00	0.00	7980.0	109.3	-1243.8	0.00	0.00	1248.6	Ione 6-0-8 PBHL



FORMATION TOP DETAILS

TVDPath	MDPath	Formation
4418.0	4498.3	Sussex
4973.0	5067.5	Shannon
7118.0	7252.9	Niobrara
7389.0	7523.9	Codell
7830.0	7964.9	J Sand
7890.0	8024.9	A Marker

CASING DETAILS

TVD	MD	Name	Size
800.0	800.0	Surface	8.625
7980.0	8114.9	Production	4.500