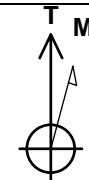
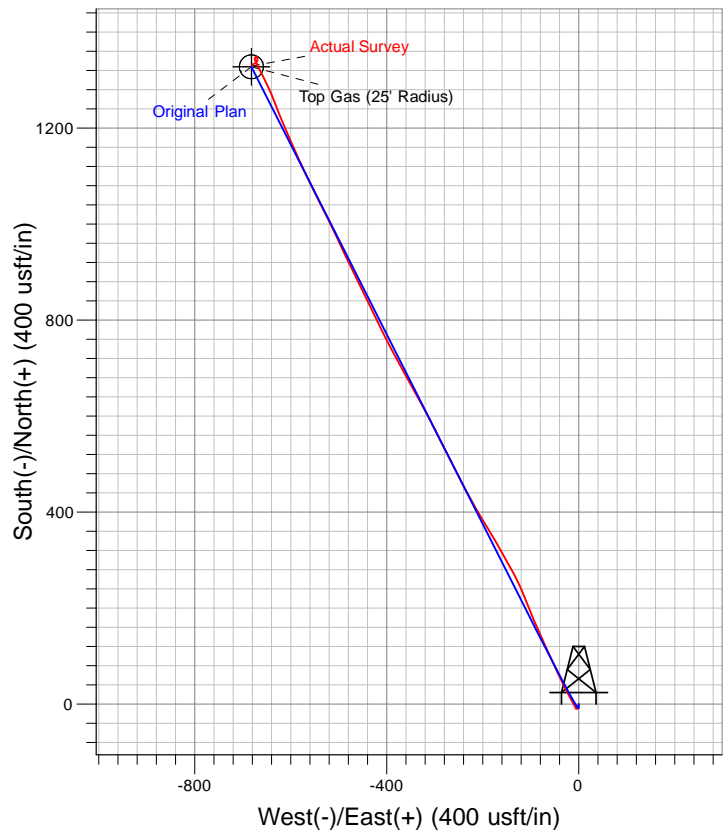
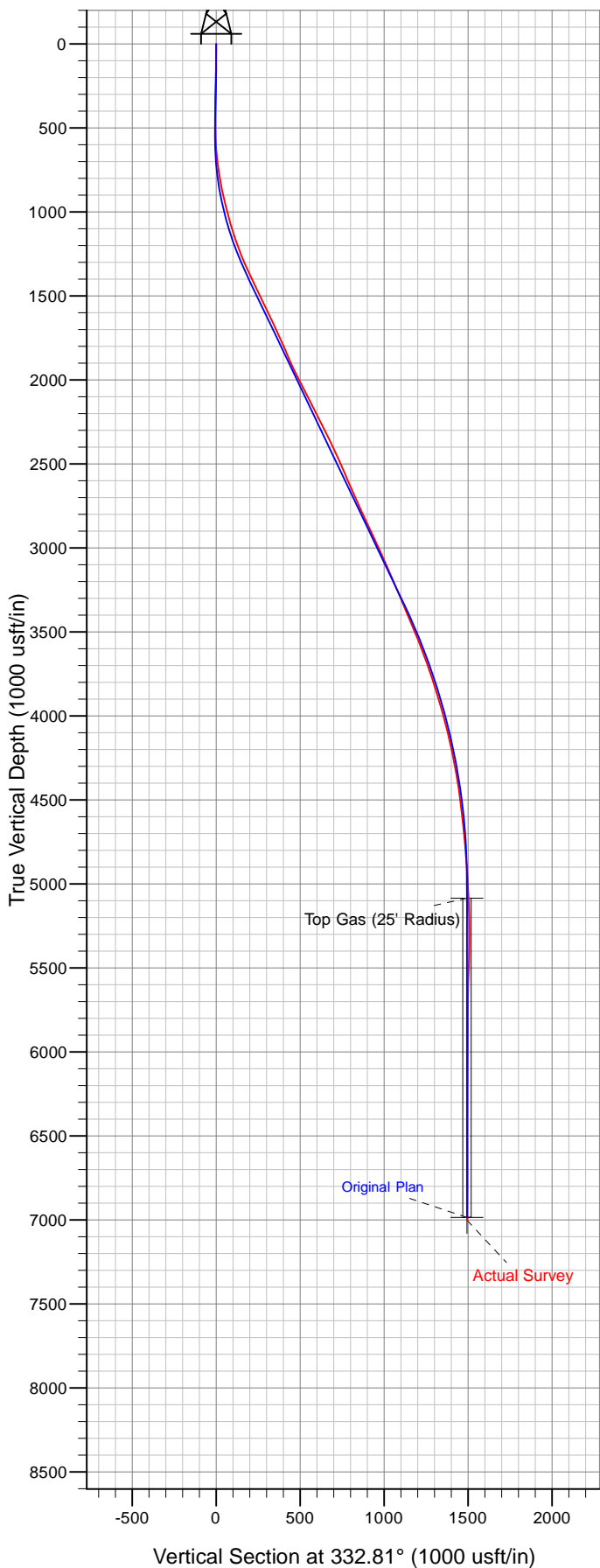




Well Name: GM 23-27
 Surface Location: GM 24-27 Pad
 North American Datum 1983 , US State Plane 1983. Colorado Central Zone
 Ground Elevation: 5604.0

+N/-S	+E/-W	Northing	Easting	Latitude	Longitude	Slot
0.0	0.0	1614208.20	2267682.80	39° 29' 27.816 N	108° 5' 42.704 W	B5

KELLY BUSHING @ 5628.0usft (H&P 278 (24') kjs)



Azimuths to True North
 Magnetic North: 10.41°
 Magnetic Field
 Strength: 52250.5snT
 Dip Angle: 65.72°
 Date: 4/28/2011
 Model: IGRF2010