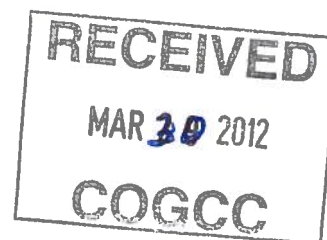


HALLIBURTON

MESA ENERGY PARTNERS LLC

**BDU 13-8-199
WILDCAT
Rio Blanco County , Colorado**



Cement Multiple Stages 02-Dec-2010

Post Job Report

The Road to Excellence Starts with Safety

Sold To #: 358666		Ship To #: 2819933		Quote #:		Sales Order #: 7806297		
Customer: MESA ENERGY PARTNERS LLC				Customer Rep: ED DARREL				
Well Name: BDU			Well #: 13-8-199			API/UWI #: 05-103-11760		
Field: WILDCAT		City (SAP): RANGELY		County/Parish: Rio Blanco			State: Colorado	
Lat: N 39.964 deg. OR N 39 deg. 57 min. 51.613 secs.				Long: W 108.448 deg. OR W -109 deg. 33 min. 7.182 secs.				
Contractor: Frontier			Rig/Platform Name/Num: FRONTIER 2					
Job Purpose: Cement Multiple Stages								
Well Type: Development Well			Job Type: Cement Multiple Stages					
Sales Person: KOHL, KYLE			Srcv Supervisor: HOEFER, BRYAN			MBU ID Emp #: 415775		

Job Personnel

HES Emp Name	Exp Hrs	Emp #	HES Emp Name	Exp Hrs	Emp #	HES Emp Name	Exp Hrs	Emp #
ANDERSON, ADAM S	14	456683	BLANCHETTE, JAMES George	32	371360	HOEFER, BRYAN D	14	415775
JENKINS, DEMON Lashaun	14	457892	JENSEN, SHANE Lynn	14	441759	LUNCEFORD, STEVEN John	14	457512
SCOLLARD, GARY R.	14	485297						

Equipment

HES Unit #	Distance-1 way	HES Unit #	Distance-1 way	HES Unit #	Distance-1 way	HES Unit #	Distance-1 way
10295581	110 mile	10567589C	110 mile	10784064	110 mile	10897909	110 mile
10938657	110 mile	10995027	110 mile	11006314	110 mile	11018454	110 mile
11259885	110 mile						

Job Hours

Date	On Location Hours	Operating Hours	Date	On Location Hours	Operating Hours	Date	On Location Hours	Operating Hours
12/1/2010	13	3	12/2/2010	2.5	2			

TOTAL Total is the sum of each column separately

Job

Formation Name					Date		Time	Time Zone	
Formation Depth (MD)		Top	Bottom		Called Out	01 - Dec - 2010	05:00	MST	
Form Type		BHST		On Location	01 - Dec - 2010	11:00	MST		
Job depth MD		10800. ft		Job Depth TVD	10800. ft	Job Started	01 - Dec - 2010	14:42	MST
Water Depth		Wk Ht Above Floor		4. ft	Job Completed	02 - Dec - 2010	00:51	MST	
Perforation Depth (MD)		From	To		Departed Loc				

Well Data

Description	New / Used	Max pressure psig	Size in	ID in	Weight lbm/ft	Thread	Grade	Top MD ft	Bottom MD ft	Top TVD ft	Bottom TVD ft
-------------	------------	-------------------	---------	-------	---------------	--------	-------	-----------	--------------	------------	---------------

Sales/Rental/3rd Party (HES)

Description	Qty	Qty uom	Depth	Supplier
R/A DENSOMETER W/CHART RECORDER, /JOB, ZI	1	JOB		
ADC (AUTO DENSITY CTRL) SYS, /JOB, ZI	1	JOB		
PORT. DATA ACQUIS. W/OPTICEM RT W/HES	1	EA		

Tools and Accessories

Type	Size	Qty	Make	Depth	Type	Size	Qty	Make	Depth	Type	Size	Qty	Make
Guide Shoe					Packer					Top Plug			
Float Shoe					Bridge Plug					Bottom Plug			
Float Collar					Retainer					SSR plug set			
Insert Float										Plug Container			
Stage Tool										Centralizers			

Miscellaneous Materials

Gelling Agt	Conc	Surfactant	Conc	Acid Type	Qty	Conc	%
Treatment Fld	Conc	Inhibitor	Conc	Sand Type	Size	Qty	

Fluid Data

Stage/Plug #: 1									
Fluid #	Stage Type	Fluid Name	Qty	Qty uom	Mixing Density lbm/gal	Yield ft ³ /sk	Mix Fluid Gal/sk	Rate bbl/min	Total Mix Fluid Gal/sk
1	Water		50.00	bbl	8.33	.0	.0	5.0	
2	Dyed Spacer		10.00	bbl	8.33	.0	.0	5.0	
3	12.0 HalCem	HALCEM (TM) SYSTEM (452986)	130.0	sacks	12.	2.24	11.74	5.0	11.74
		11.74 Gal	FRESH WATER						
4	13.1 HalCem	HALCEM (TM) SYSTEM (452986)	580.0	sacks	13.1	7.89	8.7	5.0	8.7
		8.7 Gal	FRESH WATER						
5	KCl Water Displacement		116.00	bbl	8.4	.0	.0	5	
		7.5 lbm/bbl	POTASSIUM CHLORIDE 2% (100001585)						
6	Water			bbl	8.33	.0	.0	5	
7	Mud Displacement			bbl	8.3	.0	.0	5	
8	Water			bbl	8.33	.0	.0	5.0	
9	12.0 HalCem	HALCEM (TM) SYSTEM (452986)	480.0	sacks	12.	2.09	10.64	5.0	10.64
		10.64 Gal	FRESH WATER						
10	KCl Water Displacement		98.00	bbl	8.4	.0	.0	6	
		7.5 lbm/bbl	POTASSIUM CHLORIDE 7% (100001585)						
Calculated Values		Pressures		Volumes					
Displacement	264.8	Shut In: Instant		Lost Returns	0	Cement Slurry	425.8	Pad	
Top Of Cement		5 Min		Cement Returns	0	Actual Displacement	264.8	Treatment	
Frac Gradient		15 Min		Spacers	70	Load and Breakdown		Total Job	
Rates									
Circulating	5	Mixing		5	Displacement	5	Avg. Job	5	
Cement Left In Pipe	Amount	45.79 ft	Reason	Shoe Joint					
Frac Ring # 1 @	ID	Frac ring # 2 @	ID	Frac Ring # 3 @	ID	Frac Ring # 4 @	ID		
The Information Stated Herein Is Correct				Customer Representative Signature					

The Road to Excellence Starts with Safety

Sold To #: 358666	Ship To #: 2819933	Quote #:	Sales Order #: 7806297
Customer: MESA ENERGY PARTNERS LLC		Customer Rep: ED DARREL	
Well Name: BDU	Well #: 13-8-199	API/UWI #: 05-103-11760	
Field: WILDCAT	City (SAP): RANGELY	County/Parish: Rio Blanco	State: Colorado
Legal Description:			
Lat: N 39.964 deg. OR N 39 deg. 57 min. 51.613 secs.		Long: W 108.448 deg. OR W -109 deg. 33 min. 7.182 secs.	
Contractor: Frontier		Rig/Platform Name/Num: FRONTIER 2	
Job Purpose: Cement Multiple Stages			Ticket Amount:
Well Type: Development Well		Job Type: Cement Multiple Stages	
Sales Person: KOHL, KYLE		Srvs Supervisor: HOEFER, BRYAN	MBU ID Emp #: 415775

Activity Description	Date/Time	Cht #	Rate bbl/min	Volume bbl		Pressure psig		Comments
				Stage	Total	Tubing	Casing	
Call Out	12/01/2010 05:00							
Pre-Convoy Safety Meeting	12/01/2010 07:30							WITH ALL HES EE'S
Depart from Service Center or Other Site	12/01/2010 07:35							
Arrive At Loc	12/01/2010 11:00							ARRIVED 1.5 hrs EARLY, RIG STILL RUNNING CASING
Assessment Of Location Safety Meeting	12/01/2010 12:00							WITH ALL HES EE'S
Pre-Rig Up Safety Meeting	12/01/2010 12:30							WITH ALL HES EE'S
Rig-Up Equipment	12/01/2010 12:35							IRON TO FLOOR, IRON TO PIT, WATER LINES, 1 660 BULK TRUCK, 1 FIELD STORAGE BIN, F-550
Pre-Job Safety Meeting	12/01/2010 14:30							WITH ALL HES EE'S AND RIG CREW
Start Job	12/01/2010 14:42							TD-10834' , TP-10804' , SJ-45.79' , MUD-9# , OH-7 7/8" , 4.5" CASING 11.6# P-110
Prime Pumps	12/01/2010 14:42							FRESH WATER
Test Lines	12/01/2010 14:44						5450.0	TESTED TO 5450 psi, NO LEAKS, TEST HELD GREAT
Pump Spacer 1	12/01/2010 14:47		5	50			485.0	FRESH WATER, FULL RETURNS
Pump Spacer 2	12/01/2010 14:59		5	10			500.0	RED DYE SPACER
Pump Lead Cement	12/01/2010 15:00		5	51.9			545.0	130 SACKS, 12.0 PPG, 2.24 FT3/SK, 11.74 GAL/SK

Sold To #: 358666

Ship To #: 2819933

Quote #:

Sales Order #:

7806297

SUMMIT Version: 7.20.130

Thursday, December 02, 2010 01:37:00

Cementing Job Log

Activity Description	Date/Time	Cht #	Rate bbl/min	Volume bbl		Pressure psig		Comments
				Stage	Total	Tubing	Casing	
Pump Tail Cement	12/01/2010 15:10		5	195.2			270.0	580 SACKS, 13.1 PPG, 1.89 FT3/SK, 8.7 GAL/SK
Shutdown	12/01/2010 15:49							
Drop Top Plug	12/01/2010 15:50							MULTIPLE PEOPLE VERIFIED PLUG LEFT HEAD
Other	12/01/2010 15:50							WASH PUMPS AND LINES
Pump Displacement	12/01/2010 15:56		5	92			90.0	KCL DISPLACEMENT FOR FIRST 80 BARRELS
Slow Rate	12/01/2010 16:15		3	93			35.0	WHILE DART PASSES THROUGH STAGE TOOL
Pump Displacement	12/01/2010 16:18		5	103			1540.0	
Slow Rate	12/01/2010 16:28		3	156			1520.0	LAST 10 BARRELS
Bump Plug	12/01/2010 16:40						2040.0	TOOK 400psi OVER
Check Floats	12/01/2010 16:42							FLOATS HELD
Drop Opening Device For Multiple Stage Cementer	12/01/2010 16:45						580.0	WAITED FOR 35 MINUTES, STAGE TOOL OPENED AT 580 PSI
Pump Water	12/01/2010 17:20			10			400.0	ESTABLISHED CIRCULATION THROUGH STAGE TOOL, THEN TURNED OVER TO RIG
End Job	12/01/2010 17:45							GOOD RETURNS THROUGHOUT JOB, CIRCULATED 55 BARRELS OF CEMENT OFF OF STAGE TOOL
Activity Description	Date/Time	Cht #	Rate bbl/min	Volume bbl		Pressure psig		Comments
				Stage	Total	Tubing	Casing	

Cementing Job Log

Start Job	12/01/2010 23:28							RIG CIRCULATED THROUGH STAGE TOOL FOR 6 HOURS, 2ND SAFETY MEETING WAS HELD WITH ALL HES AND RIG PERSONEL, WAITED ON WATER TRUCK FOR 2 HOURS, DID NOT PRIME UP UNTIL WATER TRUCK WAS ON LOCATION
Prime Pumps	12/01/2010 23:29		1	2				FRESH WATER
Test Lines	12/01/2010 23:30						5621.0	PRESSURE HELD GREAT, NO LEAKS
Pump Spacer 1	12/01/2010 23:32		5	10			170.0	FRESH WATER
Pump Tail Cement	12/01/2010 23:41		5	172.1			250.0	480 SACKS, 12.0 PPG, 2.09 FT3/SK, 10.64 GAL/SK
Shutdown	12/02/2010 00:16							
Other	12/02/2010 00:16							WASH PUMPS AND LINES
Drop Top Plug	12/02/2010 00:23							PLUG WAS FROZEN IN HEAD REQUIRING IT BE PUSHED DOWN INTO CASING MANUALLY, MULTIPLE PEOPLE VERIFIED PLUG LEFT HEAD
Pump Displacement	12/02/2010 00:25		6	98			880.0	KCL DISPLACEMENT
Slow Rate	12/02/2010 00:41		3	90			780.0	LAST 13 BARRELS
Bump Plug	12/02/2010 00:46		2	98			880.0	
Close Multiple Stage Cementer	12/02/2010 00:47		2	98			2200.0	PRESSURE TO LAND - 880 PSI, PRESSURE TO CLOSE - 2200 PSI
Shutdown	12/02/2010 00:49							
End Job	12/02/2010 00:51							
Post-Job Safety Meeting (Pre Rig-Down)	12/02/2010 00:55							WITH ALL HES EE'S
Rig-Down Equipment	12/02/2010 01:30							
Pre-Convoy Safety Meeting	12/02/2010 02:30							WITH ALL HES EE'S
Activity Description	Date/Time	Cht	Rate bbl/min	Volume bbl	Pressure psig	Comments		

Sold To # : 358666

Ship To # :2819933

Quote # :

Sales Order # :

7806297

SUMMIT Version: 7.20.130

Thursday, December 02, 2010 01:37:00

HALLIBURTON

Cementing Job Log

		#		Stage	Total	Tubing	Casing	
Depart Location for Service Center or Other Site	12/02/2010 02:35							THANK YOU FOR USING GRAND JUNCTION HALLIBURTON CEMENT, BRYAN HOEFER AND CREW

Sold To # : 358666

Ship To # :2819933

Quote # :

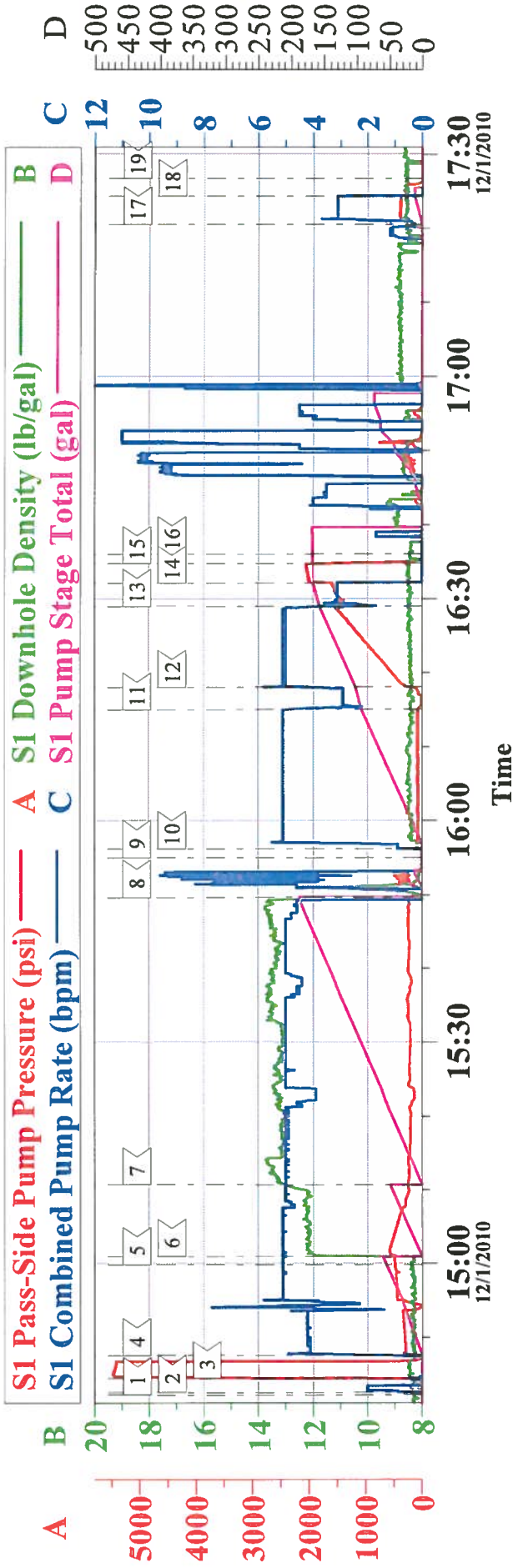
Sales Order # : 7806297

SUMMIT Version: 7.20.130

Thursday, December 02, 2010 01:37:00

MESA

BDU-13-8-199, STAGE #1



Local Event Log			
Maximum	SPPP	Maximum	SPPP
1 START JOB	14:42:16 -12.70	2 FILL LINES	14:42:35 808.1
3 PRESSURE TEST	14:44:25 5472	4 H2O SPACER	14:47:35 488.3
5 DYED SPACER	14:59:51 496.3	6 LEAD CEMENT	15:00:57 582.3
7 TAIL CEMENT	15:10:41 266.3	8 SHUTDOWN/WASH LINES	15:49:43 503.3
9 DROP DART	15:55:00 -12.70	10 DISPLACEMENT	15:56:11 80.30
11 SLOW RATE	16:15:01 197.8	12 RESUME RATE	16:18:03 1545
13 SLOW RATE	16:28:59 1620	14 BUMP PLUG	16:32:07 2056
15 CHECK FLOATS	16:34:44 1899	16 DROP MSC OPENING TOOL	16:36:03 762.3
17 PRESSURE UP ON MSC OPENER	17:20:31 566.3	18 TURN OVER TO RIG TO CIRCULATE	17:24:16 389.3
19 END JOB	17:26:43 58.30		

Customer: MESA	Job Date: 01-Dec-2010	Sales Order #: 7806297
Well Description: BDU 13-8-199	Job type: 2 STAGE	ADC Used: YES
Customer Rep:	Service Supervisor: BRYAN HOEFER	Operator/ Pump: ANDERSON/ #3

BDU-13-8-199,STAGE #2



Customer:	MESA	Job Date:	01-Dec-2010	Sales Order #:	7806297
Well Description:	BDU-13-8-199	Job type:	2 STAGE	ADC Used:	YES
Customer Rep:	ED DARREL	Service Supervisor:	BRYAN HOEFER	Operator/ Pump:	ANDERSON/ #3