

HALLIBURTON

WILLIAMS PRODUCTION RMT INC - EBUS

SG 313-23
GALETON
Garfield County , Colorado

Cement Surface Casing
08-Jan-2012

Post Job Summary

The Road to Excellence Starts with Safety

Sold To #: 300721	Ship To #: 2898374	Quote #:	Sales Order #: 9153011
Customer: WILLIAMS PRODUCTION RMT INC - EBUS	Customer Rep: WILSON, W.C		
Well Name: SG	Well #: 313-23	API/UWI #:	
Field: GALETON	City (SAP): PARACHUTE	County/Parish: Garfield	State: Colorado
Contractor: H&P 280	Rig/Platform Name/Num: H&P 280		
Job Purpose: Cement Surface Casing			
Well Type: Development Well	Job Type: Cement Surface Casing		
Sales Person: SCOTT, KYLE	Srv Supervisor: LEIST, JAMES	MBU ID Emp #: 362787	

Job Personnel

HES Emp Name	Exp Hrs	Emp #	HES Emp Name	Exp Hrs	Emp #	HES Emp Name	Exp Hrs	Emp #
LEIST, JAMES R	2	362787	LYNGSTAD, FREDRICK D	2	403742	SALAZAR, PAUL Omar	2	445614
SMITH, CHRISTOPHER Scott	2	452619						

Equipment

HES Unit #	Distance-1 way	HES Unit #	Distance-1 way	HES Unit #	Distance-1 way	HES Unit #	Distance-1 way
10567589C	60 mile	10784053	60 mile	10951245	60 mile	10995027	60 mile

Job Hours

Date	On Location Hours	Operating Hours	Date	On Location Hours	Operating Hours	Date	On Location Hours	Operating Hours
1-7-12	2	0	1-8-12	11	2			

TOTAL Total is the sum of each column separately

Job

Job Times

Formation Name	Top	Bottom	Called Out	Date	Time	Time Zone
Formation Depth (MD)			On Location	07 - Jan - 2012	18:00	MST
Form Type	BHST		Job Started	07 - Jan - 2012	21:00	MST
Job depth MD	600. ft	Job Depth TVD	Job Completed	08 - Jan - 2012	10:17	MST
Water Depth		Wk Ht Above Floor	Job Completed	08 - Jan - 2012	10:54	MST
Perforation Depth (MD)	From	To	Departed Loc	08 - Jan - 2012	12:30	MST

Well Data

Description	New / Used	Max pressure psig	Size in	ID in	Weight lbm/ft	Thread	Grade	Top MD ft	Bottom MD ft	Top TVD ft	Bottom TVD ft
-------------	------------	-------------------	---------	-------	---------------	--------	-------	-----------	--------------	------------	---------------

Sales/Rental/3rd Party (HES)

Description	Qty	Qty uom	Depth	Supplier
PLUG,CMTG,TOP,9 5/8,HWE,8.16 MIN/9.06 MA	1	EA		

Tools and Accessories

Type	Size	Qty	Make	Depth	Type	Size	Qty	Make	Depth	Type	Size	Qty	Make
Guide Shoe					Packer					Top Plug	9.625	1	
Float Shoe					Bridge Plug					Bottom Plug			
Float Collar					Retainer					SSR plug set			
Insert Float										Plug Container	9.625	1	
Stage Tool										Centralizers			

Miscellaneous Materials

Gelling Agt	Conc	Surfactant	Conc	Acid Type	Qty	Conc	%
Treatment Fld	Conc	Inhibitor	Conc	Sand Type	Size	Qty	

Fluid Data

Stage/Plug #: 1	Fluid #	Stage Type	Fluid Name	Qty	Qty uom	Mixing Density lbm/gal	Yield ft ³ /sk	Mix Fluid Gal/sk	Rate bbl/min	Total Mix Fluid Gal/sk
-----------------	---------	------------	------------	-----	---------	------------------------	---------------------------	------------------	--------------	------------------------

Stage/Plug #: 1

Stage/Plug #: 1									
Fluid #	Stage Type	Fluid Name	Qty	Qty uom	Mixing Density lbm/gal	Yield ft ³ /sk	Mix Fluid Gal/sk	Rate bbl/min	Total Mix Fluid Gal/sk
1	Fresh Water		20.00	bbl	8.33	.0	.0	4	
2	VersaCem Tail	VERSACEM (TM) SYSTEM (452010)	160.0	sacks	12.8	2.11	11.72	8	11.72
		11.724 Gal	FRESH WATER						
3	Displacement Fluid		42.00	bbl	8.34	.0	.0	10	
Calculated Values		Pressures		Volumes					
Displacement	42	Shut In: Instant		Lost Returns	0	Cement Slurry	60	Pad	
Top Of Cement	SURFACE	5 Min		Cement Returns	2	Actual Displacement	42	Treatment	
Frac Gradient		15 Min		Spacers	20	Load and Breakdown		Total Job	
Rates									
Circulating		Mixing		Displacement		Avg. Job			
Cement Left In Pipe	Amount	43.37 ft	Reason	Shoe Joint					
Frac Ring # 1 @	ID	Frac ring # 2 @	ID	Frac Ring # 3 @	ID	Frac Ring # 4 @	ID		
The Information Stated Herein Is Correct				Customer Representative Signature					

The Road to Excellence Starts with Safety

Sold To #: 300721		Ship To #: 2898374		Quote #:		Sales Order #: 9153011	
Customer: WILLIAMS PRODUCTION RMT INC - EBUS				Customer Rep: WILSON, W.C			
Well Name: SG			Well #: 313-23		API/UWI #:		
Field: GALETON		City (SAP): PARACHUTE		County/Parish: Garfield		State: Colorado	
Legal Description:							
Lat: N 0 deg. OR N 0 deg. 0 min. 0 secs.				Long: E 0 deg. OR E 0 deg. 0 min. 0 secs.			
Contractor: H&P 280			Rig/Platform Name/Num: H&P 280				
Job Purpose: Cement Surface Casing						Ticket Amount:	
Well Type: Development Well			Job Type: Cement Surface Casing				
Sales Person: SCOTT, KYLE			Srvc Supervisor: LEIST, JAMES			MBU ID Emp #: 362787	

Activity Description	Date/Time	Cht #	Rate bbl/min	Volume bbl		Pressure psig		Comments
				Stage	Total	Tubing	Casing	
Call Out	01/07/2012 18:00							
Pre-Convoy Safety Meeting	01/07/2012 20:00							WITH ALL HES PERSONNEL
Arrive At Loc	01/07/2012 21:00							RUNNING CASING
Pre-Rig Up Safety Meeting	01/07/2012 21:30							WITH ALL ON HES PERSONNEL
Rig-Up Completed	01/07/2012 22:00							RIG CIRULATED FOR 1 HOUR PRIOR TO CMT JOB, GOOD RETURNS THROUGHOUT JOB
Pre-Job Safety Meeting	01/08/2012 10:00							WITH ALL ON LOCATION PERSONNEL
Start Job	01/08/2012 10:17							TP- 583.09, TD- 600, S.J.-43.37, MUD# 9, CENT- 7
Pressure Test	01/08/2012 10:19							2520 PSI
Pump Spacer	01/08/2012 10:23		4	20			100.0	FRESH WATER
Pump Tail Cement	01/08/2012 10:28		8	60			460.0	160 SKS, 12.8 PPG, 2.11 FT3/SK, 11.75 GAL/SK
Shutdown	01/08/2012 10:36							TO DROP TOP PLUG
Drop Top Plug	01/08/2012 10:39							AWAY
Pump Displacement	01/08/2012 10:39		10	42			370.0	FRESH WATER, 2 BBLS CMT TO SURFACE
Slow Rate	01/08/2012 10:45		2	30			120.0	TO BUMP PLUG
Bump Plug	01/08/2012 10:50		2	42			125.0	PLUG BUMPED

Sold To #: 300721

Ship To #: 2898374

Quote #:

Sales Order #:

9153011

SUMMIT Version: 7.2.27

Sunday, January 08, 2012 11:46:00

Activity Description	Date/Time	Cht #	Rate bbl/ min	Volume bbl		Pressure psig		Comments
				Stage	Total	Tubing	Casing	
Check Floats	01/08/2012 10:54						880.0	HOLDING
End Job	01/08/2012 10:54							
Pre-Rig Down Safety Meeting	01/08/2012 11:15							WITH ALL HES PERSONNEL
Rig-Down Completed	01/08/2012 12:00							
Pre-Convoy Safety Meeting	01/08/2012 12:30							WITH ALL HES PERSONNEL
Comment	01/08/2012 12:30							THANKYOU FOR USING HALLIBURTON CEMENT, JAMES LEIST AND CREW

HALLIBURTON

Water Analysis Report

Company: WILLIAMS
Submitted by: J. LEIST
Attention: LAB TECH
Lease SG
Well # 313-23

Date: 1/8/2012
Date Rec.:
S.O.# 9153011
Job Type: surface

Specific Gravity	<i>MAX</i>	1
pH	<i>8</i>	6.5
Potassium (K)	<i>5000</i>	500 Mg / L
Calcium (Ca)	<i>500</i>	0 Mg / L
Iron (FE2)	<i>300</i>	3 Mg / L
Chlorides (Cl)	<i>3000</i>	0 Mg / L
Sulfates (SO ₄)	<i>1500</i>	<200 Mg / L
Chlorine (Cl ₂)		0 Mg / L
Temp	<i>40-80</i>	40 Deg
Total Dissolved Solids		520 PPM

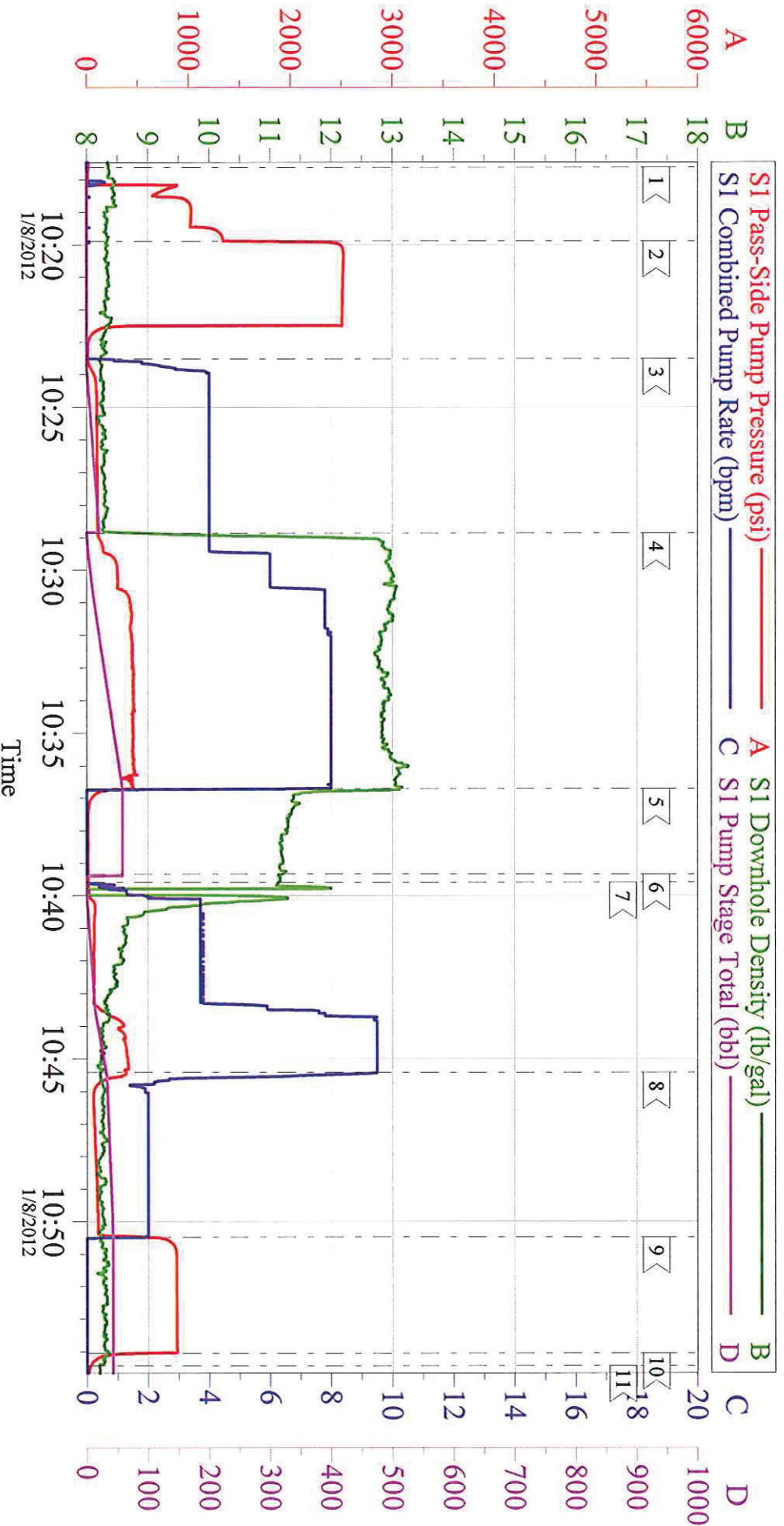
Respectfully: JAMES LEIST
Title: CEMENTING SUPERVISOR
Location: GRAND JUNCTION

NOTICE:

This report is limited to the described sample tested. Any person using or relying on this report agrees that Halliburton shall not be liable for any loss or damage whether due to act or omission resulting from such report c

WILLIAMS PRODUCTION SG 313-23

9 5/8 SURFACE CASING



Customer: WILLIAMS
Well Description: SG 313-23
Company Rep: W.C. WILSON

Job Date: 08-Jan-2012
Job Type: SURFACE
Cement Supervisor: JAMES LEIST

Sales Order #: 9153011
ADC Used: YES
Elite #3: CHRIS SMITH

HALLIBURTON

WPX ENERGY ROCKY MOUNTAIN LLC-EBUS

**SG 313-23
GRAND VALLEY
Garfield County , Colorado**

Squeeze Perfs
22-Feb-2012

Post Job Summary

The Road to Excellence Starts with Safety

Sold To #: 300721	Ship To #: 2898374	Quote #:	Sales Order #: 9302541
Customer: WPX ENERGY ROCKY MOUNTAIN LLC-EBUS	Customer Rep:		
Well Name: SG	Well #: 313-23	API/UWI #:	
Field: GRAND VALLEY	City (SAP): PARACHUTE	County/Parish: Garfield	State: Colorado
Contractor: WORKOVER	Rig/Platform Name/Num: WORKOVER		
Job Purpose: Squeeze Perfs			
Well Type: Development Well	Job Type: Squeeze Perfs		
Sales Person: MAYO, MARK	Srv Supervisor: NICKLE, RYON	MBU ID Emp #: 454759	

Job Personnel

HES Emp Name	Exp Hrs	Emp #	HES Emp Name	Exp Hrs	Emp #	HES Emp Name	Exp Hrs	Emp #
DEUSSEN, EDWARD Eric	6	485182	MILLER, KEVIN Paul	6	443040	NICKLE, RYON	6	454759
SPARKS, CLIFFORD Paul	6	502476	WOLFE, JON P	6	485217			

Equipment

HES Unit #	Distance-1 way	HES Unit #	Distance-1 way	HES Unit #	Distance-1 way	HES Unit #	Distance-1 way
10616651C	60 mile	10867425	60 mile	10897891	60 mile	10951250	60 mile
10995025	60 mile	11021972	60 mile	11027039	60 mile	11583915	60 mile

Job Hours

Date	On Location Hours	Operating Hours	Date	On Location Hours	Operating Hours	Date	On Location Hours	Operating Hours
2/22/2012	6	3.5						

TOTAL Total is the sum of each column separately

Job
Job Times

Formation Name	Top	Bottom	Called Out	Date	Time	Time Zone
Formation Depth (MD)			On Location	22 - Feb - 2012	03:00	MST
Form Type	BHST		Job Started	22 - Feb - 2012	06:20	MST
Job depth MD	3922. ft	Job Depth TVD	Job Completed	22 - Feb - 2012	09:06	MST
Water Depth		Wk Ht Above Floor	Departed Loc	22 - Feb - 2012	10:24	MST
Perforation Depth (MD)	From 3922	To			12:30	MST

Well Data

Description	New / Used	Max pressure psig	Size in	ID in	Weight lbm/ft	Thread	Grade	Top MD ft	Bottom MD ft	Top TVD ft	Bottom TVD ft
-------------	------------	-------------------	---------	-------	---------------	--------	-------	-----------	--------------	------------	---------------

Tools and Accessories

Type	Size	Qty	Make	Depth	Type	Size	Qty	Make	Depth	Type	Size	Qty	Make
Guide Shoe					Packer					Top Plug			
Float Shoe					Bridge Plug					Bottom Plug			
Float Collar					Retainer	4.5"	1		3802	SSR plug set			
Insert Float										Plug Container			
Stage Tool										Centralizers			

Miscellaneous Materials

Gelling Agt	Conc	Surfactant	Conc	Acid Type	Qty	Conc	%
Treatment Fld	Conc	Inhibitor	Conc	Sand Type	Size	Qty	

Fluid Data

Stage/Plug #: 1	Fluid #	Stage Type	Fluid Name	Qty	Qty uom	Mixing Density lbm/gal	Yield ft3/sk	Mix Fluid Gal/sk	Rate bbl/min	Total Mix Fluid Gal/sk
-----------------	---------	------------	------------	-----	---------	------------------------	--------------	------------------	--------------	------------------------

Stage/Plug #: 1	Fluid #	Stage Type	Fluid Name	Qty	Qty uom	Mixing Density uom	Yield uom	Mix Fluid uom	Rate uom	Total Mix Fluid uom
-----------------	---------	------------	------------	-----	---------	--------------------	-----------	---------------	----------	---------------------

Stage/Plug #: 1									
Fluid #	Stage Type	Fluid Name	Qty	Qty uom	Mixing Density lbm/gal	Yield ft ³ /sk	Mix Fluid Gal/sk	Rate bbl/min	Total Mix Fluid Gal/sk
1	Injection Test		5.00	bbl	8.33	.0	.0	2	
2	Squeezecem Cement	SQUEEZECM (TM) SYSTEM (452971)	650.0	sacks	15.8	1.15	5.0	3	5.0
5 Gal		FRESH WATER							
3	Displacement		14.5	bbl	8.33	.0	.0	2.3	
Calculated Values		Pressures		Volumes					
Displacement	14.5	Shut In: Instant		Lost Returns		Cement Slurry	127.6	Pad	
Top Of Cement		5 Min		Cement Returns	1.5	Actual Displacement	14.5	Treatment	
Frac Gradient		15 Min		Spacers	5	Load and Breakdown		Total Job	147.1
Rates									
Circulating		Mixing	3	Displacement	1.5	Avg. Job	2.25		
Cement Left In Pipe	Amount	0 ft	Reason						
Frac Ring # 1 @	ID	Frac ring # 2 @	ID	Frac Ring # 3 @	ID	Frac Ring # 4 @	ID		
The Information Stated Herein Is Correct				Customer Representative Signature					

The Road to Excellence Starts with Safety

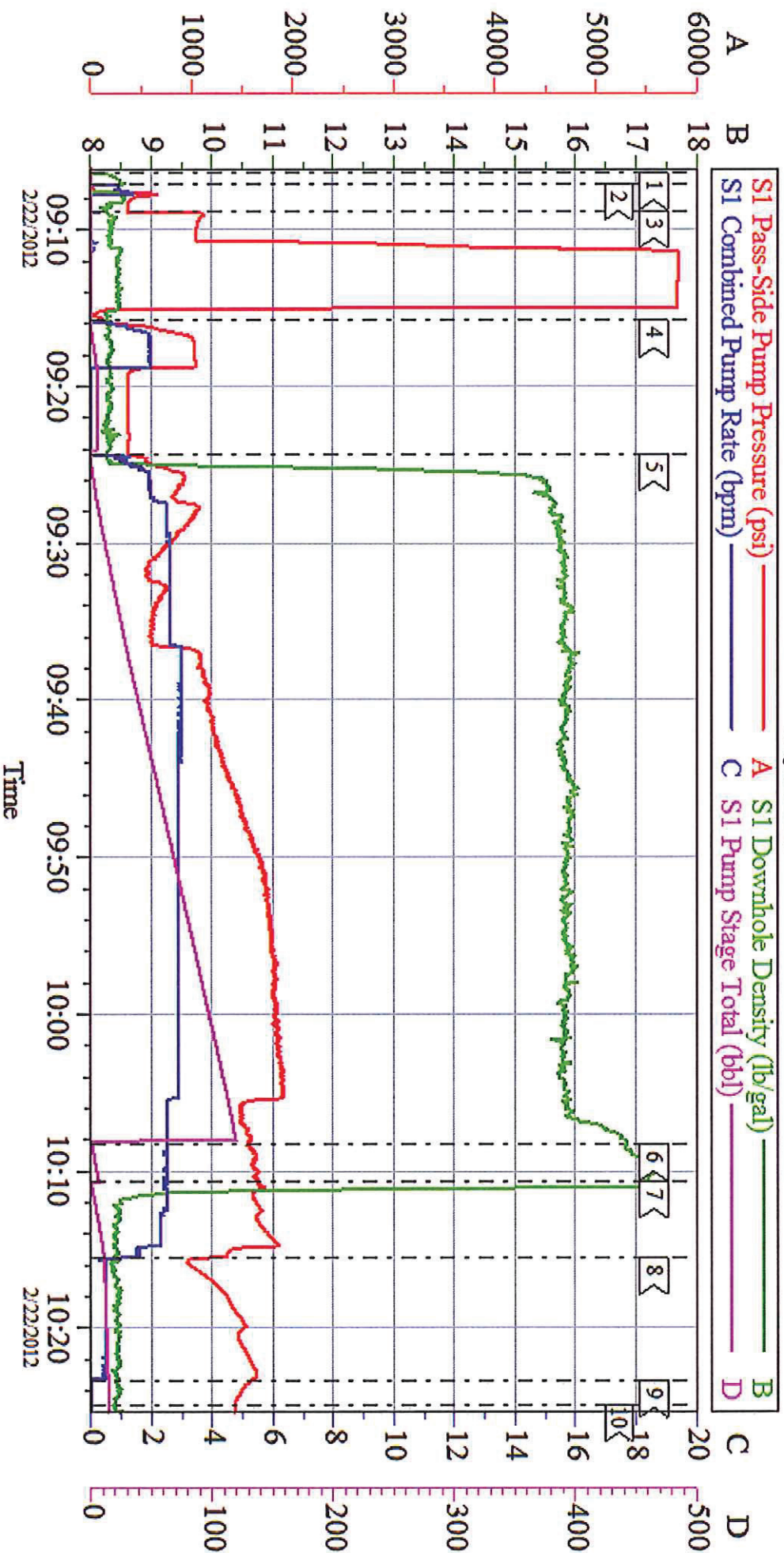
Sold To #: 300721	Ship To #: 2898374	Quote #:	Sales Order #: 9302541
Customer: WPX ENERGY ROCKY MOUNTAIN LLC-EBUS		Customer Rep:	
Well Name: SG		Well #: 313-23	API/UWI #:
Field: GRAND VALLEY	City (SAP): PARACHUTE	County/Parish: Garfield	State: Colorado
Legal Description:			
Lat: N 0 deg. OR N 0 deg. 0 min. 0 secs.		Long: E 0 deg. OR E 0 deg. 0 min. 0 secs.	
Contractor: WORKOVER		Rig/Platform Name/Num: WORKOVER	
Job Purpose: Squeeze Perfs			Ticket Amount:
Well Type: Development Well		Job Type: Squeeze Perfs	
Sales Person: MAYO, MARK		Srvc Supervisor: NICKLE, RYON	MBU ID Emp #: 454759

Activity Description	Date/Time	Cht #	Rate bbl/ min	Volume bbl		Pressure psig		Comments
				Stage	Total	Tubing	Casing	
Call Out	02/22/2012 03:00							HES CEMENT CREW
Pre-Convoy Safety Meeting	02/22/2012 05:15							ALL HES CEMENT CREW
Crew Leave Yard	02/22/2012 05:30							
Arrive At Loc	02/22/2012 06:20							GATE TO LOCATION LOCKED, WAITED FOR PUSHER TO ARRIVE
Assessment Of Location Safety Meeting	02/22/2012 06:40							ALL HES CEMENT CREW
Other	02/22/2012 06:50							SPOT EQUIPMENT; 1 CEMENTERS F 450, 1 ELITE PUMPING UNIT, 2 660 BULK TRANSPORT
Pre-Rig Up Safety Meeting	02/22/2012 07:00							ALL HES CEMENT CREW, RIG UP COMPLETE AT 0730, WAITED ON RIG CREW TO RUN TUBING DOWN HOLE AND COMPLETE INJECTION TEST- 35 BBLS @ 4BBLS / MIN @ 500 PSI
Pre-Job Safety Meeting	02/22/2012 08:45							ALL HES CEMENT CREW, RIG CREW, COMPANY REP, AVAILABLE 3RD PARTY EE'S
Activity Description	Date/Time	Cht #	Rate bbl/ min	Volume bbl		Pressure psig		Comments
				Stage	Total	Tubing	Casing	

Start Job	02/22/2012 09:06							PACKER- 3802' TOP PERF- 3922' , NO BRIDGE PLUG SET BELOW PERFORATIONS, PRODUCTION CASING- 4.5" 11.6#/FT E-80, TUBING- 2.375" 4.7# J-55 WELL FLUID- 8.4 PPG
Other	02/22/2012 09:07		2	0.7			630.0	FILL LINES, FRESH WATER
Pressure Test	02/22/2012 09:08							STALL OUT @ 1051 PSI, HELD FOR 30 SEC. PRESSURE UP TO 5832 PSI HELD FOR 3 MIN, PRESSURE DROP TO 5807 PSI
Injection Test	02/22/2012 09:15		2	5			1047. 0	PER CO REP, PREVIOUS DAYS INJECTION TEST @ 2.75 BBL / MIN RESULTED 500 PSI
Pump Lead Cement	02/22/2012 09:24		3	121			1875. 0	600 SKS; 15.8 PPG, 1.15 FT3/SK, 5 GAL/SK
Pump Tail Cement	02/22/2012 10:08		2.5	6.6				50 SKS; 17 PPG, .99 FT3/SK, 3.77 GAL/SK
Pump Displacement	02/22/2012 10:10		2.3	14.5			1700. 0	FRESH WATER, MEASURED OUT OF DISPLACEMENT TANKS. PROGRESSIVELY SLOWED RATE PRIOR TO REACHING 11.5 BBLs DISPLACEMENT PUMPED, TO .5 BBLs / MIN, AT 11.5 BBLs AWAY RIG CLOSED BRADEN HEAD (10:15 AM), PUMPED REMAINING 3 BBLs AT .5 BBLs / MIN
Shutdown	02/22/2012 10:23							TURNED OVER TO RIG TO REVERSE OUT, 1.5 BBLs CEMENT RETURNED
End Job	02/22/2012 10:24							
Post-Job Safety Meeting (Pre Rig-Down)	02/22/2012 10:26							ALL HES CEMENT CREW
Pre-Convoy Safety Meeting	02/22/2012 12:15							ALL HES CEMENT CREW

Activity Description	Date/Time	Cht #	Rate bbl/ min	Volume bbl		Pressure psig		Comments
				Stage	Total	Tubing	Casing	
Crew Leave Location	02/22/2012 12:30							THANK YOU FOR USING HALLIBURTON CEMENTING, RYON NICKLE AND CREW

WPX - SG 313-23 SQUEEZE



Customer	WPX ENERGY ROCKY MOUNTAIN LLC-BUS	Job Date:	22-Feb-2012	Sales Order #:	9302541
Well Description:	SG 313-23	Job Type:	SQUEEZE	ADC Used:	YES
Company Rep:	OJACOBSON / KYLE KOHL	Cement Supervisor:	RYON NICKLE	File # / Operator:	E4 / ED DUESSEN

HALLIBURTON

Water Analysis Report

Company:	<u>WPX</u>	Date:	<u>2/22/2012</u>
Submitted by:	<u>RYON NICKLE</u>	Date Rec.:	<u>2/22/2012</u>
Attention:	<u>LAB</u>	S.O.#	<u>9302541</u>
Lease	<u>WORKOVER</u>	Job Type:	<u>SQUEEZE</u>
Well #	<u>SG 313-23</u>		

Specific Gravity	<i>MAX</i>	<i>1</i>
pH	<i>8</i>	<i>7.5</i>
Potassium (K)	<i>5000</i>	<i>450 Mg / L</i>
Hrdness	<i>500</i>	<i>250 Mg / L</i>
Iron (FE2)	<i>300</i>	<i>0 Mg / L</i>
Chlorides (Cl)	<i>3000</i>	<i>0 Mg / L</i>
Sulfates (SO ₄)	<i>1500</i>	<i><200 Mg / L</i>
Temp	<i>40-80</i>	<i>39 Deg</i>
Total Dissolved Solids		<i>370 Mg / L</i>

Respectfully: RYON NICKLE

Title: CEMENTING SUPERVISOR

Location: Grand Junction, CO

NOTICE:

This report is limited to the described sample tested. Any person using or relying on this report agrees that Halliburton shall not be liable for any loss or damage whether due to act or omission resulting from such report.