

76 N. R67 W. 6th. P.M.

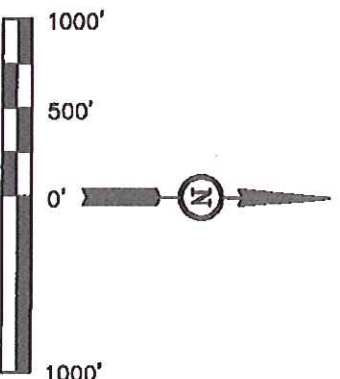
Well location, H-Y #29-21-4, located as shown in the NE 1/4 NW 1/4 of Section 29, T6N, R67W, 6th P.M., Weld County, Colorado.

BASIS OF ELEVATION

USGS COOPERATIVE BASE NETWORK CONTROL STATION,
DESIGNATION 'VERMILYEA', NGS DATA SHEET LISTS THE
NAVD 88 ELEVATION AS BEING 5026 FEET

BASIS OF BEARINGS

BASIS OF BEARINGS IS A G.P.S. OBSERVATION.



CERTIFICATE

THIS IS TO CERTIFY THAT THE ABOVE PLAT WAS PREPARED FROM FIELD NOTES OF ACTUAL SURVEYS MADE BY ME OR UNDER MY SUPERVISION AND THAT THE SAME ARE TRUE AND CORRECT TO THE BEST OF MY KNOWLEDGE AND BELIEF.

REMSID: 02-29-12

REGISTERED LAND SURVEYOR
REGISTRATION NO. 17492
STATE OF COLORADO
02-29-12

UJINAH ENGINEERING & LAND SURVEYING

85 SOUTH 200 EAST - VERNAL, UTAH 84078

(435) 789-1017

PDOP = 2.2

$$1'' = 1000'$$

DATE SURVEYED:	DATE DRAWN:
02-07-12	02-10-12

PARTY	DATE	DESCRIPTION	AMOUNT	CHECK NO.	BANK	INTEREST	TOTAL
1							

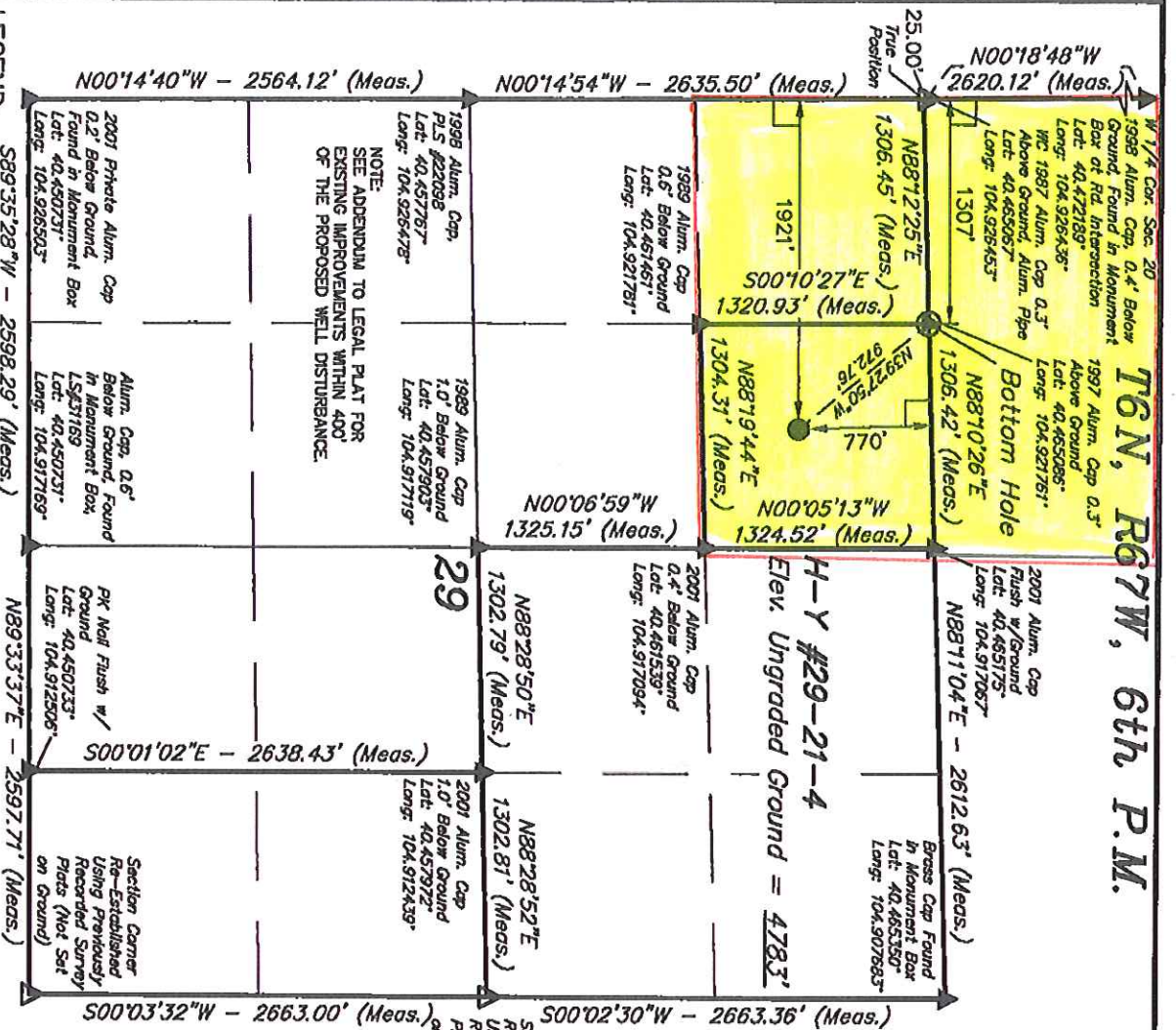
Silk

REFERENCES

WEATHER

COOL

GREAT WESTERN OIL & GAS COMPANY



LEGEND:
S89.35'28"W - 2598.29' (Meas.)

⊥ = 90° SYMBOL

● = PROPOSED WELL HEAD.

▲ = SECTION CORNERS LOCATED.

Δ = SECTION CORNERS

(Not Set on Ground.)

NAD 83 (TARGET BOTTOM HOLE)	NAD 83 (SURFACE LOCATION)
LATITUDE = 40°27'46.84" (40.463086)	LATITUDE = 40°27'46.84" (40.463011)
LONGITUDE = 104°55'18.54" (104.921761)	LONGITUDE = 104°55'18.41" (104.919356)
NAD 27 (TARGET BOTTOM HOLE)	NAD 27 (SURFACE LOCATION)
LATITUDE = 40°27'54.37" (40.465103)	LATITUDE = 40°27'46.50" (40.463028)
LONGITUDE = 104°55'16.33" (104.921231)	LONGITUDE = 104°55'08.59" (104.919078)