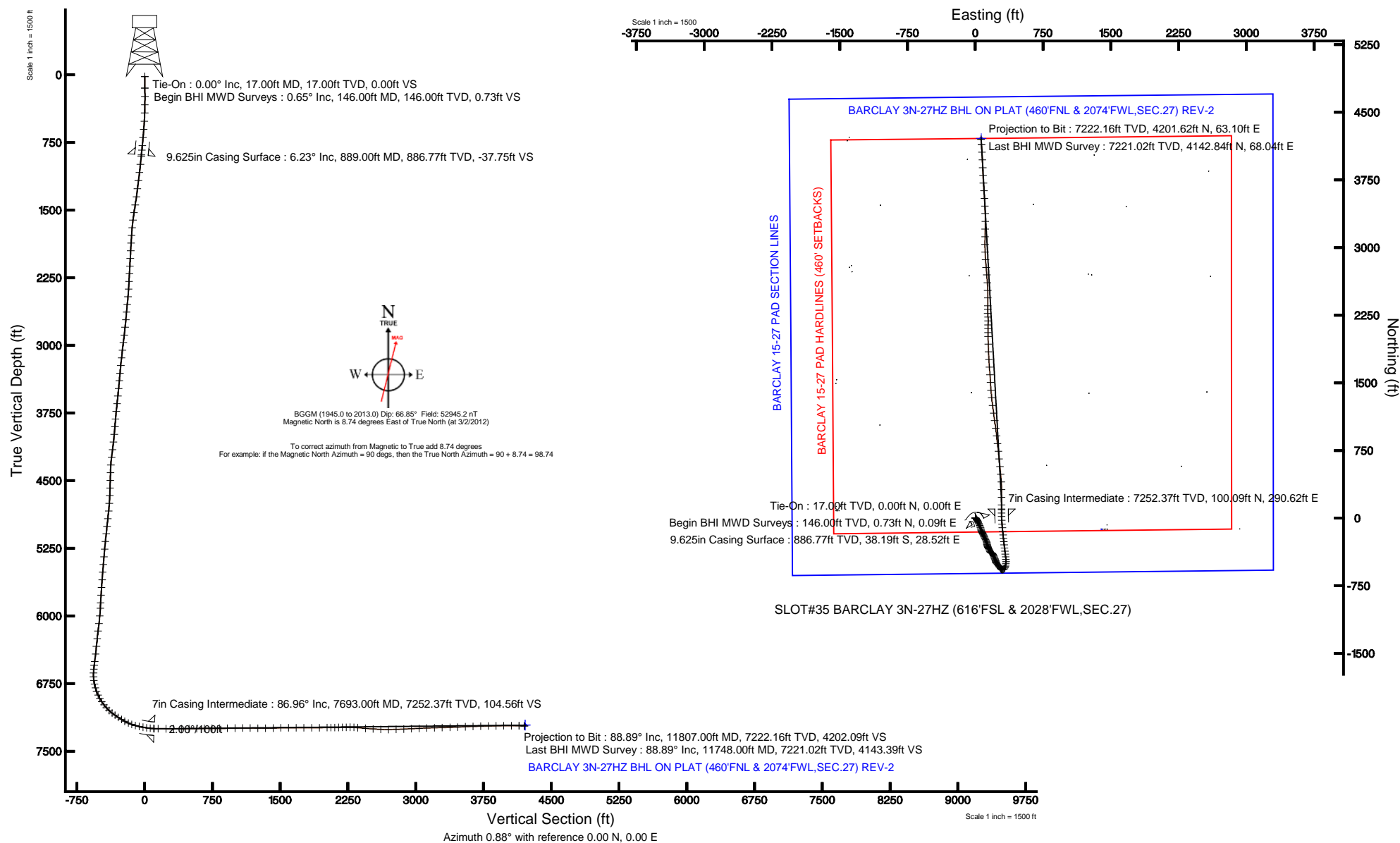


KERR-MCGEE OIL & GAS ONSHORE LP

Location: COLORADO Slot: SLOT#35 BARCLAY 3N-27HZ (616'FSL & 2028'FWL,SEC.27)
 Field: WELD COUNTY (KERR MCGEE) Well: BARCLAY 3N-27HZ
 Facility: SEC.27-T3N-R66W Wellbore: BARCLAY 3N-27HZ PWB

Plot reference wellpath is BARCLAY 3N-27HZ (REV-D.0) PWP	
True vertical depths are referenced to XTREME 8 (RKB)	Grid System: NAD83 / Lambert Colorado SP, Northern Zone (501), US feet
Measured depths are referenced to XTREME 8 (RKB)	North Reference: True north
XTREME 8 (RKB) to Mean Sea Level: 4976 feet	Scale: True distance
Mean Sea Level to Mud line (At Slot: SLOT#35 BARCLAY 3N-27HZ (616'FSL & 2028'FWL,SEC.27)): 0 feet	Depths are in feet
Coordinates are in feet referenced to Slot	Created by: wilsjef02 on 3/12/2012





Actual Wellpath Report

BARCLAY 3N-27HZ AWP

Page 1 of 6



REFERENCE WELLPATH IDENTIFICATION

Operator	KERR-MCGEE OIL & GAS ONSHORE LP	Slot	SLOT#35 BARCLAY 3N-27HZ (616'FSL & 2028'FWL,SEC.27)
Area	COLORADO	Well	BARCLAY 3N-27HZ
Field	WELD COUNTY (KERR MCGEE)	Wellbore	BARCLAY 3N-27HZ AWP
Facility	SEC.27-T3N-R66W		

REPORT SETUP INFORMATION

Projection System	NAD83 / Lambert Colorado SP, Northern Zone (501), US feet	Software System	WellArchitect® 3.0.2
North Reference	True	User	Wilsjef02
Scale	0.999957	Report Generated	3/12/2012 at 14:01:12
Convergence at slot	0.47° East	Database/Source file	WellArchitectDB\BARCLAY_3N-27HZ_AWP.xml

WELLPATH LOCATION

	Local coordinates		Grid coordinates		Geographic coordinates	
	North[ft]	East[ft]	Easting[US ft]	Northing[US ft]	Latitude	Longitude
Slot Location	-4224.42	1397.23	3205173.49	1313107.41	40°11'25.958"N	104°45'56.084"W
Facility Reference Pt			3203741.63	1317320.00	40°12'07.704"N	104°46'14.088"W
Field Reference Pt			3197771.84	1268891.29	40°04'09.600"N	104°47'36.000"W

WELLPATH DATUM

Calculation method	Minimum curvature	XTREME 8 (RKB) to Facility Vertical Datum	4976.00ft
Horizontal Reference Pt	Slot	XTREME 8 (RKB) to Mean Sea Level	4976.00ft
Vertical Reference Pt	XTREME 8 (RKB)	XTREME 8 (RKB) to Mud Line at Slot (SLOT#35 BARCLAY 3N-27HZ (616'FSL & 2028'FWL,SEC.27))	4976.00ft
MD Reference Pt	XTREME 8 (RKB)	Section Origin	N 0.00, E 0.00 ft
Field Vertical Reference	Mean Sea Level	Section Azimuth	0.88°



Actual Wellpath Report

BARCLAY 3N-27HZ AWP

Page 2 of 6



REFERENCE WELLPATH IDENTIFICATION

Operator	KERR-MCGEE OIL & GAS ONSHORE LP	Slot	SLOT#35 BARCLAY 3N-27HZ (616'FSL & 2028'FWL,SEC.27)
Area	COLORADO	Well	BARCLAY 3N-27HZ
Field	WELD COUNTY (KERR MCGEE)	Wellbore	BARCLAY 3N-27HZ AWP
Facility	SEC.27-T3N-R66W		

WELLPATH DATA (158 stations) † = interpolated/extrapolated station

MD [ft]	Inclination [°]	Azimuth [°]	TVD [ft]	Vert Sect [ft]	North [ft]	East [ft]	Latitude	Longitude	DLS [°/100ft]	Comments
0.00†	0.000	7.440	0.00	0.00	0.00	0.00	40°11'25.958"N	104°45'56.084"W	0.00	
17.00	0.000	7.440	17.00	0.00	0.00	0.00	40°11'25.958"N	104°45'56.084"W	0.00	Tie-On
146.00	0.650	7.440	146.00	0.73	0.73	0.09	40°11'25.965"N	104°45'56.083"W	0.50	Begin BHI MWD Surveys
239.00	0.580	87.880	238.99	1.28	1.27	0.63	40°11'25.971"N	104°45'56.076"W	0.86	
332.00	1.400	120.190	331.98	0.74	0.71	2.09	40°11'25.965"N	104°45'56.057"W	1.03	
422.00	2.900	133.930	421.91	-1.35	-1.42	4.68	40°11'25.944"N	104°45'56.024"W	1.75	
513.00	4.400	145.480	512.73	-5.76	-5.89	8.31	40°11'25.900"N	104°45'55.977"W	1.83	
605.00	5.410	144.310	604.39	-12.12	-12.32	12.84	40°11'25.836"N	104°45'55.919"W	1.10	
695.00	6.000	149.100	693.94	-19.53	-19.81	17.73	40°11'25.762"N	104°45'55.855"W	0.84	
786.00	6.480	150.390	784.40	-28.00	-28.35	22.71	40°11'25.678"N	104°45'55.791"W	0.55	
835.00	6.390	148.420	833.10	-32.68	-33.08	25.51	40°11'25.631"N	104°45'55.755"W	0.49	
903.00	6.190	151.150	900.69	-39.06	-39.51	29.26	40°11'25.568"N	104°45'55.707"W	0.53	
994.00	7.450	154.350	991.04	-48.60	-49.13	34.18	40°11'25.473"N	104°45'55.644"W	1.45	
1085.00	7.680	158.240	1081.25	-59.49	-60.09	38.99	40°11'25.364"N	104°45'55.582"W	0.62	
1176.00	8.250	156.180	1171.37	-71.03	-71.71	43.88	40°11'25.249"N	104°45'55.519"W	0.70	
1268.00	7.080	157.100	1262.55	-82.21	-82.98	48.75	40°11'25.138"N	104°45'55.456"W	1.28	
1359.00	8.090	160.790	1352.75	-93.36	-94.19	53.04	40°11'25.027"N	104°45'55.401"W	1.23	
1450.00	9.540	160.050	1442.67	-106.42	-107.33	57.72	40°11'24.897"N	104°45'55.340"W	1.60	
1535.00	8.970	165.080	1526.57	-119.38	-120.35	61.83	40°11'24.769"N	104°45'55.287"W	1.16	
1620.00	7.630	172.010	1610.68	-131.33	-132.34	64.32	40°11'24.650"N	104°45'55.255"W	1.96	
1705.00	5.200	164.770	1695.14	-140.61	-141.65	66.12	40°11'24.558"N	104°45'55.232"W	3.01	
1790.00	3.720	152.130	1779.88	-146.73	-147.80	68.42	40°11'24.497"N	104°45'55.202"W	2.08	
1876.00	3.870	149.330	1865.70	-151.65	-152.77	71.20	40°11'24.448"N	104°45'55.167"W	0.28	
1961.00	3.620	151.800	1950.51	-156.44	-157.60	73.93	40°11'24.401"N	104°45'55.131"W	0.35	
2046.00	3.600	150.040	2035.35	-161.07	-162.27	76.53	40°11'24.354"N	104°45'55.098"W	0.13	
2131.00	3.430	146.810	2120.19	-165.47	-166.71	79.26	40°11'24.311"N	104°45'55.063"W	0.31	
2217.00	4.010	153.370	2206.00	-170.27	-171.56	82.01	40°11'24.263"N	104°45'55.027"W	0.84	
2302.00	3.050	156.040	2290.84	-174.96	-176.28	84.27	40°11'24.216"N	104°45'54.998"W	1.15	
2387.00	4.220	157.050	2375.67	-179.87	-181.23	86.40	40°11'24.167"N	104°45'54.971"W	1.38	
2472.00	5.610	152.230	2460.36	-186.38	-187.78	89.56	40°11'24.102"N	104°45'54.930"W	1.70	
2557.00	6.220	157.880	2544.90	-194.26	-195.72	93.23	40°11'24.024"N	104°45'54.883"W	0.99	
2643.00	5.550	160.410	2630.45	-202.45	-203.96	96.38	40°11'23.942"N	104°45'54.842"W	0.84	
2728.00	5.880	153.280	2715.03	-210.16	-211.72	99.71	40°11'23.866"N	104°45'54.799"W	0.92	
2813.00	7.130	150.910	2799.48	-218.58	-220.22	104.24	40°11'23.782"N	104°45'54.741"W	1.50	
2899.00	7.490	153.110	2884.78	-228.17	-229.88	109.37	40°11'23.686"N	104°45'54.675"W	0.53	
2984.00	7.450	153.480	2969.06	-237.96	-239.75	114.33	40°11'23.589"N	104°45'54.611"W	0.07	
3069.00	7.520	155.980	3053.33	-247.90	-249.76	119.06	40°11'23.490"N	104°45'54.550"W	0.39	
3154.00	6.820	160.010	3137.67	-257.66	-259.59	123.05	40°11'23.393"N	104°45'54.499"W	1.01	
3240.00	5.450	163.770	3223.18	-266.33	-268.31	125.93	40°11'23.307"N	104°45'54.461"W	1.66	
3325.00	5.410	169.560	3307.79	-274.12	-276.12	127.79	40°11'23.229"N	104°45'54.437"W	0.65	
3410.00	5.270	175.980	3392.43	-281.94	-283.96	128.79	40°11'23.152"N	104°45'54.425"W	0.72	
3496.00	5.580	165.940	3478.04	-289.91	-291.96	130.08	40°11'23.073"N	104°45'54.408"W	1.16	
3581.00	6.650	162.660	3562.56	-298.58	-300.66	132.55	40°11'22.987"N	104°45'54.376"W	1.32	
3666.00	6.210	166.060	3647.02	-307.70	-309.82	135.12	40°11'22.896"N	104°45'54.343"W	0.68	
3752.00	5.580	164.790	3732.57	-316.21	-318.37	137.34	40°11'22.812"N	104°45'54.314"W	0.75	
3837.00	5.560	157.720	3817.17	-323.97	-326.17	139.99	40°11'22.735"N	104°45'54.280"W	0.81	
3923.00	5.480	149.180	3902.77	-331.29	-333.55	143.67	40°11'22.662"N	104°45'54.233"W	0.96	
4008.00	6.260	149.100	3987.32	-338.69	-341.01	148.13	40°11'22.588"N	104°45'54.175"W	0.92	
4093.00	7.230	151.400	4071.74	-347.28	-349.69	153.07	40°11'22.502"N	104°45'54.112"W	1.18	
4179.00	7.940	157.200	4156.98	-357.43	-359.91	157.96	40°11'22.401"N	104°45'54.049"W	1.21	
4264.00	7.630	157.070	4241.20	-367.97	-370.52	162.44	40°11'22.296"N	104°45'53.991"W	0.37	
4350.00	4.900	144.760	4326.68	-376.16	-378.78	166.78	40°11'22.215"N	104°45'53.935"W	3.52	
4435.00	3.260	117.350	4411.47	-380.17	-382.86	171.02	40°11'22.175"N	104°45'53.880"W	2.95	
4520.00	4.140	114.970	4496.29	-382.50	-385.26	175.95	40°11'22.151"N	104°45'53.817"W	1.05	
4606.00	3.930	119.500	4582.08	-385.18	-388.03	181.33	40°11'22.124"N	104°45'53.747"W	0.44	
4691.00	3.950	129.800	4666.88	-388.42	-391.33	186.12	40°11'22.091"N	104°45'53.686"W	0.83	
4777.00	5.170	141.360	4752.61	-393.27	-396.26	190.81	40°11'22.042"N	104°45'53.625"W	1.77	
4862.00	6.510	151.500	4837.17	-400.42	-403.48	195.50	40°11'21.971"N	104°45'53.565"W	1.98	
4948.00	6.930	155.690	4922.58	-409.36	-412.50	199.96	40°11'21.882"N	104°45'53.507"W	0.75	
5033.00	6.490	158.160	5007.00	-418.43	-421.63	203.86	40°11'21.791"N	104°45'53.457"W	0.62	



Actual Wellpath Report

BARCLAY 3N-27HZ AWP

Page 3 of 6



REFERENCE WELLPATH IDENTIFICATION

Operator	KERR-MCGEE OIL & GAS ONSHORE LP	Slot	SLOT#35 BARCLAY 3N-27HZ (616'FSL & 2028'FWL,SEC.27)
Area	COLORADO	Well	BARCLAY 3N-27HZ
Field	WELD COUNTY (KERR MCGEE)	Wellbore	BARCLAY 3N-27HZ AWP
Facility	SEC.27-T3N-R66W		

WELLPATH DATA (158 stations) † = interpolated/extrapolated station

MD [ft]	Inclination [°]	Azimuth [°]	TVD [ft]	Vert Sect [ft]	North [ft]	East [ft]	Latitude	Longitude	DLS [°/100ft]	Comments
5118.00	6.560	156.980	5091.44	-427.30	-430.56	207.55	40°11'21.703"N	104°45'53.410"W	0.18	
5204.00	6.470	157.490	5176.89	-436.24	-439.55	211.32	40°11'21.614"N	104°45'53.361"W	0.12	
5289.00	5.900	158.560	5261.39	-444.68	-448.04	214.75	40°11'21.530"N	104°45'53.317"W	0.68	
5374.00	4.870	160.230	5346.02	-452.09	-455.51	217.57	40°11'21.457"N	104°45'53.281"W	1.23	
5460.00	5.450	159.620	5431.67	-459.32	-462.77	220.23	40°11'21.385"N	104°45'53.246"W	0.68	
5545.00	4.830	161.870	5516.33	-466.46	-469.96	222.75	40°11'21.314"N	104°45'53.214"W	0.77	
5630.00	4.470	161.280	5601.05	-472.96	-476.49	224.92	40°11'21.249"N	104°45'53.186"W	0.43	
5715.00	3.990	165.170	5685.82	-478.93	-482.49	226.74	40°11'21.190"N	104°45'53.162"W	0.66	
5801.00	3.640	163.430	5771.63	-484.42	-488.00	228.29	40°11'21.136"N	104°45'53.142"W	0.43	
5886.00	3.260	163.570	5856.47	-489.30	-492.90	229.74	40°11'21.087"N	104°45'53.124"W	0.45	
5946.00	3.580	149.910	5916.36	-492.53	-496.16	231.16	40°11'21.055"N	104°45'53.105"W	1.45	
6032.00	7.040	137.970	6001.99	-498.70	-502.40	236.04	40°11'20.993"N	104°45'53.043"W	4.20	
6117.00	8.910	147.910	6086.16	-508.03	-511.85	243.03	40°11'20.900"N	104°45'52.953"W	2.73	
6202.00	7.330	148.100	6170.31	-518.12	-522.03	249.39	40°11'20.799"N	104°45'52.871"W	1.86	
6287.00	7.480	143.430	6254.60	-527.07	-531.07	255.55	40°11'20.710"N	104°45'52.791"W	0.73	
6373.00	8.420	136.140	6339.78	-535.98	-540.11	263.25	40°11'20.621"N	104°45'52.692"W	1.60	
6458.00	8.670	138.500	6423.83	-545.14	-549.40	271.81	40°11'20.529"N	104°45'52.582"W	0.51	
6543.00	8.780	144.940	6507.85	-555.12	-559.50	279.78	40°11'20.429"N	104°45'52.479"W	1.16	
6586.00	8.530	147.860	6550.36	-560.45	-564.89	283.36	40°11'20.376"N	104°45'52.433"W	1.18	
6628.00	9.460	127.160	6591.85	-565.11	-569.62	287.77	40°11'20.329"N	104°45'52.376"W	7.97	
6671.00	12.370	103.040	6634.09	-568.17	-572.79	295.08	40°11'20.298"N	104°45'52.282"W	12.45	
6714.00	12.870	81.670	6676.08	-568.37	-573.14	304.31	40°11'20.294"N	104°45'52.163"W	10.86	
6756.00	14.610	60.750	6716.90	-564.96	-569.87	313.56	40°11'20.327"N	104°45'52.044"W	12.45	
6799.00	15.990	40.540	6758.40	-557.67	-562.71	322.15	40°11'20.397"N	104°45'51.933"W	12.74	
6842.00	18.100	24.880	6799.53	-547.00	-552.15	328.82	40°11'20.502"N	104°45'51.847"W	11.70	
6884.00	19.960	14.160	6839.25	-534.06	-539.27	333.32	40°11'20.629"N	104°45'51.789"W	9.41	
6927.00	25.030	10.240	6878.97	-517.93	-523.19	336.73	40°11'20.788"N	104°45'51.745"W	12.29	
6970.00	28.790	4.410	6917.31	-498.61	-503.91	339.15	40°11'20.978"N	104°45'51.714"W	10.67	
7012.00	33.540	0.530	6953.24	-476.90	-482.20	340.03	40°11'21.193"N	104°45'51.703"W	12.27	
7055.00	36.910	354.430	6988.38	-452.18	-457.46	338.89	40°11'21.437"N	104°45'51.717"W	11.32	
7097.00	42.030	352.110	7020.79	-425.73	-430.96	335.73	40°11'21.699"N	104°45'51.758"W	12.68	
7140.00	47.290	353.210	7051.36	-395.82	-400.99	331.88	40°11'21.995"N	104°45'51.808"W	12.36	
7183.00	52.860	353.880	7078.95	-363.13	-368.24	328.19	40°11'22.319"N	104°45'51.855"W	13.01	
7225.00	55.670	353.200	7103.48	-329.32	-334.37	324.35	40°11'22.654"N	104°45'51.905"W	6.82	
7268.00	55.600	352.520	7127.75	-294.18	-299.15	319.94	40°11'23.002"N	104°45'51.962"W	1.32	
7311.00	59.260	353.060	7150.89	-258.30	-263.20	315.39	40°11'23.357"N	104°45'52.020"W	8.58	
7353.00	62.360	354.550	7171.38	-221.92	-226.76	311.44	40°11'23.717"N	104°45'52.071"W	8.00	
7396.00	66.140	354.510	7190.05	-183.44	-188.21	307.75	40°11'24.098"N	104°45'52.118"W	8.79	
7438.00	70.990	354.110	7205.40	-144.61	-149.32	303.87	40°11'24.482"N	104°45'52.168"W	11.58	
7481.00	75.170	354.120	7217.91	-103.77	-108.41	299.66	40°11'24.887"N	104°45'52.223"W	9.72	
7524.00	77.140	355.350	7228.20	-62.26	-66.84	295.83	40°11'25.298"N	104°45'52.272"W	5.36	
7566.00	79.890	356.570	7236.56	-21.26	-25.78	292.93	40°11'25.703"N	104°45'52.309"W	7.14	
7609.00	81.070	358.340	7243.67	21.07	16.58	291.05	40°11'26.122"N	104°45'52.334"W	4.90	
7647.00	83.820	359.980	7248.67	58.72	54.24	290.50	40°11'26.494"N	104°45'52.341"W	8.41	
7685.00†	86.417	0.264	7251.90	96.57	92.10	290.58	40°11'26.868"N	104°45'52.340"W	6.87	7" Casing Point
7737.00	89.970	0.650	7253.54	148.54	144.06	290.99	40°11'27.382"N	104°45'52.334"W	6.87	
7823.00	89.450	359.920	7253.98	234.53	230.06	291.42	40°11'28.231"N	104°45'52.329"W	1.04	
7908.00	90.380	359.860	7254.10	319.52	315.06	291.26	40°11'29.071"N	104°45'52.331"W	1.10	
7993.00	89.600	356.060	7254.12	404.39	399.99	288.23	40°11'29.911"N	104°45'52.370"W	4.56	
8079.00	90.800	354.610	7253.82	489.98	485.70	281.24	40°11'30.758"N	104°45'52.460"W	2.19	
8164.00	91.540	354.090	7252.08	574.41	570.27	272.87	40°11'31.593"N	104°45'52.568"W	1.06	
8250.00	91.040	354.400	7250.15	659.81	655.81	264.25	40°11'32.439"N	104°45'52.679"W	0.68	
8335.00	90.220	353.780	7249.21	744.21	740.36	255.50	40°11'33.274"N	104°45'52.792"W	1.21	
8420.00	89.690	353.540	7249.28	828.54	824.84	246.11	40°11'34.109"N	104°45'52.913"W	0.68	
8506.00	91.170	353.210	7248.63	913.79	910.26	236.19	40°11'34.953"N	104°45'53.040"W	1.76	
8591.00	91.480	352.760	7246.67	997.96	994.60	225.81	40°11'35.787"N	104°45'53.174"W	0.64	
8677.00	90.860	352.070	7244.91	1083.01	1079.83	214.46	40°11'36.629"N	104°45'53.320"W	1.08	
8762.00	87.690	352.430	7245.99	1167.03	1164.03	203.00	40°11'37.461"N	104°45'53.468"W	3.75	
8848.00	89.200	353.060	7248.32	1252.13	1249.31	192.15	40°11'38.304"N	104°45'53.608"W	1.90	
8933.00	90.640	353.630	7248.44	1336.39	1333.73	182.30	40°11'39.138"N	104°45'53.735"W	1.82	



Actual Wellpath Report

BARCLAY 3N-27HZ AWP

Page 4 of 6



REFERENCE WELLPATH IDENTIFICATION

Operator	KERR-MCGEE OIL & GAS ONSHORE LP	Slot	SLOT#35 BARCLAY 3N-27HZ (616'FSL & 2028'FWL,SEC.27)
Area	COLORADO	Well	BARCLAY 3N-27HZ
Field	WELD COUNTY (KERR MCGEE)	Wellbore	BARCLAY 3N-27HZ AWP
Facility	SEC.27-T3N-R66W		

WELLPATH DATA (158 stations)

MD [ft]	Inclination [°]	Azimuth [°]	TVD [ft]	Vert Sect [ft]	North [ft]	East [ft]	Latitude	Longitude	DLS [°/100ft]	Comments
9019.00	91.820	354.370	7246.59	1421.75	1419.24	173.31	40°11'39.983"N	104°45'53.851"W	1.62	
9104.00	92.200	358.170	7243.61	1506.40	1503.99	167.79	40°11'40.820"N	104°45'53.922"W	4.49	
9189.00	89.420	354.550	7242.41	1591.11	1588.79	162.39	40°11'41.658"N	104°45'53.991"W	5.37	
9275.00	90.150	356.040	7242.73	1676.69	1674.50	155.34	40°11'42.505"N	104°45'54.082"W	1.93	
9360.00	89.260	356.990	7243.17	1761.44	1759.34	150.17	40°11'43.344"N	104°45'54.149"W	1.53	
9446.00	90.650	358.300	7243.24	1847.30	1845.26	146.64	40°11'44.193"N	104°45'54.194"W	2.22	
9531.00	91.080	357.370	7241.95	1932.17	1930.19	143.42	40°11'45.032"N	104°45'54.236"W	1.21	
9616.00	89.970	359.420	7241.18	2017.08	2015.15	141.04	40°11'45.872"N	104°45'54.266"W	2.74	
9659.00	91.420	0.860	7240.65	2060.07	2058.14	141.15	40°11'46.297"N	104°45'54.265"W	4.75	
9702.00	90.590	0.540	7239.90	2103.07	2101.13	141.67	40°11'46.721"N	104°45'54.258"W	2.07	
9744.00	90.960	0.620	7239.33	2145.06	2143.12	142.10	40°11'47.136"N	104°45'54.253"W	0.90	
9787.00	91.870	0.550	7238.27	2188.05	2186.11	142.54	40°11'47.561"N	104°45'54.247"W	2.12	
9830.00	91.700	353.230	7236.93	2230.89	2228.99	140.21	40°11'47.985"N	104°45'54.277"W	17.02	
9872.00	89.110	359.780	7236.63	2272.74	2270.89	137.65	40°11'48.399"N	104°45'54.310"W	16.77	
9915.00	86.330	1.050	7238.34	2315.70	2313.85	137.96	40°11'48.823"N	104°45'54.306"W	7.11	
9957.00	84.510	1.170	7241.70	2357.57	2355.71	138.77	40°11'49.237"N	104°45'54.296"W	4.34	
10043.00	85.350	359.680	7249.30	2443.22	2441.36	139.41	40°11'50.084"N	104°45'54.287"W	1.98	
10128.00	85.780	357.850	7255.87	2527.91	2526.09	137.58	40°11'50.921"N	104°45'54.311"W	2.21	
10213.00	87.230	356.220	7261.05	2612.55	2610.81	133.19	40°11'51.758"N	104°45'54.368"W	2.56	
10299.00	90.650	355.670	7262.64	2698.21	2696.57	127.11	40°11'52.605"N	104°45'54.446"W	4.03	
10384.00	92.250	354.830	7260.49	2782.76	2781.24	120.07	40°11'53.442"N	104°45'54.537"W	2.13	
10469.00	92.980	356.490	7256.61	2867.32	2865.91	113.65	40°11'54.279"N	104°45'54.619"W	2.13	
10554.00	92.120	357.400	7252.83	2952.03	2950.70	109.12	40°11'55.117"N	104°45'54.678"W	1.47	
10640.00	92.340	359.950	7249.48	3037.90	3036.61	107.14	40°11'55.966"N	104°45'54.703"W	2.97	
10725.00	92.500	1.470	7245.89	3122.82	3121.52	108.19	40°11'56.805"N	104°45'54.690"W	1.80	
10810.00	92.030	0.830	7242.54	3207.75	3206.44	109.89	40°11'57.644"N	104°45'54.668"W	0.93	
10895.00	91.260	0.380	7240.10	3292.71	3291.40	110.79	40°11'58.484"N	104°45'54.656"W	1.05	
10981.00	92.000	358.570	7237.65	3378.65	3377.35	110.00	40°11'59.333"N	104°45'54.666"W	2.27	
11066.00	92.060	357.360	7234.64	3463.48	3462.24	106.99	40°12'00.172"N	104°45'54.705"W	1.42	
11151.00	92.340	355.920	7231.37	3548.19	3547.03	102.01	40°12'01.010"N	104°45'54.769"W	1.72	
11236.00	91.910	355.560	7228.22	3632.78	3631.74	95.70	40°12'01.847"N	104°45'54.851"W	0.66	
11322.00	91.540	356.670	7225.63	3718.45	3717.50	89.88	40°12'02.694"N	104°45'54.926"W	1.36	
11407.00	91.750	357.430	7223.19	3803.22	3802.35	85.50	40°12'03.533"N	104°45'54.982"W	0.93	
11492.00	90.830	357.970	7221.28	3888.07	3887.26	82.09	40°12'04.372"N	104°45'55.026"W	1.25	
11578.00	90.430	357.580	7220.33	3973.93	3973.19	78.75	40°12'05.221"N	104°45'55.069"W	0.65	
11663.00	89.880	356.380	7220.10	4058.74	4058.07	74.28	40°12'06.060"N	104°45'55.127"W	1.55	
11748.00	88.890	355.200	7221.02	4143.39	4142.84	68.04	40°12'06.897"N	104°45'55.207"W	1.81	Last BHI MWD Survey
11807.00	88.890	355.200	7222.16	4202.09	4201.62	63.10	40°12'07.478"N	104°45'55.271"W	0.00	Projection to Bit

HOLE & CASING SECTIONS - Ref Wellbore: BARCLAY 3N-27HZ AWP Ref Wellpath: BARCLAY 3N-27HZ AWP

String/Diameter	Start MD [ft]	End MD [ft]	Interval [ft]	Start TVD [ft]	End TVD [ft]	Start N/S [ft]	Start E/W [ft]	End N/S [ft]	End E/W [ft]
13.5in Open Hole	17.00	889.00	872.00	17.00	886.77	0.00	0.00	-38.19	28.52
9.625in Casing Surface	17.00	889.00	872.00	17.00	886.77	0.00	0.00	-38.19	28.52
8.75in Open Hole	889.00	7693.00	6804.00	886.77	7252.37	-38.19	28.52	100.09	290.62
7in Casing Intermediate	17.00	7693.00	7676.00	17.00	7252.37	0.00	0.00	100.09	290.62
6.125in Open Hole	7693.00	11807.00	4114.00	7252.37	7222.16	100.09	290.62	4201.62	63.10



Actual Wellpath Report

BARCLAY 3N-27HZ AWP

Page 5 of 6



REFERENCE WELLPATH IDENTIFICATION

Operator	KERR-MCGEE OIL & GAS ONSHORE LP	Slot	SLOT#35 BARCLAY 3N-27HZ (616'FSL & 2028'FWL,SEC.27)
Area	COLORADO	Well	BARCLAY 3N-27HZ
Field	WELD COUNTY (KERR MCGEE)	Wellbore	BARCLAY 3N-27HZ AWP
Facility	SEC.27-T3N-R66W		

TARGETS

Name	MD [ft]	TVD [ft]	North [ft]	East [ft]	Grid East [US ft]	Grid North [US ft]	Latitude	Longitude	Shape
BARCLAY 15-27 PAD SECTION LINES		2.00	-122.69	1396.33	3206570.73	1312996.29	40°11'24.745"N	104°45'38.092"W	polygon
BARCLAY 3N-27HZ BHL ON PLAT (460'FNL & 2074'FWL,SEC.27) REV-1		7213.00	4211.00	15.05	3205153.67	1317318.19	40°12'07.571"N	104°45'55.890"W	point
BARCLAY 3N-27HZ BHL ON PLAT (460'FNL & 2074'FWL,SEC.27) REV-2		7213.00	4211.00	65.00	3205203.61	1317318.61	40°12'07.571"N	104°45'55.246"W	point
BARCLAY 15-27 PAD HARDLINES (460' SETBACKS)		7424.00	-122.69	1396.33	3206570.73	1312996.29	40°11'24.745"N	104°45'38.092"W	polygon

WELLPATH COMPOSITION - Ref Wellbore: BARCLAY 3N-27HZ AWP Ref Wellpath: BARCLAY 3N-27HZ AWP

Start MD [ft]	End MD [ft]	Positional Uncertainty Model	Log Name/Comment	Wellbore
17.00	835.00	NaviTrak (Standard)	BHI MWD SURVEYS 13 1/2" HOLE <146-835>	BARCLAY 3N-27HZ AWP
835.00	7647.00	NaviTrak (Standard)	BHI MWD SURVEYS 8 3/4" HOLE <903-7647>	BARCLAY 3N-27HZ AWP
7647.00	11748.00	OnTrak (Standard)	BHI MWD SURVEYS 6 1/8" HOLE <7737-11748>	BARCLAY 3N-27HZ AWP
11748.00	11807.00	Blind Drilling (std)	Projection to bit	BARCLAY 3N-27HZ AWP



Actual Wellpath Report

BARCLAY 3N-27HZ AWP

Page 6 of 6



REFERENCE WELLPATH IDENTIFICATION

Operator	KERR-MCGEE OIL & GAS ONSHORE LP	Slot	SLOT#35 BARCLAY 3N-27HZ (616'FSL & 2028'FWL,SEC.27)
Area	COLORADO	Well	BARCLAY 3N-27HZ
Field	WELD COUNTY (KERR MCGEE)	Wellbore	BARCLAY 3N-27HZ AWP
Facility	SEC.27-T3N-R66W		

WELLPATH COMMENTS

MD [ft]	Inclination [°]	Azimuth [°]	TVD [ft]	Comment
17.00	0.000	7.440	17.00	Tie-On
146.00	0.650	7.440	146.00	Begin BHI MWD Surveys
7685.00	86.417	0.264	7251.90	7" Casing Point
11748.00	88.890	355.200	7221.02	Last BHI MWD Survey
11807.00	88.890	355.200	7222.16	Projection to Bit