

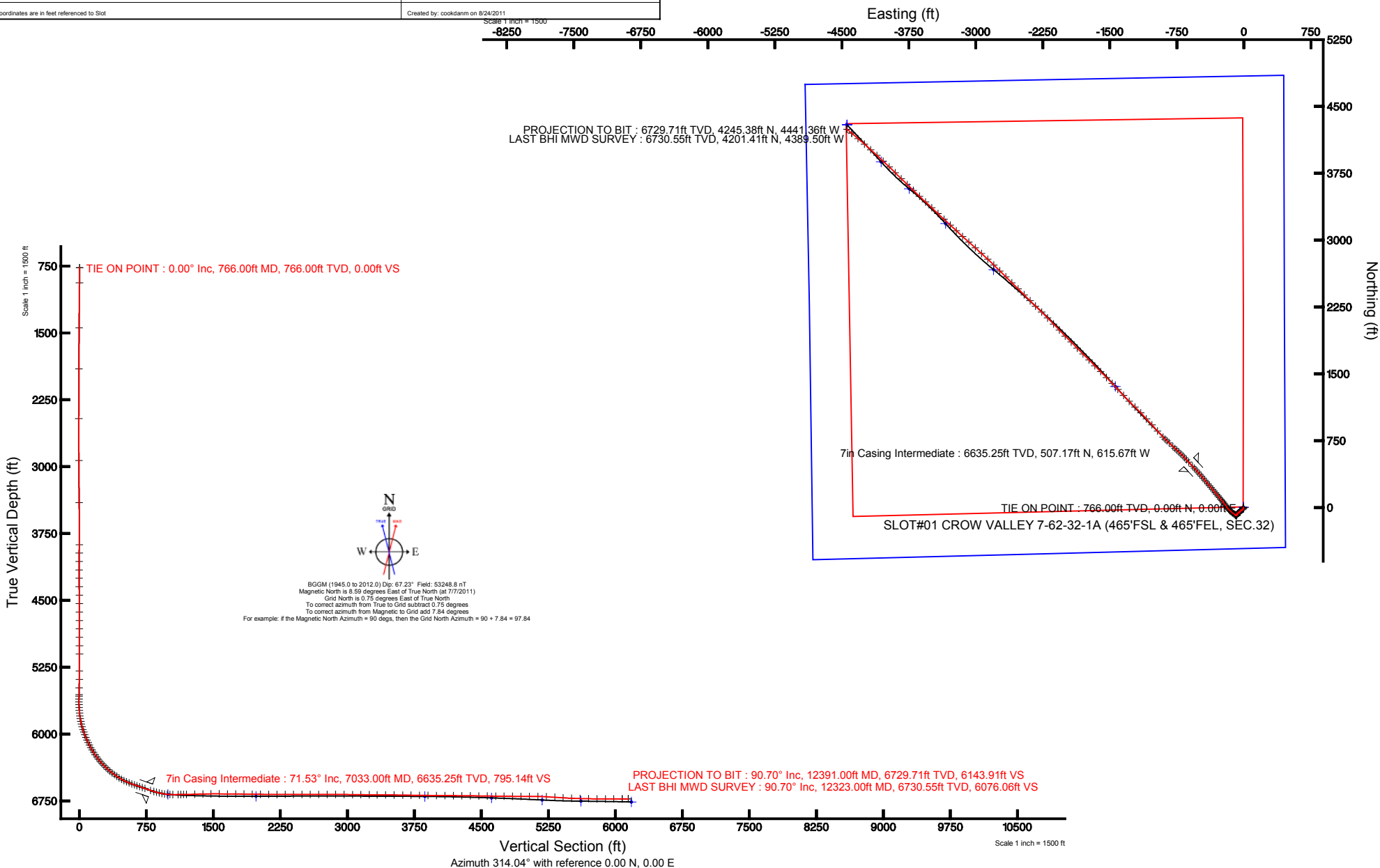
MARATHON OIL COMPANY

Location: COLORADO Slot: SLOT#01 CROW VALLEY 7-62-32-1A (465'FSL & 465'FEL, SEC.32)
Field: WELD COUNTY (NAD 83, GRID NORTH) Well: CROW VALLEY 7-62-32-1A
Facility: SEC.32-17N-R62W Wellbore: CROW VALLEY 7-62-32-1A PWB



Plot reference wellpath is CROW VALLEY 7-62-32-1A (REV-D.1) PWB	
True vertical depths are referenced to Rig on SLOT#01 CROW VALLEY 7-62-32-1A (465'FSL & 465'FEL, SEC.32) (RKB)	Grid System: NAD83 / Lambert Colorado SP, Northern Zone (501), US feet
Measured depths are referenced to Rig on SLOT#01 CROW VALLEY 7-62-32-1A (465'FSL & 465'FEL, SEC.32) (RKB)	North Reference: Grid north
Rig on SLOT#01 CROW VALLEY 7-62-32-1A (465'FSL & 465'FEL, SEC.32) to Mean Sea Level: 4945 feet	Scale: True distance
Mean Sea Level to Mud line (At Slot: SLOT#01 CROW VALLEY 7-62-32-1A (465'FSL & 465'FEL, SEC.32)): 0 feet	Depths are in feet
Coordinates are in feet referenced to Slot	Created by: cookdann on 8/24/2011

Scale 1 inch = 1500





Actual Wellpath Report

CROW VALLEY 7-62-32-1A AWP

Page 1 of 6



REFERENCE WELLPATH IDENTIFICATION

Operator	MARATHON OIL COMPANY	Slot	SLOT#01 CROW VALLEY 7-62-32-1A (465°FSL & 465°FEL, SEC.32)
Area	COLORADO	Well	CROW VALLEY 7-62-32-1A
Field	WELD COUNTY (NAD 83, GRID NORTH)	Wellbore	CROW VALLEY 7-62-32-1A AWB
Facility	SEC.32-T7N-R62W		

REPORT SETUP INFORMATION

Projection System	NAD83 / Lambert Colorado SP, Northern Zone (501), US feet	Software System	WellArchitect® 3.0.1
North Reference	Grid	User	Cookdanm
Scale	0.999968	Report Generated	8/24/2011 at 1:42:30 PM
Convergence at slot	0.75° East	Database/Source file	WA_Denver/CROW_VALLEY_7-62-32-1A_AWB.xml

WELLPATH LOCATION

	Local coordinates		Grid coordinates		Geographic coordinates	
	North[ft]	East[ft]	Easting[US ft]	Northing[US ft]	Latitude	Longitude
Slot Location	0.00	0.00	3322840.94	1436006.34	40°31'27.965"N	104°20'19.194"W
Facility Reference Pt			3322840.94	1436006.34	40°31'27.965"N	104°20'19.194"W
Field Reference Pt			3476081.76	1512960.14	40°43'43.704"N	103°46'55.829"W

WELLPATH DATUM

Calculation method	Minimum curvature	Rig on SLOT#01 CROW VALLEY 7-62-32-1A (465°FSL & 465°FEL, SEC.32) (RKB) to Facility Vertical Datum
Horizontal Reference Pt	Slot	Rig on SLOT#01 CROW VALLEY 7-62-32-1A (465°FSL & 465°FEL, SEC.32) (RKB) to Mean Sea Level
Vertical Reference Pt	Rig on SLOT#01 CROW VALLEY 7-62-32-1A (465°FSL & 465°FEL, SEC.32) (RKB)	Rig on SLOT#01 CROW VALLEY 7-62-32-1A (465°FSL & 465°FEL, SEC.32) (RKB) to Mud Line at Slot (SLOT#01 CI
MD Reference Pt	Rig on SLOT#01 CROW VALLEY 7-62-32-1A (465°FSL & 465°FEL, SEC.32) (RKB)	Section Origin
Field Vertical Reference	Mean Sea Level	Section Azimuth



Actual Wellpath Report

CROW VALLEY 7-62-32-1A AWP

Page 2 of 6



REFERENCE WELLPATH IDENTIFICATION

Operator	MARATHON OIL COMPANY	Slot	SLOT#01 CROW VALLEY 7-62-32-1A (465°FSL & 465°FEL, SEC.32)
Area	COLORADO	Well	CROW VALLEY 7-62-32-1A
Field	WELD COUNTY (NAD 83, GRID NORTH)	Wellbore	CROW VALLEY 7-62-32-1A AWB
Facility	SEC.32-T7N-R62W		

WELLPATH DATA (135 stations)

MD [ft]	Inclination [°]	Azimuth [°]	TVD [ft]	Vert Sect [ft]	North [ft]	East [ft]	Latitude	Longitude	DLS [°/100ft]	Comments
766.00	0.000	178.200	766.00	0.00	0.00	0.00	40°31'27.965"N	104°20'19.194"W	0.00	TIE ON POINT
937.00	0.600	178.200	937.00	-0.64	-0.89	0.03	40°31'27.956"N	104°20'19.193"W	0.35	
1441.00	0.800	187.600	1440.96	-4.63	-7.02	-0.35	40°31'27.896"N	104°20'19.199"W	0.05	
1902.00	0.800	215.000	1901.92	-7.04	-12.85	-2.63	40°31'27.839"N	104°20'19.230"W	0.08	
2461.00	1.200	216.400	2460.83	-8.43	-20.75	-8.34	40°31'27.761"N	104°20'19.305"W	0.07	
2932.00	1.500	234.300	2931.70	-7.99	-28.32	-16.27	40°31'27.688"N	104°20'19.409"W	0.11	
3405.00	1.600	248.800	3404.53	-4.12	-34.32	-27.45	40°31'27.630"N	104°20'19.555"W	0.09	
3878.00	2.700	215.800	3877.21	-2.95	-45.75	-40.13	40°31'27.519"N	104°20'19.721"W	0.34	
3972.00	2.100	214.900	3971.12	-3.54	-48.95	-42.41	40°31'27.487"N	104°20'19.751"W	0.64	
4067.00	1.900	221.600	4066.06	-3.89	-51.56	-44.45	40°31'27.462"N	104°20'19.778"W	0.32	
4161.00	2.000	220.900	4160.01	-4.04	-53.97	-46.56	40°31'27.438"N	104°20'19.806"W	0.11	
4255.00	2.100	230.800	4253.95	-3.93	-56.29	-48.97	40°31'27.415"N	104°20'19.837"W	0.39	
4350.00	2.000	233.400	4348.89	-3.46	-58.38	-51.65	40°31'27.395"N	104°20'19.872"W	0.14	
4445.00	1.900	236.900	4443.83	-2.84	-60.23	-54.30	40°31'27.377"N	104°20'19.907"W	0.16	
4540.00	1.900	232.100	4538.78	-2.27	-62.06	-56.86	40°31'27.360"N	104°20'19.940"W	0.17	
4634.00	1.800	235.000	4632.73	-1.77	-63.86	-59.30	40°31'27.342"N	104°20'19.972"W	0.15	
4729.00	1.600	228.000	4727.69	-1.39	-65.61	-61.51	40°31'27.325"N	104°20'20.001"W	0.30	
4823.00	2.200	222.200	4821.64	-1.36	-67.82	-63.69	40°31'27.303"N	104°20'20.030"W	0.67	
4918.00	2.300	225.600	4916.57	-1.37	-70.50	-66.28	40°31'27.277"N	104°20'20.064"W	0.18	
5012.00	2.200	228.200	5010.49	-1.18	-73.03	-68.97	40°31'27.253"N	104°20'20.099"W	0.15	
5106.00	2.600	223.400	5104.41	-1.08	-75.78	-71.78	40°31'27.226"N	104°20'20.136"W	0.48	
5296.00	1.900	211.700	5294.27	-1.80	-81.59	-76.40	40°31'27.169"N	104°20'20.197"W	0.44	
5391.00	1.900	202.700	5389.21	-2.71	-84.38	-77.83	40°31'27.142"N	104°20'20.216"W	0.31	
5485.00	2.300	198.100	5483.15	-4.10	-87.61	-79.02	40°31'27.110"N	104°20'20.232"W	0.46	
5560.00	1.900	195.900	5558.10	-5.34	-90.24	-79.83	40°31'27.084"N	104°20'20.242"W	0.54	
5580.00	2.100	196.900	5578.09	-5.67	-90.91	-80.03	40°31'27.077"N	104°20'20.245"W	1.02	
5612.00	2.000	202.600	5610.07	-6.14	-91.98	-80.41	40°31'27.067"N	104°20'20.250"W	0.71	
5643.00	1.500	225.500	5641.05	-6.33	-92.77	-80.91	40°31'27.059"N	104°20'20.257"W	2.74	
5675.00	1.800	268.800	5673.04	-5.96	-93.07	-81.71	40°31'27.056"N	104°20'20.267"W	3.90	
5706.00	2.800	291.300	5704.02	-4.92	-92.81	-82.90	40°31'27.059"N	104°20'20.283"W	4.29	
5738.00	4.200	298.700	5735.96	-3.07	-91.96	-84.66	40°31'27.068"N	104°20'20.305"W	4.59	
5769.00	5.900	302.800	5766.83	-0.41	-90.55	-86.99	40°31'27.082"N	104°20'20.335"W	5.60	
5801.00	7.900	304.400	5798.60	3.37	-88.42	-90.19	40°31'27.103"N	104°20'20.376"W	6.28	
5832.00	9.700	305.600	5829.23	8.05	-85.70	-94.07	40°31'27.131"N	104°20'20.426"W	5.84	
5864.00	11.600	306.700	5860.68	13.91	-82.20	-98.85	40°31'27.166"N	104°20'20.487"W	5.97	
5895.00	13.800	307.400	5890.92	20.68	-78.09	-104.28	40°31'27.207"N	104°20'20.557"W	7.11	
5926.00	15.500	307.700	5920.91	28.47	-73.32	-110.50	40°31'27.255"N	104°20'20.637"W	5.49	
5958.00	17.400	307.600	5951.60	37.47	-67.78	-117.67	40°31'27.311"N	104°20'20.729"W	5.94	
5989.00	19.400	308.700	5981.02	47.20	-61.73	-125.36	40°31'27.372"N	104°20'20.827"W	6.55	
6021.00	21.300	309.700	6011.02	58.29	-54.70	-133.98	40°31'27.442"N	104°20'20.938"W	6.04	
6052.00	22.800	310.400	6039.75	69.90	-47.21	-142.89	40°31'27.517"N	104°20'21.052"W	4.91	
6084.00	24.400	312.400	6069.07	82.70	-38.73	-152.49	40°31'27.602"N	104°20'21.175"W	5.59	
6116.00	25.700	315.200	6098.06	96.24	-29.35	-162.26	40°31'27.696"N	104°20'21.300"W	5.50	
6147.00	27.300	318.600	6125.81	110.05	-19.25	-171.70	40°31'27.797"N	104°20'21.420"W	7.11	
6179.00	28.900	321.900	6154.03	125.03	-7.66	-181.33	40°31'27.913"N	104°20'21.543"W	6.97	



Actual Wellpath Report

CROW VALLEY 7-62-32-1A AWP

Page 3 of 6



REFERENCE WELLPATH IDENTIFICATION

Operator	MARATHON OIL COMPANY	Slot	SLOT#01 CROW VALLEY 7-62-32-1A (465°FSL & 465°FEL, SEC.32)
Area	COLORADO	Well	CROW VALLEY 7-62-32-1A
Field	WELD COUNTY (NAD 83, GRID NORTH)	Wellbore	CROW VALLEY 7-62-32-1A AWB
Facility	SEC.32-T7N-R62W		

WELLPATH DATA (135 stations)

MD [ft]	Inclination [°]	Azimuth [°]	TVD [ft]	Vert Sect [ft]	North [ft]	East [ft]	Latitude	Longitude	DLS [°/100ft]	Comments
6210.00	30.800	323.700	6180.92	140.27	4.64	-190.65	40°31'28.036"N	104°20'21.661"W	6.78	
6242.00	32.600	324.200	6208.15	156.84	18.23	-200.54	40°31'28.171"N	104°20'21.787"W	5.68	
6273.00	34.300	324.000	6234.01	173.66	32.07	-210.56	40°31'28.309"N	104°20'21.915"W	5.50	
6305.00	35.900	322.900	6260.19	191.81	46.85	-221.52	40°31'28.457"N	104°20'22.054"W	5.38	
6336.00	37.900	321.600	6284.98	210.23	61.56	-232.92	40°31'28.604"N	104°20'22.199"W	6.93	
6368.00	40.200	321.100	6309.83	230.23	77.31	-245.51	40°31'28.761"N	104°20'22.359"W	7.25	
6399.00	42.500	320.100	6333.10	250.57	93.13	-258.52	40°31'28.919"N	104°20'22.525"W	7.72	
6431.00	44.000	319.900	6356.41	272.38	109.92	-272.61	40°31'29.087"N	104°20'22.705"W	4.71	
6462.00	46.300	320.400	6378.27	294.23	126.80	-286.69	40°31'29.255"N	104°20'22.884"W	7.51	
6494.00	48.200	320.100	6399.99	317.59	144.86	-301.71	40°31'29.436"N	104°20'23.076"W	5.98	
6525.00	50.400	320.800	6420.20	340.94	162.98	-316.68	40°31'29.617"N	104°20'23.266"W	7.30	
6557.00	52.400	320.300	6440.17	365.79	182.29	-332.57	40°31'29.809"N	104°20'23.469"W	6.37	
6588.00	54.400	320.200	6458.65	390.53	201.43	-348.48	40°31'30.001"N	104°20'23.672"W	6.46	
6620.00	56.500	320.100	6476.79	416.74	221.66	-365.37	40°31'30.203"N	104°20'23.887"W	6.57	
6652.00	58.700	320.200	6493.94	443.60	242.40	-382.68	40°31'30.410"N	104°20'24.107"W	6.88	
6683.00	60.700	320.100	6509.58	470.21	262.95	-399.83	40°31'30.615"N	104°20'24.326"W	6.46	
6715.00	62.800	320.300	6524.73	498.24	284.60	-417.87	40°31'30.831"N	104°20'24.556"W	6.59	
6746.00	65.000	320.200	6538.36	525.91	306.01	-435.67	40°31'31.045"N	104°20'24.783"W	7.10	
6778.00	67.100	319.800	6551.35	554.99	328.41	-454.47	40°31'31.269"N	104°20'25.022"W	6.66	
6809.00	69.300	319.600	6562.86	583.64	350.36	-473.09	40°31'31.488"N	104°20'25.260"W	7.12	
6841.00	71.400	318.500	6573.62	613.65	373.12	-492.84	40°31'31.716"N	104°20'25.512"W	7.32	
6872.00	72.300	318.300	6583.28	643.03	395.14	-512.40	40°31'31.936"N	104°20'25.761"W	2.97	
6904.00	71.600	318.100	6593.20	673.37	417.82	-532.67	40°31'32.163"N	104°20'26.020"W	2.27	
6935.00	70.500	317.500	6603.26	702.63	439.54	-552.37	40°31'32.380"N	104°20'26.271"W	3.99	
6966.00	70.700	316.700	6613.56	731.83	460.96	-572.27	40°31'32.594"N	104°20'26.525"W	2.52	
7071.00	72.000	317.000	6647.14	831.19	533.54	-640.31	40°31'33.320"N	104°20'27.394"W	1.27	
7102.00	74.400	317.500	6656.10	860.82	555.34	-660.45	40°31'33.538"N	104°20'27.651"W	7.89	
7133.00	76.700	315.700	6663.83	890.80	577.14	-681.08	40°31'33.756"N	104°20'27.915"W	9.31	
7164.00	78.700	314.600	6670.44	921.08	598.61	-702.44	40°31'33.971"N	104°20'28.188"W	7.32	
7195.00	81.800	313.600	6675.68	951.63	619.87	-724.38	40°31'34.184"N	104°20'28.468"W	10.49	
7226.00	84.700	312.900	6679.33	982.41	640.96	-746.80	40°31'34.395"N	104°20'28.755"W	9.62	
7256.00	87.600	312.000	6681.34	1012.33	661.16	-768.88	40°31'34.597"N	104°20'29.037"W	10.12	
7287.00	90.000	313.200	6681.99	1043.31	682.14	-791.69	40°31'34.808"N	104°20'29.329"W	8.66	
7348.00	90.200	313.800	6681.89	1104.31	724.13	-835.94	40°31'35.228"N	104°20'29.895"W	1.04	
7379.00	90.400	313.800	6681.72	1135.31	745.59	-858.32	40°31'35.443"N	104°20'30.181"W	0.65	
7409.00	90.600	313.700	6681.46	1165.30	766.33	-879.99	40°31'35.651"N	104°20'30.458"W	0.75	
7440.00	90.900	316.100	6681.06	1196.30	788.21	-901.94	40°31'35.870"N	104°20'30.739"W	7.80	
7533.00	92.200	319.400	6678.54	1289.05	857.01	-964.44	40°31'36.558"N	104°20'31.536"W	3.81	
7625.00	91.100	316.200	6675.89	1380.80	925.13	-1026.20	40°31'37.239"N	104°20'32.325"W	3.68	
7717.00	90.800	318.100	6674.36	1472.65	992.56	-1088.76	40°31'37.913"N	104°20'33.123"W	2.09	
7809.00	89.300	316.200	6674.28	1564.51	1060.01	-1151.32	40°31'38.588"N	104°20'33.922"W	2.63	
7901.00	89.700	313.700	6675.09	1656.48	1125.00	-1216.42	40°31'39.238"N	104°20'34.754"W	2.75	
7994.00	89.400	315.500	6675.82	1749.47	1190.29	-1282.64	40°31'39.892"N	104°20'35.600"W	1.96	
8085.00	89.100	316.900	6677.01	1840.40	1255.96	-1345.62	40°31'40.549"N	104°20'36.405"W	1.57	
8178.00	89.600	317.900	6678.06	1933.23	1324.42	-1408.56	40°31'41.233"N	104°20'37.208"W	1.20	



Actual Wellpath Report

CROW VALLEY 7-62-32-1A AWP

Page 4 of 6



REFERENCE WELLPATH IDENTIFICATION

Operator	MARATHON OIL COMPANY	Slot	SLOT#01 CROW VALLEY 7-62-32-1A (465°FSL & 465°FEL, SEC.32)
Area	COLORADO	Well	CROW VALLEY 7-62-32-1A
Field	WELD COUNTY (NAD 83, GRID NORTH)	Wellbore	CROW VALLEY 7-62-32-1A AWB
Facility	SEC.32-T7N-R62W		

WELLPATH DATA (135 stations)

MD [ft]	Inclination [°]	Azimuth [°]	TVD [ft]	Vert Sect [ft]	North [ft]	East [ft]	Latitude	Longitude	DLS [°/100ft]	Comments
8271.00	89.000	315.100	6679.20	2026.13	1391.86	-1472.57	40°31'41.908"N	104°20'38.026"W	3.08	
8363.00	88.700	316.100	6681.05	2118.08	1457.58	-1536.92	40°31'42.565"N	104°20'38.848"W	1.13	
8456.00	90.600	314.900	6681.61	2211.04	1523.91	-1602.10	40°31'43.229"N	104°20'39.681"W	2.42	
8548.00	90.100	315.700	6681.05	2303.01	1589.30	-1666.81	40°31'43.884"N	104°20'40.507"W	1.03	
8640.00	90.000	315.000	6680.97	2394.99	1654.75	-1731.46	40°31'44.539"N	104°20'41.334"W	0.77	
8735.00	89.900	314.700	6681.05	2489.98	1721.75	-1798.82	40°31'45.209"N	104°20'42.194"W	0.33	
8829.00	90.000	315.400	6681.14	2583.96	1788.27	-1865.23	40°31'45.875"N	104°20'43.043"W	0.75	
8924.00	90.500	315.400	6680.72	2678.93	1855.92	-1931.93	40°31'46.552"N	104°20'43.896"W	0.53	
9018.00	90.600	315.000	6679.82	2772.91	1922.61	-1998.16	40°31'47.220"N	104°20'44.742"W	0.44	
9113.00	89.300	316.800	6679.90	2867.85	1990.83	-2064.27	40°31'47.902"N	104°20'45.587"W	2.34	
9207.00	89.000	315.300	6681.30	2961.78	2058.49	-2129.50	40°31'48.579"N	104°20'46.420"W	1.63	
9302.00	89.500	315.800	6682.54	3056.74	2126.31	-2196.02	40°31'49.258"N	104°20'47.270"W	0.74	
9396.00	89.000	314.400	6683.77	3150.72	2192.88	-2262.36	40°31'49.924"N	104°20'48.118"W	1.58	
9491.00	89.900	313.400	6684.68	3245.71	2258.75	-2330.81	40°31'50.584"N	104°20'48.993"W	1.42	
9577.00	89.400	315.500	6685.21	3331.70	2318.97	-2392.20	40°31'51.187"N	104°20'49.778"W	2.51	
9672.00	89.600	314.700	6686.04	3426.68	2386.26	-2459.25	40°31'51.860"N	104°20'50.635"W	0.87	
9767.00	89.400	314.900	6686.87	3521.67	2453.20	-2526.66	40°31'52.530"N	104°20'51.496"W	0.30	
9864.00	89.200	313.700	6688.05	3618.66	2520.94	-2596.08	40°31'53.208"N	104°20'52.384"W	1.25	
9958.00	89.100	315.900	6689.45	3712.63	2587.16	-2662.76	40°31'53.871"N	104°20'53.236"W	2.34	
10053.00	89.500	314.100	6690.61	3807.61	2654.33	-2729.93	40°31'54.543"N	104°20'54.095"W	1.94	
10148.00	89.100	314.600	6691.77	3902.60	2720.73	-2797.86	40°31'55.208"N	104°20'54.963"W	0.67	
10242.00	89.500	312.500	6692.92	3996.58	2785.49	-2865.98	40°31'55.857"N	104°20'55.834"W	2.27	
10337.00	89.800	312.800	6693.50	4091.55	2849.85	-2935.85	40°31'56.502"N	104°20'56.728"W	0.45	
10431.00	89.300	312.300	6694.23	4185.52	2913.41	-3005.10	40°31'57.139"N	104°20'57.614"W	0.75	
10528.00	89.400	311.000	6695.34	4282.43	2977.87	-3077.57	40°31'57.785"N	104°20'58.542"W	1.34	
10622.00	89.500	312.900	6696.24	4376.35	3040.70	-3147.47	40°31'58.415"N	104°20'59.437"W	2.02	
10717.00	89.200	312.800	6697.32	4471.33	3105.31	-3217.12	40°31'59.062"N	104°21'00.328"W	0.33	
10811.00	89.300	312.700	6698.55	4565.30	3169.11	-3286.14	40°31'59.701"N	104°21'01.211"W	0.15	
10906.00	89.200	313.300	6699.79	4660.27	3233.89	-3355.61	40°32'00.350"N	104°21'02.100"W	0.64	
11000.00	89.300	313.600	6701.02	4754.26	3298.53	-3423.85	40°32'00.997"N	104°21'02.972"W	0.34	
11095.00	89.500	312.700	6702.01	4849.24	3363.50	-3493.15	40°32'01.648"N	104°21'03.859"W	0.97	
11190.00	89.800	313.000	6702.60	4944.22	3428.11	-3562.80	40°32'02.296"N	104°21'04.750"W	0.45	
11284.00	90.000	313.900	6702.76	5038.21	3492.75	-3631.04	40°32'02.943"N	104°21'05.623"W	0.98	
11379.00	88.900	313.700	6703.67	5133.20	3558.50	-3699.60	40°32'03.601"N	104°21'06.500"W	1.18	
11473.00	87.300	314.400	6706.79	5227.15	3623.82	-3767.12	40°32'04.255"N	104°21'07.363"W	1.86	
11568.00	86.200	314.100	6712.17	5321.99	3690.00	-3835.06	40°32'04.918"N	104°21'08.232"W	1.20	
11662.00	85.800	315.500	6718.73	5415.75	3756.08	-3901.60	40°32'05.579"N	104°21'09.083"W	1.55	
11757.00	87.600	313.100	6724.20	5510.59	3822.31	-3969.47	40°32'06.242"N	104°21'09.950"W	3.15	
11851.00	89.000	313.200	6726.99	5604.53	3886.56	-4038.01	40°32'06.886"N	104°21'10.827"W	1.49	
11946.00	88.600	313.100	6728.98	5699.50	3951.52	-4107.31	40°32'07.537"N	104°21'11.714"W	0.43	
12040.00	89.000	312.400	6730.95	5793.45	4015.31	-4176.32	40°32'08.176"N	104°21'12.597"W	0.86	
12135.00	90.000	311.000	6731.78	5888.37	4078.51	-4247.24	40°32'08.809"N	104°21'13.505"W	1.81	
12229.00	90.400	311.000	6731.45	5982.23	4140.17	-4318.19	40°32'09.428"N	104°21'14.413"W	0.43	
12323.00	90.700	310.300	6730.55	6076.06	4201.41	-4389.50	40°32'10.042"N	104°21'15.327"W	0.81	LAST BHI MWD SURVEY
12391.00	90.700	310.300	6729.71	6143.91	4245.38	-4441.36	40°32'10.483"N	104°21'15.991"W	0.00	PROJECTION TO BIT



Actual Wellpath Report

CROW VALLEY 7-62-32-1A AWP

Page 5 of 6



REFERENCE WELLPATH IDENTIFICATION			
Operator	MARATHON OIL COMPANY	Slot	SLOT#01 CROW VALLEY 7-62-32-1A (465°FSL & 465°FEL, SEC.32)
Area	COLORADO	Well	CROW VALLEY 7-62-32-1A
Field	WELD COUNTY (NAD 83, GRID NORTH)	Wellbore	CROW VALLEY 7-62-32-1A AWB
Facility	SEC.32-T7N-R62W		

HOLE & CASING SECTIONS - Ref Wellbore: CROW VALLEY 7-62-32-1A AWB Ref Wellpath: CROW VALLEY 7-62-32-1A AWP									
String/Diameter	Start MD [ft]	End MD [ft]	Interval [ft]	Start TVD [ft]	End TVD [ft]	Start N/S [ft]	Start E/W [ft]	End N/S [ft]	End E/W [ft]
7in Casing Intermediate	31.00	7033.00	7002.00	31.00	6635.25	0.00	0.00	507.17	-615.67
6in Open Hole	7033.00	12391.00	5358.00	6635.25	6729.71	507.17	-615.67	4245.38	-4441.36

TARGETS									
Name	MD [ft]	TVD [ft]	North [ft]	East [ft]	Grid East [US ft]	Grid North [US ft]	Latitude	Longitude	Shape
CROW VALLEY 7-62-32-1A SECTION LINES		0.00	0.00	0.00	3322840.94	1436006.34	40°31'27.965"N	104°20'19.194"W	polygon
CROW VALLEY 7-62-32-1A LANDING		6680.00	673.87	-725.77	3322115.19	1436680.18	40°31'34.717"N	104°20'28.477"W	point
CROW VALLEY 7-62-32-1A PT#1 (FAULT#3)		6701.00	1357.15	-1436.98	3321404.01	1437363.45	40°31'41.560"N	104°20'37.571"W	point
CROW VALLEY 7-62-32-1A PT#2		6703.00	2668.04	-2799.82	3320041.21	1438674.29	40°31'54.688"N	104°20'54.997"W	point
CROW VALLEY 7-62-32-1A PT#3		6719.00	3185.24	-3338.16	3319502.89	1439191.47	40°31'59.867"N	104°21'01.882"W	point
CROW VALLEY 7-62-32-1A BHL ON PLAT (460°FNL & 460°FWL, REV-1)		6727.00	4294.88	-4441.30	3318399.79	1440301.07	40°32'10.972"N	104°21'15.982"W	point
CROW VALLEY 7-62-32-1A HARDLINES (460' SETBACKS)		6727.00	0.00	0.00	3322840.94	1436006.34	40°31'27.965"N	104°20'19.194"W	polygon
CROW VALLEY 7-62-32-1A PT#4 (FAULT#4)		6743.00	3577.11	-3746.13	3319094.93	1439583.33	40°32'03.791"N	104°21'07.099"W	point
CROW VALLEY 7-62-32-1A BHL ON PLAT (460°FNL & 460°FWL, REV-3)		6746.00	4294.87	-4441.30	3318399.79	1440301.06	40°32'10.972"N	104°21'15.982"W	point
CROW VALLEY 7-62-32-1A BHL ON PLAT (460°FNL & 460°FWL, REV-2)		6751.00	4294.87	-4441.30	3318399.79	1440301.07	40°32'10.972"N	104°21'15.982"W	point
CROW VALLEY 7-62-32-1A PT#5		6756.00	3879.47	-4060.57	3318780.51	1439885.68	40°32'06.819"N	104°21'11.121"W	point
CROW VALLEY 7-62-32-1A BHL ON PLAT (460°FNL & 460°FWL, REV-4)		6765.00	4294.87	-4441.30	3318399.79	1440301.06	40°32'10.972"N	104°21'15.982"W	point

WELLPATH COMPOSITION - Ref Wellbore: CROW VALLEY 7-62-32-1A AWB Ref Wellpath: CROW VALLEY 7-62-32-1A AWP				
Start MD [ft]	End MD [ft]	Positional Uncertainty Model	Log Name/Comment	Wellbore
766.00	12323.00	NaviTrak (Standard)	BHI MWD SURVEYS<937-12323>	CROW VALLEY 7-62-32-1A AWB
12323.00	12391.00	Blind Drilling (std)	Projection to bit	CROW VALLEY 7-62-32-1A AWB

**Actual Wellpath Report**

CROW VALLEY 7-62-32-1A AWP

Page 6 of 6

**REFERENCE WELLPATH IDENTIFICATION**

Operator	MARATHON OIL COMPANY	Slot	SLOT#01 CROW VALLEY 7-62-32-1A (465°FSL & 465°FEL, SEC.32)
Area	COLORADO	Well	CROW VALLEY 7-62-32-1A
Field	WELD COUNTY (NAD 83, GRID NORTH)	Wellbore	CROW VALLEY 7-62-32-1A AWP
Facility	SEC.32-T7N-R62W		

WELLPATH COMMENTS

MD [ft]	Inclination [°]	Azimuth [°]	TVD [ft]	Comment
766.00	0.000	178.200	766.00	TIE ON POINT
12323.00	90.700	310.300	6730.55	LAST BHI MWD SURVEY
12391.00	90.700	310.300	6729.71	PROJECTION TO BIT