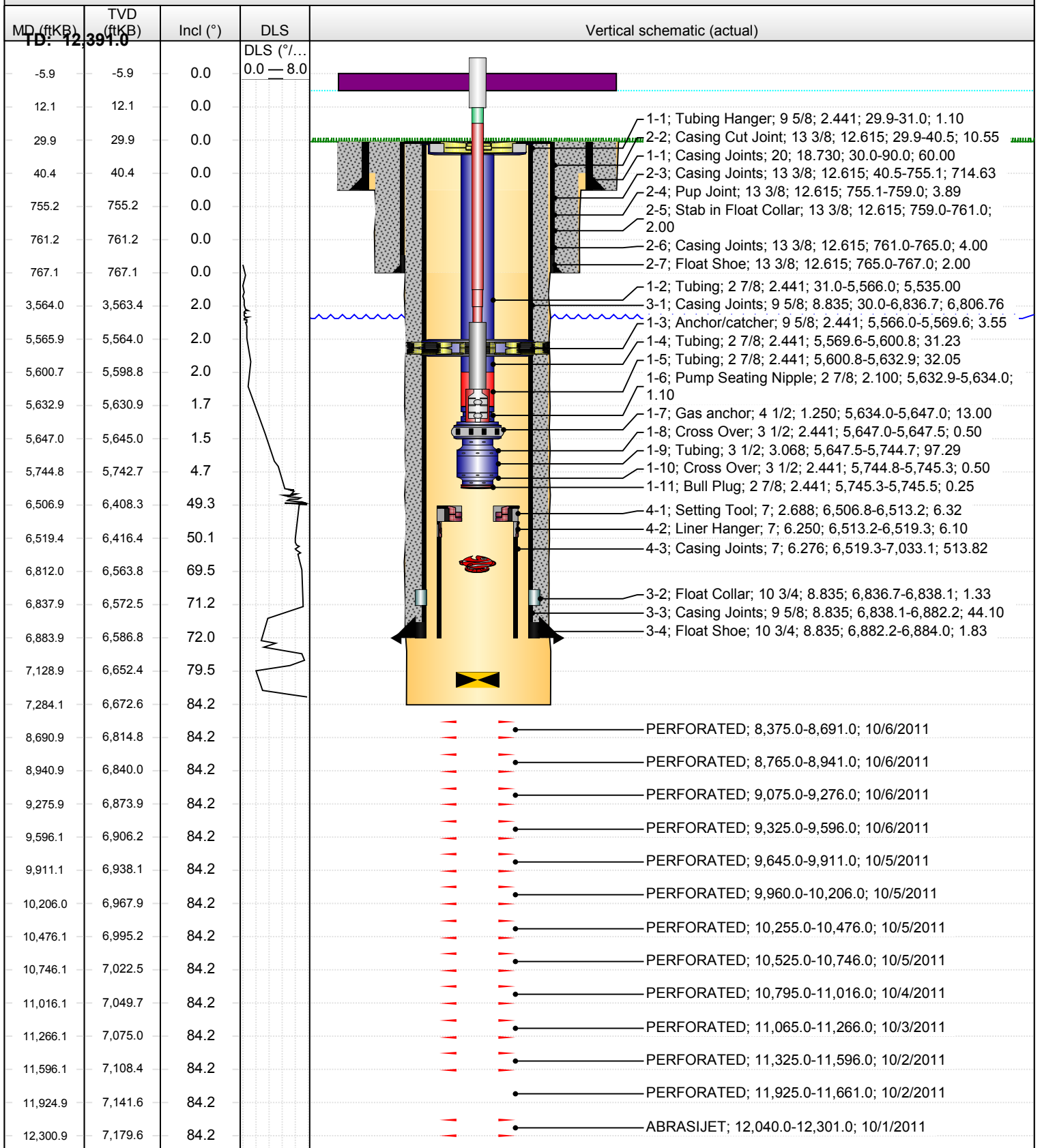


Field Name <b>CROW VALLEY</b>	State/Province <b>COLORADO</b>	Qtr/Qtr, Block, Sec, Town, Range <b>SE/SE, Sec. 32, T7N, R62W</b>	E/W Dist (ft) <b>465.0</b>	E/W Ref <b>FEL</b>	N/S Dist (ft) <b>465.0</b>	N/S Ref <b>FSL</b>
API/ IPO UWI <b>0512333352</b>	Ground Elevation (ft) <b>4,914.00</b>		Original KB Elevation (ft) <b>4,944.00</b>		KB-Ground Distance (ft) <b>30.00</b>	

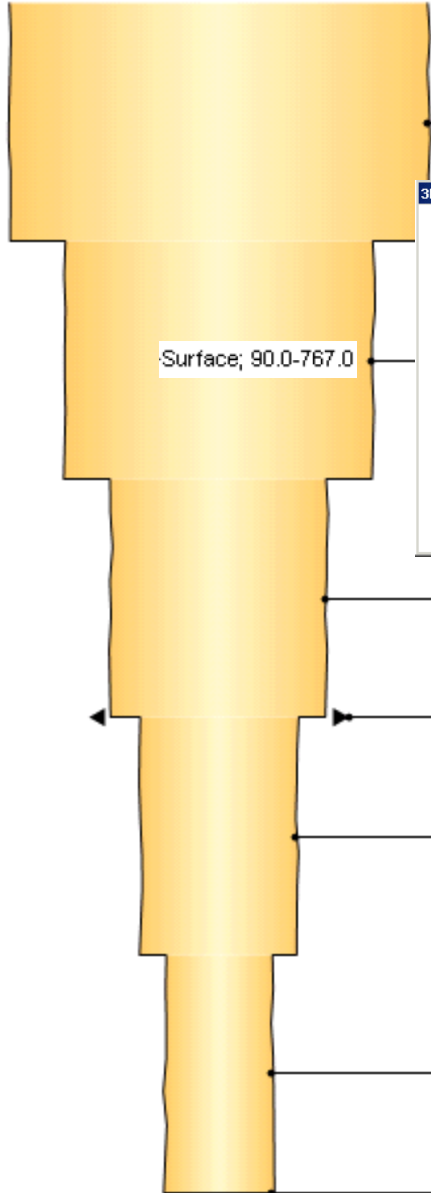
**HORIZONTAL - CROW VALLEY 7-62-32-1A, 1/9/2012 2:28:54 PM**



Field Name <b>CROW VALLEY</b>	State/Province <b>COLORADO</b>	Qtr/Qtr, Block, Sec, Town, Range <b>SE/SE, Sec. 32, T7N, R62W</b>	E/W Dist (ft) <b>465.0</b>	E/W Ref <b>FEL</b>	N/S Dist (ft) <b>465.0</b>	N/S Ref <b>FSL</b>
API/ IPO UWI <b>0512333352</b>	Ground Elevation (ft) <b>4,914.00</b>		Original KB Elevation (ft) <b>4,944.00</b>		KB-Ground Distance (ft) <b>30.00</b>	

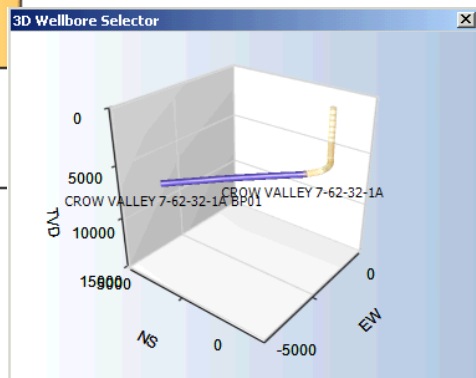
**HORIZONTAL - CROW VALLEY 7-62-32-1A BP01, 1/9/2012 2:28:54 PM**

MD (ftKB)	TVD (ftKB)	Incl (°)	DLS	Vertical schematic (actual)
<b>ID: 12,391.0</b>	<b>-18.0</b>	<b>0.0</b>	<b>DLS (°/... 0.0 — 20.</b>	
-18.0	-18.0	0.0		
-5.9	0.0	0.0		
0.0	0.0	0.0		
12.1				
14.1	14.1	0.0		
29.9				
31.2	31.2	0.0		1-1; Tubing Hanger; 9 5/8; 2.441; 29.9-31.0; 1.10
40.4				2-2; Casing Cut Joint; 13 3/8; 12.615; 29.9-40.5; 10.55
89.9	89.9	0.0		1-1; Casing Joints; 20; 18.730; 30.0-90.0; 60.00
755.2				2-3; Casing Joints; 13 3/8; 12.615; 40.5-755.1; 714.63
758.9	758.9	0.0		2-4; Pup Joint; 13 3/8; 12.615; 755.1-759.0; 3.89
761.2				2-5; Stab in Float Collar; 13 3/8; 12.615; 759.0-761.0; 2.00
765.1	765.1	0.0		2-6; Casing Joints; 13 3/8; 12.615; 761.0-765.0; 4.00
767.1				2-7; Float Shoe; 13 3/8; 12.615; 765.0-767.0; 2.00
1,664.0	1,664.0	0.8		1-2; Tubing; 2 7/8; 2.441; 31.0-5,566.0; 5,535.00
3,564.0				3-1; Casing Joints; 9 5/8; 8.835; 30.0-6,836.7; 6,806.76
5,463.9	5,462.1	2.2		
5,565.9				1-3; Anchor/catcher; 9 5/8; 2.441; 5,566.0-5,569.6; 3.55
5,569.6	5,567.6	2.0		1-4; Tubing; 2 7/8; 2.441; 5,569.6-5,600.8; 31.23
5,600.7				1-5; Tubing; 2 7/8; 2.441; 5,600.8-5,632.9; 32.05
5,613.8	5,611.9	2.0		1-6; Pump Seating Nipple; 2 7/8; 2.100; 5,632.9-5,634.0; 1.10
5,632.9				1-7; Gas anchor; 4 1/2; 1.250; 5,634.0-5,647.0; 13.00
5,633.9	5,631.9	1.6		1-8; Cross Over; 3 1/2; 2.441; 5,647.0-5,647.5; 0.50
5,647.0				1-9; Tubing; 3 1/2; 3.068; 5,647.5-5,744.7; 97.29
5,647.3	5,645.4	1.5		1-10; Cross Over; 3 1/2; 2.441; 5,744.8-5,745.3; 0.50
5,744.8				1-11; Bull Plug; 2 7/8; 2.441; 5,745.3-5,745.5; 0.25
5,745.4	5,743.3	4.7		
6,506.9				4-1; Setting Tool; 7; 2.688; 6,506.8-6,513.2; 6.32
6,513.1	6,412.4	49.7		4-2; Liner Hanger; 7; 6.250; 6,513.2-6,519.3; 6.10
6,519.4				4-3; Casing Joints; 7; 6.276; 6,519.3-7,033.1; 513.82
6,792.0	6,556.4	68.1		
6,812.0				3-2; Float Collar; 10 3/4; 8.835; 6,836.7-6,838.1; 1.33
6,836.6	6,572.0	71.1		3-3; Casing Joints; 9 5/8; 8.835; 6,838.1-6,882.2; 44.10
6,837.9				3-4; Float Shoe; 10 3/4; 8.835; 6,882.2-6,884.0; 1.83
6,882.2	6,586.3	72.1		5-2; TIE BACK SLEEVE; 4 1/2; 4.000; 6,955.1-6,976.5; 21.34
6,883.9				5-3; LINER PACKER; 4 1/2; 4.000; 6,976.5-6,979.0; 2.54
6,910.1	6,595.1	71.4		5-4; VAM COUPLING; 4 1/2; 4.000; 6,979.0-6,979.9; 0.87
6,955.1				5-5; LINER HANGER; 4 1/2; 4.000; 6,979.9-6,985.6; 5.72
6,976.4	6,616.5	71.4		5-6; XO; 4 1/2; 4.000; 6,985.6-6,986.3; 0.67
6,979.0				4-4; Casing Joints; 7; 6.276; 7,033.1-7,034.4; 1.32
6,980.0	6,617.5	71.7		4-5; Casing - Milled Section; 7; 6.276; 7,034.4-7,036.0; 1.57
6,985.6				4-6; Float Collar; 7; 6.313; 7,036.0-7,037.3; 1.33
6,986.2	6,619.4	72.2		4-7; Float Shoe; 7; 6.313; 7,037.3-7,040.0; 2.70
7,033.1				5-7; Casing Joints; 4 1/2; 4.000; 6,986.3-12,336.9; 5,350.58
7,034.4	6,633.2	75.6		5-8; Landing collar; 5; 4.000; 12,336.8-12,338.4; 1.56
7,036.1				5-9; Float Collar; 5; 4.000; 12,338.4-12,339.6; 1.22
7,037.4	6,633.9	75.8		5-10; Casing Joints; 4 1/2; 4.000; 12,339.6-12,384.5; 44.87
7,040.0				5-11; Float Shoe; 5; 4.000; 12,384.5-12,387.0; 2.50
7,284.1	6,681.9	89.8		
12,336.9				
12,338.3	6,730.4	90.7		
12,339.6				
12,384.5	6,729.8	90.7		
12,387.1				
12,391.1	6,729.7	90.7		



Conductor; 30.0-90.0

Surface; 90.0-767.0



Intermediate 1; 767.0-6,884.0

Sidetrack - CROW VALLEY 7-62-32-1A BP01; 6,884.0  
Kick-off; Cement Plug; 6,884.0

Intermediate 1; 6,884.0-7,284.0

Production 1; 7,284.0-12,391.0

TD - CROW VALLEY 7-62-32-1A BP01; 12,391.0