

# KERR-MCGEE OIL & GAS ONSHORE LP

Location: COLORADO Slot: SLOT#34 BARCLAY 29C-27HZ (616'FSL & 2012'FWL, SEC.27)  
Field: WELD COUNTY (KERR MCGEE) Well: BARCLAY 29C-27HZ  
Facility: SEC.27-T3N-R66W Wellbore: BARCLAY 29C-27HZ PWB

Plot reference wellpath is BARCLAY 29C-27HZ (REV-8.0) PWP

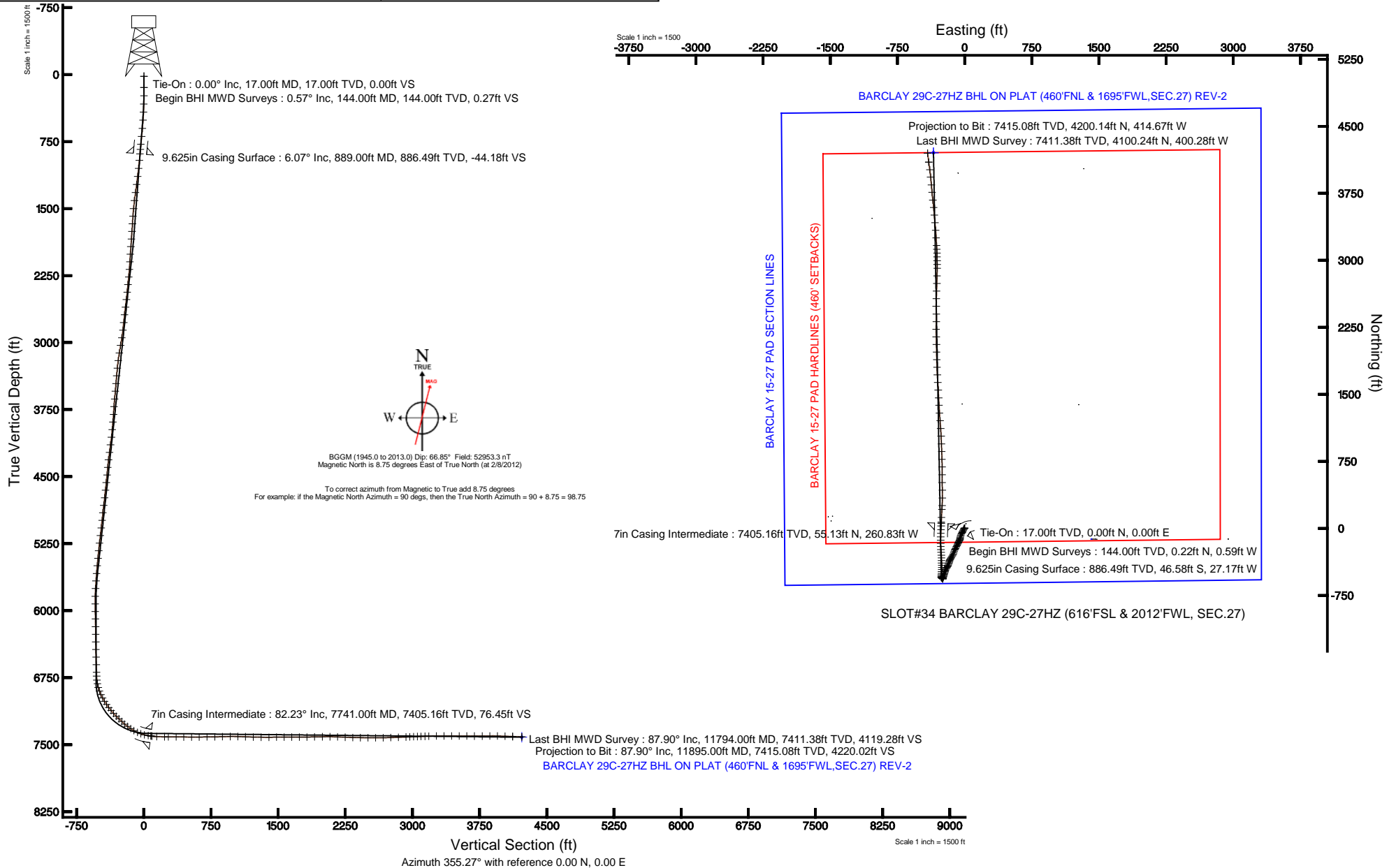
True vertical depths are referenced to XTREME 8 (RKB) Grid System: NAD83 / Lambert Colorado SP, Northern Zone (501), US feet

Measured depths are referenced to XTREME 8 (RKB) North Reference: True north

XTREME 8 (RKB) to Mean Sea Level: 4976 feet Scale: True distance

Mean Sea Level to Mud line (At Slot: SLOT#34 BARCLAY 29C-27HZ (616'FSL & 2012'FWL, SEC.27)): 0 feet Depths are in feet

Coordinates are in feet referenced to Slot Created by: wjlgf02 on 2/28/2012





# Actual Wellpath Report

BARCLAY 29C-27HZ AWP

Page 1 of 6



REFERENCE WELLPATH IDENTIFICATION			
Operator	KERR-MCGEE OIL & GAS ONSHORE LP	Slot	SLOT#34 BARCLAY 29C-27HZ (616'FSL & 2012'FWL, SEC.27)
Area	COLORADO	Well	BARCLAY 29C-27HZ
Field	WELD COUNTY (KERR MCGEE)	Wellbore	BARCLAY 29C-27HZ AWB
Facility	SEC.27-T3N-R66W		

REPORT SETUP INFORMATION			
Projection System	NAD83 / Lambert Colorado SP, Northern Zone (501), US feet	Software System	WellArchitect® 3.0.2
North Reference	True	User	Wilsjef02
Scale	0.999957	Report Generated	2/28/2012 at 08:38:13
Convergence at slot	0.47° East	Database/Source file	WellArchitectDB/BARCLAY_29C-27HZ_AWB.xml

WELLPATH LOCATION						
	Local coordinates		Grid coordinates		Geographic coordinates	
	North[ft]	East[ft]	Easting[US ft]	Northing[US ft]	Latitude	Longitude
Slot Location	-4224.42	1381.24	3205157.51	1313107.27	40°11'25.958"N	104°45'56.290"W
Facility Reference Pt			3203741.63	1317320.00	40°12'07.704"N	104°46'14.088"W
Field Reference Pt			3197771.84	1268891.29	40°04'09.600"N	104°47'36.000"W

WELLPATH DATUM			
Calculation method	Minimum curvature	XTREME 8 (RKB) to Facility Vertical Datum	4976.00ft
Horizontal Reference Pt	Slot	XTREME 8 (RKB) to Mean Sea Level	4976.00ft
Vertical Reference Pt	XTREME 8 (RKB)	XTREME 8 (RKB) to Mud Line at Slot (SLOT#34 BARCLAY 29C-27HZ (616'FSL & 2012'FWL, SEC.27))	4976.00ft
MD Reference Pt	XTREME 8 (RKB)	Section Origin	N 0.00, E 0.00 ft
Field Vertical Reference	Mean Sea Level	Section Azimuth	355.27°



# Actual Wellpath Report

BARCLAY 29C-27HZ AWP

Page 2 of 6



## REFERENCE WELLPATH IDENTIFICATION

Operator	KERR-MCGEE OIL & GAS ONSHORE LP	Slot	SLOT#34 BARCLAY 29C-27HZ (616'FSL & 2012'FWL, SEC.27)
Area	COLORADO	Well	BARCLAY 29C-27HZ
Field	WELD COUNTY (KERR MCGEE)	Wellbore	BARCLAY 29C-27HZ AWB
Facility	SEC.27-T3N-R66W		

## WELLPATH DATA (156 stations) † = interpolated/extrapolated station

MD [ft]	Inclination [°]	Azimuth [°]	TVD [ft]	Vert Sect [ft]	North [ft]	East [ft]	Latitude	Longitude	DLS [°/100ft]	Comments
0.00†	0.000	290.540	0.00	0.00	0.00	0.00	40°11'25.958"N	104°45'56.290"W	0.00	
17.00	0.000	290.540	17.00	0.00	0.00	0.00	40°11'25.958"N	104°45'56.290"W	0.00	Tie-On
144.00	0.570	290.540	144.00	0.27	0.22	-0.59	40°11'25.960"N	104°45'56.298"W	0.45	Begin BHI MWD Surveys
237.00	0.870	233.110	236.99	0.09	-0.04	-1.59	40°11'25.958"N	104°45'56.310"W	0.80	
328.00	1.920	210.870	327.96	-1.52	-1.76	-2.92	40°11'25.941"N	104°45'56.328"W	1.28	
419.00	3.440	213.540	418.86	-4.90	-5.35	-5.21	40°11'25.905"N	104°45'56.357"W	1.68	
510.00	5.280	210.150	509.59	-10.48	-11.24	-8.83	40°11'25.847"N	104°45'56.404"W	2.04	
601.00	6.000	207.890	600.15	-17.92	-19.07	-13.15	40°11'25.770"N	104°45'56.460"W	0.83	
692.00	6.390	207.850	690.62	-26.19	-27.75	-17.75	40°11'25.684"N	104°45'56.519"W	0.43	
782.00	6.180	205.250	780.08	-34.61	-36.56	-22.15	40°11'25.597"N	104°45'56.575"W	0.39	
839.00	5.890	207.090	836.77	-39.75	-41.94	-24.79	40°11'25.544"N	104°45'56.609"W	0.61	
961.00	6.340	207.120	958.07	-50.79	-53.51	-30.71	40°11'25.429"N	104°45'56.686"W	0.37	
1052.00	7.060	209.180	1048.45	-59.70	-62.86	-35.73	40°11'25.337"N	104°45'56.750"W	0.83	
1143.00	7.970	201.020	1138.67	-70.03	-73.63	-40.72	40°11'25.230"N	104°45'56.815"W	1.54	
1234.00	8.620	198.110	1228.72	-81.99	-86.00	-45.10	40°11'25.108"N	104°45'56.871"W	0.85	
1326.00	8.020	192.550	1319.75	-94.48	-98.82	-48.64	40°11'24.981"N	104°45'56.917"W	1.09	
1417.00	7.080	182.830	1409.96	-106.10	-110.62	-50.30	40°11'24.865"N	104°45'56.938"W	1.74	
1508.00	5.610	185.510	1500.40	-116.03	-120.65	-51.00	40°11'24.766"N	104°45'56.947"W	1.65	
1593.00	4.580	201.660	1585.07	-123.16	-127.94	-52.65	40°11'24.694"N	104°45'56.968"W	2.07	
1678.00	3.740	212.820	1669.85	-128.40	-133.42	-55.41	40°11'24.640"N	104°45'57.004"W	1.37	
1764.00	4.880	208.370	1755.60	-133.69	-139.00	-58.67	40°11'24.584"N	104°45'57.046"W	1.38	
1849.00	5.000	209.480	1840.29	-139.78	-145.41	-62.21	40°11'24.521"N	104°45'57.092"W	0.18	
1934.00	5.090	208.190	1924.96	-146.01	-151.95	-65.81	40°11'24.456"N	104°45'57.138"W	0.17	
2020.00	4.120	208.770	2010.68	-151.79	-158.02	-69.10	40°11'24.396"N	104°45'57.180"W	1.13	
2105.00	3.840	201.330	2095.48	-156.89	-163.35	-71.61	40°11'24.344"N	104°45'57.213"W	0.69	
2190.00	5.200	205.310	2180.21	-162.78	-169.49	-74.29	40°11'24.283"N	104°45'57.247"W	1.64	
2276.00	6.580	204.680	2265.75	-170.45	-177.49	-78.01	40°11'24.204"N	104°45'57.295"W	1.61	
2361.00	6.440	206.190	2350.20	-178.78	-186.19	-82.15	40°11'24.118"N	104°45'57.349"W	0.26	
2446.00	6.820	204.920	2434.64	-187.26	-195.04	-86.38	40°11'24.031"N	104°45'57.403"W	0.48	
2531.00	6.960	203.820	2519.02	-196.17	-204.33	-90.59	40°11'23.939"N	104°45'57.457"W	0.23	
2616.00	8.660	205.820	2603.23	-206.20	-214.80	-95.45	40°11'23.835"N	104°45'57.520"W	2.03	
2703.00	7.880	209.990	2689.33	-216.75	-225.87	-101.29	40°11'23.726"N	104°45'57.595"W	1.13	
2789.00	6.750	210.970	2774.63	-225.70	-235.31	-106.83	40°11'23.633"N	104°45'57.667"W	1.32	
2876.00	8.130	202.950	2860.89	-235.30	-245.36	-111.86	40°11'23.533"N	104°45'57.731"W	1.98	
2962.00	9.780	197.590	2945.84	-247.44	-257.92	-116.44	40°11'23.409"N	104°45'57.790"W	2.15	
3048.00	9.950	196.450	3030.57	-261.13	-272.01	-120.75	40°11'23.270"N	104°45'57.846"W	0.30	
3135.00	9.970	198.940	3116.26	-275.03	-286.34	-125.33	40°11'23.128"N	104°45'57.905"W	0.50	
3221.00	8.300	206.510	3201.17	-287.16	-298.94	-130.52	40°11'23.004"N	104°45'57.972"W	2.39	
3308.00	7.780	214.640	3287.32	-297.08	-309.40	-136.67	40°11'22.900"N	104°45'58.051"W	1.44	
3394.00	7.080	219.220	3372.60	-305.40	-318.30	-143.33	40°11'22.813"N	104°45'58.137"W	1.07	
3481.00	6.160	217.400	3459.02	-312.72	-326.16	-149.55	40°11'22.735"N	104°45'58.217"W	1.08	
3567.00	5.730	203.650	3544.56	-319.92	-333.76	-154.08	40°11'22.660"N	104°45'58.275"W	1.73	
3654.00	5.550	203.160	3631.14	-327.46	-341.60	-157.47	40°11'22.582"N	104°45'58.319"W	0.21	
3740.00	5.260	209.720	3716.75	-334.38	-348.85	-161.06	40°11'22.511"N	104°45'58.365"W	0.79	
3827.00	4.570	214.090	3803.43	-340.37	-355.19	-164.98	40°11'22.448"N	104°45'58.416"W	0.90	
3913.00	4.920	198.110	3889.14	-346.44	-361.53	-168.05	40°11'22.385"N	104°45'58.455"W	1.58	
3999.00	5.850	190.700	3974.76	-354.07	-369.34	-170.01	40°11'22.308"N	104°45'58.481"W	1.35	
4084.00	6.880	191.900	4059.24	-363.12	-378.58	-171.86	40°11'22.217"N	104°45'58.505"W	1.22	
4170.00	8.060	197.410	4144.51	-373.64	-389.37	-174.73	40°11'22.110"N	104°45'58.541"W	1.60	
4255.00	8.710	200.740	4228.60	-384.97	-401.08	-178.79	40°11'21.995"N	104°45'58.594"W	0.95	
4340.00	7.720	201.300	4312.73	-395.91	-412.42	-183.15	40°11'21.883"N	104°45'58.650"W	1.17	
4426.00	6.230	207.270	4398.09	-405.06	-421.95	-187.38	40°11'21.788"N	104°45'58.704"W	1.92	
4511.00	5.880	207.480	4482.61	-412.66	-429.91	-191.50	40°11'21.710"N	104°45'58.758"W	0.41	
4597.00	7.330	208.070	4568.04	-420.99	-438.66	-196.12	40°11'21.623"N	104°45'58.817"W	1.69	
4682.00	7.670	214.180	4652.31	-429.97	-448.13	-201.86	40°11'21.530"N	104°45'58.891"W	1.02	
4768.00	8.400	212.750	4737.47	-439.42	-458.17	-208.48	40°11'21.430"N	104°45'58.976"W	0.88	
4853.00	7.610	202.620	4821.65	-449.34	-468.58	-214.00	40°11'21.327"N	104°45'59.047"W	1.90	
4938.00	6.290	194.280	4906.02	-458.75	-478.29	-217.32	40°11'21.232"N	104°45'59.090"W	1.95	
5023.00	6.470	195.970	4990.49	-467.63	-487.41	-219.78	40°11'21.141"N	104°45'59.122"W	0.31	
5109.00	6.980	197.140	5075.90	-477.01	-497.06	-222.66	40°11'21.046"N	104°45'59.159"W	0.61	



# Actual Wellpath Report

BARCLAY 29C-27HZ AWP

Page 3 of 6



REFERENCE WELLPATH IDENTIFICATION			
Operator	KERR-MCGEE OIL & GAS ONSHORE LP	Slot	SLOT#34 BARCLAY 29C-27HZ (616'FSL & 2012'FWL, SEC.27)
Area	COLORADO	Well	BARCLAY 29C-27HZ
Field	WELD COUNTY (KERR MCGEE)	Wellbore	BARCLAY 29C-27HZ AWB
Facility	SEC.27-T3N-R66W		

WELLPATH DATA (156 stations) † = interpolated/extrapolated station										
MD [ft]	Inclination [°]	Azimuth [°]	TVD [ft]	Vert Sect [ft]	North [ft]	East [ft]	Latitude	Longitude	DLS [°/100ft]	Comments
5194.00	7.140	195.050	5160.26	-486.77	-507.10	-225.55	40°11'20.947"N	104°45'59.196"W	0.36	
5279.00	7.020	195.850	5244.61	-496.61	-517.19	-228.34	40°11'20.847"N	104°45'59.232"W	0.18	
5365.00	5.760	199.490	5330.07	-505.46	-526.32	-231.22	40°11'20.757"N	104°45'59.269"W	1.54	
5450.00	5.960	201.510	5414.63	-513.31	-534.45	-234.26	40°11'20.677"N	104°45'59.308"W	0.34	
5535.00	6.070	198.790	5499.16	-521.39	-542.81	-237.32	40°11'20.594"N	104°45'59.348"W	0.36	
5621.00	5.000	196.230	5584.76	-529.06	-550.71	-239.83	40°11'20.516"N	104°45'59.380"W	1.28	
5706.00	4.120	195.840	5669.49	-535.38	-557.20	-241.70	40°11'20.452"N	104°45'59.404"W	1.04	
5791.00	3.490	193.090	5754.30	-540.70	-562.66	-243.12	40°11'20.398"N	104°45'59.423"W	0.77	
5877.00	1.680	185.920	5840.21	-544.43	-566.46	-243.85	40°11'20.360"N	104°45'59.432"W	2.13	
5962.00	0.580	6.880	5925.20	-545.23	-567.28	-243.92	40°11'20.352"N	104°45'59.433"W	2.66	
6047.00	1.340	350.710	6010.19	-543.82	-565.87	-244.03	40°11'20.366"N	104°45'59.434"W	0.94	
6132.00	1.240	330.190	6095.17	-542.00	-564.09	-244.65	40°11'20.384"N	104°45'59.442"W	0.55	
6218.00	1.180	304.690	6181.15	-540.59	-562.78	-245.84	40°11'20.397"N	104°45'59.458"W	0.62	
6303.00	1.550	298.250	6266.13	-539.41	-561.74	-247.57	40°11'20.407"N	104°45'59.480"W	0.47	
6389.00	1.740	292.730	6352.09	-538.18	-560.68	-249.80	40°11'20.417"N	104°45'59.509"W	0.29	
6474.00	1.850	300.060	6437.05	-536.80	-559.49	-252.18	40°11'20.429"N	104°45'59.539"W	0.30	
6560.00	2.000	308.270	6523.00	-534.98	-557.87	-254.56	40°11'20.445"N	104°45'59.570"W	0.36	
6645.00	2.270	310.900	6607.94	-532.77	-555.85	-256.99	40°11'20.465"N	104°45'59.601"W	0.34	
6730.00	2.510	318.890	6692.87	-530.07	-553.34	-259.49	40°11'20.490"N	104°45'59.634"W	0.48	
6773.00	2.530	324.230	6735.83	-528.50	-551.87	-260.66	40°11'20.504"N	104°45'59.649"W	0.55	
6816.00	5.280	354.040	6778.73	-525.70	-549.13	-261.43	40°11'20.532"N	104°45'59.659"W	7.75	
6858.00	10.370	2.120	6820.32	-520.01	-543.42	-261.49	40°11'20.588"N	104°45'59.659"W	12.37	
6901.00	15.820	4.390	6862.19	-510.38	-533.70	-260.89	40°11'20.684"N	104°45'59.652"W	12.73	
6943.00	20.740	5.510	6902.06	-497.40	-520.59	-259.74	40°11'20.814"N	104°45'59.637"W	11.74	
6986.00	25.170	3.750	6941.64	-480.85	-503.87	-258.41	40°11'20.979"N	104°45'59.620"W	10.42	
7028.00	28.550	2.680	6979.11	-462.06	-484.93	-257.36	40°11'21.166"N	104°45'59.606"W	8.13	
7071.00	31.050	1.800	7016.42	-440.85	-463.58	-256.53	40°11'21.377"N	104°45'59.595"W	5.90	
7114.00	34.070	359.300	7052.66	-417.81	-440.45	-256.33	40°11'21.606"N	104°45'59.593"W	7.69	
7156.00	37.380	359.130	7086.75	-393.35	-415.93	-256.66	40°11'21.848"N	104°45'59.597"W	7.88	
7199.00	39.770	358.730	7120.36	-366.59	-389.12	-257.17	40°11'22.113"N	104°45'59.604"W	5.59	
7242.00	41.030	358.570	7153.11	-338.77	-361.26	-257.82	40°11'22.388"N	104°45'59.612"W	2.94	
7285.00	45.340	358.080	7184.46	-309.40	-331.85	-258.69	40°11'22.679"N	104°45'59.623"W	10.05	
7327.00	46.130	356.350	7213.77	-279.34	-301.82	-260.15	40°11'22.975"N	104°45'59.642"W	3.50	
7370.00	46.430	355.010	7243.49	-248.26	-270.83	-262.50	40°11'23.282"N	104°45'59.672"W	2.36	
7413.00	50.600	355.300	7271.97	-216.06	-238.74	-265.21	40°11'23.599"N	104°45'59.707"W	9.71	
7455.00	53.740	358.290	7297.73	-182.91	-205.63	-267.05	40°11'23.926"N	104°45'59.731"W	9.35	
7498.00	56.840	359.710	7322.21	-147.64	-170.29	-267.66	40°11'24.275"N	104°45'59.739"W	7.70	
7541.00	59.230	0.170	7344.97	-111.29	-133.81	-267.69	40°11'24.636"N	104°45'59.739"W	5.63	
7584.00	64.560	1.580	7365.22	-73.55	-95.90	-267.10	40°11'25.010"N	104°45'59.732"W	12.73	
7626.00	71.450	2.140	7380.95	-34.89	-57.00	-265.84	40°11'25.395"N	104°45'59.715"W	16.45	
7669.00	77.100	2.870	7392.59	6.15	-15.67	-264.02	40°11'25.803"N	104°45'59.692"W	13.24	
7711.00	80.650	2.460	7400.70	47.01	25.49	-262.11	40°11'26.210"N	104°45'59.667"W	8.51	
7741.00†	82.234	2.467	7405.16	76.45	55.13	-260.83	40°11'26.503"N	104°45'59.651"W	5.28	7" Casing Point
7754.00	82.920	2.470	7406.84	89.23	68.01	-260.28	40°11'26.630"N	104°45'59.644"W	5.28	
7807.00	86.850	2.380	7411.57	141.60	120.74	-258.05	40°11'27.151"N	104°45'59.615"W	7.42	
7897.00	89.690	3.210	7414.28	230.78	210.58	-253.66	40°11'28.039"N	104°45'59.559"W	3.29	
7940.00	89.880	3.160	7414.44	273.37	253.51	-251.27	40°11'28.463"N	104°45'59.528"W	0.46	
8026.00	89.510	359.930	7414.90	358.84	339.47	-248.95	40°11'29.313"N	104°45'59.498"W	3.78	
8113.00	88.740	359.250	7416.23	445.58	426.46	-249.57	40°11'30.172"N	104°45'59.506"W	1.18	
8199.00	90.250	359.700	7416.99	531.34	512.45	-250.36	40°11'31.022"N	104°45'59.516"W	1.83	
8286.00	90.150	359.770	7416.68	618.08	599.45	-250.76	40°11'31.882"N	104°45'59.521"W	0.14	
8372.00	90.590	359.130	7416.13	703.85	685.44	-251.59	40°11'32.731"N	104°45'59.532"W	0.90	
8459.00	90.740	358.880	7415.12	790.66	772.42	-253.10	40°11'33.591"N	104°45'59.551"W	0.34	
8545.00	91.790	357.940	7413.22	876.50	858.36	-255.49	40°11'34.440"N	104°45'59.582"W	1.64	
8632.00	90.490	357.530	7411.49	963.41	945.28	-258.92	40°11'35.299"N	104°45'59.626"W	1.57	
8718.00	89.450	357.750	7411.53	1049.33	1031.20	-262.46	40°11'36.148"N	104°45'59.672"W	1.24	
8804.00	87.070	355.380	7414.15	1135.26	1117.00	-267.61	40°11'36.996"N	104°45'59.738"W	3.90	
8891.00	88.950	355.810	7417.17	1222.20	1203.68	-274.29	40°11'37.853"N	104°45'59.825"W	2.22	
8978.00	88.680	355.830	7418.97	1309.18	1290.43	-280.63	40°11'38.710"N	104°45'59.906"W	0.31	
9064.00	90.620	357.020	7419.49	1395.15	1376.26	-285.99	40°11'39.558"N	104°45'59.975"W	2.65	



# Actual Wellpath Report

BARCLAY 29C-27HZ AWP

Page 4 of 6



REFERENCE WELLPATH IDENTIFICATION			
Operator	KERR-MCGEE OIL & GAS ONSHORE LP	Slot	SLOT#34 BARCLAY 29C-27HZ (616'FSL & 2012'FWL, SEC.27)
Area	COLORADO	Well	BARCLAY 29C-27HZ
Field	WELD COUNTY (KERR MCGEE)	Wellbore	BARCLAY 29C-27HZ AWB
Facility	SEC.27-T3N-R66W		

## WELLPATH DATA (156 stations)

MD [ft]	Inclination [°]	Azimuth [°]	TVD [ft]	Vert Sect [ft]	North [ft]	East [ft]	Latitude	Longitude	DLS [°/100ft]	Comments
9149.00	90.800	357.360	7418.44	1480.10	1461.15	-290.16	40°11'40.397"N	104°46'00.029"W	0.45	
9235.00	90.430	356.670	7417.52	1566.05	1547.03	-294.64	40°11'41.246"N	104°46'00.087"W	0.91	
9320.00	89.230	356.270	7417.77	1651.03	1631.86	-299.87	40°11'42.084"N	104°46'00.154"W	1.49	
9406.00	90.460	356.960	7418.00	1737.00	1717.71	-304.95	40°11'42.932"N	104°46'00.220"W	1.64	
9491.00	90.680	357.710	7417.15	1821.94	1802.61	-308.90	40°11'43.771"N	104°46'00.271"W	0.92	
9576.00	91.080	358.470	7415.85	1906.83	1887.56	-311.73	40°11'44.611"N	104°46'00.307"W	1.01	
9662.00	91.290	359.170	7414.07	1992.65	1973.52	-313.50	40°11'45.460"N	104°46'00.330"W	0.85	
9747.00	89.110	358.570	7413.77	2077.47	2058.50	-315.18	40°11'46.300"N	104°46'00.352"W	2.66	
9833.00	88.150	358.760	7415.83	2163.30	2144.45	-317.18	40°11'47.149"N	104°46'00.377"W	1.14	
9918.00	87.660	0.360	7418.94	2248.00	2229.38	-317.84	40°11'47.989"N	104°46'00.386"W	1.97	
10003.00	88.180	1.070	7422.02	2332.56	2314.32	-316.78	40°11'48.828"N	104°46'00.372"W	1.03	
10088.00	89.230	358.790	7423.94	2417.25	2399.29	-316.88	40°11'49.668"N	104°46'00.374"W	2.95	
10174.00	89.260	0.100	7425.08	2503.01	2485.28	-317.71	40°11'50.517"N	104°46'00.384"W	1.52	
10259.00	89.750	1.920	7425.81	2587.58	2570.26	-316.21	40°11'51.357"N	104°46'00.365"W	2.22	
10345.00	90.950	2.490	7425.29	2672.95	2656.19	-312.91	40°11'52.206"N	104°46'00.322"W	1.54	
10430.00	92.530	1.350	7422.71	2757.33	2741.10	-310.06	40°11'53.046"N	104°46'00.286"W	2.29	
10515.00	91.810	1.490	7419.49	2841.78	2826.01	-307.95	40°11'53.885"N	104°46'00.259"W	0.86	
10600.00	92.150	359.770	7416.55	2926.36	2910.95	-307.02	40°11'54.724"N	104°46'00.247"W	2.06	
10643.00	91.840	359.620	7415.05	2969.20	2953.93	-307.25	40°11'55.149"N	104°46'00.250"W	0.80	
10685.00	92.280	359.570	7413.54	3011.06	2995.90	-307.55	40°11'55.563"N	104°46'00.253"W	1.05	
10728.00	92.400	358.810	7411.79	3053.92	3038.86	-308.15	40°11'55.988"N	104°46'00.261"W	1.79	
10770.00	91.810	358.090	7410.24	3095.83	3080.81	-309.29	40°11'56.403"N	104°46'00.276"W	2.22	
10813.00	91.600	357.430	7408.97	3138.77	3123.76	-310.97	40°11'56.827"N	104°46'00.297"W	1.61	
10856.00	91.910	357.250	7407.65	3181.72	3166.70	-312.96	40°11'57.251"N	104°46'00.323"W	0.83	
10941.00	90.800	356.130	7405.64	3266.66	3251.53	-317.87	40°11'58.090"N	104°46'00.386"W	1.85	
11026.00	89.320	355.000	7405.55	3351.66	3336.27	-324.44	40°11'58.927"N	104°46'00.471"W	2.19	
11111.00	90.430	355.130	7405.73	3436.66	3420.95	-331.75	40°11'59.764"N	104°46'00.565"W	1.31	
11197.00	90.650	355.270	7404.92	3522.65	3506.65	-338.95	40°12'00.611"N	104°46'00.658"W	0.30	
11282.00	88.550	355.010	7405.52	3607.65	3591.33	-346.15	40°12'01.448"N	104°46'00.751"W	2.49	
11367.00	90.150	353.100	7406.48	3692.62	3675.87	-354.95	40°12'02.283"N	104°46'00.864"W	2.93	
11453.00	90.220	355.000	7406.20	3778.59	3761.40	-363.87	40°12'03.128"N	104°46'00.979"W	2.21	
11538.00	91.880	355.010	7404.65	3863.57	3846.06	-371.27	40°12'03.965"N	104°46'01.075"W	1.95	
11624.00	87.940	353.750	7404.78	3949.54	3931.63	-379.69	40°12'04.810"N	104°46'01.183"W	4.81	
11709.00	87.630	353.300	7408.07	4034.44	4016.02	-389.27	40°12'05.644"N	104°46'01.307"W	0.64	
11794.00	87.900	351.800	7411.38	4119.28	4100.24	-400.28	40°12'06.476"N	104°46'01.449"W	1.79	Last BHI MWD Survey
11895.00	87.900	351.800	7415.08	4220.02	4200.14	-414.67	40°12'07.464"N	104°46'01.634"W	0.00	Projection to Bit

## HOLE & CASING SECTIONS - Ref Wellbore: BARCLAY 29C-27HZ AWB Ref Wellpath: BARCLAY 29C-27HZ AWP

String/Diameter	Start MD [ft]	End MD [ft]	Interval [ft]	Start TVD [ft]	End TVD [ft]	Start N/S [ft]	Start E/W [ft]	End N/S [ft]	End E/W [ft]
13.5in Open Hole	17.00	889.00	872.00	17.00	886.49	0.00	0.00	-46.58	-27.17
9.625in Casing Surface	17.00	889.00	872.00	17.00	886.49	0.00	0.00	-46.58	-27.17
8.75in Open Hole	889.00	7853.00	6964.00	886.49	7413.51	-46.58	-27.17	166.65	-255.97
7in Casing Intermediate	17.00	7741.00	7724.00	17.00	7405.16	0.00	0.00	55.13	-260.83
6.125in Open Hole	7741.00	11895.00	4154.00	7405.16	7415.08	55.13	-260.83	4200.14	-414.67



# Actual Wellpath Report

BARCLAY 29C-27HZ AWP

Page 5 of 6



## REFERENCE WELLPATH IDENTIFICATION

Operator	KERR-MCGEE OIL & GAS ONSHORE LP	Slot	SLOT#34 BARCLAY 29C-27HZ (616'FSL & 2012'FWL, SEC.27)
Area	COLORADO	Well	BARCLAY 29C-27HZ
Field	WELD COUNTY (KERR MCGEE)	Wellbore	BARCLAY 29C-27HZ AWB
Facility	SEC.27-T3N-R66W		

## TARGETS

Name	MD [ft]	TVD [ft]	North [ft]	East [ft]	Grid East [US ft]	Grid North [US ft]	Latitude	Longitude	Shape
BARCLAY 15-27 PAD SECTION LINES		2.00	-122.69	1412.32	3206570.73	1312996.29	40°11'24.745"N	104°45'38.092"W	polygon
BARCLAY 29C-27HZ BHL ON PLAT (460'FNL & 1695'FWL,SEC.27) REV-1		7367.00	4206.65	-348.01	3204774.69	1317310.71	40°12'07.528"N	104°46'00.775"W	point
BARCLAY 29C-27HZ BHL ON PLAT (460'FNL & 1695'FWL,SEC.27) REV-2		7419.00	4206.65	-348.01	3204774.69	1317310.71	40°12'07.528"N	104°46'00.775"W	point
BARCLAY 15-27 PAD HARDLINES (460' SETBACKS)		7424.00	-122.69	1412.32	3206570.73	1312996.29	40°11'24.745"N	104°45'38.092"W	polygon

## WELLPATH COMPOSITION - Ref Wellbore: BARCLAY 29C-27HZ AWB Ref Wellpath: BARCLAY 29C-27HZ AWP

Start MD [ft]	End MD [ft]	Positional Uncertainty Model	Log Name/Comment	Wellbore
17.00	839.00	NaviTrak (Standard)	BHI MWD SURVEYS 13 1/2" HOLE <144-839>	BARCLAY 29C-27HZ AWB
839.00	7711.00	NaviTrak (Standard)	BHI MWD SURVEYS 8 3/4" HOLE <961-7711>	BARCLAY 29C-27HZ AWB
7711.00	11794.00	NaviTrak (Standard)	BHI MWD SURVEYS 6 1/8" HOLE <7754-11794>	BARCLAY 29C-27HZ AWB
11794.00	11895.00	Blind Drilling (std)	Projection to bit	BARCLAY 29C-27HZ AWB



# Actual Wellpath Report

BARCLAY 29C-27HZ AWP

Page 6 of 6



REFERENCE WELLPATH IDENTIFICATION			
Operator	KERR-MCGEE OIL & GAS ONSHORE LP	Slot	SLOT#34 BARCLAY 29C-27HZ (616'FSL & 2012'FWL, SEC.27)
Area	COLORADO	Well	BARCLAY 29C-27HZ
Field	WELD COUNTY (KERR MCGEE)	Wellbore	BARCLAY 29C-27HZ AWB
Facility	SEC.27-T3N-R66W		

WELLPATH COMMENTS				
MD [ft]	Inclination [°]	Azimuth [°]	TVD [ft]	Comment
17.00	0.000	290.540	17.00	Tie-On
144.00	0.570	290.540	144.00	Begin BHI MWD Surveys
7741.00	82.234	2.467	7405.16	7" Casing Point
11794.00	87.900	351.800	7411.38	Last BHI MWD Survey
11895.00	87.900	351.800	7415.08	Projection to Bit