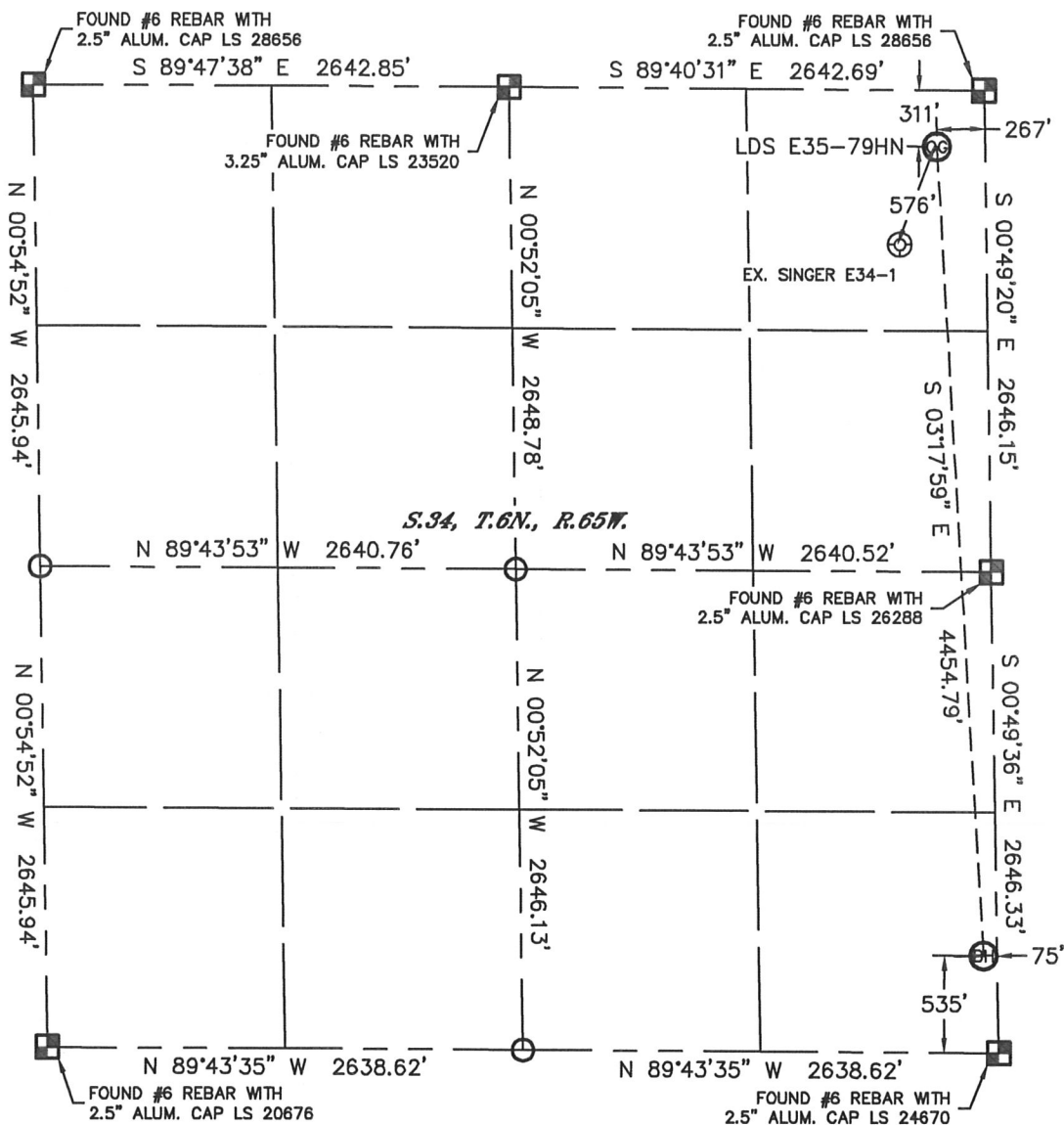


Lat40°, Inc. 1635 Foxtrail Drive, Suite 325 Loveland, CO 970-776-3321

# WELL LOCATION CERTIFICATE

THIS MAP DOES NOT REPRESENT A BOUNDARY SURVEY

SECTION: 34  
TOWNSHIP: 6N  
RANGE: 65W



In accordance with a request from Matthew Campbell with Noble Energy Inc. Lat40°, Inc. has determined the surface location of the LDS E35-79HN to be 311' from the NORTH line and 267' from the EAST line and the bottom hole to be 535' from the SOUTH line and 75' from the EAST line as measured at right angles from the section lines of Section 34, Township 6 North, Range 65 West of the Sixth Principal Meridian, County of Weld, State of Colorado.

I hereby state that this Well Location Certificate was prepared by me, or under my direct supervision, that the fieldwork was completed on 10/17/11, for and on behalf of Noble Energy Inc. That this is not a Land Survey Plat or an Improvement Survey Plat, and that it is not to be relied upon for establishment of fence, building, or other future improvement lines.

## NOTE:

- 1) Bearings shown are Grid Bearings of the Colorado State Plane Coordinate System, North Zone, North American Datum 1983/2007. The lineal dimensions as contained herein are based upon the "U.S. Survey Foot."
- 2) Ground elevations are based on an observed GPS elevation (NAVD 1988 DATUM).
- 3) NEAREST EXISTING WELL: SINGER E34-1, 576'
- 4) IMPROVEMENTS: See LOCATION DRAWING for all visible Improvements within 400' of disturbed area.
- 5) SURFACE USE: CROP LAND
- 6) INSTRUMENT OPERATOR: ADAM KELLY

## NOTE

According to Colorado law, you must commence any legal action based upon any defect in this W.L.C. within three years after you discover such defect. In no event, may any action based upon any defect in this survey be commenced more than ten years after the date of the certificate shown hereon. (13-80-105 C.R.S.)

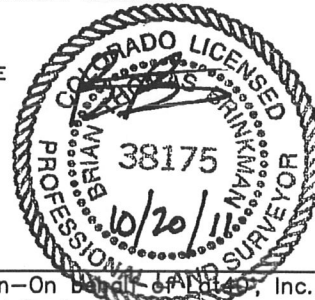
## LEGEND

- = ALIQUOT MONUMENT AS DESCRIBED
- = CALCULATED POSITION

SURFACE LOCATION  
LATITUDE: 40.44881°N  
LONGITUDE: 104.64077°W  
PDOP: 2.3  
ELEV: 4681'  
1/4, 1/4: NE1/4NE1/4

NEAREST PROPERTY LINE: 267' E

BOTTOM HOLE  
LATITUDE: 40.43680°N  
LONGITUDE: 104.64000°W



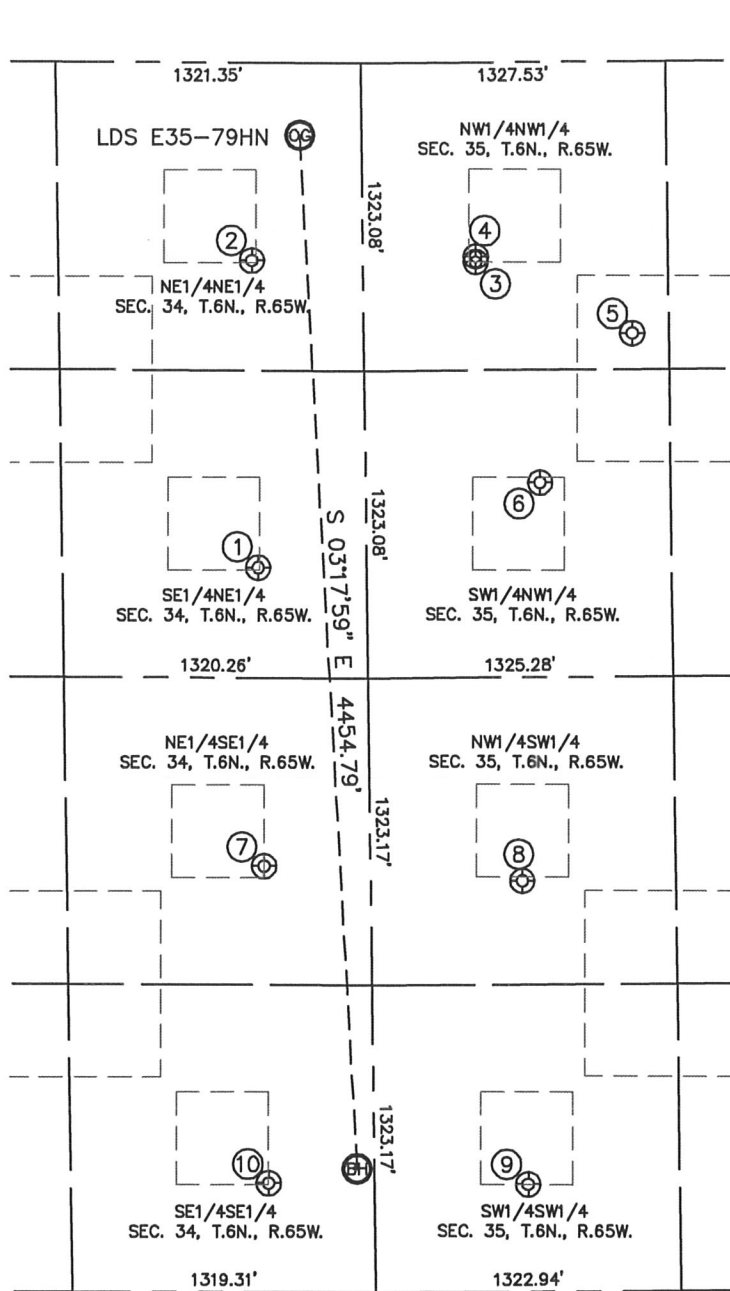
Brian T. Brinkman—On behalf of Lat40°, Inc.  
Colorado Licensed Professional  
Land Surveyor No. 38175

PROJECT#: 2011293

# SITE SKETCH

LDS E35-79HN

SECTION: 34  
TOWNSHIP: 6N  
RANGE: 65W



①

SINGER E34-8  
SE1/4NE1/4  
2171' FNL  
469' FEL  
LAT-40.44371°N  
LONG-104.64147°W  
PDOP: 1.2  
ELEV: 4669'

②

SINGER E34-1  
NE1/4NE1/4  
850' FNL  
481' FEL  
LAT-40.44734°N  
LONG-104.64153°W  
PDOP: 3.4  
ELEV: 4677'

③

CSU E35-04  
NW1/4NW1/4  
858' FNL  
490' FWL  
LAT-40.44730°N  
LONG-104.63804°W  
PDOP: 1.2  
ELEV: 4674'

④

CSU E35-3D  
NW1/4NW1/4  
835' FNL  
491' FWL  
LAT-40.44736°N  
LONG-104.63804°W  
PDOP: 1.1  
ELEV: 4674'

⑤

CSU E35-19  
NW1/4NW1/4  
1170' FNL  
1168' FWL  
LAT-40.44645°N  
LONG-104.63560°W  
PDOP: 1.8  
ELEV: 4671'

⑥

WARREN E35-05  
SW1/4NW1/4  
1809' FNL  
759' FWL  
LAT-40.44469°N  
LONG-104.63706°W  
PDOP: 1.8  
ELEV: 4668'

⑦

SINGER E34-9  
NE1/4SE1/4  
1835' FSL  
461' FEL  
LAT-40.44018°N  
LONG-104.64141°W  
PDOP: 2.6  
ELEV: 4666'

⑧

WARREN E35-12  
NW1/4SW1/4  
1770' FSL  
659' FWL  
LAT-40.43999°N  
LONG-104.63739°W  
PDOP: 5.0  
ELEV: 4663'

⑨

WARREN B35-13  
SW1/4SW1/4  
463' FSL  
666' FWL  
LAT-40.43640°N  
LONG-104.63734°W  
PDOP: 2.7  
ELEV: 4659'

⑩

SINGER E34-16  
SE1/4SE1/4  
470' FSL  
459' FEL  
LAT-40.43644°N  
LONG-104.64138°W  
PDOP: 5.1  
ELEV: 4661'

