

HALLIBURTON

WILLIAMS PRODUCTION RMT INC EBUSINE

**GM 444-31
GRAND VALLEY
Garfield County , Colorado**

Cement Surface Casing

23-Jan-2011

Post Job Summary

The Road to Excellence Starts with Safety

Sold To #: 300721		Ship To #: 2830658		Quote #:		Sales Order #: 7900043	
Customer: WILLIAMS PRODUCTION RMT INC EBUSINE				Customer Rep: Oaks, Rick			
Well Name: GM		Well #: 444-31		API/UWI #: 05-045-19433			
Field: GRAND VALLEY		City (SAP): PARACHUTE		County/Parish: Garfield		State: Colorado	
Lat: N 39.479 deg. OR N 39 deg. 28 min. 45.451 secs.				Long: W 108.148 deg. OR W -109 deg. 51 min. 8.96 secs.			
Contractor: H&P 278		Rig/Platform Name/Num: H&P 278					
Job Purpose: Cement Surface Casing							
Well Type: Development Well				Job Type: Cement Surface Casing			
Sales Person: KOHL, KYLE		Srvc Supervisor: LEIST, JAMES		MBU ID Emp #: 362787			
Job Personnel							
HES Emp Name	Exp Hrs	Emp #	HES Emp Name	Exp Hrs	Emp #	HES Emp Name	Exp Hrs
JAMISON, PRICE W		229155	JENSEN, SHANE Lynn		441759	LEIST, JAMES R	362787
MILLER, KEVIN Paul		443040	NICKLE, RYON		454759	STEELE, BENJAMIN F	458599
Equipment							
HES Unit #	Distance-1 way	HES Unit #	Distance-1 way	HES Unit #	Distance-1 way	HES Unit #	Distance-1 way
11259883	60	10995027-10567589	60	10998054-10867094	60		
Job Hours							
Date	On Location Hours	Operating Hours	Date	On Location Hours	Operating Hours	Date	On Location Hours
1-23-11	8	3					
TOTAL		Total is the sum of each column separately					
Job				Job Times			
Formation Name				Date	Time	Time Zone	
Formation Depth (MD) Top Bottom				Called Out	23 - Jan - 2011	09:00	MST
Form Type				On Location	23 - Jan - 2011	12:30	MST
Job depth MD 2731. ft				Job Started	23 - Jan - 2011	18:15	MST
Water Depth				Job Completed	23 - Jan - 2011	19:30	MST
Perforation Depth (MD) From To				Departed Loc	23 - Jan - 2011	22:00	MST
Well Data							
Description	New / Used	Max pressure psig	Size in	ID in	Weight lbm/ft	Thread	Grade
							Top MD ft Bottom MD ft Top TVD ft Bottom TVD ft
Tools and Accessories							
Type	Size	Qty	Make	Depth	Type	Size	Qty
Guide Shoe					Packer		
Float Shoe					Bridge Plug		
Float Collar					Retainer		
Insert Float							
Stage Tool							
Miscellaneous Materials							
Gelling Agt	Conc		Surfactant	Conc	Acid Type	Qty	Conc %
Treatment Fld	Conc		Inhibitor	Conc	Sand Type	Size	Qty
Fluid Data							
Stage/Plug #: 1							
Fluid #	Stage Type	Fluid Name	Qty	Qty uom	Mixing Density lbm/gal	Yield ft ³ /sk	Mix Fluid Gal/sk
							Rate bbl/min Total Mix Fluid Gal/sk

Stage/Plug #: 1									
Fluid #	Stage Type	Fluid Name	Qty	Qty uom	Mixing Density lbm/gal	Yield ft ³ /sk	Mix Fluid Gal/sk	Rate bbl/min	Total Mix Fluid Gal/sk
1	Water Spacer		20.00	bbl	8.4	.0	.0	.0	
2	VersaCem Lead Cement	VERSACEM (TM) SYSTEM (452010)	480.0	sacks	12.3	2.38	13.75		13.75
		13.75 Gal	FRESH WATER						
3	VersaCem Tail Cement	VERSACEM (TM) SYSTEM (452010)	160.0	sacks	12.8	2.11	11.75		11.75
		11.75 Gal	FRESH WATER						
4	Displacement Fluid		213	bbl	8.4	.0	.0	.0	
Calculated Values		Pressures		Volumes					
Displacement	213	Shut In: Instant		Lost Returns	0	Cement Slurry		Pad	
Top Of Cement	SUFRACE	5 Min		Cement Returns	100	Actual Displacement	213	Treatment	
Frac Gradient		15 Min		Spacers	20	Load and Breakdown		Total Job	
Rates									
Circulating		Mixing	8	Displacement	10	Avg. Job	9		
Cement Left In Pipe	Amount	45.86 ft	Reason	Shoe Joint					
Frac Ring # 1 @	ID	Frac ring # 2 @	ID	Frac Ring # 3 @	ID	Frac Ring # 4 @	ID		
The Information Stated Herein Is Correct				Customer Representative Signature					

The Road to Excellence Starts with Safety

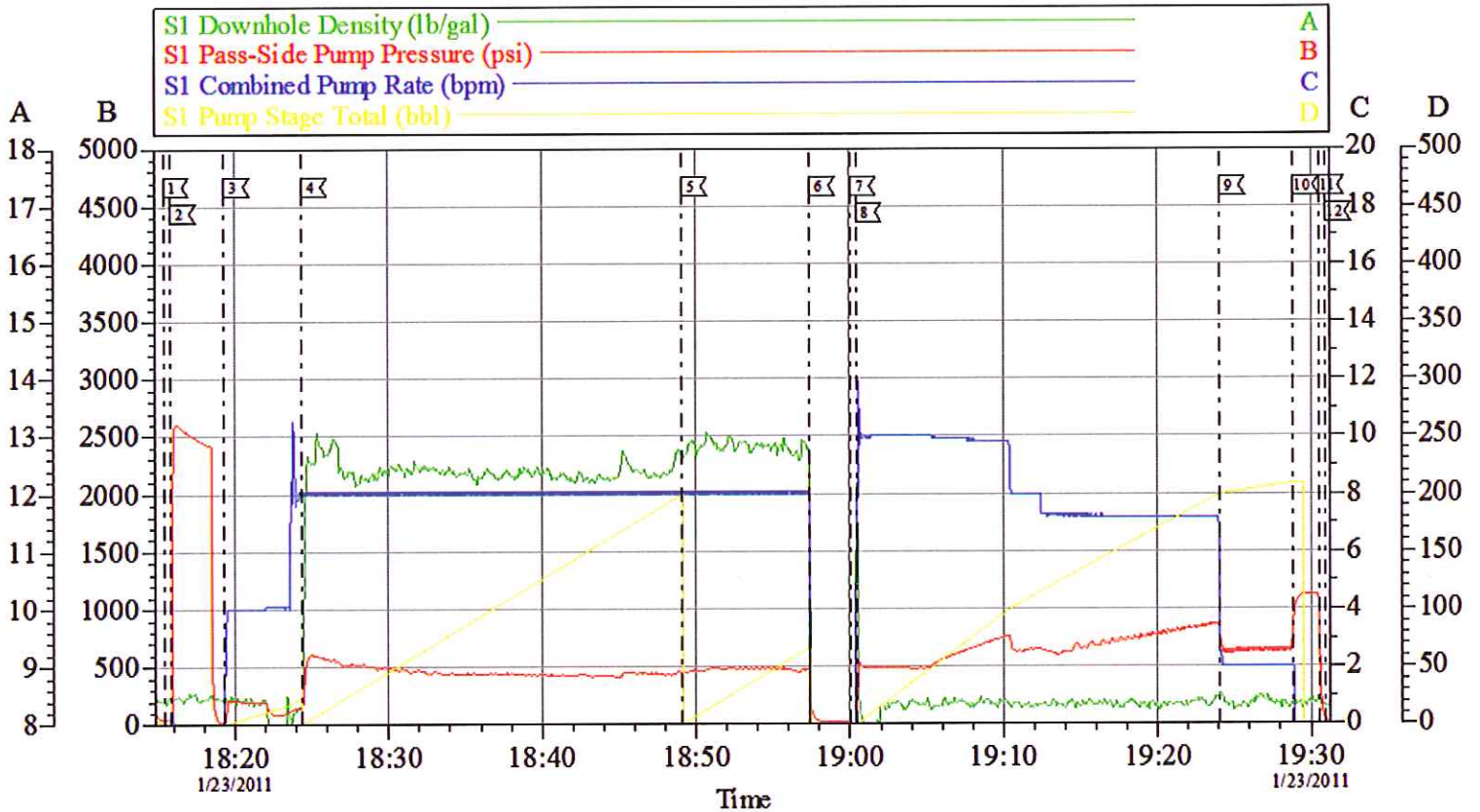
Sold To #: 300721	Ship To #: 2830658	Quote #:	Sales Order #: 7900043
Customer: WILLIAMS PRODUCTION RMT INC EBUSINE	Customer Rep: Oaks, Rick		
Well Name: GM	Well #: 444-31	API/UWI #: 05-045-19433	
Field: GRAND VALLEY	City (SAP): PARACHUTE	County/Parish: Garfield	State: Colorado
Legal Description:			
Lat: N 39.479 deg. OR N 39 deg. 28 min. 45.451 secs.		Long: W 108.148 deg. OR W -109 deg. 51 min. 8.96 secs.	
Contractor: H&P 278	Rig/Platform Name/Num: H&P 278		
Job Purpose: Cement Surface Casing	Ticket Amount:		
Well Type: Development Well	Job Type: Cement Surface Casing		
Sales Person: KOHL, KYLE	Srvc Supervisor: LEIST, JAMES	MBU ID Emp #: 362787	

Activity Description	Date/Time	Cht #	Rate bbl/ min	Volume bbl		Pressure psig		Comments
				Stage	Total	Tubing	Casing	
Call Out	01/23/2011 09:00							TP- 2731, TD-2771, S.J.-45.86, HOLE SIZE- 13.5, MUD#-9.9
Pre-Convoy Safety Meeting	01/23/2011 10:30							WITH ALL HES PERSONNEL
Crew Leave Yard	01/23/2011 11:00							WATER TEST: PH-6.5, CHLORIDE-0, SULFATE-<200, POT- 250, TDS-50
Arrive At Loc	01/23/2011 12:30							RIG CIRULATED FOR 1 HOUR PRIOR TO CMT JOB
Assessment Of Location Safety Meeting	01/23/2011 12:45							WITH ALL HES PERSONNEL
Pre-Rig Up Safety Meeting	01/23/2011 13:00							WITH ALL HES PERSONNEL
Rig-Up Completed	01/23/2011 15:00							
Start Job	01/23/2011 18:15							GOOD CIRULATION THROUGHOUT JOB, PIPE WORKED 10-15 FEET DURING JOB
Pressure Test	01/23/2011 18:15							2500 PSI
Pump Spacer 1	01/23/2011 18:19		4		20		146.0	FRESH WATER
Pump Lead Cement	01/23/2011 18:24		8		203		490.0	480 SKS, 12.3 PPG, 2.38 FT3/SK, 13.75 GAL/SK
Pre-Job Safety Meeting	01/23/2011 18:30							WITH ALL ON LOCATION PERSONNEL
Pump Tail Cement	01/23/2011 18:49		8		60.1		500.0	160 SKS, 12.8 PPG, 2.11 FT3/SK, 11.75 GAL/SK

Activity Description	Date/Time	Cht #	Rate bbl/min	Volume bbl		Pressure psig		Comments
				Stage	Total	Tubing	Casing	
Shutdown	01/23/2011 18:57							
Drop Top Plug	01/23/2011 19:00							AWAY
Pump Displacement	01/23/2011 19:00		10		213		877.0	FRESH WATER, 100 BBLS CMT TO SURFACE
Slow Rate	01/23/2011 19:24		2		203		620.0	TO BUMP PLUG
Bump Plug	01/23/2011 19:28		2		213		650.0	PLUG BUMPED
Check Floats	01/23/2011 19:30						1100.0	THE FLOATS ARE HOLDING
End Job	01/23/2011 19:30							
Pre-Rig Down Safety Meeting	01/23/2011 19:45							WITH ALL HES PERSONNEL
Rig-Down Completed	01/23/2011 21:30							
Pre-Convoy Safety Meeting	01/23/2011 21:45							WITH ALL HES PERSONNEL
Crew Leave Location	01/23/2011 22:00							
Comment	01/23/2011 22:00							THANKYOU FOR USING HALLIBURTON CEMENT, JAMES LEIST AND CREW

WILLIAMS

9 5/8 SURFACE CASING



Local Event Log			
1 START JOB	18:15:23	2 PRESSURE TEST	18:15:51
3 PUMP H2O SPACER	18:19:21	4 PUMP LEAD CMT	18:24:23
5 PUMP TAIL CMT	18:49:07	6 SHUTDOWN	18:57:25
7 DROP TOP PLUG	19:00:03	8 PUMP DISPLACEMENT	19:00:26
9 SLOW RATE	19:24:05	10 BUMP PLUG	19:28:53
11 CHECK FLOATS	19:30:31	12 END JOB	19:30:59

Customer: WILLIAMS	Job Date: 23-Jan-2011	Sales Order #: 7900043
Well Description: GM 444-31	Job Type: SURFACE	ADC Used: YES
Company Rep: RICKS OAKS	Cement Supervisor: JAMES LEIST	Elite #3 KEVIN MILLER

HALLIBURTON
OptiCem v6.3.4
23-Jan-11 19:52