

---

**WILLIAMS PRODUCTION RMT INC - EBUS**

---

**GM 334-23  
GRAND VALLEY  
Garfield County , Colorado**

**Cement Surface Casing**  
**23-Oct-2011**

**Post Job Report**

## The Road to Excellence Starts with Safety

Sold To #: 300721	Ship To #: 2884187	Quote #:	Sales Order #: 8542172
Customer: WILLIAMS PRODUCTION RMT INC - EBUS	Customer Rep: Hartl, Al		
Well Name: GM	Well #: 334-23	API/UWI #: 05-045-20483	
Field: GRAND VALLEY	City (SAP): PARACHUTE	County/Parish: Garfield	State: Colorado
Lat: N 39.506 deg. OR N 39 deg. 30 min. 22.5 secs.	Long: W 108.083 deg. OR W -109 deg. 55 min. 1.099 secs.		
Contractor: NABORS	Rig/Platform Name/Num: NABORS 576		
Job Purpose: Cement Surface Casing			
Well Type: Development Well	Job Type: Cement Surface Casing		
Sales Person: KOHL, KYLE	Srv Supervisor: NICKLE, RYON	MBU ID Emp #: 454759	

## Job Personnel

HES Emp Name	Exp Hrs	Emp #	HES Emp Name	Exp Hrs	Emp #	HES Emp Name	Exp Hrs	Emp #
BANKS, BRENT A	5.5	371353	NICKLE, RYON	5.5	454759	TRIPLETT, MICHEAL Anthony	5.5	447908
WINKER, STEVEN	5.5	478776						

## Equipment

HES Unit #	Distance-1 way	HES Unit #	Distance-1 way	HES Unit #	Distance-1 way	HES Unit #	Distance-1 way
10713212	60 mile	10871245	60 mile	10897849	60 mile	10951246	60 mile
11360881	60 mile						

## Job Hours

Date	On Location Hours	Operating Hours	Date	On Location Hours	Operating Hours	Date	On Location Hours	Operating Hours
10/23/2011	3.5	0	10/23/2011	2	1			

**TOTAL** Total is the sum of each column separately

## Job

Formation Name	Formation Depth (MD)	Top	Bottom	Form Type	Job depth MD	Water Depth	Perforation Depth (MD)	From	To
				BHST	990. ft				
					Job Depth TVD	4. ft			
					Wk Ht Above Floor				

## Job Times

Date	Time	Time Zone
22 - Oct - 2011	17:00	MST
22 - Oct - 2011	20:30	MST
23 - Oct - 2011	00:10	MST
23 - Oct - 2011	00:59	MST
23 - Oct - 2011	02:00	MST

## Well Data

Description	New / Used	Max pressure psig	Size in	ID in	Weight lbm/ft	Thread	Grade	Top MD ft	Bottom MD ft	Top TVD ft	Bottom TVD ft
-------------	------------	-------------------	---------	-------	---------------	--------	-------	-----------	--------------	------------	---------------

Sales/Rental/3<sup>rd</sup> Party (HES)

Description	Qty	Qty uom	Depth	Supplier
PLUG,CMTG,TOP,9 5/8,HWE,8.16 MIN/9.06 MA	1	EA		

## Tools and Accessories

Type	Size	Qty	Make	Depth	Type	Size	Qty	Make	Depth	Type	Size	Qty	Make
Guide Shoe					Packer					Top Plug			
Float Shoe					Bridge Plug					Bottom Plug			
Float Collar					Retainer					SSR plug set			
Insert Float										Plug Container			
Stage Tool										Centralizers			

## Miscellaneous Materials

Gelling Agt	Conc	Surfactant	Conc	Acid Type	Qty	Conc	%
Treatment Fld	Conc	Inhibitor	Conc	Sand Type	Size	Qty	

## Fluid Data

Stage/Plug #: 1									
Fluid #	Stage Type	Fluid Name	Qty	Qty uom	Mixing Density lbm/gal	Yield ft3/sk	Mix Fluid Gal/sk	Rate bbl/min	Total Mix Fluid Gal/sk

Stage/Plug #: 1										
Fluid #	Stage Type	Fluid Name	Qty	Qty uom	Mixing Density lbm/gal	Yield ft <sup>3</sup> /sk	Mix Fluid Gal/sk	Rate bbl/min	Total Mix Fluid Gal/sk	
1	Water Spacer		20.00	bbl	8.34			8		
2	Tail Cement	VERSACEM (TM) SYSTEM (452010)	265.0	sacks	12.8	2.11	11.75	8	11.75	
3	Displacement Fluid		73.70	bbl	8.34			10		
Calculated Values		Pressures		Volumes						
Displacement	73.7	Shut In: Instant		Lost Returns	0	Cement Slurry	99.6	Pad		
Top Of Cement	SURFACE	5 Min		Cement Returns	10	Actual Displacement	73.7	Treatment		
Frac Gradient		15 Min		Spacers	1	Load and Breakdown		Total Job	194	
Rates										
Circulating	8	Mixing	8	Displacement	10	Avg. Job	9			
Cement Left In Pipe	Amount	43.51 ft	Reason	Shoe Joint						
Frac Ring # 1 @	ID	Frac ring # 2 @	ID	Frac Ring # 3 @	ID	Frac Ring # 4 @	ID			
The Information Stated Herein Is Correct				Customer Representative Signature						

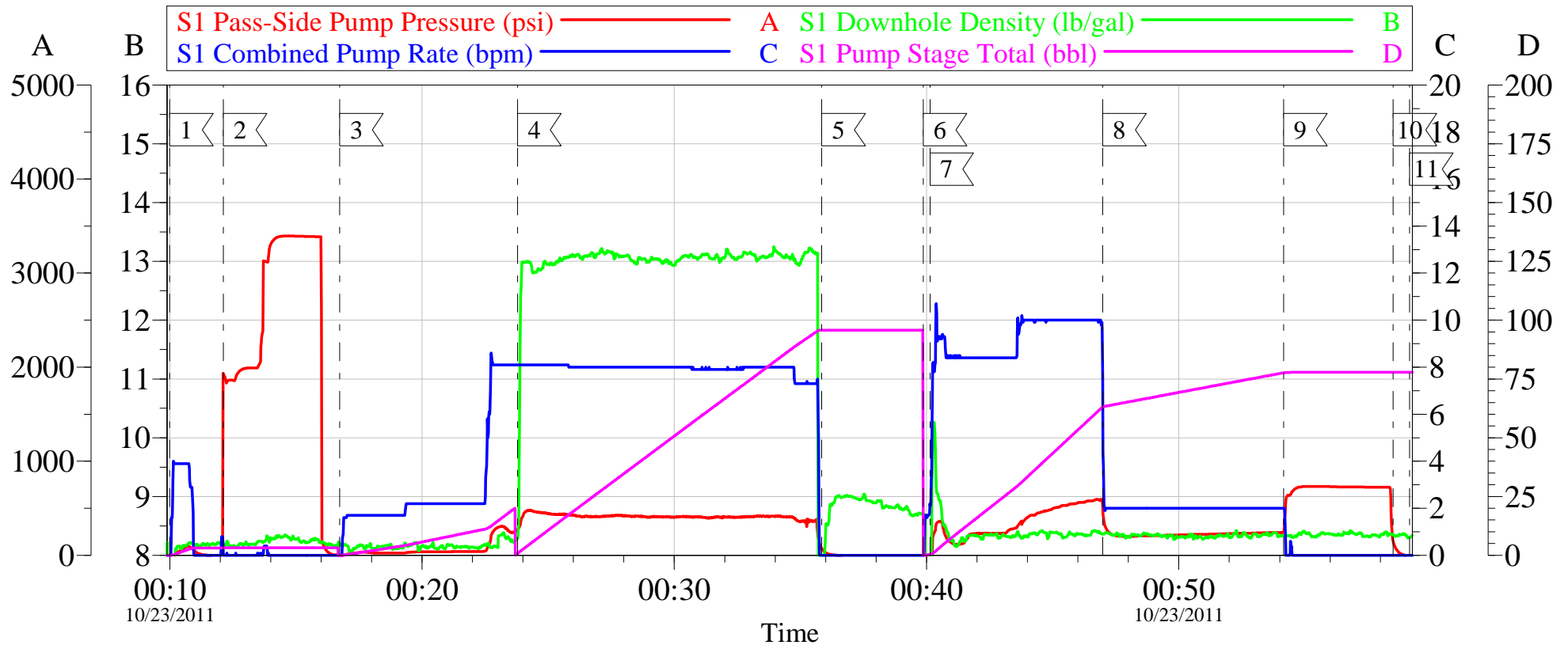
*The Road to Excellence Starts with Safety*

<b>Sold To #:</b> 300721	<b>Ship To #:</b> 2884187	<b>Quote #:</b>	<b>Sales Order #:</b> 8542172
<b>Customer:</b> WILLIAMS PRODUCTION RMT INC - EBUS		<b>Customer Rep:</b> Hartl, Al	
<b>Well Name:</b> GM	<b>Well #:</b> 334-23	<b>API/UWI #:</b> 05-045-20483	
<b>Field:</b> GRAND VALLEY	<b>City (SAP):</b> PARACHUTE	<b>County/Parish:</b> Garfield	<b>State:</b> Colorado
<b>Legal Description:</b>			
<b>Lat:</b> N 39.506 deg. OR N 39 deg. 30 min. 22.5 secs.		<b>Long:</b> W 108.083 deg. OR W -109 deg. 55 min. 1.099 secs.	
<b>Contractor:</b> NABORS		<b>Rig/Platform Name/Num:</b> NABORS 576	
<b>Job Purpose:</b> Cement Surface Casing			<b>Ticket Amount:</b>
<b>Well Type:</b> Development Well		<b>Job Type:</b> Cement Surface Casing	
<b>Sales Person:</b> KOHL, KYLE		<b>Srvc Supervisor:</b> NICKLE, RYON	<b>MBU ID Emp #:</b> 454759

Activity Description	Date/Time	Cht #	Rate bbl/min	Volume bbl		Pressure psig		Comments
				Stage	Total	Tubing	Casing	
Call Out	10/22/2011 17:00							
Pre-Convoy Safety Meeting	10/22/2011 18:55							
Crew Leave Yard	10/22/2011 19:00							
Arrive At Loc	10/22/2011 20:30							
Assessment Of Location Safety Meeting	10/22/2011 20:40							
Other	10/22/2011 22:30							SPOT EQUIPMENT, 1 RCM PUMP, 1 660
Pre-Rig Up Safety Meeting	10/22/2011 22:40							REVIEW JSA AND HAVE CREW SIGN
Rig-Up Equipment	10/22/2011 22:45							
Pre-Job Safety Meeting	10/23/2011 00:00							REVIEW JOB PROCEDURES AND SAFETY INFORMATION
Start Job	10/23/2011 00:10							TD:995, TP:980, SJ:43.51, MW:9.7, CASING: 9.625 32.3#, OH: 13.5,
Test Lines	10/23/2011 00:12						3410	TEST LINES, PRESSURE TEST PUMP AND LINE. STARTED AT 3410 PSI, ENDED AT 3401 PSI, LOST 9 PSI OVER 2 MIN
Pump Spacer	10/23/2011 00:16		8	20			262.0	WATER
Pump Tail Cement	10/23/2011 00:23		8	99.58			460.0	265 SACKS MIXED @ 12.8, 2.11 YIELD, 11.75 GAL/SACK

Activity Description	Date/Time	Cht #	Rate bbl/min	Volume bbl		Pressure psig		Comments
				Stage	Total	Tubing	Casing	
Shutdown	10/23/2011 00:35							
Drop Top Plug	10/23/2011 00:39							VERIFIED PLUG LEFT
Pump Displacement	10/23/2011 00:40		10	73.7			556.0	FRESH WATER, WASHED UP ON TOP PER COMPANY REP
Slow Rate	10/23/2011 00:46		2	63.7			220.0	SLOWED RATE LAST 10BBLs OF DISPLACEMENT
Bump Plug	10/23/2011 00:54			73.7			242.0	BUMP PLUG AND WENT 500PSI OVER
Check Floats	10/23/2011 00:58							FLOATS HELD
End Job	10/23/2011 00:59							HAD GOOD CIRCULATION THROUGHOUT JOB, RECEIVED CEMENT BACK WITH 65 BBLs OF DISPLACEMENT AWAY. RECEIVED 10 BBLs CEMENT TO SURFACE. NO ADDITIONAL HOURS ADDED. USED 80 LBS OF SUGAR.
Post-Job Safety Meeting (Pre Rig-Down)	10/23/2011 01:00							
Rig-Down Equipment	10/23/2011 01:15							
Pre-Convoy Safety Meeting	10/23/2011 01:55							
Crew Leave Location	10/23/2011 02:00							THANKS FOR USING HALLIBURTON RYON NICKLE AND CREW

# WILLIAMS SURFACE GM 334-23



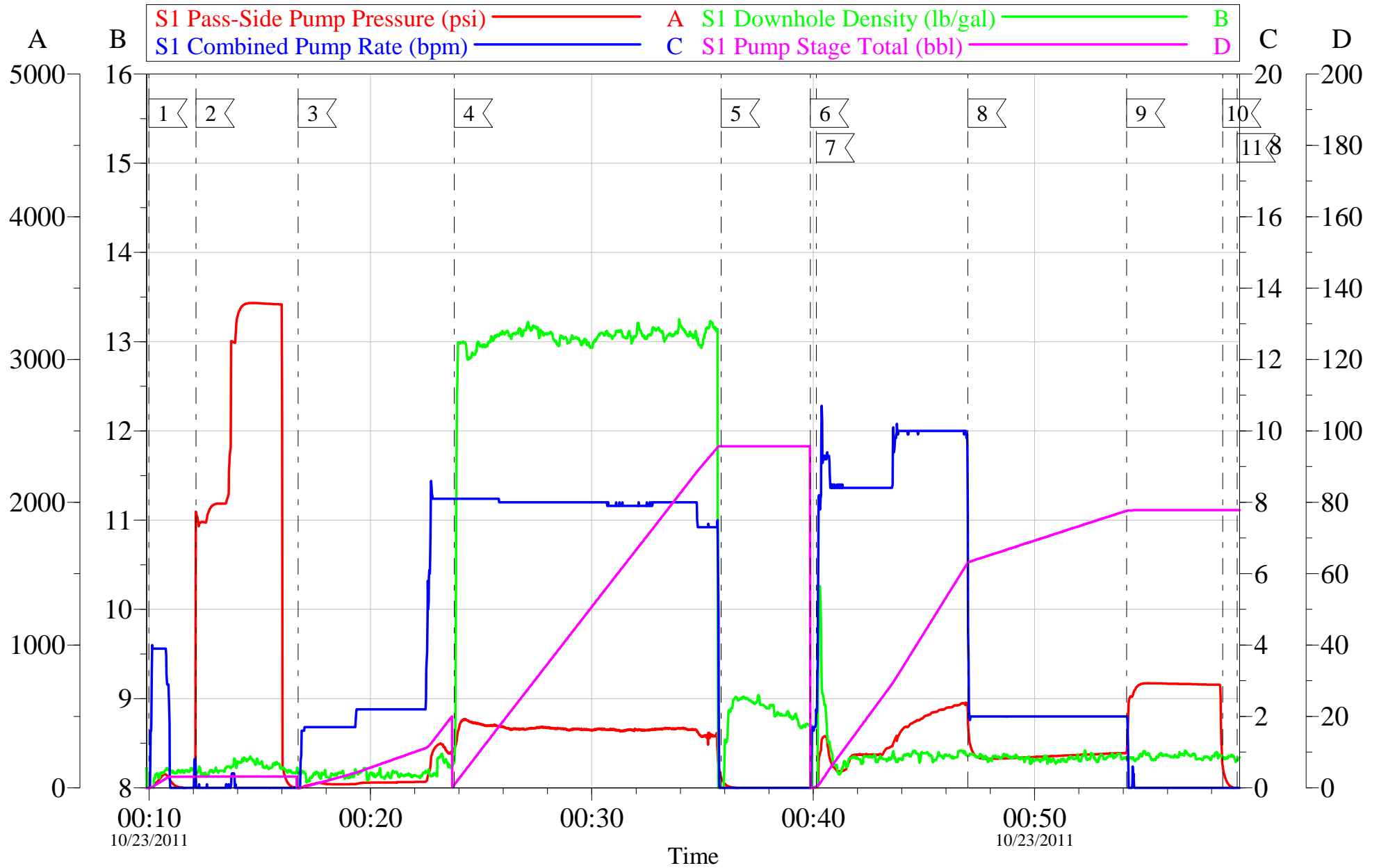
## Local Event Log

1	START JOB	00:10:00	2	PRESSURE TEST	00:12:08
3	START FRESH WATER SPACER	00:16:44	4	START TAIL CEMENT	00:23:47
5	SHUTDOWN	00:35:51	6	DROP PLUG	00:39:52
7	START DISPLACEMENT	00:40:08	8	SLOWRATE	00:46:59
9	BUMP PLUG	00:54:09	10	CHECK FLOATS	00:58:30
11	END JOB	00:59:09			

Customer: WILLIAMS	Job Date: 22-Oct-2011	Sales Order #: 8542172
Well Description: GM 334-23	JOB TYPE: SURFACE	COMPANY REP: B. KLATT
ADC USED: YES	SERVICE SUPERVISOR: RYON NICKLE	ELITE/OPERATER BRENT BANKS

OptiCem v6.4.9  
23-Oct-11 01:12

# WILLIAMS SURFACE GM 334-23



Customer: WILLIAMS	Job Date: 22-Oct-2011	Sales Order #: 8542172
Well Description: GM 334-23	JOB TYPE: SURFACE	COMPANY REP: B. KLATT
ADC USED: YES	SERVICE SUPERVISOR: RYON NICKLE	ELITE/OPERATER BRENT BANKS

OptiCem v6.4.9  
23-Oct-11 01:12

# HALLIBURTON

## Water Analysis Report

Company: WILLIAMS  
Submitted by: RYON NICKLE  
Attention: LAB  
Lease: GM  
Well #: 334-23

Date: 10/22/2011  
Date Rec.: 10/22/2011  
S.O.#: 8542171  
Job Type: SURFACE

Specific Gravity	MAX	1
pH	8	7
Potassium (K)	5000	450 Mg / L
Calcium (Ca)	500	250 Mg / L
Iron (FE2)	300	0 Mg / L
Chlorides (Cl)	3000	0 Mg / L
Sulfates (SO <sub>4</sub> )	1500	-200 Mg / L
Chlorine (Cl <sub>2</sub> )		0 Mg / L
Temp	40-80	55 Deg
Total Dissolved Solids		120 Mg / L

Respectfully: RYON NICKLE

Title: CEMENTING SUPERVISOR

Location: Grand Junction, CO



<b>Sales Order #:</b> 8542172	<b>Line Item:</b> 10	<b>Survey Conducted Date:</b> 10/23/2011
<b>Customer:</b> WILLIAMS PRODUCTION RMT INC - EBUS		<b>Job Type (BOM):</b> CMT SURFACE CASING BOM
<b>Customer Representative:</b> BRIAN KLATT		<b>API / UWI: (leave blank if unknown)</b> 05-045-20483
<b>Well Name:</b> GM		<b>Well Number:</b> 334-23
<b>Well Type:</b> Development Well	<b>Well Country:</b> United States of America	
<b>H2S Present:</b>	<b>Well State:</b> Colorado	<b>Well County:</b> Garfield

Dear Customer,

We hope that you were satisfied with the service quality of this job performed by Halliburton. It is the aim of our management and service personnel to deliver equipment and service of a standard unmatched in the service sector of the energy industry.

Please take the time to let us know if our performance met with your satisfaction. Please be as critical as possible to ensure we constantly improve our service. Your comments are of great value to us and are intended for the exclusive use of Halliburton.

### CUSTOMER SATISFACTION SURVEY

CATEGORY	CUSTOMER SATISFACTION RESPONSE	
Survey Conducted Date	The date the survey was conducted	10/23/2011
Survey Interviewer	The survey interviewer is the person who initiated the survey.	RYON NICKLE (HB22175)
Customer Participation	Did the customer participate in this survey? (Y/N)	Yes
Customer Representative	Enter the Customer representative name	BRIAN KLATT
HSE	Was our HSE performance satisfactory? Circle Y or N	Yes
Equipment	Were you satisfied with our Equipment? Circle Y or N	Yes
Personnel	Were you satisfied with our people? Circle Y or N	Yes
Customer Comment	Customer's Comment	
Job DVA	Did we provide job DVA above our normal service today? Circle Y or N	No
Time	Please enter hours in decimal format to nearest quarter hour.	
Other	Enter short text for other efficiencies gained.	
Customer Initials	Customer's Initials	
Please provide details	Please describe how the job efficiencies were gained.	

CUSTOMER SIGNATURE

<b>Sales Order #:</b> 8542172	<b>Line Item:</b> 10	<b>Survey Conducted Date:</b> 10/23/2011
<b>Customer:</b> WILLIAMS PRODUCTION RMT INC - EBUS		<b>Job Type (BOM):</b> CMT SURFACE CASING BOM
<b>Customer Representative:</b> BRIAN KLATT		<b>API / UWI: (leave blank if unknown)</b> 05-045-20483
<b>Well Name:</b> GM		<b>Well Number:</b> 334-23
<b>Well Type:</b> Development Well	<b>Well Country:</b> United States of America	
<b>H2S Present:</b>	<b>Well State:</b> Colorado	<b>Well County:</b> Garfield

### KEY PERFORMANCE INDICATORS

General	
<b>Survey Conducted Date</b>	10/23/2011
The date the survey was conducted	

Cementing KPI Survey	
<b>Type of Job</b>	0
Select the type of job. (Cementing or Non-Cementing)	
<b>Select the Maximum Deviation range for this Job</b>	Vertical
What is the highest deviation for the job you just completed? This may not be the maximum well deviation.	
<b>Total Operating Time (hours)</b>	3
Total Operating Hours Including Rig-up, Pumping, Rig-down. Enter in decimal format.	
<b>HSE Incident, Accident, Injury</b>	No
HSE Incident, Accident, Injury. This should be recordable incidents only.	
<b>Was the job purpose achieved?</b>	Yes
Was the job delivered correctly as per customer agreed design?	
<b>Operating Hours (Pumping Hours)</b>	1
Total number of hours pumping fluid on this job. Enter in decimal format.	
<b>Customer Non-Productive Rig Time (hrs)</b>	0
Lost time due to Halliburton in the start, execution, or completion of an ordered service or product, or delays in a follow-on service. Enter in decimal format. 0 if none.	
<b>Type of Rig Classification Job Was Performed</b>	Drilling Rig (Portable)
Type Of Rig (classification) Job Was Performed On	
<b>Number Of JSAs Performed</b>	7
Number Of Jsas Performed	
<b>Number of Unplanned Shutdowns</b>	0
Unplanned shutdown is when injection stops for any period of time.	
<b>Was this a Primary Cement Job (Yes / No)</b>	Yes

<b>Sales Order #:</b> 8542172	<b>Line Item:</b> 10	<b>Survey Conducted Date:</b> 10/23/2011
<b>Customer:</b> WILLIAMS PRODUCTION RMT INC - EBUS		<b>Job Type (BOM):</b> CMT SURFACE CASING BOM
<b>Customer Representative:</b> BRIAN KLATT		<b>API / UWI: (leave blank if unknown)</b> 05-045-20483
<b>Well Name:</b> GM		<b>Well Number:</b> 334-23
<b>Well Type:</b> Development Well	<b>Well Country:</b> United States of America	
<b>H2S Present:</b>	<b>Well State:</b> Colorado	<b>Well County:</b> Garfield

Primary Cement Job= Casing job, Liner job, or Tie-back job.	
<b>Did We Run Wiper Plugs?</b> Did We Run Top And Bottom Casing Wiper Plugs?	Top
<b>Mixing Density of Job Stayed in Designed Density Range (0-100%)</b> Density Range defined as +/- .20 ppg. Calculation: Total BBLs cement mixed at designed density divided by total BBLs of cement multiplied by 100	95
<b>Was Automated Density Control Used?</b> Was Automated Density Control (ADC) Used ?	Yes
<b>Pump Rate (percent) of Job Stayed At Designed Pump Rate</b> Pump Rate range defined as +/- 1bbl/min. Calculation: Total BBLs of fluid pumped at the designed rate divided by Total BBLs of fluid pumped, multiplied by 100	95
<b>Nbr of Remedial Sqz Jobs Rqd - Competition</b> Number Of Remedial Squeeze Jobs Required After Primary Job Performed By Competition	0
<b>Nbr of Remedial Plug Jobs Rqd - HES</b> Number Of Remedial Plug Jobs Needed After Primary Plug Pumped By HES	0
<b>Nbr of Remedial Sqz Jobs Rqd - HES</b> Number Of Remedial Squeeze Jobs Required After Primary Job Performed By HES	0