

HALLIBURTON

WILLIAMS PRODUCTION RMT INC - EBUS

SG 13-35

Garfield County , Colorado

Cement Surface Casing

18-Dec-2011

Job Site Documents

The Road to Excellence Starts with Safety

Sold To #: 300721	Ship To #: UNKNOWN	Quote #:	Sales Order #: 9133490
Customer: WILLIAMS PRODUCTION RMT INC - EBUS	Customer Rep: Wilson, W.C.		
Well Name: SG	Well #: 13-35	API/UWI #:	
Field:	City (SAP): PARACHUTE	County/Parish: Garfield	State: Colorado
Contractor: H&P Drilling	Rig/Platform Name/Num: H&P 278		
Job Purpose: Cement Surface Casing			
Well Type: Development Well	Job Type: Cement Surface Casing		
Sales Person: SCOTT, KYLE	Srv Supervisor: TRIPLETT, MICHEAL	MBU ID Emp #: 447908	

Job Personnel

HES Emp Name	Exp Hrs	Emp #	HES Emp Name	Exp Hrs	Emp #	HES Emp Name	Exp Hrs	Emp #
ENGBERG, KEVIN W	5	454218	MOAT, RYAN C	5	489025	STILLSON, ERIC W	5	393789
TRIPLETT, MICHEAL Anthony	5	447908						

Equipment

HES Unit #	Distance-1 way	HES Unit #	Distance-1 way	HES Unit #	Distance-1 way	HES Unit #	Distance-1 way
10001431	60 mile	10567589C	60 mile	10724643	60 mile	10951246	60 mile
10995027	60 mile						

Job Hours

Date	On Location Hours	Operating Hours	Date	On Location Hours	Operating Hours	Date	On Location Hours	Operating Hours
12/18/2011	5	1						
TOTAL			Total is the sum of each column separately					

Job

Job Times

Formation Name	Formation Depth (MD)	Top	Bottom	Called Out	Date	Time	Time Zone
Form Type	1000. ft	BHST	1000. ft	On Location	18 - Dec - 2011	11:30	MST
Job depth MD	1000. ft	Job Depth TVD	1000. ft	Job Started	18 - Dec - 2011	14:58	MST
Water Depth		Wk Ht Above Floor	4. ft	Job Completed	18 - Dec - 2011	15:49	MST
Perforation Depth (MD)	From	To		Departed Loc	18 - Dec - 2011	16:30	MST

Well Data

Description	New / Used	Max pressure psig	Size in	ID in	Weight lbm/ft	Thread	Grade	Top MD ft	Bottom MD ft	Top TVD ft	Bottom TVD ft
-------------	------------	-------------------	---------	-------	---------------	--------	-------	-----------	--------------	------------	---------------

Sales/Rental/3rd Party (HES)

Description	Qty	Qty uom	Depth	Supplier
PLUG,CMTG,TOP,9 5/8,HWE,8.16 MIN/9.06 MA	1	EA		

Tools and Accessories

Type	Size	Qty	Make	Depth	Type	Size	Qty	Make	Depth	Type	Size	Qty	Make
Guide Shoe					Packer					Top Plug			
Float Shoe					Bridge Plug					Bottom Plug			
Float Collar					Retainer					SSR plug set			
Insert Float										Plug Container			
Stage Tool										Centralizers			

Miscellaneous Materials

Gelling Agt	Conc	Surfactant	Conc	Acid Type	Qty	Conc	%
Treatment Fld	Conc	Inhibitor	Conc	Sand Type	Size	Qty	

Fluid Data

Stage/Plug #: 1

Fluid #	Stage Type	Fluid Name	Qty	Qty uom	Mixing Density lbm/gal	Yield ft ³ /sk	Mix Fluid Gal/sk	Rate bbl/min	Total Mix Fluid Gal/sk
---------	------------	------------	-----	---------	------------------------	---------------------------	------------------	--------------	------------------------

Stage/Plug #: 1

Stage/Plug #: 1									
Fluid #	Stage Type	Fluid Name	Qty	Qty uom	Mixing Density lbm/gal	Yield ft ³ /sk	Mix Fluid Gal/sk	Rate bbl/min	Total Mix Fluid Gal/sk
1	Fresh Water		20.00	bbl	8.33			4.0	
2	VersaCem Tail Cement	VERSACEM (TM) SYSTEM (452010)	285.0	sacks	12.8	2.11	11.75	8.0	11.75
	11.75 Gal	FRESH WATER							
3	Displacement Fluid		85.00	bbl	8.34			10.0	
Calculated Values		Pressures		Volumes					
Displacement	77.6	Shut In: Instant		Lost Returns	0	Cement Slurry	107.1	Pad	
Top Of Cement	SURFACE	5 Min		Cement Returns	17	Actual Displacement	77.6	Treatment	
Frac Gradient		15 Min		Spacers	20	Load and Breakdown		Total Job	208
Rates									
Circulating	8	Mixing	8	Displacement	10	Avg. Job	9		
Cement Left In Pipe	Amount	44.73 ft	Reason	Shoe Joint					
Frac Ring # 1 @	ID	Frac ring # 2 @	ID	Frac Ring # 3 @	ID	Frac Ring # 4 @	ID		
The Information Stated Herein Is Correct				Customer Representative Signature					

The Road to Excellence Starts with Safety

Sold To #: 300721	Ship To #: UNKNOWN	Quote #:	Sales Order #: 9133490
Customer: WILLIAMS PRODUCTION RMT INC - EBUS	Customer Rep: Wilson, W.C.		
Well Name: SG	Well #: 13-35	API/UWI #:	
Field:	City (SAP): PARACHUTE	County/Parish: Garfield	State: Colorado
Legal Description:			
Lat: N 0 deg. OR N 0 deg. 0 min. 0 secs.		Long: E 0 deg. OR E 0 deg. 0 min. 0 secs.	
Contractor: H&P Drilling	Rig/Platform Name/Num: H&P 278		
Job Purpose: Cement Surface Casing	Ticket Amount:		
Well Type: Development Well	Job Type: Cement Surface Casing		
Sales Person: SCOTT, KYLE	Srvc Supervisor: TRIPLETT, MICHEAL	MBU ID Emp #: 447908	

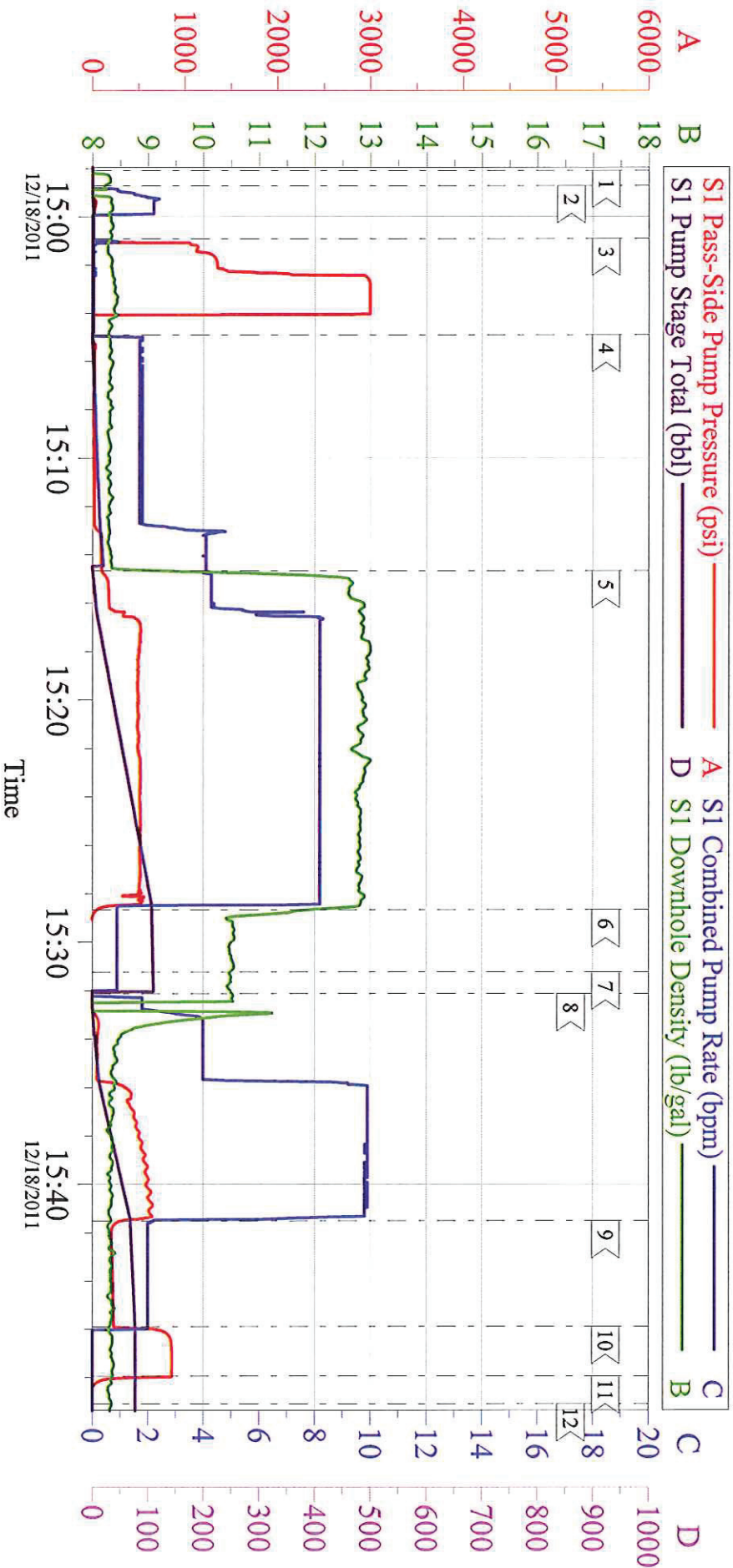
Activity Description	Date/Time	Cht #	Rate bbl/min	Volume bbl		Pressure psig		Comments
				Stage	Total	Tubing	Casing	
Call Out	12/18/2011 07:00							
Pre-Convoy Safety Meeting	12/18/2011 09:55							
Crew Leave Yard	12/18/2011 10:00							
Arrive At Loc	12/18/2011 11:30							CREW WAS STILL RUNNING CASING.
Assessment Of Location Safety Meeting	12/18/2011 11:35							
Other	12/18/2011 11:40							SPOT EQUIPMENT, 1 RCM PUMP TRUCK, 1 660
Pre-Rig Up Safety Meeting	12/18/2011 11:50							GO OVER JSA AND HAVE CREW SIGN.
Rig-Up Equipment	12/18/2011 11:55							
Pre-Job Safety Meeting	12/18/2011 14:35							GO OVER JOB PROCEDURES AND SAFETY INFORMATION.
Start Job	12/18/2011 14:58							TD:1045', TP:1030.57', SJ:44.7'3, MW:9.5 PPG, CASING: 9.625 32.3#, OH: 13.5"
Other	12/18/2011 14:59		2	2			40.0	FILL LINES PRIOR TO TESTING
Test Lines	12/18/2011 15:00						3000	PRESSURE TEST PUMPS AND LINES. STARTED AT 3015 PSI AND ENDED AT 3014 PSI, LOST 1 PSI IN TWO MINUTES.
Pump Spacer	12/18/2011 15:04		4	20			80.0	FRESHWATER

Cementing Job Log

Activity Description	Date/Time	Cht #	Rate bbl/min	Volume bbl		Pressure psig		Comments
				Stage	Total	Tubing	Casing	
Pump Tail Cement	12/18/2011 15:14		8	107.1			537.0	194 SACKS MIXED @ 12.6, 2.14 YIELD, 10.47 GAL/SACK
Shutdown	12/18/2011 15:28							
Drop Top Plug	12/18/2011 15:31							VERIFY PLUG LEFT. WASHED UP ON TOP OF PLUG PER COMPANY REP.
Pump Displacement	12/18/2011 15:32		10	77.6			625.0	FRESHWATER
Slow Rate	12/18/2011 15:41		2	67.6			224.0	SLOWED RATE LAST 10BBLs OF DISPLACEMENT
Bump Plug	12/18/2011 15:45						250.0	BUMP PLUG AND WENT 600PSI OVER
Check Floats	12/18/2011 15:47							FLOATS HELD
End Job	12/18/2011 15:49							HAD GOOD CIRCULATION THROUGHOUT JOB. GOT CEMENT BACK WITH 60 BBLs GONE ON DISPLACEMENT, GOT 17 BBLs OF CEMENT BACK TO SURFACE. NO ADDITIONAL HOURS, NO DERRICK CHARGE, 100#'s OF SUGAR USED.
Post-Job Safety Meeting (Pre Rig-Down)	12/18/2011 15:50							
Rig-Down Equipment	12/18/2011 16:00							
Pre-Convoy Safety Meeting	12/18/2011 16:25							
Crew Leave Location	12/18/2011 16:30							THANKS FOR USING HALLIBURTON MIKE TRIPLETT AND CREW

WILLIAMS - SG/13-15

9 5/8" SURFACE



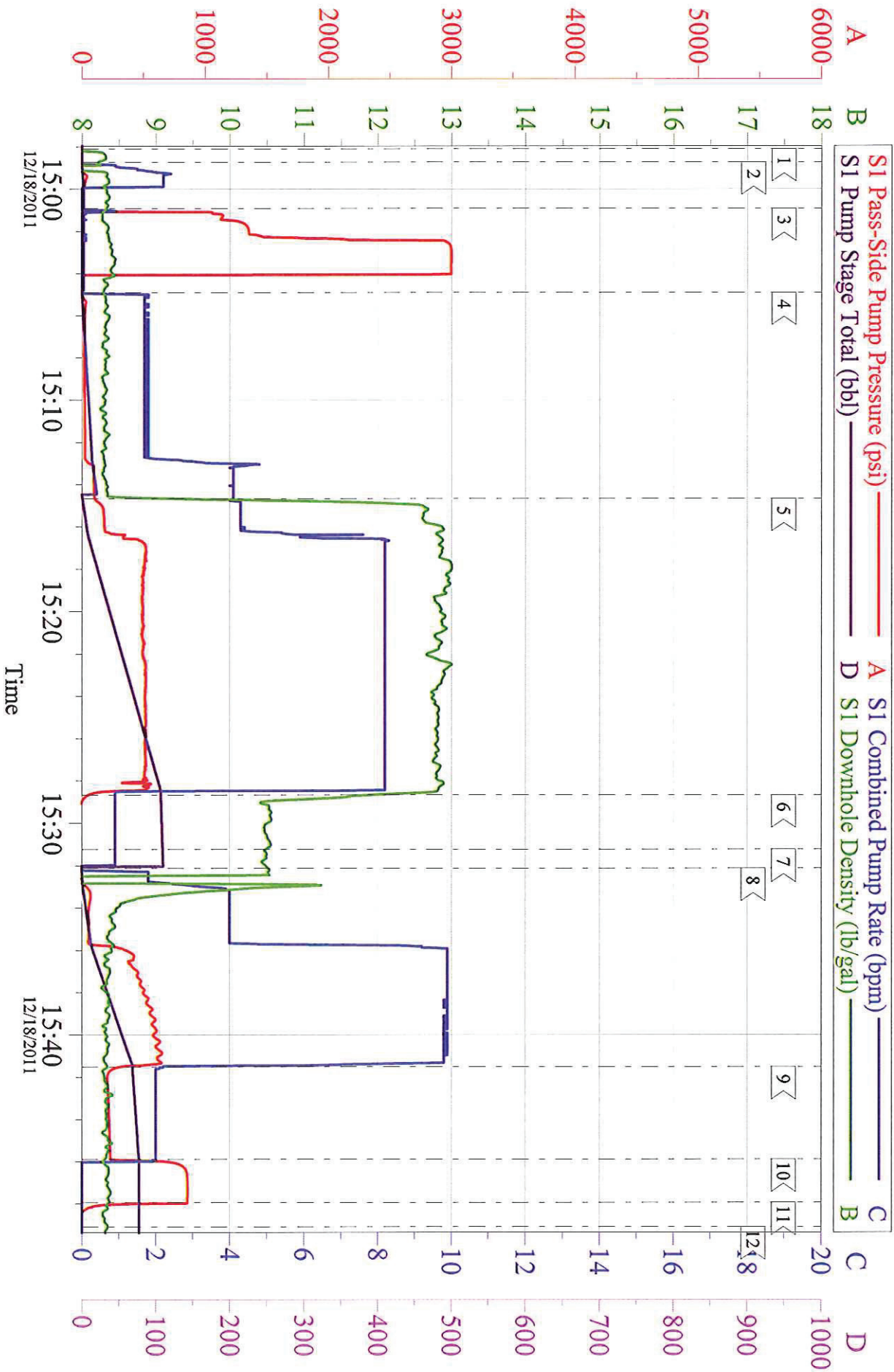
Customer: WILLIAMS
Well Description: SG 13-15
Company Rep: RICK OAKS

Job Date: 18-Dec-2011
Job Type: SURFACE
Cement Supervisor: MIKE TRIPLETT

Sales Order #: 9133490
ADC Used: YES
Elite #3: RYAN MOAT

WILLIAMS - SG/13-15

9 5/8" SURFACE



Customer: WILLIAMS
 Well Description: SG 13-15
 Company Rep: RICK OAKS

Job Date: 18-Dec-2011
 Job Type: SURFACE
 Cement Supervisor: MIKE TRIPLETT

Sales Order #: 9133490
 ADC Used: YES
 Elite #3: RYAN MOAT