

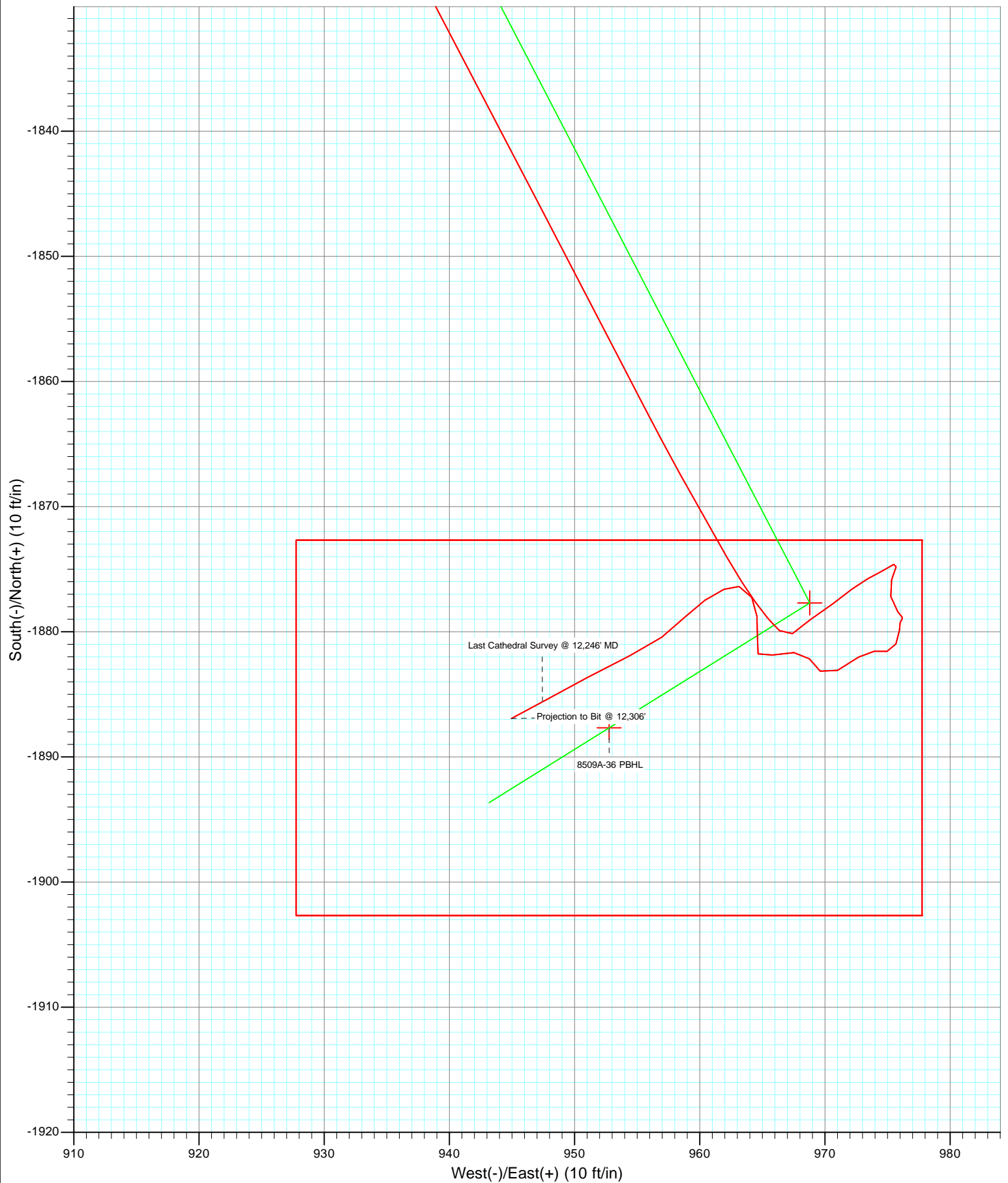
Azimuths to True North  
Magnetic North:  $10.46^\circ$

Magnetic Field  
Strength: 52332.3snT  
Dip Angle: 65.86°  
Date: 3/15/2011  
Model: IGRF2010

<p style="text-align: center;">DD            SGU 8509A-36 B36 496            105488 (SH), 115128 (MH), LR</p> <p style="text-align: center;">KBE @ 8374.0ft (Patterson 308)            North American Datum 1983            Well SGU 8509A-36 B36 496, True North</p>						
Type Target	Target 8509A-36 PBHL	Azimuth 153.22	Origin Type Slot	N/S 0.0	E/W 0.0	From TVD 0.0
Name	TVD 8798.0 11958.0	+N/-S -1887.7	+E/-W 952.8	Latitude 39° 39' 31.38 N	Longitude 108° 6' 36.50 W	



Project: Story Gulch  
Site: S36-T4S-R96W (B36 496)  
Well: SGU 8509A-36 B36 496  
Wellbore: DD  
Design: FINAL



## Survey Report

<b>Company:</b>	EnCana Oil & Gas (USA) Inc	<b>Local Co-ordinate Reference:</b>	Well SGU 8509A-36 B36 496
<b>Project:</b>	Story Gulch	<b>TVD Reference:</b>	KBE @ 8374.0ft (Patterson 308)
<b>Site:</b>	S36-T4S-R96W (B36 496)	<b>MD Reference:</b>	KBE @ 8374.0ft (Patterson 308)
<b>Well:</b>	SGU 8509A-36 B36 496	<b>North Reference:</b>	True
<b>Wellbore:</b>	DD	<b>Survey Calculation Method:</b>	Minimum Curvature
<b>Design:</b>	DD	<b>Database:</b>	EDM 5000.1 US Multi Users DB

<b>Project</b>	Story Gulch		
<b>Map System:</b>	US State Plane 1983	<b>System Datum:</b>	Mean Sea Level
<b>Geo Datum:</b>	North American Datum 1983		
<b>Map Zone:</b>	Colorado Central Zone		

Site		S36-T4S-R96W (B36 496)			
Site Position:		Northing:	1,677,422.27 ft	Latitude:	39° 39' 51.36 N
From:	Lat/Long	Easting:	2,264,394.80 ft	Longitude:	108° 6' 47.88 W
Position Uncertainty:	0.0 ft	Slot Radius:	13.200 in	Grid Convergence:	-1.65 °

Well	SGU 8509A-36 B36 496					
Well Position	+N/-S	0.0 ft	Northing:	1,677,290.18 ft	Latitude:	39° 39' 50.04 N
	+E/-W	0.0 ft	Easting:	2,264,328.02 ft	Longitude:	108° 6' 48.68 W
Position Uncertainty		0.0 ft	Wellhead Elevation:	ft	Ground Level:	8,352.0 ft

<b>Wellbore</b>	DD				
<b>Magnetics</b>	<b>Model Name</b>	<b>Sample Date</b>	<b>Declination (°)</b>	<b>Dip Angle (°)</b>	<b>Field Strength (nT)</b>
	IGRF2010	3/15/2011	10.46	65.86	52,332

<b>Design</b>	DD				
<b>Audit Notes:</b>					
<b>Version:</b>	1.0	<b>Phase:</b>	ACTUAL	<b>Tie On Depth:</b>	0.0
<b>Vertical Section:</b>	<b>Depth From (TVD)</b>	<b>+N/-S</b>	<b>+E/-W</b>	<b>Direction</b>	
	(ft)	(ft)	(ft)	(°)	
	0.0	0.0	0.0	153.22	

<b>Survey Program</b>	<b>Date</b>	3/29/2011			
<b>From (ft)</b>	<b>To (ft)</b>	<b>Survey (Wellbore)</b>	<b>Tool Name</b>	<b>Description</b>	
201.0	12,306.0	Survey #1 (DD)	MWD	Geolink MWD	

<b>Survey</b>										
<b>Measured Depth (ft)</b>	<b>Inclination (°)</b>	<b>Azimuth (°)</b>	<b>Vertical Depth (ft)</b>	<b>+N/-S (ft)</b>	<b>+E/-W (ft)</b>	<b>Vertical Section (ft)</b>	<b>Dogleg Rate (°/100ft)</b>	<b>Build Rate (°/100ft)</b>	<b>Formations / Comments</b>	
0.0	0.00	0.00	0.0	0.0	0.0	0.0	0.00	0.00		
201.0	0.80	29.40	201.0	1.2	0.7	-0.8	0.40	0.40		
231.0	0.70	34.00	231.0	1.6	0.9	-1.0	0.39	-0.33		
262.0	0.70	44.10	262.0	1.8	1.1	-1.1	0.40	0.00		
293.0	0.50	56.50	293.0	2.1	1.4	-1.2	0.77	-0.65		
323.0	0.50	62.60	323.0	2.2	1.6	-1.2	0.18	0.00		
353.0	0.40	112.10	353.0	2.2	1.8	-1.2	1.29	-0.33		
384.0	0.90	154.60	384.0	2.0	2.0	-0.8	2.14	1.61		
415.0	1.50	164.10	415.0	1.3	2.2	-0.2	2.03	1.94		
445.0	2.50	172.80	445.0	0.3	2.4	0.8	3.47	3.33		
476.0	3.50	172.60	475.9	-1.3	2.6	2.3	3.23	3.23		
507.0	4.40	166.70	506.8	-3.4	3.0	4.4	3.18	2.90		
538.0	5.50	168.90	537.7	-6.0	3.6	7.0	3.60	3.55		

## Survey Report

<b>Company:</b>	EnCana Oil & Gas (USA) Inc	<b>Local Co-ordinate Reference:</b>	Well SGU 8509A-36 B36 496
<b>Project:</b>	Story Gulch	<b>TVD Reference:</b>	KBE @ 8374.0ft (Patterson 308)
<b>Site:</b>	S36-T4S-R96W (B36 496)	<b>MD Reference:</b>	KBE @ 8374.0ft (Patterson 308)
<b>Well:</b>	SGU 8509A-36 B36 496	<b>North Reference:</b>	True
<b>Wellbore:</b>	DD	<b>Survey Calculation Method:</b>	Minimum Curvature
<b>Design:</b>	DD	<b>Database:</b>	EDM 5000.1 US Multi Users DB

### Survey

Measured Depth (ft)	Inclination (°)	Azimuth (°)	Vertical Depth (ft)	+N/-S (ft)	+E/-W (ft)	Vertical Section (ft)	Dogleg Rate (°/100ft)	Build Rate (°/100ft)	Formations / Comments
570.0	6.80	167.50	569.5	-9.4	4.3	10.3	4.09	4.06	
602.0	8.20	164.40	601.3	-13.4	5.3	14.4	4.55	4.37	
634.0	9.00	164.70	632.9	-18.0	6.6	19.1	2.50	2.50	
665.0	10.10	161.90	663.5	-22.9	8.1	24.1	3.85	3.55	
697.0	11.40	159.70	694.9	-28.6	10.0	30.0	4.26	4.06	
729.0	12.30	158.10	726.2	-34.7	12.4	36.6	2.99	2.81	
760.0	13.40	154.60	756.5	-41.0	15.2	43.5	4.35	3.55	
792.0	14.60	151.90	787.5	-47.9	18.7	51.2	4.27	3.75	
887.0	17.80	148.80	878.7	-70.9	31.8	77.6	3.49	3.37	
982.0	17.80	149.70	969.2	-95.9	46.7	106.6	0.29	0.00	
1,077.0	17.20	148.50	1,059.8	-120.4	61.4	135.1	0.74	-0.63	
1,172.0	16.30	146.30	1,150.7	-143.4	76.1	162.3	1.16	-0.95	
1,267.0	16.80	149.40	1,241.8	-166.4	90.5	189.3	1.07	0.53	
1,362.0	16.10	151.80	1,332.9	-189.8	103.7	216.1	1.03	-0.74	
1,457.0	15.10	151.40	1,424.4	-212.3	115.8	241.7	1.06	-1.05	
1,552.0	15.20	155.10	1,516.1	-234.4	127.0	266.5	1.02	0.11	
1,647.0	16.70	159.30	1,607.5	-258.5	137.1	292.5	1.99	1.58	
1,742.0	16.50	159.10	1,698.5	-283.9	146.7	319.5	0.22	-0.21	
1,837.0	16.00	158.10	1,789.7	-308.6	156.4	346.0	0.60	-0.53	
1,932.0	15.10	156.80	1,881.2	-332.1	166.2	371.4	1.02	-0.95	
2,028.0	15.70	154.30	1,973.8	-355.3	176.7	396.8	0.93	0.62	
2,123.0	16.80	151.90	2,065.0	-379.0	188.8	423.4	1.36	1.16	
2,218.0	16.10	149.90	2,156.1	-402.5	201.8	450.3	0.95	-0.74	
2,313.0	15.00	148.80	2,247.6	-424.4	214.8	475.7	1.20	-1.16	
2,408.0	15.20	150.90	2,339.3	-445.8	227.2	500.4	0.61	0.21	
2,503.0	16.30	151.70	2,430.8	-468.5	239.6	526.2	1.18	1.16	
2,599.0	15.50	151.40	2,523.1	-491.6	252.1	552.5	0.84	-0.83	
2,694.0	15.50	152.30	2,614.6	-514.0	264.1	577.8	0.25	0.00	
2,789.0	15.70	153.90	2,706.2	-536.7	275.7	603.4	0.50	0.21	
2,885.0	15.20	153.80	2,798.7	-559.7	286.9	629.0	0.52	-0.52	
2,980.0	14.30	152.90	2,890.5	-581.3	297.8	653.1	0.98	-0.95	
3,080.0	12.90	150.00	2,987.7	-602.0	309.0	676.6	1.56	-1.40	
3,172.0	13.60	156.50	3,077.3	-620.8	318.4	697.7	1.79	0.76	
3,263.0	16.00	155.50	3,165.3	-642.0	327.9	720.9	2.65	2.64	
3,355.0	15.40	156.30	3,253.8	-664.8	338.1	745.8	0.69	-0.65	
3,447.0	17.00	154.40	3,342.2	-688.1	348.8	771.4	1.83	1.74	
3,538.0	16.00	154.30	3,429.4	-711.4	360.0	797.3	1.10	-1.10	
3,630.0	16.60	150.60	3,517.7	-734.2	371.9	823.1	1.30	0.65	
3,722.0	15.50	150.60	3,606.2	-756.4	384.4	848.5	1.20	-1.20	
3,813.0	13.40	150.00	3,694.3	-776.1	395.7	871.2	2.31	-2.31	
3,905.0	16.10	151.00	3,783.2	-796.5	407.2	894.6	2.95	2.93	
3,996.0	14.90	149.50	3,870.9	-817.6	419.2	918.8	1.39	-1.32	
4,088.0	14.50	154.10	3,959.9	-838.2	430.3	942.2	1.34	-0.43	
4,179.0	15.90	154.30	4,047.7	-859.7	440.7	966.0	1.54	1.54	
4,271.0	14.90	152.60	4,136.4	-881.5	451.6	990.4	1.19	-1.09	
4,363.0	14.10	151.20	4,225.5	-901.9	462.4	1,013.5	0.95	-0.87	
4,454.0	14.30	156.20	4,313.7	-921.8	472.3	1,035.8	1.37	0.22	
4,546.0	15.80	154.30	4,402.6	-943.5	482.3	1,059.6	1.72	1.63	
4,637.0	14.60	154.20	4,490.4	-965.0	492.7	1,083.5	1.32	-1.32	
4,728.0	15.20	152.40	4,578.3	-985.9	503.2	1,106.9	0.83	0.66	
4,820.0	13.90	152.90	4,667.4	-1,006.4	513.8	1,130.0	1.42	-1.41	
4,912.0	14.60	150.80	4,756.5	-1,026.4	524.5	1,152.6	0.95	0.76	
5,003.0	13.90	150.30	4,844.7	-1,045.9	535.5	1,175.0	0.78	-0.77	

## Survey Report

<b>Company:</b>	EnCana Oil & Gas (USA) Inc	<b>Local Co-ordinate Reference:</b>	Well SGU 8509A-36 B36 496
<b>Project:</b>	Story Gulch	<b>TVD Reference:</b>	KBE @ 8374.0ft (Patterson 308)
<b>Site:</b>	S36-T4S-R96W (B36 496)	<b>MD Reference:</b>	KBE @ 8374.0ft (Patterson 308)
<b>Well:</b>	SGU 8509A-36 B36 496	<b>North Reference:</b>	True
<b>Wellbore:</b>	DD	<b>Survey Calculation Method:</b>	Minimum Curvature
<b>Design:</b>	DD	<b>Database:</b>	EDM 5000.1 US Multi Users DB

Survey									
Measured Depth (ft)	Inclination (°)	Azimuth (°)	Vertical Depth (ft)	+N/-S (ft)	+E/-W (ft)	Vertical Section (ft)	Dogleg Rate (°/100ft)	Build Rate (°/100ft)	Formations / Comments
5,095.0	15.10	154.50	4,933.8	-1,066.3	546.1	1,198.0	1.73	1.30	
5,186.0	14.00	155.40	5,021.9	-1,087.0	555.8	1,220.9	1.23	-1.21	
5,278.0	14.90	153.00	5,111.0	-1,107.7	565.8	1,243.8	1.17	0.98	
5,370.0	14.10	152.50	5,200.0	-1,128.2	576.4	1,266.9	0.88	-0.87	
5,462.0	14.20	154.50	5,289.2	-1,148.3	586.4	1,289.4	0.54	0.11	
5,553.0	15.50	153.10	5,377.2	-1,169.2	596.7	1,312.7	1.48	1.43	
5,645.0	14.50	154.20	5,466.1	-1,190.6	607.3	1,336.5	1.13	-1.09	
5,737.0	14.70	145.50	5,555.1	-1,210.5	618.9	1,359.6	2.39	0.22	
5,829.0	14.10	145.10	5,644.2	-1,229.4	631.9	1,382.2	0.66	-0.65	
5,921.0	16.00	149.40	5,733.1	-1,249.5	644.8	1,406.0	2.39	2.07	
6,012.0	15.00	148.80	5,820.8	-1,270.3	657.3	1,430.2	1.11	-1.10	
6,104.0	14.00	147.90	5,909.8	-1,289.9	669.4	1,453.2	1.11	-1.09	
6,196.0	14.30	154.80	5,999.0	-1,309.6	680.1	1,475.6	1.86	0.33	
6,287.0	13.30	155.50	6,087.4	-1,329.3	689.3	1,497.3	1.11	-1.10	
6,379.0	14.60	155.40	6,176.7	-1,349.5	698.5	1,519.5	1.41	1.41	
6,471.0	13.70	154.90	6,265.9	-1,369.9	707.9	1,542.0	0.99	-0.98	
6,563.0	13.60	153.90	6,355.3	-1,389.5	717.3	1,563.7	0.28	-0.11	
6,654.0	14.50	151.90	6,443.6	-1,409.2	727.4	1,585.8	1.12	0.99	
6,746.0	15.30	151.30	6,532.5	-1,430.0	738.6	1,609.4	0.89	0.87	
6,837.0	13.80	149.90	6,620.6	-1,449.9	749.8	1,632.2	1.69	-1.65	
6,929.0	12.70	148.20	6,710.1	-1,468.0	760.7	1,653.3	1.27	-1.20	
7,020.0	13.20	154.20	6,798.8	-1,485.8	770.5	1,673.6	1.58	0.55	
7,112.0	14.90	155.90	6,888.0	-1,506.1	779.9	1,695.9	1.90	1.85	
7,203.0	15.80	160.00	6,975.8	-1,528.4	788.9	1,719.9	1.55	0.99	
7,294.0	15.20	156.70	7,063.5	-1,551.0	797.8	1,744.1	1.17	-0.66	
7,386.0	14.50	157.30	7,152.4	-1,572.7	807.1	1,767.7	0.78	-0.76	
7,478.0	14.00	155.90	7,241.6	-1,593.5	816.0	1,790.3	0.66	-0.54	
7,569.0	13.80	156.60	7,329.9	-1,613.5	824.8	1,812.1	0.29	-0.22	
7,661.0	15.30	152.10	7,419.0	-1,634.3	834.9	1,835.2	2.04	1.63	
7,752.0	14.90	152.10	7,506.8	-1,655.3	846.0	1,858.9	0.44	-0.44	
7,844.0	14.30	153.10	7,595.9	-1,675.8	856.7	1,882.1	0.71	-0.65	
7,935.0	16.10	149.90	7,683.7	-1,696.8	868.1	1,905.9	2.18	1.98	
8,027.0	15.20	151.50	7,772.3	-1,718.4	880.2	1,930.7	1.08	-0.98	
8,119.0	14.30	151.60	7,861.2	-1,739.0	891.4	1,954.1	0.98	-0.98	
8,210.0	14.00	151.40	7,949.5	-1,758.6	902.0	1,976.4	0.33	-0.33	
8,302.0	13.60	152.20	8,038.8	-1,777.9	912.4	1,998.3	0.48	-0.43	
8,394.0	12.80	153.20	8,128.4	-1,796.6	922.0	2,019.3	0.90	-0.87	
8,485.0	12.20	153.50	8,217.2	-1,814.2	930.8	2,039.0	0.66	-0.66	
8,576.0	11.60	152.50	8,306.3	-1,830.9	939.4	2,057.8	0.70	-0.66	
8,667.0	9.80	152.30	8,395.7	-1,845.9	947.2	2,074.7	1.98	-1.98	
8,759.0	7.50	152.90	8,486.6	-1,858.1	953.6	2,088.5	2.50	-2.50	
8,851.0	5.40	151.30	8,578.0	-1,867.3	958.4	2,098.8	2.29	-2.28	
8,942.0	4.50	149.80	8,668.7	-1,874.1	962.2	2,106.7	1.00	-0.99	
9,034.0	2.50	139.80	8,760.5	-1,878.8	965.3	2,112.2	2.26	-2.17	
9,044.0	2.50	140.00	8,770.5	-1,879.1	965.6	2,112.6	0.09	0.00	
9,135.0	0.90	46.80	8,861.5	-1,880.1	967.4	2,114.4	2.97	-1.76	
9,227.0	1.40	55.10	8,953.5	-1,879.0	968.9	2,114.0	0.57	0.54	
9,319.0	1.30	54.60	9,045.4	-1,877.8	970.6	2,113.7	0.11	-0.11	
9,410.0	1.10	50.50	9,136.4	-1,876.6	972.1	2,113.3	0.24	-0.22	
9,502.0	0.80	64.60	9,228.4	-1,875.8	973.4	2,113.2	0.41	-0.33	
9,593.0	0.80	59.60	9,319.4	-1,875.2	974.5	2,113.1	0.08	0.00	
9,685.0	0.60	60.10	9,411.4	-1,874.6	975.5	2,113.1	0.22	-0.22	
9,777.0	0.60	207.20	9,503.4	-1,874.8	975.7	2,113.3	1.25	0.00	

## Survey Report

<b>Company:</b>	EnCana Oil & Gas (USA) Inc	<b>Local Co-ordinate Reference:</b>	Well SGU 8509A-36 B36 496
<b>Project:</b>	Story Gulch	<b>TVD Reference:</b>	KBE @ 8374.0ft (Patterson 308)
<b>Site:</b>	S36-T4S-R96W (B36 496)	<b>MD Reference:</b>	KBE @ 8374.0ft (Patterson 308)
<b>Well:</b>	SGU 8509A-36 B36 496	<b>North Reference:</b>	True
<b>Wellbore:</b>	DD	<b>Survey Calculation Method:</b>	Minimum Curvature
<b>Design:</b>	DD	<b>Database:</b>	EDM 5000.1 US Multi Users DB

Survey									
Measured Depth (ft)	Inclination (°)	Azimuth (°)	Vertical Depth (ft)	+N/-S (ft)	+E/-W (ft)	Vertical Section (ft)	Dogleg Rate (°/100ft)	Build Rate (°/100ft)	Formations / Comments
9,868.0	0.80	193.60	9,594.4	-1,875.8	975.3	2,114.1	0.28	0.22	
9,960.0	0.90	173.60	9,686.4	-1,877.2	975.3	2,115.3	0.34	0.11	
10,051.0	0.90	136.30	9,777.4	-1,878.4	975.8	2,116.6	0.63	0.00	
10,143.0	0.20	255.20	9,869.4	-1,879.0	976.2	2,117.3	1.10	-0.76	
10,235.0	0.30	182.20	9,961.4	-1,879.3	976.0	2,117.5	0.33	0.11	
10,326.0	0.50	187.20	10,052.4	-1,879.9	976.0	2,118.0	0.22	0.22	
10,418.0	0.90	198.70	10,144.4	-1,881.0	975.7	2,118.8	0.46	0.43	
10,510.0	0.60	280.50	10,236.3	-1,881.6	975.0	2,119.0	1.10	-0.33	
10,601.0	0.70	262.40	10,327.3	-1,881.6	973.9	2,118.6	0.25	0.11	
10,693.0	1.00	240.10	10,419.3	-1,882.0	972.7	2,118.4	0.48	0.33	
10,784.0	1.50	236.20	10,510.3	-1,883.1	971.0	2,118.6	0.56	0.55	
10,876.0	0.90	328.40	10,602.3	-1,883.1	969.6	2,118.0	1.93	-0.65	
10,967.0	0.80	306.70	10,693.3	-1,882.2	968.8	2,116.8	0.37	-0.11	
11,059.0	0.90	278.00	10,785.3	-1,881.7	967.5	2,115.8	0.47	0.11	
11,151.0	1.30	254.20	10,877.3	-1,881.9	965.8	2,115.2	0.65	0.43	
11,242.0	0.50	338.80	10,968.3	-1,881.8	964.7	2,114.6	1.48	-0.88	
11,334.0	1.10	6.00	11,060.2	-1,880.5	964.6	2,113.4	0.75	0.65	
11,426.0	1.10	351.30	11,152.2	-1,878.8	964.6	2,111.9	0.31	0.00	
11,517.0	0.90	336.50	11,243.2	-1,877.2	964.2	2,110.3	0.36	-0.22	
11,618.0	0.80	280.50	11,344.2	-1,876.4	963.1	2,109.1	0.79	-0.10	
11,700.0	1.00	243.30	11,426.2	-1,876.6	961.9	2,108.7	0.74	0.24	
11,792.0	1.20	237.20	11,518.2	-1,877.5	960.4	2,108.8	0.25	0.22	
11,883.0	1.50	223.90	11,609.1	-1,878.9	958.8	2,109.3	0.47	0.33	
11,975.0	1.50	234.10	11,701.1	-1,880.4	957.0	2,109.9	0.29	0.00	
12,066.0	2.20	244.20	11,792.1	-1,881.9	954.4	2,110.1	0.85	0.77	
12,158.0	2.60	241.40	11,884.0	-1,883.7	951.0	2,110.1	0.45	0.43	
12,246.0	2.70	241.70	11,971.9	-1,885.6	947.4	2,110.2	0.11	0.11	Last Cathedral Survey @ 12,246' MD Projection to Bit @ 12,306'
12,306.0	2.70	241.70	12,031.8	-1,886.9	945.0	2,110.3	0.00	0.00	

Targets									
Target Name	Dip Angle (°)	Dip Dir. (°)	TVD (ft)	+N/-S (ft)	+E/-W (ft)	Northing (ft)	Easting (ft)	Latitude	Longitude
8509A-36 TOG	0.00	0.00	8,798.0	-1,877.7	968.8	1,675,385.39	2,265,242.41	39° 39' 31.48 N	108° 6' 36.30 W
- hit/miss target									
- Shape									
- survey misses target center by 3.3ft at 9071.5ft MD (8798.0 TVD, -1879.9 N, 966.3 E)									
- Point									
8509A-36 PBHL	0.00	0.00	11,958.0	-1,887.7	952.8	1,675,375.88	2,265,226.10	39° 39' 31.38 N	108° 6' 36.50 W
- hit/miss target									
- Shape									
- survey misses target center by 5.3ft at 12231.9ft MD (11957.9 TVD, -1885.3 N, 948.0 E)									
- Rectangle (sides W30.0 H50.0 D0.0)									

Survey Annotations				
Measured Depth (ft)	Vertical Depth (ft)	Local Coordinates		Comment
		+N/-S (ft)	+E/-W (ft)	
12,246.0	11,971.9	-1,885.6	947.4	Last Cathedral Survey @ 12,246' MD
12,306.0	12,031.8	-1,886.9	945.0	Projection to Bit @ 12,306'

Checked By: _____	Approved By: _____	Date: _____
-------------------	--------------------	-------------