

1911 GLO Brass Cap,
1.0' High
Lat: 40.456239°
Long: 107.543850°

T6N, R90W, 6th P.M.

QUICKSILVER RESOURCES, INC.

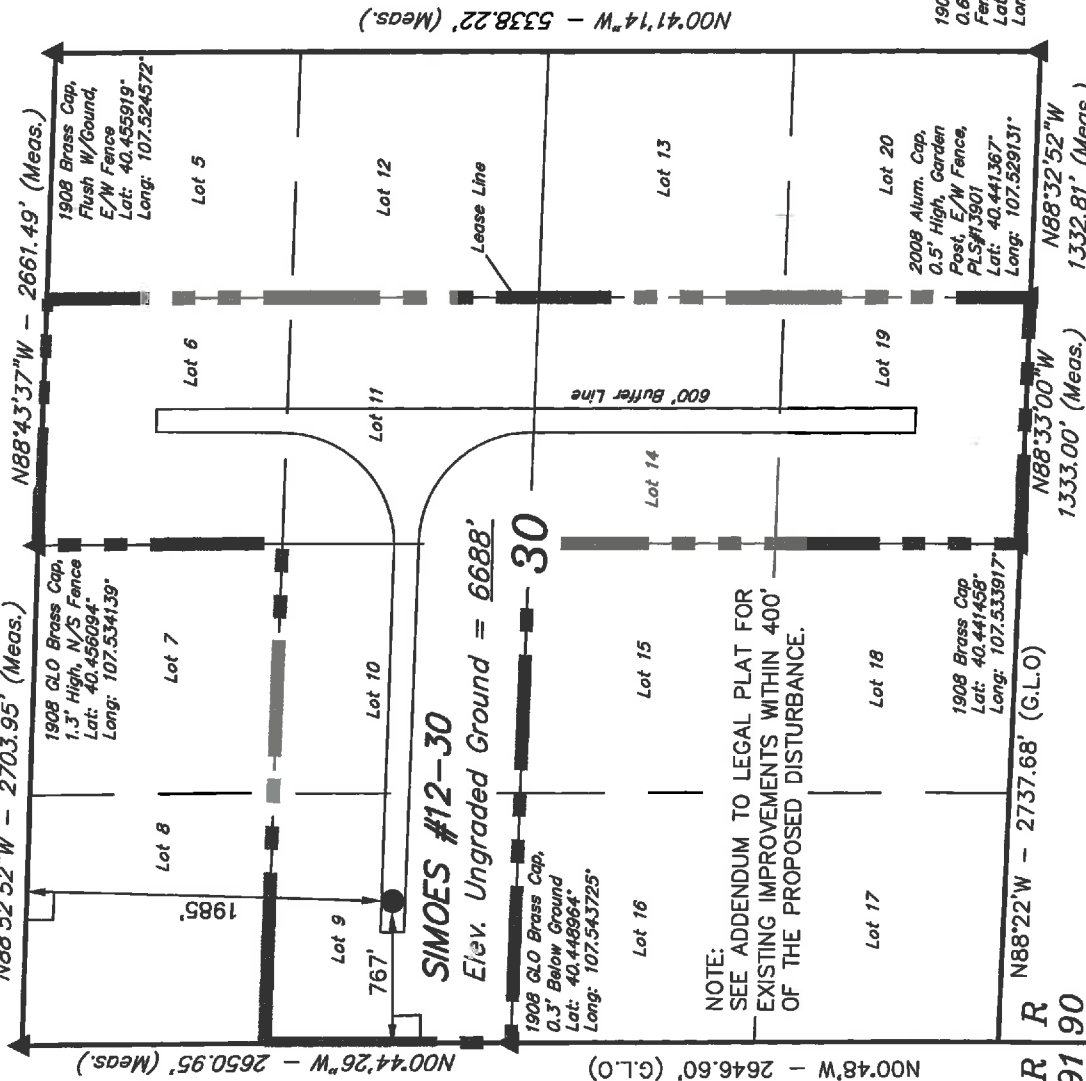
Well location, SIMOES #12-30, located as shown in Lot 9 of Section 30, T6N, R90W, 6th P.M., Moffat County, Colorado.

BASIS OF ELEVATION

SPOT ELEVATION AT A ROAD INTERSECTION IN THE NORTH 1/2 OF SECTION 19, T6N, R90W, 6th P.M., TAKEN FROM THE CASTOR GULCH QUADRANGLE, COLORADO, MOFFAT COUNTY, 7.5 MINUTE QUAD. (TOPOGRAPHIC MAP) PUBLISHED BY THE UNITED STATES DEPARTMENT OF THE INTERIOR, GEOLOGICAL SURVEY. SAID ELEVATION IS MARKED AS BEING 6411 FEET.

BASIS OF BEARINGS

BASIS OF BEARINGS IS A G.P.S. OBSERVATION.



NOTE:
SEE ADDENDUM TO LEGAL PLAT FOR
EXISTING IMPROVEMENTS WITHIN 400'
OF THE PROPOSED DISTURBANCE.

N00°41'14\"W - 5338.22' (Meas.)

SIMOES #12-30
Elev. Ungraded Ground = 6688'

N00°48'W - 2646.60' (G.L.O)

1908 Brass Cap,
0.6' High, E/W
Fence
Lat: 40.441272°
Long: 107.524344°

2008 Alum. Cap,
0.5' High, Garden
Post, E/W Fence,
PLS#15901
Lat: 40.441367°
Long: 107.529131°

1908 Brass Cap,
0.3' Below Ground
Lat: 40.441458°
Long: 107.533917°

N88°33'00\"W
1333.00' (Meas.)

N88°32'52\"W
1332.81' (Meas.)

N88°43'37\"W - 2661.49' (Meas.)

R 91 W
R 90 W

REVISED: 03-16-12

UTAH ENGINEERING & LAND SURVEYING
85 SOUTH 200 EAST - VERNAL, UTAH 84078
(435) 789-1017

LEGEND:

- └─ = 90° SYMBOL
- = PROPOSED WELL HEAD.
- ▲ = SECTION CORNERS LOCATED.

PDOP = 1.2	
NAD 83 (SURFACE LOCATION)	
LATITUDE = 40°27'02.70\"	(40.450750)
LONGITUDE = 107°32'27.60\"	(107.541000)
NAD 27 (SURFACE LOCATION)	
LATITUDE = 40°27'02.80\"	(40.450778)
LONGITUDE = 107°32'25.37\"	(107.540381)
STATE PLANE NAD 83	
N: 1413585.17	E: 2432036.05
STATE PLANE NAD 27	
N: 413584.16	E: 1432193.72

SCALE

1" = 1000'

PARTY

G.M. T.B. S.F.

WEATHER

COLD

DATE SURVEYED:
02-29-12

DATE DRAWN:
03-07-12

REFERENCES
G.L.O. PLAT

FILE

QUICKSILVER RESOURCES, INC.



CERTIFICATE

THIS IS TO CERTIFY THAT THE ABOVE PLAT WAS PREPARED FROM FIELD NOTES OF ACTUAL SURVEYS MADE BY ME OR UNDER MY SUPERVISION AND THAT THE SAME ARE TRUE AND CORRECT TO THE BEST OF MY KNOWLEDGE AND BELIEF.

REGISTERED LAND SURVEYOR
STATE OF COLORADO
03-16-12

T6N, R90W, 6th P.M.

QUICKSILVER RESOURCES, INC.

Well location, SIMOES #12-30, located as shown in Lot 9 of Section 30, T6N, R90W, 6th P.M., Moffat County, Colorado.

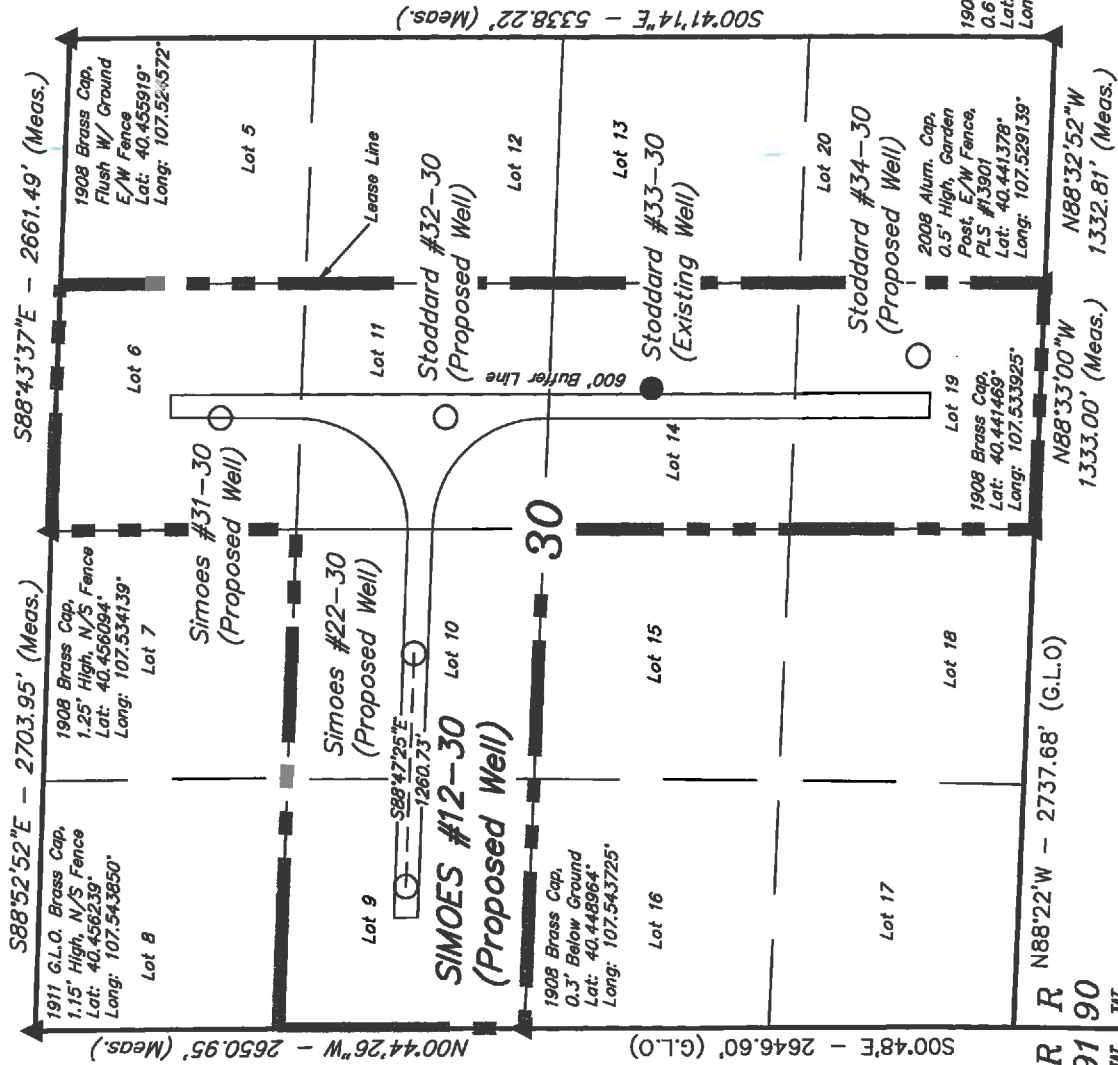


EXHIBIT "A"



CERTIFICATE

THIS IS TO CERTIFY THAT THE ABOVE PLAT WAS PREPARED FROM FIELD NOTES OF ACTUAL SURVEYS MADE BY ME OR UNDER MY SUPERVISION AND THAT THE SAME ARE TRUE AND CORRECT TO THE BEST OF MY KNOWLEDGE AND BELIEF.

REGISTERED LAND SURVEYOR
REGISTRATION NO. 17432
STATE OF COLORADO
03-16-12

UNTAH ENGINEERING & LAND SURVEYING	
85 SOUTH 200 EAST - VERNAL, UTAH 84078	
(435) 789-1017	
SCALE 1" = 1000'	DATE SURVEYED: 02-29-12
PARTY G.M. T.B. S.F.	DATE DRAWN: 03-16-12
WEATHER COOL	REFERENCES G.L.O. PLAT
FILE QUICKSILVER RESOURCES, INC.	

LEGEND:

- = 90° SYMBOL
- = PROPOSED WELL HEAD.
- ▲ = SECTION CORNERS LOCATED.

QUICKSILVER RESOURCES, INC.

ADDENDUM TO LEGAL PLAT FOR

SIMOES #12-30

SECTION 30, T6N, R90W, 6th P.M.

1985' FNL 767' FWL



SCALE: 1" = 200'

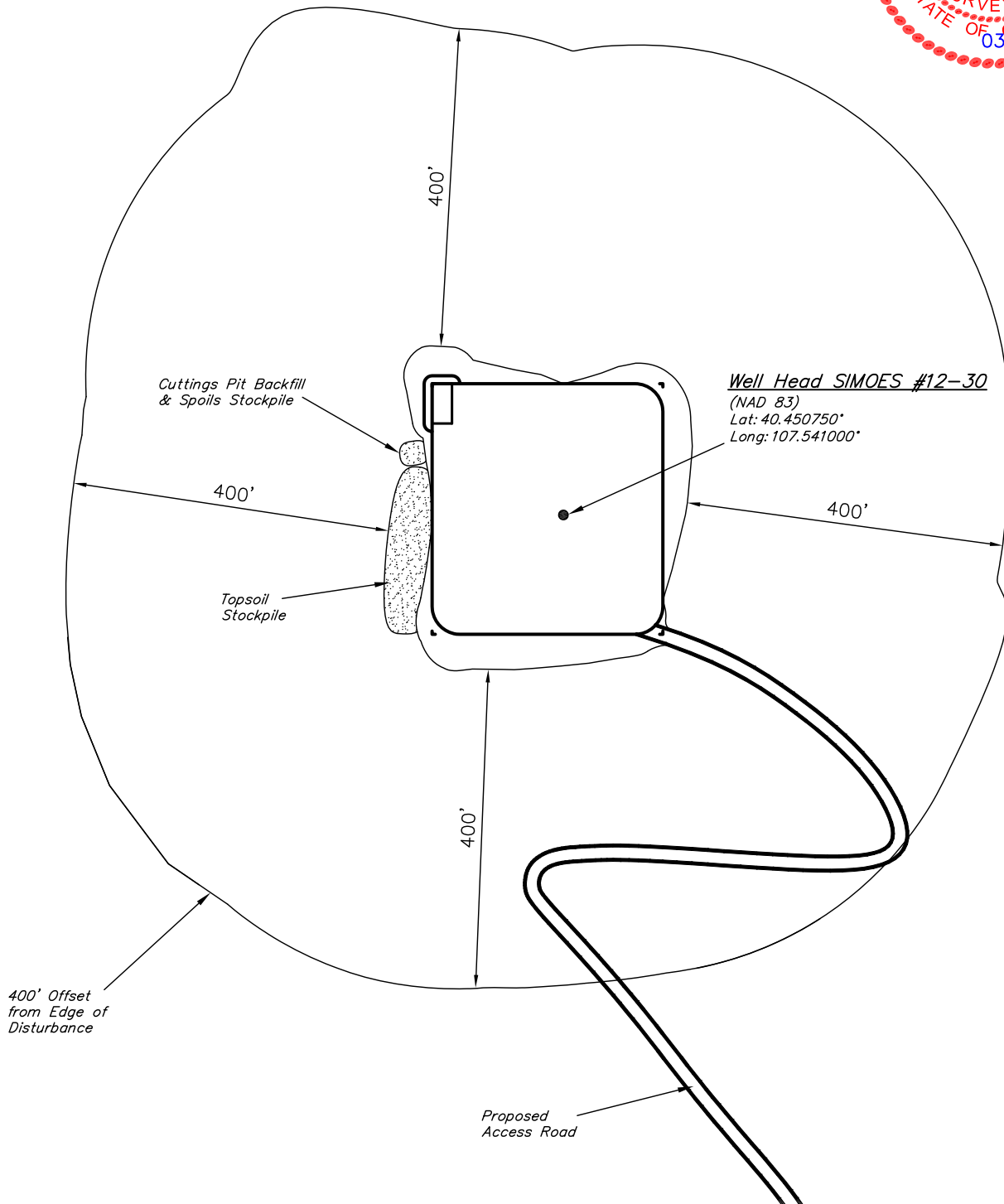
DATE: 03-07-12

DRAWN BY: S.F.



THERE ARE NO VISIBLE IMPROVEMENTS
WITHIN 400' OF THE PROPOSED WELL
DISTURBANCE.

SECTION 25
SECTION 30



UINTAH ENGINEERING & LAND SURVEYING

85 So. 200 East * Vernal, Utah 84078 * (435) 789-1017