
WILLIAMS PRODUCTION RMT INC - EBUS

**SG 544-22
GRAND VALLEY
Garfield County , Colorado**

**Cement Surface Casing
12-Dec-2011**

Post Job Report

The Road to Excellence Starts with Safety

Sold To #: 300721	Ship To #: 2885794	Quote #:	Sales Order #: 8562006
Customer: WILLIAMS PRODUCTION RMT INC - EBUS	Customer Rep: Wilson, W.C.		
Well Name: SG	Well #: 544-22	API/UWI #:	05-045-20678
Field: GRAND VALLEY	City (SAP): PARACHUTE	County/Parish: Garfield	State: Colorado
Lat: N 39.418 deg. OR N 39 deg. 25 min. 5.376 secs.	Long: W 108.086 deg. OR W -109 deg. 54 min. 49.154 secs.		
Contractor: H&P Drilling	Rig/Platform Name/Num: H&P 280		
Job Purpose: Cement Surface Casing			
Well Type: Development Well	Job Type: Cement Surface Casing		
Sales Person: KOHL, KYLE	Srv Supervisor: SMITH, CHRISTOPHER	MBU ID Emp #:	452619

Job Personnel

HES Emp Name	Exp Hrs	Emp #	HES Emp Name	Exp Hrs	Emp #	HES Emp Name	Exp Hrs	Emp #
BORSZICH, STEPHEN A		412388	GOWEN, WESLEY M		496205	LONDON, JASON L		496391
SMITH, CHRISTOPHER Scott		452619						

Equipment

HES Unit #	Distance-1 way	HES Unit #	Distance-1 way	HES Unit #	Distance-1 way	HES Unit #	Distance-1 way
10867423	60 mile	10871245	60 mile	10897887	60 mile	11259882	60 mile
11360881	60 mile						

Job Hours

Date	On Location Hours	Operating Hours	Date	On Location Hours	Operating Hours	Date	On Location Hours	Operating Hours

TOTAL	Total is the sum of each column separately							
-------	--	--	--	--	--	--	--	--

Job				Job Times			
Formation Name	Top	Bottom		Date	Time	Time Zone	
Formation Depth (MD)				Called Out	12 - Dec - 2011	03:30	MST
Form Type		BHST		On Location	12 - Dec - 2011	07:30	MST
Job depth MD	775. m	Job Depth TVD	775. m	Job Started	12 - Dec - 2011	00:00	MST
Water Depth		Wk Ht Above Floor	4. m	Job Completed	12 - Dec - 2011	02:00	MST
Perforation Depth (MD)	From	To		Departed Loc	12 - Dec - 2011	00:00	MST

Well Data

Description	New / Used	Max pressure MPa	Size mm	ID mm	Weight kg/m	Thread	Grade	Top MD m	Bottom MD m	Top TVD m	Bottom TVD m
13 1/2" Open Hole				13.5				.	775.		
9 5/8" Surface Casing	New		9.625	9.001	32.3		H-40	.	775.		

Sales/Rental/3rd Party (HES)

Description	Qty	Qty uom	Depth	Supplier
PLUG,CMTG,TOP,9 5/8,HWE,8.16 MIN/9.06 MA	1	EA		

Tools and Accessories

Type	Size	Qty	Make	Depth	Type	Size	Qty	Make	Depth	Type	Size	Qty	Make
Guide Shoe					Packer					Top Plug			
Float Shoe					Bridge Plug					Bottom Plug			
Float Collar					Retainer					SSR plug set			
Insert Float										Plug Container			
Stage Tool										Centralizers			

Miscellaneous Materials

Gelling Agt	Conc	Surfactant	Conc	Acid Type	Qty	Conc	%
Treatment Fld	Conc	Inhibitor	Conc	Sand Type	Size	Qty	

Fluid Data

Stage/Plug #: 1									
Fluid #	Stage Type	Fluid Name	Qty	Qty uom	Mixing Density kg/m3	Yield m3/sk	Mix Fluid m3/tonne	Rate m3/min	Total Mix Fluid m3/tonne
1	Water Spacer		20.00	bbl	8.34	.0	.0	.0	
2	VersaCem Tail Cement	VERSACEM (TM) SYSTEM (452010)	205.0	sacks	12.8	2.11	11.75		11.75
11.75 Gal		FRESH WATER							
3	Displacement Fluid		57.00	bbl	8.34	.0	.0	.0	
Calculated Values		Pressures		Volumes					
Displacement		Shut In: Instant		Lost Returns		Cement Slurry		Pad	
Top Of Cement		5 Min		Cement Returns		Actual Displacement		Treatment	
Frac Gradient		15 Min		Spacers		Load and Breakdown		Total Job	
Rates									
Circulating		Mixing		Displacement		Avg. Job			
Cement Left In Pipe	Amount	0 ft	Reason	Shoe Joint					
Frac Ring # 1 @	ID	Frac ring # 2 @	ID	Frac Ring # 3 @	ID	Frac Ring # 4 @	ID		
The Information Stated Herein Is Correct				Customer Representative Signature					

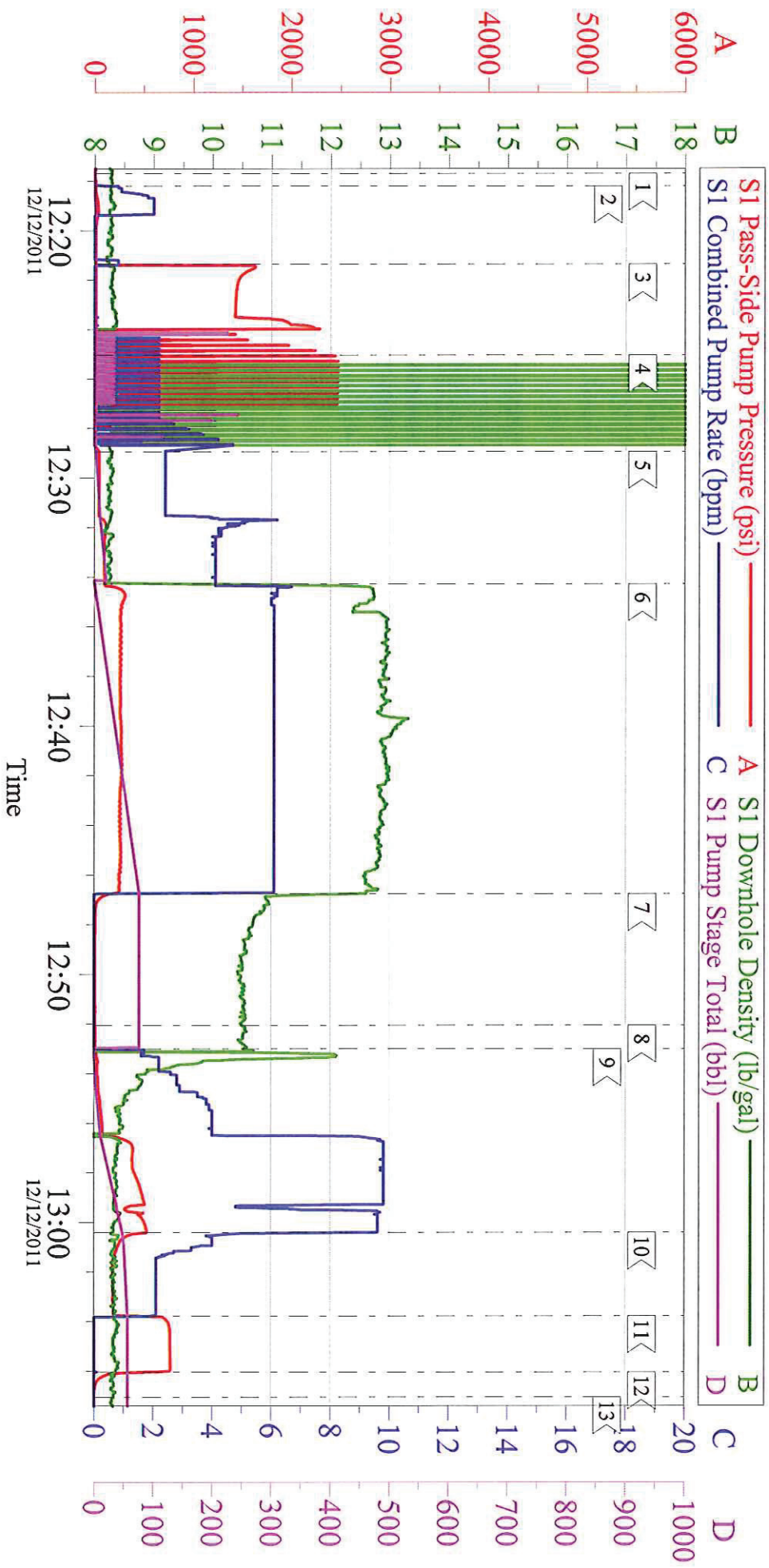
The Road to Excellence Starts with Safety

Sold To #: 300721		Ship To #: 2885794		Quote #:		Sales Order #: 8562006	
Customer: WILLIAMS PRODUCTION RMT INC - EBUS				Customer Rep: Wilson, W.C.			
Well Name: SG			Well #: 544-22		API/UWI #: 05-045-20678		
Field: GRAND VALLEY		City (SAP): PARACHUTE		County/Parish: Garfield		State: Colorado	
Legal Description:							
Lat: N 39.418 deg. OR N 39 deg. 25 min. 5.376 secs.				Long: W 108.086 deg. OR W -109 deg. 54 min. 49.154 secs.			
Contractor: H&P Drilling			Rig/Platform Name/Num: H&P 280				
Job Purpose: Cement Surface Casing						Ticket Amount:	
Well Type: Development Well			Job Type: Cement Surface Casing				
Sales Person: KOHL, KYLE			Srv Supervisor: SMITH, CHRISTOPHER			MBU ID Emp #: 452619	

Activity Description	Date/Time	Cht #	Rate m3/min	Volume m3		Pressure MPa		Comments
				Stage	Total	Tubing	Casing	
Pre-Convoy Safety Meeting	12/12/2011 06:00							ALL HES PERSONEL
Crew Leave Yard	12/12/2011 06:30							
Arrive At Loc	12/12/2011 07:30							RIG RUNNING CASEING.
Assessment Of Location Safety Meeting	12/12/2011 07:45							ALL HES PERSONEL
Rig-Up Equipment	12/12/2011 08:00							
Pre-Job Safety Meeting	12/12/2011 12:10							ALL HES PERSONEL AND RIG CREW
Start Job	12/12/2011 12:17							TD 775, TP 757', SJ 33', OH 13.5", CSG 9.625" 32.3# J-55 , MUD 10 PPG.
Other	12/12/2011 12:18		2	2			34.0	FILL LINES
Pressure Test	12/12/2011 12:21		0.5	0.5				ALL LINES HELD PRESSURE @ 1446 PSI
Pressure Test	12/12/2011 12:25		0.5	0.5				ALL LINES HELD PRESSURE @ 2479 PSI
Pump Spacer 1	12/12/2011 12:28		4	10			110.0	FRESH WATER
Pump Tail Cement	12/12/2011 12:34		6	77			270.0	205 SKS, 12.8 PPG, 2.11 FT3/ SK, 11.75 GAL/SK, SET UP TIME 1:51 @ 70 BC
Shutdown	12/12/2011 12:46							
Drop Top Plug	12/12/2011 12:52							PLUG WENT

Activity Description	Date/Time	Cht #	Rate m3/ min	Volume m3		Pressure MPa		Comments
				Stage	Total	Tubing	Casing	
Pump Displacement	12/12/2011 12:53		10	47			475.0	FRESH WATER
Slow Rate	12/12/2011 13:00		2	10			230.0	
Bump Plug	12/12/2011 13:03						770.0	PLUG BUMPED
Check Floats	12/12/2011 13:06							FLOATS HELD
End Job	12/12/2011 13:07							GOOD CIRCULATION THROUGHOUT JOB, 10 BBLs OF CEMENT TO SURFACE, PIPE WAS NOT MOVED DURING THE JOB.
Post-Job Safety Meeting (Pre Rig-Down)	12/12/2011 13:10							ALL HES PERSONEL
Rig-Down Completed	12/12/2011 13:55							
Depart Location Safety Meeting	12/12/2011 14:10							ALL HES PERSONEL
Crew Leave Location	12/12/2011 14:15							
Other	12/12/2011 14:15							THANK YOU FOR CHOOSING HALLIBURTON, CHRIS SMITH AND CREW

WILLIAMS - SG 544-22 9.625" SURFACE



Local Event Log

1 < START JOB	12:17:42	2 < FILL LINES	12:18:13	3 < TEST LINES (LOW)	12:21:22
4 < TEST LINES (HIGH)	12:25:03	5 < H2O SPACER	12:28:57	6 < TAIL CEMENT	12:34:17
7 < SHUTDOWN	12:46:46	8 < DROP PLUG	12:52:03	9 < H2O DISPLACEMENT	12:53:01
10 < SLOW RATE	13:00:25	11 < BUMP PLUG	13:03:47	12 < CHECK FLOATS	13:06:03
13 < END JOB	13:07:04				

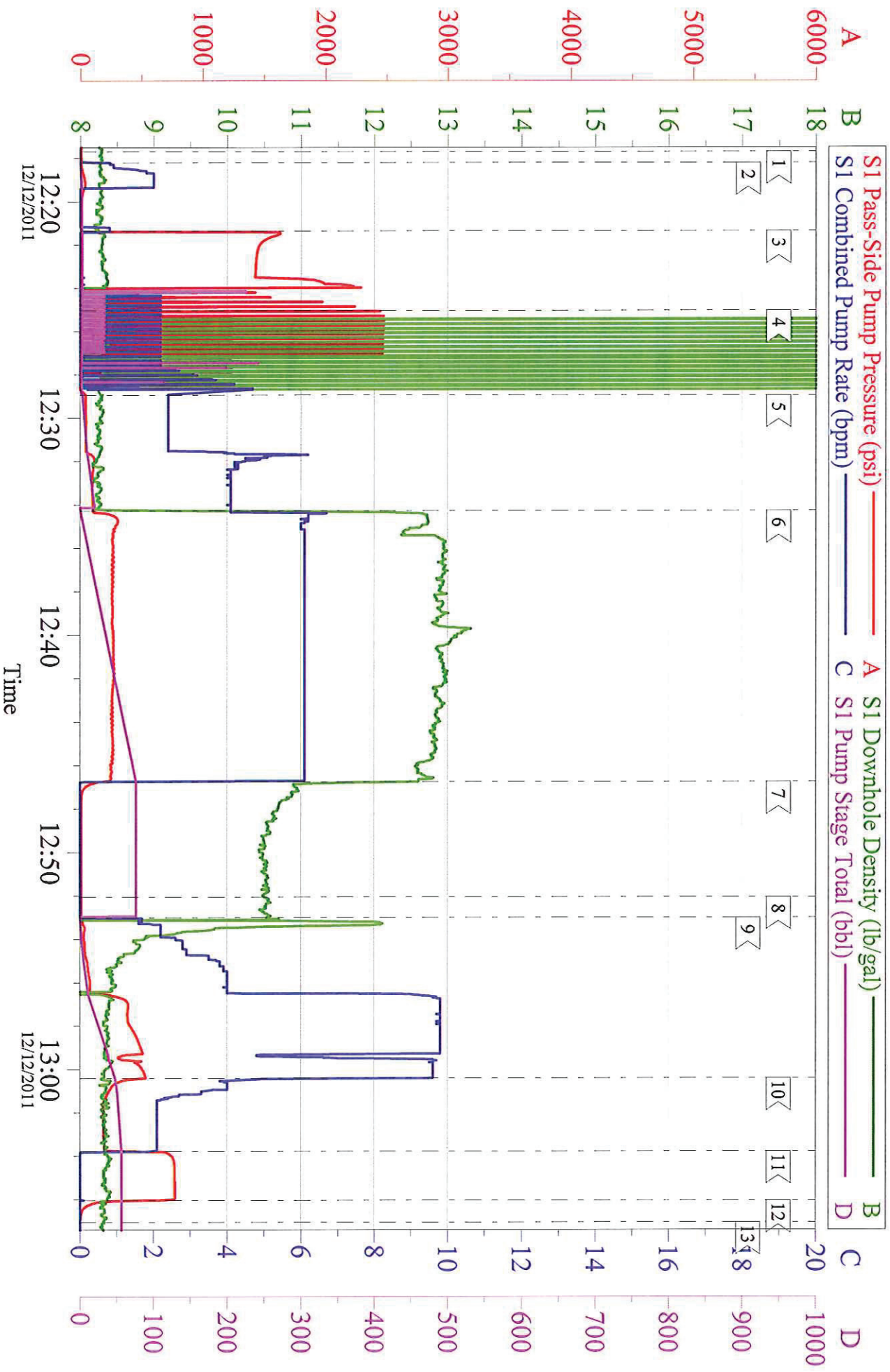
Customer: WILLIAMS PRODUCTION RMT INC - EBUS
 Well Description: SG 544-22
 Company Rep:

Job Date: 12-Dec-2011
 Job Type: 05-045-20678
 Cement Supervisor:

Sales Order #: 8562006
 ADC Used:
 Elite #X:

WILLIAMS - SG 544-22

9.625" SURFACE



Customer:	WILLIAMS PRODUCTION RMT INC - EBUS	Job Date:	12-Dec-2011	Sales Order #:	8562006
Well Description:	SG 544-22	Job Type:	05-045-20678	ADC Used:	
Company Rep:		Cement Supervisor:		Elite #X:	

OptiCem v6.4.10
12-Dec-11 13:11