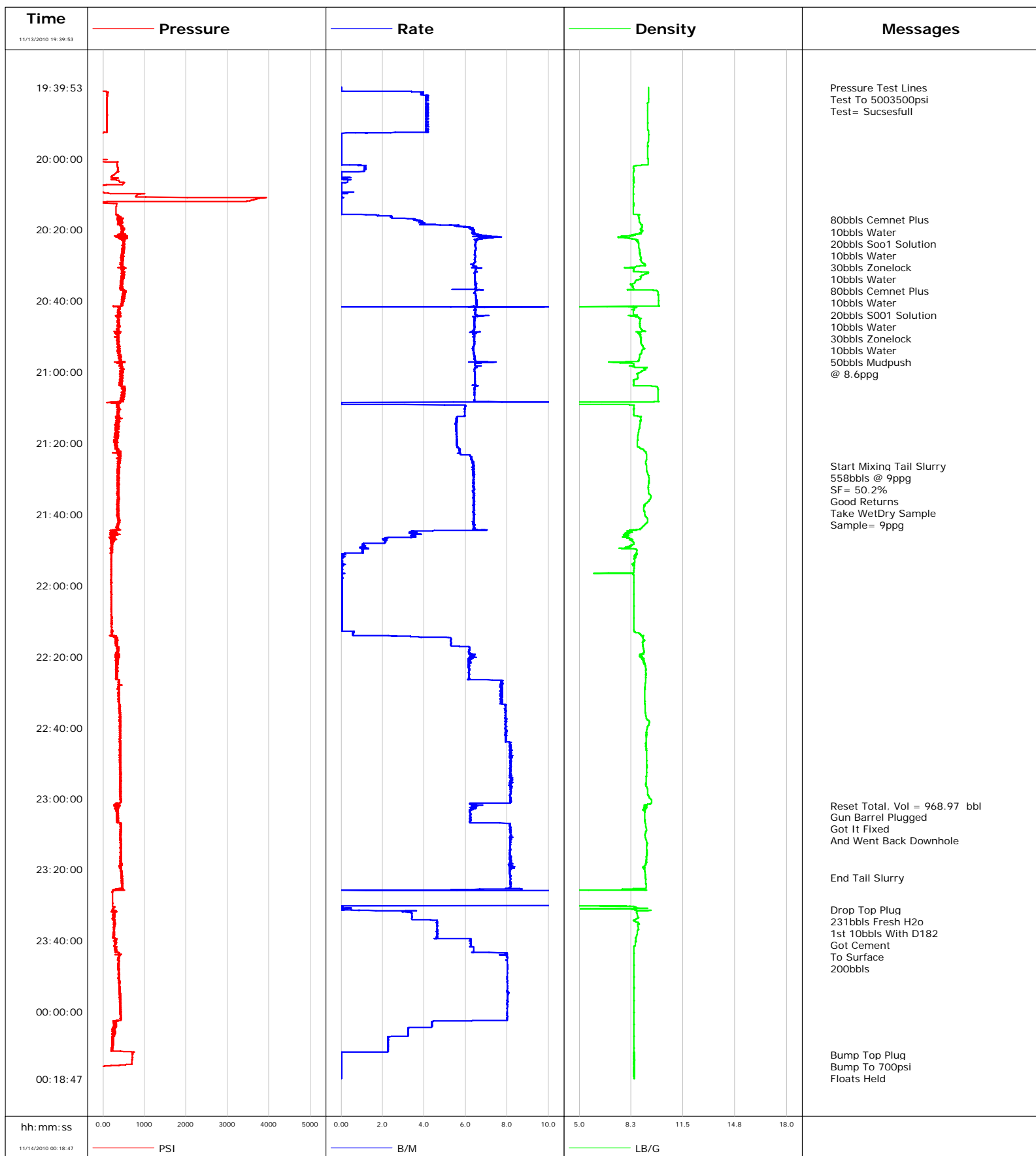
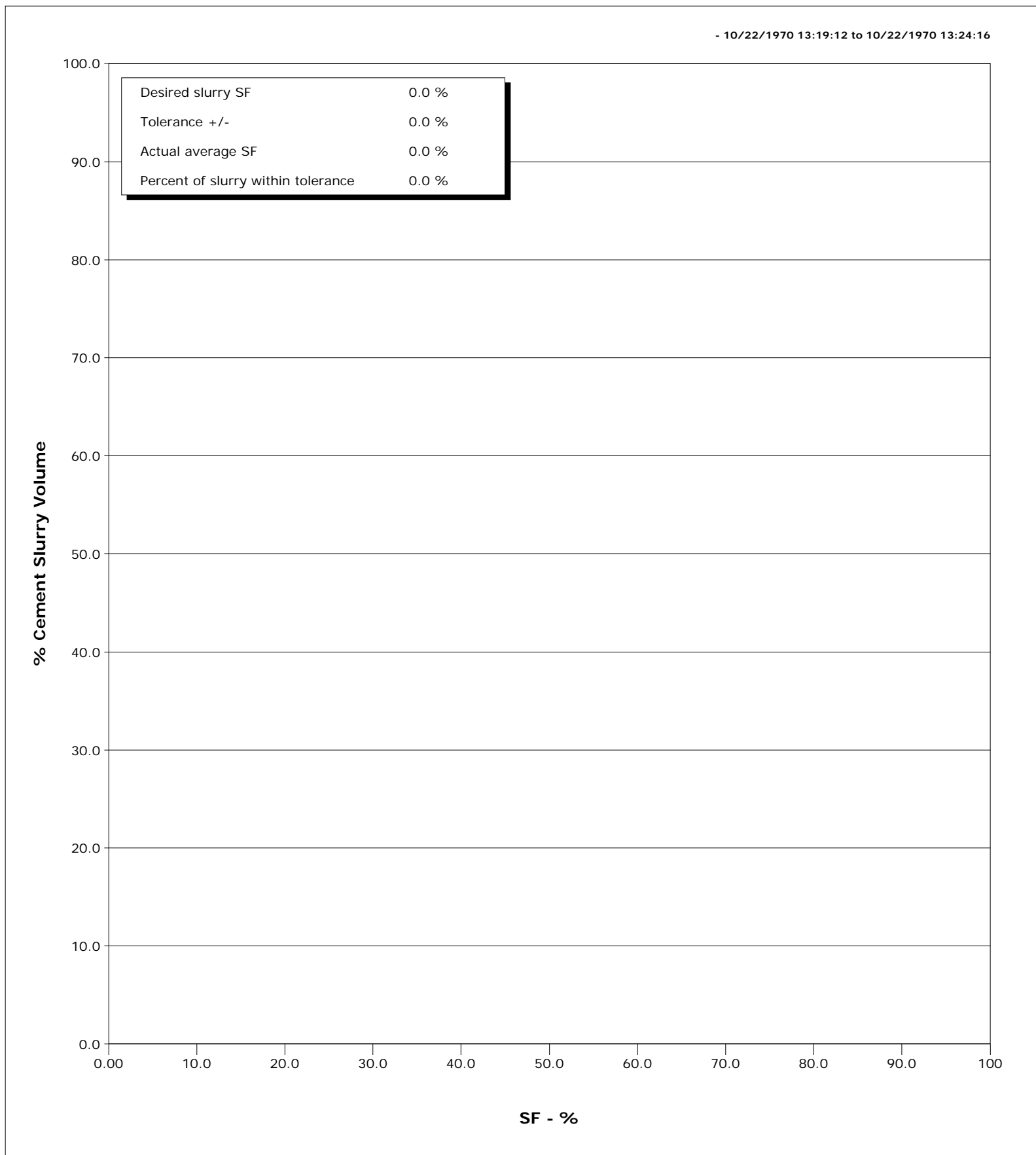


Well SGU 8506B
Field N PARACHUTE
Engineer
Country United States

Client ENCANA
SIR No. BJ90-00063
Job Type SURFACE
Job Date 11-13-2010



Well	SGU 8506B	Client	ENCANA
Field	N PARACHUTE	SIR No.	BJ90-00063
Engineer		Job Type	SURFACE
Country	United States	Job Date	11-13-2010





Cementing Service Report

				Customer ENCANA			Job Number BJ90-00063		
Well SGU 8506B			Location (legal) N PARACHUTE			Schlumberger Location GJCO		Job Start Nov/13/2010	
Field N PARACHUTE		Formation Name/Type			Deviation	Bit Size 14.8 in		Well MD	Well TVD
County GARFIEDL		State/Province Colorado			BHP	BHST		BHCT	Pore Press. Gradient
Well Master		API/UWI							
Rig Name	Drilled For Gas		Service Via Land		Casing/Liner				
					Depth,	Size,	Weight,	Grade	Thread
Offshore Zone	Well Class New		Well Type Development						
Drilling Fluid Type		Max. Density		Plastic Viscosity		Tubing/Drill Pipe			
					Depth,	Size,	Weight,	Grade	Thread
Service Line Cementing	Job Type SURFACE								
Max. Allowed Tub. Press	Max. Allowed Ann. Press		WH Connection Single Cement head		Perforations/Open Hole				
					Top,	Bottom,		No. of Shots	Total Interval
Service Instructions									
									Diameter
Treat Down Casing				Displacement 231.0 bbl		Packer Type		Packer Depth	
Tubing Vol.				Casing Vol. 234.0 bbl		Annular Vol. 386.0 bbl		Openhole Vol. 638.0 bbl	
Casing/Tubing Secured <input checked="" type="checkbox"/>		1 Hole Vol. Circulated prior to Cement <input checked="" type="checkbox"/>			Casing Tools			Squeeze Job	
Lift Pressure 1502 psi					Shoe Type Guide		Squeeze Type		
Pipe Rotated <input type="checkbox"/>		Pipe Reciprocated <input type="checkbox"/>			Shoe Depth 3035.0 ft		Tool Type		
No. Centralizers		Top Plugs		Bottom Plugs		Stage Tool Type		Tool Depth	
Cement Head Type Single					Stage Tool Depth		Tail Pipe Size		
Job Scheduled For Nov/13/2010		Arrived on Location Nov/13/2010		Leave Location Nov/13/2010		Collar Type Diff-Fill		Tail Pipe Depth	
						Collar Depth 2988.0 ft		Sqz. Total Vol.	
Date	Time 24-hr clock	Treating Pressure PSI	Flow Rate B/M	Density LB/G	Volume BBL	Message			
11/13/2010	19:09:43					Started Acquisition			
11/13/2010	19:17:36					Cement 3035' Surface			
11/13/2010	19:17:36					Casing			
11/13/2010	19:17:36					SJ= 2988'			
11/13/2010	19:17:36					Held Safety Meeting			
11/13/2010	19:39:53	-20	0.0	9.34	0.0				
11/13/2010	19:39:55					Pressure Test Lines			
11/13/2010	19:39:55	-20	0.0	9.34	0.0				
11/13/2010	19:39:57					Test To 5003500psi			
11/13/2010	19:39:57					Test= Sucsesfull			
11/13/2010	19:39:57	-20	0.0	9.34	0.0				
11/13/2010	19:41:43	108	4.0	9.34	2.4				
11/13/2010	19:43:43	92	4.1	9.34	10.6				
11/13/2010	19:45:43	92	4.1	9.29	18.7				
11/13/2010	19:47:43	95	4.2	9.29	26.9				
11/13/2010	19:49:43	92	4.1	9.29	35.1				
11/13/2010	19:51:43	90	4.2	9.29	43.3				
11/13/2010	19:53:43	-21	0.0	9.34	47.3				
11/13/2010	19:55:43	-21	0.0	9.30	47.3				
11/13/2010	19:57:43	-18	0.0	9.29	47.3				
11/13/2010	19:59:43	-13	0.0	9.30	47.3				

Well			Field		Job Start		Customer		Job Number	
SGU 8506B			N PARACHUTE		Nov/13/2010		ENCANA		BJ90-00063	
Date	Time 24-hr clock	Treating Pressure PSI	Flow Rate B/M	Density LB/G	Volume BBL	Message				
11/13/2010	20:03:43	371	0.1	8.41	49.5					
11/13/2010	20:05:43	220	0.0	8.41	49.5					
11/13/2010	20:07:43	-23	0.0	8.40	49.8					
11/13/2010	20:09:43	85	0.3	8.40	49.9					
11/13/2010	20:11:43	3579	0.0	8.40	50.0					
11/13/2010	20:13:43	320	0.0	8.40	50.0					
11/13/2010	20:15:43	332	0.9	8.63	50.0					
11/13/2010	20:17:13					80bbls Cemnet Plus				
11/13/2010	20:17:13	407	3.6	8.76	53.8					
11/13/2010	20:17:14					10bbls Water				
11/13/2010	20:17:14					20bbls Soo1 Solution				
11/13/2010	20:17:14					10bbls Water				
11/13/2010	20:17:14					30bbls Zonelock				
11/13/2010	20:17:14					10bbls Water				
11/13/2010	20:17:14					80bbls Cemnet Plus				
11/13/2010	20:17:14					10bbls Water				
11/13/2010	20:17:14	338	3.5	8.76	53.9					
11/13/2010	20:17:43	435	3.9	8.76	55.7					
11/13/2010	20:19:14					20bbls S001 Solution				
11/13/2010	20:19:14	465	6.1	8.93	62.7					
11/13/2010	20:19:15					10bbls Water				
11/13/2010	20:19:15					30bbls Zonelock				
11/13/2010	20:19:15					10bbls Water				
11/13/2010	20:19:15					50bbls Mudpush				
11/13/2010	20:19:15					@ 8.6ppg				
11/13/2010	20:19:15	465	6.1	8.93	62.8					
11/13/2010	20:19:43	471	6.4	8.86	65.7					
11/13/2010	20:21:43	454	6.8	8.24	78.6					
11/13/2010	20:23:43	504	6.5	8.69	92.0					
11/13/2010	20:25:43	487	6.5	8.78	104.9					
11/13/2010	20:27:43	471	6.5	8.85	117.8					
11/13/2010	20:29:43	444	6.3	9.10	130.7					
11/13/2010	20:31:43	472	6.5	8.40	143.6					
11/13/2010	20:33:43	488	6.5	8.85	156.5					
11/13/2010	20:35:43	423	6.5	8.34	169.5					
11/13/2010	20:37:43	532	6.4	9.94	182.4					
11/13/2010	20:39:43	473	6.5	9.97	195.4					
11/13/2010	20:41:43	408	8.7	8.11	208.8					
11/13/2010	20:43:43	400	6.5	8.40	221.8					
11/13/2010	20:45:43	351	6.4	8.82	234.8					
11/13/2010	20:47:43	372	6.4	8.85	247.6					
11/13/2010	20:49:43	345	6.4	8.81	260.5					
11/13/2010	20:51:43	364	6.4	8.86	273.3					
11/13/2010	20:53:43	351	6.3	8.96	286.1					
11/13/2010	20:55:43	410	6.5	8.78	298.9					
11/13/2010	20:57:43	439	6.5	8.43	311.9					
11/13/2010	20:59:43	417	6.4	8.95	324.8					
11/13/2010	21:01:43	464	6.5	8.67	337.7					
11/13/2010	21:03:43	399	6.5	8.40	350.6					
11/13/2010	21:05:43	452	6.4	9.95	363.5					
11/13/2010	21:07:43	508	6.4	9.95	376.4					
11/13/2010	21:09:43	340	6.0	8.41	386.0					
11/13/2010	21:11:43	339	6.0	8.41	397.9					
11/13/2010	21:13:43	335	5.5	8.84	409.4					

Well			Field		Job Start		Customer		Job Number	
SGU 8506B			N PARACHUTE		Nov/13/2010		ENCANA		BJ90-00063	
Date	Time 24-hr clock	Treating Pressure PSI	Flow Rate B/M	Density LB/G	Volume BBL	Message				
11/13/2010	21:17:43	338	5.6	8.69	431.6					
11/13/2010	21:19:43	303	5.6	8.65	442.7					
11/13/2010	21:21:43	356	5.7	8.95	454.0					
11/13/2010	21:23:43	405	6.2	9.23	465.6					
11/13/2010	21:25:43	384	6.4	9.17	478.2					
11/13/2010	21:26:20					Start Mixing Tail Slurry				
11/13/2010	21:26:20					558bbls @ 9ppg				
11/13/2010	21:26:20					SF= 50.2%				
11/13/2010	21:26:20					Good Returns				
11/13/2010	21:26:20					Take WetDry Sample				
11/13/2010	21:26:20					Sample= 9ppg				
11/13/2010	21:26:20	396	6.4	9.21	482.1					
11/13/2010	21:27:43	363	6.4	9.23	490.9					
11/13/2010	21:29:43	383	6.4	9.36	503.7					
11/13/2010	21:31:43	361	6.4	9.34	516.5					
11/13/2010	21:33:43	380	6.4	9.36	529.3					
11/13/2010	21:35:43	368	6.4	9.45	542.0					
11/13/2010	21:37:43	374	6.4	9.08	554.8					
11/13/2010	21:39:43	359	6.4	9.10	567.6					
11/13/2010	21:41:43	406	6.4	9.29	580.4					
11/13/2010	21:43:43	324	6.4	8.94	593.2					
11/13/2010	21:45:43	188	3.6	7.90	603.0					
11/13/2010	21:47:43	229	2.1	8.36	608.4					
11/13/2010	21:49:43	209	1.1	7.80	611.1					
11/13/2010	21:51:43	204	0.1	8.50	612.5					
11/13/2010	21:53:43	202	0.1	8.44	612.6					
11/13/2010	21:55:43	199	0.0	8.42	612.7					
11/13/2010	21:57:43	204	0.0	8.42	612.7					
11/13/2010	21:59:43	191	0.0	8.41	612.8					
11/13/2010	22:01:43	198	0.0	8.41	612.9					
11/13/2010	22:03:43	199	0.0	8.41	613.0					
11/13/2010	22:05:43	207	0.0	8.42	613.0					
11/13/2010	22:07:43	205	0.0	8.42	613.1					
11/13/2010	22:09:43	203	0.0	8.42	613.2					
11/13/2010	22:11:43	207	0.0	8.42	613.2					
11/13/2010	22:13:43	215	0.6	8.80	613.7					
11/13/2010	22:15:43	326	5.3	9.02	621.1					
11/13/2010	22:17:43	336	6.2	9.02	632.1					
11/13/2010	22:19:43	372	6.4	8.81	644.5					
11/13/2010	22:21:43	363	6.1	9.06	657.0					
11/13/2010	22:23:43	313	6.1	9.18	669.3					
11/13/2010	22:25:43	320	6.2	9.17	681.6					
11/13/2010	22:27:43	382	7.8	9.14	695.7					
11/13/2010	22:29:43	385	7.7	9.10	711.1					
11/13/2010	22:31:43	387	7.8	9.09	726.6					
11/13/2010	22:33:43	395	7.9	9.12	742.1					
11/13/2010	22:35:43	408	7.9	9.14	757.9					
11/13/2010	22:37:43	402	7.9	9.24	773.8					
11/13/2010	22:39:43	410	7.9	9.29	789.7					
11/13/2010	22:41:43	425	7.9	9.21	805.5					
11/13/2010	22:43:43	418	7.9	9.18	821.4					
11/13/2010	22:45:43	403	8.2	9.19	837.6					
11/13/2010	22:47:43	412	8.2	9.23	853.9					
11/13/2010	22:49:43	414	8.2	9.23	870.3					

Well			Field		Job Start		Customer		Job Number	
SGU 8506B			N PARACHUTE		Nov/13/2010		ENCANA		BJ90-00063	
Date	Time 24-hr clock	Treating Pressure PSI	Flow Rate B/M	Density LB/G	Volume BBL	Message				
11/13/2010	22:53:43	426	8.2	9.21	902.9					
11/13/2010	22:55:43	419	8.2	9.18	919.3					
11/13/2010	22:57:43	419	8.2	9.29	935.6					
11/13/2010	22:59:43	422	8.2	9.39	951.9					
11/13/2010	23:01:43	293	6.5	9.27	967.5					
11/13/2010	23:01:57					Reset Total, Vol = 968.97 bbl				
11/13/2010	23:01:57	326	6.3	9.21	969.0					
11/13/2010	23:03:43	344	6.2	9.12	980.1					
11/13/2010	23:05:00					Gun Barrel Plugged				
11/13/2010	23:05:00					Got It Fixed				
11/13/2010	23:05:00	350	6.2	9.10	988.1					
11/13/2010	23:05:30					And Went Back Downhole				
11/13/2010	23:05:30	355	6.2	9.11	991.2					
11/13/2010	23:05:43	339	6.2	9.11	992.6					
11/13/2010	23:07:43	440	8.1	9.17	1006.6					
11/13/2010	23:09:43	421	8.2	9.15	1022.9					
11/13/2010	23:11:43	406	8.2	9.20	1039.2					
11/13/2010	23:13:43	424	8.1	9.23	1055.5					
11/13/2010	23:15:43	438	8.1	9.24	1071.8					
11/13/2010	23:17:43	422	8.1	9.19	1088.1					
11/13/2010	23:19:43	419	8.2	9.06	1104.4					
11/13/2010	23:21:43	453	8.2	9.14	1120.7					
11/13/2010	23:22:07					End Tail Slurry				
11/13/2010	23:22:07	454	8.2	9.15	1124.0					
11/13/2010	23:23:43	465	8.1	9.17	1137.0					
11/13/2010	23:25:43	281	5.2	9.22	1153.0					
11/13/2010	23:27:43	235	25.0	-0.02	1197.3					
11/13/2010	23:29:43	233	25.0	-0.02	1247.3					
11/13/2010	23:31:10					Drop Top Plug				
11/13/2010	23:31:10	242	0.0	8.38	1257.9					
11/13/2010	23:31:14					231bbbls Fresh H2o				
11/13/2010	23:31:14					1st 10bbbls With D182				
11/13/2010	23:31:14					Got Cement				
11/13/2010	23:31:14					To Surface				
11/13/2010	23:31:14					200bbbls				
11/13/2010	23:31:14	249	0.0	8.52	1257.9					
11/13/2010	23:31:43	293	3.1	8.63	1258.6					
11/13/2010	23:33:43	260	3.4	8.69	1265.3					
11/13/2010	23:35:43	288	4.6	8.68	1274.0					
11/13/2010	23:37:43	246	4.6	8.64	1283.3					
11/13/2010	23:39:43	324	6.3	8.54	1293.1					
11/13/2010	23:41:43	330	6.3	8.43	1305.6					
11/13/2010	23:43:43	382	8.0	8.43	1318.9					
11/13/2010	23:45:43	390	8.0	8.43	1334.9					
11/13/2010	23:47:43	389	8.0	8.43	1351.0					
11/13/2010	23:49:43	381	8.0	8.43	1367.0					
11/13/2010	23:51:43	407	8.0	8.43	1383.0					
11/13/2010	23:53:43	396	8.0	8.43	1399.1					
11/13/2010	23:55:43	402	8.0	8.43	1415.1					
11/13/2010	23:57:43	415	8.0	8.43	1431.1					
11/13/2010	23:59:43	420	8.0	8.43	1447.2					
11/14/2010	00:01:43	425	8.0	8.43	1463.2					
11/14/2010	00:03:43	266	4.4	8.43	1474.9					
11/14/2010	00:05:43	267	3.2	8.43	1482.2					

Well SGU 8506B			Field N PARACHUTE		Job Start Nov/13/2010		Customer ENCANA		Job Number BJ90-00063	
Date	Time 24-hr clock	Treating Pressure PSI		Flow Rate B/M	Density LB/G		Volume BBL		Message	
11/14/2010	00:09:43	227		2.3	8.43		1492.4			
11/14/2010	00:11:43	722		0.0	8.43		1496.1			
11/14/2010	00:12:02								Bump Top Plug	
11/14/2010	00:12:02	712		0.0	8.44		1496.1			
11/14/2010	00:12:03								Bump To 700psi	
11/14/2010	00:12:03	712		0.0	8.44		1496.1			
11/14/2010	00:13:43	701		0.0	8.44		1496.1			
11/14/2010	00:15:43								Floats Held	
11/14/2010	00:15:43	-18		0.0	8.44		1496.1			

Post Job Summary

Average Pump Rates, bbl/min					Volume of Fluid Injected, bbl				
Slurry 5.9	N2	Mud 0.0	Maximum Rate 25.0	Total Slurry 1496.1	Mud 0.0	Spacer 0.0	N2		
Treating Pressure Summary, psi					Breakdown Fluid				
Maximum 3940	Final -16	Average 368	Bump Plug to 700	Breakdown	Type	Volume	Density		
Avg. N2 Percent	Designed Slurry Volume 558.0 bbl		Displacement 238.2 bbl	Mix Water Temp 87 degF	Cement Circulated to Surface? <input checked="" type="checkbox"/>		Volume 200.0 bbl		
					Washed Thru Perfs <input type="checkbox"/>		To		
Customer or Authorized Representative IRA COX			Schlumberger Supervisor JASON CRICK			Circulation Lost <input type="checkbox"/>	Job Completed <input checked="" type="checkbox"/>		
						-		-	