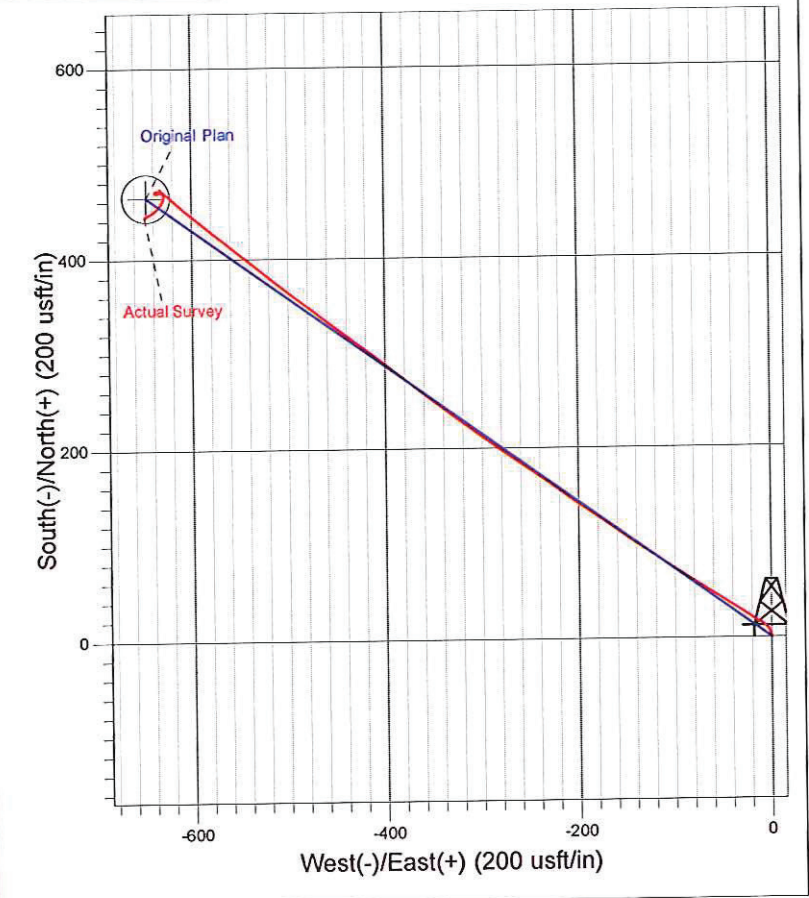
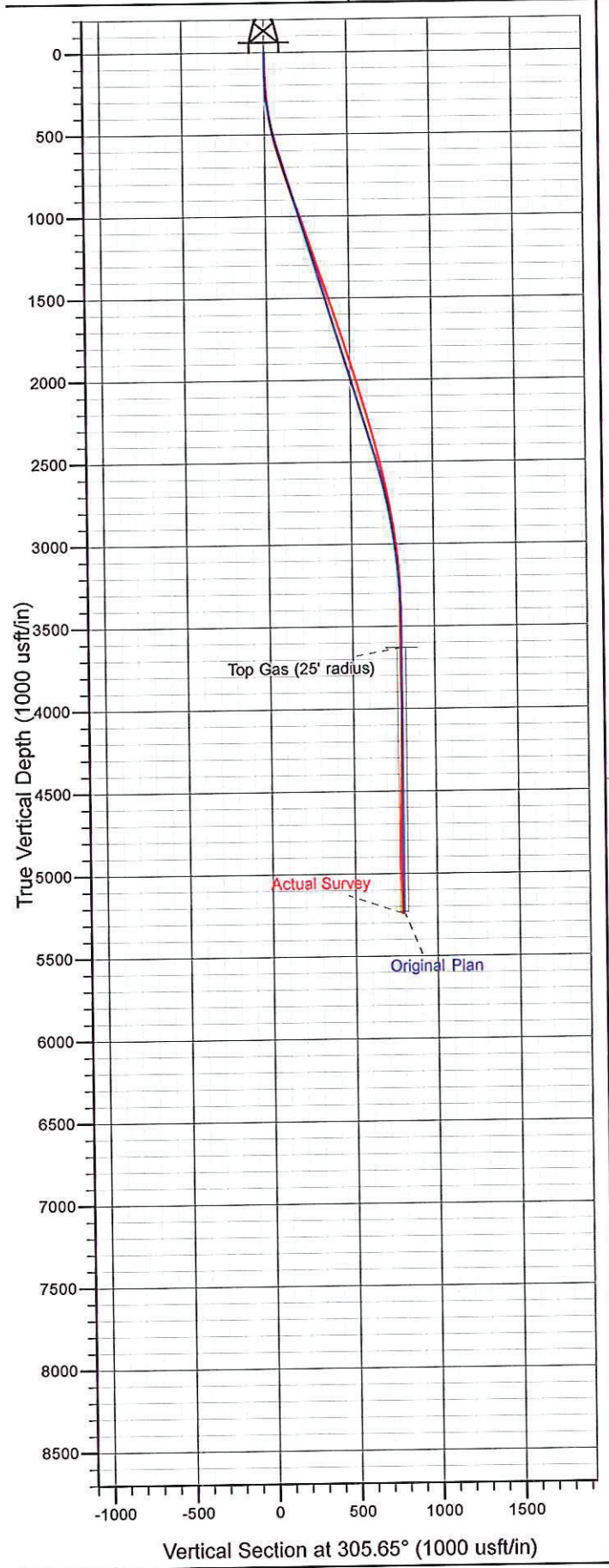




Surface Location: SG 14-23 Pad  
North American Datum 1983 , US State Plane 1983 . Colorado Central Zone  
Ground Elevation: 5070.00

| +N/-S | +E/-W | Northing   | Easting    | Latitude        | Longitude        | Slot |
|-------|-------|------------|------------|-----------------|------------------|------|
| 0.00  | 0.00  | 1587601.50 | 2269401.80 | 39° 25' 5.434 N | 108° 5' 11.124 W | A1   |

KELLY BUSHING @ 5094.00usft (H&P 280 (24' RKB) kjs)



Azimuths to True North  
Magnetic North: 10.31°

Magnetic Field  
Strength: 52149.3snT  
Dip Angle: 65.64°  
Date: 12/26/2011  
Model: IGRF2010