
CHEVRON - MID-CONTINENT EBIZ

**SKR 698-09-AV-24
SKINNER RIDGE
Garfield County , Colorado**

Cement Production Casing
27-May-2009

Job Site Documents

Cementing Job Summary

The Road to Excellence Starts with Safety

Sold To #: 338668	Ship To #: 2713367	Quote #:	Sales Order #: 6690454
Customer: CHEVRON - MID-CONTINENT EBIZ		Customer Rep: MOELLER, RONALD	
Well Name: SKR		Well #: 698-09-AV-24	
Field: SKINNER RIDGE	City (SAP): PARACHUTE	County/Parish: Garfield	API/UWI #: 05-045-18438
Lat: N 39.551 deg. OR N 39 deg. 33 min. 3.323 secs.		Long: W 108.924 deg. OR W -109 deg. 4 min. 34.399 secs.	
Contractor: CHEVRON		Rig/Platform Name/Num: H&P 318	
Job Purpose: Cement Production Casing			
Well Type: Development Well		Job Type: Cement Production Casing	
Sales Person: DUNNING, DUSTIN		Srv Supervisor: STILLSON, ERIC	
		MBU ID Emp #: 393789	

Job Personnel

HES Emp Name	Exp Hrs	Emp #	HES Emp Name	Exp Hrs	Emp #	HES Emp Name	Exp Hrs	Emp #
BROST, ROBERT W	11	394382	FEUERBORN, JOHN William	11	381677	STILLSON, ERIC W	11	393789
Sullivan, Mark	11	425453	WEAVER, CARLTON Russell	11	457698	WHITE, EDWARD W	11	424173

Equipment

HES Unit #	Distance-1 way	HES Unit #	Distance-1 way	HES Unit #	Distance-1 way	HES Unit #	Distance-1 way
10829462	60 mile	10872429	60 mile	10893932	60 mile	10897909	60 mile

Job Hours

Date	On Location Hours	Operating Hours	Date	On Location Hours	Operating Hours	Date	On Location Hours	Operating Hours
05-27-09	8	2						
TOTAL								

Total is the sum of each column separately

Job

Formation Name	Formation Depth (MD)	Top	Bottom	Job Times	Called Out	Date	Time	Time Zone
Form Type			BHST	On Location	26 - May - 2009	23:30		MST
Job depth MD	6337. ft		Job Depth TVD	Job Started	27 - May - 2009	03:30		MST
Water Depth			Wk Ht Above Floor	Job Completed	27 - May - 2009	08:28		MST
Perforation Depth (MD)	From		To	Job Completed	27 - May - 2009	09:51		MST
				Departed Loc	27 - May - 2009	11:30		MST

Well Data

Description	New / Used	Max pressure psig	Size in	ID in	Weight lbm/ft	Thread	Grade	Top MD ft	Bottom MD ft	Top TVD ft	Bottom TVD ft
7 7/8 Open Hole Section				7.875				1030.	6337.		
4 1/2 Production Casing	Unknown		4.5	4.	11.6				6307.		
8 5/8 Surface Casing	Unknown		8.625	8.097	24.				1030.		

Sales/Rental/3rd Party (HES)

Description	Qty	Qty uom	Depth	Supplier
PLUG, CMTG, TOP, 4 1/2, HWE, 3.65 MIN/4.14 MA	1	EA		
PORT. DAS W/CEMWIN; ACQUIRE W/HES, ZI	1	JOB		
ADC (AUTO DENSITY CTRL) SYS, /JOB, ZI	1	JOB		

Tools and Accessories

Type	Size	Qty	Make	Depth	Type	Size	Qty	Make	Depth	Type	Size	Qty	Make
Guide Shoe					Packer					Top Plug	4.5	1	
Float Shoe					Bridge Plug					Bottom Plug			
Float Collar					Retainer					SSR plug set			
Insert Float										Plug Container	4.5	1	
Stage Tool										Centralizers			

Cementing Job Summary

Miscellaneous Materials												
Gelling Agt		Conc		Surfactant		Conc		Acid Type		Qty		Conc %
Treatment Fld		Conc		Inhibitor		Conc		Sand Type		Size		Qty
Fluid Data												
Stage/Plug #: 1												
Fluid #	Stage Type	Fluid Name			Qty	Qty uom	Mixing Density lbm/gal	Yield ft ³ /sk	Mix Fluid Gal/sk	Rate bbl/min	Total Mix Fluid Gal/sk	
1	Dyed Spacer				40.00	bbl	8.33	.0	.0	7.0		
2	Lead Cement	VARICEM (TM) CEMENT (452009)			330.0	sacks	12.8	1.6	7.31	7.0		
3	Tail Cement	VARICEM (TM) CEMENT (452009)			650.0	sacks	13.2	1.47	6.32	7.0		
4	KCL Displacement				97.00	bbl	8.45	.0	.0	8.0		
Calculated Values				Pressures			Volumes					
Displacement	97	Shut In: Instant			Lost Returns		0	Cement Slurry	264	Pad		
Top Of Cement		5 Min			Cement Returns		0	Actual Displacement	97	Treatment		
Frac Gradient		15 Min			Spacers		40	Load and Breakdown		Total Job		
Rates												
Circulating	RIG	Mixing		7		Displacement		8	Avg. Job		7	
Cement Left In Pipe	Amount	46.13 ft	Reason	Shoe Joint								
Frac Ring # 1 @	ID	Frac ring # 2 @		ID	Frac Ring # 3 @		ID	Frac Ring # 4 @		ID		
The Information Stated Herein Is Correct						Customer Representative Signature						

The Road to Excellence Starts with Safety

Sold To #: 338668	Ship To #: 2713367	Quote #:	Sales Order #: 6690454
Customer: CHEVRON - MID-CONTINENT EBIZ	Customer Rep: MOELLER, RONALD		
Well Name: SKR	Well #: 698-09-AV-24	API/UWI #: 05-045-18438	
Field: SKINNER RIDGE	City (SAP): PARACHUTE	County/Parish: Garfield	State: Colorado
Legal Description:			
Lat: N 39.551 deg. OR N 39 deg. 33 min. 3.323 secs.		Long: W 108.924 deg. OR W -109 deg. 4 min. 34.399 secs.	
Contractor: CHEVRON	Rig/Platform Name/Num: H&P 318		
Job Purpose: Cement Production Casing		Ticket Amount:	
Well Type: Development Well	Job Type: Cement Production Casing		
Sales Person: DUNNING, DUSTIN	Srv Supervisor: STILLSON, ERIC	MBU ID Emp #: 393789	

Activity Description	Date/Time	Cht #	Rate bbl/ min	Volume bbl		Pressure psig		Comments
				Stage	Total	Tubing	Casing	
Call Out	05/26/2009 23:30							CHEVRON PRODUCTION SKR 698-09-AV-24
Pre-Convoy Safety Meeting	05/27/2009 02:00							ENTIRE CREW
Arrive At Loc	05/27/2009 03:30							ARRIVED EARLY, RIG RUNNING CASING
Assessment Of Location Safety Meeting	05/27/2009 03:35							SPOT EQUIPMENT AND USED TARP UNDER PUMP.
Pre-Rig Up Safety Meeting	05/27/2009 03:55							ENTIRE CREW, WALKED THROUGH RIG UP LOOKING FOR HAZARDS.
Rig-Up Equipment	05/27/2009 04:00							1 PICK UP, 1 HT400 PUMP TRUCK, 1 BULK CEMENT STORAGE BIN, 1 COMPACT HEAD WITH PLUG.
Pre-Job Safety Meeting	05/27/2009 08:00							ENTIRE CREW, CO REP, AND RIG CREW
Start Job	05/27/2009 08:28							TD 6337 TP 6307 SJ 46.13 FC 6260.87 MW 10.4 PPG, 4 1/2" 11.6# CSG IN 7 7/8" HOLE. SURFACE CASING AT 1030.
Pump Water	05/27/2009 08:28		2	2			264.0	FILL LINES BEFORE TESTING
Pressure Test	05/27/2009 08:30		0.5	0.2			4380. 0	PRESSURE HELD NO LEAKS

Cementing Job Log

Activity Description	Date/Time	Cht #	Rate bbl/ min	Volume bbl		Pressure psig		Comments
				Stage	Total	Tubing	Casing	
Pump Spacer 1	05/27/2009 08:31		7	40			850.0	FRESH WATER WITH DYE AND POLYFLAKE, PUMPED AT 4 BPM UNTIL CEMENT TUB UP AND WEIGHED WITH SCALES, SPED RATE TO 7 BPM AT 27 BBLS GONE.
Pump Lead Cement	05/27/2009 08:40		7	94			1000.0	330 SKS VARICEM, 12.8 PPG, 1.6 CUFT/SK, 7.31 GAL/SK, SLOWED RATE TO 6 BPM TO MAINTAIN DENSITY 10 BBLS INTO LEAD, REMAINED AT 6 BPM.
Pump Tail Cement	05/27/2009 08:57		7	170			389.0	650 SKS VARICEM, 13.2 PPG, 1.47 CUFT/SK, 6.32 GAL/SK, SPED RATE TO 7 BPM 10 BBLS INTO TAIL THEN SLOWED BACK TO 6 BPM AT 120 BBLS GONE TO MAINTAIN DENSITY.
Shutdown	05/27/2009 09:25							6x5 GAUGE READ 10 PSI ON WATER AND 15 PSI ON CEMENT, 4x4 GAUGE READ 90 PSI.
Clean Lines	05/27/2009 09:26							CLEAN LINES AND PUMP BEFORE DROPPING PLUG
Drop Top Plug	05/27/2009 09:29							VERIFIED PLUG LEFT
Pump Displacement	05/27/2009 09:30		8	97			1780.0	KCL WATER, 1.5 SKS KCL PER 10 BBLS. CAUGHT PRESSURE AT 17 BBLS GONE. GOT RED DYE TO SURFACE THE LAST 10 BBLS OF DISPLACEMENT.
Slow Rate	05/27/2009 09:42		2	87			1500.0	SLOW RATE TO BUMP PLUG
Bump Plug	05/27/2009 09:46		2	97			2575.0	PLUG LANDED, BUMPED 1000 PSI OVER PER CO REP TO 2575 PSI.

Sold To #: 338668

Ship To #: 2713367

Quote #:

Sales Order #:

6690454

SUMMIT Version: 7.20.130

Wednesday, May 27, 2009 10:40:00

Cementing Job Log

Activity Description	Date/Time	Cht #	Rate bbl/ min	Volume bbl		Pressure psig		Comments
				Stage	Total	Tubing	Casing	
Check Floats	05/27/2009 09:50							FLOATS HELD, WHEN RELEASED PRESSURE GOT 1 BBL OF WATER BACK TO TRUCK.
End Job	05/27/2009 09:51							GOOD RETURNS THROUGHOUT JOB, DID NOT MOVE PIPE
Post-Job Safety Meeting (Pre Rig-Down)	05/27/2009 10:00							ENTIRE CREW
Rig-Down Equipment	05/27/2009 10:30							BLEW DOWN BIN
Pre-Convoy Safety Meeting	05/27/2009 11:25							ENTIRE CREW
Crew Leave Location	05/27/2009 11:30							THANK YOU FOR USING HALLIBURTON, ERIC STILLSON AND CREW.

Sold To # : 338668

Ship To # : 2713367

Quote # :

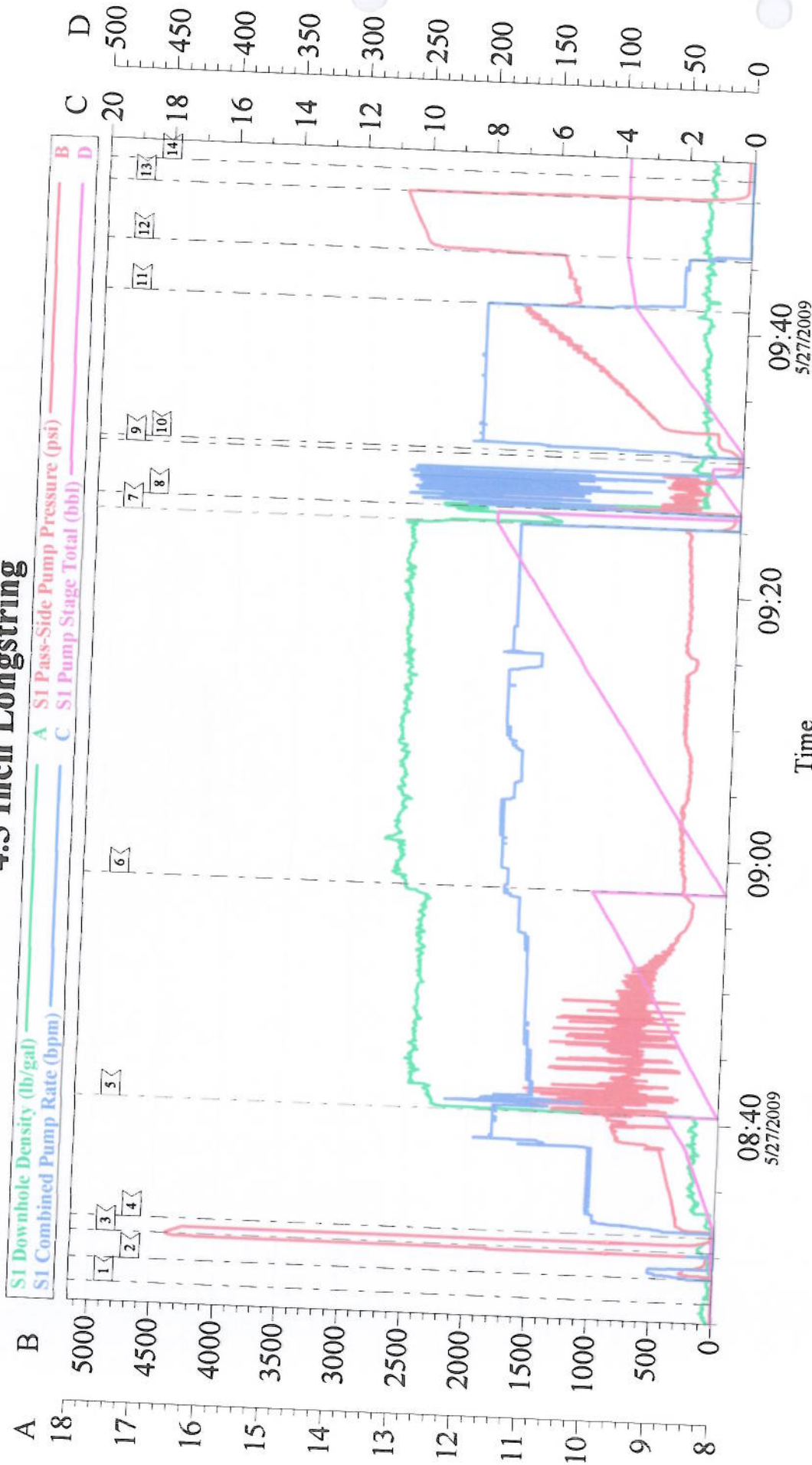
Sales Order # :

6690454

SUMMIT Version: 7.20.130

Wednesday, May 27, 2009 10:40:00

4.5 Inch Longstring



Local Event Log			
1 START JOB	08:26:31	2 PRIME LINES	08:28:18
4 PUMP H2O SPACER	08:31:29	5 PUMP LEAD CEMENT	08:40:35
7 SHUT DOWN	09:25:10	8 WASH LINES	09:26:18
10 PUMP DISPLACEMENT	09:30:42	11 SLOW RATE	09:41:41
13 CHECK FLOATS	09:49:56	14 END JOB	09:51:35
3 PRESSURE TEST	08:30:20	6 PUMP TAIL CEMENT	08:57:30
9 DROP PLUG	09:30:17	12 BUMP PLUG	09:45:32

Customer:	CHEVRON - MID-CONTINENT EBIZ	Job Date:	27-May-2009	Sales Order #:	6690454
Well Description:	Skinner Ridge 698-09-AV-24	Job Type:	Production	ADC Used:	Yes
Company Rep:	Ronnie Moeller	Cement Supervisor:	Eric Stillson	Elite #/Operator:	11, Ed White