
CHEVRON - MID-CONTINENT EBIZ

**SKR 698-09-AV-24
SKINNER RIDGE
Garfield County , Colorado**

Cement Surface Casing
09-May-2009

Job Site Documents

The Road to Excellence Starts with Safety

Sold To #: 338668	Ship To #: 2713367	Quote #:	Sales Order #: 6663253
Customer: CHEVRON - MID-CONTINENT EBIZ	Customer Rep: DOHERTY, ED		
Well Name: SKR	Well #: 698-09-AV-24	API/UWI #: 05-045-18438	
Field: SKINNER RIDGE	City (SAP): PARACHUTE	County/Parish: Garfield	State: Colorado
Lat: N 39.551 deg. OR N 39 deg. 33 min. 3.323 secs.	Long: W 108.33 deg. OR W -109 deg. 40 min. 12.799 secs.		
Contractor: CHEVRON	Rig/Platform Name/Num: H&P 318		
Job Purpose: Cement Surface Casing			
Well Type: Development Well	Job Type: Cement Surface Casing		
Sales Person: DUNNING, DUSTIN	Srv Supervisor: STILLSON, ERIC	MBU ID Emp #: 393789	

Job Personnel

HES Emp Name	Exp Hrs	Emp #	HES Emp Name	Exp Hrs	Emp #	HES Emp Name	Exp Hrs	Emp #
BROST, ROBERT W	10	394382	FEUERBORN, JOHN William	10	381677	ROCKERT, CHRISTOPHER Michael	10	332914
STILLSON, ERIC W	10	393789	WHITE, EDWARD W	10	424173			

Equipment

HES Unit #	Distance-1 way	HES Unit #	Distance-1 way	HES Unit #	Distance-1 way	HES Unit #	Distance-1 way
10829462	120 mile	10872429	120 mile	10897909	120 mile	11021972	120 mile
11027039	120 mile						

Job Hours

Date	On Location Hours	Operating Hours	Date	On Location Hours	Operating Hours	Date	On Location Hours	Operating Hours
05-09-09	6	1						

TOTAL

Total is the sum of each column separately

Job

Job Times

Formation Name						Date	Time	Time Zone
Formation Depth (MD)	Top		Bottom		Called Out	09 - May - 2009	13:00	MST
Form Type		BHST			On Location	09 - May - 2009	16:00	MST
Job depth MD	1045. ft		Job Depth TVD	1045. ft	Job Started	09 - May - 2009	20:01	MST
Water Depth			Wk Ht Above Floor	4. ft	Job Completed	09 - May - 2009	20:47	MST
Perforation Depth (MD)	From		To		Departed Loc	09 - May - 2009	22:30	MST

Well Data

Description	New / Used	Max pressure psig	Size in	ID in	Weight lbm/ft	Thread	Grade	Top MD ft	Bottom MD ft	Top TVD ft	Bottom TVD ft
12 1/2 Open Hole Section				12.25					1045.		
8 5/8 Surface Casing	Unknown		8.625	8.097	24.				1035.		

Sales/Rental/3rd Party (HES)

Description	Qty	Qty uom	Depth	Supplier
PLUG,CMTG,TOP,8 5/8,HWE,7.20 MIN/8.09 MA	1	EA		
PORT. DAS W/CEMWIN;ACQUIRE W/HES, ZI	1	JOB		
ADC (AUTO DENSITY CTRL) SYS, /JOB,ZI	1	JOB		

Tools and Accessories

Type	Size	Qty	Make	Depth	Type	Size	Qty	Make	Depth	Type	Size	Qty	Make
Guide Shoe					Packer					Top Plug	8.625	1	
Float Shoe					Bridge Plug					Bottom Plug			
Float Collar					Retainer					SSR plug set			
Insert Float										Plug Container	8.625	1	
Stage Tool										Centralizers			

Miscellaneous Materials													
Gelling Agt		Conc		Surfactant		Conc		Acid Type		Qty		Conc	%
Treatment Fld		Conc		Inhibitor		Conc		Sand Type		Size		Qty	
Fluid Data													
Stage/Plug #: 1													
Fluid #	Stage Type	Fluid Name	Qty	Qty uom	Mixing Density lbm/gal	Yield ft ³ /sk	Mix Fluid Gal/sk	Rate bbl/min	Total Mix Fluid Gal/sk				
1	PolyFlake Dyed Spacer		30.00	bbl	8.33	.0	.0	6.0					
2	VersaCem Lead Cement	VERSACEM (TM) SYSTEM (452010)	140.0	sacks	12.3	2.11	13.76	6.0	13.42				
	0.125 lbm	POLY-E-FLAKE (101216940)											
	0.25 %	D-AIR 3000 (101007446)											
	13.418 Gal	FRESH WATER											
3	VersaCem Tail Cement	VERSACEM (TM) SYSTEM (452010)	150.0	sacks	12.8	2.11	11.79	6.0	11.46				
	0.125 lbm	POLY-E-FLAKE (101216940)											
	0.25 %	D-AIR 3000 (101007446)											
	11.456 Gal	FRESH WATER											
4	Fresh Water Displacement		63.00	bbl	8.33	.0	.0	8.0					
Calculated Values			Pressures			Volumes							
Displacement	63	Shut In: Instant		Lost Returns	0	Cement Slurry	116	Pad					
Top Of Cement	SURFACE	5 Min		Cement Returns	35	Actual Displacement	63	Treatment					
Frac Gradient		15 Min		Spacers	30	Load and Breakdown		Total Job					
Rates													
Circulating	RIG	Mixing	6	Displacement	8	Avg. Job	7						
Cement Left In Pipe	Amount	44 ft	Reason	Shoe Joint									
Frac Ring # 1 @	ID	Frac ring # 2 @	ID	Frac Ring # 3 @	ID	Frac Ring # 4 @	ID						
The Information Stated Herein Is Correct				Customer Representative Signature									

The Road to Excellence Starts with Safety

Sold To #: 338668	Ship To #: 2713367	Quote #:	Sales Order #: 6663253
Customer: CHEVRON - MID-CONTINENT EBIZ		Customer Rep: DOHERTY, ED	
Well Name: SKR	Well #: 698-09-AV-24	API/UWI #: 05-045-18438	
Field: SKINNER RIDGE	City (SAP): PARACHUTE	County/Parish: Garfield	State: Colorado
Legal Description:			
Lat: N 39.551 deg. OR N 39 deg. 33 min. 3.323 secs.		Long: W 108.33 deg. OR W -109 deg. 40 min. 12.799 secs.	
Contractor: CHEVRON	Rig/Platform Name/Num: H&P 318		
Job Purpose: Cement Surface Casing			Ticket Amount:
Well Type: Development Well	Job Type: Cement Surface Casing		
Sales Person: DUNNING, DUSTIN	Srv Supervisor: STILLSON, ERIC	MBU ID Emp #: 393789	

Activity Description	Date/Time	Cht #	Rate bbl/min	Volume bbl		Pressure psig		Comments
				Stage	Total	Tubing	Casing	
Call Out	05/09/2009 13:00							ELITE#11 8 5/8" SURFACE .
Pre-Convoy Safety Meeting	05/09/2009 14:30							ENTIRE CREW, NO CELL PHONES, WATCH FOLLOWING DISTANCE, SEAT BELTS AND HEADLIGHTS ON.
Arrive At Loc	05/09/2009 16:00							ARRIVED EARLY. RIG RUNNING CASING
Assessment Of Location Safety Meeting	05/09/2009 16:05							SPOT EQUIPMENT AND USE TARP UNDER PUMP.
Pre-Rig Up Safety Meeting	05/09/2009 16:25							ENTIRE CREW, WALKED THROUGH RIG UP LOOKING FOR HAZARDS.
Rig-Up Equipment	05/09/2009 16:30							1 PICK UP, 1 HT400 PUMP TRUCK, 1 660 BULK CEMENT TRUCK, 1 COMPACT HEAD WITH PLUG.
Pre-Job Safety Meeting	05/09/2009 19:30							ENTIRE CREW, CO REP AND RIG CREW
Start Job	05/09/2009 20:01							TD 1045 TP 1035 SJ 44 FC 991 MW 9.2 PPG, 8 5/8" 24# CSG IN 12 1/4" HOLE.
Pump Water	05/09/2009 20:01		1	1			15.0	FILL LINES BEFORE TESTING
Pressure Test	05/09/2009 20:03		0.5	0.2			2500.0	PRESSURE HELD NO LEAKS

Cementing Job Log

Activity Description	Date/Time	Cht #	Rate bbl/min	Volume bbl		Pressure psig		Comments
				Stage	Total	Tubing	Casing	
Pump Spacer 1	05/09/2009 20:05		6	30			160.0	FRESH WATER WITH DYE AND POLYFLAKE. PUMPED AT 4 BPM UNTIL CEMENT TUB UP AND WEIGHED WITH SCALES, SPED TO 6 BPM AT 25 BBLS GONE
Pump Lead Cement	05/09/2009 20:13		6	59.3			195.0	140 SKS VERSACEM, 12.3 PPG, 2.38 CUFT/SK, 13.75 GAL/SK.
Pump Tail Cement	05/09/2009 20:23		6	56.4			180.0	150 SKS VERSACEM, 12.8 PPG, 2.11 CUFT/SK, 11.75 GAL/SK.
Shutdown	05/09/2009 20:32							6X5 GAUGE READ 10 PSI ON WATER AND 15 PSI ON CEMENT. 4X4 GAUGE READ 90 PSI.
Drop Top Plug	05/09/2009 20:33							VERIFIED PLUG LEFT
Pump Displacement	05/09/2009 20:34		8	63			410.0	FRESH WATER, CEMENT TO SURFACE AT 28 BBLS GONE, 35 BBLS OF CEMENT TO SURFACE
Slow Rate	05/09/2009 20:40		2	53			235.0	SLOW RATE TO BUMP PLUG
Bump Plug	05/09/2009 20:45		2	63			1275.0	PLUG LANDED, BUMPED 1000 PSI OVER AND HELD FOR 1 MIN PER CO REP.
Check Floats	05/09/2009 20:46							FLOATS HELD, WHEN RELEASED PRESSURE GOT BBLS OF WATER BACK TO TRUCK.
End Job	05/09/2009 20:47							GOOD RETURNS THROUGHOUT JOB, DID NOT MOVE PIPE.
Post-Job Safety Meeting (Pre Rig-Down)	05/09/2009 20:50							ENTIRE CREW
Rig-Down Equipment	05/09/2009 21:00							
Pre-Convoy Safety Meeting	05/09/2009 22:25							ENTIRE CREW

HALLIBURTON

Cementing Job Log

Activity Description	Date/Time	Cht #	Rate bbl/ min	Volume bbl		Pressure psig		Comments
				Stage	Total	Tubing	Casing	
Crew Leave Location	05/09/2009 22:30							THANK YOU FOR USING HALLIBURTON, ERIC STILLSON AND CREW.

Sold To # : 338668

Ship To # :2713367

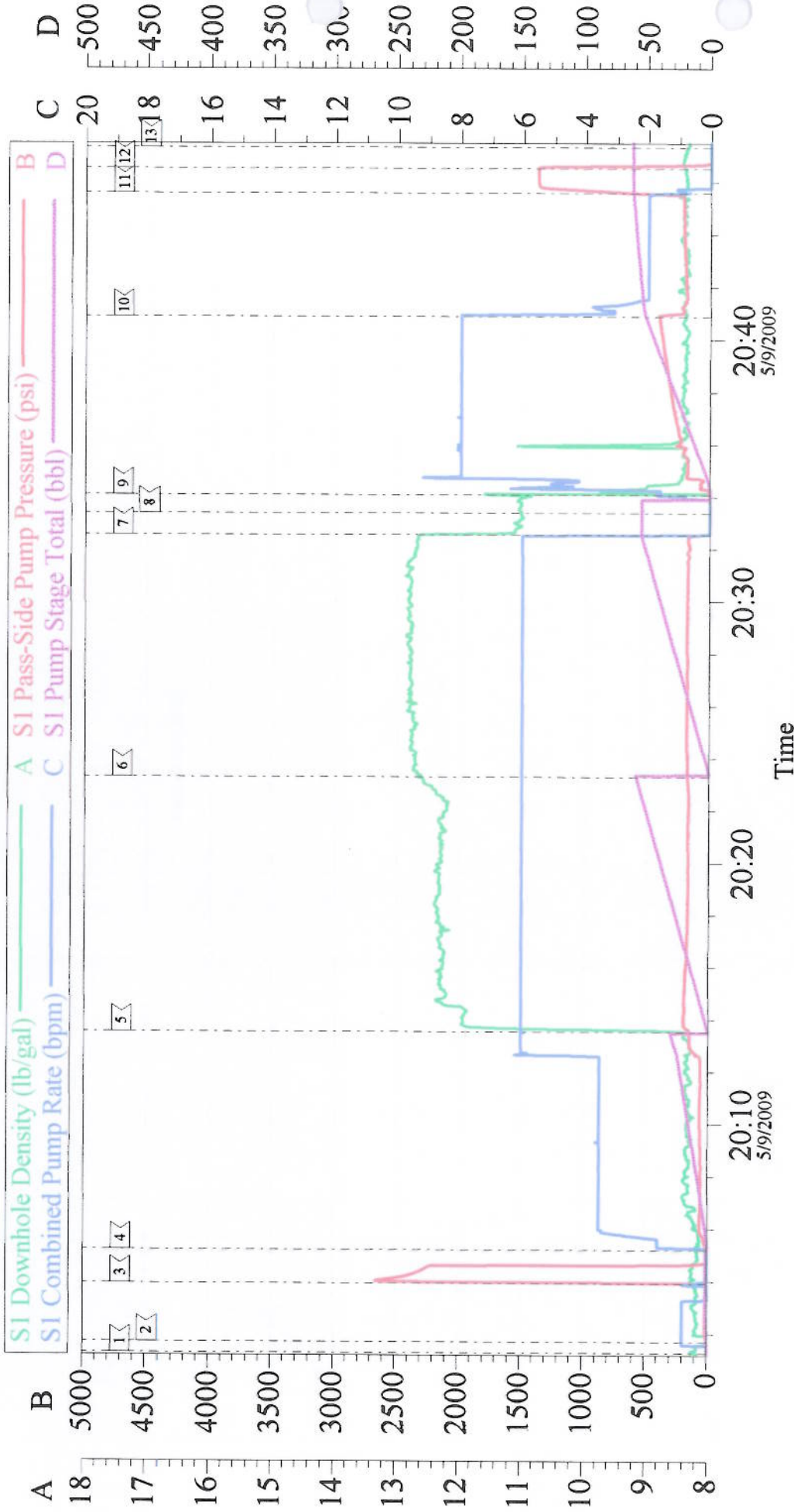
Quote # :

Sales Order # : 6663253

SUMMIT Version: 7.20.130

Saturday, May 09, 2009 09:24:00

CHEVRON 8 5/8 SURFACE



Customer: CHEVRON
Well Description: SKR 698-09-AV-24
Company Rep: ED DOHERTY

Job Date: 09-May-2009
Job Type: SURFACE
Cement Supervisor: ERIC STILLSON

Sales Order #: 6663253
ADC Used: YES
Elite #: 11/ ED WHITE