

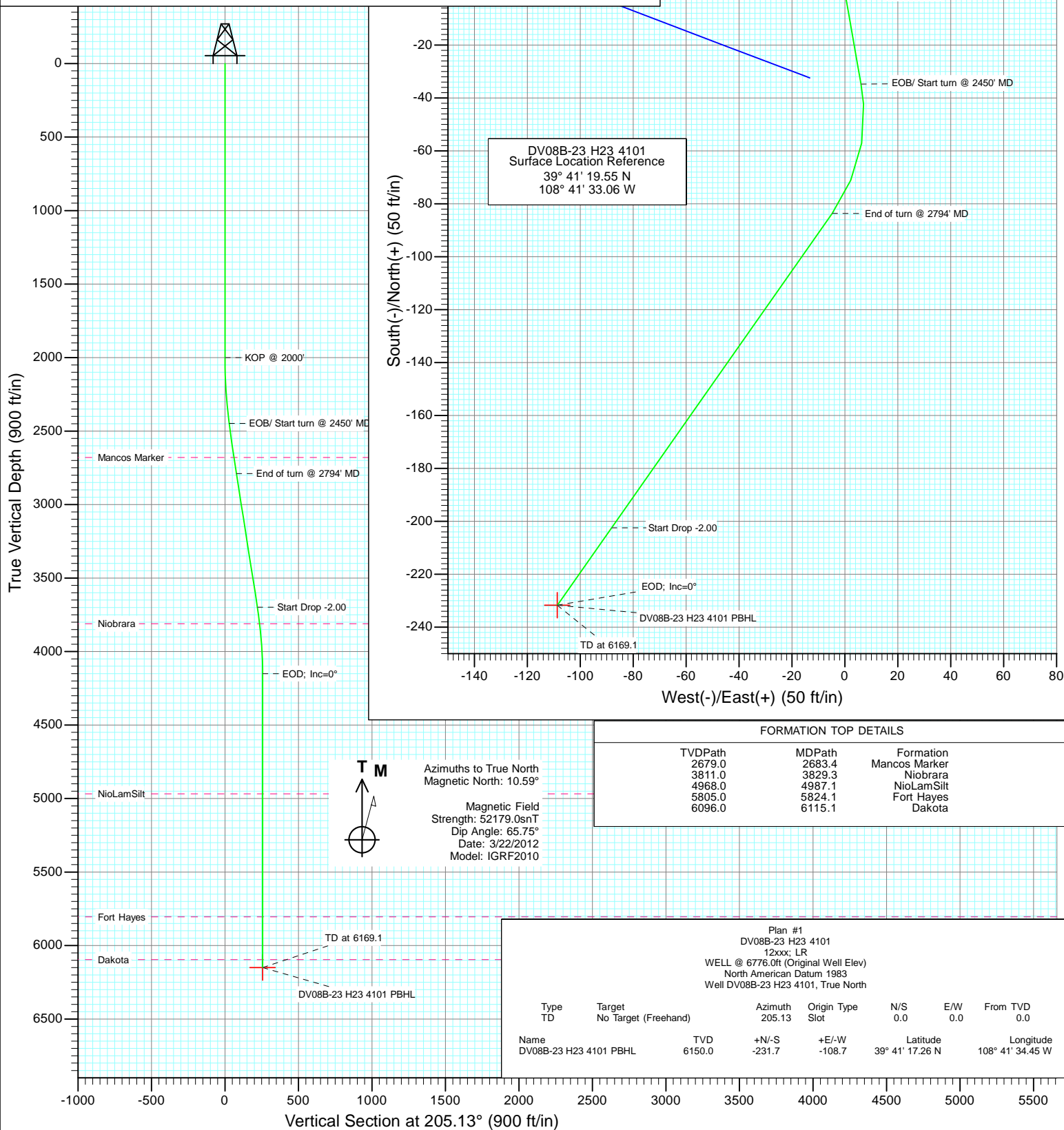


Project: North Piceance  
Site: H23 4101  
Well: DV08B-23 H23 4101  
Wellbore: VH  
Design: Plan #1



#### SECTION DETAILS

Sec	MD	Inc	Azi	TVD	+N/-S	+E/-W	Dleg	TFace	Vsect	Target
1	0.0	0.00	0.00	0.0	0.0	0.0	0.00	0.00	0.0	
2	2000.0	0.00	0.00	2000.0	0.0	0.0	0.00	0.00	0.0	
3	2450.0	9.00	170.00	2448.2	-34.7	6.1	2.00	170.00	28.8	
4	2794.7	9.06	215.04	2789.0	-83.6	-4.8	2.00	111.77	77.7	
5	3715.9	9.06	215.04	3698.6	-202.4	-88.1	0.00	0.00	220.7	
6	4169.1	0.00	0.00	4150.0	-231.7	-108.7	2.00	180.00	255.9	
7	6169.1	0.00	0.00	6150.0	-231.7	-108.7	0.00	0.00	255.9	DV08B-23 H23 4101 PBHL



## Planning Report

<b>Database:</b>	USA EDM 5000 Multi Users DB	<b>Local Co-ordinate Reference:</b>	Well DV08B-23 H23 4101
<b>Company:</b>	EnCana Oil & Gas (USA) Inc	<b>TVD Reference:</b>	WELL @ 6776.0ft (Original Well Elev)
<b>Project:</b>	North Piceance	<b>MD Reference:</b>	WELL @ 6776.0ft (Original Well Elev)
<b>Site:</b>	H23 4101	<b>North Reference:</b>	True
<b>Well:</b>	DV08B-23 H23 4101	<b>Survey Calculation Method:</b>	Minimum Curvature
<b>Wellbore:</b>	VH		
<b>Design:</b>	Plan #1		

<b>Project</b>	North Piceance		
<b>Map System:</b>	US State Plane 1983	<b>System Datum:</b>	Mean Sea Level
<b>Geo Datum:</b>	North American Datum 1983		
<b>Map Zone:</b>	Colorado Central Zone		

Site		H23 4101			
Site Position:		Northing:	1,691,517.95 ft	Latitude:	39° 41' 19.23 N
From:	Lat/Long	Easting:	2,101,712.46 ft	Longitude:	108° 41' 33.23 W
Position Uncertainty:	0.0 ft	Slot Radius:	13.200 in	Grid Convergence:	-2.01 °

Well	DV08B-23 H23 4101					
Well Position	+N/-S	0.0 ft	Northing:	1,691,549.82 ft	Latitude:	39° 41' 19.55 N
	+E/-W	0.0 ft	Easting:	2,101,726.88 ft	Longitude:	108° 41' 33.06 W
Position Uncertainty		0.0 ft	Wellhead Elevation:	ft	Ground Level:	6,754.0 ft

<b>Wellbore</b>	VH				
<b>Magnetics</b>	<b>Model Name</b>	<b>Sample Date</b>	<b>Declination (°)</b>	<b>Dip Angle (°)</b>	<b>Field Strength (nT)</b>
	IGRF2010	3/22/2012	10.59	65.75	52,179

<b>Design</b>	Plan #1			
<b>Audit Notes:</b>				
<b>Version:</b>	<b>Phase:</b>	PLAN	<b>Tie On Depth:</b>	0.0
<b>Vertical Section:</b>	<b>Depth From (TVD) (ft)</b>	<b>+N/-S (ft)</b>	<b>+E/-W (ft)</b>	<b>Direction (°)</b>
	0.0	0.0	0.0	205.13

<b>Plan Sections</b>										
Measured Depth (ft)	Inclination (°)	Azimuth (°)	Vertical Depth (ft)	+N/-S (ft)	+E/-W (ft)	Dogleg Rate (°/100ft)	Build Rate (°/100ft)	Turn Rate (°/100ft)	TFO (°)	Target
0.0	0.00	0.00	0.0	0.0	0.0	0.00	0.00	0.00	0.00	
2,000.0	0.00	0.00	2,000.0	0.0	0.0	0.00	0.00	0.00	0.00	
2,450.0	9.00	170.00	2,448.2	-34.7	6.1	2.00	2.00	0.00	170.00	
2,794.7	9.06	215.04	2,789.0	-83.6	-4.8	2.00	0.02	13.07	111.77	
3,715.9	9.06	215.04	3,698.6	-202.4	-88.1	0.00	0.00	0.00	0.00	
4,169.1	0.00	0.00	4,150.0	-231.7	-108.7	2.00	-2.00	0.00	180.00	
6,169.1	0.00	0.00	6,150.0	-231.7	-108.7	0.00	0.00	0.00	0.00	DV08B-23 H23 4101

# Planning Report

<b>Database:</b>	USA EDM 5000 Multi Users DB	<b>Local Co-ordinate Reference:</b>	Well DV08B-23 H23 4101
<b>Company:</b>	EnCana Oil & Gas (USA) Inc	<b>TVD Reference:</b>	WELL @ 6776.0ft (Original Well Elev)
<b>Project:</b>	North Piceance	<b>MD Reference:</b>	WELL @ 6776.0ft (Original Well Elev)
<b>Site:</b>	H23 4101	<b>North Reference:</b>	True
<b>Well:</b>	DV08B-23 H23 4101	<b>Survey Calculation Method:</b>	Minimum Curvature
<b>Wellbore:</b>	VH		
<b>Design:</b>	Plan #1		

Planned Survey									
Measured Depth (ft)	Inclination (°)	Azimuth (°)	Vertical Depth (ft)	+N/-S (ft)	+E/-W (ft)	Vertical Section (ft)	Dogleg Rate (°/100ft)	Build Rate (°/100ft)	Comments / Formations
0.0	0.00	0.00	0.0	0.0	0.0	0.0	0.00	0.00	
100.0	0.00	0.00	100.0	0.0	0.0	0.0	0.00	0.00	
200.0	0.00	0.00	200.0	0.0	0.0	0.0	0.00	0.00	
300.0	0.00	0.00	300.0	0.0	0.0	0.0	0.00	0.00	
400.0	0.00	0.00	400.0	0.0	0.0	0.0	0.00	0.00	
500.0	0.00	0.00	500.0	0.0	0.0	0.0	0.00	0.00	
600.0	0.00	0.00	600.0	0.0	0.0	0.0	0.00	0.00	
700.0	0.00	0.00	700.0	0.0	0.0	0.0	0.00	0.00	
800.0	0.00	0.00	800.0	0.0	0.0	0.0	0.00	0.00	
900.0	0.00	0.00	900.0	0.0	0.0	0.0	0.00	0.00	
1,000.0	0.00	0.00	1,000.0	0.0	0.0	0.0	0.00	0.00	
1,100.0	0.00	0.00	1,100.0	0.0	0.0	0.0	0.00	0.00	
1,200.0	0.00	0.00	1,200.0	0.0	0.0	0.0	0.00	0.00	
1,300.0	0.00	0.00	1,300.0	0.0	0.0	0.0	0.00	0.00	
1,400.0	0.00	0.00	1,400.0	0.0	0.0	0.0	0.00	0.00	
1,500.0	0.00	0.00	1,500.0	0.0	0.0	0.0	0.00	0.00	
1,600.0	0.00	0.00	1,600.0	0.0	0.0	0.0	0.00	0.00	
1,700.0	0.00	0.00	1,700.0	0.0	0.0	0.0	0.00	0.00	
1,800.0	0.00	0.00	1,800.0	0.0	0.0	0.0	0.00	0.00	
1,900.0	0.00	0.00	1,900.0	0.0	0.0	0.0	0.00	0.00	
2,000.0	0.00	0.00	2,000.0	0.0	0.0	0.0	0.00	0.00	KOP @ 2000'
2,100.0	2.00	170.00	2,100.0	-1.7	0.3	1.4	2.00	2.00	
2,200.0	4.00	170.00	2,199.8	-6.9	1.2	5.7	2.00	2.00	
2,300.0	6.00	170.00	2,299.5	-15.5	2.7	12.8	2.00	2.00	
2,400.0	8.00	170.00	2,398.7	-27.5	4.8	22.8	2.00	2.00	
2,450.0	9.00	170.00	2,448.2	-34.7	6.1	28.8	2.00	2.00	EOB/ Start turn @ 2450' MD
2,500.0	8.68	176.17	2,497.6	-42.3	7.1	35.3	2.00	-0.64	
2,600.0	8.36	189.53	2,596.5	-57.0	6.4	49.0	2.00	-0.32	
2,683.4	8.45	200.94	2,679.0	-68.8	3.2	60.9	2.00	0.11	Mancos Marker
2,700.0	8.51	203.15	2,695.4	-71.0	2.2	63.4	2.00	0.34	
2,794.7	9.06	215.04	2,789.0	-83.6	-4.8	77.7	2.00	0.58	End of turn @ 2794' MD
2,800.0	9.06	215.04	2,794.2	-84.3	-5.3	78.5	0.00	0.00	
2,900.0	9.06	215.04	2,893.0	-97.2	-14.3	94.0	0.00	0.00	
3,000.0	9.06	215.04	2,991.7	-110.1	-23.4	109.6	0.00	0.00	
3,100.0	9.06	215.04	3,090.5	-123.0	-32.4	125.1	0.00	0.00	
3,200.0	9.06	215.04	3,189.2	-135.9	-41.5	140.6	0.00	0.00	
3,300.0	9.06	215.04	3,288.0	-148.8	-50.5	156.1	0.00	0.00	
3,400.0	9.06	215.04	3,386.7	-161.7	-59.5	171.6	0.00	0.00	
3,500.0	9.06	215.04	3,485.5	-174.6	-68.6	187.2	0.00	0.00	
3,600.0	9.06	215.04	3,584.2	-187.5	-77.6	202.7	0.00	0.00	
3,700.0	9.06	215.04	3,683.0	-200.4	-86.7	218.2	0.00	0.00	
3,715.9	9.06	215.04	3,698.6	-202.4	-88.1	220.7	0.00	0.00	Start Drop -2.00
3,800.0	7.38	215.04	3,781.9	-212.3	-95.0	232.5	2.00	-2.00	
3,829.3	6.80	215.04	3,811.0	-215.2	-97.1	236.1	2.00	-2.00	Niobrara
3,900.0	5.38	215.04	3,881.3	-221.4	-101.4	243.5	2.00	-2.00	
4,000.0	3.38	215.04	3,981.0	-227.6	-105.8	251.0	2.00	-2.00	
4,100.0	1.38	215.04	4,080.9	-231.0	-108.2	255.1	2.00	-2.00	
4,169.1	0.00	0.00	4,150.0	-231.7	-108.7	255.9	2.00	-2.00	EOD; Inc=0°
4,200.0	0.00	0.00	4,180.9	-231.7	-108.7	255.9	0.00	0.00	
4,300.0	0.00	0.00	4,280.9	-231.7	-108.7	255.9	0.00	0.00	
4,400.0	0.00	0.00	4,380.9	-231.7	-108.7	255.9	0.00	0.00	
4,500.0	0.00	0.00	4,480.9	-231.7	-108.7	255.9	0.00	0.00	

## Planning Report

<b>Database:</b>	USA EDM 5000 Multi Users DB	<b>Local Co-ordinate Reference:</b>	Well DV08B-23 H23 4101
<b>Company:</b>	EnCana Oil & Gas (USA) Inc	<b>TVD Reference:</b>	WELL @ 6776.0ft (Original Well Elev)
<b>Project:</b>	North Piceance	<b>MD Reference:</b>	WELL @ 6776.0ft (Original Well Elev)
<b>Site:</b>	H23 4101	<b>North Reference:</b>	True
<b>Well:</b>	DV08B-23 H23 4101	<b>Survey Calculation Method:</b>	Minimum Curvature
<b>Wellbore:</b>	VH		
<b>Design:</b>	Plan #1		

Planned Survey									
Measured Depth (ft)	Inclination (°)	Azimuth (°)	Vertical Depth (ft)	+N/-S (ft)	+E/-W (ft)	Vertical Section (ft)	Dogleg Rate (°/100ft)	Build Rate (°/100ft)	Comments / Formations
4,600.0	0.00	0.00	4,580.9	-231.7	-108.7	255.9	0.00	0.00	
4,700.0	0.00	0.00	4,680.9	-231.7	-108.7	255.9	0.00	0.00	
4,800.0	0.00	0.00	4,780.9	-231.7	-108.7	255.9	0.00	0.00	
4,900.0	0.00	0.00	4,880.9	-231.7	-108.7	255.9	0.00	0.00	
4,987.1	0.00	0.00	4,968.0	-231.7	-108.7	255.9	0.00	0.00	NioLamSilt
5,000.0	0.00	0.00	4,980.9	-231.7	-108.7	255.9	0.00	0.00	
5,100.0	0.00	0.00	5,080.9	-231.7	-108.7	255.9	0.00	0.00	
5,200.0	0.00	0.00	5,180.9	-231.7	-108.7	255.9	0.00	0.00	
5,300.0	0.00	0.00	5,280.9	-231.7	-108.7	255.9	0.00	0.00	
5,400.0	0.00	0.00	5,380.9	-231.7	-108.7	255.9	0.00	0.00	
5,500.0	0.00	0.00	5,480.9	-231.7	-108.7	255.9	0.00	0.00	
5,600.0	0.00	0.00	5,580.9	-231.7	-108.7	255.9	0.00	0.00	
5,700.0	0.00	0.00	5,680.9	-231.7	-108.7	255.9	0.00	0.00	
5,800.0	0.00	0.00	5,780.9	-231.7	-108.7	255.9	0.00	0.00	
5,824.1	0.00	0.00	5,805.0	-231.7	-108.7	255.9	0.00	0.00	Fort Hayes
5,900.0	0.00	0.00	5,880.9	-231.7	-108.7	255.9	0.00	0.00	
6,000.0	0.00	0.00	5,980.9	-231.7	-108.7	255.9	0.00	0.00	
6,100.0	0.00	0.00	6,080.9	-231.7	-108.7	255.9	0.00	0.00	
6,115.1	0.00	0.00	6,096.0	-231.7	-108.7	255.9	0.00	0.00	Dakota
6,169.1	0.00	0.00	6,150.0	-231.7	-108.7	255.9	0.00	0.00	TD at 6169.1 - DV08B-23 H23 4101 PBHL

Targets									
Target Name	Dip Angle (°)	Dip Dir. (°)	TVD (ft)	+N/-S (ft)	+E/-W (ft)	Northing (ft)	Easting (ft)	Latitude	Longitude
DV08B-23 H23 4101 PB - hit/miss target - Shape - plan hits target center - Point	0.00	0.00	6,150.0	-231.7	-108.7	1,691,322.09	2,101,610.15	39° 41' 17.26 N	108° 41' 34.45 W

Formations						
Measured Depth (ft)	Vertical Depth (ft)	Name	Lithology	Dip (°)	Dip Direction (°)	
2,683.4	2,679.0	Mancos Marker		0.00		
3,829.3	3,811.0	Niobrara		0.00		
4,987.1	4,968.0	NioLamSilt		0.00		
5,824.1	5,805.0	Fort Hayes		0.00		
6,115.1	6,096.0	Dakota		0.00		

## Planning Report

<b>Database:</b>	USA EDM 5000 Multi Users DB	<b>Local Co-ordinate Reference:</b>	Well DV08B-23 H23 4101
<b>Company:</b>	EnCana Oil & Gas (USA) Inc	<b>TVD Reference:</b>	WELL @ 6776.0ft (Original Well Elev)
<b>Project:</b>	North Piceance	<b>MD Reference:</b>	WELL @ 6776.0ft (Original Well Elev)
<b>Site:</b>	H23 4101	<b>North Reference:</b>	True
<b>Well:</b>	DV08B-23 H23 4101	<b>Survey Calculation Method:</b>	Minimum Curvature
<b>Wellbore:</b>	VH		
<b>Design:</b>	Plan #1		

### Plan Annotations

Measured Depth (ft)	Vertical Depth (ft)	Local Coordinates		Comment
		+N/-S (ft)	+E/-W (ft)	
2,000.0	2,000.0	0.0	0.0	KOP @ 2000'
2,450.0	2,448.2	-34.7	6.1	EOB/ Start turn @ 2450' MD
2,794.7	2,789.0	-83.6	-4.8	End of turn @ 2794' MD
3,715.9	3,698.6	-202.4	-88.1	Start Drop -2.00
4,169.1	4,150.0	-231.7	-108.7	EOD; Inc=0°
6,169.1	6,150.0	-231.7	-108.7	TD at 6169.1