

---

**BILL BARRETT CORPORATION E-BILL**

---

**SCOTT 43C-25-692  
MAMM CREEK  
Garfield County , Colorado**

**Cement Surface Casing**  
**29-Feb-2012**

**Post Job Report**

## The Road to Excellence Starts with Safety

Sold To #: 343492		Ship To #: 2908841		Quote #:		Sales Order #: 9306422	
Customer: BILL BARRETT CORPORATION E-BILL				Customer Rep: Lauer, Casey			
Well Name: SCOTT			Well #: 43C-25-692			API/UWI #: 05-045-21259	
Field: MAMM CREEK		City (SAP): SILT		County/Parish: Garfield		State: Colorado	
Lat: N 39.492 deg. OR N 39 deg. 29 min. 32.626 secs.				Long: W 107.606 deg. OR W -108 deg. 23 min. 40.024 secs.			
Contractor: ProPetro Services Inc.			Rig/Platform Name/Num: ProPetro				
Job Purpose: Cement Surface Casing							
Well Type: Development Well			Job Type: Cement Surface Casing				
Sales Person: METLI, MARSHALL			Srvc Supervisor: SMITH, DUSTIN			MBU ID Emp #: 418015	

### Job Personnel

HES Emp Name	Exp Hrs	Emp #	HES Emp Name	Exp Hrs	Emp #	HES Emp Name	Exp Hrs	Emp #
HYDE, DUSTIN C	4	453940	KUKUS, CHRISTOPHER A	4	413952	SMITH, DUSTIN Michael	4	418015

### Equipment

HES Unit #	Distance-1 way	HES Unit #	Distance-1 way	HES Unit #	Distance-1 way	HES Unit #	Distance-1 way
10567589C	120 mile	10867304	120 mile	10998054	120 mile	11259883	120 mile
11808829	120 mile						

### Job Hours

Date	On Location Hours	Operating Hours	Date	On Location Hours	Operating Hours	Date	On Location Hours	Operating Hours
02/29/12	4	2						

**TOTAL** Total is the sum of each column separately

### Job

Formation Name	Job	Job Times
Formation Depth (MD)	Top Bottom	Date Time Time Zone
Form Type	BHST	On Location 29 - Feb - 2012 11:00 MST
Job depth MD	750. ft	Job Started 29 - Feb - 2012 12:42 MST
Water Depth	Wk Ht Above Floor . ft	Job Completed 29 - Feb - 2012 13:30 MST
Perforation Depth (MD)	From To	Departed Loc 29 - Feb - 2012 15:00 MST

### Well Data

Description	New / Used	Max pressure psig	Size in	ID in	Weight lbm/ft	Thread	Grade	Top MD ft	Bottom MD ft	Top TVD ft	Bottom TVD ft
12 1/4" Open Hole				12.25				.	750.		
9 5/8" Surface Casing	New		9.625	8.921	36.		J-55	.	733.7		

### Sales/Rental/3<sup>rd</sup> Party (HES)

Description	Qty	Qty uom	Depth	Supplier
PLUG,CMTG,TOP,9 5/8,HWE,8.16 MIN/9.06 MA	1	EA		

### Tools and Accessories

Type	Size	Qty	Make	Depth	Type	Size	Qty	Make	Depth	Type	Size	Qty	Make
Guide Shoe					Packer					Top Plug	9 5/8	1	HES
Float Shoe					Bridge Plug					Bottom Plug			
Float Collar					Retainer					SSR plug set			
Insert Float										Plug Container			
Stage Tool										Centralizers			

### Miscellaneous Materials

Gelling Agt	Conc	Surfactant	Conc	Acid Type	Qty	Conc	%
Treatment Fld	Conc	Inhibitor	Conc	Sand Type	Size	Qty	

### Fluid Data

Stage/Plug #: 1

Fluid #	Stage Type	Fluid Name	Qty	Qty uom	Mixing Density lbm/gal	Yield ft <sup>3</sup> /sk	Mix Fluid Gal/sk	Rate bbl/min	Total Mix Fluid Gal/sk
1	Water Spacer		20.00	bbl	8.34	.0	.0	4.0	
2	VersaCem Lead Cement	VERSACEM (TM) SYSTEM (452010)	120.0	sacks	12.3	2.38	13.77	6.0	13.77
	13.77 Gal	FRESH WATER							
3	SwiftCem Tail Cement	SWIFTCEM (TM) SYSTEM (452990)	120.0	sacks	14.2	1.43	6.85	6.0	6.85
	6.85 Gal	FRESH WATER							
4	Displacement		53.2	bbl	8.33			6.0	
<b>Calculated Values</b>		<b>Pressures</b>		<b>Volumes</b>					
Displacement	53.2	Shut In: Instant		Lost Returns	0	Cement Slurry	81.5	Pad	
Top Of Cement	SURFACE	5 Min		Cement Returns	28	Actual Displacement	53.2	Treatment	
Frac Gradient		15 Min		Spacers	20	Load and Breakdown		Total Job	154.7
<b>Rates</b>									
Circulating		Mixing	6	Displacement	6	Avg. Job			6
Cement Left In Pipe	Amount	44.92 ft	Reason	Shoe Joint					
Frac Ring # 1 @	ID	Frac ring # 2 @	ID	Frac Ring # 3 @	ID	Frac Ring # 4 @	ID		
The Information Stated Herein Is Correct				Customer Representative Signature					

*The Road to Excellence Starts with Safety*

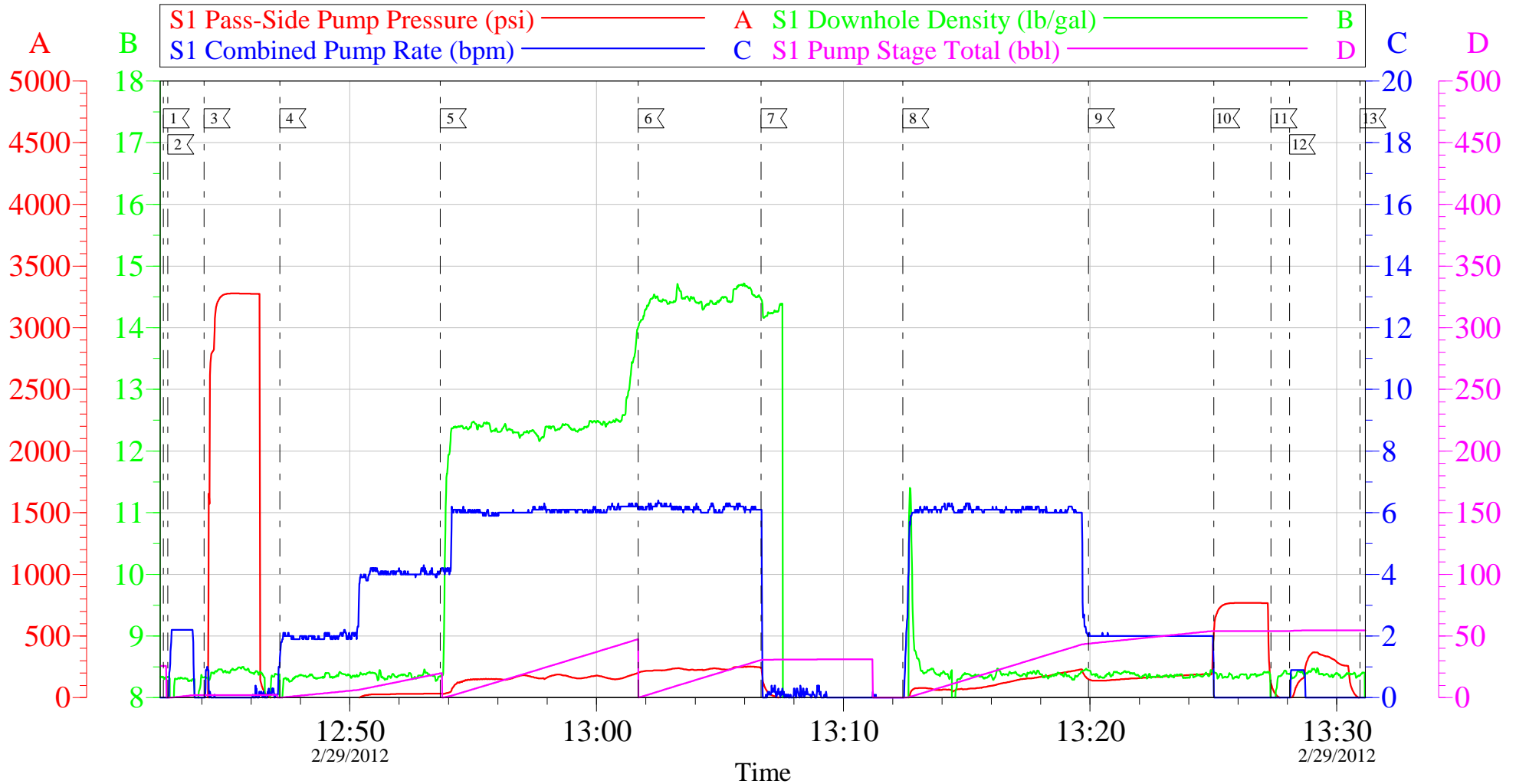
<b>Sold To #:</b> 343492	<b>Ship To #:</b> 2908841	<b>Quote #:</b>	<b>Sales Order #:</b> 9306422
<b>Customer:</b> BILL BARRETT CORPORATION E-BILL		<b>Customer Rep:</b> Lauer, Casey	
<b>Well Name:</b> SCOTT	<b>Well #:</b> 43C-25-692	<b>API/UWI #:</b> 05-045-21259	
<b>Field:</b> MAMM CREEK	<b>City (SAP):</b> SILT	<b>County/Parish:</b> Garfield	<b>State:</b> Colorado
<b>Legal Description:</b>			
<b>Lat:</b> N 39.492 deg. OR N 39 deg. 29 min. 32.626 secs.		<b>Long:</b> W 107.606 deg. OR W -108 deg. 23 min. 40.024 secs.	
<b>Contractor:</b> ProPetro Services Inc.		<b>Rig/Platform Name/Num:</b> ProPetro	
<b>Job Purpose:</b> Cement Surface Casing			<b>Ticket Amount:</b>
<b>Well Type:</b> Development Well		<b>Job Type:</b> Cement Surface Casing	
<b>Sales Person:</b> METLI, MARSHALL		<b>Srv Supervisor:</b> SMITH, DUSTIN	<b>MBU ID Emp #:</b> 418015

Activity Description	Date/Time	Cht #	Rate bbl/min	Volume bbl		Pressure psig		Comments
				Stage	Total	Tubing	Casing	
Call Out	02/28/2012 07:00							ELITE # 3 ALREADY ON LOCATION
Depart Yard Safety Meeting	02/28/2012 09:00							ALL HES EMPLOYEES
Arrive At Loc	02/28/2012 11:00							RIG POOH W/DP
Assessment Of Location Safety Meeting	02/28/2012 11:15							ALL HES EMPLOYEES
Pre-Rig Up Safety Meeting	02/28/2012 11:30							ALL HES EMPLOYEES
Rig-Up Equipment	02/28/2012 11:45							1 F-550 PICKUP 1 HT-400 PUMP TRUCK 1 660 BULK TRUCK
Pre-Job Safety Meeting	02/28/2012 12:30							ALL HES EMPLOYEES AND RIG CREW
Rig-Up Completed	02/28/2012 12:42							
Start Job	02/28/2012 12:42							TD:750 TP: 733.66 SJ: 44.92 9 5/8 36# CSG 12 1/4 OH HOLE DRILLED WITH AIR NO WELL FLUID IN HOLE
Test Lines	02/28/2012 12:44					3290.0		PRESSURE TEST OK
Pump Spacer	02/28/2012 12:47		4	20	20		48.0	FRESH WATER
Pump Lead Cement	02/28/2012 12:53		6	50.9	50.9		195.0	120 SKS 12.3 PPG 2.38 YIELD 13.77 GAL/SK LEAD CEMENT WEIGHT VERIFIED VIA MUD SCALES THROUGHOUT LEAD CEMENT GOT RETURNS 25 BBLS INTO LEAD CEMENT

Activity Description	Date/Time	Cht #	Rate bbl/min	Volume bbl		Pressure psig		Comments
				Stage	Total	Tubing	Casing	
Pump Tail Cement	02/28/2012 13:01		6	30.6	30.6		260.0	120 SKS 14.2 PPG 1.43 YIELD 6.85 GAL/SK TAIL CEMENT WEIGHT VERIFIED VIA MUD SCALES THROUGHOUT LEAD CEMENT
Shutdown	02/28/2012 13:06							
Drop Plug	02/28/2012 13:06							JOB PUMPED THROUGH SWAGE
Pump Displacement	02/28/2012 13:12		6	53.2	53.2		245.0	FRESH WATER
Slow Rate	02/28/2012 13:19		2	43.2	43.2		210.0	SLOW RATE TO BUMP PLUG
Bump Plug	02/28/2012 13:25		2	53.2	53.2		780.0	PSI BEFORE BUMPING PLUG @ 210 PSI BUMPED PLUG UP TO 780 PSI
Check Floats	02/28/2012 13:27							FLOATS HELD 1/2 BBL BACK TO DISPLACEMENT TANKS 28 BBLS CEMENT TO SURFACE RIG USED NO SUGAR
End Job	02/28/2012 13:30							PRESSURE UP TO 200 PSI AND SHUT IN WELL AT 2 INCH ON SWAGE
Pre-Rig Down Safety Meeting	02/28/2012 13:35							ALL HES EMPLOYEES
Rig-Down Equipment	02/28/2012 13:40							LEFT 2 INCH AND SWAGE ON LOCATION
Pre-Convoy Safety Meeting	02/29/2012 14:45							ALL HES EMPLOYEES
Crew Leave Location	02/29/2012 15:00							THANK YOU FOR USING HALLIBURTON CEMENT DUSTIN SMITH AND CREW

# BILL BARRETT SCOTT 43C-25-692

9 5/8 SURFACE



## Local Event Log

1 START JOB	12:42:27	2 FILL LINES	12:42:37	3 TEST LINES	12:44:06
4 PUMP H2O SPACER	12:47:10	5 PUMP LEAD CEMENT	12:53:40	6 PUMP TAIL CEMENT	13:01:41
7 SHUTDOWN/ DROP PLUG	13:06:40	8 PUMP DISPLACEMENT	13:12:25	9 SLOW RATE	13:19:56
10 BUMP PLUG	13:25:01	11 CHECK FLOATS	13:27:20	12 PRESSURE UP/ SHUTIN WELL	13:28:05
13 RELEASE PRESSURE/ END JOB	13:30:56				

Customer: BILL BARRETT  
Well Description: SCOTT 43C-25-692  
Company Rep: CASEY LAUER

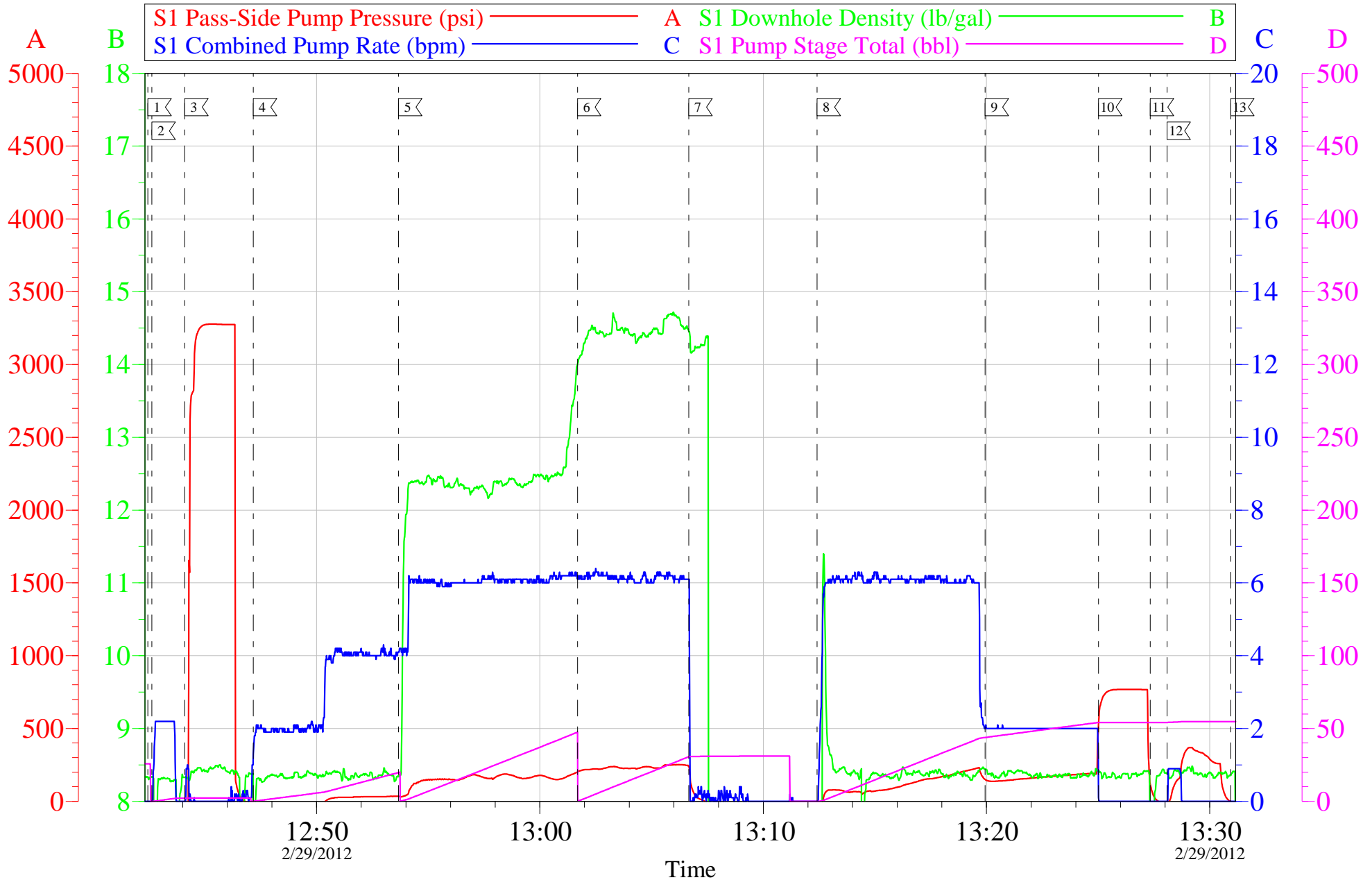
Job Date: 29-Feb-2012  
Job Type: 9 5/8 SURFACE  
Cement Supervisor: DUSTIN SMITH

Sales Order #: 9306422  
ADC Used: YES  
Elite #: 3 CHRIS KUKUS

OptiCem v6.4.10  
29-Feb-12 13:37

# BILL BARRETT SCOTT 43C-25-692

9 5/8 SURFACE



Customer: BILL BARRETT  
Well Description: SCOTT 43C-25-692  
Company Rep: CASEY LAUER

Job Date: 29-Feb-2012  
Job Type: 9 5/8 SURFACE  
Cement Supervisor: DUSTIN SMITH

Sales Order #: 9306422  
ADC Used: YES  
Elite #: 3  
CHRIS KUKUS

OptiCem v6.4.10  
29-Feb-12 13:37

# HALLIBURTON

## Water Analysis Report

Company: BILL BARRETT

Submitted by: DUSTIN SMITH

Attention: J. TROUT/C.MARTINEZ

Lease SCOTT

Well # 43C-25-692

Date: 2/29/2012

Date Rec.: 2/29/2012

S.O.# 9306422

Job Type: SURFACE

Specific Gravity	<i>MAX</i>	<b>1</b>
pH	<i>8</i>	<b>6.8</b>
Potassium (K)	<i>5000</i>	<b>0</b> Mg / L
Calcium (Ca)	<i>500</i>	<b>120</b> Mg / L
Iron (FE2)	<i>300</i>	<b>0</b> Mg / L
Chlorides (Cl)	<i>3000</i>	<b>0</b> Mg / L
Sulfates (SO <sub>4</sub> )	<i>1500</i>	<b>UNDER 200</b> Mg / L
Chlorine (Cl <sub>2</sub> )		<b>0</b> Mg / L
Temp	<i>40-80</i>	<b>45</b> Deg
Total Dissolved Solids		<b>380</b> Mg / L

Respectfully: DUSTIN SMITH

Title: CEMENTING SUPERVISOR

Location: Grand Junction, CO

NOTICE:

This report is limited to the described sample tested. Any person using or relying on this report agrees that Halliburton shall not be liable for any loss or damage whether due to act or omission resulting from such report or its use.



<b>Sales Order #:</b> 9306422	<b>Line Item:</b> 10	<b>Survey Conducted Date:</b> 2/29/2012
<b>Customer:</b> BILL BARRETT CORPORATION E-BILL		<b>Job Type (BOM):</b> CMT SURFACE CASING BOM
<b>Customer Representative:</b>		<b>API / UWI: (leave blank if unknown)</b> 05-045-21259
<b>Well Name:</b> SCOTT		<b>Well Number:</b> 43C-25-692
<b>Well Type:</b> Development Well	<b>Well Country:</b> United States of America	
<b>H2S Present:</b> No	<b>Well State:</b> Colorado	<b>Well County:</b> Garfield

Dear Customer,

We hope that you were satisfied with the service quality of this job performed by Halliburton. It is the aim of our management and service personnel to deliver equipment and service of a standard unmatched in the service sector of the energy industry.

Please take the time to let us know if our performance met with your satisfaction. Please be as critical as possible to ensure we constantly improve our service. Your comments are of great value to us and are intended for the exclusive use of Halliburton.

### CUSTOMER SATISFACTION SURVEY

CATEGORY	CUSTOMER SATISFACTION RESPONSE	
Survey Conducted Date	The date the survey was conducted	2/29/2012
Survey Interviewer	The survey interviewer is the person who initiated the survey.	DUSTIN SMITH (HX37079)
Customer Participation	Did the customer participate in this survey? (Y/N)	No
Customer Representative	Enter the Customer representative name	
HSE	Was our HSE performance satisfactory? Circle Y or N	
Equipment	Were you satisfied with our Equipment? Circle Y or N	
Personnel	Were you satisfied with our people? Circle Y or N	
Customer Comment	Customer's Comment	

CUSTOMER SIGNATURE

<b>Sales Order #:</b> 9306422	<b>Line Item:</b> 10	<b>Survey Conducted Date:</b> 2/29/2012
<b>Customer:</b> BILL BARRETT CORPORATION E-BILL		<b>Job Type (BOM):</b> CMT SURFACE CASING BOM
<b>Customer Representative:</b>		<b>API / UWI: (leave blank if unknown)</b> 05-045-21259
<b>Well Name:</b> SCOTT		<b>Well Number:</b> 43C-25-692
<b>Well Type:</b> Development Well	<b>Well Country:</b> United States of America	
<b>H2S Present:</b> No	<b>Well State:</b> Colorado	<b>Well County:</b> Garfield

*KEY PERFORMANCE INDICATORS*

General	
<b>Survey Conducted Date</b> The date the survey was conducted	2/29/2012

Cementing KPI Survey	
<b>Type of Job</b> Select the type of job. (Cementing or Non-Cementing)	0
<b>Select the Maximum Deviation range for this Job</b> What is the highest deviation for the job you just completed? This may not be the maximum well deviation.	Vertical
<b>Total Operating Time (hours)</b> Total Operating Hours Including Rig-up, Pumping, Rig-down. Enter in decimal format.	2
<b>HSE Incident, Accident, Injury</b> HSE Incident, Accident, Injury. This should be recordable incidents only.	No
<b>Was the job purpose achieved?</b> Was the job delivered correctly as per customer agreed design?	Yes
<b>Operating Hours (Pumping Hours)</b> Total number of hours pumping fluid on this job. Enter in decimal format.	1
<b>Customer Non-Productive Rig Time (hrs)</b> Lost time due to Halliburton in the start, execution, or completion of an ordered service or product, or delays in a follow-on service. Enter in decimal format. 0 if none.	0
<b>Type of Rig Classification Job Was Performed</b> Type Of Rig (classification) Job Was Performed On	Drilling Rig (Portable)
<b>Number Of JSAs Performed</b> Number Of Jsas Performed	6
<b>Number of Unplanned Shutdowns</b> Unplanned shutdown is when injection stops for any period of time.	0
<b>Was this a Primary Cement Job (Yes / No)</b>	Yes

<b>Sales Order #:</b> 9306422	<b>Line Item:</b> 10	<b>Survey Conducted Date:</b> 2/29/2012
<b>Customer:</b> BILL BARRETT CORPORATION E-BILL		<b>Job Type (BOM):</b> CMT SURFACE CASING BOM
<b>Customer Representative:</b>		<b>API / UWI: (leave blank if unknown)</b> 05-045-21259
<b>Well Name:</b> SCOTT		<b>Well Number:</b> 43C-25-692
<b>Well Type:</b> Development Well	<b>Well Country:</b> United States of America	
<b>H2S Present:</b> No	<b>Well State:</b> Colorado	<b>Well County:</b> Garfield

Primary Cement Job= Casing job, Liner job, or Tie-back job.	
<b>Did We Run Wiper Plugs?</b> Did We Run Top And Bottom Casing Wiper Plugs?	Top
<b>Mixing Density of Job Stayed in Designed Density Range (0-100%)</b> Density Range defined as +/- .20 ppg. Calculation: Total BBLs cement mixed at designed density divided by total BBLs of cement multiplied by 100	90
<b>Was Automated Density Control Used?</b> Was Automated Density Control (ADC) Used ?	Yes
<b>Pump Rate (percent) of Job Stayed At Designed Pump Rate</b> Pump Rate range defined as +/- 1bbl/min. Calculation: Total BBLs of fluid pumped at the designed rate divided by Total BBLs of fluid pumped, multiplied by 100	90
<b>Nbr of Remedial Sqz Jobs Rqd - Competition</b> Number Of Remedial Squeeze Jobs Required After Primary Job Performed By Competition	0
<b>Nbr of Remedial Plug Jobs Rqd - HES</b> Number Of Remedial Plug Jobs Needed After Primary Plug Pumped By HES	0
<b>Nbr of Remedial Sqz Jobs Rqd - HES</b> Number Of Remedial Squeeze Jobs Required After Primary Job Performed By HES	0