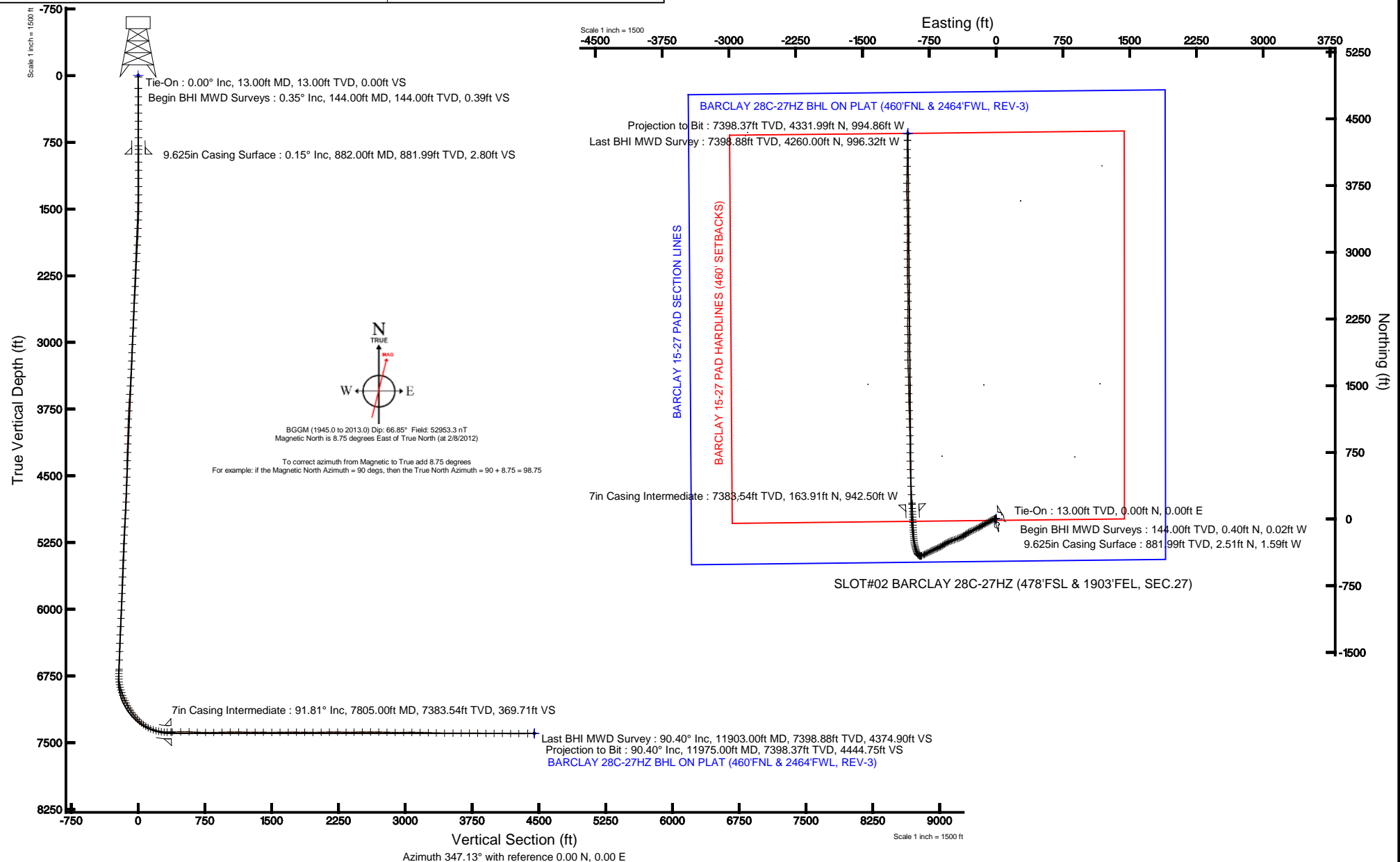


Location:	COLORADO	Slot:	SLOT#02 BARCLAY 28C-27HZ (478'FSL & 1903'FEL, SEC.27)
Field:	WELD COUNTY (KERR MCGEE)	Well:	BARCLAY 28C-27HZ
Facility:	SEC.27-T3N-R66W	Wellbore:	BARCLAY 28C-27HZ PWB
Plot reference wellpath is BARCLAY 28C-27HZ (REV-C.0) PWP			
True vertical depths are referenced to ENSIGN 145 (RKB)		Grid System: NAD83 / Lambert Colorado SP, Northern Zone (501), US feet	
Measured depths are referenced to ENSIGN 145 (RKB)		North Reference: True north	
ENSIGN 145 (RKB) to Mean Sea Level: 4970 feet		Scale: True distance	
Mean Sea Level to Mud line (At Slot: SLOT#02 BARCLAY 28C-27HZ (478'FSL & 1903'FEL, SEC.27)): 0 feet		Depths are in feet	
Coordinates are in feet referenced to Slot		Created by: wilsjef02 on 2/28/2012	





Actual Wellpath Report

BARCLAY 28C-27HZ AWP

Page 1 of 6



REFERENCE WELLPATH IDENTIFICATION			
Operator	KERR-MCGEE OIL & GAS ONSHORE LP	Slot	SLOT#02 BARCLAY 28C-27HZ (478'FSL & 1903'FEL, SEC.27)
Area	COLORADO	Well	BARCLAY 28C-27HZ
Field	WELD COUNTY (KERR MCGEE)	Wellbore	BARCLAY 28C-27HZ AWB
Facility	SEC.27-T3N-R66W		

REPORT SETUP INFORMATION			
Projection System	NAD83 / Lambert Colorado SP, Northern Zone (501), US feet	Software System	WellArchitect® 3.0.2
North Reference	True	User	Wilsjef02
Scale	0.999957	Report Generated	2/28/2012 at 09:01:58
Convergence at slot	0.48° East	Database/Source file	WellArchitectDB/BARCLAY_28C-27HZ_AWB.xml

WELLPATH LOCATION						
	Local coordinates		Grid coordinates		Geographic coordinates	
	North[ft]	East[ft]	Easting[US ft]	Northing[US ft]	Latitude	Longitude
Slot Location	-4347.05	2793.54	3206570.70	1312996.27	40°11'24.745"N	104°45'38.092"W
Facility Reference Pt			3203741.63	1317320.00	40°12'07.704"N	104°46'14.088"W
Field Reference Pt			3197771.84	1268891.29	40°04'09.600"N	104°47'36.000"W

WELLPATH DATUM			
Calculation method	Minimum curvature	ENSIGN 145 (RKB) to Facility Vertical Datum	4970.00ft
Horizontal Reference Pt	Slot	ENSIGN 145 (RKB) to Mean Sea Level	4970.00ft
Vertical Reference Pt	ENSIGN 145 (RKB)	ENSIGN 145 (RKB) to Mud Line at Slot (SLOT#02 BARCLAY 28C-27HZ (478'FSL & 1903'FEL, SEC.27))	4970.00ft
MD Reference Pt	ENSIGN 145 (RKB)	Section Origin	N 0.00, E 0.00 ft
Field Vertical Reference	Mean Sea Level	Section Azimuth	347.13°



Actual Wellpath Report

BARCLAY 28C-27HZ AWP

Page 2 of 6



REFERENCE WELLPATH IDENTIFICATION

Operator	KERR-MCGEE OIL & GAS ONSHORE LP	Slot	SLOT#02 BARCLAY 28C-27HZ (478'FSL & 1903'FEL, SEC.27)
Area	COLORADO	Well	BARCLAY 28C-27HZ
Field	WELD COUNTY (KERR MCGEE)	Wellbore	BARCLAY 28C-27HZ AWB
Facility	SEC.27-T3N-R66W		

WELLPATH DATA (151 stations) † = interpolated/extrapolated station

MD [ft]	Inclination [°]	Azimuth [°]	TVD [ft]	Vert Sect [ft]	North [ft]	East [ft]	Latitude	Longitude	DLS [°/100ft]	Comments
0.00†	0.000	357.380	0.00	0.00	0.00	0.00	40°11'24.745"N	104°45'38.092"W	0.00	
13.00	0.000	357.380	13.00	0.00	0.00	0.00	40°11'24.745"N	104°45'38.092"W	0.00	Tie-On
144.00	0.350	357.380	144.00	0.39	0.40	-0.02	40°11'24.749"N	104°45'38.092"W	0.27	Begin BHI MWD Surveys
236.00	0.740	332.030	235.99	1.24	1.21	-0.31	40°11'24.757"N	104°45'38.096"W	0.49	
328.00	0.410	341.880	327.99	2.15	2.04	-0.69	40°11'24.765"N	104°45'38.101"W	0.37	
420.00	0.190	290.870	419.99	2.56	2.41	-0.94	40°11'24.769"N	104°45'38.104"W	0.35	
512.00	0.060	69.010	511.99	2.65	2.48	-1.03	40°11'24.770"N	104°45'38.105"W	0.26	
604.00	0.090	223.510	603.99	2.62	2.45	-1.04	40°11'24.769"N	104°45'38.105"W	0.16	
696.00	0.110	219.020	695.99	2.52	2.33	-1.14	40°11'24.768"N	104°45'38.107"W	0.02	
788.00	0.290	326.260	787.99	2.68	2.45	-1.33	40°11'24.769"N	104°45'38.109"W	0.37	
830.00	0.170	261.390	829.99	2.79	2.53	-1.45	40°11'24.770"N	104°45'38.111"W	0.63	
972.00	0.120	265.390	971.99	2.83	2.49	-1.81	40°11'24.770"N	104°45'38.115"W	0.04	
1063.00	0.350	314.550	1062.99	3.07	2.67	-2.10	40°11'24.771"N	104°45'38.119"W	0.31	
1155.00	1.280	297.230	1154.98	3.97	3.34	-3.21	40°11'24.778"N	104°45'38.133"W	1.03	
1247.00	2.230	261.850	1246.93	4.78	3.56	-5.90	40°11'24.780"N	104°45'38.168"W	1.52	
1339.00	3.540	249.070	1338.82	4.53	2.29	-10.32	40°11'24.768"N	104°45'38.225"W	1.58	
1431.00	5.000	253.920	1430.56	3.91	0.16	-16.83	40°11'24.747"N	104°45'38.309"W	1.63	
1530.00	6.230	251.420	1529.08	3.13	-2.74	-26.07	40°11'24.718"N	104°45'38.428"W	1.27	
1625.00	7.350	241.090	1623.42	0.94	-7.32	-36.27	40°11'24.673"N	104°45'38.559"W	1.74	
1720.00	8.480	243.440	1717.51	-2.40	-13.39	-47.86	40°11'24.613"N	104°45'38.709"W	1.24	
1814.00	9.420	241.460	1810.37	-6.12	-20.17	-60.81	40°11'24.546"N	104°45'38.876"W	1.05	
1909.00	9.940	238.410	1904.01	-10.85	-28.18	-74.63	40°11'24.467"N	104°45'39.054"W	0.77	
2004.00	9.970	238.860	1997.58	-16.06	-36.73	-88.65	40°11'24.382"N	104°45'39.234"W	0.09	
2099.00	10.440	241.960	2091.08	-20.89	-45.02	-103.29	40°11'24.300"N	104°45'39.423"W	0.76	
2194.00	10.650	243.460	2184.48	-25.22	-52.99	-118.74	40°11'24.221"N	104°45'39.622"W	0.36	
2289.00	9.890	243.430	2277.95	-29.22	-60.56	-133.89	40°11'24.146"N	104°45'39.817"W	0.80	
2384.00	9.950	237.310	2371.54	-33.94	-68.65	-148.09	40°11'24.067"N	104°45'40.000"W	1.11	
2479.00	9.970	236.340	2465.11	-39.64	-77.64	-161.85	40°11'23.978"N	104°45'40.177"W	0.18	
2574.00	8.580	238.830	2558.86	-44.78	-85.86	-174.76	40°11'23.896"N	104°45'40.344"W	1.52	
2669.00	9.310	243.890	2652.71	-48.77	-92.91	-187.72	40°11'23.827"N	104°45'40.511"W	1.13	
2764.00	10.370	245.450	2746.31	-52.26	-99.85	-202.40	40°11'23.758"N	104°45'40.700"W	1.15	
2858.00	11.900	244.300	2838.54	-56.13	-107.57	-218.83	40°11'23.682"N	104°45'40.912"W	1.64	
2952.00	12.470	243.280	2930.42	-60.71	-116.33	-236.62	40°11'23.595"N	104°45'41.141"W	0.65	
3047.00	12.030	243.150	3023.25	-65.56	-125.42	-254.62	40°11'23.506"N	104°45'41.373"W	0.46	
3142.00	11.500	244.280	3116.26	-70.05	-134.00	-271.98	40°11'23.421"N	104°45'41.597"W	0.61	
3237.00	10.260	245.360	3209.55	-73.89	-141.64	-288.21	40°11'23.345"N	104°45'41.806"W	1.32	
3331.00	10.350	239.990	3302.04	-78.08	-149.35	-303.13	40°11'23.269"N	104°45'41.998"W	1.03	
3426.00	9.880	237.760	3395.56	-83.30	-157.97	-317.41	40°11'23.184"N	104°45'42.182"W	0.64	
3521.00	9.510	236.610	3489.20	-88.76	-166.63	-330.86	40°11'23.098"N	104°45'42.355"W	0.44	
3616.00	10.000	235.520	3582.83	-94.54	-175.62	-344.21	40°11'23.009"N	104°45'42.527"W	0.55	
3710.00	10.550	234.920	3675.32	-100.80	-185.19	-357.98	40°11'22.915"N	104°45'42.705"W	0.60	
3805.00	10.030	239.890	3768.79	-106.54	-194.34	-372.25	40°11'22.825"N	104°45'42.889"W	1.08	
3900.00	9.290	244.660	3862.45	-110.65	-201.77	-386.34	40°11'22.751"N	104°45'43.070"W	1.15	
3995.00	9.260	246.990	3956.21	-113.65	-208.04	-400.31	40°11'22.689"N	104°45'43.250"W	0.40	
4090.00	10.380	247.980	4049.81	-116.36	-214.23	-415.28	40°11'22.628"N	104°45'43.443"W	1.19	
4185.00	11.620	248.120	4143.07	-119.22	-221.01	-432.09	40°11'22.561"N	104°45'43.660"W	1.31	
4280.00	12.080	248.380	4236.04	-122.23	-228.24	-450.21	40°11'22.490"N	104°45'43.893"W	0.49	
4375.00	11.340	251.080	4329.06	-124.73	-234.93	-468.29	40°11'22.423"N	104°45'44.126"W	0.97	
4470.00	10.030	252.360	4422.41	-126.40	-240.46	-485.01	40°11'22.369"N	104°45'44.341"W	1.40	
4565.00	10.060	250.570	4515.96	-128.04	-245.73	-500.71	40°11'22.317"N	104°45'44.544"W	0.33	
4659.00	9.510	248.300	4608.59	-130.17	-251.33	-515.67	40°11'22.261"N	104°45'44.737"W	0.71	
4754.00	10.340	246.540	4702.17	-132.94	-257.63	-530.78	40°11'22.199"N	104°45'44.931"W	0.93	
4849.00	10.580	244.040	4795.59	-136.48	-264.84	-546.45	40°11'22.128"N	104°45'45.133"W	0.54	
4944.00	10.200	238.850	4889.03	-141.09	-273.01	-561.49	40°11'22.047"N	104°45'45.327"W	1.06	
5039.00	9.770	234.750	4982.60	-146.80	-282.01	-575.27	40°11'21.958"N	104°45'45.505"W	0.87	
5133.00	9.560	235.600	5075.26	-152.70	-291.03	-588.22	40°11'21.869"N	104°45'45.671"W	0.27	
5228.00	9.460	239.170	5168.96	-158.01	-299.48	-601.44	40°11'21.785"N	104°45'45.842"W	0.63	
5323.00	9.210	240.950	5262.70	-162.53	-307.18	-614.79	40°11'21.709"N	104°45'46.014"W	0.40	
5418.00	9.100	243.300	5356.49	-166.45	-314.24	-628.14	40°11'21.640"N	104°45'46.186"W	0.41	
5513.00	9.970	244.370	5450.18	-170.06	-321.18	-642.27	40°11'21.571"N	104°45'46.368"W	0.93	



Actual Wellpath Report

BARCLAY 28C-27HZ AWP

Page 3 of 6



REFERENCE WELLPATH IDENTIFICATION

Operator	KERR-MCGEE OIL & GAS ONSHORE LP	Slot	SLOT#02 BARCLAY 28C-27HZ (478'FSL & 1903'FEL, SEC.27)
Area	COLORADO	Well	BARCLAY 28C-27HZ
Field	WELD COUNTY (KERR MCGEE)	Wellbore	BARCLAY 28C-27HZ AWB
Facility	SEC.27-T3N-R66W		

WELLPATH DATA (151 stations) † = interpolated/extrapolated station

MD [ft]	Inclination [°]	Azimuth [°]	TVD [ft]	Vert Sect [ft]	North [ft]	East [ft]	Latitude	Longitude	DLS [°/100ft]	Comments
5608.00	9.640	245.360	5543.79	-173.50	-328.05	-656.91	40°11'21.503"N	104°45'46.557"W	0.39	
5703.00	9.630	244.560	5637.45	-176.85	-334.78	-671.32	40°11'21.437"N	104°45'46.742"W	0.14	
5797.00	9.800	246.560	5730.10	-180.03	-341.34	-685.76	40°11'21.372"N	104°45'46.928"W	0.40	
5892.00	9.910	246.860	5823.70	-182.97	-347.77	-700.69	40°11'21.308"N	104°45'47.121"W	0.13	
5987.00	9.830	245.670	5917.29	-186.04	-354.32	-715.60	40°11'21.243"N	104°45'47.313"W	0.23	
6082.00	10.860	244.080	6010.75	-189.67	-361.58	-731.04	40°11'21.172"N	104°45'47.512"W	1.12	
6176.00	11.160	241.320	6103.02	-194.15	-369.81	-746.99	40°11'21.090"N	104°45'47.717"W	0.65	
6271.00	11.020	244.570	6196.25	-198.63	-378.12	-763.25	40°11'21.008"N	104°45'47.927"W	0.67	
6366.00	10.140	241.790	6289.63	-202.81	-385.98	-778.82	40°11'20.931"N	104°45'48.127"W	1.07	
6461.00	9.150	241.980	6383.29	-207.00	-393.48	-792.86	40°11'20.857"N	104°45'48.308"W	1.04	
6556.00	8.830	243.250	6477.12	-210.72	-400.31	-806.04	40°11'20.789"N	104°45'48.478"W	0.40	
6651.00	8.670	246.870	6571.01	-213.75	-406.40	-819.13	40°11'20.729"N	104°45'48.647"W	0.60	
6758.00	9.490	248.800	6676.67	-216.46	-412.76	-834.77	40°11'20.666"N	104°45'48.848"W	0.82	
6776.00	9.410	247.980	6694.43	-216.91	-413.85	-837.52	40°11'20.655"N	104°45'48.884"W	0.87	
6807.00	9.330	248.160	6725.01	-217.71	-415.73	-842.20	40°11'20.637"N	104°45'48.944"W	0.27	
6839.00	9.160	255.740	6756.60	-218.17	-417.33	-847.08	40°11'20.621"N	104°45'49.007"W	3.84	
6871.00	8.990	279.230	6788.21	-217.30	-417.55	-852.02	40°11'20.619"N	104°45'49.070"W	11.51	
6902.00	11.170	291.620	6818.73	-214.68	-416.06	-857.20	40°11'20.633"N	104°45'49.137"W	9.88	
6934.00	13.870	300.020	6849.97	-210.32	-412.99	-863.41	40°11'20.664"N	104°45'49.217"W	10.16	
6966.00	16.820	308.550	6880.83	-204.08	-408.19	-870.35	40°11'20.711"N	104°45'49.307"W	11.58	
6997.00	19.060	318.040	6910.33	-196.15	-401.63	-877.24	40°11'20.776"N	104°45'49.396"W	11.86	
7029.00	20.290	328.300	6940.47	-186.33	-393.02	-883.66	40°11'20.861"N	104°45'49.478"W	11.44	
7061.00	21.610	338.820	6970.36	-175.25	-382.80	-888.70	40°11'20.962"N	104°45'49.543"W	12.44	
7092.00	23.700	343.460	6998.97	-163.38	-371.50	-892.54	40°11'21.074"N	104°45'49.593"W	8.87	
7124.00	26.260	343.100	7027.98	-149.90	-358.56	-896.43	40°11'21.202"N	104°45'49.643"W	8.01	
7155.00	26.750	343.250	7055.72	-136.09	-345.32	-900.43	40°11'21.332"N	104°45'49.694"W	1.60	
7187.00	27.670	344.570	7084.18	-121.49	-331.26	-904.49	40°11'21.471"N	104°45'49.747"W	3.44	
7219.00	30.290	344.810	7112.17	-106.00	-316.31	-908.58	40°11'21.619"N	104°45'49.799"W	8.20	
7250.00	33.380	345.840	7138.50	-89.66	-300.49	-912.71	40°11'21.775"N	104°45'49.853"W	10.12	
7282.00	35.930	348.910	7164.82	-71.47	-282.74	-916.67	40°11'21.951"N	104°45'49.904"W	9.66	
7314.00	37.810	352.830	7190.43	-52.32	-263.79	-919.70	40°11'22.138"N	104°45'49.943"W	9.41	
7345.00	41.040	354.510	7214.37	-32.76	-244.22	-921.86	40°11'22.331"N	104°45'49.971"W	10.97	
7377.00	44.270	356.170	7237.90	-11.31	-222.62	-923.62	40°11'22.545"N	104°45'49.993"W	10.69	
7408.00	46.790	356.460	7259.62	10.53	-200.54	-925.04	40°11'22.763"N	104°45'50.011"W	8.16	
7440.00	50.230	356.880	7280.81	34.16	-176.61	-926.43	40°11'23.000"N	104°45'50.029"W	10.79	
7472.00	53.980	355.660	7300.47	59.09	-151.42	-928.08	40°11'23.248"N	104°45'50.051"W	12.10	
7503.00	57.830	356.300	7317.84	84.45	-125.82	-929.87	40°11'23.501"N	104°45'50.074"W	12.54	
7535.00	63.030	357.610	7333.63	111.86	-98.04	-931.34	40°11'23.776"N	104°45'50.093"W	16.63	
7566.00	66.610	357.570	7346.81	139.45	-70.01	-932.52	40°11'24.053"N	104°45'50.108"W	11.55	
7598.00	70.680	357.680	7358.46	168.74	-40.24	-933.76	40°11'24.347"N	104°45'50.124"W	12.72	
7629.00	75.780	357.390	7367.41	197.93	-10.60	-935.03	40°11'24.640"N	104°45'50.140"W	16.48	
7661.00	80.090	358.130	7374.09	228.68	20.67	-936.25	40°11'24.949"N	104°45'50.156"W	13.66	
7693.00	82.440	357.930	7378.95	259.73	52.27	-937.34	40°11'25.261"N	104°45'50.170"W	7.37	
7724.00	84.970	357.470	7382.35	290.02	83.06	-938.58	40°11'25.566"N	104°45'50.186"W	8.29	
7759.00	89.470	357.660	7384.05	324.39	117.98	-940.06	40°11'25.911"N	104°45'50.205"W	12.87	
7805.00†	91.808	356.257	7383.54	369.71	163.91	-942.50	40°11'26.365"N	104°45'50.237"W	5.93	7" Casing Point
7819.00	92.520	355.830	7383.01	383.53	177.86	-943.47	40°11'26.502"N	104°45'50.249"W	5.93	
7914.00	91.170	356.900	7379.95	477.25	272.62	-949.49	40°11'27.439"N	104°45'50.327"W	1.81	
8008.00	87.560	357.250	7380.99	569.81	366.48	-954.28	40°11'28.366"N	104°45'50.389"W	3.86	
8103.00	87.470	357.050	7385.11	663.28	461.27	-959.00	40°11'29.303"N	104°45'50.449"W	0.23	
8197.00	89.200	358.810	7387.84	755.57	555.16	-962.40	40°11'30.231"N	104°45'50.493"W	2.62	
8292.00	90.910	358.980	7387.75	848.57	650.14	-964.23	40°11'31.169"N	104°45'50.517"W	1.81	
8387.00	91.770	359.810	7385.53	941.37	745.11	-965.23	40°11'32.108"N	104°45'50.530"W	1.26	
8482.00	91.170	359.460	7383.09	1034.09	840.07	-965.84	40°11'33.046"N	104°45'50.538"W	0.73	
8577.00	89.080	358.640	7382.88	1127.03	935.05	-967.41	40°11'33.985"N	104°45'50.558"W	2.36	
8672.00	89.110	357.700	7384.38	1220.26	1029.99	-970.44	40°11'34.923"N	104°45'50.597"W	0.99	
8766.00	89.690	358.980	7385.37	1312.46	1123.94	-973.17	40°11'35.852"N	104°45'50.632"W	1.49	
8861.00	89.350	357.750	7386.16	1405.64	1218.90	-975.88	40°11'36.790"N	104°45'50.667"W	1.34	
8956.00	90.150	358.460	7386.58	1498.90	1313.85	-979.02	40°11'37.728"N	104°45'50.708"W	1.13	
9051.00	90.560	359.300	7385.99	1591.90	1408.83	-980.87	40°11'38.667"N	104°45'50.732"W	0.98	



Actual Wellpath Report

BARCLAY 28C-27HZ AWP

Page 4 of 6



REFERENCE WELLPATH IDENTIFICATION

Operator	KERR-MCGEE OIL & GAS ONSHORE LP	Slot	SLOT#02 BARCLAY 28C-27HZ (478'FSL & 1903'FEL, SEC.27)
Area	COLORADO	Well	BARCLAY 28C-27HZ
Field	WELD COUNTY (KERR MCGEE)	Wellbore	BARCLAY 28C-27HZ AWB
Facility	SEC.27-T3N-R66W		

WELLPATH DATA (151 stations)

MD [ft]	Inclination [°]	Azimuth [°]	TVD [ft]	Vert Sect [ft]	North [ft]	East [ft]	Latitude	Longitude	DLS [°/100ft]	Comments
9145.00	91.260	359.400	7384.50	1683.76	1502.81	-981.94	40°11'39.596"N	104°45'50.746"W	0.75	
9240.00	89.230	358.210	7384.09	1776.79	1597.78	-983.92	40°11'40.534"N	104°45'50.771"W	2.48	
9335.00	89.080	357.590	7385.49	1870.11	1692.70	-987.40	40°11'41.472"N	104°45'50.816"W	0.67	
9430.00	89.690	358.580	7386.51	1963.37	1787.64	-990.58	40°11'42.410"N	104°45'50.857"W	1.22	
9524.00	91.080	0.530	7385.88	2055.16	1881.63	-991.31	40°11'43.339"N	104°45'50.866"W	2.55	
9619.00	91.450	1.450	7383.78	2147.37	1976.59	-989.67	40°11'44.277"N	104°45'50.845"W	1.04	
9714.00	89.080	358.130	7383.34	2240.04	2071.57	-990.01	40°11'45.216"N	104°45'50.850"W	4.29	
9809.00	89.410	359.140	7384.59	2333.12	2166.54	-992.28	40°11'46.154"N	104°45'50.879"W	1.12	
9903.00	90.950	1.470	7384.30	2424.64	2260.52	-991.78	40°11'47.083"N	104°45'50.873"W	2.97	
9998.00	91.410	0.770	7382.34	2516.80	2355.48	-989.92	40°11'48.022"N	104°45'50.849"W	0.88	
10093.00	89.350	359.890	7381.71	2609.28	2450.48	-989.37	40°11'48.960"N	104°45'50.842"W	2.36	
10188.00	88.340	358.280	7383.63	2702.20	2545.44	-990.89	40°11'49.899"N	104°45'50.861"W	2.00	
10282.00	88.830	358.650	7385.95	2794.34	2639.38	-993.41	40°11'50.827"N	104°45'50.894"W	0.65	
10377.00	89.750	358.730	7387.13	2887.40	2734.34	-995.58	40°11'51.766"N	104°45'50.922"W	0.97	
10472.00	90.650	0.580	7386.79	2980.14	2829.34	-996.15	40°11'52.704"N	104°45'50.929"W	2.17	
10567.00	89.880	359.500	7386.36	3072.73	2924.33	-996.08	40°11'53.643"N	104°45'50.929"W	1.40	
10662.00	89.140	359.930	7387.17	3165.44	3019.33	-996.56	40°11'54.582"N	104°45'50.935"W	0.90	
10757.00	87.470	359.840	7389.98	3258.06	3114.28	-996.75	40°11'55.520"N	104°45'50.937"W	1.76	
10851.00	88.730	0.780	7393.09	3349.53	3208.23	-996.24	40°11'56.448"N	104°45'50.931"W	1.67	
10946.00	89.070	0.340	7394.92	3441.91	3303.20	-995.31	40°11'57.387"N	104°45'50.919"W	0.59	
11041.00	89.930	359.160	7395.75	3534.61	3398.20	-995.73	40°11'58.326"N	104°45'50.924"W	1.54	
11136.00	91.010	358.540	7394.97	3627.63	3493.17	-997.63	40°11'59.264"N	104°45'50.949"W	1.31	
11230.00	89.530	357.700	7394.52	3719.90	3587.12	-1000.72	40°12'00.193"N	104°45'50.989"W	1.81	
11325.00	88.890	359.540	7395.83	3812.98	3682.08	-1003.00	40°12'01.131"N	104°45'51.018"W	2.05	
11420.00	89.470	1.440	7397.19	3905.40	3777.06	-1002.19	40°12'02.070"N	104°45'51.008"W	2.09	
11515.00	90.090	0.640	7397.56	3997.61	3872.04	-1000.47	40°12'03.008"N	104°45'50.985"W	1.07	
11610.00	89.100	0.690	7398.23	4089.97	3967.03	-999.36	40°12'03.947"N	104°45'50.971"W	1.04	
11705.00	89.500	0.540	7399.39	4182.34	4062.02	-998.34	40°12'04.886"N	104°45'50.958"W	0.45	
11800.00	90.330	0.310	7399.53	4274.79	4157.01	-997.64	40°12'05.824"N	104°45'50.949"W	0.91	
11903.00	90.400	1.160	7398.88	4374.90	4260.00	-996.32	40°12'06.842"N	104°45'50.932"W	0.83	Last BHI MWD Survey
11975.00	90.400	1.160	7398.37	4444.75	4331.99	-994.86	40°12'07.553"N	104°45'50.913"W	0.00	Projection to Bit

HOLE & CASING SECTIONS - Ref Wellbore: BARCLAY 28C-27HZ AWB Ref Wellpath: BARCLAY 28C-27HZ AWP

String/Diameter	Start MD [ft]	End MD [ft]	Interval [ft]	Start TVD [ft]	End TVD [ft]	Start N/S [ft]	Start E/W [ft]	End N/S [ft]	End E/W [ft]
13.5in Open Hole	13.00	882.00	869.00	13.00	881.99	0.00	0.00	2.51	-1.59
9.625in Casing Surface	13.00	882.00	869.00	13.00	881.99	0.00	0.00	2.51	-1.59
8.75in Open Hole	882.00	7815.00	6933.00	881.99	7383.18	2.51	-1.59	173.88	-943.18
7in Casing Intermediate	13.00	7805.00	7792.00	13.00	7383.54	0.00	0.00	163.91	-942.50
6.125in Open Hole	7805.00	11975.00	4170.00	7383.54	7398.37	163.91	-942.50	4331.99	-994.86



Actual Wellpath Report

BARCLAY 28C-27HZ AWP

Page 5 of 6



REFERENCE WELLPATH IDENTIFICATION

Operator	KERR-MCGEE OIL & GAS ONSHORE LP	Slot	SLOT#02 BARCLAY 28C-27HZ (478'FSL & 1903'FEL, SEC.27)
Area	COLORADO	Well	BARCLAY 28C-27HZ
Field	WELD COUNTY (KERR MCGEE)	Wellbore	BARCLAY 28C-27HZ AWB
Facility	SEC.27-T3N-R66W		

TARGETS

Name	MD [ft]	TVD [ft]	North [ft]	East [ft]	Grid East [US ft]	Grid North [US ft]	Latitude	Longitude	Shape
BARCLAY 15-27 PAD SECTION LINES		-4.00	0.02	0.03	3206570.73	1312996.29	40°11'24.745"N	104°45'38.092"W	polygon
BARCLAY 28C-27HZ BHL ON PLAT (460'FNL & 2464'FWL, REV-2)		7398.00	4337.71	-991.02	3205543.59	1317325.37	40°12'07.610"N	104°45'50.864"W	point
BARCLAY 28C-27HZ BHL ON PLAT (460'FNL & 2464'FWL, REV-3)		7399.00	4337.71	-991.02	3205543.59	1317325.37	40°12'07.610"N	104°45'50.864"W	point
BARCLAY 28C-27HZ BHL ON PLAT (460'FNL & 2464'FWL, REV-1)		7417.00	4337.71	-991.02	3205543.59	1317325.37	40°12'07.610"N	104°45'50.864"W	point
BARCLAY 15-27 PAD HARDLINES (460' SETBACKS)		7418.00	0.02	0.03	3206570.73	1312996.29	40°11'24.745"N	104°45'38.092"W	polygon

WELLPATH COMPOSITION - Ref Wellbore: BARCLAY 28C-27HZ AWB Ref Wellpath: BARCLAY 28C-27HZ AWP

Start MD [ft]	End MD [ft]	Positional Uncertainty Model	Log Name/Comment	Wellbore
13.00	830.00	NaviTrak (Standard)	BHI MWD SURVEYS 13 1/2" HOLE <144-830>	BARCLAY 28C-27HZ AWB
830.00	7759.00	NaviTrak (Standard)	BHI MWD SURVEYS 8 3/4" HOLE <972-7759>	BARCLAY 28C-27HZ AWB
7759.00	11903.00	NaviTrak (Standard)	BHI MWD SURVEY 6 1/8" HOLE <7819-11903>	BARCLAY 28C-27HZ AWB
11903.00	11975.00	Blind Drilling (std)	Projection to bit	BARCLAY 28C-27HZ AWB



Actual Wellpath Report

BARCLAY 28C-27HZ AWP

Page 6 of 6



REFERENCE WELLPATH IDENTIFICATION			
Operator	KERR-MCGEE OIL & GAS ONSHORE LP	Slot	SLOT#02 BARCLAY 28C-27HZ (478'FSL & 1903'FEL, SEC.27)
Area	COLORADO	Well	BARCLAY 28C-27HZ
Field	WELD COUNTY (KERR MCGEE)	Wellbore	BARCLAY 28C-27HZ AWB
Facility	SEC.27-T3N-R66W		

WELLPATH COMMENTS				
MD [ft]	Inclination [°]	Azimuth [°]	TVD [ft]	Comment
13.00	0.000	357.380	13.00	Tie-On
144.00	0.350	357.380	144.00	Begin BHI MWD Surveys
7805.00	91.808	356.257	7383.54	7" Casing Point
11903.00	90.400	1.160	7398.88	Last BHI MWD Survey
11975.00	90.400	1.160	7398.37	Projection to Bit