
BILL BARRETT CORPORATION E-BILL

**GGU 11C-31-691
MAMM CREEK
Garfield County , Colorado**

Cement Surface Casing
23-Feb-2012

Post Job Report

The Road to Excellence Starts with Safety

Sold To #: 343492		Ship To #: 2908819		Quote #:		Sales Order #: 9305773	
Customer: BILL BARRETT CORPORATION E-BILL				Customer Rep: Lauer, Casey			
Well Name: GGU			Well #: 11C-31-691		API/UWI #: 05-045-21253		
Field: MAMM CREEK		City (SAP): SILT		County/Parish: Garfield		State: Colorado	
Lat: N 39.492 deg. OR N 39 deg. 29 min. 32.305 secs.				Long: W 107.606 deg. OR W -108 deg. 23 min. 40.142 secs.			
Contractor: ProPetro Services Inc.			Rig/Platform Name/Num: ProPetro				
Job Purpose: Cement Surface Casing							
Well Type: Development Well			Job Type: Cement Surface Casing				
Sales Person: METLI, MARSHALL			Srvc Supervisor: LEIST, JAMES			MBU ID Emp #: 362787	

Job Personnel

HES Emp Name	Exp Hrs	Emp #	HES Emp Name	Exp Hrs	Emp #	HES Emp Name	Exp Hrs	Emp #
EICKHOFF, ROBERT Edward	3	495311	KEANE, JOHN Donovan	3	486519	LEIST, JAMES R	3	362787
SPARKS, CLIFFORD Paul	3	502476						

Equipment

HES Unit #	Distance-1 way	HES Unit #	Distance-1 way	HES Unit #	Distance-1 way	HES Unit #	Distance-1 way
10567589C	120 mile	10783493	120 mile	10822007	120 mile	11259882	120 mile
11808829	120 mile						

Job Hours

Date	On Location Hours	Operating Hours	Date	On Location Hours	Operating Hours	Date	On Location Hours	Operating Hours
2-23-12	3	3						

TOTAL	Total is the sum of each column separately							
--------------	--	--	--	--	--	--	--	--

Job

Formation Name	Top	Bottom	Called Out	Date	Time	Time Zone
Formation Depth (MD)			On Location	23 - Feb - 2012	14:00	MST
Form Type		BHST	Job Started	23 - Feb - 2012	19:00	MST
Job depth MD	705. ft	Job Depth TVD	Job Completed	23 - Feb - 2012	20:47	MST
Water Depth		Wk Ht Above Floor	Departed Loc	23 - Feb - 2012	21:44	MST
Perforation Depth (MD)	From	To				

Well Data

Description	New / Used	Max pressure psig	Size in	ID in	Weight lbm/ft	Thread	Grade	Top MD ft	Bottom MD ft	Top TVD ft	Bottom TVD ft
12 1/4" Open Hole				12.25				.	830.		
9 5/8" Surface Casing	New		9.625	8.921	36.		J-55	.	813.2		

Sales/Rental/3rd Party (HES)

Description	Qty	Qty uom	Depth	Supplier
PLUG,CMTG,TOP,9 5/8,HWE,8.16 MIN/9.06 MA	1	EA		

Tools and Accessories

Type	Size	Qty	Make	Depth	Type	Size	Qty	Make	Depth	Type	Size	Qty	Make
Guide Shoe					Packer					Top Plug	9.625	1	
Float Shoe					Bridge Plug					Bottom Plug			
Float Collar					Retainer					SSR plug set			
Insert Float										Plug Container			
Stage Tool										Centralizers			

Miscellaneous Materials

Gelling Agt	Conc	Surfactant	Conc	Acid Type	Qty	Conc	%
Treatment Fld	Conc	Inhibitor	Conc	Sand Type	Size	Qty	

Fluid Data

Stage/Plug #: 1

Fluid #	Stage Type	Fluid Name	Qty	Qty uom	Mixing Density lbm/gal	Yield ft ³ /sk	Mix Fluid Gal/sk	Rate bbl/min	Total Mix Fluid Gal/sk
1	Water Spacer	FRESH WATER	20.00	bbl	8.34	.0	.0	2	
2	VersaCem Lead Cement	VERSACEM (TM) SYSTEM (452010)	120.0	sacks	12.3	2.38	13.77	6	13.77
	13.77 Gal	FRESH WATER							
3	SwiftCem Tail Cement	SWIFTCEM (TM) SYSTEM (452990)	120.0	sacks	14.2	1.43	6.85	6	6.85
	6.85 Gal	FRESH WATER							
4	Displacement	FRESH WATER	51.00	bbl	9.			6	
Calculated Values		Pressures		Volumes					
Displacement	51	Shut In: Instant		Lost Returns	0	Cement Slurry	80	Pad	
Top Of Cement	SURFACE	5 Min		Cement Returns	27	Actual Displacement	51	Treatment	
Frac Gradient		15 Min		Spacers	20	Load and Breakdown		Total Job	
Rates									
Circulating		Mixing	6	Displacement	6	Avg. Job		6	
Cement Left In Pipe	Amount	44.9 ft	Reason	Shoe Joint					
Frac Ring # 1 @	ID	Frac ring # 2 @	ID	Frac Ring # 3 @	ID	Frac Ring # 4 @	ID		
The Information Stated Herein Is Correct				Customer Representative Signature					

The Road to Excellence Starts with Safety

Sold To #: 343492	Ship To #: 2908819	Quote #:	Sales Order #: 9305773
Customer: BILL BARRETT CORPORATION E-BILL		Customer Rep: Lauer, Casey	
Well Name: GGU	Well #: 11C-31-691	API/UWI #: 05-045-21253	
Field: MAMM CREEK	City (SAP): SILT	County/Parish: Garfield	State: Colorado
Legal Description:			
Lat: N 39.492 deg. OR N 39 deg. 29 min. 32.305 secs.		Long: W 107.606 deg. OR W -108 deg. 23 min. 40.142 secs.	
Contractor: ProPetro Services Inc.		Rig/Platform Name/Num: ProPetro	
Job Purpose: Cement Surface Casing			Ticket Amount:
Well Type: Development Well		Job Type: Cement Surface Casing	
Sales Person: METLI, MARSHALL		Srvc Supervisor: LEIST, JAMES	MBU ID Emp #: 362787

Activity Description	Date/Time	Cht #	Rate bbl/min	Volume bbl		Pressure psig		Comments
				Stage	Total	Tubing	Casing	
Call Out	02/23/2012 14:00							
Pre-Convoy Safety Meeting	02/23/2012 16:00							WITH ALL HES PERSONNEL
Arrive At Loc	02/23/2012 19:00							
Pre-Rig Up Safety Meeting	02/23/2012 19:30							WITH ALL ON HES PERSONNEL
Rig-Up Completed	02/23/2012 20:00							TP-705.17FT. 9 5/8 36# J-55, TD-725 FT., S.J.-44.9 FT., HOLE- 12 1/4
Pre-Job Safety Meeting	02/23/2012 20:15							WITH ALL ON LOCATION PERSONNEL
Start Job	02/23/2012 20:47							HOLE WAS DRILLED WITH AIR NO, WELL FLUID IN HOLE.
Pressure Test	02/23/2012 20:48							1860 PSI
Pump Spacer	02/23/2012 20:53		2	20			42.0	FRESH WATER
Pump Lead Cement	02/23/2012 21:03		6	50.4			120.0	120 SKS, 12.3 PPG, 2.38 FT3/SK, 13.77GAL/SK
Shutdown	02/23/2012 21:20							
Drop Top Plug	02/23/2012 21:24							JOB PUMPED THROUGH SWEDGE
Pump Displacement	02/23/2012 21:25		6	51			240.0	FRESH WATER
Slow Rate	02/23/2012 21:32		2	41			200.0	TO BUMP PLUG
Bump Plug	02/23/2012 21:37		2	51			205.0	PLUG BUMPED
Activity Description	Date/Time	Cht	Rate bbl/min	Volume bbl		Pressure psig		Comments

Sold To # : 343492

Ship To # :2908819

Quote # :

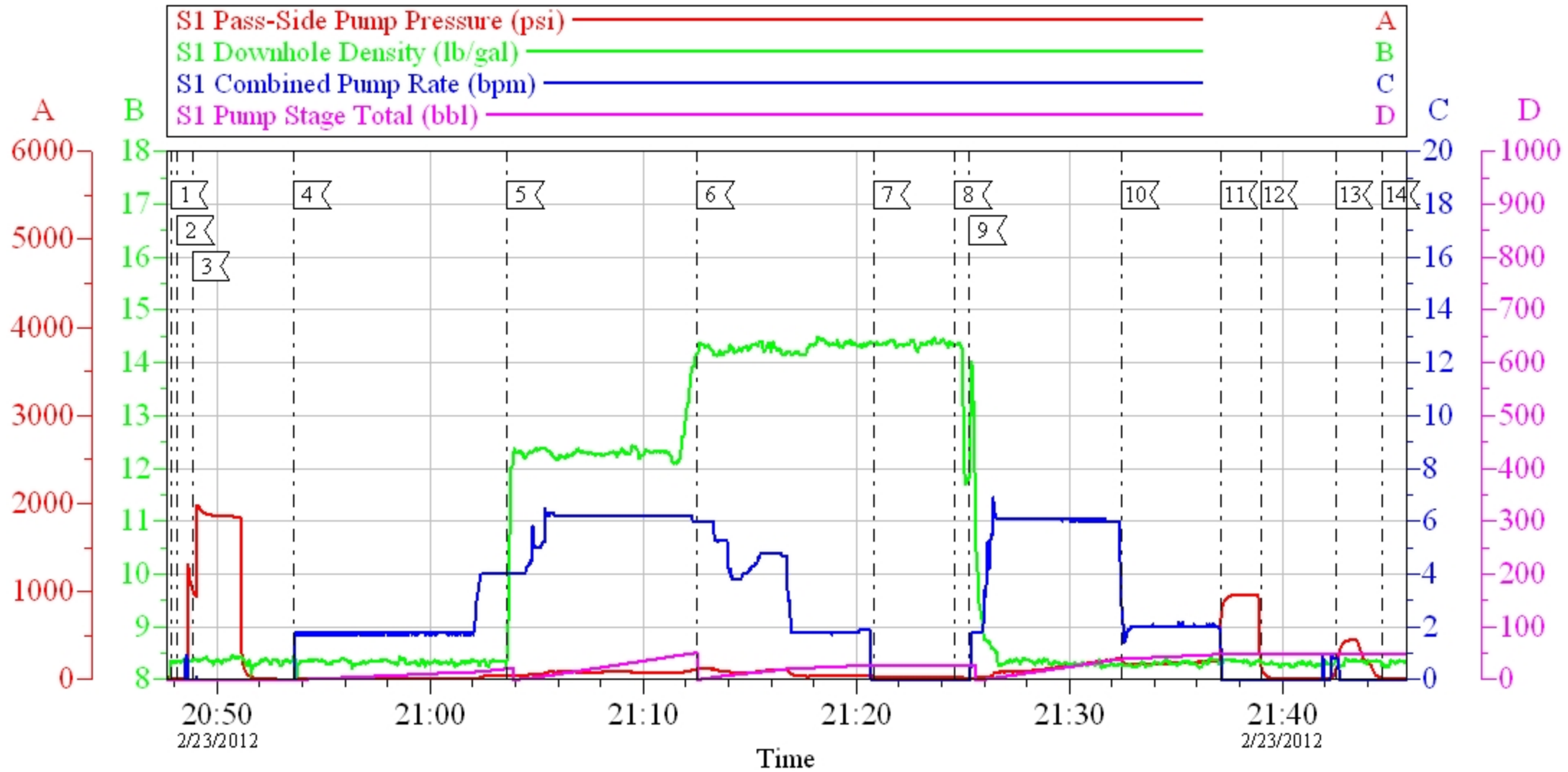
Sales Order # :

9305773

		#		Stage	Total	Tubing	Casing	
Check Floats	02/23/2012 21:38						950.0	FLOATS ARE HOLDING, PRESSURED UP TO 200 PSI AND SHUT IN AT 2 IN. ON SWEDGE
End Job	02/23/2012 21:44							
Pre-Rig Down Safety Meeting	02/23/2012 21:50							WITH ALL HES PERSONNEL
Pump Tail Cement	02/23/2012 22:03		6	30.5			125.0	120 SKS, 14.2 PPG, 1.43 FT3/SK, 6.85 GAL/SK
Comment	02/23/2012 22:03							THANKYOU FOR USING HALLIBURTON CEMENT, JAMES LEIST AND CREW
Rig-Down Completed	02/23/2012 22:30							CREW STAY ON LOCATION UNTILL NEXT JOB

BILL BARRETT GGU 11C-31-691

SURFACE CASING



Local Event Log

1 START JOB	20:47:50	2 FILL LINES (6X5)	20:48:07	3 PRESSURE TEST	20:48:51
4 PUMP H2O SPACER	20:53:36	5 PUMP LEAD CMT	21:03:37	6 PUMP TAIL CMT	21:12:33
7 SHUTDOWN	21:20:49	8 DROP TOP PLUG	21:24:38	9 PUMP DISPLACEMENT	21:25:19
10 SLOW RATE	21:32:29	11 BUMP PLUG	21:37:06	12 CHECK FLOATS	21:38:59
13 REBUMP PLUG/SHUTIN	21:42:30	14 END JOB	21:44:42		

Customer: BILL BARRETT
Well Description: GGU 11C-31-691
Company Rep: CASEY LAUER

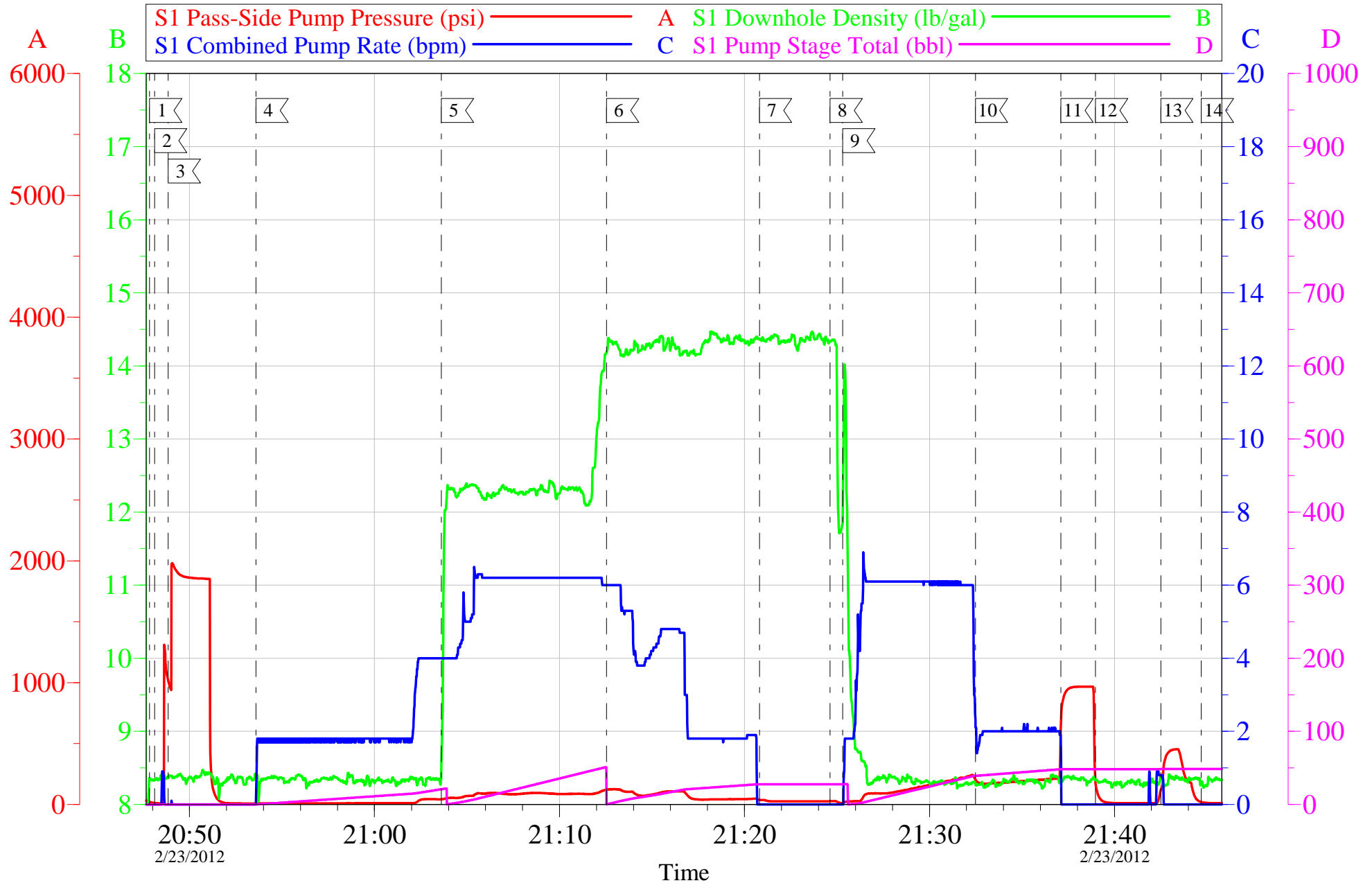
Job Date: 23-Feb-2012
Job Type: SURFACE
Cement Supervisor: JAMES LEIST

Sales Order #: 9305773
ADC Used: YES
Elite #3: ROB EICKHOFF

OptiCern v6.4.9
23-Feb-12 21:58

BILL BARRETT GGU 11C-31-691

SURFACE CASING



Customer:	BILL BARRETT	Job Date:	23-Feb-2012	Sales Order #:	9305773
Well Description:	GGU 11C-31-691	Job Type:	SURFACE	ADC Used:	YES
Company Rep:	CASEY LAUER	Cement Supervisor:	JAMES LEIST	Elite #3:	ROB EICKHOFF

OptiCem v6.4.9
23-Feb-12 21:59

HALLIBURTON

Water Analysis Report

Company: BILL BARRETT

Date: 2/23/2012

Submitted by: J. LEIST

Date Rec.: _____

Attention: LAB TECH

S.O.# 9305773

Lease GGU 11C-31-691

Job Type: SURFACE

Well # 11C-31-691

Specific Gravity	MAX	1
pH	8	6.5
Potassium (K)	5000	0 Mg / L
Calcium (Ca)	500	0 Mg / L
Iron (FE2)	300	2 Mg / L
Chlorides (Cl)	3000	0 Mg / L
Sulfates (SO ₄)	1500	<200 Mg / L
Chlorine (Cl ₂)		0 Mg / L
Temp	40-80	37 Deg
Total Dissolved Solids		500 PPM

Respectfully: JAMES LEIST

Title: CEMENTING SUPERVISOR

Location: GRAND JUNCTION

NOTICE:

This report is limited to the described sample tested. Any person using or relying on this report agrees that Halliburton shall not be liable for any loss or damage whether due to act or omission resulting from such report or its use.

Sales Order #: 9305773	Line Item: 10	Survey Conducted Date: 2/24/2012
Customer: BILL BARRETT CORPORATION E-BILL		Job Type (BOM): CMT SURFACE CASING BOM
Customer Representative: CASEY LAUER		API / UWI: (leave blank if unknown) 05-045-21253
Well Name: GGU		Well Number: 11C-31-691
Well Type: Development Well	Well Country: United States of America	
H2S Present: No	Well State: Colorado	Well County: Garfield

Dear Customer,

We hope that you were satisfied with the service quality of this job performed by Halliburton. It is the aim of our management and service personnel to deliver equipment and service of a standard unmatched in the service sector of the energy industry.

Please take the time to let us know if our performance met with your satisfaction. Please be as critical as possible to ensure we constantly improve our service. Your comments are of great value to us and are intended for the exclusive use of Halliburton.

CUSTOMER SATISFACTION SURVEY

CATEGORY	CUSTOMER SATISFACTION RESPONSE	
Survey Conducted Date	The date the survey was conducted	2/24/2012
Survey Interviewer	The survey interviewer is the person who initiated the survey.	JAMES LEIST (HX18202)
Customer Participation	Did the customer participate in this survey? (Y/N)	Yes
Customer Representative	Enter the Customer representative name	CASEY LAUER
HSE	Was our HSE performance satisfactory? Circle Y or N	Yes
Equipment	Were you satisfied with our Equipment? Circle Y or N	Yes
Personnel	Were you satisfied with our people? Circle Y or N	Yes
Customer Comment	Customer's Comment	

CUSTOMER SIGNATURE

Sales Order #: 9305773	Line Item: 10	Survey Conducted Date: 2/24/2012
Customer: BILL BARRETT CORPORATION E-BILL		Job Type (BOM): CMT SURFACE CASING BOM
Customer Representative: CASEY LAUER		API / UWI: (leave blank if unknown) 05-045-21253
Well Name: GGU		Well Number: 11C-31-691
Well Type: Development Well	Well Country: United States of America	
H2S Present: No	Well State: Colorado	Well County: Garfield

KEY PERFORMANCE INDICATORS

General	
Survey Conducted Date The date the survey was conducted	2/24/2012

Cementing KPI Survey	
Type of Job Select the type of job. (Cementing or Non-Cementing)	0
Select the Maximum Deviation range for this Job What is the highest deviation for the job you just completed? This may not be the maximum well deviation.	Vertical
Total Operating Time (hours) Total Operating Hours Including Rig-up, Pumping, Rig-down. Enter in decimal format.	2
HSE Incident, Accident, Injury HSE Incident, Accident, Injury. This should be recordable incidents only.	No
Was the job purpose achieved? Was the job delivered correctly as per customer agreed design?	Yes
Operating Hours (Pumping Hours) Total number of hours pumping fluid on this job. Enter in decimal format.	2
Customer Non-Productive Rig Time (hrs) Lost time due to Halliburton in the start, execution, or completion of an ordered service or product, or delays in a follow-on service. Enter in decimal format. 0 if none.	0
Type of Rig Classification Job Was Performed Type Of Rig (classification) Job Was Performed On	Drilling Rig (Portable)
Number Of JSAs Performed Number Of Jsas Performed	4
Number of Unplanned Shutdowns Unplanned shutdown is when injection stops for any period of time.	0
Was this a Primary Cement Job (Yes / No)	Yes

Sales Order #: 9305773	Line Item: 10	Survey Conducted Date: 2/24/2012
Customer: BILL BARRETT CORPORATION E-BILL		Job Type (BOM): CMT SURFACE CASING BOM
Customer Representative: CASEY LAUER		API / UWI: (leave blank if unknown) 05-045-21253
Well Name: GGU		Well Number: 11C-31-691
Well Type: Development Well	Well Country: United States of America	
H2S Present: No	Well State: Colorado	Well County: Garfield

Primary Cement Job= Casing job, Liner job, or Tie-back job.	
Did We Run Wiper Plugs? Did We Run Top And Bottom Casing Wiper Plugs?	Top
Mixing Density of Job Stayed in Designed Density Range (0-100%) Density Range defined as +/- .20 ppg. Calculation: Total BBLs cement mixed at designed density divided by total BBLs of cement multiplied by 100	96
Was Automated Density Control Used? Was Automated Density Control (ADC) Used ?	Yes
Pump Rate (percent) of Job Stayed At Designed Pump Rate Pump Rate range defined as +/- 1bbl/min. Calculation: Total BBLs of fluid pumped at the designed rate divided by Total BBLs of fluid pumped, multiplied by 100	97
Nbr of Remedial Sqz Jobs Rqd - Competition Number Of Remedial Squeeze Jobs Required After Primary Job Performed By Competition	0
Nbr of Remedial Plug Jobs Rqd - HES Number Of Remedial Plug Jobs Needed After Primary Plug Pumped By HES	0
Nbr of Remedial Sqz Jobs Rqd - HES Number Of Remedial Squeeze Jobs Required After Primary Job Performed By HES	0